

Reply to Editor comments and changes made

We are very grateful to the editor for the helpful comments on our manuscript. We have improved the manuscript including the changes that the editor has recommended. We have maintained the changes introduced at the previous version of the manuscript because some of the comments have been improved (changes highlighted in green in the manuscript). On the other hand, changes related to language have been highlighted in yellow. The changes made are explained in detail below:

1) Abstract - Language editing by a native speaker is needed. Moreover the abstract miss a red line and have to be restructured.

The whole text has been revised by a native speaker. Changes related to the language have been highlighted in yellow. Thank you very much for your suggestion. We hope that the changes made have improved the understanding of the manuscript.

2) This sentence could be interpreted that risk only depends on different hazard types and this contradicts with your approach and the concept of risk. Please revise this sentence.

The sentence has been modified in order to avoid confusion (page 1, line 10).

Among the natural hazards, flash flooding is the leading cause of weather-related deaths.

3) This relation is not clear.

After the changes made in the previous sentence, we think that the relation is expressed in a clearer way (page 1, lines 10-11).

4) Please formulate your sentence more precise and not as a fact. Everything depends on the applied definition.

We have modified the sentence (page 1, lines 11-13). Thank you for the suggestion.

In this regard, integrated social vulnerability (ISV) can incorporate the spatial distribution, contribution [...]

5) Wording: characterized characteristics.

We have modified the phrase (page 1, lines 13-15). Thank you for the recommendation.

ISV is defined by the demographic and socioeconomic characteristics that condition [...]

6) I recommend to reduce the number of citations.

We have reduced the number of citations as the editor has recommended (page 1, lines 27-28).

7) This is not a good way to bring up a definition which is very important for the study. Make one sentence of this part.

We have moved the definition of the vulnerability assessment (page 2, lines 18-20).

Vulnerability assessment can be defined as analysis of the characteristics of a person or group and their situation that influence their capacity to anticipate, cope with, resist and recover from the impact of a natural hazard (Birkmann, 2013).

8) Do you mean steep slopes?

We have modified this word (page 4, line 11). Thank you for the correction.

Steep slopes, which limit [...]

9) I do not understand this sentence. In which context are the differences? population density?

There are large differences between rural and urban areas in the region of Castilla y León, despite they are the same administrative unit (i.e., municipalities). These differences are related, among other things, to population density, access to medical services or municipal budget. However, we have rewritten the phrase in order to avoid confusion (page 4, line 15).

The region is divided into 2,248 urban areas.

10) Sources of the maps are missing. Check quality of figures regarding the needed resolution (Figure 1).

We have added the source of the maps as the editor has recommended. Moreover, we have checked quality of all figures reading the guide for authors.

Figure 1 is submitted in .png format, it has a resolution of 300 dpi, as the 'Manuscript preparation guidelines for authors' indicates.

11) Rewrite this sentence.

Done. Thank you very much for the recommendation (page 5, lines 9-11).

It was not possible to perform a PCA to define the ISVI, as is usual in the literature (Fekete, 2010; Frazier et al., 2014; Hummell et al., 2016), since the number of variables initially considered (71) outnumbered the urban areas of interest (39) (Sarstedt and Mooi, 2014).

12) Provided the year of all these datasets.

Done. Thank you very much for the suggestion (page 6, lines 10, and page 7, lines 1 and 2).

It was provided by the Spanish National Geographic Institute (IGN; **layer generated in 2013**) and was used as input data for the Geospatial Hydrologic Modelling extension (HEC-GeoHMS 10.0) (USACE, 2013) from which the longitudinal slopes of the river were calculated. Secondly, we examined urban environments

defined by the Basin Water Authority as Areas with Potential Significant Flood Risk (APSFRs; **layer generated in 2015**) (Caballero et al., 2011) and flood hazard zones with low or exceptional probability (i.e., 500-year flood; **layer generated in 2016**), taking into account the river reaches selected in the previous step.

13) Provide 2 or 3 examples of references.

Done. Thank you very much for the suggestion (page 7, line 11).

Based on existing literature (Cutter et al., 2003; Frazier et al., 2014; Hummell et al., 2016), a set of 71 variables was initially characterized for each of the 39 urban areas identified above.

14) Which type of questionnaires did you use (structured interview?).

We did not use a specific type of questionnaire, but we telephoned directly the councils or public organizations and we asked for the data we wanted to know (page 7, lines 14-15).

15) How did you do that, perhaps add this information with a table in the appendix

We have added this information into the 'Data source' column of the Table 1 (Table 1).

16) How did you generate information on collective vulnerability? How do you define collective vulnerability?

The term 'collective vulnerability' encompasses the vulnerability aspects that are related to the community as a potentially sensitive unit (Adger, 1999). Variables contained in 'collective vulnerability' category were 'Potential intersections between evacuation routes and rivers' and 'Areas suited to population evacuation', and they were obtained through GIS analysis (see Table 1). We have added the definition of 'collective vulnerability' (page 7, lines 17-18).

17) Please define this more precise (Table 1).

We have detailed in 'Data source' column of Table 1 how we got all the variables. We hope this information is expressed clearer now in the manuscript. Thank you for the recommendation.

18) Please explain in the text the possible effects of combining data of different years, e.g. amount of buildings and information to households.

It is very difficult not to include data from different years, since each public agency has its own mechanisms for updating data. This was partly corrected by using relative values of variables instead of absolute values. We have included data from the year 2009 to 2015, so that we consider that the social structure has not changed in this very short period of time. We have added this explanation in the discussion section (page 19, line 13 and page 20, lines 1-2)

It is also worth mentioning that it is very difficult not to include data from different years in this type of analysis related to flash floods, since different databases are usually consulted and each public agency has its own mechanisms for updating data.

19) Rephrase this sentence

We have rephrased the sentence. Thank you for the suggestion (page 9, lines 12-14).

The number of groups was determined by taking into account both the distance at which groups were differentiated into the graphical output of the HSA (i.e., the dendrogram) and the consistency and homogeneity of the numbers of variables contained in them.

20) What is a collective building?

We have named 'collective buildings' to all those large facilities, such as schools, hospitals, retirement homes, etc. We have changed the term used in the text in order to avoid confusion (page 11, line 7).

The first group contained variables mainly related to large facilities.

21) Indicate these in the figure.

The fifth group showed bilateral correlations (i.e., pairs of variables), therefore all variables displayed significant correlations with at least one variable. We have decided not to modify Figure 3 because we should have had to highlight all variables of this group, which did not add valuable information (Figure 3). We have modified the text in order to avoid confusion (page 11, line 11).

22) Increase and check quality of figure. Provide sources of maps (Figure 4).

We have added the sources of the map. Moreover, we have checked the quality of the figure. All maps that compose Figure 4 are submitted in .png format and they have a resolution of 300 dpi. Moreover, Figure 4 has been improved increasing the font size of map legends.

23) Whole discussion section has to be more related to your results and compared to other studies. You can discuss here more in depth the difference of the regions or what are the changes to a traditional FRM in these different urban areas. Be more specific.

The followed strategy for writing discussion section of the manuscript was to match the obtained results with the socio-economic and demographic characteristics of the study area. We selected this strategy because there is no scientific consensus regarding the methodology needed for constructing social vulnerability indexes, so there are almost as many types of indexes as published works. This makes the comparison between different social vulnerability indexes difficult. Thus, the discussion of the paper not only explains the results of this study, but also tries to match the obtained results with specific flood risk mitigation measures that could be implemented by competent public agencies according to the characteristics of the study area.

24) Please provide more insights of your study in this context (limitation, challenges, uncertainty ...) and compare this with other studies and approaches. This sub-section is very similar to other parts where you highlighted the gaps (section 4.1).

We have tried to explain the main limitations and challenges faced in the constructions of our ISVI compared to social vulnerability indexes designed in the natural disaster field. Limitation and challenges explained in the text are listed below:

Limitation 1. Information available in mountainous urban areas is usually limited (page 19, lines 7-12). Flash floods usually affect small mountainous urban areas where the information available is limited, either because it is not available in public databases or because it is not generated on this work scale. This type of urban areas are usually managed by small councils, which do not usually have sufficient resources to generate the required information. This imposes limits on any assessment related to flash floods. However, this constraint does not usually apply to studies on fluvial floods since, in terms of population, these frequently affect significant urban areas, which generally means greater availability of data and a larger number of event records.

Limitation 2. The lack of information can condition the selected work scale (page 20, lines 1-5). The lack of information may condition the selected work scale (i.e., it is not possible to work at a certain work scale if there is no information about the main variables needed for constructing the ISVI), which could result in homogeneous vulnerability reduction measures being put in place in areas where the spatial variability of vulnerability is high. This would reduce their effectiveness and might not guarantee a uniform reduction in vulnerability. In this study, the selected work scale was the urban area, as this entity tends to be small and homogeneous in the region of Castilla y León, especially if we are talking about mountainous urban areas.

Limitation 3 and challenge 1. Sensitivity and resilience are considered as static components (page 20, lines 6-10). The results give a snapshot of vulnerability, however sensitivity and resilience can vary over time and space. The identification of spatial patterns in this work represents a step forward towards improving FRM on a regional scale. Regarding temporal variability, we suggest periodic monitoring of identified variables as an explanation of social vulnerability to flash floods. Periodic recalculations would allow urban areas to keep informed about the behaviour of SVI values over time (here we are talking about a challenge).

Limitation 4. ISVI values are not absolute (page 20, lines 12-14). ISVI can be used qualitatively to determine whether one urban area is more vulnerable than the others and, if so, to what extent. Methodology of this work can be extrapolated to other urban areas prone to flash flooding, but it is very difficult to extrapolate the results because they characterize the vulnerability of a certain study area under certain socio-demography and socio-economy characteristics.

Limitation 5. The PCA sample size limitation (page 20, lines 15-20). Conducting a preliminary HSA helps overcome the limitations of the PCA sample size. Most published works either do not discuss this aspect or tackle it by adding the variables directly. However, the HSA enables the vulnerability variables to be divided into groups, which already allows the implementation of a PCA in each group for constructing the ISVI. Nevertheless, HSA did not provide information on the relative significance of variables within each group, making it necessary to subsequently perform a PCA.

Limitation 6 and challenge 2. Different views regarding the weighting method and the spatial variability of the vulnerability factors (page 18, lines 20-25). It seems reasonable to suppose that not all factors have the same importance in the construction of the ISVI, especially when there may be variations in the number of variables forming each factor and their explained variance. It is even possible that there is a

spatial variation in each factor's importance. This can be solved by carrying out geographically weighted principal component analysis (GWPCA), which would need more detailed information.

25) Rephrase - is very unclear

We have rephrased this part (page 19, lines 11-13). Thank you for the recommendation.

However, this constraint does not usually apply to studies on fluvial floods since, in terms of population, these frequently affect significant urban areas, which generally means greater availability of data and a larger number of event records.

26) But this is then also a snapshot

They were effectively snapshots, but it is possible to perform temporal analysis with a set of snapshots and to obtain more reliable results. This also happens with other variables, such as river flows. It is possible to have one single data of river flow or a dataset of river flows, which enable to conduct more comprehensive analysis (page 20, lines 11-13).

27) Rephrase

Done (page 20, line 15). Thank you for the recommendation.

As regards calculation of the ISVI, it is crucial that ISVI values should not be considered as absolute.

28) Rephrase

Done (page 20, lines 17-18). Thank you for the suggestion.

In the methodology proposed here, conducting a preliminary HSA helps overcome the limitations of the PCA sample size.

29) This is unclear. Do you mean that flooding have an higher impact on these type of buildings?

Given the vulnerability factors obtained, we can know that exposure component is partly characterized by dwellings with basement (see 'exposure in the urban built-up environment' factor of Table 2) and households with 1 storey above ground level (see 'constructive exposure' factor of Table 2). Flooding have a higher impact on these type of buildings in comparison with households with two or more storeys above ground level in two ways: i) people that live in this type of dwellings have not an upper floor where they can shelter during the flood; and ii) content damages can be higher in this type of buildings since most of household items can be reached by the flood (page 21, line 8).

30) How this is related to your results? Can you proof the interpretation of other studies in your study? Same questions for the paragraph above (section 4.2).

We explain the obtained results in this section, so it is fully related to our results. We have added the name of the vulnerability factors in the different paragraphs in order to facilitate the understanding of the section and to link results (Table 2 and Figure 4) with discussion clearer.

Furthermore, bibliographic references included in this section not only support the expressed ideas, but also in a way compare the variables obtained in other studies with the ones we have obtained in our work.

31) That is on very general level. Be more specific related to your study. Are the result used now by decision makers? (section 4.3)

There is a general introduction in this section talking about possible policy implications of this work. However, we already added examples of possible flood risk mitigation measures of each cluster of urban areas identified by Latent Class Cluster Analysis (LCCA) in order to be more specific and show clearer the practical implications of our results. Examples that were already introduced are highlighted below:

Cluster 1. [...] mitigation measures for those urban areas included in cluster 1 should be targeted towards improving physical resilience (e.g. raising the first-floor elevation above ground level) and giving the population financial help to put mitigation measures in place (e.g. providing financial aid for dwellings located in flood-prone areas).

Cluster 2. [...] people living in the urban areas included in cluster 2 are highly dependent on external assistance due to the high rates of ageing population. Therefore, different evacuation routes should be designed and clearly defined by the emergency services, and shelters constructed near these urban areas.

Cluster 3. [...] mitigation measures for urban areas included in cluster 3 should be aimed at collective facilities (e.g. carrying out flood emergency drills) and should encourage the implementation of individual mitigation strategies (e.g. through a financial incentive system, such as repayment of part of the money spent on municipal taxes).

32) Rephrase whole sentence - relation does not match. How can population sensitivity be damaged by a flash flood?

Sensitivity is the term used in bibliography to refer to the level to which people and assets can be damaged by a flash flood. The main objective of the ISVI was to identify those socio-economic and demographic characteristics that influence the population capacity to anticipate, cope with, resist and recover from the impact of a natural hazard. Therefore, the ISVI enables to know which characteristics make that a certain population is more damaged than other for the same flash flood event (page 22, lines 21-23).

33) Can you proof this for your study?

Castilla y León is a very large region with a low population density. In addition, mountainous urban areas prone to flash flooding usually are very small areas with few structures and facilities, and limited economic activities. Therefore, resources in this type of areas are limited, especially economic resources, as well as the access to specific public services (page 23, lines 9-10).

34) Rephrase whole sections. Overall, please try to formulate shorter and more clear sentences.

We have rewritten the whole section (page 23, lines 21-29). Thank you for the recommendation.

A comprehensive characterization of social vulnerability is critical for an integrated FRM. The implementation of an HSA helps to overcome PCA sample size limitation. This means using an alternative methodology to the one usually used to construct an ISVI in areas where available data is limited. The results show the high spatial heterogeneity of social vulnerability within the study region and the high variability in ISVI scores regarding interactions between vulnerability components, which give integrated analysis greater importance. The identification of vulnerability patterns through LCCA gives the sources of vulnerability in each urban area. This simplifies the spatial heterogeneity analysis of social vulnerability and indicates which aspects need to be improved to decrease sensitivity and exposure and which aspects need to be reinforced to increase resilience. This allows the ISVI results to be more effectively integrated into FRM plans and policies, which in turn enables specific strategies of vulnerability reduction to be proposed, thereby increasing their efficiency.

CITED BIBLIOGRAPHY

Adger, W. N.: Social vulnerability to climate change and extremes in coastal Vietnam, *World Development*, 27, 249-269, 1999.

Construction of an Integrated Social Vulnerability Index in urban areas prone to flash flooding

Estefania Aroca-Jimenez¹, Jose Maria Bodoque¹, Juan Antonio Garcia², Andres Diez-Herrero³

¹Department of Mining and Geological Engineering, University of Castilla-La Mancha, Avd. Carlos III, Toledo 45071, Spain

²Department of Business Administration, University of Castilla-La Mancha, Avd. Real Fabrica de Sedas, Talavera de la Reina 45600, Spain

³Geological Hazards Division, Geological Survey of Spain, 23 Calle Rio Rosas, Madrid 28003, Spain

Correspondence to: Estefania Aroca-Jimenez (estefaniacarmen.aroca@alu.uclm.es)

Abstract. Among the natural hazards, flash flooding is the leading cause of weather-related deaths. Flood risk management (FRM) in this context requires a comprehensive assessment of the social risk component. In this regard, integrated social vulnerability (ISV) can incorporate spatial distribution and contribution and the combined effect of exposure, sensitivity and resilience to total vulnerability, although these components are often disregarded. ISV is defined by the demographic and socioeconomic characteristics that condition a population's capacity to cope with, resist and recover from risk, and can be expressed as the Integrated Social Vulnerability Index (ISVI). This study describes a methodological approach towards constructing the ISVI in urban areas prone to flash flooding in Castilla y León (northern central Spain, 94,223 km², 2,478,376 inhabitants). A hierarchical segmentation analysis (HSA) was performed prior to the principal components analysis (PCA), which helped to overcome the sample size limitation inherent in PCA. ISVI was obtained from weighting vulnerability factors based on the tolerance statistic. In addition, latent class cluster analysis (LCCA) was carried out to identify spatial patterns of vulnerability within the study area. Our results show that the ISVI has high spatial variability. Moreover, the source of vulnerability in each urban area cluster can be identified from LCCA. These findings make it possible to design tailor-made strategies for FRM, thereby increasing the efficiency of plans and policies and helping to reduce the cost of mitigation measures.

1 Introduction

Flash floods are highly spatio-temporally localized flood events that usually occur in small steep basins. They are caused by a sudden increase in the stream flow, generally due to spatially concentrated heavy rainfall, and characteristically reach a high peak flow in a short period of time (i.e., usually within a few hours of the onset of rainfall) (Borga, 2013; Wilhelmi and Morss, 2013; Bodoque et al., 2015; Terti et al., 2015). Because of their short duration, which limits or even eliminates warning time, flash floods are considered to be a destructive hazard with one of the greatest capacities for generating risk, in terms of both the socioeconomic impact and the number of casualties on a global scale (Marchi et al., 2010; Borga, 2013;

Terti et al., 2015). According to Barredo (2007), 40% of flood-related casualties in Europe between 1950 and 2006 were caused by flash floods.

5 The growth of exposed population, the allocation of economic activities to flood-prone areas and the rise in extraordinary event frequency over the last few decades (Huntington, 2006; Frigerio et al., 2016) have led to an increase in flash flood-related casualties and economic losses (Llasat et al., 2008; Marchi et al., 2010). This highlights the need to make people aware of risk and prepare them for living with it (Birkmann, 2013). In this regard, the United Nations has put a great deal of effort into promoting awareness of the importance of disaster reduction. This initiative started in 1990 with the International Decade for Natural Disaster Reduction (IDNDR). The experience gained during this decade laid the foundations for the International Strategy for Disaster Reduction. This gave rise to different frameworks, of which the Sendai Framework for Disaster Risk Reduction 2015-2030 is the most topical (UNISDR, 2015). This new approach has enabled the FRM to change from an engineering-based perspective, which has proved to have an ineffective response (Birkmann, 2013; Cutter et al., 2013; Koks et al., 2015), to a disaster-resilient perspective, highlighting the need to build resilient communities through the integration of vulnerability reduction approaches into risk reduction policies (Cutter et al., 2008; Birkmann et al., 2013; UNISDR, 2015).

Much effort was put into flood hazard analysis in the past but vulnerability assessment is still one of the biggest constraints in flood risk assessment to date (Mechler et al., 2014; Koks et al., 2015). Vulnerability assessment can be defined as analysis of the characteristics of a person or group and their situation that influence their capacity to anticipate, cope with, resist and recover from the impact of a natural hazard (Birkmann, 2013). A hybrid approach is currently the one most frequently used for analyzing vulnerability. This comprises risk-hazard approaches, which consider that vulnerability depends on biophysical risk factors and the potential loss of a particular exposed population (e.g. the Hazards-of-place model of vulnerability) (Cutter, 1996), and political economic/ecological approaches, which emphasize the political, cultural and socioeconomic factors explaining differential exposure, impacts and capacities to recover from an event (e.g. the Pressure and Release model) (Blaikie et al., 1994). Taking into account the key parameters for vulnerability research, outlined in the approaches mentioned above, vulnerability depends on the exposure and sensitivity to stress of the social system (i.e., any characteristics that increase vulnerability), as well as its capacity to absorb or cope with the effects of these stressors (i.e., resilience) (Adger, 2006; Eakin and Luers, 2006; Birkmann, 2013; Thielen et al., 2014). Numerous papers have analyzed the physical vulnerability component (Koks et al., 2014; Ocio et al., 2016). However, the social aspects of vulnerability have often been neglected (Cutter et al., 2003; Hummell et al., 2016), mainly due to the difficulty of quantifying variables that are inherently qualitative (Frazier et al., 2014). Social vulnerability tries to explain how a certain natural hazard produces an unequal impact on exposed populations (Cutter et al., 2003; Nelson et al., 2015). It can be characterized by any socioeconomic and demographic variables that influence a society's preparedness, response and recovery (Birkmann, 2013; Cutter et al., 2013; Terti et al., 2015). Social vulnerability has been assessed in different contexts (e.g., those of global environmental change

and natural hazards). However, not many studies have focused exclusively on the context of flood risk (Tapsell et al., 2002; Burton and Cutter, 2008; Fekete, 2010; Mollah, 2016), and only a very few of these relate to flash floods (Balteanu et al., 2015; Karagiorgos et al., 2016). Overall, in social vulnerability analysis a separate assessment is made of vulnerability (Tapsell et al., 2002; Cutter et al., 2003; Nelson et al., 2015) and resilience (Cutter et al., 2008; Cutter et al., 2010; Siebeneck et al., 2015). The approach has usually been based on calculating composite indices from socio-demographic and economic characteristics. Reductionist statistical techniques i.e., factor analysis (FA) and principal components analysis (PCA) have generally been used for this purpose (Clark et al., 1998; Cutter et al., 2003; Dwyer et al., 2004; Fuessel, 2007; Grosso et al., 2015; Hummell et al., 2016; Rogelis et al., 2016).

10 Less attention has been paid to the integrated analysis of vulnerability components (i.e., using the hybrid approach mentioned above). This considers the differential influence of exposure (people and assets susceptible to harm), sensitivity (the extent to which people and assets can be damaged) and resilience (the ability to absorb, cope with and recover from the effects of a disaster) on total vulnerability (Frazier et al., 2014; Pandey and Bardsley, 2015; Weber et al., 2015). The above helps to identify which characteristics contribute to increases or decreases in vulnerability and where they are spatially
15 represented. Accordingly, this approach provides a much more holistic assessment of vulnerability, since it models the combined effects of its components (Fuessel, 2007; Frazier et al., 2014). Although exposure and vulnerability are assumed to be two different concepts in the traditional risk framework, the inclusion of exposure as a component for consideration is currently common practice when assessing social vulnerability as it provides a more holistic characterization (Turner et al., 2003; Adger et al., 2004). If exposure is absent it is not possible to talk about potential for loss, in other words, vulnerability (Frazier et al., 2014). Moreover, it is worth mentioning that flash floods occur in mountainous areas where data availability may be limited. Very few studies take this constraint into account. In some cases, it is addressed by aggregating the variables under consideration in order to obtain the vulnerability index (Balteanu et al., 2015). Determination of the vulnerability index requires vulnerability factor weighting. To this end, equal weights have usually been assigned to all factors (Cutter et al., 2003; Cutter et al., 2010), which may not give a realistic result (Frazier et al., 2014). Differential weights according to
25 expert judgments have sometimes been assumed (Zelenakova et al., 2015). This could in itself be a limitation as experts' judgments on the same issue may differ (Asadzadeh et al., 2015). It is also worth mentioning that statistical methods, such as correlation-based PCA (Mollah, 2016), are increasingly being used (Asadzadeh et al., 2015).

This paper aims to calculate an integrated social vulnerability index (ISVI) for flash floods that considers the vulnerability components (i.e., exposure, sensitivity and resilience) separately, analyzing how each of them is involved in the total vulnerability. To address this, a set of variables were statistically analyzed, firstly by means of a hierarchical segmentation analysis (HSA) and secondly by performing a PCA. This approach constitutes an alternative methodology to what is typically used in social vulnerability assessment, making it possible to overcome the insufficient availability of data that

frequently occurs in mountainous areas. Tolerance statistics were used as a variable weighting method. Latent class cluster analysis (LCCA) was also carried out in order to identify social vulnerability profiles within the study region.

2 Materials and Methods

2.1 Study area

5 The methodology proposed here was applied in the region of Castilla y León, which occupies almost all of central northern Spain (Iberian Peninsula; Fig. 1). Castilla y León is not only the largest region in Spain but also in the European Union, its surface area of 94,230 km² exceeding that of seventeen of the twenty-eight member states, including Portugal, Austria and Belgium. Its relief is mainly composed of a large plateau between 700 and 1,100 m above sea level, surrounded by large mountain systems with peaks up to 2,600 m high. The climate is a continental variation of the Mediterranean type, with hot dry summers and cold relatively dry winters. Average annual rainfall ranges from 300 to 600 mm and falls primarily in spring and autumn, although in certain mountainous areas more than 1,800 mm is not unusual. Steep slopes, which limit the development of vegetation, and spatially concentrated heavy rainfall in certain mountainous areas favor the triggering of flash floods. With regard to demographics, Castilla y León has a population of nearly 2.5 million, 5.5 % of whom are foreign born. Population densities range from 9 to 65 inhabitants per km², giving a mean population density for the region of 26, far lower than the mean for Spain of 92. The region is divided into 2,248 urban areas. Of the total number of urban areas, 94% have fewer than 2,000 inhabitants but account for 26 % of the region's population. It is also worth mentioning that the region has an ageing population, with an ageing index close to 2 (i.e., there are two people aged 65 or over for each person below the age of 15). In urban areas with less than 2,000 inhabitants, however, the ageing index is higher than 5.

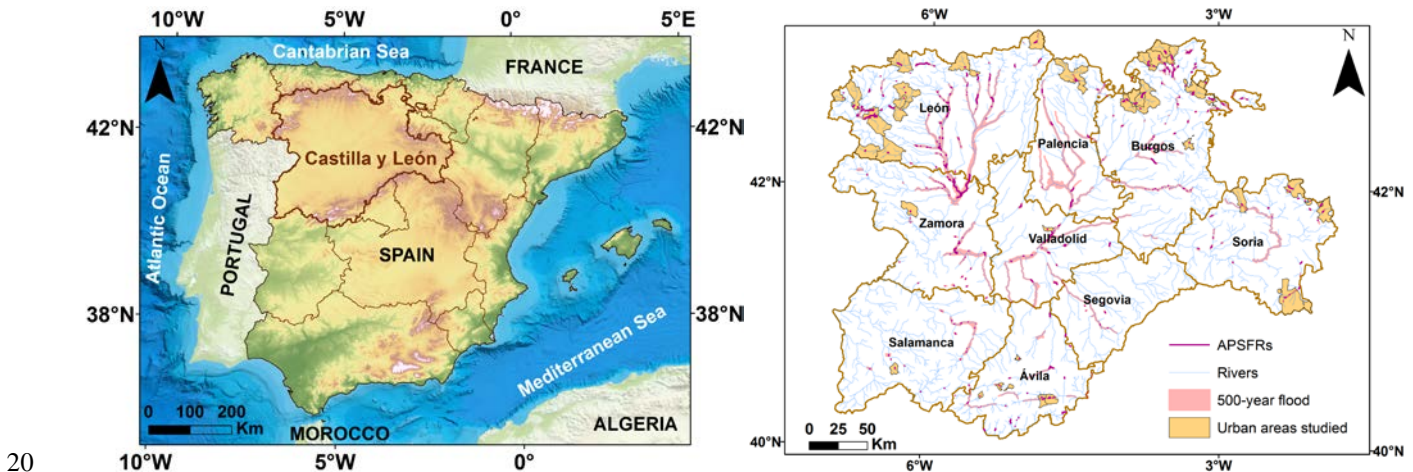


Figure 1: Location of the region of Castilla y León. Sources: IGN raster cartography (available WMS Server: <http://www.ign.es/wms-inspire/mapa-raster?request=GetCapabilities&service=WMS&>; accessed on 4 December 2016); Digital Terrain Model 200m (available on-line: <http://www.ign.es>; accessed on 3 December 2016); regional boundaries (available on-line:

<http://www.ign.es>; accessed on 7 December 2016); municipal boundaries (available on-line: <http://www.ign.es>; accessed on 5 December 2016); rivers (available on-line: <http://www.mapama.gob.es>; accessed on 5 December 2016); APSFRs (available on-line: <http://www.mapama.gob.es>; accessed on 5 December 2016); 500-year flood areas (available on-line: <http://www.mapama.gob.es>; accessed on 5 December 2016).

5

2.2 Methodological outline

The first step was to distinguish those urban areas of the study region that were prone to flash flooding (see Sect. 2.2.1). Next, a database of socio-demographic and socio-economic variables was constructed for each of the urban areas studied (see Sect. 2.2.2). It was not possible to perform a PCA to define the ISVI, as is usual in the literature (Fekete, 2010; Frazier et al., 2014; Hummell et al., 2016), since the number of variables initially considered (71) outnumbered the urban areas of interest (39) (Sarstedt and Mooi, 2014). However, the database had previously been divided into small subsets of variables (see Sect. 2.2.3) by means of an HSA. This allowed a PCA to be performed on each one, which in turn enabled extraction of the different vulnerability factors (see Sect. 2.2.4) which go to make up the ISVI (see Sect. 2.2.5). Vulnerability factors were also used to identify social vulnerability patterns within the study area by means of LCCA (see Sect. 2.2.6) (Fig. 2).

10

15

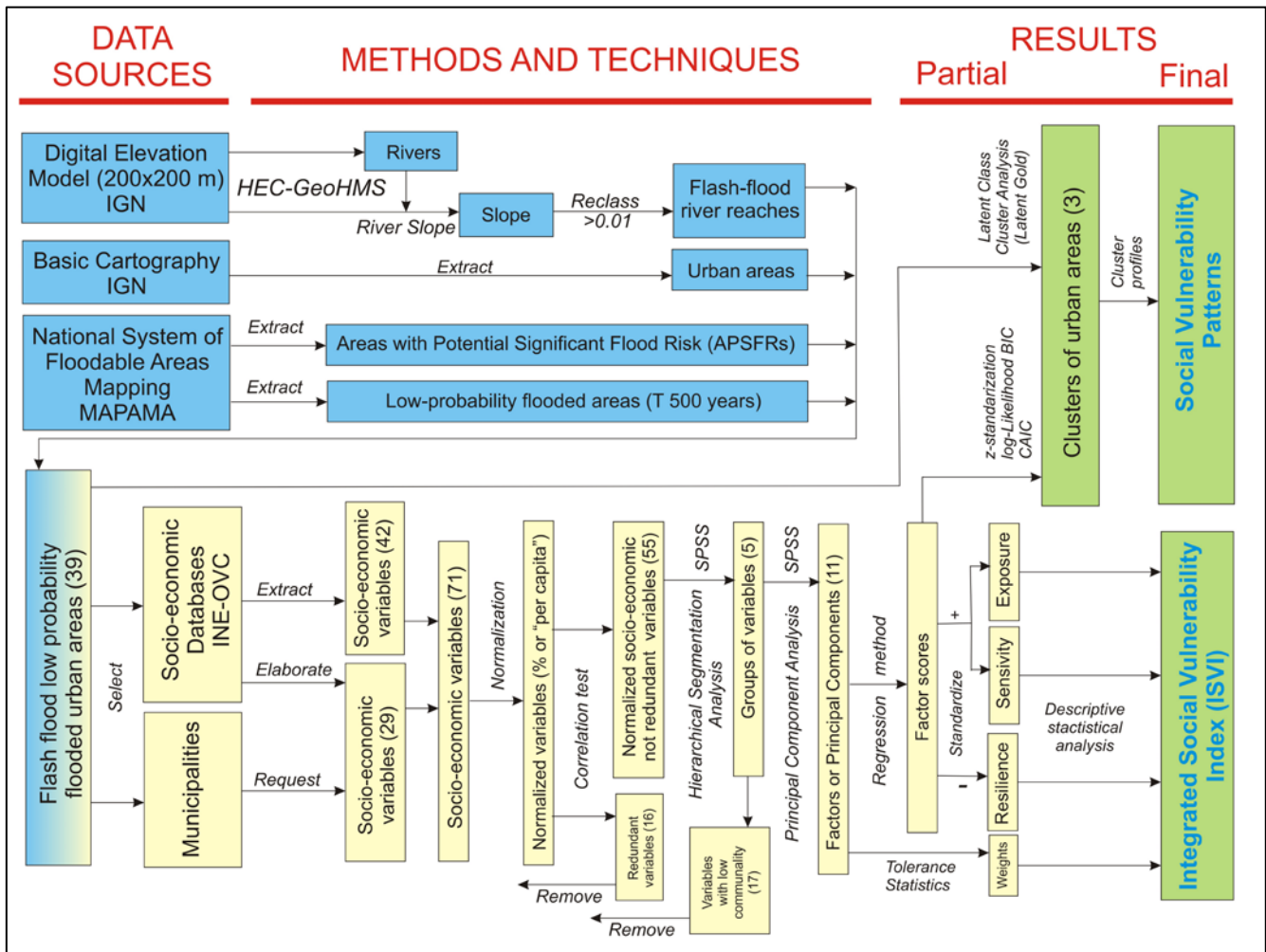


Figure 2: Methodological outline containing the different steps followed in the construction of the ISVI and the social vulnerability patterns.

5 2.2.1 Identification of urban areas prone to flash flooding

Flash floods occur in very specific areas. It was therefore necessary to specify the urban areas prone to this type of event. This was done by considering a number of simple but robust requirements. The first of these was to identify those river reaches where the longitudinal slope across a given urban area was higher than 0.01 m m^{-1} (Bodoque et al., 2015). A digital terrain model with a cell size of 200 m was used to apply this criterion. It was provided by the Spanish National Geographic Institute (IGN; layer generated in 2013) and was used as input data for the Geospatial Hydrologic Modelling extension (HEC-GeoHMS 10.0) (USACE, 2013) from which the longitudinal slopes of the river were calculated. Secondly, we examined urban environments defined by the Basin Water Authority as Areas with Potential Significant Flood Risk

(APSFRRs; layer generated in 2015) (Caballero et al., 2011) and flood hazard zones with low or exceptional probability (i.e., 500-year flood; layer generated in 2016), taking into account the river reaches selected in the previous step. These were provided by the Spanish Ministry of Agriculture and Fisheries, Food and Environment (MAPAMA). The low probability scenario was chosen because it is the most comprehensive representation of urban areas that could be affected by flash floods on a regional scale. The 500-year flood zones were obtained from preliminary flood risk assessments by competent water, coastal and civil protection authorities, as stated in Directive 2007/60/CE on flood risk assessment and management. The aforementioned flooded areas were then contrasted with the river reaches selected according to the first criterion in order to identify the urban areas of interest, which resulted in a total of 39.

2.2.2 Database generation

Based on existing literature (Cutter et al., 2003; Frazier et al., 2014; Hummell et al., 2016), a set of 71 variables was initially characterized for each of the 39 urban areas identified above. A total of 42 socio-demographic and socio-economic variables were extracted from state, regional or local databases (e.g., population, education, buildings). However, another 29 variables were requested from certain public organizations and councils. This information was obtained from phone calls, from direct personal contact with a person in charge (e.g., dependency, development and infrastructures) or through personal research in which the variables were estimated from other non-specific sources of information (e.g., collective vulnerability, healthcare services). Collective vulnerability encompasses vulnerability aspects that are related to the community as a potentially sensitivity unit. Variables were then normalized to a percentage or per capita (Hummell et al., 2016). Redundant variables were removed after conducting a correlation test (Cutter et al., 2003). Specifically, those variables with a correlation coefficient above 0.9 were not considered. As a result, 16 variables were eliminated from the database and the methodological approach was continued with the other 55 variables (Table 1). These variables were classified into 8 thematic information blocks: *i*) population (11 variables related to demography); *ii*) dependency (4 variables linked to elderly people); *iii*) education (2 variables associated with the level of educational attainment); *iv*) employment situation (5 variables related to unemployment status); *v*) healthcare services (8 variables linked to medical system characteristics); *vi*) development and infrastructures (10 variables associated with the economic potential of the region and its facilities); *vii*) buildings (13 variables related to construction features) and *viii*) collective vulnerability (2 variables linked to the availability of infrastructures for evacuating population).

Table 1: Set of variables used in the exploratory analysis of social vulnerability dimensions.

Category	Variable	Description	Data source
Population	TPOP	Total population	Spanish Statistics Institute (2014)
	FOREIG	Foreigners	Spanish Statistics Institute (2014)
	POP0	Inhabitants aged 0-4	Spanish Statistics Institute (2014)
	POP5	Inhabitants aged 5-14	Spanish Statistics Institute (2014)
	POP15	Inhabitants aged 15-64	Spanish Statistics Institute (2014)
	POP65	Inhabitants aged 65 or older	Spanish Statistics Institute (2014)
	PROJ_0	Population projection aged 0-4 for 2025	Spanish Statistics Institute (2014)
	PROJ_5	Population projection aged 5-14 for 2025	Spanish Statistics Institute (2014)
	PROJ_15	Population projection aged 15-64 for 2025	Spanish Statistics Institute (2014)
	PROJ_65	Population projection aged 65 or older for 2025	Spanish Statistics Institute (2014)
NRESID	New residents	Spanish Statistics Institute (2014)	
Dependency	DISABLED	Disabled people	Institute of Social Services and the Elderly (2013)
	DEPRAT_M	Dependency rates: males	Spanish Statistics Institute (2014)
	DEPRAT_F	Dependency rates: females	Spanish Statistics Institute (2014)
HOUSE_OLD	Households where people aged 65 or older live	Population and Housing Census (2011)	
Education	ILLITER	Illiterate people	Population and Housing Census (2011)
	LITER	Literate people	Population and Housing Census (2011)
Employment situation	LT_UNEMP	Long-term unemployed people	Regional Employment Observatory (2015)
	UN_RAT	Unemployment rates	Spanish Public Employment Service (2014)
	HS_OEMP	Households where any employed people live	Population and Housing Census (2011)
	HS_UNEMP	Households where any unemployed people live	Population and Housing Census (2011)
	WORK_M	People that work within urban area of residence	Population and Housing Census (2011)
Healthcare services	HEALTH_C	Health centers	Spanish Ministry of Health, Social Services and Equality (2015)
	DIST_HC	Distance to the nearest health centre	Google Maps consultation (2015)
	TIME_HC	Travel time to the nearest health centre	Google Maps consultation (2015)
	TYPE_H	Type of healthcare (continuity)	Telephone calls (2015)
	H_BEDS	Hospital beds	Regional Statistics Information System (2014)
	DIST_H	Distance to the nearest hospital	Google Maps consultation (2015)
	TIME_H	Travel time to the nearest hospital	Google Maps consultation (2015)
MED_ST	Medical staff	Telephone calls (2015)	
Development and infrastructures	KINDERG	Kindergartens	Spanish Ministry of Education, Culture and Sport (2015)
	ELEM_SCH	Elementary schools	Spanish Ministry of Education, Culture and Sport (2015)
	SEC_SCH	Secondary schools	Spanish Ministry of Education, Culture and Sport (2015)
	RET_HOME	Retirement homes	Spanish Ministry of Health, Social Services and Equality (2009)
	TOUR_AC	Tourist accommodation	Regional Statistics Information System (2014)
	CAMPSITES	Campsites	Internet search (2015)
	DEBTS	Municipal debt per inhabitant	Spanish Ministry of Finance and Public Administrations (2014)
	PC_INC	Per capita income	Spanish Institute for Fiscal Studies (2011)
FIX_INV	Fixed investments per inhabitant	Spanish Ministry of Finance and Public Administrations (2014)	
BUDGET	Municipal available budget per capita	Spanish Ministry of Finance and Public Administrations (2014)	
Buildings	BUILTAREA	Built-up area per area without buildings	Spanish cadastre (2015)
	ABOVE_GR	Above ground built-up area	Spanish cadastre (2015)
	UNDER_GR	Underground built-up area	Spanish cadastre (2015)
	POP_SETL	Population per settlement area	Spanish cadastre (2015)
	CON_AGE	Mean age of household construction	Spanish cadastre (2015)
	PERM_H	Permanent households	Population and Housing Census (2011)
	VACANT_H	Vacant households	Population and Housing Census (2011)
	NONACCES	Non-accessible households	Population and Housing Census (2011)
	POORCOND	Households in poor condition	Population and Housing Census (2011)
	GDCOND	Households in good condition	Population and Housing Census (2011)
	ST_AGBG	Households with 1 storey above ground level and/or another storey below ground level	Population and Housing Census (2011)
ST_AGL	Households with 2 or more storeys above ground level	Population and Housing Census (2011)	
USE_AR	Households' mean useful area	Population and Housing Census (2011)	
Collective vulnerability	INTERS	Potential intersections between evacuation routes and rivers	GIS analysis (2015)
	EVACUAT	Areas suited to population evacuation	GIS analysis (2015)

2.2.3 Exploring the dimensions of social vulnerability

Variables being considered were grouped together with the HSA application, using SPSS (IBM-SPSS v.19) statistical software. This is a multivariate statistical technique for automatic data classification that divides an initial set of variables into different groups. This division is based on minimizing the distance between variables in the same group and maximizing the distance between variables in different groups (Sarstedt and Mooi, 2014). The greater the distance between variables, the less similar they are. The division of variables into groups followed a hierarchical process in which initially as many groups as variables were considered. Subsequently, successive iterations of hierarchical algorithms enabled variables to converge in larger groups. Once the variables were standardized (Cutter et al., 2003), the squared Euclidean distance was used as a measure of similarity, i.e., the square of the square root of the sum of the differences between variable values. In addition, Ward's method was used as a grouping method. This seeks the least possible variability within each group (i.e., the minimum variance) as an associative hierarchical algorithm, which has been demonstrated to be one of the most effective (Pérez, 2004), especially when the sample size is small (Martín et al., 2015). The number of groups was determined by taking into account both the distance at which groups were differentiated into the graphical output of the HSA (i.e., the dendrogram) and the consistency and homogeneity of the numbers of variables contained in them. Finally, distinguishing variables into groups made it possible to conduct a principal components analysis in each of them.

2.2.4 Identification of vulnerability factors

SPSS (IBM-SPSS v.19) was used to implement the Principal Component Analysis (PCA) in each group differentiated by the HSA. This aimed to reduce the number of variables to latent variables, which are not directly observable, and so-called principal components or factors, which are a linear combination of primitive variables (Sarstedt and Mooi, 2014). The Kaiser-Meyer-Olkin (KMO) statistic and Barlett's test of sphericity were estimated in order to evaluate the suitability of performing PCA in the variables under consideration. For each group, all the variables were initially examined using the factor extraction process. Variables with low communality (values below 0.5) were subsequently removed and the factor extraction process was repeated until all variables had communality values above 0.5. Communality indicates how much variance of each variable can be reproduced by means of factor extraction. In cases where a group presented more than one factor, these were separated and a PCA performed on each one of them individually. The correlations between factors and variables were represented by factor loadings, which enabled each factor to be named. Finally, factor scores were obtained using the regression method, which is the most frequently used (Sarstedt and Mooi, 2014). Factor scores embody a linear combination of the primary variables. Thus, each urban area was composed of as many factor scores as social vulnerability factors identified.

2.2.5 Construction of the Integrated Social Vulnerability Index (ISVI)

Factor scores for each vulnerability factor were saved as new attributes in the data file. This allowed them to be used for index construction. Factor scores were standardized and took positive or negative values depending on whether the characteristic described by a certain factor in a given urban area was above or below average (Sarstedt and Mooi, 2014). In the ISVI, factors that express sensitivity or exposure are traditionally considered as positive values and those that express resilience are negative (Cutter et al., 2013; Frazier et al., 2014; Hummell et al., 2016). In order to maintain this criterion, the sign of some factor scores were reversed (i.e., multiplied by -1).

ISVI for each urban area was calculated according to the following Equation 1 (adapted from Frazier et al. (2014):

$$ISVI = E + S - R , \quad (1)$$

where *ISVI* is the integrated social vulnerability index, *E* is exposure, *S* is sensitivity, and *R* is resilience. Each vulnerability component was estimated using Equation 2 (adapted from Frazier et al. (2014):

$$V_C = \sum_{f=1}^n w_f \cdot S_f , \quad (2)$$

where V_C is the vulnerability component (exposure, sensitivity or resilience), w_f is the weight allocated to the n factor, and S_f are the factor scores of the n factor.

The value of a specific vulnerability component was the sum of the factor scores multiplied by their respective weights. The index construction method used was based on the one developed by Frazier et al. (2014), although the tolerance statistic was used here as a weighting method instead of the amount of explained variance. Tolerance is a statistical test to detect multicollinearity (Sarstedt and Mooi, 2014). It reaches a maximum value of 1 when one factor has no degree of multicollinearity with the other factors, and a minimum value of 0 when one factor is a perfect linear combination of the others. Thus, vulnerability factors expressing less redundant information would have more weight in the ISVI.

2.2.6 Identification of social vulnerability patterns

LCCA is a model-based clustering approach employed (using Latent Gold® 4.5) for the purpose of identifying social vulnerability patterns within the study area. Urban areas of interest were classified into clusters (Vermunt and Magidson, 2002) and the sources of vulnerability for each cluster were shown by the statistical model. The classification was made by creating a latent categorical variable. This measures the probability of belonging to a certain cluster according to the characteristics of the vulnerability factors. Factor scores were used as indicators for identifying the different clusters. A z-standardization of factor scores was implemented before they were entered into the statistical software. Five models integrating from one (sample homogeneity) to five clusters (sample heterogeneity with 5 patterns) were examined. Information criteria based on the model log likelihood BIC (Bayesian Information Criterion) and CAIC (Akaike's

Information Criterion) were used as model selection tools in order to choose the optimum model, based on the minimum values of these two criteria (Morin et al., 2011).

3 Results

3.1 Integrated Social Vulnerability Index (ISVI)

- 5 The dendrogram shows the five groups of variables that were differentiated by the HSA (Fig. 3). Groups were homogeneous in both the number of variables (each comprising between 10 and 13 variables) and the type of variables included. The first group contained variables mainly related to large facilities. The second group of variables was connected to types of construction and the region's economic potential. The third group was related to demographic characteristics and the employment situation in the region. The fourth group of variables was primarily associated with the elderly population.
- 10 Finally, the fifth group did not show a clear dominance of any variables over others, although certain variables displayed significant correlation with at least one variable (i.e., $p < 0.05$).

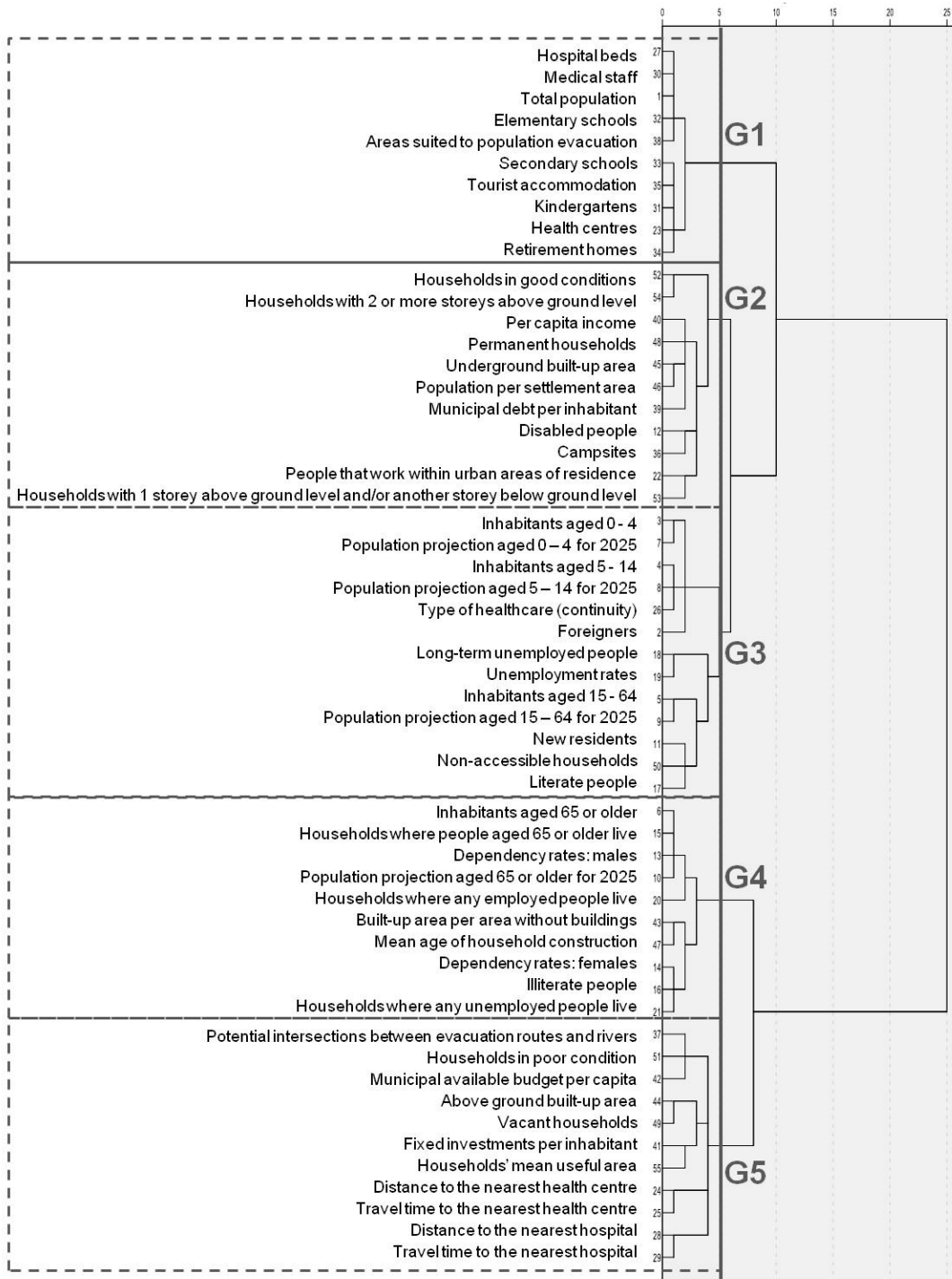


Figure 3: Dendrogram resulting from the HSA. Each rectangle corresponds to an identified group, with a total of five groups (G1, G2, G3, G4 and G5).

A total of 11 vulnerability factors were extracted from the groups of variables identified by the dendrogram (Table 2): 1) total social exposure; 2) exposure in the urban built-up environment; 3) constructive resilience; 4) constructive exposure; 5) youth social sensitivity; 6) mature social resilience; 7) labour social sensitivity; 8) social sensitivity due to dependency; 9) economic resilience due to investments; 10) social hospital sensitivity; and 11) social health sensitivity. In all cases, the KMO scores were higher than 0.5 and the Barlett's test of sphericity values were significant (i.e., $p < 0.05$). For vulnerability factors comprising two variables, the value of the correlation coefficient was indicated instead of the KMO score. Correlation coefficients for these vulnerability factors were considered significant (i.e., $p < 0.05$). In addition, all identified vulnerability factors showed a percentage of explained variance over 70%. Factor loadings were used to allocate names to the vulnerability factors. This enabled vulnerability factors expressing exposure, sensitivity or resilience to be classified. Consequently, factors number one, two and four were considered to express exposure, factors number five, seven, eight, ten and eleven sensitivity, and factors number three, six and nine resilience.

15

20

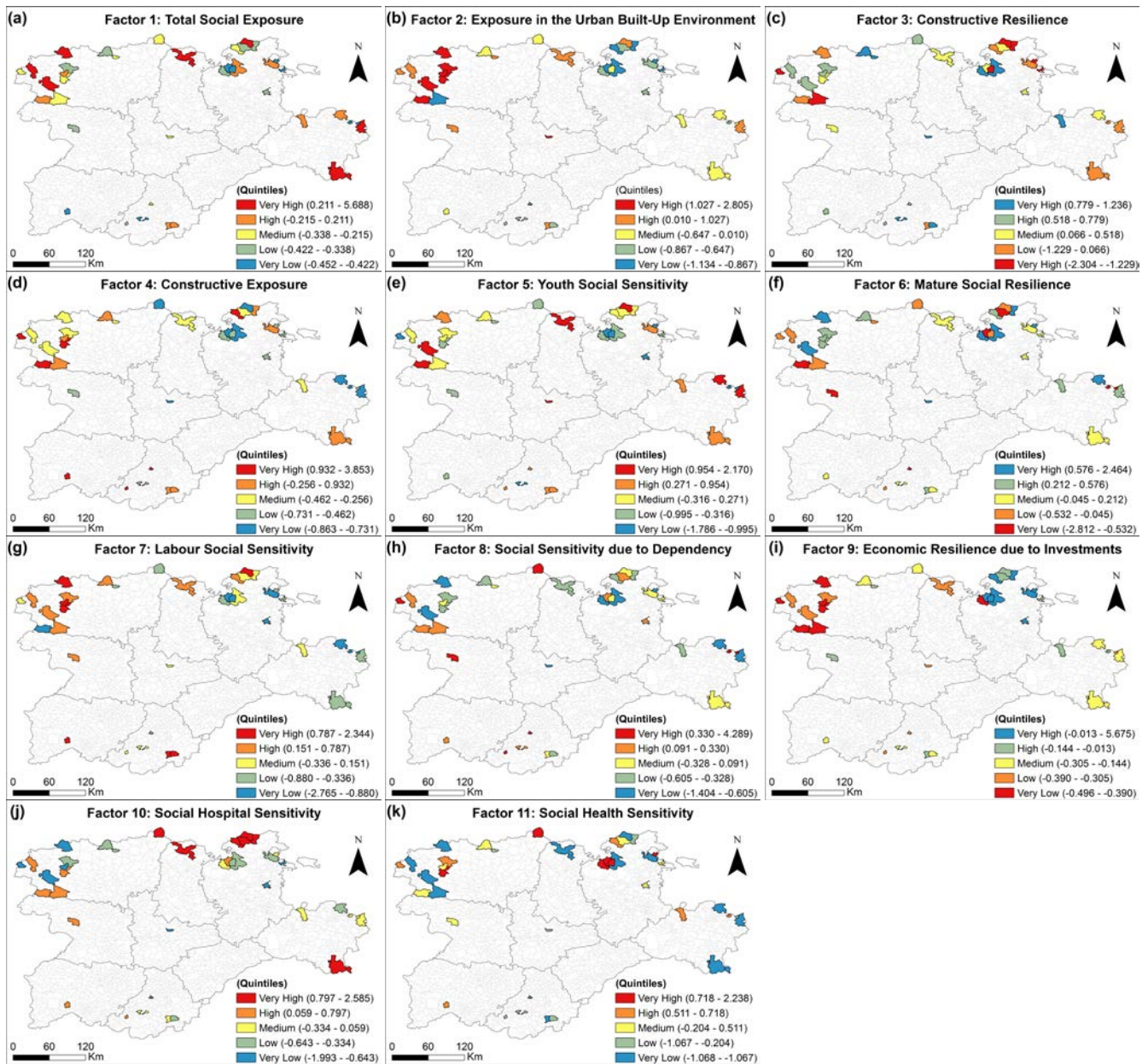
25

30

Table 2: Vulnerability factors identified with the PCA and additional statistical information (PCA results). The sign of the variable loadings indicates whether the correlation among variables making up a certain vulnerability factor is positive or negative.

Factor	Variables	KMO ^a / Correlation coefficient ^b	Explained variance	Loadings	Factor Name	Component	
1	TPOP	Total population	0.846 ^a	83.68	0.968	Total Social Exposure	Exposure
	HEALTH_C	Health centers			0.886		
	H_BEDS	Hospital beds			0.944		
	MED_ST	Medical staff			0.949		
	KINDERG	Kindergartens			0.918		
	ELEM_SCH	Elementary schools			0.974		
	SEC_SCH	Secondary schools			0.932		
	RET_HOME	Retirement homes			0.757		
TOUR_AC	Tourist accommodation	0.886					
2	POP_SETL	Population per settlement area	0.681 ^a	70.82	0.777	Exposure in the Urban Built-Up Environment	Exposure
	VACANT_H	Vacant households			-0.932		
	UNDER_GR	Underground built-up area			0.788		
	PERM_H	Permanent households			0.860		
3	GDCOND	Households in good condition	-0.431 ^b	71.54	0.846	Constructive Resilience	Resilience
	BADCOND	Households in poor condition			-0.846		
4	ST_AGBG	Households with 1 storey above ground level and/or another storey below ground level	-0.655 ^b	82.73	0.910	Constructive Exposure	Exposure
	ST_AGL	Households with 2 or more storeys above ground level			-0.910		
5	POP0	Inhabitants aged 0-4	0.720 ^a	78.03	0.898	Youth Social Sensitivity	Sensitivity
	POP5	Inhabitants aged 5-14			0.901		
	PROJ_0	Population projection aged 0-4 for 2025			0.827		
	PROJ_5	Population projection aged 5-14 for 2025			0.906		
6	POP15	Inhabitants aged 15-64	0.791 ^b	89.55	0.946	Mature Social Resilience	Resilience
	PROJ_15	Population projection aged 15-64 for 2025			0.946		
7	UN_RAT	Unemployment rates	0.692 ^a	75.95	0.912	Labour Social Sensitivity	Sensitivity
	LT_UNEMP	Long-term unemployed people			0.872		
	HS_0UNEMP	Households where any unemployed people live			-0.828		
8	POP65	Inhabitants aged 65 or older	0.704 ^a	70.01	0.944	Social Sensitivity due to Dependency	Sensitivity
	PROJ_65	Population projection aged 65 or older for 2025			0.828		
	DEPRAT_M	Dependency rates: males			0.819		
	DEPRAT_F	Dependency rates: females			0.860		
	HOUSE_OLD	Households where people aged 65 or older live			0.808		
	ILLITER	Illiterate people			0.748		
9	FIX_INV	Fixed investments per inhabitant	0.782 ^b	89.08	0.944	Economic Resilience due to Investments	Resilience
	BUDGET	Municipal available budget per capita			0.944		
10	DIST_H	Distance to the nearest hospital	0.863 ^b	93.16	0.965	Social Hospital Sensitivity	Sensitivity
	TIME_H	Travel time to the nearest hospital			0.965		
11	DIST_HC	Distance to the nearest health centre	0.869 ^b	93.43	0.967	Social Health Sensitivity	Sensitivity
	TIME_HC	Travel time to the nearest health centre			0.967		

5 Factor scores for each vulnerability factor were depicted using the quintiles classification (i.e., 20, 40, 60 and 80 percentiles) with 5 classes: *i*) very low; *ii*) low; *iii*) medium; *iv*) high and *v*) very high (Fig. 4).



5 **Figure 4: Factor scores for identified vulnerability factors. For exposure and sensitivity factors, very high categories are colored in red while for resilience factors, very high categories are colored in blue. Source: municipal boundaries (available on-line: <http://www.ign.es>; accessed on 5 December 2016).**

Figure 5 illustrates the ISVI value for each urban area using the quintiles classification. In this regard, ISVI has high spatial variability, defining values that range from 0.085 to -0.055. Urban areas with the highest ISVI values are mainly concentrated in the northwest, while urban areas with the lowest values are found in the east and northeast of Castilla y

10

León. Each urban area has an associated bar chart showing the decomposition of each ISVI value into its components (exposure, sensitivity and resilience). The direction of the bar indicates whether the sign of the vulnerability component is negative or positive. The height of the bar shows the value of the vulnerability component (each vulnerability component was calculated by combining any vulnerability factors that contributed to each component, taking factor scores and different weights into consideration). In addition, the numbers located in each bar show categories based on the classification of the quintiles in which each vulnerability component is found. Number 1 is associated with a very low category (i.e., very low exposure, sensitivity and resilience) and number 5 with a very high category (i.e., very high exposure, sensitivity and resilience).

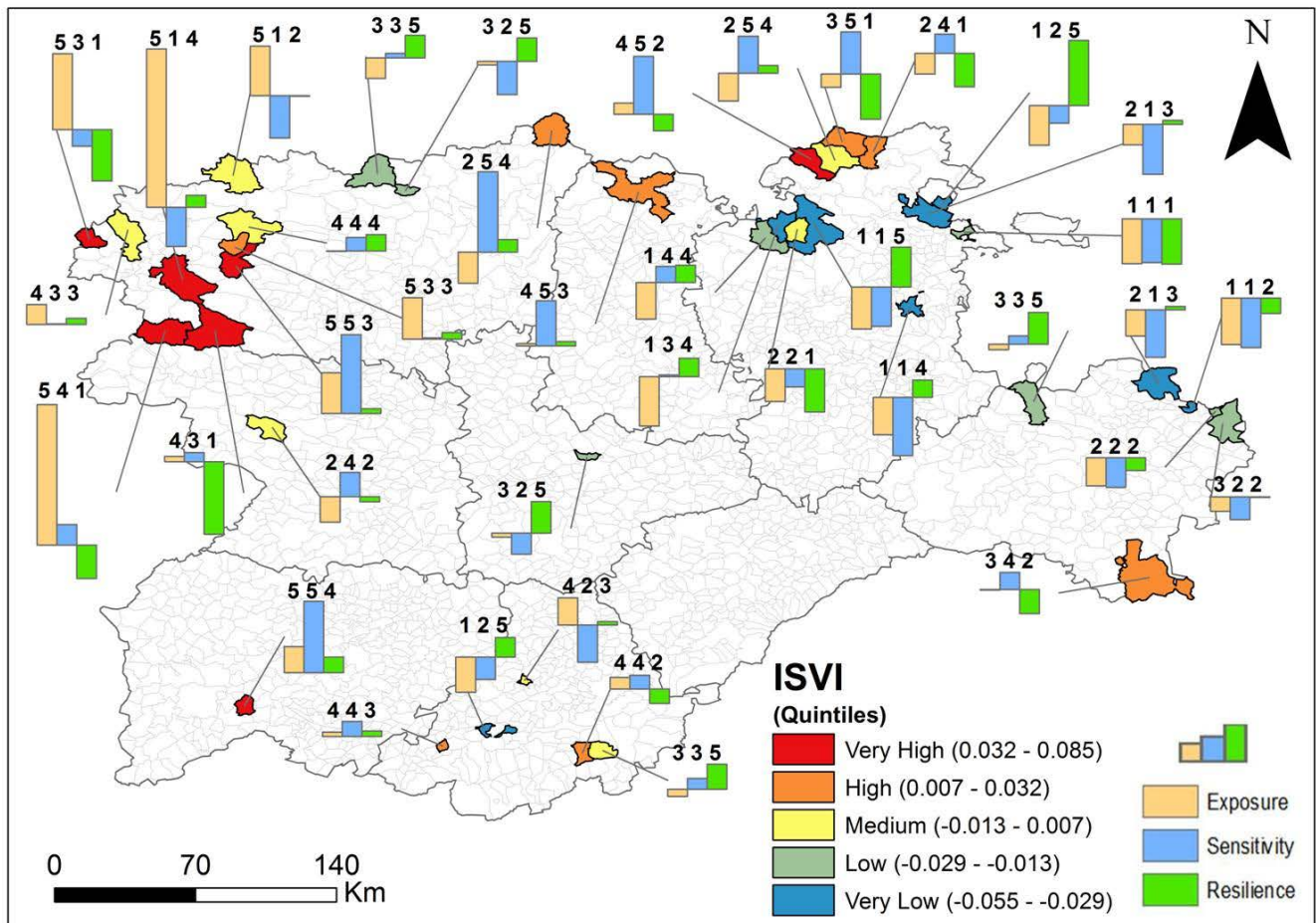


Figure 5: ISVI values and its decomposition into vulnerability components. Source: municipal boundaries (available on-line: <http://www.ign.es>; accessed on 5 December 2016).

3.2 Social vulnerability patterns

BIC and CAIC statistics were used to select the more parsimonious number of clusters (i.e., the number of clusters that provides as much information as possible **when** the number of estimated parameters **are taken into account**). The minimum values of BIC and CAIC determined that the optimum number of clusters of urban areas was three (Table 3).

5

Table 3: Model fit summary of latent class cluster models initially considered.

	Log-likelihood (LL)	BIC (LL)	CAIC (LL)	Number of parameters
One cluster	-603.153	1286.904	1308.904	22
Two clusters	-501.287	1167.435	1212.435	45
Three clusters*	-440.610	1130.342	1198.342	68
Four clusters	-407.146	1147.675	1238.675	91
Five clusters	-381.371	1180.388	1294.388	114

***Best model according to BIC and CAIC**

10

In order to **assess** vulnerability factor usefulness in terms of identifying these patterns, the parameters for each identified cluster are shown in Table 4. Neither the "social hospital sensitivity" factor nor the "economic resilience due to investments" factor was statistically significant when discriminating among the three clusters of urban areas ($p > 0.05$, highlighted in bold in Table 4). The percentage given under each cluster title shows the proportion of urban areas making up each cluster.

15

Table 4: Parameters of urban area clusters associated with vulnerability factors. Vulnerability factors are sorted by vulnerability component (exposure, sensitivity and resilience)

Vulnerability factors	Cluster 1 (51.1%)	Cluster 2 (30.9%)	Cluster 3 (18.0%)	Robust Wald statistic	p-value	R ²
Factor 1: Total Social Exposure	-0.295	-0.549	0.844	9.794	0.008	0.244
Factor 2: Exposure in the Urban Built-Up Environment	-0.054	-0.708	0.779	37.071	0.000	0.428
Factor 4: Constructive Exposure	0.659	-0.253	-0.406	13.871	0.001	0.240
Factor 5: Youth Social Sensitivity	-0.012	-0.998	1.010	30.913	0.000	0.478
Factor 7: Labour Social Sensitivity	0.487	-0.740	0.253	16.665	0.000	0.303
Factor 8: Social Sensitivity due to Dependency	0.092	0.706	-0.798	38.442	0.000	0.262
Factor 10: Social Hospital Sensitivity	0.309	0.302	-0.611	3.363	0.190	0.127
Factor 11: Social Health Sensitivity	-0.012	0.860	-0.848	34.559	0.000	0.350
Factor 3: Constructive Resilience	-0.020	-0.418	0.438	6.017	0.049	0.087
Factor 6: Mature Social Resilience	-0.204	-0.501	0.704	20.442	0.000	0.174
Factor 9: Economic Resilience due to Investments	-0.307	0.593	-0.286	3.740	0.150	0.175

Finally, Figure 6 shows the three different clusters of identified urban areas, which help to characterize the profile of each detected pattern. Moreover, each cluster is associated with a bar chart depicting the cluster profile over the most representative urban area in each of them. This is calculated from the number of coincidences among the signs and the minimum distances between factor scores for each urban area and the mean factor scores for each identified cluster. The bar charts include the standard deviation values from the mean for each vulnerability factor, values that are located above each bar. The direction of the bar is related to the sign of these standard deviation values, that is: positive values for factors expressing exposure or sensitivity indicate more exposure or sensitivity than the cluster mean but positive values for factors expressing resilience indicate more resilience than the cluster mean. Each cluster can be characterized thus:

- 10 - Cluster 1 comprises 51.1% of urban areas of interest (i.e., a total of 20) and is made up of urban areas with the highest levels of constructive exposure and labour social sensitivity factors.
- 15 - Cluster 2 comprises 30.9% of urban areas (i.e., a total of 12). It contains urban areas with the highest levels of social health sensitivity and social sensitivity due to dependency factors. On the other hand, with regard to youth social sensitivity and labour social sensitivity factors, these urban areas show the lowest levels. Also included here are urban areas with the lowest levels of total social exposure and exposure in the urban built-up environment. Regarding resilience factors, the lowest levels of factors associated with constructive resilience and mature social resilience are in the urban areas found in cluster 2.
- 20 - Cluster 3 comprises 18.0% of urban areas (i.e., a total of 7). It is made up of urban areas with the highest values in factors related to total social exposure, exposure in the urban built-up environment and youth social sensitivity. These urban areas also show the highest values in the constructive resilience factor and the lowest values in the constructive exposure factor. On the other hand, they show the lowest values in factors related to social sensitivity due to dependency and social health sensitivity. The highest values of the mature social resilience factor are also
25 found in these urban areas.

It seems that there is a relationship between the ISVI and the clusters to which urban areas belong (Figure 6). In this regard, there are only significant differences between the ISVI values of clusters 1 and 2 (i.e., $p < 0.05$; ANOVA analysis). Moreover, it is verified that cluster 1 urban areas are more vulnerable than cluster 2 urban areas, with an ISVI mean value of
30 0.013 and -0.017, respectively.

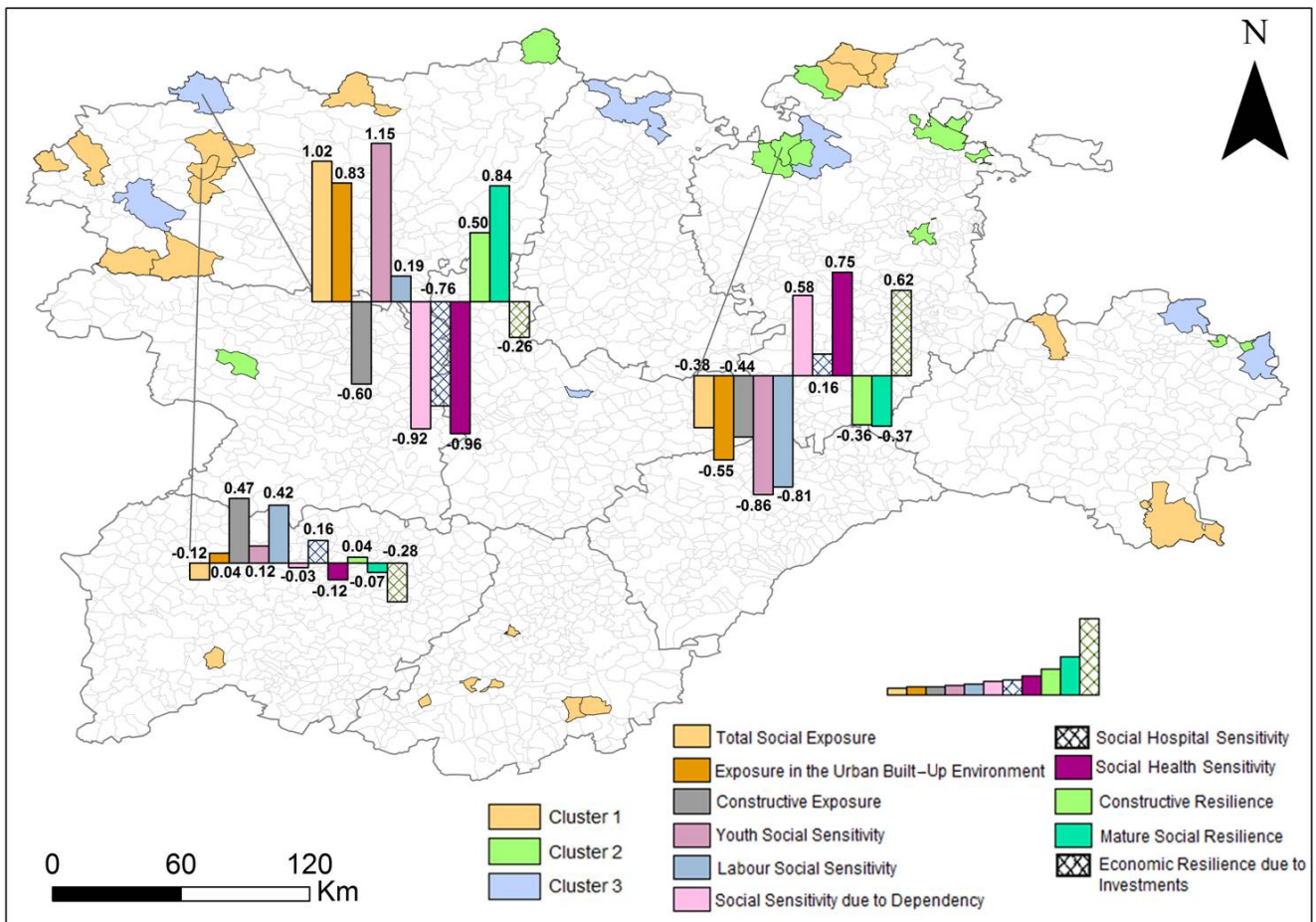


Figure 6: Characteristics of the urban areas that form the identified clusters. Bars with a meshed plot represent factors which were not statistically significant in the discrimination of clusters of urban areas. Bars are sorted by vulnerability component (exposure, sensitivity and resilience). Source: municipal boundaries (available on-line: <http://www.ign.es>; accessed on 5 December 2016).

5

4 Discussion

4.1 Data sources and methodology

Flash floods usually affect small mountainous urban areas (Marchi et al., 2010; Terti et al., 2015). Generally, the information available in these areas is limited, either because it is not available in public databases (i.e., it has to be requested from different councils) or because it is not generated on this work scale (i.e., it is estimated from a bigger work scale). This imposes limits on any assessment related to flash floods (Ruin et al., 2009). However, this constraint does not usually apply to studies on fluvial floods since, in terms of population, these frequently affect significant urban areas, which generally means greater availability of data and a larger number of event records. It is also worth mentioning that it is very difficult not

10

to include data from different years in this type of analysis related to flash floods, since different databases are usually consulted and each public agency has its own mechanisms for updating data.

5 This lack of information may condition the selected work scale, which should coincide with the scale of planning for flood risk mitigation (Cash and Moser, 2000). An insufficient work scale could result in homogeneous vulnerability reduction measures being put in place in areas where the spatial variability of vulnerability is high. This would reduce their effectiveness and might not guarantee a uniform reduction in vulnerability (Eakin and Luers, 2006; Frazier et al., 2014). In this study, the selected work scale was the urban area, as this entity tends to be small and homogeneous in the region of Castilla y León. Furthermore, sensitivity and resilience are usually considered as static components (i.e., the results give a snapshot of vulnerability) when in fact they vary over time and space (Cutter et al., 2003; Eakin and Luers, 2006). The identification of spatial patterns here represents a step forward towards improving FRM on a regional scale. Regarding temporal variability, we suggest periodic monitoring of identified variables as an explanation of social vulnerability to flash floods. Periodic recalculations would allow urban areas to keep informed about the behavior of SVI values over time.

15 As regards calculation of the ISVI, it is crucial that ISVI values should not be considered as absolute. This means that the ISVI can be used qualitatively to determine whether one urban area is more vulnerable than the others and, if so, to what extent (Cutter et al., 2013). In the methodology proposed here, conducting a preliminary HSA helps overcome the limitations of the PCA sample size (Sarstedt and Mooi, 2014). Most published works either do not discuss this aspect or tackle it by adding the variables directly (Balteanu et al., 2015). The HSA enables the vulnerability variables to be divided into groups. However, it did not provide information on the relative significance of variables within each group, making it necessary to subsequently perform a PCA (Cutter et al., 2003; Fekete, 2009; Cutter et al., 2013; Nelson et al., 2015; Hummell et al., 2016). Regarding the weighting method used here, although many authors support the idea of assigning the factors with equal weight (Chakraborty et al., 2005), it seems reasonable to suppose that not all factors have the same importance in the construction of the ISVI (Brooks et al., 2005; Eakin and Luers, 2006; Liu and Li, 2016), especially when there may be variations in the number of variables forming each factor and their explained variance. It is even possible that there is a spatial variation in each factor's importance. This can be solved by carrying out geographically weighted principal component analysis (GWPCA) (Frazier et al., 2014; Gollini et al., 2015).

4.2 Integrated social vulnerability and variables involved

30 In spite of differences among variables, considered in literature as a means of explaining social vulnerability, there are some key variables common to all the indicators examined, such as age, gender, race, socio-economic status and living conditions (Cutter et al., 2003; Adger et al., 2004; Penning-Rowsell et al., 2005; Frazier et al., 2014). However, each region has its own particular characteristics and constraints and these should be taken into consideration during the variable selection procedure

(Frazier et al., 2014). Vulnerability factors identified in Castilla y León (see Table 2) reflect the specific characteristics of this region, whose cartographic representation gives us an idea of the spatial distribution of vulnerability and helps us spatially identify vulnerability hotspots (see Fig. 4). Vulnerability factors making up the exposure component (see Fig. 4 (a), (b) and (d)) are mainly related to public buildings such as schools, kindergartens and health facilities ('Total Social Exposure' factor). They are usually occupied by sensitive people (e.g., small children, the elderly, the sick, etc.), who generally require external assistance during an evacuation due to flash floods. Moreover, the single-family dwellings that abound in the study area tend to have basements as well as ground floor rooms (i.e., living rooms, kitchens and sometimes bedrooms; 'Exposure in the Urban Built-up Environment' and 'Constructive Exposure' factors), spaces which are both prone to flooding (Bodoque et al., 2016b; Karagiorgos et al., 2016).

With regard to the vulnerability factors that make up the sensitivity component (see Fig. 4 (e), (g), (h), (j) and (k)), urban areas of interest have a mean dependency rate higher than 70% ('Social Sensitivity due to Dependency' factor). This is due particularly to the presence of elderly people, who may hinder the population evacuation process as they tend to have reduced mobility. Moreover, the elderly usually need economic support in the post-disaster period (Cutter et al., 2003). Unemployment is another vulnerability factor to be considered ('Youth Social Sensitivity' and 'Labour Social Sensitivity' factors). It is related to the possible inability of a household to invest economical resources in flood insurance or in flood mitigation measures, all of which contributes to slower recovery (Cutter et al., 2003; Fekete, 2010). As far as accessibility to health facilities is concerned ('Social Hospital Sensitivity' and 'Social Health Sensitivity' factors), the frequent lack of nearby medical services in the urban areas studied may hamper the provision of immediate relief and extend disaster recovery time (Cutter et al., 2003).

Finally, with regard to the resilience component (see Fig. 4 (c), (f) and (i)), the structural capacity of households in good condition to cope with flood impacts was considered to be high ('Constructive Resilience' factor), so direct losses and repair costs would be lower (Cutter et al., 2003). Inhabitants aged 15 to 64 were also deemed to be a resilient factor ('Mature Social Resilience' factor), since they are able to help evacuate people during a flash flood event (Fekete, 2010). Lastly, urban areas with a higher public budget available per capita may implement a larger number of mitigation measures aimed at reducing flood damage ('Economic Resilience due to Investments' factor). Fixed investments per capita are related to the level of economic wealth, and this can determine the ability to absorb losses and enhance resilience (e.g., through the implementation of individual flood risk mitigation measures) (Kunreuther et al., 2013; Haer et al., 2016).

Integrated social vulnerability assessment analyzes interactions among the different vulnerability components and even between these and the ISVI (see Fig. 5). In addition, there is great heterogeneity in the combination of vulnerability components that generate the different ISVI categories. Despite this, the most vulnerable urban areas have the highest exposure component values. Urban areas in the high ISVI category usually have higher values for the sensitivity component

than for exposure, although exposure quintile categories range from 2 to 5. Urban areas included in very low and low ISVI categories have the highest resilience component values, coinciding with the lowest levels of exposure. Thus, the highest ISVI values are mainly controlled by the exposure component.

5 These variations in ISVI values confirm the idea supported by other authors that vulnerability has a high spatial variability and therefore cannot be treated homogeneously (Cutter et al., 2008; Frazier et al., 2014). Integrated social vulnerability assessments not only help identify which factors should be acted upon to reduce vulnerability, but also which of these factors should be strengthened to increase resilience. In the same way, the identification of vulnerability patterns (see Fig. 6) also helps us discern the sources of vulnerability and resilience within each cluster of urban areas, in particular whether these influences are direct or inverse and how strong they are. This facilitates the development of specific FRM strategies for each cluster. The optimum number of clusters can be established from BIC and CAIC criteria (in this case 3 clusters). From a practical point of view, the above means that an increase in the number of clusters from 3 to 4 or 5 would split a fairly homogeneous cluster of urban areas into several subgroups which would not be very different from each other. Therefore, a greater level of disaggregation would not help improve the implementation of different flood risk mitigation measures for each cluster of urban areas.

4.3 Policy implications

The high human and economic losses due to flash floods that continue today (Wilhelmi and Morss, 2013) draw attention to the need for a change in traditional FRM towards an integrated approach requiring comprehensive analysis of the social risk component (Koks et al., 2015). It is therefore essential to carry out a social vulnerability analysis from a holistic point of view. It is important not only to identify which socio-economic and demographic characteristics increase population sensitivity to flash flood damage but also to know which features increase a population's capacity to resist, cope with and recover from its impact (Cutter et al., 2010; Frazier et al., 2014; Zhou et al., 2015), as demonstrated here. This would enable local competent authorities to plan and implement specific strategies to reduce vulnerability and strengthen resilience, in addition to developing specific mitigation measures to reduce flood risks (Frazier et al., 2014; Nelson et al., 2015; Hummell et al., 2016). It is an approach that goes further than the traditional one of seeking to reduce flood hazard by delineating flood-prone areas and designing structural mitigation measures.

The identification of social vulnerability patterns can help to identify the most suitable mitigation measures for each cluster of urban areas identified by LCCA, and also prioritize available resources. For instance, mitigation measures for those urban areas included in cluster 1 should be targeted towards improving physical resilience (e.g. raising the first-floor elevation above ground level) and giving the population financial help to put mitigation measures in place (e.g. providing financial aid for dwellings located in flood-prone areas). On the other hand, people living in the urban areas included in cluster 2 are

highly dependent on external assistance due to the high rates of ageing population. Therefore, different evacuation routes should be designed and clearly defined by the emergency services, and shelters constructed near these urban areas. Finally, mitigation measures for urban areas included in cluster 3 should be aimed at collective facilities (e.g. carrying out flood emergency drills) and should encourage the implementation of individual mitigation strategies (e.g. through a financial incentive system, such as repayment of part of the money spent on municipal taxes).

However, in order to achieve greater effectiveness for FRM plans, it is necessary for all stakeholders, both public authorities and communities, to engage with them (Eakin and Luers, 2006; Koks et al., 2015; Haer et al., 2016). This is especially important in small mountainous areas prone to flash flooding because they are managed by local administrations where available economic resources tend to be limited. This makes individual adaptation measures particularly relevant as they partly depend on risk perception and the level of awareness (Bodoque et al., 2016a). Furthermore, both individual social networks and social contexts are of key importance in decision-making related to public preparedness (Haer et al., 2016). Since the social component plays a decisive role, a suitable design is required for flood risk communication strategies to accompany integrated social vulnerability analysis. Traditional top-down communication strategies have proven ineffective and a change towards people-centered strategies is currently taking place which seeks to reflect population heterogeneity (Bodoque et al., 2016a; Haer et al., 2016). Therefore, a comprehensive characterization of the social component of flood risk requires not only an integrated social vulnerability assessment, but also that the people affected are aware of their situation and have the appropriate knowledge to reduce possible flood impacts at individual level (Albano et al., 2015) so that social learning can be translated into disaster risk reduction (Cutter et al., 2008).

5 Conclusions

A comprehensive characterization of social vulnerability is critical for an integrated FRM. The implementation of an HSA helps to overcome PCA sample size limitation. This means using an alternative methodology to the one usually used to construct an ISVI in areas where available data is limited. The results show the high spatial heterogeneity of social vulnerability within the study region and the high variability in ISVI scores regarding interactions between vulnerability components, which give integrated analysis greater importance. The identification of vulnerability patterns through LCCA gives the sources of vulnerability in each urban area. This simplifies the spatial heterogeneity analysis of social vulnerability and indicates which aspects need to be improved to decrease sensitivity and exposure and which aspects need to be reinforced to increase resilience. This allows the ISVI results to be more effectively integrated into FRM plans and policies, which in turn enables specific strategies of vulnerability reduction to be proposed, thereby increasing their efficiency.

30

Author contribution

E. Aroca-Jimenez built the database and wrote the manuscript with contributions from all the co-authors. Jose M. Bodoque conceived the research and critically reviewed the manuscript. Juan A. Garcia designed the statistical approach, which was implemented by E. Aroca-Jimenez and J.A. García. A. Díez-Herrero critically reviewed the manuscript and designed Figure

5 2. The authors declare that they have no conflict of interest.

Acknowledgements

This research has been funded by the MARCoNI Project (MINECO, CGL2013-42728-R) of the Spanish National Plan for Scientific and Technical Research and Innovation. The authors wish to thank the following for their help: the Castilla y León regional government and regional employment observatory; Regional Civil Protection Department of National Government (José Luis González Álvarez, Roberto Martínez-Alegría López and volunteers); and finally all the municipal councils included in this study. The authors would also like to thank Dr. Susan Cutter, Hazards and Vulnerability Research Institute (University of South Carolina), for her helpful comments on an earlier draft of the paper. The authors are also grateful to the anonymous reviewers for their recommendations and suggestions that greatly improved the manuscript.

15

References

Adger, W. N., Brooks, N., Bentham, G., Agnew, M., and Eriksen, S.: New indicators of vulnerability and adaptive capacity, Tyndall Centre Technical Reports, Tyndall Centre for Climate Change Research Norwich, 128 pp., http://www.tyndall.ac.uk/sites/default/files/it1_11.pdf, 2004.

20 Adger, W. N.: Vulnerability, *Global Environmental Change-Human and Policy Dimensions*, 16, 268-281, doi: 10.1016/j.gloenvcha.2006.02.006, 2006.

Albano, R., Sole, A., and Adamowski, J.: READY: a web-based geographical information system for enhanced flood resilience through raising awareness in citizens, *Natural Hazards and Earth System Sciences*, 15, 1645-1658, doi: 10.5194/nhess-15-1645-2015, 2015.

25 Asadzadeh, A., Kotter, T., and Zebardast, E.: An augmented approach for measurement of disaster resilience using connective factor analysis and analytic network process (F'ANP) model, *International Journal of Disaster Risk Reduction*, 14, 504-518, doi: 10.1016/j.ijdr.2015.10.002, 2015.

Balteanu, D., Micu, D., Costache, A., Diana, D., Persu, M., and Sgem: Socio-economic Vulnerability to Floods and Flash-floods in the Bend Subcarpathians, Romania, 15th International Multidisciplinary Scientific Geoconference (SGEM), Albena, Bulgaria, 577-584, WOS:000371663400074, 2015.

30 Barredo, J. I.: Major flood disasters in Europe: 1950–2005, *Natural Hazards*, 42, 125-148, doi: 10.1007/s11069-11006-19065-11062, 2007.

Birkmann, J.: *Measuring Vulnerability to Natural Hazards: Towards Disaster Resilient Societies*, United Nations University Press, 720 pp., 2013.

- Birkmann, J., Cardona, O. D., Carreno, M. L., Barbat, A. H., Pelling, M., Schneiderbauer, S., Kienberger, S., Keiler, M., Alexander, D., Zeil, P., and Welle, T.: Framing vulnerability, risk and societal responses: the MOVE framework, *Natural Hazards*, 67, 193-211, doi: 10.1007/s11069-013-0558-5, 2013.
- 5 Blaikie, P., Cannon, T., Davis, I., and Wisner, B.: *At risk: natural hazards, people's vulnerability, and disasters*, Routledge, London, 304 pp., 1994.
- Bodoque, J. M., Díez-Herrero, A., Eguibar, M. A., Benito, G., Ruiz-Villanueva, V., and Ballesteros-Canovas, J. A.: Challenges in paleoflood hydrology applied to risk analysis in mountainous watersheds - A review, *Journal of Hydrology*, 529, 449-467, doi: 10.1016/j.jhydrol.2014.12.004, 2015.
- 10 Bodoque, J. M., Amérigo, M., Díez-Herrero, A., García, J. A., Cortés, B., Ballesteros-Cánovas, J. A., and Olcina, J.: Improvement of resilience of urban areas by integrating social perception in flash-flood risk management, *Journal of Hydrology*, 541, 665-676, <http://dx.doi.org/10.1016/j.jhydrol.2016.02.005>, 2016a.
- Bodoque, J. M., Guardiola-Albert, C., Aroca-Jiménez, E., Eguibar, M. A., and Martínez-Chenoll, M. L.: Flood Damage Analysis: First Floor Elevation Uncertainty Resulting from LiDAR-Derived Digital Surface Models, *Remote Sensing*, 8, 604, doi: 10.3390/rs8070604, 2016b.
- 15 Borga, M.: Forecasting, Early Warning and Event Management: Non-structural Protection Measures for Flash Floods and Debris Flows, in: *Dating Torrential Processes on Fans and Cones: Methods and Their Application for Hazard and Risk Assessment*, edited by: Schneuwly-Bollschweiler, M., Stoffel, M., and Rudolf-Miklau, F., *Advances in Global Change Research*, 47, Springer Netherlands, 439, doi: 10.1007/978-94-007-4336-6_27, 2013.
- 20 Brooks, N., Adger, W. N., and Kelly, P. M.: The determinants of vulnerability and adaptive capacity at the national level and the implications for adaptation, *Global Environmental Change-Human and Policy Dimensions*, 15, 151-163, doi: 10.1016/j.gloenvcha.2004.12.006, 2005.
- Burton, C., and Cutter, S. L.: Levee failures and social vulnerability in the Sacramento-San Joaquin Delta area, California, *Natural Hazards Review*, 9, 136-149, doi: 10.1061/(asce)1527-6988(2008)1069:1063(1136), 2008.
- 25 Caballero, F. J., Perotas, H., Guerrero, J., Martínez, B., Fernández, I., Goya, R., and Cuadrado, M. A.: *El Sistema Nacional de Cartografía de Zonas Inundables en la Demarcación Hidrográfica del Duero, III Jornadas de Ingeniería del Agua (JIA 2011)*, Barcelona, <http://www.ingenieriadelagua.com/2004/JIA/Jia2011/pdf/p505.pdf>, 2011.
- Cash, D. W., and Moser, S. C.: Linking global and local scales: designing dynamic assessment and management processes, *Global Environmental Change-Human and Policy Dimensions*, 10, 109-120, doi: 10.1016/s0959-3780(00)00017-0, 2000.
- 30 Chakraborty, J., Tobin, G. A., and Montz, B. E.: Population evacuation: assessing spatial variability in geophysical risk and social vulnerability to natural hazards, *Natural Hazards Review*, 6, 23-33, doi: 10.1061/(asce)1527-6988(2005)1066:1061(1023), 2005.
- Clark, G. E., Moser, S. C., Ratick, S. J., Dow, K., Meyer, W. B., Emani, S., Jin, W., Kasperson, J. X., Kasperson, R. E., and Schwarz, H. E.: Assessing the vulnerability of coastal communities to extreme storms: the case of Revere, MA., USA, *Mitigation and adaptation strategies for global change*, 3, 59-82, doi: 10.1023/a:1009609710795, 1998.
- 35 Cutter, S.L.: Vulnerability to environmental hazards, *Progress in Human Geography*, 20, 529-539, doi: 10.1177/030913259602000407, 1996.
- Cutter, S. L., Boruff, B. J., and Shirley, W. L.: Social vulnerability to environmental hazards, *Social Science Quarterly*, 84, 242-261, doi: 10.1111/1540-6237.8402002, 2003.
- 40 Cutter, S. L., Barnes, L., Berry, M., Burton, C., Evans, E., Tate, E., and Webb, J.: A place-based model for understanding community resilience to natural disasters, *Global Environmental Change-Human and Policy Dimensions*, 18, 598-606, doi: 10.1016/j.gloenvcha.2008.07.013, 2008.
- Cutter, S. L., Burton, C. G., and Emrich, C. T.: Disaster Resilience Indicators for Benchmarking Baseline Conditions, *Journal of Homeland Security and Emergency Management*, 7, doi: 10.2202/1547-7355.1732, 2010.
- 45 Cutter, S. L., Emrich, C. T., Morath, D. P., and Dunning, C. M.: Integrating social vulnerability into federal flood risk management planning, *Journal of Flood Risk Management*, 6, 332-344, doi: 10.1111/jfr3.12018, 2013.

- Dwyer, A., Zoppou, C., Nielsen, O., Day, S., and Roberts, S.: Quantifying social vulnerability: a methodology for identifying those at risk to natural hazards, *Geoscience Australia Record 2004/14*, Australia, 92 pp., <http://www.geosci.usyd.edu.au/users/prey/Teaching/Geos-2111GIS/Ref/GA4267-IdentifyingRisks.pdf>, 2004.
- 5 Eakin, H., and Luers, A. L.: Assessing the vulnerability of social-environmental systems, *Annual Review of Environment and Resources*, 31, 365-394, doi: 10.1146/annurev.energy.30.050504.144352, 2006.
- Fekete, A.: Validation of a social vulnerability index in context to river-floods in Germany, *Natural Hazards and Earth System Sciences*, 9, 393-403, doi: 10.5194/nhess-5199-5393-2009, 2009.
- Fekete, A.: Assessment of Social Vulnerability River Floods in Germany, United Nations University, Institute for Environment and Human Security (UNU-EHS), 130 pp., <http://collections.unu.edu/eserv/UNU:1978/pdf8069.pdf>, 2010.
- 10 Frazier, T. G., Thompson, C. M., and Dezzani, R. J.: A framework for the development of the SERV model: A Spatially Explicit Resilience-Vulnerability model, *Applied Geography*, 51, 158-172, doi: 10.1016/j.apgeog.2014.04.004, 2014.
- Frigerio, I., Ventura, S., Strigaro, D., Mattavelli, M., De Amicis, M., Mugnano, S., and Boffi, M.: A GIS-based approach to identify the spatial variability of social vulnerability to seismic hazard in Italy, *Applied Geography*, 74, 12-22, doi: 10.1016/j.apgeog.2016.06.014, 2016.
- 15 Fuessel, H. M.: Vulnerability: A generally applicable conceptual framework for climate change research, *Global Environmental Change-Human and Policy Dimensions*, 17, 155-167, doi: 10.1016/j.gloenvcha.2006.05.002, 2007.
- Gollini, I., Lu, B. B., Charlton, M., Brunson, C., and Harris, P.: GWmodel: An R Package for Exploring Spatial Heterogeneity Using Geographically Weighted Models, *Journal of Statistical Software*, 63, 1-50, doi: 10.18637/jss.v18063.i18617, 2015.
- 20 Grosso, N., Dias, L., Costa, H. P., Santos, F. D., and Garrett, P.: Continental Portuguese Territory Flood Social Susceptibility Index, *Natural Hazards and Earth System Sciences*, 15, 1921-1931, doi: 10.5194/nhess-15-1921-2015, 2015.
- Haer, T., Botzen, W. J. W., and Aerts, J.: The effectiveness of flood risk communication strategies and the influence of social networks-Insights from an agent-based model, *Environmental Science & Policy*, 60, 44-52, doi: 10.1016/j.envsci.2016.03.006, 2016.
- 25 Hummell, B. M. D., Cutter, S. L., and Emrich, C. T.: Social Vulnerability to Natural Hazards in Brazil, *International Journal of Disaster Risk Science*, 7, 111-122, doi: 10.1007/s13753-016-0090-9, 2016.
- Huntington, T. G.: Evidence for intensification of the global water cycle: Review and synthesis, *Journal of Hydrology*, 319, 83-95, doi: 10.1016/j.jhydrol.2005.07.003, 2006.
- 30 Karagiorgos, K., Thaler, T., Hubl, J., Maris, F., and Fuchs, S.: Multi-vulnerability analysis for flash flood risk management, *Natural Hazards*, 82, 63-87, doi: 10.1007/s11069-016-2296-y, 2016.
- Koks, E. E., de Moel, H., Aerts, J., and Bouwer, L. M.: Effect of spatial adaptation measures on flood risk: study of coastal floods in Belgium, *Regional Environmental Change*, 14, 413-425, doi: 10.1007/s10113-013-0514-7, 2014.
- Koks, E. E., Jongman, B., Husby, T. G., and Botzen, W. J. W.: Combining hazard, exposure and social vulnerability to provide lessons for flood risk management, *Environmental Science & Policy*, 47, 42-52, doi: 10.1016/j.envsci.2014.10.013, 2015.
- 35 Kunreuther, H., Meyer, R., and Michel-Kerjan, E.: Overcoming decision biases to reduce losses from natural catastrophes, *Behavioral foundations of policy*, 398-413, http://opim.wharton.upenn.edu/risk/library/C2009_HK,RJM,EMK.pdf, 2013.
- Liu, D. L., and Li, Y.: Social vulnerability of rural households to flood hazards in western mountainous regions of Henan province, China, *Natural Hazards and Earth System Sciences*, 16, 1123-1134, doi: 10.5194/nhess-16-1123-2016, 2016.
- 40 Llasat, M., López, L., Barnolas, M., and Llasat-Botija, M.: Flash-floods in Catalonia: the social perception in a context of changing vulnerability, *Advances in Geosciences*, 17, 63-70, doi: 10.5194/adgeo-5117-5163-2008, 2008.
- Marchi, L., Borga, M., Preciso, E., and Gaume, E.: Characterisation of selected extreme flash floods in Europe and implications for flood risk management, *Journal of Hydrology*, 394, 118-133, doi: 10.1016/j.jhydrol.2010.07.017, 2010.
- 45 Martín, P. J., Lafuente, M., and Faura, Ú.: Análisis de conglomerados (cluster analysis), in: *Guía Práctica de Estadística aplicada a la empresa y al marketing*, edited by: Paraninfo, E., Madrid, 180, 2015.

- Mechler, R., Bouwer, L. M., Linnerooth-Bayer, J., Hochrainer-Stigler, S., Aerts, J. C. J. H., Surminski, S., and Williges, K.: COMMENTARY: Managing unnatural disaster risk from climate extremes, *Nature Climate Change*, 4, 235-237, doi: 10.1038/nclimate2137, 2014.
- 5 Mollah, S.: Assessment of flood vulnerability at village level for Kandi block of Murshidabad district, West Bengal, *Current Science*, 110, 81-86, doi: 10.18520/cs/v18110/i18521/18581-18598, 2016.
- Morin, A. J. S., Morizot, J., Boudrias, J. S., and Madore, I.: A Multifoci Person-Centered Perspective on Workplace Affective Commitment: A Latent Profile/Factor Mixture Analysis, *Organizational Research Methods*, 14, 58-90, doi: 10.1177/1094428109356476, 2011.
- 10 Nelson, K. S., Abkowitz, M. D., and Camp, J. V.: A method for creating high resolution maps of social vulnerability in the context of environmental hazards, *Applied Geography*, 63, 89-100, doi: 10.1016/j.apgeog.2015.06.011, 2015.
- Ocio, D., Stocker, C., Eraso, A., Martinez, A., and de Galdeano, J. M. S.: Towards a reliable and cost-efficient flood risk management: the case of the Basque Country (Spain), *Natural Hazards*, 81, 617-639, doi: 10.1007/s11069-015-2099-6, 2016.
- Pandey, R., and Bardsley, D. K.: Social-ecological vulnerability to climate change in the Nepali Himalaya, *Applied Geography*, 64, 74-86, doi: 10.1016/j.apgeog.2015.09.008, 2015.
- 15 Penning-Rowsell, E., Tapsell, S., and Wilson, T.: Key policy implications of the health effects of floods, *Extreme Weather Events and Public Health Responses*, 207-223, doi: 10.1007/3-540-28862-7_20, 2005.
- Pérez, C.: *Técnicas de análisis multivariante de datos: aplicaciones con SPSS*, Pearson Educación, Madrid, 672 pp., 2004.
- Rogelis, M. C., Werner, M., Obregon, N., and Wright, N.: Regional prioritisation of flood risk in mountainous areas, *Natural Hazards and Earth System Sciences*, 16, 833-853, doi: 10.5194/nhess-16-833-2016, 2016.
- 20 Ruin, I., Creutin, J.-D., Anquetin, S., Grunfest, E., and Lutoff, C.: Human vulnerability to flash floods: Addressing physical exposure and behavioural questions, *Flood risk management: research and practice proceedings of the European Conference on Flood Risk Management Research into Practice (FLOODrisk 2008)*, Oxford, UK, 30 September-2 October 2008, 1005-1012, doi: 10.1201/9780203883020.ch116, 2009.
- 25 Sarstedt, M., and Mooi, E.: *A Concise Guide to Market Research: The Process, Data, and Methods Using IBM SPSS Statistics*. Springer (Ed.), Springer Texts in Business and Economics, Springer-Verlag Berlin Heidelberg, <http://link.springer.com/book/10.1007%2F978-3-642-12541-6>, 2014.
- Siebeneck, L., Arlikatti, S., and Andrew, S. A.: Using provincial baseline indicators to model geographic variations of disaster resilience in Thailand, *Natural Hazards*, 79, 955-975, doi: 10.1007/s11069-015-1886-4, 2015.
- 30 Tapsell, S. M., Penning-Rowsell, E. C., Tunstall, S. M., and Wilson, T. L.: Vulnerability to flooding: health and social dimensions, *Philosophical Transactions of the Royal Society of London Series a-Mathematical Physical and Engineering Sciences*, 360, 1511-1525, doi: 10.1098/rsta.2002.1013, 2002.
- Terti, G., Ruin, I., Anquetin, S., and Gourley, J. J.: Dynamic vulnerability factors for impact-based flash flood prediction, *Natural Hazards*, 79, 1481-1497, doi: 10.1007/s11069-015-1910-8, 2015.
- 35 Thielen, A. H., Mariani, S., Longfield, S., and Vanneville, W.: Preface: Flood resilient communities - managing the consequences of flooding, *Natural Hazards and Earth System Sciences*, 14, 33-39, doi: 10.5194/nhess-14-33-2014, 2014.
- Turner, B. L., Kasperson, R. E., Matson, P. A., McCarthy, J. J., Corell, R. W., Christensen, L., Eckley, N., Kasperson, J. X., Luers, A., Martello, M. L., Polsky, C., Pulsipher, A., and Schiller, A.: A framework for vulnerability analysis in sustainability science, *Proceedings of the National Academy of Sciences of the United States of America*, 100, 8074-8079, doi: 10.1073/pnas.1231335100, 2003.
- 40 UNISDR: Sendai Framework for Disaster Risk Reduction 2015-2030, III UN World Conference on Disaster Risk Reduction, Sendai, Japan, 32, http://www.unisdr.org/files/43291_sendaiframeworkfordren.pdf, 2015.
- USACE: Geospatial Hydrologic Modeling Extension HEC-GeoHMS (Version 10.0), Hydrologic Engineering Center, Davis, Carolina, http://www.hec.usace.army.mil/software/hec-geohms/documentation/HEC-GeoHMS_Users_Manual_10.1.pdf, 2013.
- 45 Vermunt, J. K., and Magidson, J.: Latent class cluster analysis, in: *Applied latent class analysis*, edited by: Hagenaars, J. A., and McCutcheon, A. L., Cambridge University Press, New York, 89-106, doi: 10.1017/CBO9780511499531, 2002.

Weber, S., Sadoff, N., Zell, E., and de Sherbinin, A.: Policy-relevant indicators for mapping the vulnerability of urban populations to extreme heat events: A case study of Philadelphia, *Applied Geography*, 63, 231-243, doi: 10.1016/j.apgeog.2015.07.006, 2015.

5 Wilhelmi, O. V., and Morss, R. E.: Integrated analysis of societal vulnerability in an extreme precipitation event: A Fort Collins case study, *Environmental Science & Policy*, 26, 49-62, doi: 10.1016/j.envsci.2012.07.005, 2013.

Zelenakova, M., Ganova, L., Purcz, P., and Satrapa, L.: Methodology of flood risk assessment from flash floods based on hazard and vulnerability of the river basin, *Natural Hazards*, 79, 2055-2071, doi: 10.1007/s11069-015-1945-x, 2015.

Zhou, Y., Liu, Y. S., Wu, W. X., and Li, N.: Integrated risk assessment of multi-hazards in China, *Natural Hazards*, 78, 257-280, doi: 10.1007/s11069-015-1713-y, 2015.

10