

Reply to Anonymous Referee #1 comments and changes made

We are very grateful to the reviewer for the helpful comments on our manuscript. We have addressed all the comments made by the reviewer. To facilitate the review, we have modified the manuscript highlighting in yellow the changes carried out. We have taken advantage of this new opportunity to improve text, figures and tables as the reviewer has requested. In this regard, the concept of both vulnerability and all its components (i.e. sensitivity, exposure and resilience) have been clarified. As the reviewer recommended, we have created a new subsection under the section 2 (i.e. "2.2.2 Database generation"). Moreover, we have modified Figure 3 by adding the description of the variables in order to increase readers' friendliness as the reviewer suggested. To facilitate the understanding of the results, we have added a new column to Table 2, indicating the vulnerability component to which each vulnerability factor belongs. Conclusions have been amended to express clearer how the methodology proposed here constitutes an improvement on the state of the art and the extent to which the results may be included in flood risk management plans.

I have read the paper with great interest and the main objective addressed by the manuscript is framed appropriately to the scope of the journal, but there is some confusion regarding to the term vulnerability. Therefore, I think that the paper needs some revisions and I recommend to accept it only after these revisions.

Specific comments

Introduction.

- In general, vulnerability in the context of natural hazards is a broad term, which covers different dimensions from physical to social approaches. In this line, it is important from the authors to give a clear framework of the vulnerability concept used in this study. Try to explain better or make more explicit the links what do you deal with. For example, it is not clear to me what the authors understand as vulnerability, integrated vulnerability and the components influencing vulnerability. In this part and in order to avoid confusion, I would suggest the authors to clearly indicate what they define as vulnerability in the context of the existing frameworks as well as a clear definition of the terms exposure, sensitivity and resilience.

In spite of some confusion around the use of the vulnerability terminology, there is a certain consensus about what issues should be assessed to its characterization. The vulnerability analysis carried out in this paper has followed a hybrid approach (Eakin and Luers, 2006) between risk-hazard approaches, which considers that vulnerability depends on the biophysical risk factors and the potential loss of a particular exposed population (e.g. the hazards-of-place model of vulnerability; Cutter, 1996); and political economy/political ecology approaches, which emphasize the political, cultural and socioeconomic factors that explain the differential exposure, impacts and capacities to recover from an impact (e.g. the pressure and release model; Blaikie et al., 1994). Taking into account the key parameters for the vulnerability research that highlight the above-mentioned approaches, we understand that vulnerability depends on the social system's exposure and sensitivity to stress (exposure and sensitivity components of our Integrated Social Vulnerability Index, ISVI) as well as its capacity to absorb or cope with the effects of these stressors (resilience component of our ISVI) (Eakin and Luers, 2006; Adger, 2006; Birkmann et al., 2013). In this context, we define 'exposure' as the people and assets susceptible to be harmed; 'sensitivity' as the level to which people and assets can be damaged; and 'resilience' as the ability to absorb, cope with and recover from the effects of a disaster. Furthermore, the social dimension of vulnerability (i.e. social vulnerability) has been traditionally estimated through the construction of indexes, which are composed of several vulnerability factors (usually derived from a factor analysis or principal component analysis)(Cutter et al., 2003). Each vulnerability factor is in turn composed of several variables (variables considered as a means of explaining social vulnerability, such as age, gender, unemployment...). Traditional social vulnerability analysis usually

shows the results for each vulnerability factor and for the total social vulnerability (i.e. the combination of the above vulnerability factors), but they do not analyze the results by component. We have constructed a social vulnerability index using an integrating approach (i.e. integrating elements from risk-hazard and political economy/political ecology approaches)(Eakin and Luers, 2006), which has been called Integrated Social Vulnerability Index (ISVI). This enables us to find out the involvement of each vulnerability component (i.e. sensitivity, exposure and resilience) to the total vulnerability and their interactions (Frazier et al., 2014), which also facilitates the incorporation of the analysis results into the flood risk management plans, particularly at regional scales.

In view of the above, and in agreement with the reviewer, we have included in the text the theoretical concepts of:

- vulnerability assessment (page 2, lines 15-17).

"Many efforts were put in flood hazard analysis in past, but vulnerability assessment (**i.e. the analysis of the characteristics of a person or group and their situation that influence their capacity to anticipate, cope with, resist and recover from the impact of a natural hazard**) is still one of the biggest constraints in flood risk assessment to date".

- sensitivity, exposure and resilience, in which the integrated social vulnerability index is based on (page 3, lines 2-3).

"Less attention has been paid to integrated analysis of vulnerability components, which considers the differential influence of exposure (**i.e. people and assets susceptible to be harmed**), sensitivity (**i.e. the level to which people and assets can be damaged**) and resilience (**i.e. the ability to absorb, cope with and recover from the effects of a disaster**) on total vulnerability".

- integrated vulnerability (page 3, lines 16-18).

"This paper aims to calculate an integrated social vulnerability index (ISVI) to flash floods, **which considers separately the vulnerability components (i.e. exposure, sensitivity and resilience), analyzing the involvement of each of them in total vulnerability**".

Materials and Methods.

- The study area is well described. The methodological outline is well described and the method sounds scientifically correct (I am not an expert on statistics). I would suggest the authors to make figure 2 more simple by reducing some information that is presented on the text.

We have simplified the Figure 2 in order to make it clearer and easier to understand. Moreover, we have done a terminological change from 'municipalities' to 'urban areas', since municipalities is usually used to refer to administrative boundaries or local administration (i.e. the council). Thus, we have used the term 'urban areas' when we talk about the areas prone to flash flooding and 'municipalities' when we refer to the town halls. Moreover, we have added the green color in order to show clearer the final results.

- Moreover, it is not entire clear to me, why the authors used a low probability scenario and not scenarios with medium or high probability.

We have used the scenario of low or exceptional probability (500-year flood) because it is the flood hazard zone that is the most comprehensive representation of urban areas that could be affected by flash floods at regional scale, according to the European Flood Directive.

- In page 5/line 6, I would recommend the authors to create a new subchapter with the database generation.

Done (page 6, line 8). Thank you for the recommendation.

"2.2.2 Database generation"

- Moreover, I would suggest them to describe a bit more the data used and to give some more information about the surveys done (i.e. telephone calls and/or personal research).

We have extended the 'Database generation' subsection including more information about the variables included in the integrated social vulnerability analysis and how they were gathered (page 6, lines 12-14).

"However, the other 29 variables were requested from certain public organizations or councils by means of telephone calls, asking for information directly from the person in charge (e.g., dependency, development and infrastructures...) or generated through personal research estimating the variables through other non-specific sources of information (e.g., collective vulnerability, healthcare services...)".

- Additionally, on the construction of the Integrated Social Vulnerability Index (part 2.2.4), I would recommend the authors to describe a bit more the idea behind the equation's modification from the original one presented by Frazier et al. (2014).

Frazier et al. (2014) also used an integrated approach in the development of their Spatially Explicit Resilience-Vulnerability (SERV) model. However, the equations used in our ISVI represent an adaptation from the ones used in the above-mentioned article, since we have adapted the equations to our terminology (i.e. changing the term 'adaptive capacity' to 'resilience') and we have used a different method to weigh the vulnerability factors (i.e. using tolerance statistic instead of the percentage of explained variance). Therefore, we have replaced in the text the term 'modified' by 'adapted' (page 9, lines 8 and 11) and we have added a clarification in the text about this adaptation (page 9, lines 15-17).

"The index construction method implemented coincides with the same method developed by Frazier et al. (2014), although the tolerance statistic was used here as a weighting method".

Results.

- In general, I would suggest the authors to describe only their results to this part and to remove some parts describing methods (i.e. page 11/ lines 1-5 or page 12/lines 5-6) on the methodology part as well as some parts discussing their results (i.e. page 16/lines 11-13) to the discussion part.

We have removed the text related to the methodology and the discussion from the results section.

Moreover, we have moved the text of page 12 (lines 5-6) to the bottom of Figure 4 since it was describing this picture (page 13, bottom of Figure 4).

"Figure 4: Factor scores for identified vulnerability factors. For exposure and sensitivity factors, very high categories correspond to red colors while for resilience factors, very high categories correspond to blue colors".

- On figure 3, I would suggest to add the description of the variables to increase reader's friendliness.

Figure 3 have been modified including the description of the variables. Thank you for the suggestion.

- At the end, the conclusions presented are too general and do not reflect what exactly shown in this study. Conclusions based on the findings of the analysis presented would be more effective.

The conclusions have been reworded trying to make them more specific. They have been amended in order to express clearer how the methodology proposed here constitutes an improvement on the state of the art and the extent to which the results may be included in flood risk management plans and therefore improve flood risk management, which is the main objective of this social vulnerability analysis.

"A comprehensive characterization of social vulnerability is critical for an integrated FRM. The implementation of an HSA helps to overcome PCA sample size limitation, meaning an alternative methodology to the usually used to construct an ISVI in areas where available data is limited. The

results show the high spatial heterogeneity of the social vulnerability within the study region and the high variability in the ISVI scores regarding the interactions between vulnerability components, which 5 makes an integrated analysis more important. The identification of vulnerability patterns through the LCCA gives the sources of vulnerability in each urban area, which simplifies the spatial heterogeneity analysis of the social vulnerability and enables to know what aspects need to be improved in order to decrease sensitivity and exposure (e.g. urban areas that compose cluster 2 are mainly made up of elderly people that usually need an external aid to reach shelter, so they should develop very effective evacuation plans in order to coordinate the different competent authorities) and what aspects need to 10 be reinforced to increase resilience (e.g. a high percentage of dwellings of urban areas that compose cluster 2 are in poor condition, so they could reverse this situation providing financial aid or promoting a tax cut of dwellings in good condition in order to involve population). Thus, a better integration of the ISVI results into FRM plans and policies is made possible enabling to propose specific strategies of vulnerability reduction, increasing their efficiency".

CITED REFERENCES:

- Adger, W. N.: Vulnerability, *Global Environmental Change-Human and Policy Dimensions*, 16, 268-281, 10.1016/j.gloenvcha.2006.02.006, 2006.
- Birkmann, J., Cardona, O. D., Carreno, M. L., Barbat, A. H., Pelling, M., Schneiderbauer, S., Kienberger, S., Keiler, M., Alexander, D., Zeil, P., and Welle, T.: Framing vulnerability, risk and societal responses: the MOVE framework, *Natural Hazards*, 67, 193-211, <http://dx.doi.org/110.1007/s11069-11013-10558-11065>, 10.1007/s11069-013-0558-5, 2013.
- Blaikie, P., Cannon, T., Davis, I., and Wisner, B.: *At risk: natural hazards, people's vulnerability, and disasters*, Routledge, London, 304 pp., 1994.
- Cutter, S. L.: Vulnerability to environmental hazards, *Progress in Human Geography*, 20, 529-539, 10.1177/030913259602000407, 1996.
- Cutter, S. L., Boruff, B. J., and Shirley, W. L.: Social vulnerability to environmental hazards, *Social Science Quarterly*, 84, 242-261, <http://dx.doi.org/210.1111/1540-6237.8402002>, 10.1111/1540-6237.8402002, 2003.
- Eakin, H., and Luers, A. L.: Assessing the vulnerability of social-environmental systems, *Annual Review of Environment and Resources*, 31, 365-394, <http://dx.doi.org/310.1146/annurev.energy.1130.050504.144352>, 10.1146/annurev.energy.30.050504.144352, 2006.
- Frazier, T. G., Thompson, C. M., and Dezzani, R. J.: A framework for the development of the SERV model: A Spatially Explicit Resilience-Vulnerability model, *Applied Geography*, 51, 158-172, <http://dx.doi.org/110.1016/j.apgeog.2014.1004.1004>, 10.1016/j.apgeog.2014.04.004, 2014.

Reply to Anonymous Referee #2 comments and changes made

We are very grateful to the reviewer for the helpful comments on our manuscript. We have addressed all the comments made by the reviewer. To facilitate the review, we have modified the manuscript highlighting in yellow the changes carried out. We have taken advantage of this new opportunity to improve text and figures as the reviewer has requested. In this regard, the inclusion of exposure in the Integrated Social Vulnerability Index has been clarified, adding a new reference for this purpose. We have simplified the Figure 2 in order to improve its understanding. Moreover, we have explained better the concept of 'optimum number of clusters' at the results section, extending the information with regard to the BIC and the CAIC statistics. We have also modified the text of the section 4.3 ('Policy implications'), giving some practical examples of specific mitigation measures that can be suggested for each cluster of urban areas. Finally, conclusions have been amended to express clearer how the methodology proposed here constitutes an improvement on the state of the art and the extent to which the results may be included in flood risk management plans, as both reviewers have recommended.

First of all, I very much enjoyed reading the manuscript. I have, however, a few comments to improve the manuscript. Please find them below.

- Abstract, line 16: 'it has not yet provided'. Please rephrase this a bit, the sentence is unclear.

We have rephrased the sentence. As the reviewer pointed out, the sentence was badly phrased (page 1, lines 16-18).

"As far as we know, a methodological approach to construct the ISVI in urban areas of Castilla y León (northern central Spain, 94,223 km², 2,478,376 inhabitants) prone to flash flooding has not yet been provided".

- some additional explanation is required on the inclusion of exposure in the social vulnerability index. In the traditional risk framework, exposure and vulnerability are two different components of the framework. As many researchers from the risk field read this journal, it should be specifically emphasized that including exposure is common practice in the social vulnerability field, even though this may contradict to the definition of risk and vulnerability which is more commonly used in the disaster risk community. This is important for the interpretation of the results.

As the reviewer point out, exposure is commonly included in the social vulnerability analysis. Although exposure and vulnerability are two different components of risk, currently exposure is included in the social vulnerability assessments in order to provide a holistic characterization of vulnerability, since it is not possible to talk about potential for loss (i.e. vulnerability) in the absence of exposure (Frazier et al., 2014). In the same way, resilience is also included in social vulnerability analysis, since the potential for loss also depends on the ability to absorb, cope with and recover from the effects of a disaster. Thus, a comprehensive social vulnerability assessment should include the social system's exposure and sensitivity to stress (exposure and sensitivity components of our Integrated Social Vulnerability Index, ISVI) as well as its capacity to absorb or cope with the effects of these stressors (resilience component of our ISVI) (Eakin and Luers, 2006). Therefore, we have explained that the inclusion of exposure in the social vulnerability analysis is a common practice (page 3, lines 7-9). We have also included a new reference in order to strength this idea.

"Although exposure and vulnerability are assumed to be two different concepts in the traditional risk framework, currently the inclusion of exposure as a factor to be considered is a common practice to assess social vulnerability".

- I have a few questions and a suggestion regarding Figure 2: We have simplified the Figure 2 in order to make it clearer and easier to understand. Moreover, we have done a terminological change

from 'municipalities' to 'urban areas', since municipalities is usually used to refer to administrative boundaries or local administration (i.e. the council). Thus, we have used the term 'urban areas' when we talk about the areas prone to flash flooding and 'municipalities' when we refer to the town halls.

- why is there an arrow going from Flash flood low probability municipalities to socioeconomic variables? Because the flash flood box is blue, it now seems like a hazard variable is added to the socioeconomic variables. This is, however, not the case (and should not be the case either). We wanted to show with this arrow that socio-economic variables had only been gathered to those urban areas that met the defined requirements, which were then named as 'Flash flood low probability municipalities'. In order to facilitate the understanding of this part of the Figure 2, we have modified the color of this box from a blue plain to a gradient blue-beige color, indicating that the 'Flash flood low probability municipalities' box is the beginning of the second part of the figure (beige boxes).
- why are sensitivity and exposure 'clustered' and is resilience not in this cluster? All vulnerability components (exposure, sensitivity and resilience) were taken into account in the Latent Class Cluster Analysis (LCCA), using as input data the factor scores of the urban areas of interest. The minus sign which is placed on the arrow that goes from the box 'Factor scores' to 'Resilience' box indicates the sign of the component when the Integrated Social Vulnerability Index (ISVI) was calculated, and not that Resilience was not considered in the LCCA. Traditionally, factors that express sensitivity or exposure are considered as positive values in the ISVI (see the plus sign that is placed on the arrow that go from the box 'Factor scores' to 'Sensitivity' and 'Exposure' boxes); while factors that state resilience are considered as negative values, as has been done here.
- Perhaps add a third color that specifies the (final) results. This would make it more clear why some arrows exist in the framework (for instance the arrow from factor scores to clusters of municipalities). Done. Thank you for the recommendation.

- Section 2.2.2: I do not fully understand the use of the Euclidian distance method. If I do understand it correctly, the sum of the differences between variable values is considered to be the distance? So distance is not spatial? I think it would be good to explain this a bit more clearly, as some parts of the paper are spatial (the clusters of municipalities for instance). This causes (at least for me) some confusion.

We have changed the term 'distance' by 'similarity' in the text in order to clarify that we were not talking about spatial distance (page 8, line 9). From a statistical point of view, distance measures are a type of similarity measure, so it is correct to use the term 'similarity'. We have used the Euclidean distance to evaluate how similar to each other the variables were, as is explained by Euclidean distance definition (page 8, lines 9-10). The greater the distance among variables are, the less similar the variables are. Hierarchical Segmentation Analysis (HSA) groups variables according to their similarity rather than the distance.

"Once the variables were standardized (Cutter et al., 2003), the squared Euclidean distance was used as a similarity measure, i.e., the square of the square root of the sum of the differences between variable values".

- Captions of Figure 4 and Figure 5 could be a bit longer. Figure + figure caption should be self-explanatory.

We understand the comment about captions of Figure 4 and Figure 5, but we decided to shorten them in order to have a more balanced length of the text of this section.

- Figure 3 is perhaps not required, as it shows roughly the same as table 2? Perhaps move to appendix, as table 2 shows everything we would like to know (the variable clusters and the factor names)

Figure 3 and Table 2 do not show the same information. Figure 3 corresponds to HSA output while Table 2 corresponds to the Factor Analysis (FA) output, which includes factor loadings that are necessary to construct the ISVI. HSA helps to overcome the Principal Components Analysis (PCA) sample size limitations, so we think that including the HSA output (i.e. the dendrogram) into the results section of this paper is an interesting approach.

- Section 3.2: I am a bit puzzled with the notion of 'optimum number of clusters'. What does an optimum amount of clusters mean? Ok the statistics say so, but as a practitioner, what would it matter if you would have four clusters? How would this change the interpretation of the results?

BIC and CAIC are statistics that enable to establish a number of clusters, which can be used in flood management. We used the BIC and the CAIC criteria in order to select the more parsimonious number of clusters (i.e. the number of clusters that provides as much information as possible taking into account the number of parameters to estimate). The more information is explained by the model, the greater the number of estimated parameters will be. The above is shown in Table 3 (Page 15). The minimum values of the BIC and the CAIC statistics are reached with a model of 3 clusters, and their values increase again in the estimations that consider four and five clusters. This means that the number of parameters to estimate by the model (see Table 3, 'Number of parameters' column) are too high in comparison to the obtained increase of explained information ('Log-likelihood(LL)' column). From a practical point of view, the above means that an increase in the number of clusters from 3 to 4 or 5 would split a fairly homogeneous cluster of urban areas into several subgroups which would not be very different from each other. Therefore, a greater level of disaggregation would not help to improve the implementation of different flood risk mitigation measures for each cluster of urban areas.

Therefore, we have extended the information about the BIC and the CAIC criteria in the text (page 15, lines 2-3).

"The BIC and CAIC statistics were used in order to select the more parsimonious number of clusters (i.e. the number that provides as much information as possible taking into account the number of parameters to estimate)".

- Section 4.1: I would suggest to move parts of this to the method section. Most parts of this section are regarding the interpretation of the results. It is better to make this clear before the results section, instead of afterwards. A discussion after the results, weakens, in my opinion, the results.

We have removed some parts of the text from section 4.1 instead of moving the text because the text of the methodology section is already very long and it contains all the ideas that the authors considered important.

- Section 4.3: I suppose the clustering of municipalities is interesting from a policy making perspective. It would be good to link the clustering to this section. How can it improve policy making if we can identify similar municipalities?

We have extended the text of the 'policy implications' section trying to emphasize the practical utility from a policy making perspective of the Latent Class Cluster Analysis (LCCA). For this purpose, we have included practical examples of specific mitigation measures that could be proposed for each cluster of urban areas identified by the LCCA (page 20, lines 16-26).

"The identification of social vulnerability patterns help to identify the most suitable mitigation measures for each cluster of urban areas identified by LCCA, in addition to prioritize the available resources. For instance, mitigation measures for those urban areas included in cluster 1 should be targeted towards improving the physical resilience (e.g. raising the first-floor elevation above ground level) and helping population financially with the implementation of mitigation measures (e.g. providing financial aid to those dwellings located at flood-prone areas). On the other hand, the population that live in those urban areas included in cluster 2 are highly dependent on external assistance due to high rates of ageing population, so emergency services should have adequately characterized the different evacuation routes (e.g. promoting the design of evacuation routes and the construction of shelters near those urban areas). Finally, mitigation measures for urban areas included in cluster 3 should be aimed at the collective facilities (e.g. practicing of flood emergency drills) and to encourage the implementation of individual mitigation strategies (e.g. through a financial incentive system, such as the repayment of part of the money spent at municipal taxes)".

- Please make the conclusions a bit more specific for this paper. What can we really learn from this paper, especially from a policy making perspective. What does this paper add, besides being the first study on flash floods? A few lines on the conclusions for the study region (specific patterns identified) would be interesting as well.

The conclusions have been reworded trying to make them more specific. They have been amended in order to express clearer how the methodology proposed here constitutes an improvement on the state of the art and the extent to which the results may be included in flood risk management plans and therefore improve flood risk management, which is the main objective of this social vulnerability analysis.

A comprehensive characterization of social vulnerability is critical for an integrated FRM. The implementation of an HSA helps to overcome PCA sample size limitation, meaning an alternative methodology to the usually used to construct an ISVI in areas where available data is limited. The results show the high spatial heterogeneity of the social vulnerability within the study region and the high variability in the ISVI scores regarding the interactions between vulnerability components, which make an integrated analysis more important. The identification of vulnerability patterns through the LCCA gives the sources of vulnerability in each urban area, which simplifies the spatial heterogeneity analysis of the social vulnerability and enables to know what aspects need to be improved in order to decrease sensitivity and exposure and what aspects need to be reinforced to increase resilience. Thus, a better integration of the ISVI results into FRM plans and policies is made possible enabling to propose specific strategies of vulnerability reduction, increasing their efficiency.

CITED REFERENCES:

Eakin, H., and Luers, A. L.: Assessing the vulnerability of social-environmental systems, *Annual Review of Environment and Resources*, 31, 365-394, <http://dx.doi.org/310.1146/annurev.energy.1130.050504.144352>, 10.1146/annurev.energy.30.050504.144352, 2006.

Frazier, T. G., Thompson, C. M., and Dezzani, R. J.: A framework for the development of the SERV model: A Spatially Explicit Resilience-Vulnerability model, *Applied Geography*, 51, 158-172, <http://dx.doi.org/110.1016/j.apgeog.2014.1004.1004>, 10.1016/j.apgeog.2014.04.004, 2014.

Construction of an Integrated Social Vulnerability Index in urban areas prone to flash flooding

Estefania Aroca-Jimenez¹, Jose Maria Bodoque¹, Juan Antonio Garcia², Andres Diez-Herrero³

¹Department of Mining and Geological Engineering, University of Castilla-La Mancha, Avd. Carlos III, Toledo 45071, Spain

²Department of Business Administration, University of Castilla-La Mancha, Avd. Real Fabrica de Sedas, Talavera de la Reina 45600, Spain

³Geological Hazards Division, Geological Survey of Spain, 23 Calle Rio Rosas, Madrid 28003, Spain

Correspondence to: Estefania Aroca-Jimenez (estefaniacarmen.aroca@alu.uclm.es)

Abstract. Flash floods are considered to be one of the natural hazards with the greatest capacity to generate risk. Therefore, a change in traditional flood risk management (FRM) is necessary towards an integrated approach, which requires a comprehensive assessment of the social risk component. In this regard, integrated social vulnerability (ISV) gives us the spatial distribution, contribution and combined effect of exposure, sensitivity and resilience to the total vulnerability, although these components are often disregarded. ISV is characterized by the demographic and socioeconomic characteristics that condition a population's capacity to cope with, resist and recover from risk, and it can be derived from assessing the Integrated Social Vulnerability Index (ISVI). As far as we know, a methodological approach to construct the ISVI in urban areas of Castilla y León (northern central Spain, 94,223 km², 2,478,376 inhabitants) prone to flash flooding has not yet been provided. A hierarchical segmentation analysis (HSA) was performed prior to the principal components analysis (PCA), which helped to overcome sample size limitation inherent to PCA. ISVI was obtained from weighting vulnerability factors based on the tolerance statistic. Additionally, latent class cluster analysis (LCCA) was accomplished aiming to identify vulnerability spatial patterns within the study area. Our results show that the ISVI has high spatial variability. Moreover, the LCCA allowed us to identify the source of vulnerability in each urban area cluster. These findings enable a tailored design of FRM strategies, which intends to increase the efficiency of plans and policies, helping reduce implementation costs for mitigation measures.

1 Introduction

Flash floods are highly spatio-temporal localized flood events usually occurring in small, steep basins. They are caused by a sudden increase of the stream flow, generally due to spatially concentrated heavy rainfall and characterized by reaching a high peak flow in a short period of time (i.e., generally within six hours of rainfall) (Creutin et al., 2009; Gaume et al., 2009; Marchi et al., 2010; Liu et al., 2011; Borga, 2013; Wilhelmi and Morss, 2013; Bodoque et al., 2015; Terti et al., 2015). Its short duration, which limits or even voids any warning time, means that flash floods are considered to be one of the most

destructive hazards with the greatest capacity to generate risk, either in terms of socioeconomic impact or particularly concerning the number of casualties on a global scale (Marchi et al., 2010; Borga, 2013; Terti et al., 2015). In fact, according to Barredo (2007), 40% of flood-related casualties in Europe between 1950 and 2006 were caused by flash floods.

The growth of exposed population, the allocation of economical activities to flood-prone areas and the rise of extraordinary event frequency over the last few decades (Huntington, 2006; Frigerio et al., 2016), have resulted in an increase of flash flood-related casualties and economic losses (Llasat et al., 2008; Marchi et al., 2010). The above highlight the need to make people aware of and prepared to live with risk (Birkmann, 2013). In this regard, the United Nations has invested a great deal of effort in promoting awareness on the importance of disaster reduction. The resulting initiative started in 1990 with the International Decade for Natural Disaster Reduction (IDNDR). The experience gained during this decade set foundations for the International Strategy for Disaster Reduction, giving rise different frameworks, where the Sendai Framework for Disaster Risk Reduction 2015-2030 is the most topical (UNISDR, 2015). This new approach has enabled a change in FRM from an engineered-based perspective, that has proven not to respond effectively (Birkmann, 2013; Cutter et al., 2013; Koks et al., 2015) to a disaster-resilient perspective, highlighting the need for building resilient communities through integrating vulnerability reduction approaches into risk reduction policies (Cutter et al., 2008; Birkmann et al., 2013; UNISDR, 2015).

Many efforts were put in flood hazard analysis in past, but vulnerability assessment (i.e. the analysis of the characteristics of a person or group and their situation that influences their capacity to anticipate, cope with, resist and recover from the impact of a natural hazard) is still one of the biggest constraints in flood risk assessment to date (Mechler et al., 2014; Koks et al., 2015). A comprehensive vulnerability assessment should take into account any characteristics that increase susceptibility as well as any features that strengthen the population's ability to deal with extreme events (i.e., resilience) (Birkmann, 2013; Thieken et al., 2014). Numerous papers have analyzed the physical vulnerability component (Koks et al., 2014; Ocio et al., 2016). However, social aspects of vulnerability have often been neglected (Cutter et al., 2003; Hummell et al., 2016), mainly due to the difficulty of quantifying variables that are inherently qualitative (Frazier et al., 2014). Social vulnerability tries to explain how a certain natural hazard produces an unequal impact on exposed population (Cutter et al., 2003; Nelson et al., 2015), and it can be characterized by any socioeconomic and demographic variables that influence society's preparedness, response and recovery (Birkmann, 2013; Cutter et al., 2013; Terti et al., 2015).

Social vulnerability has been assessed in different contexts (e.g., global environmental change, natural hazards). However, the number of works is reduced if we only focus on flood risk context (Tapsell et al., 2002; Burton and Cutter, 2008; Fekete, 2010; Mollah, 2016), and only very few studies are related to flash floods (Balteanu et al., 2015; Karagiorgos et al., 2016). Overall, social vulnerability analysis assesses vulnerability (Tapsell et al., 2002; Cutter et al., 2003; Nelson et al., 2015) and resilience separately (Cutter et al., 2008; Cutter et al., 2010; Siebeneck et al., 2015). Usually, the approach has been based on calculating composite indices from sociodemographic and economic characteristics. Reductionist statistical techniques (i.e., generally factor analysis, FA, and principal components analysis, PCA) have been used for this purpose (Clark et al., 1998; Cutter et al., 2003; Dwyer et al., 2004; Fuessel, 2007; Grosso et al., 2015; Hummell et al., 2016; Rogelis et al., 2016).

Less attention has been paid to integrated analysis of vulnerability components, which considers the differential influence of exposure (i.e. people and assets susceptible to be harmed), sensitivity (i.e. the level to which people and assets can be damaged) and resilience (i.e. the ability to absorb, cope with and recover from the effects of a disaster) on total vulnerability (Frazier et al., 2014; Pandey and Bardsley, 2015; Weber et al., 2015). The above helps to identify which characteristics contribute to vulnerability increases or decreases and where they are spatially represented. Accordingly, this approach provides a much more holistic assessment of vulnerability, since it models the combined effects of vulnerability components (Fuessel, 2007; Frazier et al., 2014). Although exposure and vulnerability are assumed to be two different concepts in the traditional risk framework, currently the inclusion of exposure as a factor to be considered is a common practice to assess social vulnerability (Turner et al., 2003; Adger et al., 2004; Frazier et al., 2014). Moreover, it is worth mentioning that flash floods are produced in mountainous areas where data availability may be limited. Very few works take into account this constraint which, in some cases, is addressed by aggregating the variables being considered in order to obtain the vulnerability index (Balteanu et al., 2015). Determination of the vulnerability index requires vulnerability factor weighting. To this end, equal weights have usually been assigned to all factors (Cutter et al., 2003; Cutter et al., 2010), which may not lead to a realistic result (Frazier et al., 2014). Sometimes, differential weights according to expert judgments have been assumed (Zelenakova et al., 2015), which could be a limitation itself as experts' judgment may differ for the same issue (Asadzadeh et al., 2015). It is also worth mentioning statistical methods, such as correlation-based PCA (Mollah, 2016), which are being increasingly used (Asadzadeh et al., 2015).

This paper aims to calculate an integrated social vulnerability index (ISVI) to flash floods, which considers separately the vulnerability components (i.e. exposure, sensitivity and resilience), analyzing the involvement of each of them in total vulnerability. To address this objective, a set of variables were statistically analyzed firstly through hierarchical segmentation analysis (HSA) and secondly performing a PCA. The approach being implemented constitutes an alternative methodology to what is typically used in a social vulnerability assessment, enabling us to overcome the insufficient data availability frequently existing in many mountainous areas. Tolerance statistic was used as a variable weighting method. Additionally, latent class cluster analysis (LCCA) was performed in order to identify social vulnerability profiles within the study region.

2 Materials and Methods

2.1 Study area

The methodology proposed herein was implemented in the region of Castilla y León, which occupies almost all of central, northern Spain (Iberian Peninsula; Fig. 1). This region has a surface area of 94,230 km², making it the largest region not only in Spain but also in the European Union, exceeding the area of seventeen out of twenty-eight member states (e.g., Portugal, Austria or Belgium). Its relief is mainly composed of a large plateau between 700 and 1,100 m above sea level, surrounded by large mountain systems whose peaks can reach heights of up to 2,600 m. The climate is a continental variation of the

Mediterranean type, with hot and dry Summers, but cold and relative dry Winters. Average annual rainfall ranges from 300 to 600 mm and primarily falls in Spring and Autumn, although more than 1,800 mm is not unusual in certain mountainous areas. High slopes, which limit the development of vegetation, and spatially concentrated heavy rainfall in certain mountainous areas, propitiate the triggering of flash floods. With regard to demographics, Castilla y León has a population of nearly 2.5 million, 5.5 % corresponding to foreign population. Population densities range from 9 to 65 inhabitants per km², giving a mean population density of 26 for the region, far lower than the mean for Spain, 92. The region is divided into 2,248 urban areas, with major differences between urban and rural urban areas. From the total number of urban areas, 94% have less than 2,000 inhabitants, making up 26 % of the region's population. In addition, it is worth mentioning that the region demonstrates an ageing population, with an ageing index close to 2 (i.e., there are two people age 65 or older for each person below age 15). However, the ageing index is higher than 5 for urban areas with less than 2,000 inhabitants.

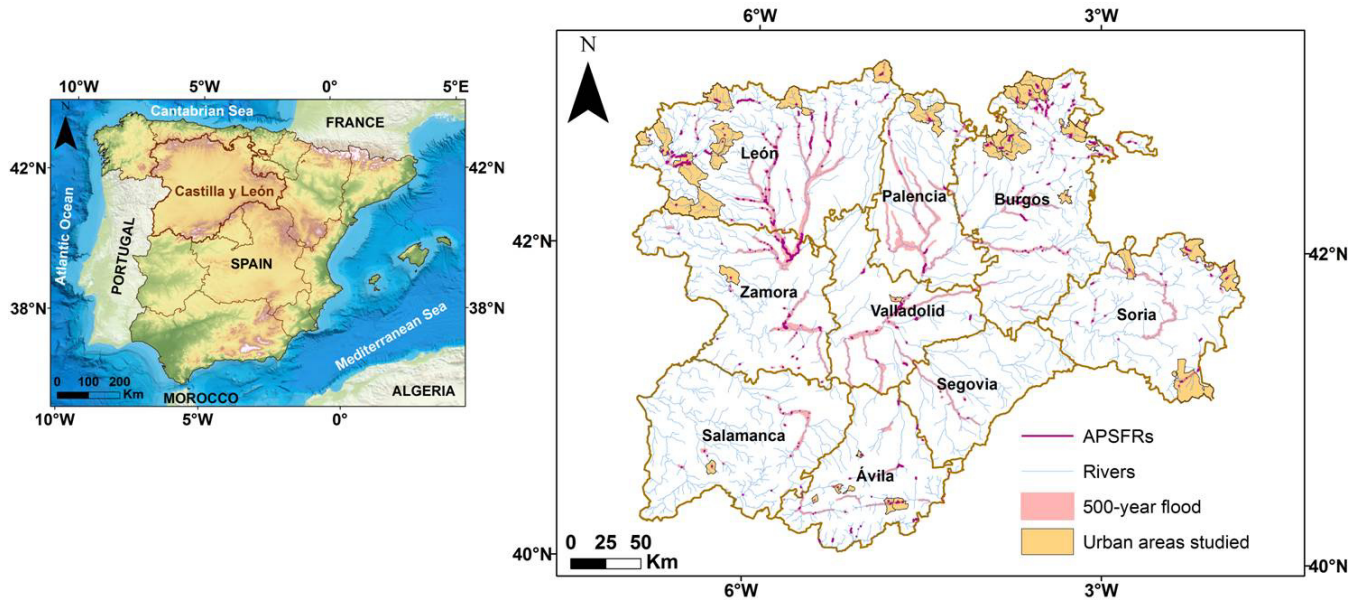
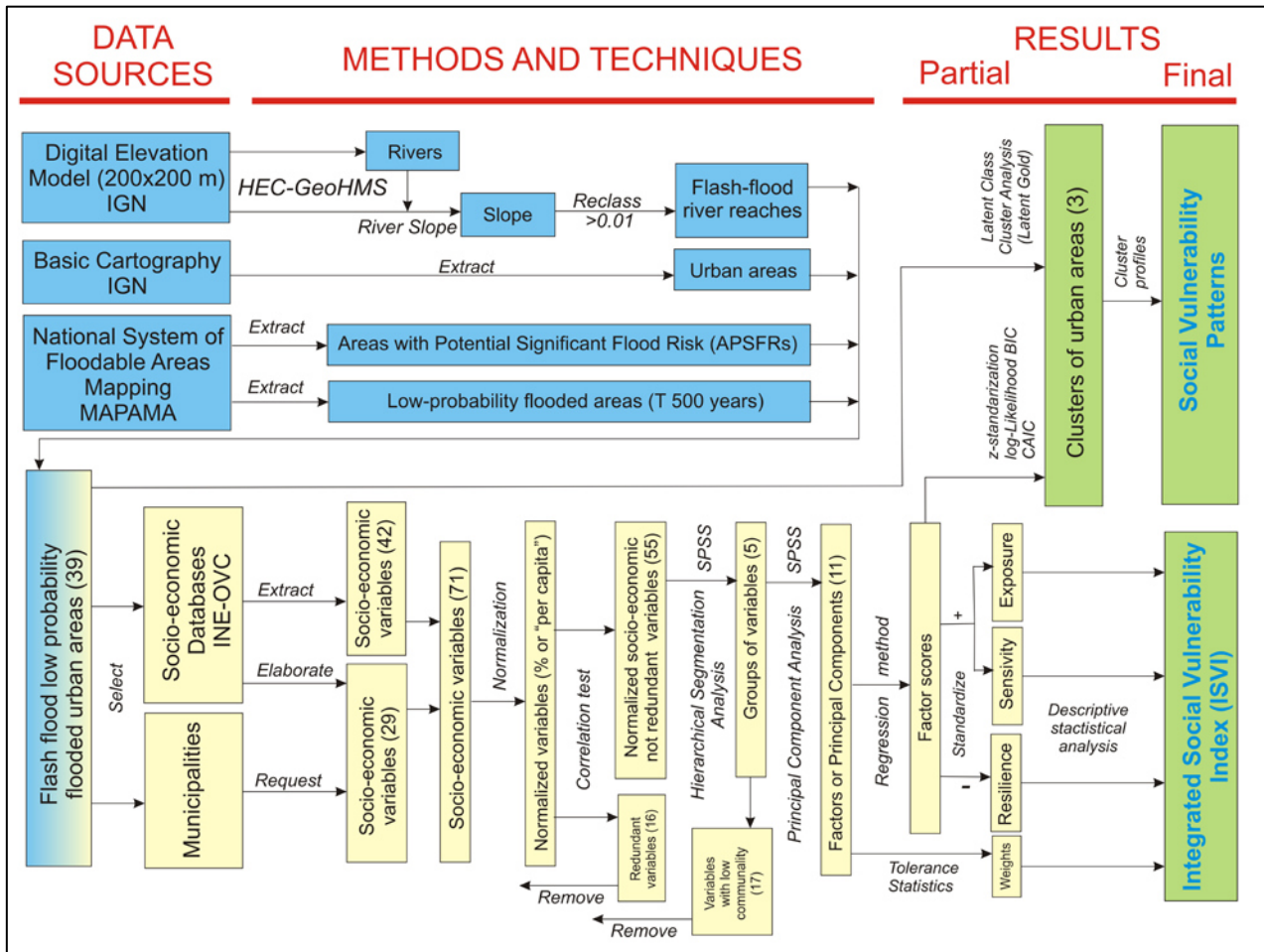


Figure 1: Location of the region of Castilla y León.

2.2 Methodological outline

First of all, those urban areas of the study region prone to flash flooding were distinguished (see Sect. 2.2.1). Next, a database of sociodemographic and socioeconomic variables was constructed for each of the urban areas considered (see Sect. 2.2.2). It was not possible to start performing a PCA as it is usual in the literature to define the ISVI (Fekete, 2010; Frazier et al., 2014; Hummell et al., 2016), since the number of variables initially considered (i.e. 71 variables) outnumbered urban areas of interest (i.e. 39 urban areas) (Sarstedt and Mooi, 2014). Instead, a HSA was previously applied with the aim of dividing the database into small subsets of variables (see Sect. 2.2.3). This allowed us to perform a PCA in each one of them

enabling the extraction of the different vulnerability factors (see Sect. 2.2.4), from which the ISVI can be composed (see Sect. 2.2.5). In addition, vulnerability factors were used to identify social vulnerability patterns within the study area through a LCCA (see Sect. 2.2.6) (Fig. 2).



5 **Figure 2:** Methodological outline containing the different followed steps in the construction of the ISVI and the social vulnerability patterns.

2.2.1 Identification of urban areas prone to flash flooding

Flash floods are produced in very specific areas, so it was necessary to specify the urban areas prone to this type of events. To do this, a number of simple but robust requirements were considered. The first requisite consisted of finding river reaches whose longitudinal slope crossing a given urban area was higher than 0.01 m m^{-1} (Bodoque et al., 2015). To apply this criterion, a digital terrain model with a cell size of 200 m was used. It was provided by the Spanish National Geographic Institute (IGN) and was used as input data for the Geospatial Hydrologic Modelling extension (HEC-GeoHMS 10.0)

(USACE, 2013), from which river longitudinal slopes were calculated. Secondly, and taking into account the river reaches selected in the previous step, we located the urban environments defined by Basin Water Authority as Areas with Potential Significant Flood Risk (APSFs) (Caballero et al., 2011) and with low or exceptional probability (i.e., 500-year flood). They were defined based on the preliminary flood risk assessment carried out by competent water, coasts and civil protection authorities, as stated by Directive 2007/60/CE on the assessment and management of flood risks. These areas were provided by the Spanish Ministry of Agriculture and Fisheries, Food and Environment (MAPAMA). Subsequently, the aforementioned flooded areas were crossed with the river reaches selected according to the first criterion in order to identify the urban areas of interest, resulting in a total of 39.

2.2.2 Database generation

Based on existing literature, a set of 71 variables was initially characterized for each of the 39 urban areas identified above. A total of 42 sociodemographic and socioeconomic variables were extracted from state, regional or local databases (e.g., population, education, buildings...). However, the other 29 variables were requested from certain public organizations or councils by means of telephone calls, asking for information directly from the person in charge (e.g., dependency, development and infrastructures...) or generated through personal research estimating the variables through other non-specific sources of information (e.g., collective vulnerability, healthcare services...). Variables were then normalized to a percentage or per capita (Hummell et al., 2016). Redundant variables were removed after conducting a correlation test (Cutter et al., 2003). Specifically, those variables with a correlation coefficient above 0.9 were not considered. Therefore, 16 variables were eliminated from the database, continuing the methodological approach with the other 55 variables (Table 1). These were classified in 8 thematic information blocks: *i*) population (11 variables related to demography); *ii*) dependency (4 variables linked to elderly people); *iii*) education (2 variables associated with the level of educational attainment); *iv*) employment situation (5 variables related to unemployment status); *v*) healthcare services (8 variables linked to medical system characteristics); *vi*) development and infrastructures (10 variables associated with the economic potential of the region and its facilities); *vii*) buildings (13 variables related to construction features) and *viii*) collective vulnerability (2 variables linked to the availability of infrastructures to evacuate population).

Table 1: Set of variables used in the exploratory analysis of social vulnerability dimensions.

Category	Variable	Description	Data source
Population	TPOP	Total population	Spanish Statistics Institute (2014)
	FOREIG	Foreigners	Spanish Statistics Institute (2014)
	POP0	Inhabitants aged 0-4	Spanish Statistics Institute (2014)
	POP5	Inhabitants aged 5-14	Spanish Statistics Institute (2014)
	POP15	Inhabitants aged 15-64	Spanish Statistics Institute (2014)
	POP65	Inhabitants aged 65 or older	Spanish Statistics Institute (2014)
	PROJ_0	Population projection aged 0-4 for 2025	Spanish Statistics Institute (2014)
	PROJ_5	Population projection aged 5-14 for 2025	Spanish Statistics Institute (2014)
	PROJ_15	Population projection aged 15-64 for 2025	Spanish Statistics Institute (2014)
	PROJ_65	Population projection aged 65 or older for 2025	Spanish Statistics Institute (2014)
NRESID	New residents	Spanish Statistics Institute (2014)	
Dependency	DISABLED	Disabled people	Institute of Social Services and the Elderly (2013)
	DEPRAT_M	Dependency rates: males	Spanish Statistics Institute (2014)
	DEPRAT_F	Dependency rates: females	Spanish Statistics Institute (2014)
	HOUSE_OLD	Households where people aged 65 or older live	Population and Housing Census (2011)
Education	ILLITER	Illiterate people	Population and Housing Census (2011)
	LITER	Literate people	Population and Housing Census (2011)
Employment situation	LT_UNEMP	Long-term unemployed people	Regional Employment Observatory (2015)
	UN_RAT	Unemployment rates	Spanish Public Employment Service (2014)
	HS_OEMP	Households where any employed people live	Population and Housing Census (2011)
	HS_OUNEMP	Households where any unemployed people live	Population and Housing Census (2011)
	WORK_M	People that work within urban area of residence	Population and Housing Census (2011)
Healthcare services	HEALTH_C	Health centres	Spanish Ministry of Health, Social Services and Equality (2015)
	DIST_HC	Distance to the nearest health centre	Personal research (2015)
	TIME_HC	Travel time to the nearest health centre	Personal research (2015)
	TYPE_H	Type of healthcare (continuity)	Personal research (2015)
	H_BEDS	Hospital beds	Regional Statistics Information System (2014)
	DIST_H	Distance to the nearest hospital	Personal research (2015)
	TIME_H	Travel time to the nearest hospital	Personal research (2015)
MED_ST	Medical staff	Personal research (based on council information, 2015)	
Development and infrastructures	KINDERG	Kindergartens	Spanish Ministry of Education, Culture and Sport (2015)
	ELEM_SCH	Elementary schools	Spanish Ministry of Education, Culture and Sport (2015)
	SEC_SCH	Secondary schools	Spanish Ministry of Education, Culture and Sport (2015)
	RET_HOME	Retirement homes	Spanish Ministry of Health, Social Services and Equality (2009)
	TOUR_AC	Tourist accommodation	Regional Statistics Information System (2014)
	CAMPsites	Campsites	Personal research (2015)
	DEBTS	Municipal debt per inhabitant	Spanish Ministry of Finance and Public Administrations (2014)
	PC_INC	Per capita income	Spanish Institute for Fiscal Studies (2011)
	FIX_INV	Fixed investments per inhabitant	Spanish Ministry of Finance and Public Administrations (2014)
BUDGET	Municipal available budget per capita	Spanish Ministry of Finance and Public Administrations (2014)	
Buildings	BUILTAREA	Built-up area per area without buildings	Spanish cadastre (2015)
	ABOVE_GR	Above ground built-up area	Spanish cadastre (2015)
	UNDER_GR	Underground built-up area	Spanish cadastre (2015)
	POP_SETL	Population per settlement area	Spanish cadastre (2015)
	CON_AGE	Mean age of household construction	Spanish cadastre (2015)
	PERM_H	Permanent households	Population and Housing Census (2011)
	VACANT_H	Vacant households	Population and Housing Census (2011)
	NONACCES	Non-accessible households	Population and Housing Census (2011)
	POORCOND	Households in poor condition	Population and Housing Census (2011)
	GDCOND	Households in good condition	Population and Housing Census (2011)
	ST_AGBG	Households with 1 storey above ground level and/or another storey below ground level	Population and Housing Census (2011)
	ST_AGL	Households with 2 or more storeys above ground level	Population and Housing Census (2011)
	USE_AR	Households' mean useful area	Population and Housing Census (2011)

Collective vulnerability	INTERS EVACUAT	Potential intersections between evacuation routes and rivers Areas suited to population evacuation	Personal research (2015) Personal research (2015)
--------------------------	-------------------	---	--

2.2.3 Exploring the dimensions of social vulnerability

Variables being considered were grouped together using the HSA application, using SPSS (IBM-SPSS v.19) statistical software. It is a multivariate statistical technique for automatic data classification attempting to divide an initial set of variables into different groups. This division is based on minimizing the distance among variables in the same group and maximizing the distance among variables in different groups (Sarstedt and Mooi, 2014). The division of variables into groups follows a hierarchical process. Initially, as many groups as variables were considered. Subsequently, successive iterations of hierarchical algorithms enabled variables to join up in larger groups. Once the variables were standardized (Cutter et al., 2003), the squared Euclidean distance was used as a similarity measure, i.e., the square of the square root of the sum of the differences between variable values. In addition, Ward's method was used as a grouping method. It seeks the least possible variability within each group (i.e., the minimum variance), as an associative hierarchical algorithm which has been demonstrated to be one of the most effective (Pérez, 2004), especially when the sample size is small (Martín et al., 2015). In order to determine the number of groups, not only was the distance at which groups were differentiated into the graphical output of the HSA (i.e., the dendrogram) taken into account but also that variables contained in them were consistent and homogeneous in number. Finally, distinguishing groups of variables allowed us to conduct a principal components analysis in each of them.

2.2.4 Identification of vulnerability factors

SPSS (IBM-SPSS v.19) was used to implement Principal Component Analysis (PCA) in each group differentiated by the HSA. It aimed to reduce the number of variables into latent variables which are not directly observable, so-called principal components or factors, which are a linear combination of primitive variables (Sarstedt and Mooi, 2014). The Kaiser-Meyer-Olkin (KMO) statistic and Barlett's test of sphericity were estimated in order to evaluate the suitability of performing PCA in variables being considered. For each group, all the variables were initially considered in the factor extraction process. Variables with a low communality (values below 0.5) were subsequently removed and the factor extraction process was repeated until all variables had communality values above 0.5. Communality indicates how much variance of each variable can be reproduced by means of factor extraction. In cases in which a group set out more than one factor, they were separated and a PCA was performed with each one of them individually. Factor loadings represent the correlations between the factors and variables, which helped us to name each factor. Finally, factor scores were produced using the regression method, which is the most used (Sarstedt and Mooi, 2014). Factor scores embody a linear combination of the primary variables. Thus, each urban area was composed of as many factor scores as social vulnerability factors identified.

2.2.5 Construction of the Integrated Social Vulnerability Index (ISVI)

Factor scores for each vulnerability factor were saved as new attributes in the data file, which allowed us to use them for index construction. Factor scores were standardized and taking positive or negative values depending on whether an urban area exhibits the characteristic described by a certain factor above or below average (Sarstedt and Mooi, 2014).

5 Traditionally, factors that express sensitivity or exposure are considered as positive values in the ISVI; while factors that state resilience are considered as negative values (Cutter et al., 2013; Frazier et al., 2014; Hummell et al., 2016). In order to maintain this criterion, the sign of some factor scores were reversed (i.e., multiplied by -1).

ISVI for each urban area was calculated according to the following Eq. (1) (adapted from Frazier et al. (2014):

$$ISVI = E + S - R , \tag{1}$$

10 where ISVI is the integrated social vulnerability index, E is the exposure, S is the sensitivity, and R is the resilience. Each vulnerability component was estimated using Eq. (2) (adapted from Frazier et al. (2014):

$$V_C = \sum_{f=1}^n w_f \cdot S_f , \tag{2}$$

where V_C is the vulnerability component (exposure, sensitivity or resilience), w_f is the weight allocated to n factor, and S_f are the factor scores of n factor.

15 The value of a certain vulnerability component was the sum of the factor scores multiplied by their respective weights. The index construction method implemented coincides with the same method developed by Frazier et al. (2014), although the tolerance statistic was used here as a weighting method. Tolerance is a statistical test to detect multicollinearity (Sarstedt and Mooi, 2014). Tolerance reaches a maximum value of 1 when a factor has no degree of multicollinearity with the other factors and a minimum value of 0 when a factor is a perfect linear combination of the others. Thus, vulnerability factors that
20 expressed less redundant information would have more weight in the ISVI.

2.2.6 Identification of social vulnerability patterns

LCCA is a model-based clustering approach that was implemented (using Latent Gold[®] 4.5) with the purpose of identifying social vulnerability patterns within the study area. Urban areas of interest were classified into clusters (Vermunt and Magidson, 2002), where the statistical model showed the sources of vulnerability for each cluster. This classification was
25 made by creating a latent categorical variable which measures the probability of belonging to a certain cluster according to the characteristics of the vulnerability factors. Factor scores were used as indicators in order to identify the different clusters. A z-standardization of factor scores was implemented before introducing them into the statistical software. Five models integrating from one (sample homogeneity) to five clusters (sample heterogeneity with 5 patterns) were considered. Information criteria based on the model log likelihood BIC (i.e., Bayesian Information Criterion) and CAIC (i.e., Akaike's
30 Information Criterion) were used as model selection tools in order to choose the best model, based on the minimum values of these two criteria (Morin et al., 2011).

3 Results

3.1 Integrated Social Vulnerability Index (ISVI)

The dendrogram shows the five groups of variables that were differentiated by the HSA (Fig. 3). Groups were homogeneous both in number of variables (each comprising between 10 and 13 variables) and in type of variables included. The first group contained variables mainly related to large collective buildings. The second group of variables was connected to the kind of constructions and the economic potential of the region. The third group was related to demographic characteristics and the employment situation in the region. The fourth group of variables was primarily associated with elderly population. Finally, the fifth group did not show a clear dominance of any variables over others, although certain variables displayed significant correlation (i.e., $p < 0.05$).

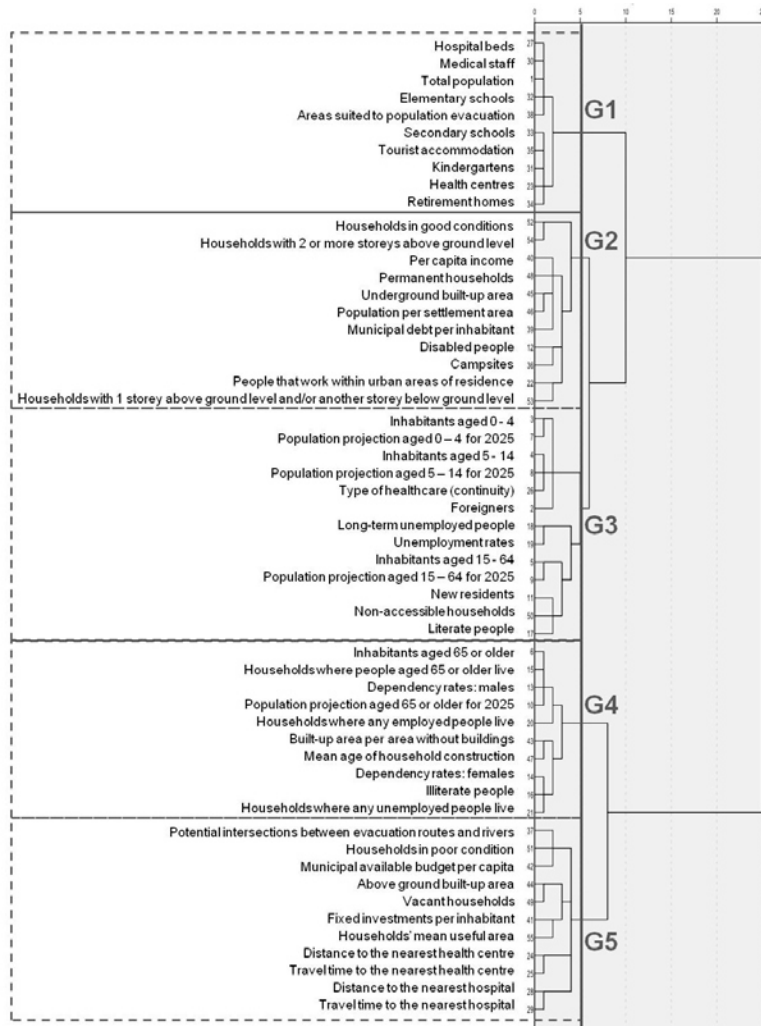


Figure 3: Dendrogram resulting from the HSA. Each rectangle corresponds to an identified group, with a total of five groups (G1, G2, G3, G4 and G5).

A total of 11 vulnerability factors were extracted from the groups of variables identified by the dendrogram (Table 2): 1) total social exposure; 2) exposure in the urban built-up environment; 3) constructive resilience; 4) constructive exposure; 5) youth social sensitivity; 6) mature social resilience; 7) labour social sensitivity; 8) social sensitivity due to dependency; 9) economic resilience due to investments; 10) social hospital sensitivity; and 11) social health sensitivity. In all cases, the KMO scores were higher than 0.5 and the Barlett's test of sphericity values were significant (i.e., $p < 0.05$). For vulnerability factors comprising two variables, the value of the correlation coefficient is indicated instead of the KMO score. Correlation coefficients for these vulnerability factors are considered significant (i.e., $p < 0.05$). In addition, all identified vulnerability factors show a percentage of explained variance over 70%. Factor loadings were used to allocate names to the vulnerability factors. This allowed us to classify vulnerability factors as they express exposure, sensitivity or resilience. Consequently, factors number one, two and four were considered to state exposure; factors number five, seven, eight, ten and eleven express sensitivity; and factors number three, six and nine were considered to state resilience.

15

20

25

30

Table 2: Vulnerability factors identified with the PCA and additional statistical information (PCA results). The sign of the variable loadings indicates whether the correlation among variables that make up a certain vulnerability factor is positive or negative.

Factor	Variables	KMO ^a / Correlation coefficient ^b	Explained variance	Loadings	Factor Name	Component	
1	TPOP	Total population	0.846 ^a	83.68	0.968	Total Social Exposure	Exposure
	HEALTH_C	Health centres			0.886		
	H_BEDS	Hospital beds			0.944		
	MED_ST	Medical staff			0.949		
	KINDERG	Kindergartens			0.918		
	ELEM_SCH	Elementary schools			0.974		
	SEC_SCH	Secondary schools			0.932		
	RET_HOME	Retirement homes			0.757		
TOUR_AC	Tourist accommodation	0.886					
2	POP_SETL	Population per settlement area	0.681 ^a	70.82	0.777	Exposure in the Urban Built-Up Environment	Exposure
	VACANT_H	Vacant households			-0.932		
	UNDER_GR	Underground built-up area			0.788		
	PERM_H	Permanent households			0.860		
3	GDCOND	Households in good condition	-0.431 ^b	71.54	0.846	Constructive Resilience	Resilience
	BADCOND	Households in poor condition			-0.846		
4	ST_AGBG	Households with 1 storey above ground level and/or another storey below ground level	-0.655 ^b	82.73	0.910	Constructive Exposure	Exposure
	ST_AGL	Households with 2 or more storeys above ground level			-0.910		
5	POP0	Inhabitants aged 0-4	0.720 ^a	78.03	0.898	Youth Social Sensitivity	Sensitivity
	POP5	Inhabitants aged 5-14			0.901		
	PROJ_0	Population projection aged 0-4 for 2025			0.827		
	PROJ_5	Population projection aged 5-14 for 2025			0.906		
6	POP15	Inhabitants aged 15-64	0.791 ^b	89.55	0.946	Mature Social Resilience	Resilience
	PROJ_15	Population projection aged 15-64 for 2025			0.946		
7	UN_RAT	Unemployment rates	0.692 ^a	75.95	0.912	Labour Social Sensitivity	Sensitivity
	LT_UNEMP	Long-term unemployed people			0.872		
	HS_0UNEMP	Households where any unemployed people live			-0.828		
8	POP65	Inhabitants aged 65 or older	0.704 ^a	70.01	0.944	Social Sensitivity due to Dependency	Sensitivity
	PROJ_65	Population projection aged 65 or older for 2025			0.828		
	DEPRAT_M	Dependency rates: males			0.819		
	DEPRAT_F	Dependency rates: females			0.860		
	HOUSE_OLD	Households where people aged 65 or older live			0.808		
	ILLITER	Illiterate people			0.748		
9	FIX_INV	Fixed investments per inhabitant	0.782 ^b	89.08	0.944	Economic Resilience due to Investments	Resilience
	BUDGET	Municipal available budget per capita			0.944		
10	DIST_H	Distance to the nearest hospital	0.863 ^b	93.16	0.965	Social Hospital Sensitivity	Sensitivity
	TIME_H	Travel time to the nearest hospital			0.965		
11	DIST_HC	Distance to the nearest health centre	0.869 ^b	93.43	0.967	Social Health Sensitivity	Sensitivity
	TIME_HC	Travel time to the nearest health centre			0.967		

5 Factor scores for each vulnerability factor were depicted using the quintiles classification (i.e., 20, 40, 60 and 80 percentiles) with 5 classes: *i*) very low; *ii*) low; *iii*) medium; *iv*) high and *v*) very high (Fig. 4).

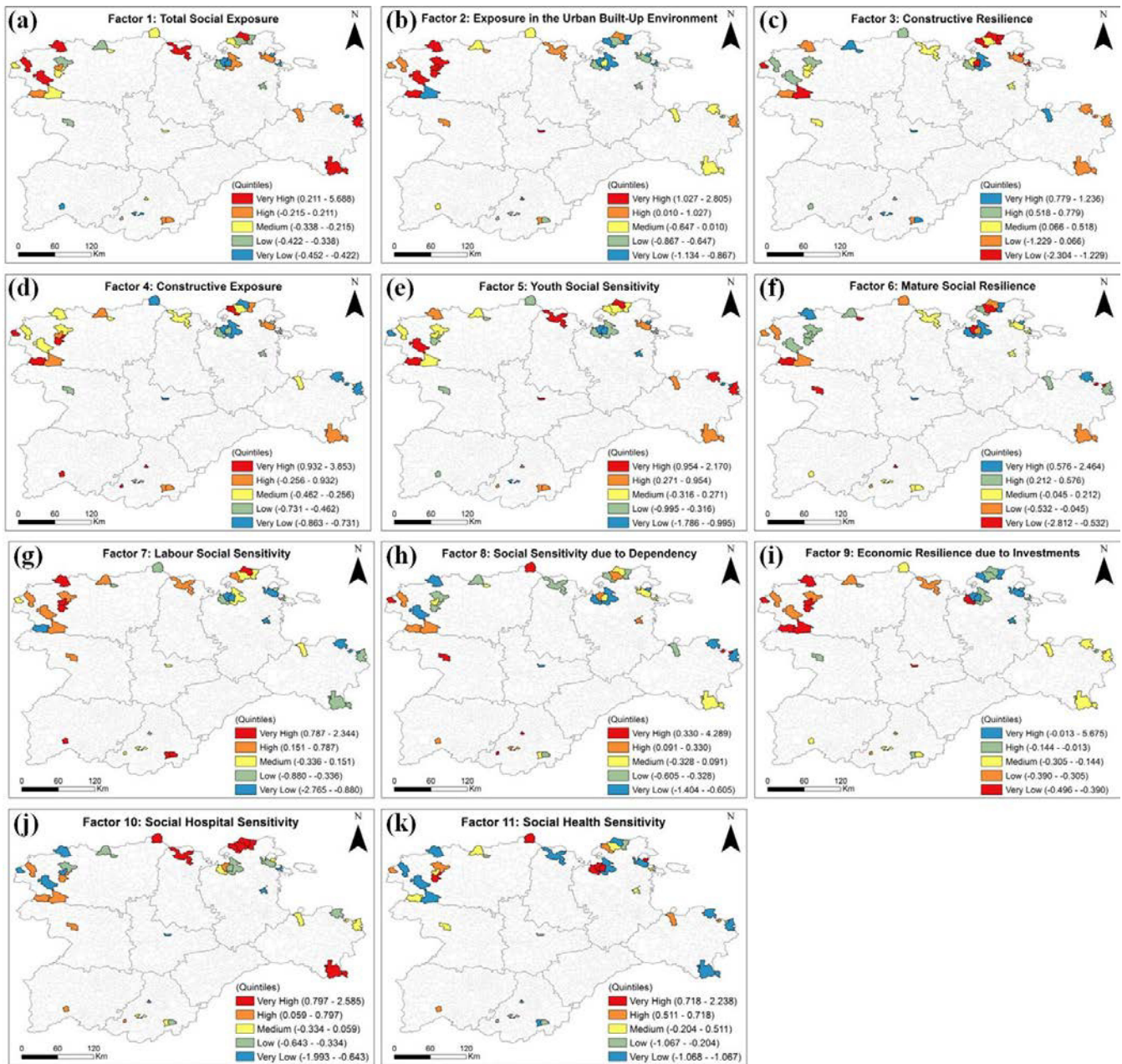


Figure 4: Factor scores for identified vulnerability factors. For exposure and sensitivity factors, very high categories correspond to red colors while for resilience factors, very high categories correspond to blue colors.

5 Figure 5 illustrates, on the one hand, the ISVI value for each urban area using the quintiles classification. In this regard, ISVI has high spatial variability, defining values that range from 0.085 to -0.055. Urban areas with highest ISVI values are mainly concentrated in the northwest, while urban areas with the lowest values are found in the east and northeast of Castilla y

León. Each urban area has an associated bar chart showing the decomposition of each ISVI value into its components (exposure, sensitivity and resilience). The direction of the bar indicates whether the sign of the vulnerability component is negative or positive. The height of the bar depicts the value of the vulnerability component (i.e., each vulnerability component was calculated by combining any vulnerability factors which contributed to each component, considering factor scores and the different weights). In addition, the numbers located in each bar show the categories based on the classification of quintiles in which each vulnerability component is found. Number 1 is associated with a very low category (i.e., very low exposure, sensitivity and resilience) and number 5 with a very high category (i.e., very high exposure, sensitivity and resilience).

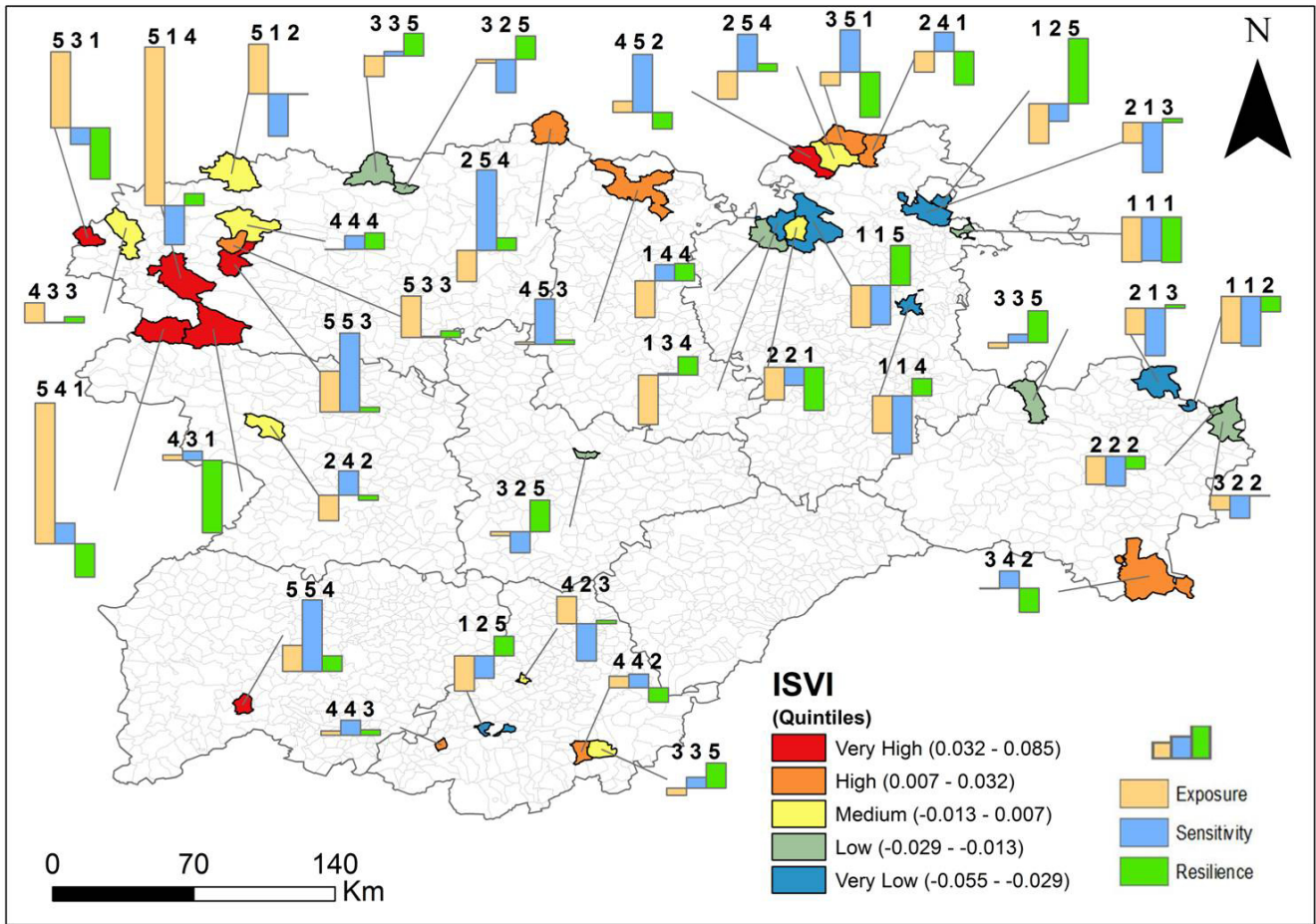


Figure 5: ISVI values and its decomposition into vulnerability components.

3.2 Social vulnerability patterns

The BIC and CAIC statistics were used in order to select the more parsimonious number of clusters (i.e. the number that provides as much information as possible taking into account the number of parameters to estimate). The minimum values of BIC and CAIC determined that the optimum number of clusters of urban areas was three (Table 3).

5

Table 3: Model fit summary of latent class cluster models initially considered.

	Log-likelihood (LL)	BIC (LL)	CAIC (LL)	Number of parameters
One cluster	-603.153	1286.904	1308.904	22
Two clusters	-501.287	1167.435	1212.435	45
Three clusters*	-440.610	1130.342	1198.342	68
Four clusters	-407.146	1147.675	1238.675	91
Five clusters	-381.371	1180.388	1294.388	114

***Best model according to BIC and CAIC**

In order to evaluate the vulnerability factor usefulness in terms of identifying these patterns, the parameters for each identified cluster are shown in Table 4. Neither the "social hospital sensitivity" factor nor the "economic resilience due to investments" factor was statistically significant when discriminating among the three clusters of urban areas ($p > 0.05$, highlighted in bold in Table 4). The percentage given under each cluster title shows the proportion of urban areas making up each cluster.

Table 4: Parameters of urban area clusters associated with vulnerability factors. Vulnerability factors are sorted by vulnerability component (exposure, sensitivity and resilience)

Vulnerability factors	Cluster 1 (51.1%)	Cluster 2 (30.9%)	Cluster 3 (18.0%)	Robust Wald statistic	p-value	R ²
Factor 1: Total Social Exposure	-0.295	-0.549	0.844	9.794	0.008	0.244
Factor 2: Exposure in the Urban Built-Up Environment	-0.054	-0.708	0.779	37.071	0.000	0.428
Factor 4: Constructive Exposure	0.659	-0.253	-0.406	13.871	0.001	0.240
Factor 5: Youth Social Sensitivity	-0.012	-0.998	1.010	30.913	0.000	0.478
Factor 7: Labour Social Sensitivity	0.487	-0.740	0.253	16.665	0.000	0.303
Factor 8: Social Sensitivity due to Dependency	0.092	0.706	-0.798	38.442	0.000	0.262
Factor 10: Social Hospital Sensitivity	0.309	0.302	-0.611	3.363	0.190	0.127
Factor 11: Social Health Sensitivity	-0.012	0.860	-0.848	34.559	0.000	0.350
Factor 3: Constructive Resilience	-0.020	-0.418	0.438	6.017	0.049	0.087
Factor 6: Mature Social Resilience	-0.204	-0.501	0.704	20.442	0.000	0.174
Factor 9: Economic Resilience due to Investments	-0.307	0.593	-0.286	3.740	0.150	0.175

Finally, Figure 6 shows the three different clusters of identified urban areas, which help us to characterize the profile of each detected pattern. Moreover, each cluster is associated with a bar chart which depicts the cluster profile and it is depicted over the most representative urban area of each of them, calculated by taking into account the number of coincidences among the signs and the minimum distances between factor scores for each urban area and the mean factor scores for each identified cluster. These bar charts gather the standard deviation values from the mean for each vulnerability factor, values that are located above each bar. The direction of the bar is related to the sign of these standard deviation values. That is, for factors that express exposure or sensitivity, positive values mean more exposure or sensitivity than the mean of the cluster. However, for factors that express resilience, positive values mean more resilience than the mean of the cluster. Thus, each cluster can be characterized:

Cluster 1 comprises 51.1% of urban areas of interest (i.e., a total of 20) and it is characterized by being made up of urban areas with the highest levels in the constructive exposure and the labour social sensitivity factors.

Cluster 2 comprises 30.9% of urban areas (i.e., a total of 12). It contains urban areas with the highest levels of social health sensitivity and of social sensitivity due to dependency factors. On the other hand, these urban areas present the lowest levels in the youth social sensitivity factor and in the labour social sensitivity factor. Moreover, urban areas with the lowest levels in the total social exposure and the exposure in the urban built-up environment are included here. Regarding resilience factors, cluster 2 contains urban areas with the lowest levels in the constructive resilience and mature social resilience factors.

Cluster 3 comprises 18.0% of urban areas (i.e., a total of 7). It is characterized by being made up of urban areas with the highest values in the total social exposure, exposure in the urban built-up environment and youth social sensitivity factors. These urban areas also present the highest values in the constructive resilience factor and the lowest values in the constructive exposure factor. On the other hand, these urban areas present the lowest values in the social sensitivity due to dependency and social health sensitivity factors. Moreover, these urban areas present the highest values of mature social resilience factor.

It seems that there is a relationship between the ISVI and the clusters to which urban areas belong to Figure 6. In this regard, there are only significant differences between the ISVI values of clusters 1 and 2 (i.e., $p < 0.05$; ANOVA analysis). Moreover, it is verified that cluster 1 urban areas are more vulnerable than cluster 2 urban areas, with an ISVI mean value of 0.013 and -0.017, respectively.

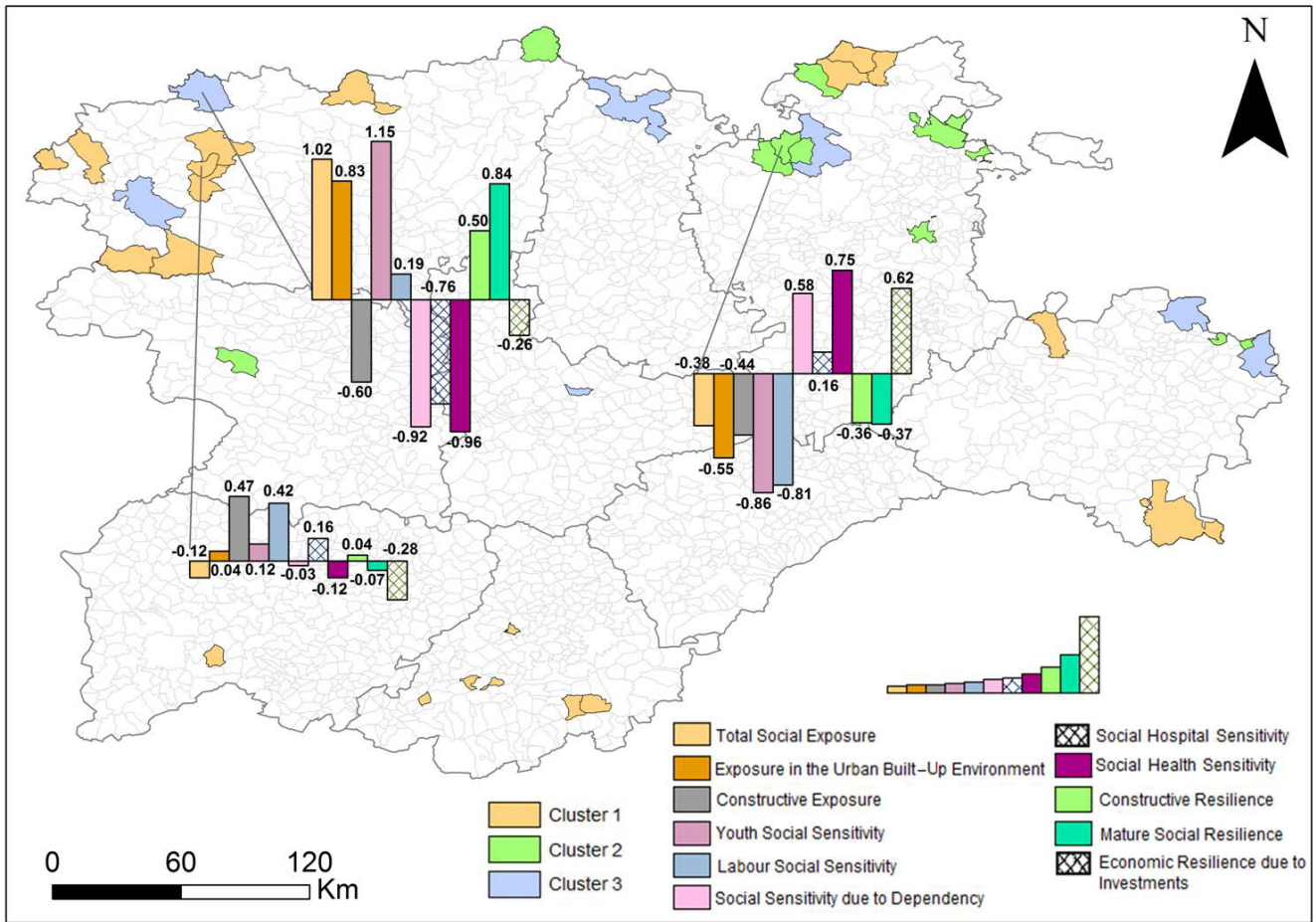


Figure 6: Characteristics of the urban areas that form the identified clusters. Bars with a meshed plot represent factors which were not statistically significant in the discrimination of clusters of urban areas. Bars are sorted by vulnerability component (exposure, sensitivity and resilience).

5 4 Discussion

4.1 Data sources and methodology

Flash floods usually affect small mountainous urban areas (Marchi et al., 2010; Terti et al., 2015). Generally, the information available in these areas is limited, either because it is not available in public databases (i.e., it should be requested from the different councils) or because it is not generated at this work scale (i.e., it should be estimated from a bigger work scale), which means a limitation in accomplishing any assessment related to flash floods (Ruin et al., 2009). However, this constraint is not usually presented for studies to characterize fluvial floods since they frequently affect significant urban areas in terms of population, usually meaning that more data and a larger number of event records are available.

This lack of information could condition the selected work scale which should coincide with the flood risk mitigation planning scale (Cash and Moser, 2000). An insufficient work scale could lead to the implementation of homogeneous vulnerability reduction measures in areas where vulnerability spatial variability is high which would reduce their effectiveness or might not provide a uniform vulnerability reduction (Eakin and Luers, 2006; Frazier et al., 2014). Here, the selected work scale was the urban area, as this entity in the region of Castilla y León tends to be small and homogeneous. Furthermore, sensitivity and resilience are usually considered as static components (i.e., results capture a snapshot of vulnerability), when in fact they vary over space and time (Cutter et al., 2003; Eakin and Luers, 2006). The identification of spatial patterns here represents a step forward in that direction, which means an improvement of the FRM at regional scale. However, regarding temporal variability, we suggest periodic monitoring of variables identified as an explanation to social vulnerability to flash floods. This would allow urban areas to know how SVI values behave over time by means of periodic recalculation.

Concerning the ISVI calculation, it is critical to consider that ISVI values are not absolute. This means that the ISVI can be used to qualitatively compare whether an urban area is more vulnerable than others or in what proportion (Cutter et al., 2013). As regards the methodology proposed here, the preliminary implementation of a HSA helps to overcome the PCA sample size limitation (Sarstedt and Mooi, 2014). Regarding the above, most published works do not discuss this aspect or it is tackled by directly adding the variables (Balteanu et al., 2015). The HSA enables the division of vulnerability variables into groups. However, it did not provide information on relative significance of variables within each group, making subsequent implementation of the PCA necessary (Cutter et al., 2003; Fekete, 2009; Cutter et al., 2013; Nelson et al., 2015; Hummell et al., 2016). Regarding the weighting method implemented here, although many authors support the idea of assigning equal weight to the factors (Chakraborty et al., 2005), it seems reasonable to think that not all factors have the same importance in the ISVI construction (Brooks et al., 2005; Eakin and Luers, 2006; Liu and Li, 2016), especially when the number of variables that form each factor and their explained variance can vary. It is also possible that even the importance of each factor varies spatially. The above can be solved by carrying out geographically weighted principal component analysis (GWPCA) (Frazier et al., 2014; Gollini et al., 2015).

4.2 Integrated social vulnerability and variables involved

In spite of differences among variables considered in literature as a means of explaining social vulnerability, there are some key variables common to all considered indicators, such as age, gender, race, socioeconomic status and living conditions (Cutter et al., 2003; Adger et al., 2004; Penning-Rowsell et al., 2005; Frazier et al., 2014). However, each region presents particular characteristics and constraints, which must be considered during the variable selection procedure (Frazier et al., 2014). Vulnerability factors identified in Castilla y León (see Table 2) reflect the specific characteristics of this region whose cartographic representation gives us an idea of the vulnerability spatial distribution and helps us spatially identify vulnerability hotspots (see Fig. 4). Vulnerability factors which make up the exposure component (see Fig. 4 (a), (b) and (d)) are mainly related to public buildings such as schools, kindergartens or health facilities. Usually they are occupied by

sensitive people (e.g., small children or elderly population, patients, etc.), who generally require external assistance during an evacuation due to flash floods. Moreover, single-family dwellings abound in the study area, which tend to have basements and where there are usually rooms on the ground floor (i.e., living rooms, kitchens and sometimes even bedrooms), being both spaces prone to flooding (Bodoque et al., 2016b; Karagiorgos et al., 2016).

5 Concerning vulnerability factors making up the sensitivity component (see Fig. 4 (e), (g), (h), (j) and (k)), urban areas of interest have a mean dependency rate higher than 70%, particularly due to elderly people who hinder the population evacuation process because they tend to have reduced mobility. Moreover, the elderly usually need economic support in the post-disaster period (Cutter et al., 2003). Unemployment is another vulnerability factor to be considered. It is related to the possible inability of a household to invest economical resources in flood insurance or in flood mitigation measures, which
10 contribute to a slower recovery (Cutter et al., 2003; Fekete, 2010). With regard to health facility accessibility, the usual lack of nearby medical services in the urban areas studied may make immediate relief difficult and extend disaster recovery (Cutter et al., 2003).

Finally, as far as the resilience component is concerned (see Fig. 4 (c), (f) and (i)), households in good condition were considered to have high structural capacity to cope with flood impacts, so that direct losses and repair costs would be lower
15 (Cutter et al., 2003). Inhabitants aged 15 to 64 were also deemed to be a resilient factor, since they can help to evacuate population during a flash flood event (Fekete, 2010). Lastly, urban areas with a higher available public budget per capita may implement a larger number of mitigation measures aiming to reduce flood damage. Fixed investments per capita are related to the level of economic wealth, which can determine the ability to absorb losses and enhance resilience (e.g., by means of implementing individual flood risk mitigation measures) (Kunreuther et al., 2013; Haer et al., 2016).

20 Integrated social vulnerability assessment analyzes interactions among the different vulnerability components and even between them and the ISVI (see Fig. 5). In addition, there is great heterogeneity in the combination of vulnerability components that generate the different ISVI categories. In spite of the above, the most vulnerable urban areas have the highest exposure component values. Urban areas in the high ISVI category usually have higher values for the sensitivity component than for exposure, although exposure quintile categories range from 2 to 5. Urban areas included in very low and
25 low ISVI categories have the highest resilience component values, coinciding with the lowest levels of exposure. Thus, the highest ISVI values are mainly controlled by the exposure component.

These variations in ISVI values confirm the idea supported by other authors that vulnerability has a high spatial variability and, therefore, it cannot be treated homogeneously (Cutter et al., 2008; Frazier et al., 2014). Integrated social vulnerability assessments not only help to know which factors should be acted on to reduce vulnerability, but also which factors should be
30 strengthened to increase resilience. In the same way, identification of vulnerability patterns (see Fig. 6) also helps us discern the sources of vulnerability and resilience within each cluster of urban areas and, especially, if these influences are direct or inverse and how strong they are. This facilitates the development of specific strategies of FRM for each cluster. For instance, cluster 2 is composed of urban areas with ageing populations, usually lacking nearby health facilities and whose households often are in poor condition. Therefore, specific mitigation measures could be proposed in these areas such as increasing

financial support to help families meet the cost of implementing individual flood risk mitigation measures or promoting renovation of households in poor condition through a system of economic incentives, as well as the suitable design of action and evacuation protocols that reduce potential losses derived from flash flood events, particularly with regard to elderly people with reduced mobility.

5 4.3 Policy implications

As high human and economic losses continue today due to flash floods (Wilhelmi and Morss, 2013), this draws attention to the need for a change in traditional FRM towards an integrated approach, which requires comprehensive analysis of the social risk component (Koks et al., 2015). For this purpose, it is essential to perform a social vulnerability analysis from a holistic point of view, which means that not only it is important to identify which socioeconomic and demography characteristics increase population sensitivity to be damaged by a flash flood, but also to know which features increase a population's capacity to resist, cope with and recover from its impacts (Cutter et al., 2010; Frazier et al., 2014; Zhou et al., 2015), as has been done here. That would enable local competent authorities to plan and implement specific strategies to reduce vulnerability and strengthen resilience which also means developing specific mitigation measures to reduce flood risks (Frazier et al., 2014; Nelson et al., 2015; Hummell et al., 2016), going further than the traditional approach of delineation of flood prone areas and design of structural mitigation measures (i.e. seeking for not only reducing flood hazard). The identification of social vulnerability patterns help to identify the most suitable mitigation measures for each cluster of urban areas identified by LCCA, in addition to prioritize the available resources. For instance, mitigation measures for those urban areas included in cluster 1 should be targeted towards improving the physical resilience (e.g. raising the first-floor elevation above ground level) and helping population financially with the implementation of mitigation measures (e.g. providing financial aid to those dwellings located at flood-prone areas). On the other hand, the population that live in those urban areas included in cluster 2 are highly dependent on external assistance due to high rates of ageing population, so emergency services should have adequately characterized the different evacuation routes (e.g. promoting the design of evacuation routes and the construction of shelters near those urban areas). Finally, mitigation measures for urban areas included in cluster 3 should be aimed at the collective facilities (e.g. practicing of flood emergency drills) and to encourage the implementation of individual mitigation strategies (e.g. through a financial incentive system, such as the repayment of part of the money spent at municipal taxes). However, in order to achieve greater effectiveness for FRM plans, it is necessary to engage all stakeholders in them, both public authorities and communities (Eakin and Luers, 2006; Koks et al., 2015; Haer et al., 2016). This is really important in small mountainous areas prone to flash flooding, because they are managed by local administrations where available economic resources tend to be limited, so individual adaptation measures are particularly relevant, partly depending on the risk perception and the awareness level (Bodoque et al., 2016a). Furthermore, both individual social networks and social context are of key importance in decision-making related to public preparedness (Haer et al., 2016). Thus, and since the social component plays a decisive role, a suitable design is required for flood risk communication strategies accompanying integrated social vulnerability analysis. Traditional top-down

communication strategies have proven ineffective, so a change is currently occurring towards people-centred strategies, which seeks to reflect population heterogeneity (Bodoque et al., 2016a; Haer et al., 2016). Therefore, a comprehensive characterization of the social component of flood risk requires not only an integrated social vulnerability assessment, but also that affected population are aware of their situation and have appropriate knowledge to reduce possible flood impacts individually (Albano et al., 2015), thus seeking social learning which can be translated into a disaster risk reduction (Cutter et al., 2008).

5 Conclusions

A comprehensive characterization of social vulnerability is critical for an integrated FRM. The implementation of an HSA helps to overcome PCA sample size limitation, meaning an alternative methodology to the usually used to construct an ISVI in areas where available data is limited. The results show the high spatial heterogeneity of the social vulnerability within the study region and the high variability in the ISVI scores regarding the interactions between vulnerability components, which make an integrated analysis more important. The identification of vulnerability patterns through the LCCA gives the sources of vulnerability in each urban area, which simplifies the spatial heterogeneity analysis of the social vulnerability and enables to know what aspects need to be improved in order to decrease sensitivity and exposure and what aspects need to be reinforced to increase resilience. Thus, a better integration of the ISVI results into FRM plans and policies is made possible enabling to propose specific strategies of vulnerability reduction, increasing their efficiency.

Author contribution

Jose M. Bodoque and A. Diez-Herrero developed the idea. E. Aroca-Jimenez built the database. Juan A. Garcia designed the methodological process. Juan A. Garcia and E. Aroca-Jimenez carried it out. E. Aroca-Jimenez prepared the manuscript with contributions from all co-authors. The authors declare that they have no conflict of interest.

Acknowledgements

This research has been funded by the MARCoNI Project (MINECO, CGL2013-42728-R) of the Spanish National Plan for Scientific and Technical Research and Innovation. The authors wish to thank the following for their help: the Castilla y León regional government and regional employment observatory; Regional Civil Protection Department of National Government (José Luis González Álvarez, Roberto Martínez-Alegría López and volunteers); and finally all the municipal councils included in this study. The authors would also like to thank Dr. Susan Cutter, Hazards and Vulnerability Research Institute, University of South Carolina for her helpful comments on an earlier draft of the paper. The authors are also grateful to the two anonymous reviewers for their recommendations and suggestions that greatly improved the manuscript.

References

- Adger, W. N., Brooks, N., Bentham, G., Agnew, M., and Eriksen, S.: New indicators of vulnerability and adaptive capacity, Tyndall Centre Technical Reports, Tyndall Centre for Climate Change Research Norwich, 128 pp., http://www.tyndall.ac.uk/sites/default/files/it1_11.pdf, 2004.
- 5 Albano, R., Sole, A., and Adamowski, J.: READY: a web-based geographical information system for enhanced flood resilience through raising awareness in citizens, *Natural Hazards and Earth System Sciences*, 15, 1645-1658, doi: 10.5194/nhess-15-1645-2015, 2015.
- Asadzadeh, A., Kotter, T., and Zebardast, E.: An augmented approach for measurement of disaster resilience using connective factor analysis and analytic network process (F'ANP) model, *International Journal of Disaster Risk Reduction*, 10
14, 504-518, doi: 10.1016/j.ijdr.2015.10.002, 2015.
- Balteanu, D., Micu, D., Costache, A., Diana, D., Persu, M., and Sgem: Socio-economic Vulnerability to Floods and Flash-floods in the Bend Subcarpathians, Romania, 15th International Multidisciplinary Scientific Geoconference (SGEM), Albena, Bulgaria, 577-584, WOS:000371663400074, 2015.
- Barredo, J. I.: Major flood disasters in Europe: 1950–2005, *Natural Hazards*, 42, 125-148, doi: 10.1007/s11069-11006-19065-11062, 2007.
- 15 Birkmann, J.: *Measuring Vulnerability to Natural Hazards: Towards Disaster Resilient Societies*, United Nations University Press, 720 pp., 2013.
- Birkmann, J., Cardona, O. D., Carreno, M. L., Barbat, A. H., Pelling, M., Schneiderbauer, S., Kienberger, S., Keiler, M., Alexander, D., Zeil, P., and Welle, T.: Framing vulnerability, risk and societal responses: the MOVE framework, *Natural Hazards*, 67, 193-211, doi: 10.1007/s11069-013-0558-5, 2013.
- 20 Bodoque, J. M., Díez-Herrero, A., Eguibar, M. A., Benito, G., Ruiz-Villanueva, V., and Ballesteros-Canovas, J. A.: Challenges in paleoflood hydrology applied to risk analysis in mountainous watersheds - A review, *Journal of Hydrology*, 529, 449-467, doi: 10.1016/j.jhydrol.2014.12.004, 2015.
- Bodoque, J. M., Amérigo, M., Díez-Herrero, A., García, J. A., Cortés, B., Ballesteros-Cánovas, J. A., and Olcina, J.: Improvement of resilience of urban areas by integrating social perception in flash-flood risk management, *Journal of Hydrology*, 541, 665-676, <http://dx.doi.org/10.1016/j.jhydrol.2016.02.005>, 2016a.
- Bodoque, J. M., Guardiola-Albert, C., Aroca-Jiménez, E., Eguibar, M. A., and Martínez-Chenoll, M. L.: Flood Damage Analysis: First Floor Elevation Uncertainty Resulting from LiDAR-Derived Digital Surface Models, *Remote Sensing*, 8, 604, doi: 10.3390/rs8070604, 2016b.
- 30 Borga, M.: Forecasting, Early Warning and Event Management: Non-structural Protection Measures for Flash Floods and Debris Flows, in: *Dating Torrential Processes on Fans and Cones: Methods and Their Application for Hazard and Risk Assessment*, edited by: Schneuwly-Bollschweiler, M., Stoffel, M., and Rudolf-Miklau, F., *Advances in Global Change Research*, 47, Springer Netherlands, 439, doi: 10.1007/978-94-007-4336-6_27, 2013.
- Brooks, N., Adger, W. N., and Kelly, P. M.: The determinants of vulnerability and adaptive capacity at the national level and the implications for adaptation, *Global Environmental Change-Human and Policy Dimensions*, 15, 151-163, doi: 10.1016/j.gloenvcha.2004.12.006, 2005.
- 35 Burton, C., and Cutter, S. L.: Levee failures and social vulnerability in the Sacramento-San Joaquin Delta area, California, *Natural Hazards Review*, 9, 136-149, doi: 10.1061/(asce)1527-6988(2008)1069:1063(1136), 2008.
- Caballero, F. J., Perotas, H., Guerrero, J., Martínez, B., Fernández, I., Goya, R., and Cuadrado, M. A.: El Sistema Nacional de Cartografía de Zonas Inundables en la Demarcación Hidrográfica del Duero, III Jornadas de Ingeniería del Agua (JIA 2011), Barcelona, <http://www.ingenieriadelagua.com/2004/JIA/Jia2011/pdf/p505.pdf>, 2011.
- Cash, D. W., and Moser, S. C.: Linking global and local scales: designing dynamic assessment and management processes, *Global Environmental Change-Human and Policy Dimensions*, 10, 109-120, doi: 10.1016/s0959-3780(00)00017-0, 2000.
- 45 Chakraborty, J., Tobin, G. A., and Montz, B. E.: Population evacuation: assessing spatial variability in geophysical risk and social vulnerability to natural hazards, *Natural Hazards Review*, 6, 23-33, doi: 10.1061/(asce)1527-6988(2005)1066:1061(1023), 2005.
- Clark, G. E., Moser, S. C., Ratick, S. J., Dow, K., Meyer, W. B., Emani, S., Jin, W., Kasperson, J. X., Kasperson, R. E., and Schwarz, H. E.: Assessing the vulnerability of coastal communities to extreme storms: the case of Revere, MA., USA, *Mitigation and adaptation strategies for global change*, 3, 59-82, doi: 10.1023/a:1009609710795, 1998.

- Creutin, J. D., Borga, M., Lutoff, C., Scolobig, A., Ruin, I., and Creton-Cazanave, L.: Catchment dynamics and social response during flash floods: the potential of radar rainfall monitoring for warning procedures, *Meteorological Applications*, 16, 115-125, doi: 10.1002/met.128, 2009.
- 5 Cutter, S. L., Boruff, B. J., and Shirley, W. L.: Social vulnerability to environmental hazards, *Social Science Quarterly*, 84, 242-261, doi: 10.1111/1540-6237.8402002, 2003.
- Cutter, S. L., Barnes, L., Berry, M., Burton, C., Evans, E., Tate, E., and Webb, J.: A place-based model for understanding community resilience to natural disasters, *Global Environmental Change-Human and Policy Dimensions*, 18, 598-606, doi: 10.1016/j.gloenvcha.2008.07.013, 2008.
- 10 Cutter, S. L., Burton, C. G., and Emrich, C. T.: Disaster Resilience Indicators for Benchmarking Baseline Conditions, *Journal of Homeland Security and Emergency Management*, 7, doi: 10.2202/1547-7355.1732, 2010.
- Cutter, S. L., Emrich, C. T., Morath, D. P., and Dunning, C. M.: Integrating social vulnerability into federal flood risk management planning, *Journal of Flood Risk Management*, 6, 332-344, doi: 10.1111/jfr3.12018, 2013.
- Dwyer, A., Zoppou, C., Nielsen, O., Day, S., and Roberts, S.: Quantifying social vulnerability: a methodology for identifying those at risk to natural hazards, *Geoscience Australia Record 2004/14*, Australia, 92 pp.,
15 <http://www.geosci.usyd.edu.au/users/prey/Teaching/Geos-2111GIS/Ref/GA4267-IdentifyingRisks.pdf>, 2004.
- Eakin, H., and Luers, A. L.: Assessing the vulnerability of social-environmental systems, *Annual Review of Environment and Resources*, 31, 365-394, doi: 10.1146/annurev.energy.30.050504.144352, 2006.
- Fekete, A.: Validation of a social vulnerability index in context to river-floods in Germany, *Natural Hazards and Earth System Sciences*, 9, 393-403, doi: 10.5194/nhess-5199-5393-2009, 2009.
- 20 Fekete, A.: Assessment of Social Vulnerability River Floods in Germany, United Nations University, Institute for Environment and Human Security (UNU-EHS), 130 pp., <http://collections.unu.edu/eserv/UNU:1978/pdf8069.pdf>, 2010.
- Frazier, T. G., Thompson, C. M., and Dezzani, R. J.: A framework for the development of the SERV model: A Spatially Explicit Resilience-Vulnerability model, *Applied Geography*, 51, 158-172, doi: 10.1016/j.apgeog.2014.04.004, 2014.
- 25 Frigerio, I., Ventura, S., Strigaro, D., Mattavelli, M., De Amicis, M., Mugnano, S., and Boffi, M.: A GIS-based approach to identify the spatial variability of social vulnerability to seismic hazard in Italy, *Applied Geography*, 74, 12-22, doi: 10.1016/j.apgeog.2016.06.014, 2016.
- Fuessel, H. M.: Vulnerability: A generally applicable conceptual framework for climate change research, *Global Environmental Change-Human and Policy Dimensions*, 17, 155-167, doi: 10.1016/j.gloenvcha.2006.05.002, 2007.
- 30 Gaume, E., Bain, V., Bernardara, P., Newinger, O., Barbuc, M., Bateman, A., Blaskovicova, L., Bloeschl, G., Borga, M., Dumitrescu, A., Daliakopoulos, I., Garcia, J., Irimescu, A., Kohnova, S., Koutroulis, A., Marchi, L., Matreata, S., Medina, V., Preciso, E., Sempere-Torres, D., Stancalie, G., Szolgay, J., Tsanis, I., Velasco, D., and Viglione, A.: A compilation of data on European flash floods, *Journal of Hydrology*, 367, 70-78, doi: 10.1016/j.jhydrol.2008.12.028, 2009.
- Gollini, I., Lu, B. B., Charlton, M., Brunson, C., and Harris, P.: GWmodel: An R Package for Exploring Spatial Heterogeneity Using Geographically Weighted Models, *Journal of Statistical Software*, 63, 1-50, doi:
35 10.18637/jss.v18063.i18617, 2015.
- Grosso, N., Dias, L., Costa, H. P., Santos, F. D., and Garrett, P.: Continental Portuguese Territory Flood Social Susceptibility Index, *Natural Hazards and Earth System Sciences*, 15, 1921-1931, doi: 10.5194/nhess-15-1921-2015, 2015.
- 40 Haer, T., Botzen, W. J. W., and Aerts, J.: The effectiveness of flood risk communication strategies and the influence of social networks-Insights from an agent-based model, *Environmental Science & Policy*, 60, 44-52, doi: 10.1016/j.envsci.2016.03.006, 2016.
- Hummell, B. M. D., Cutter, S. L., and Emrich, C. T.: Social Vulnerability to Natural Hazards in Brazil, *International Journal of Disaster Risk Science*, 7, 111-122, doi: 10.1007/s13753-016-0090-9, 2016.
- Huntington, T. G.: Evidence for intensification of the global water cycle: Review and synthesis, *Journal of Hydrology*, 319, 83-95, doi: 10.1016/j.jhydrol.2005.07.003, 2006.
- 45 Karagiorgos, K., Thaler, T., Hubl, J., Maris, F., and Fuchs, S.: Multi-vulnerability analysis for flash flood risk management, *Natural Hazards*, 82, 63-87, doi: 10.1007/s11069-016-2296-y, 2016.
- Koks, E. E., de Moel, H., Aerts, J., and Bouwer, L. M.: Effect of spatial adaptation measures on flood risk: study of coastal floods in Belgium, *Regional Environmental Change*, 14, 413-425, doi: 10.1007/s10113-013-0514-7, 2014.

- Koks, E. E., Jongman, B., Husby, T. G., and Botzen, W. J. W.: Combining hazard, exposure and social vulnerability to provide lessons for flood risk management, *Environmental Science & Policy*, 47, 42-52, doi: 10.1016/j.envsci.2014.10.013, 2015.
- 5 Kunreuther, H., Meyer, R., and Michel-Kerjan, E.: Overcoming decision biases to reduce losses from natural catastrophes, *Behavioral foundations of policy*, 398-413, http://opim.wharton.upenn.edu/risk/library/C2009_HK,RJM,EMK.pdf, 2013.
- Liu, D. L., and Li, Y.: Social vulnerability of rural households to flood hazards in western mountainous regions of Henan province, China, *Natural Hazards and Earth System Sciences*, 16, 1123-1134, doi: 10.5194/nhess-16-1123-2016, 2016.
- 10 Liu, X., Zhang, Z., and McDougall, K.: Characteristic analysis of a flash flood-affected creek catchment using LiDAR-derived DEM, *Proceedings of the 19th International Congress on Modelling and Simulation (MODSIM 2011)*, 2409-2415, 2011.
- Llasat, M., López, L., Barnolas, M., and Llasat-Botija, M.: Flash-floods in Catalonia: the social perception in a context of changing vulnerability, *Advances in Geosciences*, 17, 63-70, doi: 10.5194/adgeo-5117-5163-2008, 2008.
- Marchi, L., Borga, M., Preciso, E., and Gaume, E.: Characterisation of selected extreme flash floods in Europe and implications for flood risk management, *Journal of Hydrology*, 394, 118-133, doi: 10.1016/j.jhydrol.2010.07.017, 2010.
- 15 Martín, P. J., Lafuente, M., and Faura, Ú.: Análisis de conglomerados (cluster analysis), in: *Guía Práctica de Estadística aplicada a la empresa y al marketing*, edited by: Paraninfo, E., Madrid, 180, 2015.
- Mechler, R., Bouwer, L. M., Linnerooth-Bayer, J., Hochrainer-Stigler, S., Aerts, J. C. J. H., Surminski, S., and Williges, K.: COMMENTARY: Managing unnatural disaster risk from climate extremes, *Nature Climate Change*, 4, 235-237, doi: 10.1038/nclimate2137, 2014.
- 20 Mollah, S.: Assessment of flood vulnerability at village level for Kandi block of Murshidabad district, West Bengal, *Current Science*, 110, 81-86, doi: 10.18520/cs/v18110/i18521/18581-18598, 2016.
- Morin, A. J. S., Morizot, J., Boudrias, J. S., and Madore, I.: A Multifoci Person-Centered Perspective on Workplace Affective Commitment: A Latent Profile/Factor Mixture Analysis, *Organizational Research Methods*, 14, 58-90, doi: 10.1177/1094428109356476, 2011.
- 25 Nelson, K. S., Abkowitz, M. D., and Camp, J. V.: A method for creating high resolution maps of social vulnerability in the context of environmental hazards, *Applied Geography*, 63, 89-100, doi: 10.1016/j.apgeog.2015.06.011, 2015.
- Ocio, D., Stocker, C., Eraso, A., Martinez, A., and de Galdeano, J. M. S.: Towards a reliable and cost-efficient flood risk management: the case of the Basque Country (Spain), *Natural Hazards*, 81, 617-639, doi: 10.1007/s11069-015-2099-6, 2016.
- 30 Pandey, R., and Bardsley, D. K.: Social-ecological vulnerability to climate change in the Nepali Himalaya, *Applied Geography*, 64, 74-86, doi: 10.1016/j.apgeog.2015.09.008, 2015.
- Penning-Rowsell, E., Tapsell, S., and Wilson, T.: Key policy implications of the health effects of floods, *Extreme Weather Events and Public Health Responses*, 207-223, doi: 10.1007/3-540-28862-7_20, 2005.
- Pérez, C.: *Técnicas de análisis multivariante de datos: aplicaciones con SPSS*, Pearson Educación, Madrid, 672 pp., 2004.
- 35 Rogelis, M. C., Werner, M., Obregon, N., and Wright, N.: Regional prioritisation of flood risk in mountainous areas, *Natural Hazards and Earth System Sciences*, 16, 833-853, doi: 10.5194/nhess-16-833-2016, 2016.
- Ruin, I., Creutin, J.-D., Anquetin, S., Grunfest, E., and Lutoff, C.: Human vulnerability to flash floods: Addressing physical exposure and behavioural questions, *Flood risk management: research and practice proceedings of the European Conference on Flood Risk Management Research into Practice (FLOODrisk 2008)*, Oxford, UK, 30 September-2 October 2008, 1005-1012, doi: 10.1201/9780203883020.ch116, 2009.
- 40 Sarstedt, M., and Mooi, E.: *A Concise Guide to Market Research: The Process, Data, and Methods Using IBM SPSS Statistics*. Springer (Ed.), Springer Texts in Business and Economics, Springer-Verlag Berlin Heidelberg, <http://link.springer.com/book/10.1007%2F978-3-642-12541-6>, 2014.
- Siebeneck, L., Arlikatti, S., and Andrew, S. A.: Using provincial baseline indicators to model geographic variations of disaster resilience in Thailand, *Natural Hazards*, 79, 955-975, doi: 10.1007/s11069-015-1886-4, 2015.
- 45 Tapsell, S. M., Penning-Rowsell, E. C., Tunstall, S. M., and Wilson, T. L.: Vulnerability to flooding: health and social dimensions, *Philosophical Transactions of the Royal Society of London Series a-Mathematical Physical and Engineering Sciences*, 360, 1511-1525, doi: 10.1098/rsta.2002.1013, 2002.
- Terti, G., Ruin, I., Anquetin, S., and Gourley, J. J.: Dynamic vulnerability factors for impact-based flash flood prediction, *Natural Hazards*, 79, 1481-1497, doi: 10.1007/s11069-015-1910-8, 2015.

- Thieken, A. H., Mariani, S., Longfield, S., and Vanneuville, W.: Preface: Flood resilient communities - managing the consequences of flooding, *Natural Hazards and Earth System Sciences*, 14, 33-39, doi: 10.5194/nhess-14-33-2014, 2014.
- 5 Turner, B. L., Kasperson, R. E., Matson, P. A., McCarthy, J. J., Corell, R. W., Christensen, L., Eckley, N., Kasperson, J. X., Luers, A., Martello, M. L., Polsky, C., Pulsipher, A., and Schiller, A.: A framework for vulnerability analysis in sustainability science, *Proceedings of the National Academy of Sciences of the United States of America*, 100, 8074-8079, doi: 10.1073/pnas.1231335100, 2003.
- UNISDR: Sendai Framework for Disaster Risk Reduction 2015-2030, III UN World Conference on Disaster Risk Reduction, Sendai, Japan, 32, http://www.unisdr.org/files/43291_sendaiframeworkfordrren.pdf, 2015.
- 10 USACE: Geospatial Hydrologic Modeling Extension HEC-GeoHMS (Version 10.0), Hydrologic Engineering Center, Davis, Carolina, http://www.hec.usace.army.mil/software/hec-geohms/documentation/HEC-GeoHMS_Users_Manual_10.1.pdf, 2013.
- Vermunt, J. K., and Magidson, J.: Latent class cluster analysis, in: *Applied latent class analysis*, edited by: Hagenaars, J. A., and McCutcheon, A. L., Cambridge University Press, New York, 89-106, doi: 10.1017/CBO9780511499531, 2002.
- 15 Weber, S., Sadoff, N., Zell, E., and de Sherbinin, A.: Policy-relevant indicators for mapping the vulnerability of urban populations to extreme heat events: A case study of Philadelphia, *Applied Geography*, 63, 231-243, doi: 10.1016/j.apgeog.2015.07.006, 2015.
- Wilhelmi, O. V., and Morss, R. E.: Integrated analysis of societal vulnerability in an extreme precipitation event: A Fort Collins case study, *Environmental Science & Policy*, 26, 49-62, doi: 10.1016/j.envsci.2012.07.005, 2013.
- 20 Zelenakova, M., Ganova, L., Purcz, P., and Satrapa, L.: Methodology of flood risk assessment from flash floods based on hazard and vulnerability of the river basin, *Natural Hazards*, 79, 2055-2071, doi: 10.1007/s11069-015-1945-x, 2015.
- Zhou, Y., Liu, Y. S., Wu, W. X., and Li, N.: Integrated risk assessment of multi-hazards in China, *Natural Hazards*, 78, 257-280, doi: 10.1007/s11069-015-1713-y, 2015.