



Multidisciplinary Approach to Rainfall-Triggered Rockfalls: the Case Study of the Disaster of the Ancient Hydrothermal Sclafani Spa (Madonie Mts., Northern-Central Sicily, Italy) in 1851

5 Antonio Contino^{1,2}, Patrizia Bova², Giuseppe Esposito^{1,2}, Ignazio Giuffrè² and Salvatore Monteleone¹

¹Dipartimento di Scienze della Terra e del Mare (DiSTeM), University of Palermo, Via Archirafi 20/22, 90123 Palermo, Italy

²Accademia Mediterranea Euracea di Scienze, Lettere e Arti (AMESLA), Via Gregorio Ugdulena 62, 90018 Termini Imerese (Palermo), Italy.

Correspondence to: A. Contino (ntncontino@gmail.com)

10 **Abstract.** In 1851, the region of Sicily experienced many rainstorm-induced landslides. On 13 March 1851, a rainstorm brought about a severe rockfall disaster near the small town of Sclafani (Madonie Mountains, northern-central Sicily, Italy). Rocks detached from the carbonate crest of Mt. Sclafani (813 m above sea level) fell downslope, causing the collapse of the ancient hydrothermal spa (about 430 m above sea level) and burying it under their fragments. Fortunately, the event did not cause injuries or victims. Given its geological, geomorphological and
15 structural features, the calcareous-dolomitic and carbonate-siliciclastic relief of Mt. Sclafani is extremely prone to landsliding.

This study combines the findings from detailed geological and geomorphological field surveys and from a critical review of documentary data. A thorough analysis of documentary sources and historical maps made it possible to identify the location (previously unknown) of the ancient spa. The rockfall dynamics was traced back by comparing
20 field reconnaissance data and documentary sources. The reconstruction of the 1851 event can help gain greater insight into the rockfall susceptibility of Mt. Sclafani, improve future land-use planning, safeguard thermal springs, and reduce the occurrence of similar disasters in this area.

25 **Keywords:** rockfall, 1851 rainstorm, thermal springs, ancient Sclafani spa, Madonie Mountains, region of Sicily.

1 Introduction

An official ten-year report (1991-2000) of world disasters shows that avalanches, landslides and floods account for 42% of all natural disasters. These events are responsible for 35% of the estimated damage (US \$ 786,705.6 millions at 2000 prices) of all natural disasters (Walter, 2001).

30 Gravity-induced hydrogeomorphic movements, called landslides (WP/WLI, 1990), depend on a combination of multiple controlling factors (Santini et al., 2009): i) predisposing factors (e.g. lithology, morphology, tectonics, weathering); ii) triggering factors (e.g. intensity, duration and spatial distribution of rainfall, earthquakes, changes in soil cover); and iii) accelerating factors (e.g. human activities altering the natural stability of slopes).

35 Rockfalls may be regarded as relatively “minor” landslides, since they are confined to the removal and fast downslope movement of distinct fragments (of different size) of fresh rock, usually detached from a steep rock wall or cliff (Carson and Kirkby, 1972; Selby, 1982).

The types of rock movements may be: toppling, falling, bouncing, rolling and sliding, accompanied by the



fragmentation of the rock mass upon its impact on the slope (Erismann and Abele, 2001).

40 A large-scale mass movement of rock material is defined as rock avalanche, rockfall avalanche or rockslide (e. g. Evans and Hungr, 1993; Cruden and Varnes, 1996; Erismann and Abele, 2001; Guzzetti et al., 2004; Hungr et al., 2014).

In the scientific literature, rockfalls are reported to have various causal factors. However, in many cases, they originate from a combination of topographic, geological and climatological factors, as well as of gravitational forces and time (Dorren, 2003 and references therein).

45 The study discussed in this paper focuses on the rainfall-triggered rockfall that hit the spa of the small town of Sclafani Bagni (called Sclafani before 1953), in the watershed of the northern Imera River (Madonie Mts.).

The disaster was associated with a rainstorm that took place in the region of Sicily (central Mediterranean) in 1851. The collected documentary data concern the rainstorm of 12-13 March 1851, which struck the northern-central sector of the Island, i.e. the Madonie Mts. The intense rainfall triggered many landslides. After the maximum intensity of 50 rainfall, recorded on 13 March 1851, a rockfall ravaged the Sclafani spa and its infrastructure. This event is very seldom quoted in studies and databases about Sicilian landslides. Only one publication specifically refers to the Sclafani rockfall in 1851 (Aureli et al., 2008). The history of the rockfall hitting the ancient Sclafani spa, its causes and consequences have never been investigated until now.

The data presented in this paper provide a detailed reconstruction of the Sclafani rockfall, based on thorough 55 geological and geomorphological surveys, collection of historical records and careful cross-checks with related sources.

2 Materials and Methods

60 2.1 The Rainstorm of 1851

On 11 March 1851, a WNW windstorm battered Sicily. The storm moved approximately ESE (Tacchini, 1868), unleashing catastrophic floods and severe sea-storms on 12-13 March.

The extreme weather event affected the northern region and its central and western sectors almost entirely (Fig. 1) and was accompanied by heavy rain (Anonymous, 1847-59; Anonymous, 1851, Anonymous, 1851-52; Benso et al., 65 1851; Di Marzo, 1859; Possenti, 1865; Aureli et al., 2008 and references therein). This torrential rain triggered a large number of shallow landslides in mountainous or hilly areas and floods in coastal plains, producing substantial economic losses. In many places, numerous roads (some of which of strategic relevance) were damaged or blocked. A severe flood struck the city of Palermo and its outskirts (12-13 March 1851), with huge economic damage but fortunately no casualties (Anonymous, 1851; Anonymous, 1851-52; Mortillaro, 1887). The high water level reached 70 1.60 m in the urban area of Palermo (Tacchini, 1868; Cusimano et al., 1989). Difficulties of drainage caused extensive coastal lagoons to persist for many days (e.g. in the Palermo plain, see Anonymous, 1851-52; Mortillaro,



1887). At Termini Imerese a severe sea-storm provoked the sinking of some boats and the death of eight fishermen (Anonymous, 1851-52).

On 12-13 March 1851, the only official rain gauge station in Sicily (Osservatorio Astronomico di Palermo, OAP, 78.5 m above sea level) measured 140 mm in 48 h (see Tacchini, 1868) (90.6% of the total monthly average, i.e. 154.43 mm; 18% of the total yearly average). Unfortunately, as the hourly records of 1851 disappeared during the insurrection of 1860, peak rainfall was not accurately determined. However, rainfall had its peak intensity on 13 March 1851 (69 mm in 14 h, from 8:00 to 22:00, see Tacchini, 1868). Another non-official rain gauge station (Istituto Nautico di Palermo, INP, 21.5 m a.s.l., see Tacchini, 1868) recorded 90.9 mm in 24 h (38% of the total monthly average; 11.6% of the total yearly average). The monthly rainfall of March 1851 (239.03 mm), recorded at the NIP station, was the maximum of the month in the period from 1827 to 1866 (see Tacchini, 1868). In contrast, the monthly rainfall of March 1851, recorded by the OAP station, was 154.43 mm (see Tacchini, 1868). The INP, located by the sea (wharf of Palermo) at the foot of Mt. Pellegrino (600 m a.s.l.), reported higher precipitation values than the OAP; this finding is almost certainly due to the effect of local orography (see Tacchini, 1868).

Most of the landslide-induced damage occurred in central-northern Sicily (Madonie Mts., northern Imera and Torto river basins). The small towns of Montemaggiore (now Montemaggiore Belsito), Caltavuturo (Anonymous, 1847-59) and the ancient Sclafani spa suffered most of the damage (core disaster area). In the south-western Sicily (Platani basin), the picturesque small town of Sutera suffered the destructive effects of some rock falls (Benso et al., 1851). The winter snowstorm and this torrential rain caused the drying-up of trees, the devastation of cropland, a prolonged food scarcity and economic losses in many production activities (Pitré, 1871).

Prolonged torrential rains felled plants and trees, uprooted grapevines, initiated landslides and soil erosion, while streams spilled over their banks, covering grassland and grazing land with sand, gravel and rocks (Minà Palumbo, 1854). The perceived exceptionality of the event, recalled as “the deluge”, was handed down from generation to generation through a dialectal folk song of Caltavuturo (Pitré, 1871). The locals were so impressed by the event that they recollected as many as “forty days” of torrential rain, similarly to the Biblical Great Flood. They also defined the event as “the scourge of God” (Giornale Ufficiale di Sicilia, 1851), interpreting it as a divine punishment requiring prayers for the intercession of the Virgin Mary (Pitré, 1871).

Based on a general estimation, at least 26 buildings were destroyed, two bridges were damaged, eight fishermen drowned, cropland and crops were badly damaged (especially in the Termini Imerese and Cefalù districts, see Benso et al., 1851). King Ferdinand II of Bourbon donated money to the people hit by the landslides and floods: 30,000 ducats, 12,000 of which only in the city of Palermo (Anonymous, 1851).

The rainstorm of 1851 may be classified among the Damaging Hydrogeological Events (DHE, see Petrucci and Polemio, 2003) due to its catastrophic effects and among the Very Large Catastrophic Events (VLCE, see Barriendos and Rodrigo, 2006) due to its extension to four or more basins.

1850-51 were rainy years (Tacchini, 1868). After a dry summer, the autumn of 1850 was extremely rainy. The



monthly rainfall of September 1850 (138.57 mm) was the peak value of the month, in the period from 1827 to 1866, recorded by the non-official INP station (Tacchini, 1868). The 1850-51 winter, snowy and rainy, was followed by scarce rainfall in spring. This fact had phenological effects: insufficient wheat and olives production and extraordinary blooming of fruit-trees (e. g. apricot trees) and a species of Poaceae (*Ampelodesmos mauritanicum*), a typical example of Mediterranean bunchgrass used for making strings and ropes, followed by limited production of foliage. In the summer, the anomalous proliferation of harmful *Coleoptera* destroyed many vineyards (Minà Palumbo, 1854).

2.2 Topographic, Geological and Tectonic Setting

115 Sclafani Bagni is a picturesque town of medieval age, just as its castle rising at the top of its slope (813 m a.s.l.); it is located in central-northern Sicily (Madonie Mts.), about 80 km from Palermo.

In the past, its three hot sulfur springs, lying at the foot of Mt. Sclafani and used for thermal balneology, were among the most famous in Sicily (Vinaj and Pinali, 1916-1923).

The history of the thermal baths of Sclafani is divided in three phases. An original heterogeneous group of buildings was used for bathing and lodging (the so-called “thermal bath houses”). Some nearby houses were used for additional lodging (the so-called “Giambelluca’s houses”, see Cacciatore, 1828; Cappa, 1847). In the years 1846-50, the first thermal establishment (the so-called “ancient Sclafani spa”), with two-floors and 113 beds (Cappa, 1847), was built on the orders of the Hispanic nobleman Giuseppe Álvarez de Toledo, Duke of Ferrandina, Count of Sclafani, which included the original “thermal bath houses”, was destroyed by the catastrophic rockfall of 1851 (see Di Marzo, 1859).

120 After the disaster, the same Count of Sclafani, commissioned the construction (1856-57) of a new one-floor thermal establishment (the so-called “Masseria Bagni” i.e. “thermal bath farm”), in a site near the previous one, at an elevation of about 402 m a.s.l. The new thermal establishment, a unique example in the Madonie region, featuring a new aqueduct and about 200 beds (Marieni, 1870) and covering an area of 1960 m², was totally abandoned after 1985.

130 The Madonie are the tallest mountains (1,979 m a.s.l. at Pizzo Carbonara) of the Sicilian northern chain. These reliefs, a segment of the Sicilian Maghrebic chain, consist of stacked tectonic units, which originate from the deformation of distinct ancient paleogeographic domains, emplaced in Neogene times. The homonymous regional natural park was established (1989) in the Madonie Mts., given their high environmental value. The study area covers 82,7 km² and has an average altitude of 600 m a.s.l. and a maximum altitude of 1,794 m a.s.l. at Monte dei Cervi.

135 The main structure of the western Madonie Mts. is a Meso-Cenozoic sequence (Imerese and Sicilidi domains), covered by syntectonic deposits (Catalano et al., 2011b, see Fig. 2).

The Imerese units derive from the deformation of a carbonate and carbonate-siliciclastic deep-sea succession (basin-slope, from the upper Triassic to the Oligocene, thickness 1,200-1,400 m, e. g. Basilone and Lo Cicero, 2009).

In Mt. Sclafani, the Imerese succession outcrops with a thickness of 600-900m and dips 10° to 80° obliquely to the



140 slope. From bottom to top, the succession is made up of (Fig. 3): 1. grey marly limestones, thin-bedded and with chert
nodules (Scillato fm., upper Triassic, exposed with a thickness of 100-130m); 2. four main bodies of massive
white dolerudites, resedimented and alternating with thin-graded and -laminated dolerites (Fanusi fm., lower
Lias, thickness 230-250m); 3. thin-bedded variegated radiolarites; siliceous argillites with typical conjugate cleavage;
toward base, marlstones and calcilitites body (thickness 10-20m, 3a) sandwiched (radiolarian member, Crisanti fm.,
145 middle Lias-Portlandian, thickness 150-250m); 4. resedimented grey calcareous breccias (Ellipsactinia breccias
member, Portlandian-lower Cretaceous, Crisanti fm., thickness 50-80m); 5. reddish marls, jaspers, spiculites,
interbedded with grey calcarenites (marly-spiculitic member, lower Cretaceous, Crisanti fm., thickness 40-100m); 6.
resedimented grey calcareous breccias (Rudistid breccias member, upper Cretaceous, Crisanti fm., thickness 20-50m);
7. marlstones and marly limestones (Caltavuturo fm., Eocene-lower Oligocene, thickness 100-150m); 8. pelites and
150 quartzarenites (Numidian Flysch, upper Oligocene-lower Miocene).

The basinal marine succession of the Sicilidi units (upper Cretaceous-lower Oligocene), detached from its original
bedrock and tectonically overlying the Numidian flysch, consists of limbs of marly clays and marly limestones.

The structural edifice is unconformably overlain by a syntectonic wedge-top basin, filled with terrigenous, evaporitic
and clastic-carbonate rocks (of Serravallian-Pliocene age). The most recent deposits include a local debris cover,
155 colluvia and landslide deposits (Holocene).

During the Miocene and Pleistocene interval, two main tectonic events took place (Catalano et al., 2000): I) a first
thrust system (currently SW-dipping), consisting in a quasi-horizontal, NE-SW-trending maximum compression
(shallow-seated structures, middle Miocene); II) a more recent strike-slip and/or transpressional fault system,
consisting in an N-S-trending maximum compression (deep-seated structures, after the beginning of the Tortonian).

160 The data about the tectonic architecture at the deep subsurface of the study area and nearby areas were obtained by
interpreting the northern portion of the SI.RI.PRO (“Sismica a Riflessione PROfonda”, deep seismic reflection)
borehole-calibrated seismic profile (Accaino et al., 2011; Catalano et al., 2013).

The upper portion of the SI.RI.PRO (Fig. 4) exhibits a stack of N-dipping, imbricated thrust sheets, affecting the thin
basinal successions of Meso-Cenozoic age (Imerese unit, Numidian flysch and Sicilidi); the latter were emplaced
165 during compressional event I. The Imerese thrust sheets appear to have been cut by deep-seated high-angle faults
(generated at a deeper structural level) and then folded and lifted, giving rise to N-dipping features (i.e. backthrusts).

During the Pleistocene, NW-SE- and NE-SW-trending normal faults, correlated with an extensional tectonic event of
a high angle, involved the study area. Finally, the occurrence of N-S- and E-W-oriented transtensional faults is
consistent with a quasi-vertical maximum compression.

170 In the study area, N-S high-angle (about 70°) faults show an approximate rake of 60°. Kinematic indicators suggest a
dextral transtensional movement.

2.3 Geomorphological and Morphostructural Setting



175 The geomorphological setting of the study area shows two different landscapes, each with well-defined landforms,
depending on outcropping lithotypes and dominant morphogenetic processes: i) carbonate and carbonate-siliciclastic,
with more or less steep slopes and numerous karst and morphoselection features; (ii) clayey-marly with uneven and
gently inclined slopes (<20°), usually affected by shallow gravitational movements (landslides). Alternating
lithotypes with different erodibility and tectonic features justify the development of structural morphologies (cuestas,
hogbacks and flatirons). Locally, NE-trending scarps display deep-seated gravitational deformations. N-S- and NE-
180 SW-trending faults/fault lines, whose height was increased by selective erosion, dominate the landscape. On the ridge
of the mountain (Cervi-Rocca di Sciara-Sclafani Anticlinorium, hereinafter CRSSA), the terrigenous covers
(Numidian flysch) have been gradually dismantled since the salinity crisis of the Messinian, exposing calcareous-
dolomitic and/or calcareous-siliciclastic levels to a different extent. The Plio-Quaternary uplift enhanced this process
(Contino et al., 2015).

185 Fieldwork of Mt. Sclafani began with detailed geomorphological reconnaissance studies and mapping (original scale
1:10,000; area: 2.2 km², Fig. 5), based on the guidelines proposed by the Servizio Geologico Italiano (Gruppo di
Lavoro per la Cartografia Geomorfologica, 1994).

Mt. Sclafani is a morphostructural high of the large CRSSA, markedly dissected by the recent faults with the highest
angle. This typical isolated relief with a pyramidal shape and a triangular base is bordered on its E and W sides by an
190 N-S-trending normal fault/fault line scarp. Its NW slope is bounded by a fault line scarp that was interpreted in
different ways (see discussion). Mt. Sclafani consists of three S-dipping slopes, separated by less steep slopes. Owing
to selective erosion, this morphology corresponds to carbonate and siliciclastic levels, respectively. These levels give
rise to fall-prone hard-on-soft landforms (see Fig. 3):

- Lower Cliff: about 230-10m high, calcareous-dolomitic (Scillato and Fanusi fms.); it shows selective erosion steps,
195 with small caves and protruding ledges and is locally shaped by arcuate rockfall niches;
- Lower Talus Slope: roughly 240-40m high, siliceous and subordinately calcareous-marly (radiolarian member,
Crisanti fm.), with morphoselection ledges;
- Middle Cliff: approximately 30-20m high, calcareous (Ellipsactinia breccias member, Crisanti fm.) and crowned by
the ruins of the medieval castle; its steep undercut cliffs are rockfall-prone; this is the source area of the 1851 event
200 (height approximately 730-750m a.s.l.);
- Middle Talus Slope: marly-calcareous (marly-spiculitic member, Crisanti fm.);
- Upper Cliff: calcareous (Rudistid breccias member, Crisanti fm.); also these steep undercut scarps are rockfall-
prone;
- Upper Talus Slope: calcareous-marly (Caltavuturo fm.) and terrigenous (Numidian flysch).

205

2.4 Climate, Hydrography and Hydrogeology

Sicily has a typical Mediterranean climate with hot summers, drought and mild winters. By contrast, the Madonie



Mts. have a cold climate in winter (December to February) and relatively mild summers. Average yearly temperature is roughly 14°C, whereas average yearly precipitation is about 800 mm. Precipitation is unevenly distributed over the different seasons. 85% of yearly precipitation is concentrated in September and April, whereas in summer (June-August) precipitation drops to less than 4% (Drago, 2002).

A relative peak occurs in September or October. On the highest reliefs (more than 1,000m a.s.l.), the yearly temperature excursion is equal to 10°C, while it decreases to 5-6°C in coastal areas.

The northern Imera river (29.10km; basinal area about 342km²; maximum elevation: 1,869m a.s.l.) and its main left tributary, the Salito river (17km), drain the western sector of the Madonie Mts. At Scillato (basinal area 105km²; hydrometric zero: 236m a.s.l., records available from 1976 to 1997, some missing data), the yearly average volume is 23.37Mm³ and the yearly base flow volume is 7.83Mm³. The maximum discharge (241.04m³ s⁻¹) was measured during the severe rainstorm of 21 January 1981 (SOGESID, 2007).

The northern Imera river valley is open on its northern side, on the windward side of the northern Sicilian ridge; therefore, it is strongly exposed to the influence of the sea.

The monthly value of real evapotranspiration (ETR) was estimated with Thornthwaite's formula at 300 mm, based on the soil water balance for a field capacity of 20mm. Average surface discharge values (Ds) account for 24% of yearly precipitation (P) (see Drago, 2002)

The main aquifers of the Madonie Mts. are hosted in the calcareous-dolomitic (Scillato and Fanusi fms.) and calcareous (Crisanti fm.) rocks of the Imerese succession. The hydrostratigraphy of the Imerese succession, its structural geometries (ramps, faults and discontinuities) and karst landforms (of short length) govern groundwater flow.

The Low-enthalpy thermo-mineral springs of Sclafani (33°-35°C; total flow value 6,7 l s⁻¹, e. g. Waring, 1965; Grassa et al., 2006 and references therein) are the superficial manifestation of a faults-controlled geothermal system hosted in multilayered aquifers (carbonate and carbonate-siliciclastic units), locally confined beneath the terrigenous covers (Numidian Flysch).

2.5 Documentary Evidence

Written archives offer a large spectrum and an adequate resolution of evidence on past weather extremes and related natural disasters. Documentary evidence consists of different types of data: references; central and local public authorities reports and acts, engineers and experts synchronous relationships; ancient (Salemi, 1833; Massa, 1846-50) and recent series of maps (1930-2016), including satellite ones; synchronous engravings and drawings.

The documentary datasets are structured as follows: the selected evidences previous to the disaster of the ancient hydrothermal Sclafani spa in 1851 (4 original documentary sources are found in Supplementary Information, Table S1) and relatively to the disaster (22 original documentary sources are found in Supplementary Information, Table



S2), are collected in the first and second dataset, respectively. The evidences of the rainstorm of March 1851 are included in the third dataset (9 original documentary sources are found in Supplementary Information, Table S3).

A significant legacy of documentary data, related to Sclafani event, was collected in the pandects of Bourbon administration in Palermo (Anonymous, 1849-60; Anonymous, 1847-59). The most important unpublished collection
245 of synchronous documents (pandects), related to the event of March 1851, is kept in the State Archive of Palermo (Anonymous, 1847-59; Anonymous, 1849-60; Anonymous, 1851-52).

The collected historical documentary data have been submitted to an essential critical analysis (homogenisation, cross-checking, validation and interpretation).

250 **3 Results and Discussion**

Geological and geomorphological mapping, field surveys and a critical analysis of documentary data have considerably improved the understanding of the rockfall event in the study area. Unfortunately, no detailed eyewitness reports of the event are available.

In the Madonie Mts., very active infiltration processes, as well as weather and erosion agents, are significantly
255 altering the bedrock, especially along structural discontinuities. The spacing between discontinuities has led to the development of unstable rock masses - which are prone to falling, especially during maximum intensity and/or duration of precipitation and under moisture-saturated freeze-thaw conditions - and to the formation of alluvial fans and talus deposits downslope (e. g. Scheidegger, 1975; Gardner, 1983; Whalley, 1984).

Given its geological, geomorphological and structural features, the calcareous-dolomitic and carbonate-siliciclastic
260 relief of Mt. Sclafani is extremely prone to rockfalls.

Regional tectonics plays a key role. In previous studies, the NW slope of Mt. Sclafani was interpreted as a tectonic line (Sclafani Fault, SF) with extensional kinematics (Agnesi et al., 2004; Catalano et al., b; Gugliotta and Gasparo Morticelli, 2012), or as an indefinite fault/fault line scarp (Di Maggio et al., 1999). By contrast, in the study reported
265 in this paper, the NW slope of Mt. Sclafani was interpreted as a transpressional fault line, juxtaposing lithotypes with different resistance to exogenous processes. The topographic expression of this transpressional line (Transpressional Sclafani Fault, hereinafter TSF), locally associated with normal faults, is marked by an abrupt scarp. This scarp, of arcuate shape and variable height, was shaped by the progressive collapse/retreat of the wall and by the incision of small fluviokarst canyons.

The nearby Rocca di Sciara Anticline (RSA), one of the structural highs of the Cervi-Rocca Sciara-Sclafani
270 Anticlinorium (CRSSA), is cut by an SSE-dipping fault (Transpressional Cervi Fault, hereinafter TCF) with a high angle (roughly 70°) and an approximate rake of 15° to 45°. Kinematic indicators infer a sinistral transpressional movement (Gugliotta and Gasparo Morticelli, 2012).

Therefore, in this study (see structural sketch map in Fig. 2), the TSF was interpreted as the SW prolongation of the TCF. In agreement with these data, the SI.RI.PRO crustal seismic profile displays the buried Imerese tectonic high



275 with N-dipping thrusts, which occurred in response to the basement thrust and associated uplift. The deep crustal
uplift was ascribed to the Pliocene-lower Pleistocene (Catalano et al., 2013). The general uplift of this sector of the
Madonie Mts. has accelerated the effects of exogenous processes and, consequently, gravitational movements.
In Mt. Sclafani, carbonate rock masses are segmented by discontinuity planes, intersected by a number of major
vertical joints, which may increase the likelihood of future disasters.

280 Unfortunately, no published data are available about the level of fracturing of the bedrock and/or joints in the slopes
of the study area, which are extremely steep and locally inaccessible or accessible only with mountaineering
techniques. Discontinuities in the carbonate rock have been altered by protracted exposure to rainwater. At the
surface, the carbonate rock, divided into blocks, has given rise to ruiniform reliefs and trapezoidal spires.
During intense rainstorms (likely to induce water saturation and increase water pressure from precipitation-induced
285 seepage), surface waters erode the weathered interspace materials.
Rockfalls associated with diffuse erosion and detrital slips occur along the edge of the carbonate layers that lie at the
bottom and top of the site. These phenomena cause the toppling and rolling of carbonate blocks and rockfalls,
especially as a result of intense rainstorms and under moisture-saturated freeze-thaw conditions. The same
mechanism has been observed to be at work throughout the area.

290 A detailed analysis of documentary evidence (including historical maps) made it possible to identify the exact
position of the ancient Sclafani spa, which collapsed owing to and was buried by the 1851 rockfall.
In the 18th and early 19th centuries, the “thermal bath houses” were located at an elevation of about 430 m a.s.l., on a
flat land (Mongitore 1743), near a small NW-SE-oriented valley, at the foot of the NW slope of Mt. Sclafani
(Cacciatore, 1828). Before the event, the hydrothermal waters gushed out from the talus deposits at a distance of 30 m
295 from the foot of a steep rock slope. An underground aqueduct conveyed water from the hot springs to the “thermal
bath houses” (Cacciatore, 1828). The first improvements of the Sclafani baths date from between the end of the 18th
century and the beginnings of the 19th century (1792-99; 1825-27, see Campisi, 2015).
The ancient maps of the land-surveyors, Gaetano Salemi (1833) and Giuseppe Massa (1846-50), respectively, show
the “thermal bath houses” and the “ancient Sclafani spa”. The map of Salemi (Fig. 6), despite his naiveness, clearly
300 shows the prominent spur at the base (Lower Cliff) of Mt. Sclafani, the position of the “thermal bath houses” and
Giambelluca’s houses, the thermal pond (“Gorga”) and the four water mills. The map of Massa (Fig. 7), clearly shows
the location of the “ancient Sclafani spa” at the foot of the slope of Mt. Sclafani and the mule track connecting the
small town with the thermal establishment.
The site of the ancient spa at the footslope of Mt. Sclafani is clearly visible in the pioneering geological and
305 hydrogeological sketch (based on Bourbon maps) drawn by Felice Giordano (Fig. 8), a mining engineer who worked
in Sicily in 1860 (Daubrée, 1887). Furthermore, the 1847 very detailed engraving (Cappa, 1847), portraying the
“ancient Sclafani spa” prior to the disaster, shows a site with a gentle topographic slope; this is due, in part, to the
expansion work carried out at the time at the foot of the slope (Fig. 9).



310 The rockfalls of the 1851, transformed entirely the landscape of the northern footslope of Mt. Sclafani (Fig. 10), and
the position of the hydrothermal springs. Today, the site displays two mounds of rocky material
(doloarenites/dolorudites, Ellipsactinia breccias, radiolarites, calcilutites), longitudinally sorted, with large rocks and
masses (the largest ones are approximately equidimensional, 4 m in size), at the foot of the Lower Cliff and a marked
vegetational difference on the rockfall debris as against the surrounding areas. The morphological change took place
on 13 March 1851 after the maximum intensity of rainfall, when the landslide ravaged the “ancient Sclafani
315 hydrothermal spa”. This event is very consistent with the data recorded by the two rain gauge stations of the city of
Palermo (OAP and INP), indicating a rainfall peak on the same day.

The pandects of the Bourbon administrative office (Intendenza) of Palermo (Anonymous, 1847-59), documented that
the extraordinary torrential rains (the peak) battered the western Madonie on the night of 13 March 1851 streams
swelled, provoking damages to structures (e.g. the aqueduct of Caltavuturo). Because of the landslides, the water
spring called “Xhanimirici” (location unknown) disappeared and the inhabitants of Sclafani remained without
320 drinking water (Anonymous, 1849-60).

Owing to an obvious misprint, Di Marzo (1859) reported this disaster on 19 March 1851 and this erroneous date was
submissively repeated by many subsequent researchers.

In the synchronous documentary sources the landslide of Sclafani was called “scoscendimento”. Stoppani (1866)
325 defined it as a “landslide of formidable proportions”, with catastrophic effects. In the Italian geological literature, the
term “crollo di roccia” (rock fall) can be found only in the 19th century (see Almagià, 1910), but Gortani (1948) still
uses “scoscendimento” or “rovina” (collapse).

The disaster involved the catastrophic falling of carbonate rocks from the crest of the middle cliff (Ellipsactinia
breccias), crowned by the ruins of a medieval castle. The detached rocks slid along the slope, removing undisturbed
330 rock from ledges or talus areas. The debris from the rockfall continued their movement along the lower slope, hitting
the edge of the lower cliff. The material, coming down along transport channels, fell downslope and reached the spa
that consequently collapsed. The large building of the ancient spa, the access road, the nearby Giambelluca’s houses,
the banks of the thermal pond, the water mills and a segment of a mule track were completely destroyed and/or buried
under rock fragments. Conversely, the hot springs were unaffected, keeping the same chemical property and the same
335 discharge (Di Marzo, 1859). Fortunately, the disaster did not cause injuries or deaths because the thermal bathing
season would start on the following 20 April (Vinaj and Pinali, 1916-1923). According to Jervis (1868), the event was
particularly disastrous owing to the unfavourable choice of the site of the ancient thermal spa. The zone of
accumulation of displaced material had an estimated area of 63,403 m².

The catastrophic event was preceded by some premonitory signs around one year before. A resolution by the
340 municipal council (so-called “decurionato”) of Sclafani, adopted on 1 April 1850 (Anonymous, 1849-60) documents
that a landslide had damaged the mule track connecting the small town with the thermal establishment. After the



disaster, the source area continued to show signs of instability. The above-mentioned mule track was again damaged in January 1854 (based on the records, a detached rock blocked the passage).

345 In the 20th century, no rockfalls occurred during the serious weather event of 21-25 February 1931, but its effects may have been mitigated by the removal of part of the rocks (near the source area of the 1851 event) during the construction of the road of access to the built-up centre, opened in 1930 (Termotto, 2009). The severe weather events that occurred on 21 January 1981, 10-12 January 1987, 23-24 November 1991 and 13-14 November 1996 are likely to have reactivated landslides in Mt. Sclafani. During the 1990s, to mitigate the effects of these events, the site was provided with a rockshed, as well as with nets and anchoring systems. Recently, eight active rockfall areas (one in the
350 source area of the 1851 event) have been inventoried at Sclafani (Regione Siciliana, 2004).

4 Conclusions

Detailed field geological and geomorphological surveys in the study area highlighted multiple slope instabilities, especially at shallow depth, such as the emblematic rockfall of 1851.

355 This study represents the starting point for a future Sicilian rockfall inventory database, a precious tool to shed more light onto these catastrophic events. The dynamics of the catastrophic rockfall involving the ancient Sclafani spa was reconstructed by conducting a multidisciplinary study. The study combined thorough geological and geomorphological studies with the interpretation of aerial and satellite photos and was integrated with the analysis of ancient and modern maps and a critical assessment of historical records.

360 The relevance of historical data in assessing the rockfall disaster was demonstrated by the investigation conducted as part of this case study. Detailed documentary data are crucial to identifying the mechanisms triggering rockfalls, quantifying the susceptibility of the various slopes to rockfalls and developing magnitude-frequency relationships (Porter and Orombelli, 1980; Wiczorek and Jäger, 1996). Often, documentary data are the only evidence of the socio-economic impacts of major disasters, such as rainstorms, severe floods and landslides, in periods preceding the
365 deployment of instrumental monitoring networks (beginning in 1921 in Sicily).

The comparison of ancient and modern maps made it possible to determine the exact position of the ancient Sclafani spa, of paramount importance to carefully reconstruct the rockfall of 13 March 1851. The collected data are beginning to provide a first picture of this catastrophic event.

370 The main causes of the rockfall disaster may be attributed to a number of intrinsic and extrinsic factors: geological, structural, geomorphological and, in particular, meteorological (extreme precipitation event). Unfortunately, the time, place and frequency of occurrence of rockfall disasters, as well as their scale, are unpredictable (Zellmer, 1987). The Sclafani rockfall of 1851 was an exceptional event that can hardly be framed in statistical terms.

In the 1986-2015 period, global warming induced by climate change expressed itself in different ways, including an increase of extreme precipitation and of catastrophic geomorphological processes (Katz and Brown, 1992;
375 Rosenzweig et al., 2007; Sillmann and Roeckner, 2008). The higher frequency and intensity of rainfall activated



landslides and/or debris flows (Evans and Clague, 1994; Keefer et al., 1987). High-impact events are expected to be more frequent and intense in the future, as a consequence of continuing global warming (Krautblatter and Moser, 2006; Field et al., 2012). Therefore, given the intensification of extreme weather events, the risk of recurrence of a catastrophic event, like the one of the ancient Sclafani spa, is always impending.

380 Future investigations based on direct and/or indirect methods (structural and geomechanical reconnaissance, seismic and/or microseismic monitoring, surveys via digital high-resolution photos, terrestrial and/or aerial laser scanning) may yield relatively new data to improve the assessment of rockfall susceptibility and adequately plan and manage disaster prevention and mitigation actions in the Mt. Sclafani area (especially to the safeguard the site of the thermal springs, which are particularly vulnerable). Unquestionably, a detailed study of past events is the starting point of any
385 conceptual plan to mitigate rockfalls, as well as to design and develop systems for rock slope stabilisation. Finally, we hope that a future archaeological survey and excavation in the site of the ancient Sclafani spa can discover the remains of the collapsed establishment.

Data availability

390 The supporting datasets has not been deposited in a public repository being available as Supplementary Information files.

Team list

The correspondent author ensures that all authors are include in the authors list, its order has been agreed by all
395 authors and that all authors are aware that the paper was submitted. The correspondent author declares: that has been authorized by the co-authors to enter into these arrangement; that the paper has not been published before and it is not under consideration for publication elsewhere; that the publication of the paper has been approved by all the author(s) and by the responsible authorities – tacitly or explicitly – of the institutes where the work was carried out; that the authors have secured the right to reproduce any material; that has already been published or copyrighted elsewhere;
400 that have agree to the Creative Commons Attribution 3.0 License.

Author contributions.

Author contributions are listed here. A. Contino developed ideas about the analysis and triggering mechanism of the Sclafani rockfall and contributed to the drafting of the paper together with P. Bova, G. Esposito and S. Monteleone;
405 A. Contino, P. Bova, G. Esposito worked on the geological/geomorphological field mapping, collected and validated the documentary sources; A. Contino and I. Giuffré, making drawings. I. Giuffré editing the material and discussing the results and the interpretations with the other authors.

Conflict of Interest



410 The authors declare that they have no conflict of interest.

Disclaimer

The opinions, findings, and conclusions or recommendations expressed in the paper are those of the authors and do not necessarily reflect those of the NHESS or the organisation to which.

415

Acknowledgements

This work was financially supported by VIGOR project grants to S. Monteleone, DISTEM, University of Palermo, 2011-12. The authors would like to thank Belinda Butera (State Archive of Palermo, section of Catena), Rita Esposito (University of Palermo, Department of Geotechnics), Orazio Granata (Municipality of Sclafani Bagni), Anna Maria Lo Presti (Notarial Archive of Termini Imerese), Claudia Raimondo (Municipal Library of Termini Imerese), Filippo Picone (CRICD, Regione Siciliana, Palermo), Nicolò Scalzo (State Archive of Palermo, section of Gancia), Maria Luisa Tarraga Baldó (Instituto de Historia del Arte, CSIC, Consejo superior de investigaciones científicas, Madrid, Spain), Alberto Vitale (State Archive of Palermo, section of Termini Imerese) for their invaluable support during the search of documentary data. Stefania Saraceni is acknowledged for providing style correction.

425

References

- Agnesi, V., Alario, D., Collalti, M. and Sabatino, M.(Eds.): Atlante dei Centri Abitati Instabili della Regione Sicilia, Regione Siciliana, Provincia di Palermo, Università degli Studi di Palermo, Dipartimento di Geologia e Geodesia, Consiglio Nazionale delle Ricerche, Gruppo Nazionale per la Difesa dalle Catastrofi Idrogeologiche, Pubbl. n. 2855, 2, OGR, Palermo, 140 pp., 2004.
- Anonymous: Raccolta di Atti e decreti del governo da Gennaio 1851 in poi, 5, Gagliani, Palermo, 344 pp., 1851.
- Almagià, R.: Studi geografici sulle frane in Italia, Memorie della Società Geografica Italiana, 14 (2), 431 pp., 1910.
- Anonymous: Spese pubbliche di Caltavuturo, Pandetta Intendenza di Palermo, MS. 2393, State Archive of Palermo (Section Catena), 1847-59.
- 435 Anonymous: Spese pubbliche di Sclafani, Pandetta Intendenza di Palermo, MS. 2360, State Archive of Palermo (Section Catena), 1849-60.
- Anonymous: Atti relativi all'alluvione del Marzo 1851, Pandetta Intendenza di Palermo, MS. 1123, State Archive of Palermo (Section Catena), 1851-52.
- Aureli, A., Contino, A. and Cusimano, G.: Aspetti idrogeologici e vulnerabilità all'inquinamento degli acquiferi delle Madonie (Sicilia centro settentrionale), Regione Siciliana Azienda Regionale Foreste Demaniali, Università degli Studi di Palermo, Dipartimento di Geologia e Geodesia, Consiglio Nazionale delle Ricerche, Gruppo Nazionale per la Difesa dalle Catastrofi Idrogeologiche, Pubbl. n. 2312, Collana Sicilia Foreste, 39, 168 pp., 1 map scale 1:50000, Sarcuto, Agrigento, 2008.



- 445 Barriendos, M. and Rodrigo, F. S.: Study of historical flood events on Spanish rivers using documentary data, *Hydrol. Sci. J.*, 51, 765-783, 2006.
- Basilone, L. and Lo Cicero, G.: Sequence Stratigraphy of Mesozoic Carbonate Platform-to-Basin System in Northwestern Sicily, in: Roure, F. and Swennen R. (Eds), Deformation, fluid flow and reservoir appraisal in foreland fold and thrust belts, AAPG-IFP Hedberg Research Conference, Abstract volume, 6-9, May 14-18, 2002 Palermo-Mondello (Sicily, Italy), 2002.
- 450 Benso, G. et al.: Discorsi pronunciati dagli intendenti delle province dei Reali Dominii al di là del Faro nell'apertura de' consigli provinciali del 1851, Stabilimento tipografico dell'Armonia, Palermo, 320 pp., 1851.
- Cacciatore, N.: Viaggio ai Bagni Minerali di Sclafani, Reale Stamperia, Palermo, 52 pp., 1828.
- Campisi, T.: Terme e Bagni di Sicilia, 40due edizioni, Palermo, 528 pp., 2015.
- Cappa, R.: Dell'analisi chimica e delle proprietà medicinali dell'acqua termo-minerale di Sclafani, 2a edizione, 455 Seguin, Napoli, 40 pp., 1847.
- Carson, M.A. and Kirkby, M.J.: Hillslope form and process, Cambridge University Press, Cambridge, 475 pp., 1972.
- Caruso, E. and Nobili, A.: Le mappe del catasto borbonico di Sicilia, territori comunali e centri abitati nell'archivio cartografico Mortillaro di Villarena 1837-1853, Regione Siciliana - Assessorato dei beni culturali ed ambientali e della pubblica istruzione, Palermo, 572 pp., 2001.
- 460 Catalano, R., Franchino, A., Merlini, S. and Sulli, A.: Central western Sicily structural setting interpreted from seismic reflection profiles, *Memorie della Società Geologica Italiana*, 55, 5–16, 2000.
- Catalano, R., Agate, M., Avellone, G., Basilone, L., Gasparo Morticelli, M., Gugliotta, C., Sulli, A., Valenti, V., Gibilaro, C. and Pierini, S.: Walking along a crustal profile across the Sicily Fold and Thrust Belt, AAPG International Conference and Exhibition, Post Conference Field Trip Guide, 2011a.
- 465 Catalano, R., Avellone, G., Basilone, L., Contino, A., Agate, M.: Note illustrative della Carta Geologica d'Italia alla scala 1:50.000 dei Fogli 609 e 596 "Termini Imerese – Capo Plaia", Progetto CARG, Istituto Superiore per la Protezione e la Ricerca Ambientale – Servizio Geologico d'Italia, 225 pp., 2011b.
- Catalano, R., Valenti, V., Albanese, C., Accaino, F., Sulli, A., Tinivella, U., Gasparo Morticelli, M., Zanolta, C. and Giustiniani, M.: Sicily's fold–thrust belt and slab roll-back: the SI.RI.PRO. seismic crustal transect, *J. Geol. Soc. London*, London, doi: 10.1144/jgs2012-099, 2013.
- 470 Contino, A., Monteleone, S. and Sabatino, M.: Water resource assessment in karst and fractured aquifers of Termini Imerese-Trabia Mts. (Northern central Sicily, Italy), in Lollino, G. et al. (Eds.), *Engineering Geology for Society and Territory*, 3, Springer, 573-577, 2015.
- Cruden, D. M. and Varnes, D. J.: Landslide types and processes, in Turner, A. K. and Schuster, R. L., (Eds.), 475 *Landslides. Investigation and mitigation*, Transp. Res. Board, Nat. Res. Council, Spec. Rep. 247, Washington, D.C., 36–75, 1996.
- Cusimano, G., Di Cara, A., Marescalchi, P. and Nastasi, P.: Le alluvioni palermitane. Cronologia e cause, dal 934 al



- 1988, Quaderni del Museo Geologico “G. G. Gemmellaro”, Dipartimento di Geologia e Geodesia, Università di
Palermo, 4, ST.ASS., Palermo, 116 pp., 1989.
- 480 Daubrée, A.: Les eaux souterraines a l’époque actuelle, 1, Dunod, Paris, 304 pp., 1887.
- Di Maggio, C., Marino, S., Monteleone, S., and Pipitone, G.: Carta Geomorfologica dell’area di Caltavuturo, scala
1:25000, Dipartimento di Geologia e Geodesia – Università di Palermo, Provincia Regionale di Palermo, Palermo,
1999.
- Di Marzo, G.: Sclafani (footnote), In Amico V., Dizionario Topografico della Sicilia, Di Marzo G. (ed.), 2, Di Marzo-
485 Lao, Palermo, 479-480, 1859.
- Dorren, L.K.A.: A review of rockfall mechanics and modelling approaches, *Progr. Phys. Geogr.*, 27 (1), 69–87, 2003.
- Drago, A. (Ed.): Atlante climatologico della Sicilia, Regione Siciliana - Assessorato Agricoltura e Foreste (Gruppo IV
– Servizi allo Sviluppo – Unità di Agrometeorologia), CD-rom, Palermo, 2002.
- Erismann, TH. and Abele, G.: Dynamics of Rockslides and Rockfalls, Springer Verlag, New York, 316 pp., 2001.
- 490 Evans, S.G. and Hungr. O.: The assessment of rockfall hazard at the base of talus slopes,
Canadian Geotechnical Journal, 30, 620–636, 1993.
- Evans, S.G. and Clague, J. J.: Recent climatic change and catastrophic geomorphic processes in mountain
environments, *Geomorphology*, 10, 107–128, 1994.
- Field, C. B., Barros, V., and Stocker, T. F.: Managing the Risks of Extreme Events and Disasters to Advance Climate
495 Change Adaptation, A Special Report of Working Groups I and II of the IPCC, edited by: Field, C. B. et al.,
Cambridge University Press, Cambridge, 582 pp., 2012.
- Gardner, J. S.: Rockfall frequency and distribution in the Highwood Pass area, Canadian Rocky Mountains, *Z.
Geomorphol.*, 27 (3), 311–324, 1983.
- Giornale Officiale di Sicilia: 15 March 1851, Lao, Palermo, 1851.
- 500 Gortani, M.: Compendio di geologia, 2, Del Bianco, Udine, 480 pp., 1948.
- Grassa, F., Capasso, G., Favara, R. and Inguaggiato, S.: Chemical and isotopic composition of waters and dissolved
gases in some thermal springs of Sicily and adjacent volcanic Islands, Italy, *Pure Appl. Geophys.*, 163, 781-807, 2006.
- Gugliotta, C. and Gasparo Morticelli, M.: Using high-resolution stratigraphy and structural analysis to constrain
polyphase tectonics in wedge-top basins: inferences from the late Tortonian Scillato Basin (central–northern Sicily),
505 *Sediment. Geol.*, doi:10.1016/j.sedgeo.2012.06.009, 2012.
- Gruppo di Lavoro per la Cartografia Geomorfologica: Carta geomorfologica d’Italia 1:50.000 – Guida al rilevamento,
Quaderni del Servizio Geologico Nazionale, serie III, 4, 42 pp., 1994.
- Guzzetti, F., Reichenbach, P. and Ghigi, S.: Rockfall hazard and risk assessment along a transportation corridor in the
Nera Valley, Central Italy, *Environmental Management*, 34 (2), 191–208, 2004.
- 510 Hungr, O., Leroueil, S., and Picarelli, L.: The Varnes classification of landslide types, an update, *Landslides*, 11, 167-
194, 2014.



- Jervis G.: Guida alle acque termali d'Italia, Loescher, Torino, 304 pp., 1868.
- Katz, R. W. and Brown, B. G.: Extreme events in a changing climate: variability is more important than averages, *Clim. Change*, 21, 289–302, 1992.
- 515 Keefer, D. K., Wilson, R. C., Mark, R. K., Brabb, E. E., Brown, W. M., Ellen, S. D., Harp, E. L. and Wieczorek, C. F.: Real-time landslide warning during heavy rainfall, *Science*, 238, 921–925, 1987.
- Krautblatter, M. and Moser, M.: Will we face an increase in hazardous secondary rockfall events in response to global warming in the foreseeable future?, in *Global Change in Mountain Regions*, edited by: Price M. F., Sapiens Publishing, Duncow, 2006.
- 520 Massa G.: Schizzo del Territorio di Sclafani, Regione Siciliana - Centro Regionale per l'Inventario, la Catalogazione e la Documentazione dei beni culturali e ambientali (CRICD), Servizio Documentazione, Unità Operativa X – Aerofototeca, Fondo catasto borbonico - archivio Mortillaro di Villarena, n. 351, 1846-50.
- Marieni, L.: Geografia medica dell'Italia. Acque minerali, Vallardi, Milano, 665 pp., 1870.
- Minà Palumbo, F.: Studj agrarj sulla campagna settentrionale delle Madonie. Proverbj agrarj, *Annali di agricoltura siciliana*, 1, IIa serie, Pedone Lauriel, Palermo, 300 pp., 1854.
- 525 Mongitore A.: Della Sicilia Ricercata nelle cose più memorabili, 2, Valenza, Palermo, viii+505 pp., 1743.
- Mortillaro, V.: Leggende storiche siciliane dal XIII al XIX secolo, 3a edizione, Puccio, Palermo, pp. 264–267, 1887.
- Petrucci, O. and Polemio, M.: The use of historical data for the characterisation of multiple damaging hydrogeological events, *Nat. Hazards Earth Syst. Sci.*, 3, 17–30, 2003.
- 530 Pitré, G.: Canti popolari siciliani, 2, Pedone Lauriel, Palermo, 520 pp., 1871.
- Porter, S.C. and Orombelli, G.: Catastrophic rockfall of September 12, 1717 on the Italian flank of the Mont Blanc Massif, *Z. Geomorphol.*, 24, 200–218, 1980.
- Possenti, C.: Relazione al Signor Ministro dei Lavori Pubblici in visita alle opere di ponti e strade e di porti, spiagge e fari nelle provincie siciliane, Tipografia Internazionale, Milano, 192 pp., 1865.
- 535 Regione Siciliana: Piano Stralcio di Bacino per l'Assetto Idrogeologico (P.A.I.), bacino Idrografico del Fiume Imera Settentrionale, 93 pp., 2004.
- Rosenzweig, C., Casassa, G., Karoly, D.J., Imeson, A., Liu, C., Menzel, A., Rawlins, S., Root, T. L., Seguin, B. and Tryjanowski, P.: Assessment of observed changes and responses in natural and managed systems, in: Parry M. L. et al. (Eds.), *Climate Change 2007: Impacts, Adaptation and Vulnerability. Contribution of Working Group II to the*
- 540 *Fourth Assessment Report of the IPCC*, 97–131, Cambridge University Press, Cambridge, 2007.
- Salemi G.: Figura Topografica del circuito e feudi del Territorio di Sclafani con i loro confini, *Archivio di Stato di Palermo*, sezione Gancia, Inventario 6/b, Miscellanea carte topografiche n. 13, “scala di catene ottanta della corda legale”, Drawing India ink and water colours, 1833.
- Santini, M., Grimaldi, S., Petroselli, A., Nardi, F. and Rulli, M. C.: Pre-processing algorithms and landslide modelling on remotely sensed DEMs, *Geomorphology*, 113, 110–125, 2009.
- 545



- SOGESID (Ed.): Piano di tutela delle acque della Sicilia, Bacino idrografico Imera settentrionale (R19030), Regione Siciliana, 64 pp., 2007.
- Selby, M. J.: Hillslope materials and processes, Oxford University Press, New York, 1982.
- Scheidegger, A. E.: Physical aspects of natural catastrophes, Elsevier, Amsterdam - New York, 1975.
- 550 Sillmann, J. and Roeckner, E.: Indices for extreme events in projections of anthropogenic climate change, *Clim. Change*, 86, 83–104, 2008.
- Stoppani, A.: Note ad un corso annuale di Geologia, 1, Bernardoni, Milano, 356 pp., 1866.
- Tacchini, P.: Sulla pioggia raccolta all'Osservatorio del Collegio Nautico di Palermo, *Giornale di Scienze Naturali ed Economiche di Palermo*, Palermo, 4 (2), 33-40, 61-80, 1868.
- 555 Termotto, R.: Sclafani Bagni Profilo storico ed attività artistica, Comune di Sclafani Bagni, Priulla, Palermo, 160 pp., 2009.
- Vinaj, G. S. and Pinali, R.: Le acque minerali e gli stabilimenti idropinici e idrotermali d'Italia. 2 voll., Grioni, Milano, viii+461 pp., 531 pp., 1916-1923.
- Walter, J. (Ed.): World disasters report 2001, International Federation of the Red Cross and Red Crescent Societies, 560 222 pp., SADAG Imprimerie, Bellegarde/Valserine, 2001.
- Waring, G.A.: Thermal springs of the United States and other countries of the World – A Summary, Revised by Blankenship R.R. and Bentall R., U. S. Geological Survey Professional Paper, 492, U. S. Govt. Print. Off., Washington, ix+383 pp., 1965.
- Whalley, W. B.: Rockfalls, in Brunsdon, D., and Prior, D. B., (eds.), Slope instability, John Wiley and Sons Ltd., 565 217–256, 1984.
- Wieczorek, G.F. and Jäger, S.: Triggering mechanisms and depositional rates of postglacial slope movement processes in the Yosemite Valley, California, *Geomorphology*, 15, 17–31, 1996.
- WP/WLI: A Suggested method for reporting a landslide, The International Geotechnical Society UNESCO Working Party for World Landslide Inventory, *Bull. Int. Assoc. Eng. Geol.*, 41, 5-12, 1990.
- 570 Zellmer, J. T.: The unexpected rockfall hazard, *Bull. Int. Assoc. Eng. Geol.*, 24, 2, 281–283, 1987.

Captions:

- 575 Figure 01 - Map of Sicily with the location of the study area and of the sites cited in the text. Map Datum World Geodetic System 1984 / Universal Transverse of Mercator Zone 32N.

Figure 02 - Simplified structural sketch of the study area showing the Cervi-Rocca Sciara-Sclafani Anticlinorium. SD (Syntectonic deposits); NF (Numidian Flysch, cap rock); SC (Sicilidi Units); IM (Imerese Units, multilayered



580 reservoir). TSF (Transpressional Sclafani Fault); TCF (Transpressional Cervi Fault). Drawing modified after Catalano
et al., 2011b, Gugliotta and Gasparo Morticelli, 2013.

Figure 03 – Schematic N-S geological and geomorphological profile at the Mt. Sclafani. Details and explanation in
the text, location of section in Fig. 5. Note the sequences of caprocks and soft rocks enhanced by selective weathering
585 and erosion.

Figure 04 – Interpreted northern transect of the SLRI.PRO. crustal seismic reflection profile, showing the
hydrostructural setting of the tectonic units near the Sclafani area (drawing modified after Catalano et al., 2011a). NF
(Numidian Flysch, cap rock); SC (Sicilidi Units); IM (Imerese Units, multilayered reservoir).

590 Figure 05 – Simplified geological and geomorphological map of Mt. Sclafani (equidistance of elevation contours:
20m), shown the sector crossed by the section of Fig. 3.

Figure 06 – Map of the fiefs and territory of Sclafani (detail) drawn by Gaetano Salemi (India ink and water colours,
1833; not oriented). The detail shows the small town, the prominent spur (brick floor in the map) at the base (Lower
595 Cliff) of Mt. Sclafani, the “thermal bath houses” (“Bagni”), the thermal pond (number 17) and the Ferrandina’s water
mills (“Molini”). State Archive of Palermo, section of Gancia; authorisation for reproduction no. 7/2016, ref. no. 5236
– 22 November 2016. The rhombus shows the location of a new one-floor thermal establishment (1856-57, the so-
called “Masseria Bagni” i.e. “thermal bath farm”).

600 Figure 07 – Sketch of the territory of Sclafani (detail) drawn by Giuseppe Massa (attrib. 1846-50; not in scale and
without orientation). The detail shows the small town, the ancient Sclafani spa and the connecting mule track.
Drawing modified after Caruso and Nobili, 2001.

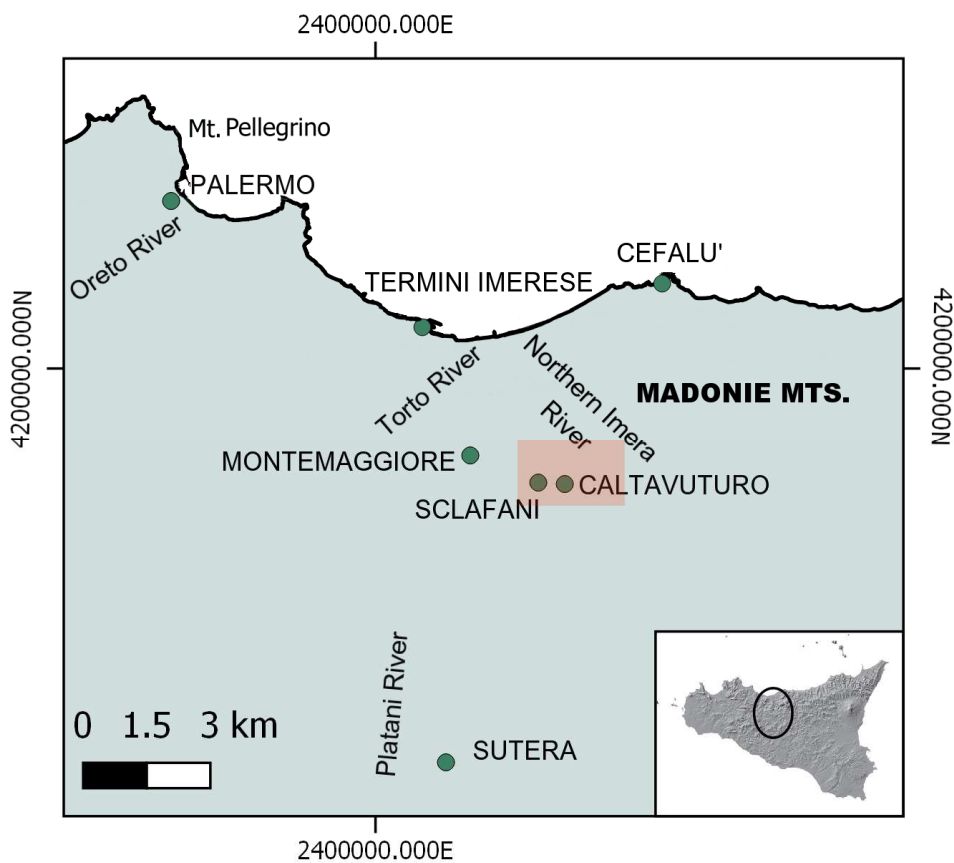
605 Figure 08 – N-S geological and hydrogeological sketch (not in scale) of Mt. Sclafani drawn by Felice Giordano,
approximately in 1860, using the Bourbon maps of 1849-52 (drawing modified after Doubrée, 1887). Legend: I.
marls (Trias, Impermeable, not outcropping); Td. Dolomites (Trias); L. Limestones (Lias); Ca. clays (Cenomanian);
Cc. Marls and limestones (upper Cretaceous); Ec. Limestones (lower Eocene); Ea. Speckled clays (middle Eocene);
F. Fault; S. Thermal springs and location of the ancient Sclafani spa.

610 Figure 09 – Anonymous, very detailed engraving of the ancient Sclafani spa (from Cappa, 1847, courtesy of the
Faculty of Medicine Library, Complutense University of Madrid). Note in the foreground a rock block (linked to
more ancient rockfalls).



615 Figure 10 – The present landscape surrounding the site of ancient Sclafani spa. The arrow indicates the location of
the new thermal new one-floor thermal establishment (1856-57, the so-called “Masseria Bagni” i.e. “thermal bath
farm”). The star indicates the today’s location of Sclafani’s thermal springs.

620



625

Fig. 01



630

635

640

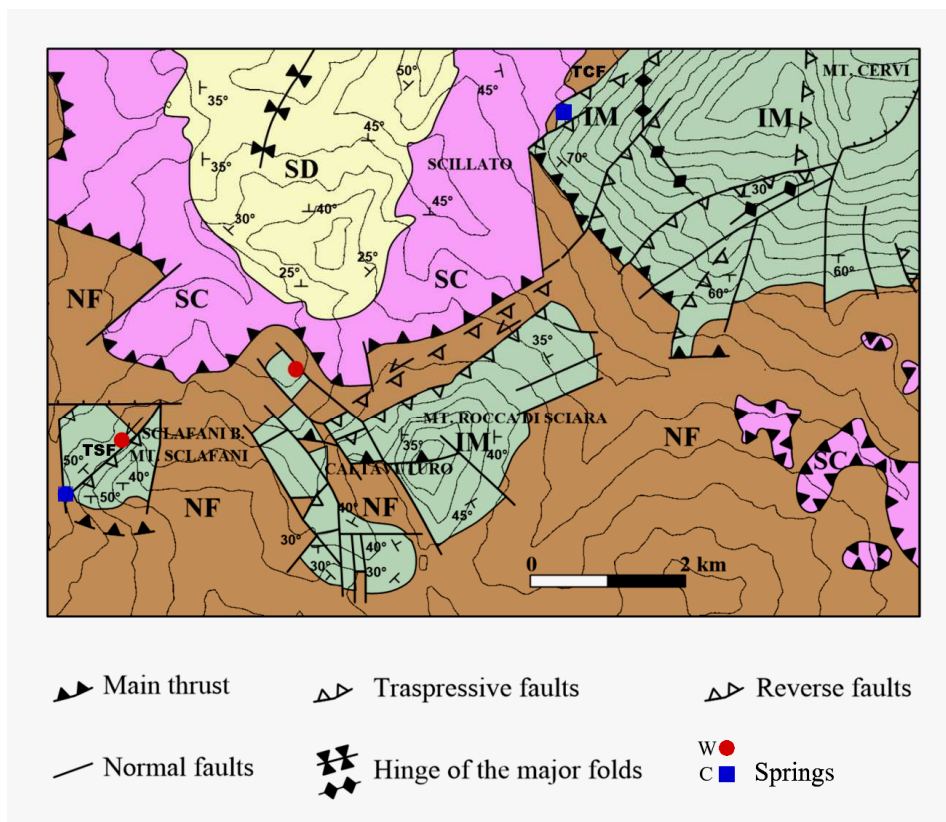
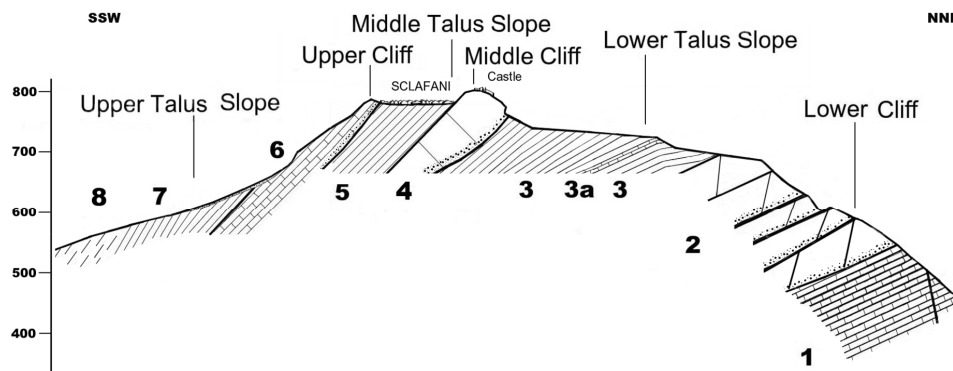


Fig. 02

645



650

Fig. 03

655

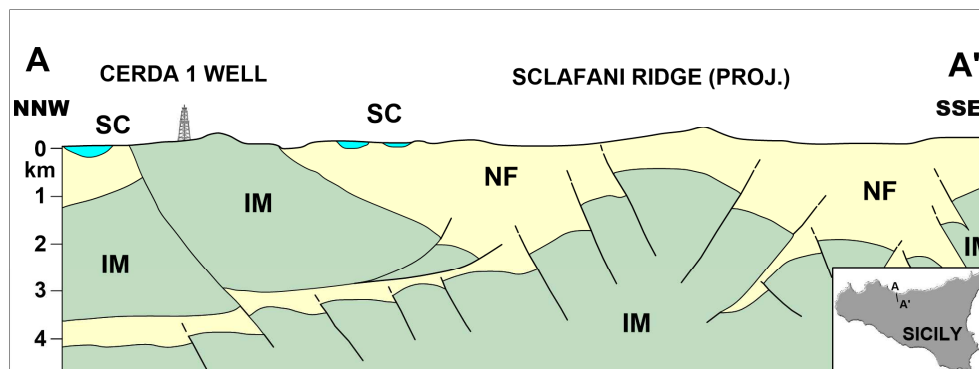


Fig. 04

660

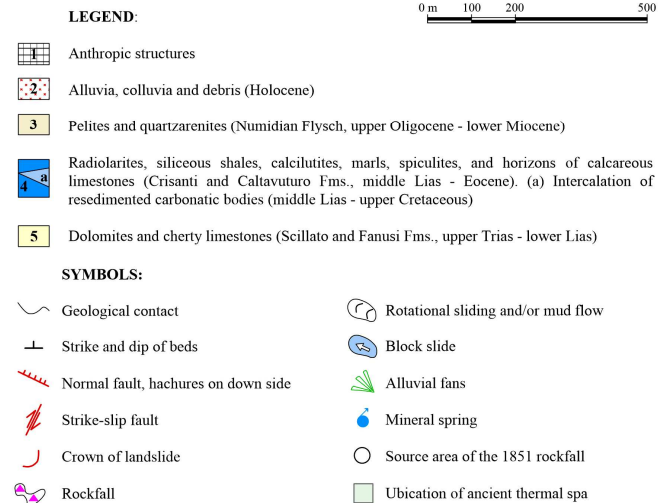
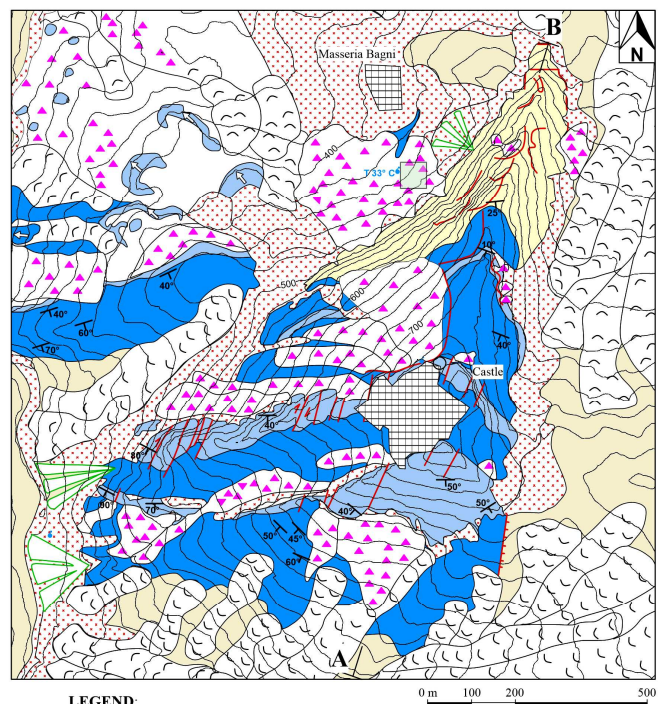


Fig. 05

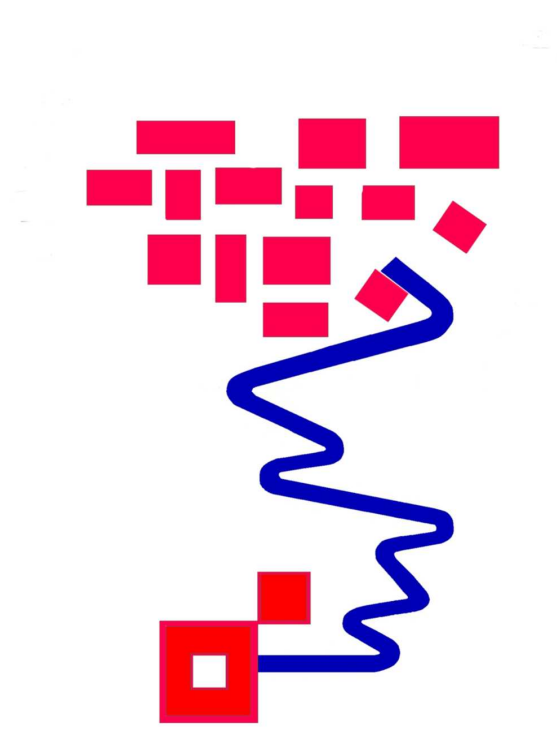


665



Fig. 06

670



675

680

Fig. 07

685

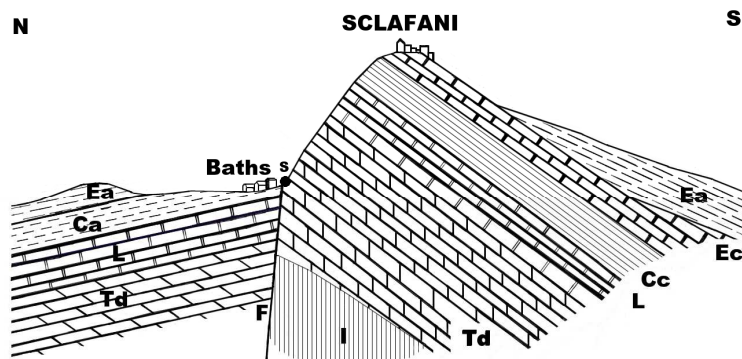


Fig. 08



695

Fig. 09

700



705

Fig. 10

710

715

720