

Responses to the reviewer's comments on the manuscript

“Assessment of ripple effect and spatial heterogeneity of total losses in the capital of China after a great catastrophe shocks”

The authors would like to thank the reviewer for your efforts on this manuscript and providing us with insightful comments and suggestions to improve the quality of this manuscript. The following responses have been prepared to address reviewers' comments in a point-by-point fashion. And the sentences in red are the corresponding revised parts in our revised manuscript. The information of Page/Line in blue refers to the revised manuscript rather than the complete manuscript. We also attach a marked-up manuscript version in the below of the responses.

Firstly, we have confirmed that the names for all authors on the title page are used as full first name.

Referee #1 Comments:

This paper addresses a very interesting topic: the economic evaluation of the ripple effect and spatial heterogeneity after a catastrophe, with an application to earthquakes in the one of the most developed regions of China. The paper is well innovative and well written. It does a good job analyzing the ripple effect and spatial heterogeneity of total economic losses (especially indirect economic loss) by the established IRRE model. The results that the loss can be spatial extended into each street, and sectors' losses in each street can be further evaluated are both meaningful and useful.

i) Page 3, Line 3. Writing the names of the DEL and IEL in Figure 1 instead of acronyms would make it easier for the readers, especially in the introduction.

Response: **Thanks for your comments.** We have already changed the full names of the direct economic loss and indirect economic loss instead of acronyms “DEL” and “IEL” in Figure 1. And we also delete the words below the Figure 1: “, DEL means direct economic loss, IEL means indirect economic loss”.

Please Check the Page 3, Line 7 in the revised manuscript.

ii) Page 6, Line16. You refer to Sichuan Province is a less developed region in China, (Page 2, Line18) refer to Beijing is a developed metropolises in China...What is the criterion to judge their economic development degree?

Response: **Thanks for your suggestion.** We added a paragraph on the Page 7, Line 4 to illustrate the development level between Sichuan province and Beijing. Besides, we also compare per capita of BJ with the world standard to highlight its development:

“The per capita GDP of SCP only ranks 24th of the 34 provinces and cities of China, while that of BJ ranks the second, and is almost more than double as the per capita of upper middle income country (5511 USD in 2008, from World Bank). The population density of SCP is 168/km², which ranks 25th, and that of BJ is up to 1079/km², which ranks 4th.”

iii) Page10, Line10. The SDN model, “DELBJ/CAPBJ stands for direct economic loss/stock of fixed asset of BJ”; Page10, Line18. The IRRE model, “BINstr stands for business income of streets/(villages and towns)”. Why do you use stock of fixed asset to spread direct economic loss, use business income to spread indirect economic loss?

Response: **Thanks for your comment.**

The reasons that the stock of fixed asset is used to spread direct economic loss are: i) the direct economic loss belongs to the concept of “stock”, the stock of fixed asset is in line with the nature of direct economic loss; ii) the destruction of sectors caused by earthquake disaster is mainly concentrated in destruction of stock of fixed asset, and the replacement costs of stock of fixed assets account for the most in the statistical components of direct economic loss; iii) the production capacity in the ARIO model is the key variable which is used to indicate the ability of increasing supply level to meet the post-disaster demand. The production capacity is set that it decreases x% when the stock of fixed asset decreases x% caused by the disaster. Therefore, using the sectors’ stocks of fixed asset of streets/ (villages and towns) to spread direct economic loss not only accords with the statistical significance of direct economic loss, but also accords with the simulated mechanism of ARIO model.

The reasons that the business income is used to spread indirect economic loss are: i) the indirect economic loss

belongs to the concept of “flow”, the business income is the flow data, so it’s in line with the nature of indirect economic loss; ii) in the earthquake disaster aftermath, the enterprises will reduce production due to the limitation of production capacity, production bottleneck, and industrial linkage. All of the limitations can be reflected in the business income of the affected year.

5 The business income of a sector will be greatly affected if that sector suffers large indirect economic loss; iii) Due to the fact of data limitations, only business income meets the data requirement to spread the indirect economic loss in all the available statistics of streets/(villages and towns). In fact, the most accurate method to assess the indirect economic loss of every street/(village and town) in Beijing is to simulate them one by one based on ARIO model and their direct economic losses. However, it’s impossible in China, because there are no Input-Output Table of every street/(village and town) and the import and export data between different regions. Therefore, according to the existing data, using business income data to spread indirect economic loss accords with the theoretical and practical significance.

We added a paragraph to describe the explanation.

15 On Page 12, Line 5: “The stock of fixed asset is used in SDN model because that: i) the stock of fixed asset belongs to the concept of “stock”, which is in line with the nature of direct economic loss. And the replacement costs of stock of fixed assets account for the most in the statistical components of direct economic loss; ii) the core idea of the feedback of the production capacity of economic system in the ARIO model is that production capacities of sectors decreases x% when the stocks of fixed assets decreases x% caused by the disaster. Therefore, the using the sectors’ stocks of fixed asset not only accords with the statistical significance of direct economic loss, but also the simulated mechanism of ARIO model.”

20 On Page 12, Line 20: “The business income is used in IRRE model because that: i) the business income is the flow data, which is in line with concept of “flow” of indirect economic loss; ii) in the earthquake disaster aftermath, the production reduction due to the limitation of production capacity, production bottleneck, and industrial linkage can be reflected in the business income of the affected year. The business income of a sector will be greatly affected if that sector suffers large indirect economic loss. Therefore, it’s reasonable to use business income in the IRRE model.”

iv) Page 10, Line 16. What's the meaning of the parameters of spatial aggregation in Figure 4? You should illustrate them.

Response: **We are agree with your suggestion.**

5 We have already added the corresponding illustration below the Figure 4 due to the space limitation. Please check the Page 17, Line 4 in the revised manuscript:

“the global Moran's I is an index to measure spatial correlation, which is more obvious when its value is closer to 1. The z-score and p-Value are used to judge confidence coefficient level, the results show that both of spatial aggregation of DEL and IEL exceed the 99% confidence interval.”

10

Referee #2 Comments:

The paper conducts a hypothetical case by applying 2008 Wenchuan earthquake into Beijing. It integrates scenario analysis, Adaptive Regional Input-Output (ARIO) model and Inter-regional ripple effect (IRRE) model to assess both direct and indirect economic loss of this hypothetical earthquake in Beijing. Specifically, the proposed IRRE model allows to investigate the spatial heterogeneity of direct and indirect loss. The paper appears to be one of the few papers conducting scenario analysis based on real past catastrophe and applying it onto another region. In this respect, the paper has certain level of novelty and it provides strong evidence to support pre-disaster preparation by Chinese local governments.

15

However, the paper is subject to a couple of limitations as follows:

20

i) The paper utilizes an ARIO model to simulate the post-catastrophe economy in Beijing. However, some key parameters in the ARIO model requires more detailed explanation. For adaptation mechanisms, apart from overproduction capacity, how did you deal with imports? Price/quantity changes after floods? It's fine not to consider those factors as they can be very complicated, but the authors need to clearly state those parameters. Is those factors considered exogenously or endogenously?

25

Response: **Thanks for your comments.** The comment includes three questions, so we intend to answer them

separately.

1. For adaptation mechanisms, apart from overproduction capacity, how did you deal with imports?

Response: this paper copes with the imports from three aspects: i) Input-Output (IO) Table: The ARIO model improves the traditional IO Table in such way: For the every production j , there is coefficient P_j , $P_j = (Production - Export) /$

5 $(Production - Export + Import)$. The model multiplies the values of quadrant I and quadrant II of traditional IO table by coefficient P_j , creating a Local Input- Output table (LIO). The purpose is to remove the import part from the production and services of intermediate consumption/ inputs and final consumption, and to distinguish between sectors that produce goods and services that can be imported and those that produce goods and services that have to be locally produced. ii) setting substitutability of sectors: The model sets the substitutability of sectors based on the conditions
10 that whether the sectors' productions and services can be imported from the outside of disaster-hit area. This study sets the manufacturing sectors (#3-#10), construction sector (#12) and Transportation, Post & Telecommunications (#13) cannot be substituted, other sectors' productions and services can be imported from the outside areas; iii) if a sectors can be substituted and its production capacity is insufficient during the reconstruction period, the import part is introduced. The imports amount depends on the relationship between demand and production, the parameter of import
15 delay. The specific formula is as follows:

$$I(j) + \frac{TD^t(i) - Y(i)}{TD^t(i)} A(j, i) \frac{\Delta t}{t_A^\downarrow} \xrightarrow{\Delta t} I(j)$$

The sector j is the sector who consumes the goods or services produced by sector i , $TD(i)$ and $Y(i)$ is the demand and production of sector i , A is the intermediate consumption, Δt is the time step of model, t_A^\downarrow is the parameter of import delay, and the initial $I(j)$ is the import of sector j at t^{th} month during reconstruction period, which is decided by
20 the ratio of the production of t^{th} month and the production of pre-disaster. The formula is shown as follows:

$$I(t+1, j) = I(t, j) \times \frac{Y(t+1, j)}{Y(1, j)}$$

2. Price/quantity changes after floods?

Response: we think the floods the referee proposed is actually the earthquake.

The Change in price in this study is calculated by the relationship between demand and production in the disaster aftermath. The ARIO model assumes that commodity prices respond linearly to the level of underproduction, and uses a single parameter of price inflation (parameter ζ in Table 2) for the whole economy in applying these prices.

5 Therefore, the changes in prices do not strongly feed back into the simulation results. But these assumptions accord with the rescue policy of Chinese government after the catastrophe. The government will strictly control the changes in price, avoiding the serious inflation in the disaster aftermath.

3. Is those factors considered exogenously or endogenously?

10 Response: According to the above description, the imports and prices are endogenously and the parameter of price inflation is exogenously. For the imports: the process for the imports data is based on the improved traditional IO table and the model itself; for the changes in prices, it's decided by the changes of demand and production. So the imports and prices are endogenously. For the price inflation, it depends on the condition of China's rescue policy. It changes with the different economic systems of disaster-hit areas. Therefore, it is exogenously.

15 We answer the above three questions together in the manuscript, please check the [Page 10, Line 15](#) in the revised manuscript.

ii) The paper distributes the direct and indirect economic loss into specific districts based on street-total capital ratio and street-total business income ratio, respectively. There are assumptions underlying here. Please state clearly about
20 *this.*

Response: **Thanks for your suggestion.**

As is mentioned in the section 3.1, according to the core damage scope of 2008 Wenchuan earthquake and the uncertainty of seismic source location and the seismic intensity ranges, this study assumes the intensity of disaster damage is evenly distributed in the space of Beijing, gives the upper limit of the losses caused by the catastrophe.

25 Based on the above assumption, the direct economic loss and indirect economic loss can be spread by the stock of

fixed asset and the business income respectively. For the distribution of direct economic loss, the stock of fixed asset data are used in the SDN model. Except for the reason mentioned in the section 3.4 that the stock fixed asset belongs to the inventory change, there are two more reasons: i) the replacement costs of stock of fixed assets account for the most in the statistical components of direct economic loss; ii) the core idea of the feedback of the production capacity of economic system in the ARIO model is that production capacities of sectors decreases x% when the stocks of fixed assets decreases x% caused by the disaster. Therefore, the using the sectors' stocks of fixed asset not only accords with the statistical significance of direct economic loss, but also the simulated mechanism of ARIO model.

For the distribution of indirect economic loss, the business income data are used in the IRRE model. Except for the reason mentioned in the section 3.5 that the business income is the flow data which is in line with the concept of “flow” of indirect economic loss, there is one more reason: in the earthquake disaster aftermath, the production reduction due to the limitation of production capacity, production bottleneck, and industrial linkage can be reflected in the business income of the affected year. The business income of a sector will be greatly affected if that sector suffers large indirect economic loss. Therefore, it's reasonable to use business income in the IRRE model.

The part of this comment is similar to the third comment of RC1, so we answer these two comments together in the revised manuscript. The corresponding description is shown on the [Page 11, Line 18](#), [Page 12, Line 5](#) and [Page 12, Line 20](#).

iii) The paper requires thorough language-editing, especially in section 4-Results of loss assessment. Some of the results are given mistakenly in 4.1, such as 'The indirect economic loss accounts for 41.5% of total loss, and almost the same as the indirect economic loss', 'The total loss has exceeded the 2.6% of BJ's GDP in 2008, and accounted for 3.6% of the national GDP of 2008.'

Response: **Thanks for your comment.** We have already corrected the sentences and checked the section 4 again.

“The indirect economic loss accounts for 41.5% of total loss, and almost the same as the indirect economic loss.” on the [Page 13, Line 16](#) is changed as “The indirect economic loss accounts for 41.5% of total loss, and **is** almost the same as the indirect economic loss.”

“The total loss has exceeded the 2.6% of BJ’s GDP in 2008, and accounted for 3.6% of the national GDP of 2008.” on Page 13, Line 18 is changed as “The total loss has exceeded the 2.6% of BJ’s GDP in 2008, and **accounts** for 3.6% of the national GDP of 2008.”.

5 “...the decreasing value is up to 3.63%,...” on Page 13, Line 20 is changed as “the decreasing value **was** up to 3.63%.”.

“...therefore the economic impact caused by the catastrophe can seriously impede the sustainable development in the future (Table 4)” on Page 13, Line 21 is changed as “...therefore the economic impact caused by the catastrophe seriously **impeded** the sustainable development in the future (Table 4)”.

The term “100 CNY” on Page 14, Line 5 for example is changed as “**USD** 100”.

10 On Page 15, Line 7: “Statistics losses data on the spatial scales of districts/counties **are** based on those of streets/(villages and towns),” “are” is added in the sentence.

On Page 15, Line 12: “and ~~its~~ the total economic losses is 1.76 times of its direct economic loss.”, “its” is changed as “**the**”.

15 “BJ has a developed tertiary industry, accounting for 77.9% of the total GDP of the city, and affected by the population and commercial distribution,” on Page 17, Line 10 is changed as “BJ has a developed tertiary industry, **which accounts** for 77.9% of the total GDP of the city. **Affected** by the population and commercial distribution,”

On Page 18, Line 7: “accounting for 25% of total indirect economic loss of Chaowai Street.” is changed as “**accounts** for 25% of total indirect economic loss of Chaowai Street.”. On Page 18, Line 8: “accounting for 68% of the losses of the street.” is also changed as “**accounts** for 68% of the losses of the street.”

20 On Page 18, Line 9: “Government **departments** should pay attention to ...”, the term “**departments**” is deleted as “Government should pay attention to ...”

“Due to the severe damage of fixed assets of the secondary industry, seriously inadequate intermediate input, decrease of the demands of downstream industries, and decrease of production and increase of inventory of the secondary industry may be one of the major reasons to cause the increase of the indirect economic loss of the tertiary industry.” on Page 18, Line 14 is changed as “**i) the severe damage of fixed assets of the secondary industry leads to the**

seriously inadequate intermediate input, ii) the decrease of the demands of downstream industries leads to the decrease of production or the increase of inventory of the secondary industry may be the two major reasons to cause the increase of the indirect economic loss of the tertiary industry.”

5 On Page 18, Line 18: “When government making the recovery and reconstruction policy, it is suggested to not only consider the impact of industrial linkage, but also need to promote the post-disaster production capacity of the secondary industry,” is changed as “When government makes the recovery and reconstruction policy, it is suggested not only to consider the impact of industrial linkage, but also to promote the post-disaster production capacity of the secondary industry,”

10 Some words in the sentences “their industrial structure is also mainly dominated by the secondary industry, so the majority of total loss in this district are the losses of the secondary industry Therefore, industrial distribution and industrial structure are key elements for determining the size of indirect economic loss of a region. In the course of post-disaster recovery and reconstruction, government departments need to ...” on the Page 18, Line 24 is changed as “the industrial structure of this District is also mainly dominated by the secondary industry, so the majority of total losses in Shunyi District are the losses of the secondary industry. Therefore, industrial distribution and industrial structure are
15 key elements for determining the size of indirect economic loss of a region. In the course of post-disaster recovery and reconstruction, government needs to ...”

On Page 19, Line 5: “The left figure: direct (DEL) and indirect (IEL) economic loss of sectors of the secondary industry and the tertiary industry of Chaowai Street” is changed as “The left figure: direct (DEL) and indirect (IEL) economic loss of sectors of the secondary industry and the tertiary industry of Chaowai Street”.

20 On Page 20, Line 3: “(Figure (a): under scene A; Figure (b): under scene B1; Figure (c): under scene C)” is added in the below of Figure 6 for better understanding.

“...extend to the regions such as Changping District...” on the Page 20, Line 11 is changed as “...extended to the regions such as Changping District...”

“...still have losses without showing much decrease along with the rescue effort improving,” on the Page 20, Line
25 18 is changed as “...still suffer losses without showing much decrease along with the improving rescue effort,”

“under rescue scene C” is added on the Page 21, Line 2 “post-disaster affected areas* under rescue scene C is reduced by 4,364 km2,” for better understanding.

On Page 21, Line 3: “It indicates that when the rescue effort is increased to 150% 3 months ahead of schedule,” is changed as “It indicates that when the rescue effort is increased to 150% within 3 months,”

5

Short Comments:

This paper tries to assess the ripple effect and spatial distribution of total capital loss after a natural disaster event. Such topic is really interesting and important for natural disaster risk analysis. The data of capital loss for some specific sectors or regions are not easily to obtain, but such data are significant for the total economic impact analysis after the disaster. This paper provides a useful method to calculate the direct and indirect capital loss for each sector and also gives different scenarios to analyse the ripple effects of indirect economic loss.

10

i) Page 2, line 7-10 Indirect economic loss has a very clear definition, but what is the direct part? It is better to give the definition of “direct economic loss”.

15

Response: **Thanks for your comments.** We agree with your comment. We have added the corresponding description on Page 2, Line 8, please check the revised manuscript.

“For the direct economic loss, it belongs to the physical damage when it occurs in an instant and the induced physical impact after the disaster (Cochrane, 1997).”

20

ii) In Page 2, line 13-16, it mentions, “The Input-Output (IO) model and Computable General Equilibrium (CGE) model are two representative models which are commonly used to assess indirect economic loss.” but in this research, only the Input-Output model is used. Why? It is better to explain why you choose IO model, but not CGE model.

Response: **Thanks for your suggestion.** We added a paragraph to describe the difference between the IO model and CGE model on Page 9, Line 17:

25

“.....This model is based on traditional IO model, and combines some advantages of CGE model. CGE model

considers many complicated factors based on nonlinear thought such as market feedback, price change, but it also demand detailed statistical data and complicated process of parameter validation. These data are difficult to acquire at the scale of “unban” even “streets/ (villages and towns)”. Therefore, ARIO model is appropriate in this study, it takes a full consideration on economic characteristics.....”

5

In addition, we also added two new financial supports fund: “Beijing Municipal Natural Science Foundation, NO. 9172010” and “Major Program of National Natural Science Foundation of China No. 91325302”, on Page 22, Line 9, because they gave us much help during the modification period.

On Page 1, Line 4, 6, 8: the name of Institute is changed during the modification period.

10 On Page 1, Line12: the address of Number 5 (Yu Liu) is corrected as “Institutes of Science and Development, Chinese Academy of Sciences, No.15 Zhongguancun Beiyitiao, Haidian District, Beijing, 100190, China”. Because the name of the Institute has changed during the period of review.

Table List of all relevant changes made in the revised manuscript

ID	Referee	Page	Line
1	authors	1	4, 6, 8
2	authors	1	12
3	Short comments	2	8
4	Referee #1	3	7
5	Referee #1	7	4
6	Short comments	9	17
7	Referee #2	10	15
8	Referee #2	11	18
9	Referee #1	12	5
10	Referee #2	12	5
11	Referee #1	12	20
12	Referee #2	12	20
13	Referee #2	13	16
14	Referee #2	13	18
15	Referee #2	13	20

16	Referee #2	13	21
17	Referee #2	14	5
18	Referee #2	15	7
19	Referee #2	15	12
20	Referee #1	17	4
21	Referee #2	17	10
22	Referee #2	18	7
23	Referee #2	18	8
24	Referee #2	18	9
25	Referee #2	18	14
26	Referee #2	18	18
27	Referee #2	18	24
28	Referee #2	19	5
29	Referee #2	20	3
30	Referee #2	20	11
31	Referee #2	20	18
32	Referee #2	21	2
33	Referee #2	21	3
34	authors	22	9
35	authors	22	9

Assessment of ripple effect and spatial heterogeneity of total losses in the capital of China after a great catastrophe shocks

Zhengtao Zhang^{1,3}, Ning Li^{1,2,3}, Wei Xie⁴, Yu Liu⁵, Jieling Feng^{1,3}, Xi Chen^{1,3}, Li Liu^{1,3}

¹State Key Laboratory of Earth Surface Processes and Resource Ecology, [Faculty of Geographical Science](#), Beijing Normal University, Beijing, 100875, China

²Key Laboratory of Environmental Change and Natural Disaster, MOE, [Faculty of Geographical Science](#), Beijing Normal University, Beijing, 100875, China

³Academy of Disaster Reduction and Emergency Management, Ministry of Civil Affairs & Ministry of Education, [Faculty of Geographical Science](#), Beijing, 100875, China

⁴China Center for Agricultural Policy, School of Advanced Agricultural Sciences, Peking University, No 5 Yiheyuan Road, Haidian District, Beijing, 100871, China

⁵ [Institutes of Science and Development, Chinese Academy of Sciences, No.15 Zhongguancun Beiyitiao, Haidian District, Beijing, 100190, China](#)~~The Institute of Policy and Management (IPM) of Chinese Academy of Sciences, Beijing 100190, China~~

Correspondence to: Ning Li (ningli@bnu.edu.cn)

Abstract. The total losses caused by natural disaster have spatial heterogeneity due to different economic development level inside the disaster-hit areas. This paper set the scenarios of direct economic loss to introduce the sectors' loss caused by 2008 Wenchuan earthquake into Beijing, utilized Adaptive Regional Input-Output (ARIO) model and Inter-regional ripple effect (IRRE) model. The purpose is to assess the ripple effects of indirect economic loss and spatial heterogeneity of both direct and indirect economic loss at the scale of smallest administrative divisions of China: streets/ (villages and towns). The results indicate that the district of Beijing with the most severe indirect economic loss is Chaoyang district; Finance & Insurance industry (#15) of Chaowai Street suffers the most in Chaoyang district, which is 1.46 times of its direct economic loss. During 2008-2014, the average annual GDP growth rate of Beijing could be decreased 3.63% affected by the catastrophe. Compared with the 8% of GDP growth rate target, the decreasing GDP growth rate is a significant and noticeable economic impact, and it can be efficiently reduced by increasing rescue effort and priority supporting the industries which are located in the seriously damaged regions.

1 Introduction

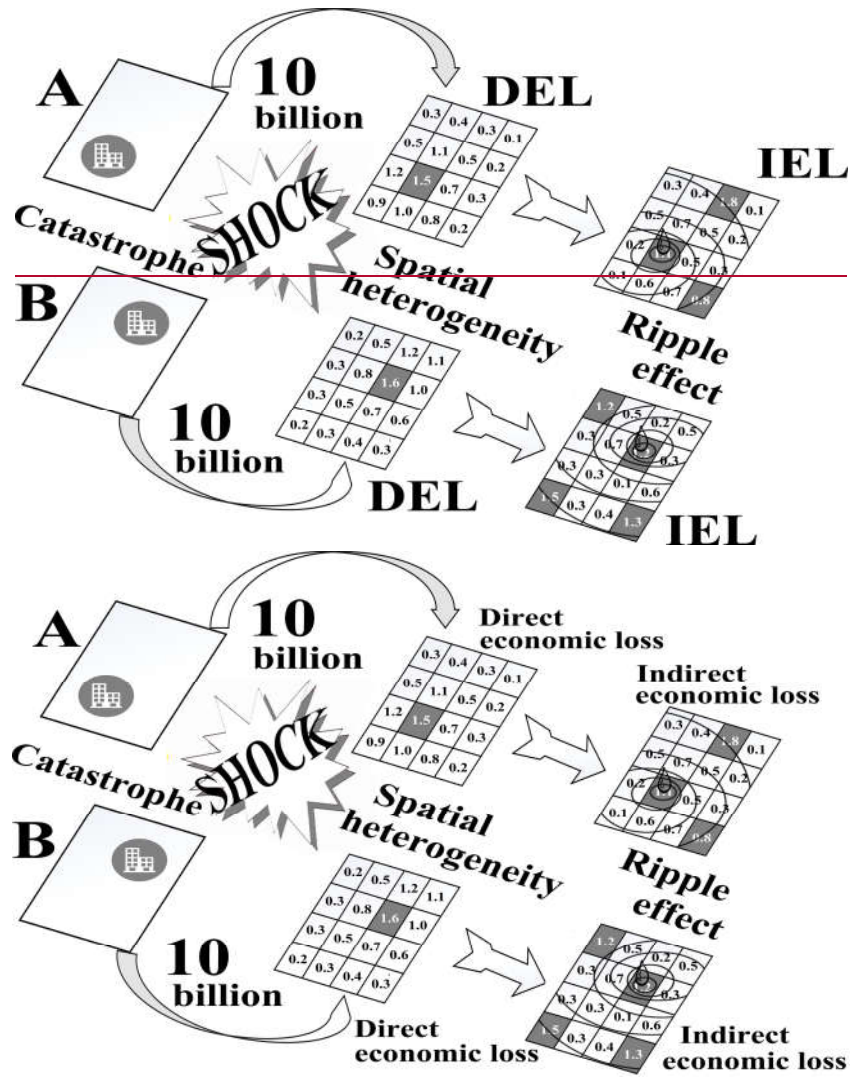
Economic losses caused by frequent natural disasters have been increased dramatically, and pose serious challenges to the world sustainable development and human safety(Munich, 2002). In April 2016, earthquakes with $M_S > 7$ occurred within 8 days in succession in Japan($M_S 7.3$), Ecuador ($M_S 7.8$), Burma($M_S 7.2$), and Afghanistan ($M_S 7.1$), which caused large total economic losses to the above countries. The large economic losses caused by natural disasters should be assessed more accurately for improving the awareness of disaster impacts and the higher ability of disaster prevention and mitigation.

The Total economic losses caused by disasters usually incorporate *the direct economic loss* (Algermissen S.T., 1984;Lijun S, 1998;Jiren L, 2003;Ming T, 2014) and *the indirect economic loss*. For the direct economic loss, it belongs to the physical damage when it occurs in an instant and the induced physical impact after the disaster (Cochrane, 1997).

For the indirect economic loss, it is generated by business interruption, imbalance between supply and demand, disorder between forward output and backward supply of sectors due to physical damage (Cochrane, 1997;FEMA, 2001). Its property of “invisible loss” makes it difficult to evaluate, but it cannot be ignored. Because indirect economic loss can increase, even outnumber direct economic loss along with the economic development, which underscore the significance of capturing the ripple effects accumulated along inter-regional and interindustrial linkages. The Input-Output (IO) model(Hallegatte et al., 2010;Wu et al., 2012;Hallegatte, 2014;Zhou et al., 2014;Xia et al., 2016) and Computable General Equilibrium (CGE) model(Rose and Liao, 2005;Guivarch et al., 2009;Xie et al., 2013;Rose, 2015) are two representative models which are commonly used to assess indirect economic loss.

However, most of the loss assessment methods only consider the overall loss value of the region (Xie et al., 2012), the losses in different regions inside the disaster-hit area have not yet been quantified. In modern city, the functional zoning have its own economic characteristics because of the industrial distribution, so there may be only one or two developed economic sectors existing in each functional zoning. If a catastrophe occurs, the direct economic losses of sectors will not evenly distributed inside the disaster-hit area due to the range of disaster impacts(Figure 1). In addition, as a result of the industrial linkage, the ripple effect of indirect economic loss can make a sector’s loss spread to other related sectors in other region (e.g. the production reduction of an automobile manufacturing sector increases the unintended inventory (or decreases production)

of steel sector in other region, eventually making its indirect economic loss increasing)(Figure 1). Therefore, there are obvious spatial heterogeneity in direct and indirect economic losses of sectors inside the disaster-hit area. The distribution of total losses are inconsistent in two disaster-hit areas with the similar economic development degree (or whole total losses).



5

Figure 1. The diagrammatic drawing of spatial heterogeneity and ripple effect (Notes: A and B represent two disaster-hit areas with different functional zoning, ~~DEL means direct economic loss, IEL means indirect economic loss~~. If a catastrophe with the same intensity hits, both suffers DEL of USD 10 billion, but the losses inside areas are different due to functional zoning and disaster location. For ripple effect of IEL, the indirect economic losses is not only impacted by the distance of disaster occurring, but is impacted by inter-regional and interindustrial linkages)

10

Much attention has been paid to assessing the total loss of the whole disaster-hit area, but further study on refined assessment of direct economic loss and ripple effect of indirect economic loss inside the area is crucial to revealing the comprehensive disaster impacts, though internal economic data is difficult to acquire and the assessment models are rare. The results of the above research will play a significant role in different aspects. For governments, the policy maker can make more refined post-disaster recovery and reconstruction policies, and give the sector's priority to recovery with closer industrial linkage to make the economic system recover to pre-disaster level faster. For the insurance firms, they can add insurance categories to increase profits, also enhance the economic resilience of economic system. For the public, people can fully aware of the long-term impact of disaster and thus may change their economic activities (e.g. real estate investment).

2008 Wenchuan earthquake (2008 WCE) is designated as the catastrophe in this paper because it is the most destructive natural disasters since the founding of China in 1949. Beijing (BJ), one of the most important and developed metropolises in China, is chosen to be the disaster-hit area due to its location which located at the North China seismic belt ([Figure 2](#)), and once occurred the earthquake (September 2nd 1679) with the same magnitude of 2008 WCE in the history. We introduce the sectors' direct economic losses caused by 2008 WCE into BJ through the reasonable assumption.

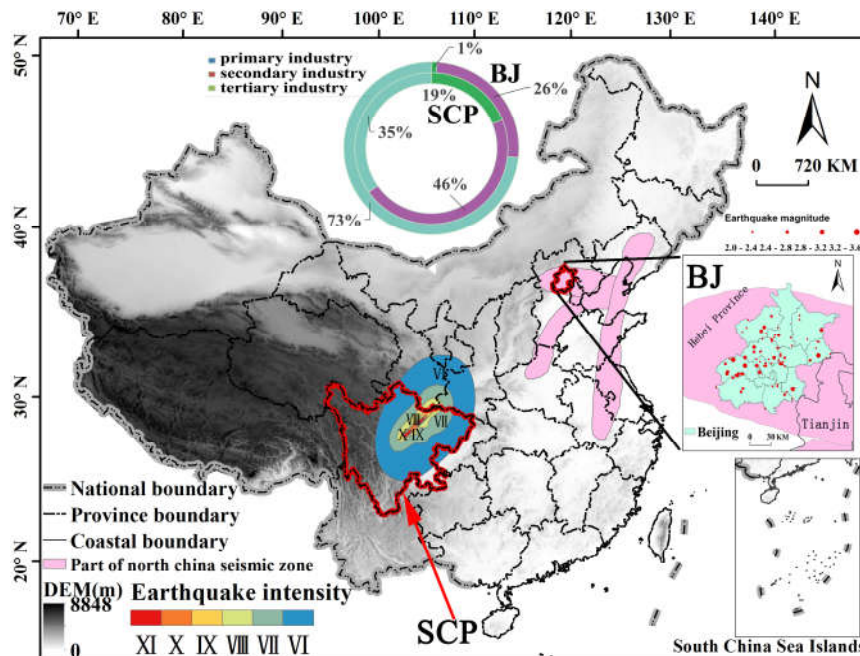
This paper is the first to assess and analyse the ripple effects of indirect economic loss and spatial heterogeneity of both direct and indirect economic loss inside the disaster-hit area at the scale of the smallest administrative divisions in China: streets (villages and towns) by means of the Adaptive Regional Input-Output (ARIO) model(Hallegatte, 2008) and Inter-regional ripple effect (IRRE) model.

This paper aims to decrease the long-term economic impacts caused by disasters and provide more comprehensive information for government to make better post-disaster recovery, disaster prevention and mitigation, rescue measures and funds allocation policies to the regions which may suffer seriously damage in the disaster aftermath.

2 Study area and Data

2.1 Study area

The 2008 Wenchuan earthquake (2008 WCE) is chosen in this paper as the catastrophe because it's an earthquake with the greatest magnitude and the highest damage degree since the founding of China in 1949, which affected 417 counties of 16 provinces and cities, with 69,226 people dead, and direct economic loss of USD 124 billion (the exchange rate of CNY to USD is 0.14 in 2008). According to all the affected provinces, Sichuan Province (SCP) suffered most serious disaster with the direct economic loss of USD 104.9 billion, accounting for 89% of the total losses (NCDR & MOST, 2008). The Wu's study(Wu et al., 2012) result shows that, indirect economic loss of SCP caused by the earthquake was about USD 42.1 billion, which was 40% of its direct economic loss. The potential impact of the disaster on indirect economic loss has aroused wide concern from both government and scholars (Rose et al., 1997;Okuyama, 2007;Li et al., 2013).



10 **Figure 2.** Sketch map of earthquakes in China, as well as the location of Beijing (BJ) and Sichuan province (SCP) (The top circle means the proportions of fixed asset stocks of primary, secondary and tertiary industry in BJ(outer ring) and SCP(inner ring). The pink area around BJ shows the north China earthquake zone; the size of red points on the map of BJ means the earthquake magnitudes and locations.)

Occurrence of an earthquake in a city may lead to more economic losses(Tantala et al., 2008;Hancilar et al., 2010). Therefore, we chose Beijing(BJ) as the disaster-hit area. Between 2002 and 2014, BJ occurred 74 earthquakes with the $M_S > 2$, mainly concentrated in Haidian District, Changping District and Shunyi District, as well as juncture between Mentougou District and Fangshan District(Figure 2).

2.2 Data

The data used in this study are mainly divided into three parts:

(1) Direct economic loss of BJ: The loss ratio of all sectors of SCP is taken as the scenario for direct economic loss of BJ.

5 The loss of SCP comes from National Disaster Reduction Committee-Ministry of Science and Technology, with a total of 17 sectors (NCDR and MOST, 2008). The specific calculation method is shown in the section 3.1.

(2) Input-output table: 42 sectors of Input-output Tables of BJ and SCP are acquired from the Bureau of Statistics of BJ and SCP respectively. Since input-output table is published once every 5 years in China (in the year ending with 2 and 7), and 2008 WCE occurred in the middle of 2008, so it is proper to use the latest 2007 input-output table to represent the industrial linkage among sectors. In order to match 2007 input-output table with the statistics loss data of 17 sectors which comes from
10 the National Commission for Disaster Reduction, the 42 sectors are reconsolidated into 17 sectors in accordance with the Industry Classification Standard of China.

(3) Number of enterprises, their total fixed assets and business incomes in 17 sectors within the smallest administrative divisions of streets/(villages and towns) of BJ: The data come from Beijing Macro Economic Social Development Basic Database. Because the time point of statistical data are not consistent, the administrative divisions of streets/(villages and
15 towns) are not consistent with statistical data in the database, some streets/(villages and towns) are consolidated, e.g. Yizhuang Region (including national economic development zone), etc.

3 Research methods

3.1 Setting up Scenario of direct economic

The reason for setting this scenario is that there is no direct economic loss of 17 sectors of Beijing (BJ) due to no real
20 disaster occurring. In order to solve this problem, The Scenario is set that: if an earthquake with the same intensity of 2008 Wenchuan earthquake (2008 WCE) occurs in BJ, and BJ has the same direct economic loss ratio of 17 sectors with that of Sichuan province (SCP). Before setting up Scenario, the economic conditions of two areas should be understood.

(1) Comparison of development between BJ and SCP

In terms of social and economic development degrees, SCP was categorized as a less developed region, its GDP was USD 175.1 billion (calculated based on 2008 constant price, the same below). BJ was categorized as a developed region, its GDP in 2008 was USD 146.8 billion, almost equivalent to the GDP of the whole province of SCP. Meanwhile, in 2008, per Capita GDP of BJ was 4.31 times of SCP, the fixed asset stocks was 2.09 times. The per capita GDP of SCP only ranks 24th of the 34 provinces and cities of China, while that of BJ ranks the second, and is almost more than double as the per capita of Upper Middle Income country (5511 USD in 2008, from World Bank). The population density of SCP is 168/km², which ranks 25th, and that of BJ is up to 1079/km², which ranks 4th. The proportion of the tertiary industry of BJ reached 73 percent. So, the developed secondary industry and tertiary industry as well as closer industrial linkage may lead to larger indirect economic loss is worthy of attention.

(2) Scenario of direct economic loss

The core thought of scenario of direct economic loss is that both areas have the same sector loss rates. The core formula of the scenario is calculated as followed:

$$DEL(BJ, n, 2008) = \frac{DEL(SCP, n, 2008)}{CAP(SCP, n, 2008)} \times CAP(BJ, n, 2008) \quad (1)$$

Where, $DEL(SCP (or BJ), n, 2008)$ is the direct economic losses of n^{th} sector of SCP (or BJ) after catastrophe. $CAP(SCP (or BJ), n, 2008)$ is fixed asset stock of n^{th} sector of SCP (or BJ) in 2008, The fixed assets stocks were calculated by the perpetual inventory method(Hall and Jones, 1999) according to the total investment in fixed assets of the whole society.

This method can visually reflect the shock of 2008 WCE on BJ under the scenario of same sector's loss ratio, and can reduce the calculation uncertainty of direct economic loss caused by different economic development degrees between two regions. The results are illustrated in the [Table 1](#). It can be found that, economic pattern of BJ was mainly dominated by the tertiary industry, while SCP was dominated by the secondary industry, and it was in an industrial transformation period.

Table 1. Calculation Results of stock of fixed assets and direct economic loss of two areas

ID	Sectors	Insdu- -stry	Fixed asset stocks		Loss Ratio	DEL	
			SCP	BJ		SCP	BJ
1	Agriculture	1	491.7	13.93	0.03	16.80	0.48
2	Mining Industry	2	138.69	18.73	0.10	14.00	1.89
3	Food Manufacturing & Tobacco process	2	138.61	28.97	0.18	25.20	5.27

4	Textile Manufacturing	2	34.65	10.71	0.18	6.30	1.95
5	Wood Processing & Furniture Manufacturing	2	34.65	23.09	0.18	6.30	4.20
6	Coke, Gas & Oil Process	2	10.40	31.24	0.08	0.84	2.52
7	Chemical Industry	2	97.03	68.33	0.18	17.50	12.32
8	Nonmetallic Mineral Manufacturing	2	41.58	17.81	0.18	7.56	3.24
9	Metallic Products Manufacturing	2	103.96	52.06	0.18	18.20	9.11
10	Mechanical Equipment Manufacturing	2	173.27	263.85	0.18	30.80	46.90
11	Electricity, Steam, Hot-water Production & Supply	2	623.59	265.27	0.18	112.00	47.64
12	Building Trade	2	32.96	30.98	0.11	3.50	3.29
13	Transportation, Post & Telecommunications	3	708.67	872.57	0.17	117.60	144.80
14	Commerce & Catering	3	78.10	89.83	0.16	12.60	14.49
15	Finance & Insurance	3	1082.59	869.16	0.14	154.00	123.64
16	Specific Service Management	3	126.37	428.71	0.07	8.40	28.50
17	Other Services	3	425.80	562.73	0.18	77.00	101.76

*Note: (1) unit: USD 0.1 billion. Calculated based on 2008 constant price, the same below; (2) SCP means Sichuan province, BJ means Beijing, DEL means direct economic loss.

(3) Setting up damage intensity scenarios of BJ

It can be seen from Figure 2, scope of the areas with seismic intensity higher than IX degree covers all districts and counties of BJ. Furthermore, due to lack of real loss data of BJ, if we add the seismic source location and the different seismic intensity ranges, the simulation uncertainty will be greatly increased instead. Therefore, we assume that the intensity of disaster damage is evenly distributed in the space, and neither seismic source location nor intensity attenuation range is set. The upper limit of the losses caused by a violent earthquake in BJ is given through such extreme assumption.

3.2 Setting rescue scenes

After a catastrophe, Chinese government's rescue policy are "concentrating the whole country's efforts on rescue at all costs", the rescue and reconstruction are led by the central government, which are not depend on the market (e.g. insurance). For recovery and reconstruction work of 2008 WCE, Chinese government provided 120% rescue efforts compare with pre-disaster production capacity(NCDR and MOST, 2008).With the consideration of importance of BJ and its economic development

degree, if a devastating earthquake occurs, rescue efforts may reach 150%, and recovery period may be shorter. For this purpose, three rescue efforts scenes are set and they are illustrated in the Table 2. Price elastic coefficient parameter is 0.9 (Wu et al., 2012; Xie et al., 2012). By comparison of indirect economic losses of BJ under different rescue scene, the necessity of improving rescue efforts is evaluated.

5 Rescue scene A: Natural recovery. Only satisfying the demand on its basic disaster relief, just depending on BJ's own economic structure and industrial linkage to make the economic system recovered to its pre-disaster level.

Rescue scene B: BJ is provided with 120 % of rescue efforts compare with pre-disaster production capacity according to the real rescue policy for 2008 WCE. Scene B1 is the maximization of production capacity accomplished within 6 months, and scene B2 is to improve the production capacity to maximum 3 months ahead of schedule of Scene B1.

10 Rescue scene C: BJ is provided with stronger rescue efforts (150%) and shorter production capacity improvement period (3months), considering the economic development degree, position, and importance of BJ.

Table 2. ARIO model parameters and parameter setting of different post-disaster rescue scenes of Beijing (BJ)

Parameter	Description	Scene A	Scene B		Scene C
			Scene B1	Scene B2	
a_b	Production capacity pre-disaster	100%	100%	100%	100%
a_{max}	Maximum production capacity post-disaster	-	120%	120%	150%
τ	Adaptation time	-	6 month	3 month	3 month
ξ	Price elastic coefficient	0.9	0.9	0.9	0.9

3.3 The assessment model of indirect economic loss

The paper utilized the Adaptive Regional Input-Output (ARIO) Model to dynamically assess the indirect economic loss. ARIO model was proposed by Hallegatte, and it was successfully applied to the assessment of indirect economic loss caused by 2005 Hurricane Katrina(Hallegatte, 2008, 2014), flood in Mumbai, India,(Ranger et al., 2010)and 2008 WCE (Wu et al, 2012). This model is based on traditional IO model, and combines some advantages of CGE model. CGE model considers many complicated factors based on nonlinear thought such as market feedback, price change, but it also demand detailed

statistical data and complicated process of parameter validation. These data are difficult to acquire at the scale of “urban” even “streets/ (villages and towns)”. Therefore, ARIO model is appropriate in this study. ~~At the same time~~ it takes a full consideration on economic characteristics after the disaster, such as the change of production capacity of various economic sectors, production bottleneck, and capacity restriction caused by the impact of production reduction, production halts, and industrial linkage between various sectors, to make a dynamic simulation on the change of balance of supply and demand of the economic system in the time period from catastrophes occurrence to the completion of reconstruction, so as to describe the impact of the disaster to the regional economy. The modeling time-step width is one month. Key parameters of the model (Table 2) and the core formula are illustrated as follows:

$$Y(j) = \underbrace{\sum_j A(i, j)Y(j)}_{\text{intermediate demand}} + \underbrace{LFD(i) + E(i) + HD(i) + \sum_j D(j, i)}_{\text{final demand}} \quad (2)$$

The parameter on the left side of the formula is the total output($Y(j)$), and parameters on the right side of the formula are the demand, including intermediate demand and final demand respectively. The cascading impact of disaster on economic system is reflected in: change of the demand (intermediate demand and LFD) within the disaster-hit areas and change of import (E) from the outside; increase of demands of households (HD) and commercial sectors (D); reduction (D) of production capacity caused by the reduction of capital, etc.

In order to better understand the ARIO model, some key parameters or processing step are explained: For the imports, the ARIO model copes with it from three aspects: i) improving the traditional IO table to the Local Input-Output (LIO) table based on the coefficient P_j , $P_j = (Production-Export) / (Production-Export + Import)$. The model multiplies the values of quadrant I and quadrant II of traditional IO table by coefficient P_j so as to remove the import part from the production and services of intermediate consumption/ inputs and final consumption; ii) setting substitutability of sectors: The model sets the substitutability of sectors based on the conditions that whether the sectors’ productions and services can be imported from the outside of disaster-hit area. This study sets the manufacturing sectors (#3-#10), construction sector (#12) and Transportation, Post & Telecommunications (#13) cannot be substituted, other sectors’ productions and services can be imported from the outside areas; iii) Imports changes during the reconstruction period: if a sectors can be substituted and its production capacity is insufficient, the import part is introduced. The imports amount depends on the relationship between

demand and production, the parameter of import delay. The specific formula is as follows:

$$I(j) + \frac{TD^t(i) - Y(i)}{TD^t(i)} A(j, i) \frac{\Delta t}{t_A^\downarrow} \xrightarrow{\Delta t} I(j) \quad (3)$$

5 The sector j is the sector who consumes the goods or services produced by sector i , $TD(i)$ and $Y(i)$ is the demand and production of sector i , A is the intermediate consumption, Δt is the time step of model, t_A^\downarrow is the parameter of import delay, and the initial $I(j)$ is the import of sector j at t^{th} month during reconstruction period, which is decided by the ratio of the production of t^{th} month and the production of pre-disaster. The formula is shown as follows:

$$I(t+1, j) = I(t, j) \times \frac{Y(t+1, j)}{Y(1, j)} \quad (4)$$

All these steps are calculated based on the LIO table and the dynamic changes of model, therefore, the imports factor is an endogenous variable.

10 For the change in price, it's also an endogenous variable, calculated in this study by the relationship between demand and production in the disaster aftermath. The ARIIO model assumes that commodity prices respond linearly to the production, and uses a single parameter of price inflation variable (parameter ξ in Table 2) for the economic system in applying these prices. Therefore, the change in prices do not strongly feed back into the simulation results. However, The Chinese government will strictly control the changes in price, avoiding the serious inflation in the disaster aftermath. As a results that
15 these assumptions accord with the characteristics of rescue system of Chinese government after the catastrophe. The price inflation variable is exogenous because it changes with the different economic systems of disaster-hit areas.

3.4 The Spatial diffusion (SDN) model of direct economic loss

Direct economic loss is mainly caused by the damage of fixed assets, belonging to inventory change. And as mentioned in the section 3.4, this study assumes the intensity of disaster damage is evenly distributed in the space of Beijing. Therefore, by
20 utilizing the stock of fixed assets data of the streets/ (villages and towns) of BJ, post-disaster direct economic loss can is spatial extended into areas of 321 streets/(villages and towns). The core of formula of SDN model is as follows:

$$DEL_{str}(p) = \frac{CAP_{str}(p)}{CAP_{BJ}} \times DEL_{BJ}(p=1,2,3 \dots n)$$

(35)

Where $DEL_{str}(p)$ is direct economic loss of p^{th} street of BJ, $CAP_{str}(p)$ stands for the stock of fixed assets of p^{th} street, DEL_{BJ}/CAP_{BJ} stands for direct economic loss/stock of fixed asset of BJ, and n stands for 321 streets/ (villages and towns) of BJ. The stock of fixed asset is used in SDN model because that: i) the stock of fixed asset belongs to the concept of “stock”, which is in line with the nature of direct economic loss. And the replacement costs of stock of fixed assets account for the most in the statistical components of direct economic loss; ii) the core idea of the feedback of the production capacity of economic system in the ARIO model is that production capacities of sectors decreases x% when the stocks of fixed assets decreases x% caused by the disaster. Therefore, the using the sectors’ stocks of fixed asset not only accords with the statistical significance of direct economic loss, but also the simulated mechanism of ARIO model.

3.5 The inter-regional ripple effect (IRRE) model of indirect economic loss

Indirect economic loss is mainly caused by the production reduction and industrial linkage of various economic sectors, belonging to flow change. Therefore, according to business income of sectors of streets/ (villages and towns), the ripple effects among sectors can be assessed at 321 streets/(villages and towns). The core of formula of IRRE model is shown as the following:

$$IEL_{str}(p, s, \alpha_{\max}) = \frac{BIN_{str}(p, s)}{BIN_{BJ}(s)} \times IEL_{BJ}(s, \alpha_{\max})(p=1,2,3 \dots n; \alpha_{\max} = 100\%, 120\%, 150\%)$$

(46)

Where, IEL_{str} stands for indirect economic loss of streets/(villages and towns), BIN_{str} stands for business income of streets/(villages and towns), BIN_{BJ}/IEL_{BJ} stands for business income and indirect economic loss respectively, p stands for p^{th} street, s stands for s^{th} sector, α_{\max} stands for three different rescue efforts scenes. The business income is used in IRRE model because that: i) the business income is the flow data, which is in line with concept of “flow” of indirect economic loss; ii) in the earthquake disaster aftermath, the production reduction due to the limitation of production capacity, production

bottleneck, and industrial linkage can be reflected in the business income of the affected year. The business income of a sector will be greatly affected if that sector suffers large indirect economic loss. Therefore, it's reasonable to use business income in the IRRE model.

According to established IRRE model, the former studies that only obtain the direct and indirect economic loss of a whole region, without more specific losses information inside the region can be resolved. we can not only accurately spread the post-disaster losses from the whole city to districts-streets/(villages and towns), which not only helps to understand spatial heterogeneity of the losses, but also can propose "uneven" post-disaster recovery measures by analyzing the relationship between direct and indirect economic loss of sectors in various streets, to help the government find out optimal recovery and reconstruction solutions for different areas by choosing either increasing rescue efforts to improve production capacity, or importing substitutes product from outside, so as to achieve a quicker recovery to the post-disaster level.

4 Results of loss assessment

4.1 Assessment results of overall losses under rescue scenes

According to the results of simulation, under an extreme scenario, Beijing (BJ) is likely to suffer the USD 150.6 billion (the exchange rate of CNY to USD is 0.14 in 2008) of total loss, including USD 88.1 billion of direct economic loss and USD 62.5 billion of indirect economic loss (Table 3). ~~The indirect economic loss accounts for 41.5% of total loss, and almost the same as the indirect economic loss.~~ The indirect economic loss accounts for 41.5% of total loss, and is almost the same as the indirect economic loss. ~~The total loss has exceeded the 2.6% of BJ's GDP of 2008, and accounted for 3.6% of the national GDP of 2008.~~ The total loss has exceeded the 2.6% of BJ's GDP in 2008, and accounts for 3.6% of the national GDP of 2008. During the 6 years after the catastrophe occurred (2008-2014), the average annual GDP growth rate of BJ could be decreased from 8.55% to 4.91%, the decreasing value ~~is~~ was up to 3.63%, however, the goal for GDP growth rate of BJ was 8%, therefore the economic impact caused by the catastrophe ~~can~~ seriously impeded the sustainable development in the future (Table 4).

Table 3. Evaluation results of indirect economic loss of Beijing (BJ) under different rescue scenes

Rescue Scenes	DEL*	IEL*	DEL*	IEL*	IEL*
---------------	------	------	------	------	------

	(billion USD)	(billion USD)	/Total loss	/Total loss	/DEL*
Scene A	88.1	62.5	58%	42%	71%
Scene B1	88.1	41.2	68%	32%	47%
Scene B2	88.1	37.1	70%	30%	42%
Scene C	88.1	17.5	83%	17%	20%

*Note: DEL means direct economic loss.

The Table 3 shows that, along with the intensifying rescue efforts, the indirect economic loss decreases gradually and thus the total losses decrease. When rescue efforts intensify from rescue scene A(natural recovery) to rescue scene C(150% of rescue efforts), the indirect economic loss is reduced by USD 45.1 billion, and the percentage of indirect economic loss to total losses is reduced from 42% to 17%. By comparing the value of “IEL/ DEL”, it can be seen that, when BJ suffers USD 100 CNY of direct economic loss, its indirect economic loss is reduced from USD 71 CNY of rescue scene A to USD 20 CNY of rescue scene C.

Where does the reduced USD 51 CNY of indirect economic loss come from? We can figure it out by further analyzing the reasons: after disaster, damage of fixed assets leads to the inevitable outcome of reduction of production capacity, and the impact of industrial linkage on production capacity could be large or small. However, BJ is featured with strong industrial linkage, which brings difficult economic recovery, long recovery period, and slow capital accumulation. Under the same rescue efforts, when the time for improve production capacity to maximization is 3 months ahead of schedule (scene from B1 to B2), the indirect economic loss reduces by USD 5 CNY; under the same recovery period of 3 months, when rescue efforts increase by 30% (scene from B2 to C), the indirect economic loss will reduce by USD 22 CNY.

Table 4. The comparison of GDP growth rate between no catastrophe and assessment result under scene A six years after the catastrophe occurred

GDP growth rate	2009	2010	2011	2012	2013	2014	average
No catastrophe	10.2%	10.3%	8.1%	7.7%	7.7%	7.3%	8.55%
Catastrophe occurred	-1.1%	4.3%	5.3%	6.5%	7.3%	7.2%	4.92%

In conclusion, rescue efforts play a more important role in the post-disaster recovery and reconstruction. It’s necessary to study how to properly use and scientifically allocate rescue and recovery funds according to the losses of different regions and different economic sectors. Therefore, the study will conduct an in-depth comparative analysis of the ripple effects of indirect economic loss and spatial heterogeneity of direct economic loss in the next section.

4.2 Spatial heterogeneity of direct economic loss and ripple effects of indirect economic loss

The losses are closely associated with the economic development of various regions of BJ, so they are not evenly distributed. If rescue funds are evenly distributed according to the total losses without considering spatial differences of specific losses, it is likely to cause improper allocation of funds and reduce rescue efficiency, which is not conducive to post-disaster recovery and reconstruction.

(1) Differences of direct and indirect economic loss on the various districts

Statistics losses data on the spatial scales of districts/counties are based on those of streets/(villages and towns), which can be found in a macro perspective (Figure 3). The three administrative districts with the most serious direct economic loss are Haidian District (USD 21.4 billion), Xicheng District (USD 17.3 billion), and Chaoyang District (USD 12.9 billion), while the three administrative districts with the most serious indirect economic loss are Chaoyang District (USD 9.8 billion), Haidian District (USD 8.6 billion), and Xicheng District (USD 6.4 billion). Among which, the indirect economic loss of Chaoyang District accounts for 76% of its direct economic loss, and ~~its~~ the total economic losses is 1.76 times of its direct economic loss. Besides, although the indirect economic loss of Chaoyang District is less than that of Haidian District, its indirect economic loss is USD 1.2 billion higher than that of Haidian District due to its developed tertiary industry and strong industrial linkages, demonstrating that, indirect economic loss is relatively higher in economically developed regions, so it shall not be ignored in those more developed regions.

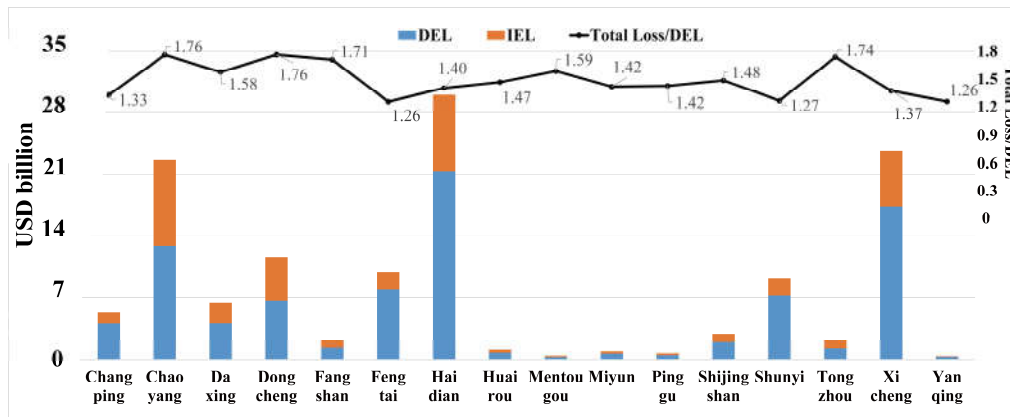


Figure 3. Direct and indirect economic loss of districts of Beijing (BJ), and ratios between total losses and direct economic loss (Notes: DEL means direct economic loss, and IEL means indirect economic loss)

In addition to the ratio of total losses and direct economic loss in Chaoyang District reaching 1.76, the ratios in Dongcheng District, Fangshan District, and Tongzhou District are also higher than 1.70. The total losses of Fangshan District and Tongzhou District are relatively less due to their relative poor economic development, but according to the current industry structure and development planning, the government shall pay high attention to the establishment of sufficient disaster prevention and mitigation plans as well as recovery and reconstruction strategies in case of occurrence of catastrophe in the future.

(2) Spatial heterogeneity of direct and indirect economic loss

It can be seen from [Figure 4](#), firstly, direct and indirect economic loss are mainly concentrated in main urban areas (Dongcheng District, Xicheng District, Haidian district, Chaoyang District, Shijingshan District, and Fengtai District). The longer the distance to the main urban areas is, the smaller the losses will be. Secondly, according to spatial distribution, even though the indirect economic loss is smaller than direct economic loss, the indirect economic loss of some streets/ (villages and towns) are higher than their corresponding direct economic loss. Therefore, the result shows that even though the indirect economic loss of a region is smaller than direct economic loss, some places inside the region may greater than direct economic loss. The result can help the government confirm the important rescue places with more clearly. Thirdly, according to spatial agglomeration degree ([Figure 4](#)), the spatial aggregation of direct economic loss is 0.14 (Moran's index), and that of indirect economic loss is 0.27 (Moran's index), both are significant at the 99 percent significant level. Therefore, the spatial distribution of high value of indirect economic loss is more concentrated in the city center, while distribution with high direct economic loss value are relatively distributed dispersedly.

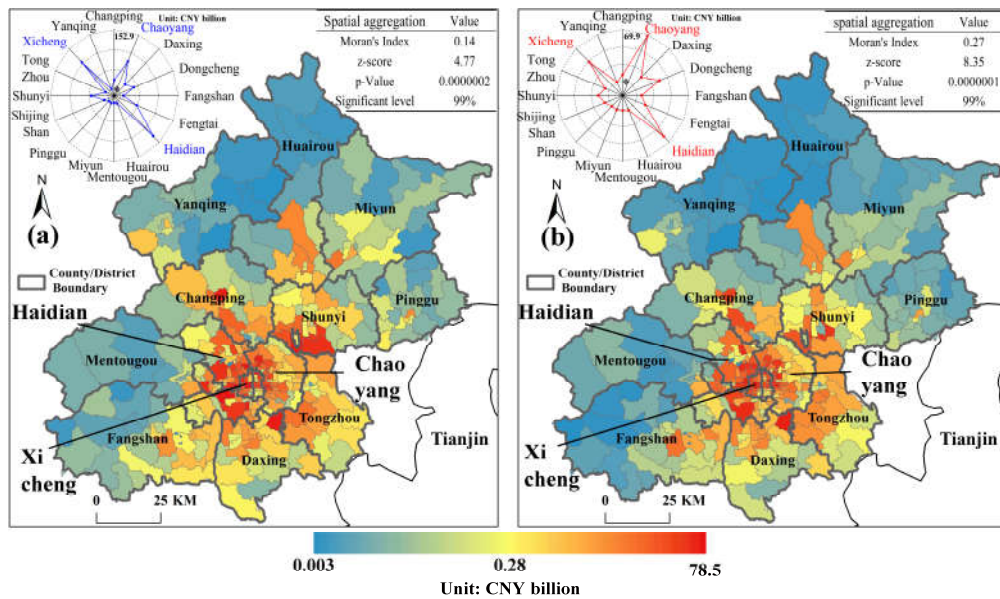


Figure 4. Spatial heterogeneity of direct economic loss (a) and ripple effects (b) of indirect economic loss (The rose diagram in the upper left-hand corner of Figure represents loss values of districts. The table in the upper right-hand corner of Figure represents the results of spatial aggregation calculated by the method of Spatial Autocorrelation (Moran's I). the global Moran's I is an index to measure spatial correlation, which is more obvious when its value is closer to 1. The z-score and p-Value are used to judge confidence coefficient level, the results show that both of spatial aggregation of DEL and IEL exceed the 99% confidence interval.)

The reasons may include: 1) Direct economic loss is mainly generated by the damage of fixed assets and according to the spatial structure planning of BJ of "Two-axis, two-belt, and multiple centers"(Song, 2009), most of traditional manufacture enterprises has been moved outside the city center, so the fixed assets values of peripheral districts are relatively high, and the post-disaster direct economic loss is higher in these districts; 2) BJ has a developed tertiary industry, which accounts for 77.9% of the total GDP of the city, and a affected by the population and commercial distribution, the tertiary industry is mainly distributed in the city center, so the spatial distribution of the tertiary industry is mainly concentrated in the city center.

4.3 Analysis of ripple effects of indirect economic loss and optimal recovery measures

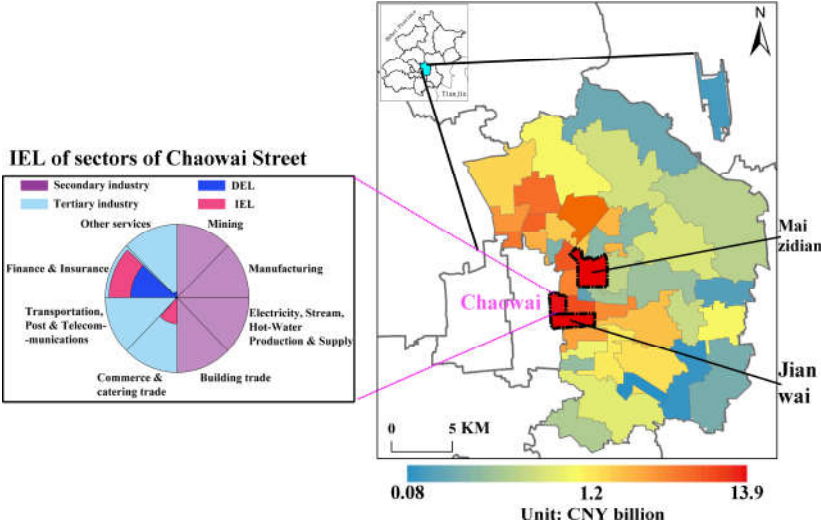
Chaoyang District suffers the highest indirect economic loss, so the analysis is made by taking Chaoyang District as an example. Areas with high value in Chaoyang District are mainly concentrated between the East 2nd Ring Road and the

East 3rd Ring Road, and the three streets with the highest value are Chaowai Street (USD 1.6 billion), Jianwai Street (USD 1.5 billion), and Maizidian Street (USD 0.9 billion). Among them, the indirect economic loss of Chaowai Street is higher than its direct economic loss (USD 0.6 billion), and it is 2.6 times of its direct economic loss. According to the IRRE model, the reason for high indirect economic loss of Chaowai Street can be further analyzed through its various sectors. The indirect economic loss of Chaowai Street is mainly focused on the tertiary industry such as Commerce & Catering industry (#14) as well as Finance & Insurance industry (#15) (Figure 5). The indirect economic loss of Commerce & Catering industry (#14) is 39 times of its direct economic loss, ~~accounting-accounts~~ for 25% of total indirect economic loss of Chaowai Street. The indirect economic loss of Finance & Insurance industry (#15) of the street is 1.46 times of its direct economic loss, ~~accounting-accounts~~ for 68% of the losses of the street. Government ~~departments~~ should pay attention to these two sectors when making post-disaster recovery and reconstruction policy for Chaowai Street.

In terms of the optimal recovery measure for Commerce & Catering industry (#14), due to its small direct economic loss, its indirect economic loss is mainly caused by industrial linkage, so measure to increase market demands can be taken to pull the economic growth in order to speed up its recovery; In terms of optimal recovery measure for Finance & Insurance industry (#15), government shall consider the post-disaster recovery of the overall economic system. ~~Due to i)~~ the severe damage of fixed assets of the secondary industry, ~~leads to the~~ seriously inadequate intermediate input; ~~ii) the~~ decrease of the demands of downstream industries, ~~leads to the~~ and decrease of production ~~and-or the~~ increase of inventory of the secondary industry may be ~~one of~~ the two major reasons to cause the increase of the indirect economic loss of the tertiary industry. When government ~~making-makes~~ the recovery and reconstruction policy, it is suggested ~~to~~ not only to consider the impact of industrial linkage, but also ~~need~~ to promote the post-disaster production capacity of the secondary industry, which can promote BJ's economic system recover to the pre-disaster level. In addition, the industries distributed in Chaoyang district are mainly tertiary industry, so industrial structure of Chaoyang is also mainly dominated by the tertiary industry, once a great disaster occurs, the high loss value of this district will be mainly caused by the losses of the tertiary industry.

Besides, the manufacturing industry (automobile manufacturing) is mainly distributed in districts such as Shunyi District, and ~~their~~ the industrial structure of this District is also mainly dominated by the secondary industry, so the majority of total losses in ~~this district~~ Shunyi District are the losses of the secondary industry. Therefore, industrial distribution and industrial

structure are key elements for determining the size of indirect economic loss of a region. In the course of post-disaster recovery and reconstruction, government departments need to take different recovery measures according to the industrial distributions and structures of different regions.



5 **Figure 5.** The right figure: the ripple effect of indirect economic loss (IEL) of Chaoyang District; The left figure: direct (DEL) and indirect (IEL) economic loss of sectors of the secondary industry and the tertiary industry of Chaowai Street

By analyzing ripple effects, the overall loss can be spatially extended into each street, and sectors' losses in each street can be further evaluated, which helps government policy-makers to intuitively get the information about the loss distribution, so as to properly allocate rescue efforts when taking recovery measures.

4.4 The ripple effects under different rescue scenes

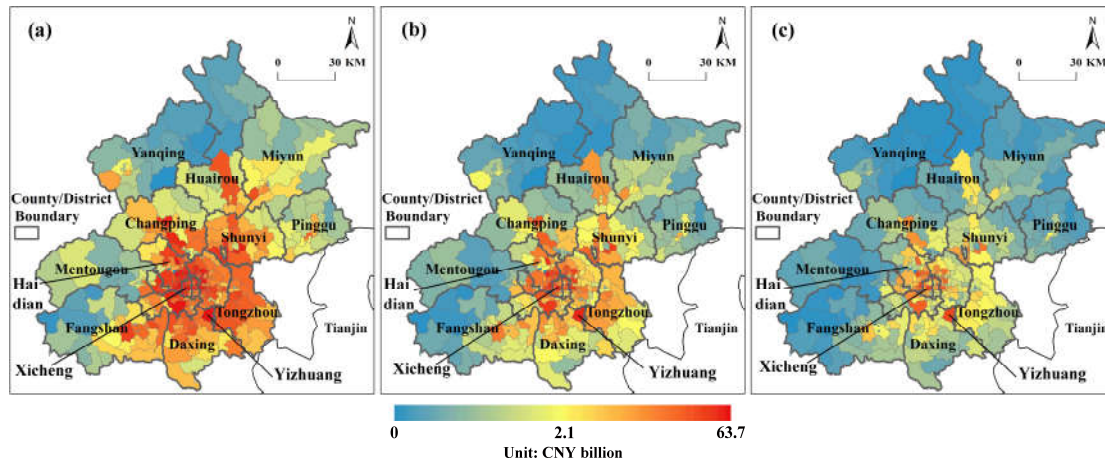


Figure 6. Evaluation results of indirect economic loss of streets/(villages and towns) of Beijing (BJ) under different rescue scenes [\(Figure \(a\): under scene A; Figure \(b\): under scene B1; Figure \(c\): under scene C\)](#)

5 According to the IRRE model, the spatial distribution of indirect economic loss under three post-disaster rescue scenes in BJ are illustrated in the [Figure 6](#).

Under the rescue scene A of natural recovery, no rescue support will be given to the BJ's economic system, and recovery will be accomplished by relying on its own economic structure and industrial linkage, so its reconstruction and recovery period will be relatively longer with larger economic losses. It can be seen that the areas with high losses ([Figure 6a](#)) are mainly distributed in the city center of BJ, and the areas with the most severe losses are concentrated in the regions such as Xicheng District and Haidian District, and extended to the regions such as Changping District, Shunyi District, Tongzhou District, Fangshan District, etc. Under rescue effort scene B (scene B1: 120%, 6 months), due to the introduction of external recovery funds, and a series of recovery measures taken for economic system such as improving production capacity, substitution by increasing imports from outside, the overall loss is reduced. Spatially, indirect economic loss of various regions shows a decrease, and only some streets/ (villages and towns) see relatively high losses. The areas with high losses mainly concentrated on city center areas, such as Xicheng District and Haidian District([Figure 6b](#)). Under rescue effort scene C, the losses of each region are further reduced, but the spatial heterogeneity shows an obvious difference between high value loss and low value loss. ([Figure 6c](#)) The high value regions like Yizhuang region (including Economic Development Zone) still have-suffer losses

10

15

without showing much decrease along with the improving rescue effort ~~improving~~, while the losses of other regions reduce significantly. Compared with rescue scene A, post-disaster affected areas* under rescue scene C is reduced by 4,364 km², accounting for 26.6% of the total area of BJ. It indicates that when the rescue effort is increased to 150% within 3 months ahead of schedule, fixed assets of various economic sectors can be recovered with the fastest speed, and the industrial linkage is established rapidly, which will help the BJ's economic system faster recover and finish reconstruction.

*Notes: Affected area calculation is based on disaster magnitude (Freckleton et al., 2012). According to the Geometrical Interval spatial-based segmentation algorithm in GIS, the loss data of four scenes is categorized into five grades of catastrophe (USD 3.75 billion), disaster (USD 0.65 billion), medium disaster (USD 0.11 billion), small disaster (USD 0.019 billion), micro disaster (USD 0.003 billion). The regions involved in corresponding indirect economic loss of disasters with the grade higher than micro disaster is defined as the post-disaster affected areas.

5 Conclusion

In order to reduce the long-term economic impacts caused by disasters and accelerate the economic recovery in the disaster aftermath, this paper sets two scenarios and three models to calculate and analyse the spatial heterogeneity of direct economic loss and ripple effects of indirect economic loss at streets/(villages and towns) of BJ. We set the scenarios of direct economic loss to introduce the sectors' loss caused by 2008 WCE into BJ, set rescue scenes to assess the necessity of improving rescue efforts, adopted ARIO model to evaluate the indirect economic loss of BJ, established SDN model and IRRE model to assess the direct and indirect economic loss of 321 streets/(villages and towns) of BJ. The results indicate that high value of indirect economic loss is more concentrated in the centre of BJ compared with that of direct economic loss. Finance & Insurance industry (#15) of Chaowai Street in Chaoyang district suffers the most serious indirect economic loss. During the six years after catastrophe occurred (2008-2014), the average annual GDP growth rate of BJ could be decreased from 8.55% to 4.91%, In terms of the 8% of BJ's GDP growth rate target, it's a significant and noticeable economic impact.

Before the disaster, attention shall be paid to the adjustment and optimization of industrial structure; In disaster emergency rescue stage, attention shall be paid to the transportation of relief material allocation; during post-disaster recovery and reconstruction stage, attention shall be paid to give the priority to the development of the industries with high industrial linkage coefficient, so as to speed up the economic recovery. Therefore, adjustment of industrial structure and strengthen of

industrial linkage can mitigate the impact caused by natural disasters. Besides, optimization of industrial structure, and close industrial linkage is of great significance in regional growth. In order to achieve sustainable development of a region, a balanced point between economic development and disaster mitigation must be found, and by taking it as a reference, a strategy for the optimization and adjustment of industrial structure shall be established. The results can provide the scientific and effective support to find the above “balanced point” according to increase rescue effort and to priority support the industries which are located in the seriously damaged regions.

Acknowledgement The financial support provided by National Key Research and Development Program--Global Change and Mitigation Project: Global change risk of population and economic system: mechanism and assessment, NO. 2016YFA0602403; [Beijing Municipal Natural Science Foundation, NO. 9172010](#); [Major Program of National Natural Science Foundation of China No. 91325302](#); National Basic Program of China (973 Program), NO. 2012CB955402; National Key R&D Program (2016YFA0602604); National Natural Science Foundation of China (No. 41171401, No. 41101506); The Fundamental Research Funds for the Central Universities, NO. 310421101.

References

- Algermissen S.T., S. K. V.: Seismic Hazard and Risk Assessment : Some Case Studies, The Geneva Papers on Risk and Insurance, 9, 17, 1984.
- Cochrane, H. C.: Forecasting the economic impact of a Midwest earthquake, University at Buffalo Institutional Repository MCEER Technical Reports, 223-247, 1997.
- Freckleton, D., Heaslip, K., Louisell, W., and Collura, J.: Evaluation of transportation network resiliency with consideration for disaster magnitude, 91st annual meeting of the transportation research board, Washington, DC, 2012.
- Guivarch, C., Hallegatte, S., and Crassous, R.: The resilience of the Indian economy to rising oil prices as a validation test for a global energy-environment-economy CGE model, Energ Policy, 37, 4259-4266, 10.1016/j.enpol.2009.05.025, 2009.
- Hall, R., and Jones, C.: Why Do Some Countries Produce So Much More Output per Worker than Others?, 10.3386/w6564, 1999.
- Hallegatte, S.: An adaptive regional input-output model and its application to the assessment of the economic cost of Katrina, Risk Anal, 28, 779-799, 10.1111/j.1539-6924.2008.01046.x, 2008.
- Hallegatte, S., Ranger, N., Mestre, O., Dumas, P., Corfee-Morlot, J., Herweijer, C., and Wood, R. M.: Assessing climate

- change impacts, sea level rise and storm surge risk in port cities: a case study on Copenhagen, *Climatic Change*, 104, 113-137, 10.1007/s10584-010-9978-3, 2010.
- Hallegatte, S.: Modeling the Role of Inventories and Heterogeneity in the Assessment of the Economic Costs of Natural Disasters, *Risk Anal*, 34, 152-167, 10.1111/risa.12090, 2014.
- 5 Hancilar, U., Tuzun, C., Yenidogan, C., and Erdik, M.: ELER software – a new tool for urban earthquake loss assessment, *Natural Hazards and Earth System Science*, 10, 2677-2696, 10.5194/nhess-10-2677-2010, 2010.
- Jiren L, Z. Z., Shifeng H, et al: Research of flood and waterlogging loss assessment model based on distribution social-economic database, *Journal of China Institute of Water Resources and Hydropower Research*, 1, 7, 2003.
- Li, J., Crawford Brown, D., Syddall, M., and Guan, D.: Modeling Imbalanced Economic Recovery Following a Natural
10 Disaster Using Input-Output Analysis, *Risk Anal*, 33, 1908-1923, 2013.
- Lijun S, Y. Z., Weihua H, et al: Discussion on the disaster assessment method of ensuing earthquakes, *International Earthquake*, 12, 6, 10.16256/j.issn.1001-8956.1998.03.016, 1998.
- Ming T, J. L., Shuai L, et al.: Hazard investigation and analysis of the Yutian earthquake with MS 7.3 on February 12, 2014, *Earthquake research in China*, 30, 10, 1001-4683(2014)02-0233-10, 2014.
- 15 Munich, R.: Annual Review: Natural Catastrophes, Munich: Munich Reinsurance Company, 2002.
- NCDR (National Commission for Disaster Reduction), M. M. o. S. a. T. o. C.: Wenchuan earthquake disaster—a comprehensive analysis and evaluation, Science Press, Beijing, 2008.
- Okuyama, Y.: Economic modeling for disaster impact analysis: past, present, and future, *Econ Syst Res*, 19, 115-124, 2007.
- Ranger, N., Hallegatte, S., Bhattacharya, S., Bachu, M., Priya, S., Dhore, K., Rafique, F., Mathur, P., Naville, N., Henriët, F.,
20 Herweijer, C., Pohit, S., and Corfee-Morlot, J.: An assessment of the potential impact of climate change on flood risk in Mumbai, *Climatic Change*, 104, 139-167, 10.1007/s10584-010-9979-2, 2010.
- Rose, A., Benavides, J., Chang, S. E., Szczesniak, P., and Lim, D.: The regional economic impact of an earthquake: Direct and indirect effects of electricity lifeline disruptions, *J Regional Sci*, 37, 437-458, 1997.
- Rose, A., and Liao, S.-Y.: Modeling Regional Economic Resilience to Disasters: A Computable General Equilibrium
25 Analysis of Water Service Disruptions*, *J Regional Sci*, 45, 75-112, 10.1111/j.0022-4146.2005.00365.x, 2005.
- Rose, A.: Macroeconomic consequences of terrorist attacks: estimation for the analysis of policies and rules, 172-200, 10.4337/9781784711085.00016, 2015.
- Song, H.: Research on the New Urban Spatial Structure in Beijing City Master Planning, *Urban Stud*, 3, 006, 2009.
- Tantala, M. W., Nordenson, G. J. P., Deodatis, G., and Jacob, K.: Earthquake loss estimation for the New York City
30 Metropolitan Region, *Soil Dynamics and Earthquake Engineering*, 28, 812-835, 10.1016/j.soildyn.2007.10.012, 2008.
- Wu, J., Li, N., Hallegatte, S., Shi, P., Hu, A., and Liu, X.: Regional indirect economic impact evaluation of the 2008 Wenchuan Earthquake, *Environmental Earth Sciences*, 65, 161-172, 10.1007/s12665-011-1078-9, 2012.
- Xia, Y., Guan, D., Jiang, X., Peng, L., Schroeder, H., and Zhang, Q.: Assessment of socioeconomic costs to China's air pollution, *Atmospheric Environment*, 139, 147-156, 10.1016/j.atmosenv.2016.05.036, 2016.
- 35 Xie, W., Li, N., Wu, J. D., and Liu, X. Q.: Evaluation of indirect loss from hypothetical catastrophes in two regions with different economic development levels in China, *Nat Hazard Earth Sys*, 12, 3325-3335, 10.5194/nhess-12-3325-2012, 2012.

Xie, W., Li, N., Li, C., Wu, J.-d., Hu, A., and Hao, X.: Quantifying cascading effects triggered by disrupted transportation due to the Great 2008 Chinese Ice Storm: implications for disaster risk management, *Nat Hazards*, 70, 337-352, 10.1007/s11069-013-0813-9, 2013.

5 Zhou, F.-b., Wang, X.-x., and Liu, Y.-k.: Gas drainage efficiency: an input–output model for evaluating gas drainage projects, *Nat Hazards*, 74, 989-1005, 10.1007/s11069-014-1224-2, 2014.