

High-resolution modelling of atmospheric dispersion of dense gas using TWODEE-2.1: application to the 1986 Lake Nyos limnic eruption

Arnau Folch¹, Jordi Barcons¹, Tomofumi Kozono², and Antonio Costa³

¹Barcelona Supercomputing Center (BSC), Barcelona, Spain

²Department of Geophysics, Graduate School of Science, Tohoku University, Japan

³Istituto Nazionale di Geofisica e Vulcanologia (INGV), Bologna, Italy

Correspondence to: Arnau Folch (afolch@bsc.es)

Abstract. Atmospheric dispersal of a gas denser than air can threaten the environment and surrounding communities if the terrain and meteorological conditions favor its accumulation in topographic depressions, thereby reaching toxic concentration levels. Numerical modelling of atmospheric gas dispersion constitutes a useful tool for gas hazard assessment studies, essential for planning risk mitigation actions. In complex terrains, microscale winds and local orographic features can have a strong influence on the gas cloud behaviour, potentially leading to inaccurate results if not captured by coarser-scale modelling. We introduce a methodology for microscale wind field characterisation based on transfer functions that couple a mesoscale Numerical Weather Prediction Model with a microscale Computational Fluid Dynamics (CFD) model for the atmospheric boundary layer. The resulting time-dependent high-resolution microscale wind field is used as input for a shallow-layer gas dispersal model (TWODEE-2.1) to simulate the time evolution of CO_2 gas concentration at different heights above the terrain.

The strategy is applied to review simulations of the 1986 Lake Nyos event in Cameroon, where a huge CO_2 cloud released by a limnic eruption spread downslopes from the lake suffocating thousands of people and animals across the Nyos and adjacent secondary valleys. Besides several new features introduced in the new version of the gas dispersal code (TWODEE-2.1), we have also implemented a novel impact criterion based on the percentage of human fatalities depending on CO_2 concentration and exposure time. New model results are quantitatively validated using the reported percentage of fatalities at several locations.

The comparison with previous simulations that assumed coarser-scale steady winds and topography illustrates the importance of high-resolution modelling in complex terrains.

1 Introduction

The atmospheric dispersion of gases (of natural, accidental or intentional origins) can be very hazardous to life and the environment. In industry, historic examples of tragic accidents include the dioxin release in Seveso (Italy, 1976), the methyl isocyanate in Bhopal (India, 1984) or the petroleum gas explosions in Mexico City (Mexico, 1984), among several others (e.g. Britter, 1989). From the point of view of natural hazards, cold CO_2 gas released from natural Earth degassing can be of concern because, being denser than air at standard temperature and pressure (STP), CO_2 gas clouds hug the ground and spread

downslopes governed by local topography and near-surface winds. Under particular conditions (*e.g.* atmospheric stability), gas can accumulate in topographic depressions reaching concentration levels toxic for humans and animals. For example, many gas manifestations in Central and South Italy, characterised by persistent CO_2 emissions, have caused several periodic accidents (Chiodini et al., 2004). Another case of natural origin, much rarer than diffuse emissions but potentially much more hazardous, are limnic eruptions triggered during overturning of CO_2 rich volcanic lakes (*e.g.* Zhang, 1996), such as the eruptions occurred at lakes Monoun and Nyos (Cameroon) in 1984 and 1986, respectively.

The most tragic event occurred on 21 August 1986 at Lake Nyos, when a CO_2 gas cloud spread across the surrounding valleys suffocating inhabitants and animals. On occasion of the 30th anniversary of this disaster, the Commission on Volcanic Lakes of the International Association of Volcanology and Chemistry of the Earth's Interior (IAVCEI) organised the workshop "30 years of Lake Nyos disaster" (Yaounde, 14-20 March 2016) to gather scientific experts from several disciplines with the objective of reviewing the groundbreaking research advances in that field and discuss future roadmaps for research and risk assessment and mitigation (Rouwet et al., 2016). One of the outcomes from this workshop was that, despite the successful mitigation measures taken at these two lakes (*e.g.* installation of degassing pipes, relocation of local communities to safer settlements, etc.) have reduced the level of hazard notably, there is no yet a quantitative hazard assessment from volcanic lakes at Cameroon and elsewhere in Africa (*e.g.* lake Kivu in Democratic Republic of Congo and Rwanda). In this regard, dense gas dispersal simulations and characterisation of eruption/gas emission scenarios constitute the backbone of a probabilistic quantitative hazard assessment.

Few studies have been conducted to simulate atmospheric dispersion of dense CO_2 clouds from natural Earth degassing (*e.g.* Pierret et al., 1992; Costa et al., 2005, 2008; Chiodini et al., 2010; Costa and Chiodini, 2015; Burton et al., 2017). In particular, Costa and Chiodini (2015) have recently used the TWODEE-2.0 model (Hankin and Britter, 1999; Folch et al., 2009) to simulate the CO_2 cloud from the 21 August 1986 lake Nyos limnic eruption considering various scenarios for cloud volume and eruption duration estimated from previous studies (Evans et al., 1994; Kanari, 1989; Tuttle et al., 1987). For their simulations, Costa and Chiodini (2015) considered a digital terrain elevation model with a resolution of 90m. Results evidenced the strong effect of the topography and local wind field, leading to different gas flow patterns across the different valleys of the complex topography of the area. Despite some scenarios could reproduce lethal CO_2 concentrations in many of the sites where fatalities did actually occur, these simulations were unable to capture the full dispersal pattern given some model limitations including, but not limited to, steady winds and gas emission rates or insufficient accuracy of near surface winds. This later aspect is particularly critical on very complex terrains, where local-scale (tens of m) wind patterns and the resolution of the Digital Elevation Model (DEM) can have a strong influence on model results.

Based on all these previous considerations, the objective of this paper is to address high-resolution (tens of m) numerical modelling of CO_2 atmospheric dispersal in complex terrains. To this purpose, we introduce a methodology for local wind field characterisation based on transfer functions that couple mesoscale Numerical Weather Prediction (NWP) models with a microscale Reynolds-Averaged Navier-Stokes (RANS) Computational Fluid Dynamics (CFD) model for the atmospheric boundary layer. The resulting high-resolution time-dependent wind field is given as input to the TWODEE shallow-layer gas dispersal model to simulate the evolution of gas concentration with time at different heights above the terrain. In addition to

coupling with meso/micro 4D meteorological models, the TWODEE-2.0 code has been improved (updated to version 2.1) in order to overcome a few limitations, including the option to easily describe time-dependent gas sources, heterogeneous terrain roughness, and assessment of the impact through a novel probabilistic approach that estimates the percentage of fatalities depending on gas concentration and exposure time (dose) at near-ground levels. The new version of the code is applied to reconstruct gas dispersion from the 1986 lake Nyos event compared with previous simulations (Costa and Chiodini, 2015), and results are used to illustrate the model gain on the time evolution of the gas source.

In this manuscript, Section 2 overviews the main characteristics of the TWODEE model and the modifications introduced to account for heterogeneous high-resolution 4D wind fields, time-dependent source term, and terrain variable roughness. The new probabilistic impact criterion for TWODEE model validation is also presented. Section 3 summarises the events occurred at lake Nyos and surroundings during 21 and 22 August 1986 and the results (and limitations) from previous simulation studies (Costa and Chiodini, 2015). A novel strategy for high-resolution local wind field characterisation on very complex terrains is presented on Section 4. The methodology uses the concept of transfer functions to couple the mesoscale Weather Research and Forecasting (WRF) (Skamarock et al., 2008) model with the CFD code Alya (Houzeaux et al., 2009) adapted to atmospheric boundary layer flows (Avila et al., 2013). Section 5 shows the TWODEE-2.1 model results for the 1986 lake Nyos case of study and discusses how and why the model new features increase the accuracy of simulations. In addition, we also perform a model parametric study varying the source term to constrain its intensity, evolution, and duration. Finally, Section 6 summarises and discusses the main results and future developments.

2 The TWODEE dense gas dispersal model

TWODEE-2 (Hankin and Britter, 1999; Costa et al., 2008; Folch et al., 2009) is a FORTRAN90 code for the atmospheric dispersal of dense gases based on the shallow layer approach. Under the assumption that $h/L \ll 1$ (being h the gas cloud depth and L a characteristic length), the 2D shallow layer approach allows a compromise between more realistic but computationally demanding 3D CFD models and simpler 1D integral models. The TWODEE family models build on the depth averaged equations for a gas cloud resulting from mixing a gas of density ρ_g with an ambient fluid (air) of density ρ_a ($\rho_g > \rho_a$). The integration of volume, mass, and momentum balance equations over the mixed cloud depth from the ground to the top of the cloud yields to (e.g. Hankin and Britter, 1999):

$$\frac{\partial h}{\partial t} + \nabla \cdot (h\bar{\mathbf{u}}) = u_e + u_s \quad (1)$$

$$\frac{\partial (h(\bar{\rho} - \rho_a))}{\partial t} + \nabla \cdot (h(\bar{\rho} - \rho_a)\bar{\mathbf{u}}) = \rho_a u_e + \rho_g u_s \quad (2)$$

$$\begin{aligned}
& \frac{\partial(h\bar{\rho}\bar{\mathbf{u}})}{\partial t} + \nabla \cdot (h\bar{\rho}\bar{\mathbf{u}} \otimes \bar{\mathbf{u}}) + \frac{1}{2}S_1\nabla(g(\bar{\rho}-\rho_a)h^2) + \\
& S_1g(\bar{\rho}-\rho_a)h\nabla e + \frac{1}{2}\bar{\rho}C_D|\bar{\mathbf{u}}|\bar{\mathbf{u}} + \\
& \mathbf{F} + \kappa\rho_a\left(\frac{\partial}{\partial t} + v_a\frac{\partial}{\partial x} + w_a\frac{\partial}{\partial y}\right) \cdot (h(\bar{\mathbf{u}}-\mathbf{u}_a)) = \rho_a u_e \mathbf{u}_a
\end{aligned} \tag{3}$$

where h is the cloud depth (defined as the height below which 95% of the buoyancy is located), $\bar{\rho}$ is the depth averaged cloud density, $\bar{\mathbf{u}} = (\bar{u}_x, \bar{u}_y)$ is the depth averaged cloud velocity, $\mathbf{u}_a = (v_a, w_a)$ is the ambient fluid (air) velocity vector, u_e is the ambient fluid entrainment velocity modulus, u_s is the gas inflow velocity modulus (source term), $e = e(x, y)$ is the terrain elevation, C_D is a drag coefficient, \mathbf{F} is the turbulent shear stress force (per unit area), and $S_1 \approx 0.5$ and κ are semi-empirical parameters. The terms in the momentum equation (3) include the local time derivative, the convective term, the pressure gradient (assumed hydrostatic although the density profile can be non-uniform), the effect of terrain slope, the surface shear stress (depending on the terrain roughness and characterised by the drag coefficient), the force per unit area exerted by turbulent shear stress and, finally, the leading edge terms that account for interaction among dense and ambient fluids. Given closure equations for the drag coefficient C_D , shear stress force \mathbf{F} and entrainment velocity u_e (Hankin and Britter, 1999; Folch et al., 2009), the set of equations above can be resolved numerically to obtain cloud height and vertically averaged density and velocity depending on terrain, source term (definition of u_s) and ambient fluid velocity (wind field). Although TWODEE is a shallow water model, it can also estimate the vertical density profile from the depth averaged density $\bar{\rho}$ assuming an empirical exponential decay (Hankin and Britter, 1999):

$$\rho(z) = \rho_a + \frac{2}{S_1}(\bar{\rho} - \rho_a) \exp\left(-\frac{2}{S_1}\frac{z}{h}\right) \quad 0 \leq z \leq h \tag{4}$$

from which the vertical concentration profile $c(z)$ (expressed in ppm) and the dosage $Do(t, z)$ during a time interval $(0, t)$ can be computed as:

$$c(z) = c_b + (10^6 - c_b) \frac{\rho(z) - \rho_a}{\rho_g - \rho_a} \tag{5}$$

$$Do(t, z) = \int_0^t [c(z)]^n dt \tag{6}$$

where c_b is the background concentration (in ppm) and n is the so-called toxicity exponent.

2.1 TWODEE-2.1

The TWODEE code version 2.0 (Folch et al., 2009) has been improved so that the upgraded version 2.1 can deal with:

1. Time-dependent heterogeneous wind fields furnished by mesoscale or microscale wind models. The previous code version admitted only a steady homogenous wind profile or heterogeneous wind fields furnished by a meteorological processor (included in the code distribution package) based on the Diagnostic Wind Model (Douglas and Kessler, 1990, DWM).

The DWM model generates a gridded wind field from input data (observations) at a point of the domain by adjusting the domain-scale mean wind for terrain effects and performing a divergence minimisation to ensure mass conservation. This implies an obvious limitation if winds vary (*e.g.* during long-lasting emissions) or in very complex terrains or large domains, where the winds adjusted by DWM can be notably different depending on the location of the points where observations are available. In contrast, the updated TWODEE code version can read outputs from either the Weather Research and Forecasting (WRF) (Skamarock et al., 2008) mesoscale model (see Section 4.1) or from CFD microscale model simulations. In the case of WRF, a meteorological pre-processor reads the WRF model outputs for a user-defined time interval (n_t WRF output time steps) and performs an interpolation from the WRF native grid (Arakawa staggered C-grid in the horizontal, pressure levels for the vertical) to a series of user-defined z-cuts on a terrain-following regular grid. In the case of microscale simulations, the meteorological pre-processor reads outputs from the ALYA-CFDWind model (see Section 4.2) and, for each WRF time slice, performs the meso-to-micro downscaling using transfer functions as explained in Section 4.3. This results on n_t downscaled wind fields on the same set of terrain-following z-cuts. Whichever the approach considered for the wind field (*i.e.* mesoscale WRF or WRF downscaled with ALYA-CFDWind), TWODEE-2.1 reads winds at the gridded z-cuts and then interpolates to its computational mesh at a user-defined reference height.

2. Time-dependent source term(s). TWODEE-2.1 can easily handle multiple point sources or time-dependent source terms by using piece-wise constant pulses of arbitrary duration (the previous version had to use the "restart" option).
3. Multiple input file formats for digital elevation models and terrain roughness. In addition, the model output has also been generalized including netCDF and kml output file formats.
4. Impact assessment for dense CO_2 gas dispersal. According to the Occupational Safety and Health Administration (OSHA), CO_2 the Long Term Exposure LIMIT (LTEL) is set at air concentrations of 0.5% (5,000 ppm) for exposures up to 8-hours per day, whereas the Short Term Exposure LIMIT (STEL) is set at air concentrations of 3% (30,000 ppm) for exposures up to 15 minutes. However, at higher concentrations/dosage, CO_2 causes several adverse health effects when inhaled. Experience shows that CO_2 air concentrations of around 5% (50,000 ppm) produce heavy breathing, sweating, quicker pulse, weak narcotic effects and headache. Under these concentrations, the exposure time to avoid the development of adverse health symptoms is of few minutes only. For example, a 30-minute exposure to 5% concentration (50,000 ppm) produces intoxication manifested as headaches, dizziness, restlessness, breathlessness, increased heart rate and blood pressure, and visual distortion. At around 10% concentration (100,000 ppm) humans are affected by respiratory distress, impaired hearing, nausea, vomiting, and loss of consciousness in 10 min only. Finally CO_2 air concentrations >15% (150,000 ppm) are considered lethal causing coma, convulsions, and rapid death. The U.K. Health and Safety Executive (HSE; www.hse.gov.uk) developed an assessment of dangerous toxic substances, including CO_2 , defining the Specified Level Of Toxicity (SLOT) and the Significant Likelihood Of Death (SLOD) depending on concentration and duration of exposure (Harper, 2011). Considering these values (Harper, 2011), we assume a cumulative

normal distribution for the percentage of human fatalities:

$$P(c, d) = \frac{1}{2} \left[1 + \operatorname{erf} \left(\frac{c - \mu}{\sqrt{2}\sigma} \right) \right] \quad (7)$$

$$\mu = a_0 + \frac{b_0}{(1 + d^{c_0})} \quad (8)$$

$$\sigma = a_1 + \frac{b_1}{(1 + d^{c_1})} \quad (9)$$

where P is the probability of death, c is the CO_2 concentration (expressed in %), d is the exposure duration (expressed in minutes), and a_i and b_i are empirical constants. After calibration of eq. (7) with the HSE tabulated values (assuming SLOT at 3%), we obtained the following values for the constants: $a_0 = 5.056$, $b_0 = 17.885$, $c_0 = 0.357$, $a_1 = 0.662$, $b_1 = 2.421$, and $c_1 = 0.354$. Results are shown in Figure 1, plotting the percentage of fatalities (probability of death in %) as function of CO_2 concentration for different exposure durations. An impact criterion based on these empirical curves was added in TWODEE-2.1 to compute, at each point of the computational domain, the predicted percentage of fatalities at user-defined heights.

3 The 1986 Lake Nyos event and previous modeling results

- 15 Lake Nyos (Fig. 2) is one of the ~ 40 volcanic lakes scattered along the 1600 km-long Cameroon Volcanic Line (e.g. Lockwood and Rubin, 1989). This lake became famous worldwide on Thursday 21 August 1986 after the occurrence of the most tragic limnic eruption ever registered. During few (< 5) hours, a huge ($0.1\text{--}1 \text{ km}^3$) CO_2 gas cloud (Tuttle et al., 1987; Kanari, 1989; Evans et al., 1994) released during the lake Nyos overturning spread downslopes from the lake (1100 m a.s.l.) filling up the underlying Nyos valley and suffocating around 1700 people and 3000 cattle (e.g. Kling et al., 1986). Evidence from eyewitness reports indicated that the cloud directed primarily W-NW at around 21:00 LT (20:00 UTC) affecting the bottom valleys of Cha and Fang (see Fig. 3), but without causing reported deaths at the later location (Baxter and Kapila, 1989). Following this initial dispersal phase, the gas cloud direction shifted towards NE, probably as a consequence of a sudden wind veer, filling up the Nyos valley down to the Subum village (~ 10 km line of sight from the lake), where the largest number of casualties occurred. Deaths in humans and animals (including birds) occurred up to 20 km distance across the main and adjacent secondary valleys (Le Guern et al., 1992).

- Le Guern et al. (1992) collected multiple testimonies of survivors that allowed the authors for reconstructing the history of the event, locating where casualties occurred, and constructing a map of the areas impacted by the disaster (see Table 1 and Fig.1 in Le Guern et al. (1992)). It should be stressed that the percentages of fatalities reported by Le Guern et al. (1992) resulted from posterior interviews by anthropologists and are subject to large uncertainties related to translation and interpretation, approximate location of sites, and actual number of casualties. Notwithstanding these limitations, data inferred from eye-witnessing constitutes the only source of information available for indirect model validation given the lack of any wind or gas

concentration measurement at Nyos on that time. At present, the level of risk at lakes Nyos and Monoun has decreased notably after the successful deployment of degassing pipes started in March 2001 and February 2003, respectively. The progressive gas removal resulted in considerable deepening of the level of gas-rich water in a short period of time (Kling et al., 2005; Kusakabe et al., 2008). However, there is still the recognised need to perform a quantitative CO_2 hazard assessment for several reasons, including the possibility of future gas build-up or a breakthrough of the dam build at the northern shore of the lake. Thus, for example, Aka and Yokoyama (2013) estimated that dam break could cause a sudden drop in lake level by 40 m, followed by decompression and inevitably a new gas burst.

Costa and Chiodini (2015) have recently used the TWODEE-2.0 model to simulate four different scenarios (released gas mass ranging from 0.29 to 1.95 Tg, wrongly reported in their table as Gg) using a 90-m resolution DEM. Surface wind data resulted from applying the DWM mass-consistent pre-processor to a constant wind profile extracted from the closest point of the NCEP/NCAR Reanalysis-1 (Kalnay et al., 1996). As a result of this limitation, none of their simulations was able to capture properly the cloud dispersion pattern, strongly influenced by a sudden wind veering. Figure 4 shows, for illustrative purposes, results for their scenario-II, the one that better reproduced the observations (see Fig.5 in Costa and Chiodini (2015) for other scenario results). In the following sections, these previous simulations are revisited considering a higher DEM accuracy (30-m instead of 90-m; from ASTER G-DEM, a product of METI and NASA) and high-resolution transient microscale surface winds derived from downscaling the WRF-ARW mesoscale winds with the ALYA-CFDWind model.

4 Wind field characterisation

4.1 Mesoscale wind modeling using WRF-ARW

The Weather Research Forecast (WRF) is a fully compressible, non hydrostatic mesoscale NWP model and atmospheric simulation system designed to serve both operational forecasting and atmospheric research needs (Skamarock et al., 2008). The model uses finite differences schemes on a staggered horizontal Arakawa C-grid and a terrain-following vertical coordinate system to solve the atmospheric flow. Here, the version 3.4.1 of the dynamical solver Advanced Research WRF (WRF-ARW) was configured with the physical parameterisations and schemes summarised in Table 3.

For the Nyos application, the WRF-ARW simulation starts on Thursday 21 August 1986 at 00:00 UTC lasting 48 h (around 18 h are allowed for model spin-up). Initial and 4-times daily boundary conditions driving WRF come from the NCEP/DOE Reanalysis 2. Figure 5 shows the five domains used, consisting of 1 parent grid at 81 km horizontal resolution, covering the African continent, and 4 nested domains at 27, 9, 3, and 1 km horizontal resolutions, all centered around Lake Nyos. The regional synoptic situation on Thursday 21 August 1986 is illustrated in Figure 6, showing WRF-ARW results for the first nest domain (27 km resolution) at different times. It can be observed how a low pressure (<800 hPa at 2000 m) region and its cyclonic circulation located NE of Cameroon coexists with strong winds both South and North and a region of weak winds over NW Cameroon at around 16:00 UTC (Fig. 6a). The simulations indicate that this situation lasted for about 6 hours until 22:00 UTC, when winds over Nyos became stronger and pointed SE. In contrast, near-surface winds followed a very different pattern (Figure 7) reflecting the topography-induced forcing at lower atmospheric levels. However, given the orographic complexity,

the WRF-ARW results at 1 km resolution (inner nest) are still insufficient for driving high-resolution gas transport simulations, indicating the need for an ulterior downscaling.

4.2 Microscale wind modelling using ALYA-CFDWind

5 ALYA (e.g. Houzeaux et al., 2009; Vázquez et al., 2016) is a High Performance Computing (HPC) multi-physics parallel solver based on a Finite Element Method (FEM) able to run with thousands of processors with an optimal scalability. Within this multi-physics general framework, Avila et al. (2013) implemented a solver for the Atmospheric Boundary Layer (ABL) based on the Reynolds-Averaged Navier-Stokes (RANS) equations and a $\kappa - \epsilon$ turbulence model adapted to atmospheric flows in complex terrains. This model, called ALYA-CFDWind, can handle thermal coupling assuming the Boussinesq approximation although here we constrain to neutral atmospheric stability for simplicity. The ALYA-CFDWind module, originally developed in the context of wind energy, includes Coriolis effects, a consistent limitation of the mixing length, a wall law for atmospheric boundary layers (logarithmic profile depending on terrain roughness and wind friction velocity), automatic meshing and generation of boundary conditions for atmospheric boundary layer wind profiles over a flat terrain. In order to have consistent inflow boundary conditions (*i.e.* flat terrain inflow profile) and also to prevent flow recirculation at the outflow boundary, the ALYA-CFDWind computational domain is made of an external flat buffer designed to accommodate the flow, an adjacent transition zone, and an inner higher-resolution zone with the real topography and where the flow is actually computed. For the Nyos case, the ALYA-CFDWind computational domain consists of an inner zone of $20 \times 20 \text{ km}^2$ at 50 m horizontal resolution, a transition zone of 15 km and a flat buffer zone of 10 km to accommodate the flow. Along the vertical direction, the structured hexahedral grid extends up to 5 km above the terrain with 64 vertical layers growing geometrically in size from 0.5 m at surface to 250 m at the top of the computational domain. The resulting computational mesh (see Fig. 8) has a total number of grid points of about 30 million. The Coriolis force was set to that of a latitude of 6° N , and the maximum mixing length calculated depending on the wind at top as in Apsley and Castro (1997). As boundary conditions, we prescribed the wind at top (geostrophic wind) to a reference value of 10 ms^{-1} considering different geostrophic wind directions (sectors) at 15° intervals. One ALYA-CFDWind simulation was performed for each reference direction of the geostrophic wind (*i.e.* 24 different runs are necessary to scan all possible geostrophic wind directions). Assuming self-similarity, these reference runs can be scaled to actual velocity and interpolated in direction during the meso-to-micro downscaling strategy (see section 4.3) depending on the mesoscale (WRF) time-dependent geostrophic wind direction and intensity.

4.3 Meso-to-micro downscaling strategy

Mesoscale NWP models like WRF-ARW can be used to forecast winds at horizontal resolutions down to around 1 km. This grid resolution may be insufficient to drive subsequent gas dispersion simulations over complex terrains, where sub-grid scale topographic features can alter near-surface winds and therefore the resulting gas dispersal pattern. For this reason, a meso-to-micro downscaling strategy may be necessary in order to capture wind-forcing effects caused by the local sub-grid topography. At present, model downscaling is being a subject of active research within the atmospheric and wind engineering communities, with two well-differentiated strategies dominating the scene. On the one hand, statistical downscaling methodologies (e.g.

Ranaboldo et al., 2013; Devis et al., 2013; Kirchmeier et al., 2014) build on finding correlations between global/regional model simulations and observations during long periods of time in order to identify patterns used to forecast in time and space by extrapolation. This has been proved to be effective for some applications (*e.g.* wind farm power production forecast), but requires of long series of wind observations that, for the application considered here, do not exist. On the other hand, dynamical or physical downscaling (*e.g.* Castro et al., 2014) couples different nested models so that the outer mesoscale model furnishes boundary conditions to the inner microscale solver at each model time integration step. The inner microscale model can range in complexity from simpler mass-consistent diagnostic models to a CFD solver. This option is clearly more attractive but, apart from the higher computational cost, still presents some challenges related to not well-resolved inconsistencies in the physics of models across scales. On top of this, a pure dynamical downscaling approach becomes computationally prohibitive for hazard assessment purposes, where climatically representative wind series have to be considered (note that this implies thousands of coupled simulations in order to statistically cover all meteorological situations with its associated probability). Given these constrains, we adopt an intermediate Physical-Statistical strategy based on transfer functions, a concept inspired on methodologies used for micro-scale wind resource assessment over regional scales (*e.g.* Sanz Rodrigo et al., 2010). The idea behind transfer functions is simple. Given a mesoscale wind field (in our case WRF-ARW at 1 or 3 km grid resolution, see Section 4.1) and a set of microscale wind fields, each characterised by a reference wind direction ϕ and intensity (in our case 24 ALYA-CFDWind runs at 50 m grid resolution and 15° geostrophic wind binning, see Section 4.2), the transfer functions determine a new (downscaled) wind field as:

$$u_{down} = f \times u_{WRF \rightarrow CFD} = \frac{u_{CFD}^\theta}{\langle u_{CFD}^\theta \rangle_R} \times u_{WRF \rightarrow CFD} \quad (10)$$

where $u_{down}(x, y, z, t)$ is the resulting downscaled wind velocity, $f = f(\theta, t)$ is the point-dependent transfer function at time t , $u_{WRF \rightarrow CFD}$ is the WRF wind velocity interpolated to the (finer) microscale mesh, u_{CFD}^θ is the ALYA-CDFWind velocity for a reference wind direction θ , and $\langle u_{CFD}^\theta \rangle_R$ is the CDFWind velocity for the same direction θ averaged over a radius of influence R (of size similar to that of the WRF cells). Note that, by construction, at each point, the CFD field u_{CFD}^θ averaged over its circumference of influence R equals the WRF velocity interpolated at that point. In other words, the resulting downscaled wind field coincides on average (over a WRF cell) with that of the mesoscale model but, at the same time, it has all the local wind fluctuations around this mean (caused by the microscale topographic forcing) which can not be captured by the (coarser) mesoscale grid. Moreover, the methodology is thought to preserve flow characteristics due to the thermal stratification present in the WRF model.

A central point in this hybrid downscaling methodology is how to determine the reference wind direction θ and then how to link it consistently with the mesoscale flow. For this, we adopt the following strategy to obtain downscaled 2D fields at given heights z_t above the terrain:

1. The first step consists in extracting from the microscale computational domain (ALYA-CFDWind) a series of 2D plains Ω_{2D} at user-defined heights above the terrain (*e.g.* $z_t = 2, 10$, and 50 m). Each of these Ω_{2D} planes is then decomposed in a series of structured patches or segments S_{ij} , allowing for some overlap at the borders of the sub-domains (*i.e.*

$\cup S_{ij} = \Omega_{2D}; \cap S_{ij} \neq \emptyset$). In particular, we consider here one squared patch around each WRF mass-point with sizes $2dx_{WRF} \times 2dy_{WRF}$, being $dx_{WRF} \times dy_{WRF}$ the WRF cell area (see Figure 9).

2. For each sub-domain S_{ij} , the reference wind direction θ at time t is computed as the averaged WRF velocity over the segment. Note that, for small computational domains or flat terrains, little variations in θ are expected across different segments S_{ij} . However, over large areas or in very complex terrains, synoptic-scale effects may result on variations of θ at different segments.
 3. For each sub-domain S_{ij} and time t , determine the microscale (ALYA-CFDWind) reference solution u_{CFD}^θ performing a linear interpolation between the two reference runs ϕ_1 and ϕ_2 that limit the bin direction containing θ (*i.e.* $\theta \in (\phi_1, \phi_2)$). For example, if for a given segment and time one has $\theta = 5^\circ$, then the bin-bounding solutions u_{CFD}^0 and u_{CFD}^{15} (*i.e.* precomputed solutions for $\theta = 0^\circ$ and $\theta = 15^\circ$, respectively) are combined to obtain u_{CFD}^5 .
 4. Perform a smoothing operation in the overlap regions between neighbouring sub-domains S_{ij} . This is necessary because different values of θ in adjacent segments can result on discontinuous values of u_{CFD}^θ across segments. In particular, we consider a simple weighted interpolation in the regions with overlap.
 5. Finally, apply the transfer functions using eq. (10) to scale the microscale wind modulus and obtain u_{down} .
- Figure 10 compares the 3 km resolution WRF results at 10 m above the terrain with the downscaled field at the area of interest around the Lake Nyos. This Figure highlights the local information added by the microscale model over mountainous areas and valleys, where WRF shows a smoother behaviour. Unfortunately, no surface wind data existed at that time to validate these results. However, some consistence with reports exists. For example, a strong microscale wind rotation from NE to SW (wind origin direction) is clearly visible along the Nyos valley from 18:00 to 21:00 UTC, in agreement with cloud dispersal reports indicating two differentiated dispersal phases. In order to illustrate this phenomenon, Figure 11 plots time series of 10-m wind velocity and direction from 16:00 to 24:00 UTC at two locations of special interest, the lake itself and a point at the bottom of the Nyos valley (see Fig. 3). Note how near surface wind direction changes sharply at both locations between 17:30 (wind from NE) and 19:30 (wind from SW) UTC. A systematic WRF model error phase of about 3 hours seems to exist because dispersal reports suggest such a strong wind veering occurring after 22:00 LT (21:00 UTC). In any case, these wind field variations strongly indicate the need for including time-dependent heterogeneous winds for the gas dispersal simulations. Finally, it is worth looking at the atmospheric stability during the time of the event since this parameter also favors the accumulation of dense gas at depressions. Figure 12 plots the static stability versus time, clearly reflecting a unstable to stable transition related to the diurnal cycle occurring at around 16:00 UTC.

5 High-resolution dispersal modeling results

- Once the high-resolution winds (*i.e.* WRF-ARW winds downscaled with ALYA-CFDWind using transfer functions) have been obtained for the period and area of interest, 10-m wind values every 20 minutes (*i.e.* 3 times hourly) were given to

the TWODEE-2.1 model together with the 30-m resolution DEM and the definition of the source term to simulate the CO_2 cloud dispersal. Our simulations assume the eruption started at 17:30 UTC (18:30 LT), *i.e.* 2-3h advanced with respect to eyewitness reports. This source term shift in the dispersal simulations was necessary because of the WRF model phase error discussed in Section 4.3. On the other hand, given the large uncertainties in the source term concerning eruption duration, intensity and evolution of CO_2 mass flow rate with time, we performed a source term characterisation considering different sets of simulations, each set with different source term characteristics (see Table 4):

- Eruptions lasting 3h with a constant CO_2 emission but varying the source intensity. This is similar to the scenarios considered by Costa and Chiodini (2015), who ranged the source intensity between $1.4 \times 10^5 \text{ kg m}^{-2}\text{d}^{-1}$ (based on Kanari (1989)) and $4.3 \times 10^5 \text{ kg m}^{-2}\text{d}^{-1}$ (based on Evans et al. (1994)) (Group 1 in Table 4);
- Eruptions lasting 3h with a CO_2 emission decreasing linearly and considering different time rates and source intensities (Group 2);
- Eruptions lasting 3h with a CO_2 emission increasing linearly and considering different time rates and source intensities (Group 3);
- Eruptions lasting 3h with a CO_2 emission decreasing exponentially considering different decay rates and source intensities (Group 4);
- Eruptions lasting 3h with a CO_2 emission increasing exponentially considering different growth rates and source intensities (Group 5);
- Eruptions with an initial phase with low constant CO_2 emission followed by a burst and exponential decay considering different durations for each phase, decay rates and source intensities (Groups 6 and 7). In addition, eruption durations for these groups were varied between 2 and 4h as in Costa and Chiodini (2015).

Results for all these simulations (a total of 62 source term scenarios) were validated on a point-by-point basis comparing the TWODEE-2.1 predicted probability of fatalities with the actual percentage of fatalities reported at 53 locations (Table 1). When defining a metric for the skill score of a simulation, it is important to consider if observations are well-distributed across the possible range of values or not. In our case, for example, 29 observations of 53 (*i.e.* 55%) and 8 observations of 53 (*i.e.* 15%) have 0 and 100% of observed fatalities, respectively. It means that around 70% of the values are at the tails of the distribution and, consequently, the evaluation of scores without binning would lead to biased skills, favouring those scenarios in which the source intensity (emitted mass) is largely under/over-predicted. In order to prevent this, we adopt binning strategy and evaluate scores first for each discrete bins and then globally by averaging over all bins. Ideally, the number of bins should scale as \sqrt{n} so that, in our case ($n = 53$), around 7 bins would be recommendable. However, in order to avoid having bins with little or even no observations, we considered the following 5-class binning for the percentage of fatalities: the first bin 0-5% (no significant mortality), the second bin 5-35%, the third 35-65%, the fourth 65-95%, and the fifth 95-100% (total mortality). This allows us

to compute the Pearson cumulative test statistic χ^2 as:

$$\chi^2 = \sum_{i=1}^{n_b} \frac{(O_i - M_i)^2}{M_i} \quad (11)$$

where $n_b = 5$ is the number of bins, O_i is the number of observations (localities) within the i -th bin, and M_i is the number of model localities laying in the same bin. On the other hand, we also compute the total Mean Absolute Error (MAE) as:

$$MAE = \frac{1}{n_b} \sum_{i=1}^{n_b} (MAE)_i \quad (12)$$

with

$$(MAE)_i = \frac{1}{m} \sum_{j=1}^m |PO_j - PM_j| \quad (13)$$

where $(MAE)_i$ is the bin absolute error, m the number of observations (localities) in the j -th bin, PO is the observed percentage of fatalities, and PM is the modeled probability at the same locality.

- 10 As a best-fit criterion we considered the lowest value of χ^2 but trying also to minimise MAE. We found that the higher-score simulations belong to the same group of source term runs: a source with two phases; an initial phase with a constant CO_2 emission followed by a second phase with exponential source strength decay (group 6). This is a consistent result. Table 5 and Figure 13 summarise the characteristics of the source term for the highest ranked run. The total CO_2 emitted mass is 0.86 Tg, released during 3 h. This value is in good agreement with previous independent estimations, ranging from 0.29 Tg (Evans et al.,
- 15 1994) to 1.95 Tg (Tuttle et al., 1987). On the other hand, the values of χ^2 and MAE are 4.98 and 34.7% respectively, giving a very good fit across all bins (see Figure 14). For comparison, the scenario-II in Costa and Chiodini (2015) (see Figure 4) gives a χ^2 of 7.61 and a MAE of 36.6%, substantially higher even if the characteristics of the source term are similar to our best-fit runs both in terms of duration (4 h) and total mass (1.33 Tg). These differences can be explained because of the high-resolution time-dependent winds, which are able to capture the wind veering leading to the differentiated cloud dispersal branches (see
- 20 Figure 13). This can also be observed by looking at the evolution of concentration with time at different locations. As observed in Figure 15, the TWODEE-2.1 simulations can reproduce a first W-NW branch affecting the bottom valleys of Cha and Fang (location L34) followed by a gas cloud direction shift towards NE affecting the Subum village (location L36). According to simulations, this occurred around 2 hours after the eruption onset (*i.e.* 20:30 LT). Considering the 2-3 h shift necessary to correct the meteorological (WRF) phase error, this is in excellent agreement with eyewitness reports.

25 6 Summary and Discussion

We have developed a high-resolution numerical model for CO_2 atmospheric dispersal in complex terrains by introducing a methodology for time-dependent microscale wind characterisation based on transfer functions that couple a mesoscale Numerical Weather Prediction Model with a microscale Computational Fluid Dynamics model for the atmospheric boundary layer. The model was applied to reconstruct the source conditions and the catastrophic CO_2 dispersal at Lake Nyos in 1986. Simu-

30 lation results were compared with the observed fatalities through a novel probabilistic approach. We found that the new model

with high-resolution time-dependent winds shows better agreement with the observations compared with previous simulations, indicating that the model is capable of performing gas dispersal hazard assessment on very complex terrains in the future.

The optimal runs (higher scores for percentage of fatalities) shared same source evolution pattern: an initial phase with a low constant CO_2 emission and a second phase with a burst followed by exponential decay in CO_2 mass flux. This suggests addi-

5 tional information on physical processes at Lake Nyos during the 1986 limnic eruption. The scenario is compatible with a gas eruption that started locally in some region of the lake continuously emitting a relatively low amount of CO_2 near the equilibrium state and then, a perturbation, likely due to the gas ascent itself or to other mechanism(s), grew destabilising the whole lake and triggering the exponential phase by overturn of the different layers in the lake in a supersaturation state. One simple model explaining the exponential decay during the second phase is that the driving force for CO_2 emission is an overpressure
10 in the lake, such as caused by CO_2 -supersaturation, and the temporal change in the overpressure is controlled by the emitted CO_2 flux, like it occurs in a volatile supersaturated magma chamber. This model can be simply formulated as (e.g. Huppert and Woods, 2002):

$$Q = C_1 p \quad (14)$$

and

$$15 \quad \frac{dp}{dt} = -C_2 Q \quad (15)$$

where Q is the emitted CO_2 flux, p is the overpressure, and C_1 and C_2 are two constants. These equations lead to the solution of exponential decay form for Q :

$$Q(t) = Q_0 \exp(-C_1 C_2 t) \quad (16)$$

where Q_0 is the initial value of Q . Although the precise mechanism in the lake during the limnic eruption is still under discus-
20 sion, we can infer from the above model that the second phase is simply explained by a relaxation process of supersaturation state in the lake. Although further investigations for the dynamics of lake water are necessary for reproducing the physical process of the limnic eruption in detail, the features of the CO_2 emission obtained in this study may provide strong constraints on physical modeling in the lake.

Author contributions. AF has implemented the improvements to the TWODEE code and written the bulk of the manuscript with inputs from
25 all authors. JB and AF have performed the wind field characterisation. TK has configured and performed TWODEE simulations. AC has characterised the scenarios, defined the strategy for the impact criterion, and contributed to the text. All authors reviewed the manuscript.

Acknowledgements. JB has been partially funded by the Industrial Doctorate Program of the Catalan Government (eco/2497/2013). We also thank the two anonymous reviewers for their comments and suggestions. Finally, our colleagues Greg Tanyileke, Fantog Wilson and Romaric Ntchantcho from the Institut de Recherches Géologiques et Minières (IRGM) (Cameroon) are warmly thanked for their field guidance and
30 scientific discussions during the workshop "30 years of Lake Nyos disaster" (Yaounde, 14-20 March 2016).

References

- Aka, F. T. and Yokoyama, T.: Current status of the debate about the age of Lake Nyos dam (Cameroon) and its bearing on potential flood hazards, *Natural Hazards*, 65, 875–885, doi:10.1007/s11069-012-0401-4, 2013.
- Apsley, D. and Castro, I.: A limited-length-scale $k-\epsilon$ model for the neutral and stably-stratified atmospheric boundary layer, *Boundary-Layer Meteorology*, 83, 75–98, doi:10.1023/A:1000252210512, 1997.
- Avila, M., Folch, A., Houzeaux, G., Eguzkitza, B., Prieto, L., and Cabezon, D.: A Parallel CFD Model for Wind Farms, *Procedia Computer Science*, 18, 2157 – 2166, doi:http://dx.doi.org/10.1016/j.procs.2013.05.386, http://www.sciencedirect.com/science/article/pii/S1877050913005292, 2013.
- Baxter, P. and Kapila, M.: Acute health impact of the gas release at Lake Nyos, Cameroon, 1986, *Journal of Volcanology and Geothermal Research*, 39, 265–275, doi:10.1016/0377-0273(89)90064-4, 1989.
- Britter, R.: Atmospheric dispersion of dense gases, *Annu Rev Fluid Mech*, 2, 317–344, doi:10.1146/annurev.fl.21.010189.001533, 1989.
- Burton, R. R., Dudhia, J., Gadian, A. M., and Mobbs, S. D.: The use of a numerical weather prediction model to simulate the release of a dense gas with an application to the Lake Nyos disaster of 1986, *Meteorological Applications*, 24, 43–51, doi:10.1002/met.1603, http://dx.doi.org/10.1002/met.1603, 2017.
- Castro, F., Santos, C., and da Costa, J.: One-way mesoscale-microscale coupling for the simulation of atmospheric flows over complex terrain, *Wind Energ.*, pp. 1251–1272, doi:10.1002/we.1758, 2014.
- Chen, F. and Dudhia, J.: Coupling an Advanced Land Surface–Hydrology Model with the Penn State–NCAR MM5 Modeling System. Part I: Model Implementation and Sensitivity, *Mon. Wea. Rev.*, 129, 569–585, 2001.
- Chiodini, G., Cardellini, C., Amato, A., Boschi, E., Caliro, S., Frondini, F., and Ventura, G.: Carbon dioxide Earth degassing and seismogenesis in central and southern Italy, *Geophys Res Lett*, 31, doi:L0761510.1029/2004GL019480, 2004.
- Chiodini, G., Granieri, D., Avino, R., Caliro, S., Costa, A., Minopoli, C., and Vilardo, G.: Non-volcanic CO₂ Earth degassing: case of Mefite d'Ansanto (Southern Apennines), Italy, *Geophys Res Lett*, 37, doi:10.1029/2010GL042858, 2010.
- Costa, A. and Chiodini, G.: Modelling Air Dispersion of CO₂ from Limnic Eruptions, pp. 451–465, Springer Berlin Heidelberg, Berlin, Heidelberg, doi:10.1007/978-3-642-36833-2_20, 2015.
- Costa, A., Macedonio, G., and Chiodini, G.: Numerical model of gas dispersion emitted from volcanic sources, *Annu Geophys*, 48, 805–815, doi:10.4401/ag-3236, 2005.
- Costa, A., Chiodini, G., Granieri, D., Folch, A., Hankin, R., Caliro, S., Avino, R., and Cardellini, C.: A shallow- layer model for heavy gas dispersion from natural sources: application and hazard assessment at Caldara di Manziana, Italy, *Geochem Geophys Geosyst*, 9:Q03002, doi:10.1029/2007GC001762, 2008.
- Devis, A., van Lipzig, N. P. M., and Demuzere, M.: A new statistical approach to downscale wind speed distributions at a site in northern Europe, *Journal of Geophysical Research: Atmospheres*, 118, 2272–2283, doi:10.1002/jgrd.50245, 2013.
- Douglas, S. and Kessler, R.: Users Manual for the Diagnostic Wind Model, EPA-450/4-90-007C, San Rafael, CA, volume iii edn., 1990.
- Dudhia, J.: Numerical Study of Convection Observed during the Winter Monsoon Experiment Using a Mesoscale Two-Dimensional Model, *J. Atmos. Sci.*, 46, 3077–3107, 1989.
- Evans, W. C., White, L. D., Tuttle, M. L., Kling, G. W., Tanyileke, G., and Michel, R. L.: Six years of change in Lake Nyos, Cameroon, yield clues to the past and cautions for the future, 1994.

- Folch, A., Costa, A., and Hankin, R.: twodee-2: A shallow layer model for dense gas dispersion on complex topography, *Computers & Geosciences*, 35, 667–674, doi:10.1016/j.cageo.2007.12.017, 2009.
- Hankin, R. K. S. and Britter, R. E.: TWODEE: The Health and Safety Laboratory shallow layer model for heavy gas dispersion. Part 1. Mathematical basis and physical assumptions, *J. Hazard. Mater.*, A66, 211–226, 1999.
- 5 Harper, P.: Assessment of the major hazard potential of carbon dioxide (CO₂), Report, U.K. Health and Safety Executive, 2011.
- Hong, S.-Y. and Lim, J. O. J.: The WRF Single-Moment 6-Class Microphysics Scheme (WSM6), *J. Korean Meteor. Soc.*, 42, 129–151, 2006.
- Houzeaux, G., Vázquez, M., Aubry, R., and Cela, J.: A massively parallel fractional step solver for incompressible flows, *Journal of Computational Physics*, 228, 6316–6332, doi:http://dx.doi.org/10.1016/j.jcp.2009.05.019, 2009.
- Huppert, H. E. and Woods, A. W.: The role of volatiles in magma chamber dynamics, *Nature*, 6915, 493–495, doi:10.1038/nature01211, 10 2002.
- Janjic, Z.: The step-mountain eta coordinate model: further developments of the convection, viscous sublayer and turbulence closure schemes, *Mon. Wea. Rev.*, 122, 927–945., 1994.
- Kain, J. S.: The Kain-Fritsch Convective Parameterization: An Update, *J. Appl. Meteor.*, 43, 170–181, 2004.
- Kalnay, E., Kanamitsu, M., Kistler, R., Collins, W., Deaven, D., Gandin, L., Iredell, M., Saha, S., White, G., Woollen, J., Zhu, Y., Leetmaa, 15 A., Reynolds, R., Chelliah, M., Ebisuzaki, W., Higgins, W., Janowiak, J., Mo, K. C., Ropelewski, C., Wang, J., Jenne, R., and Joseph, D.: The NCEP/NCAR 40-Year Reanalysis Project, *Bulletin of the American Meteorological Society*, 77, 437–471, 1996.
- Kanari, S. I.: An inference on the process of gas outburst from Lake Nyos, Cameroon, *Journal of Volcanology and Geothermal Research*, 39, 135–149, doi:10.1016/0377-0273(89)90054-1, 1989.
- Kirchmeier, M. C., Lorenz, D. J., and Vimont, D. J.: Statistical Downscaling of Daily Wind Speed Variations, *Journal of Applied Meteorology and Climatology*, 53, 660–675, doi:10.1175/JAMC-D-13-0230.1, 2014. 20
- Kling, G. W., Clary, M. A., Compton, H. R., Devine, J. D., Evans, W. C., Humphrey, A. M., Koenigsberg, E. J., Lockwood, J. P., Tuyrle, M. L., and Wagner, G. N.: The 1986 Lake Nyos Gas Disaster in Cameroon, West Africa, *Science*, 236, 169–175, doi:10.1126/science.236.4798.169, 1986.
- Kling, G. W., Evans, W. C., Tanyileke, G., Kusakabe, M., Ohba, T., Yoshida, Y., and Hell, J. V.: Degassing Lakes Nyos and Monoun: 25 defusing certain disaster., *Proceedings of the National Academy of Sciences of the United States of America*, 102, 14 185–14 190, doi:10.1073/pnas.0502274102, 2005.
- Kusakabe, M., Ohba, T., Issa, Yoshida, Y., Satake, H., Ohizumi, T., Evans, W. C., Tanyileke, G., and Kling, G. W.: Evolution of CO₂ in lakes Monoun and Nyos, Cameroon, before and during controlled degassing, *Geochemical Journal*, 42, 93–118, doi:10.2343/geochemj.42.93, 2008.
- 30 Le Guern, F., Shanklin, E., and Tebor, S.: Witness accounts of the catastrophic event of August 1986 at Lake Nyos (Cameroon), *Journal of Volcanology and Geothermal Research*, 51, 171–184, doi:10.1016/0377-0273(92)90067-N, 1992.
- Lockwood, J. P. and Rubin, M.: Origin and age of the Lake Nyos maar, Cameroon, *Journal of Volcanology and Geothermal Research*, 39, 117–124, doi:10.1016/0377-0273(89)90052-8, 1989.
- Mlawer, E. J., Taubman, S. J., Brown, P. D., Iacono, M. J., and Clough, S. A.: Radiative transfer for inhomogeneous atmospheres: RRTM, a 35 validated correlated-k model for the longwave, *J. Geophys. Res.*, 102, 16 663–16 682, 1997.
- Pierret, R., Berne, P., Roussel, C., and Le Guern, F.: The Lake Nyos disaster: model calculations for the flow of carbon dioxide, *Journal of Volcanology and Geothermal Research*, 51, 161–170, doi:10.1016/0377-0273(92)90066-M, 1992.

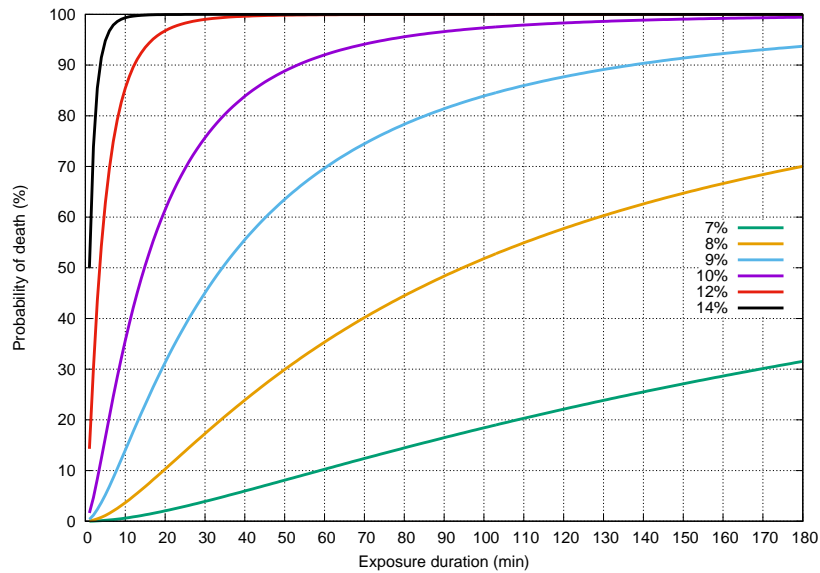


Figure 1. Percentage of fatalities (probability of death in %) depending on exposure duration (in min) according to eq. (7). Values are shown for different values of CO_2 concentration ranging from 7% to 14% vol.

- Ranaboldo, M., Giebel, G., and Codina, B.: Implementation of a Model Output Statistics based on meteorological variable screening for short-term wind power forecast, *Wind Energy*, 16, 811–826, doi:10.1002/we.1506, 2013.
- Rouwet, D., Tanyileke, G., and Costa, A.: Cameroon’s Lake Nyos gas burst: 30 years later, *EOS*, 97, doi:10.1029/2016EO055627, 2016.
- Sanz Rodrigo, J., Garcia, B., Cabezón, D., Lozano, S., Martí, I., and García, B.: Downscaling mesoscale simulations with CFD for high resolution regional wind mapping, in: *Proc. European Wind Energy Conference (Warsaw, Poland)*, April, 2010.
- Skamarock, W. C., Klemp, J. B., Dudhia, J., Gill, D. O., Barker, M., Duda, K. G., Huang, X. Y., Wang, W., and Powers, J. G.: A description of the Advanced Research WRF Version 3, Tech. rep., National Center for Atmospheric Research, 2008.
- Tuttle, M., Clark, M., Compton, H., Devine, J., Evans, W., Humphrey, A., Kling, G., Koenigsberg, E., Lockwood, J., and Wagner, G.: The 21 August (1986) Lake Nyos gas disaster, Cameroon, Tech. rep., US Geol Surv Open-File Rept, 1987.
- Vázquez, M., Houzeaux, G., Koric, S., Artigues, A., Aguado-Sierra, J., Arias, R., Mira, D., Calmet, H., Cucchiatti, F., Owen, H., Taha, A., Burness, E. D., Cela, J., and Valero, M.: Alya: Multiphysics engineering simulation toward exascale, *Journal of Computational Science*, 14, 15–27, doi:http://dx.doi.org/10.1016/j.jocs.2015.12.007, 2016.
- Zhang, Y.: Dynamics of CO_2 -driven lake eruptions, *Nature*, 379, 57–59, doi:10.1038/379057a0, http://dx.doi.org/10.1038/379057a0, 1996.

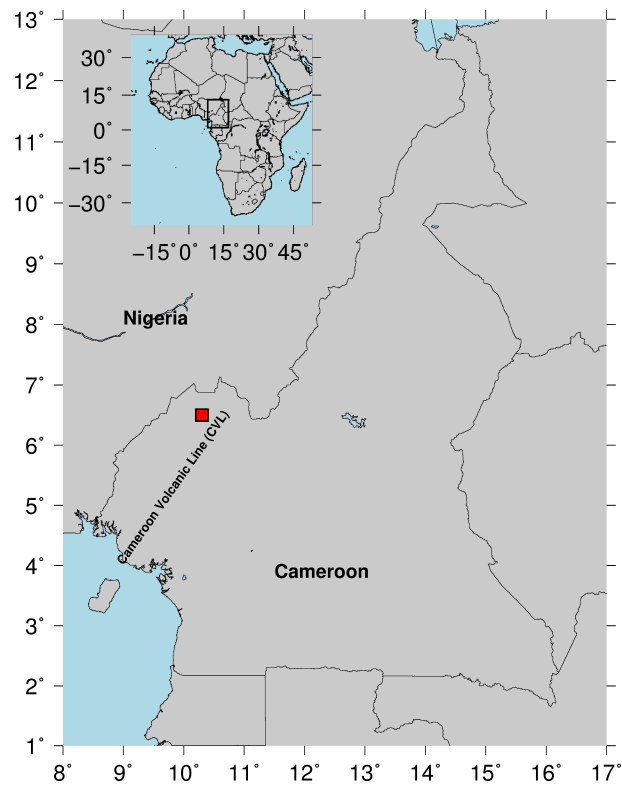


Figure 2. Map of Cameroon showing the lake Nyos area (red square).

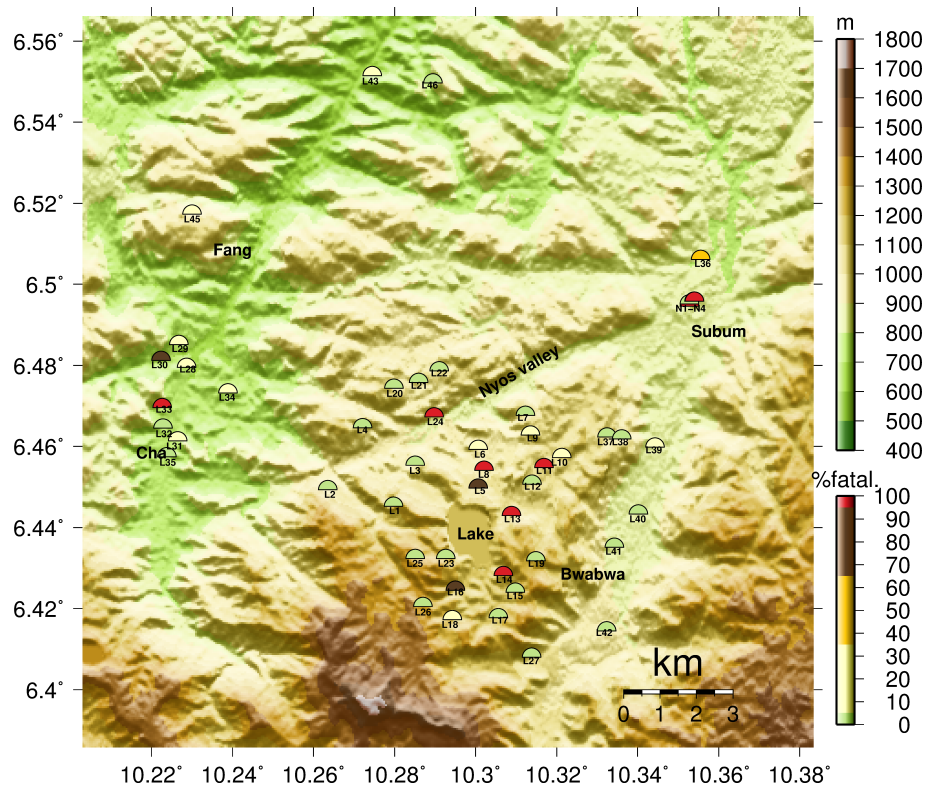


Figure 3. Topographic map of the area around Lake Nyos showing elevation contours (in m a.s.l.). The locations listed in Table 1 are shown by halved circles coloured according the percentage of fatalities (in %) reported by Le Guern et al. (1992).

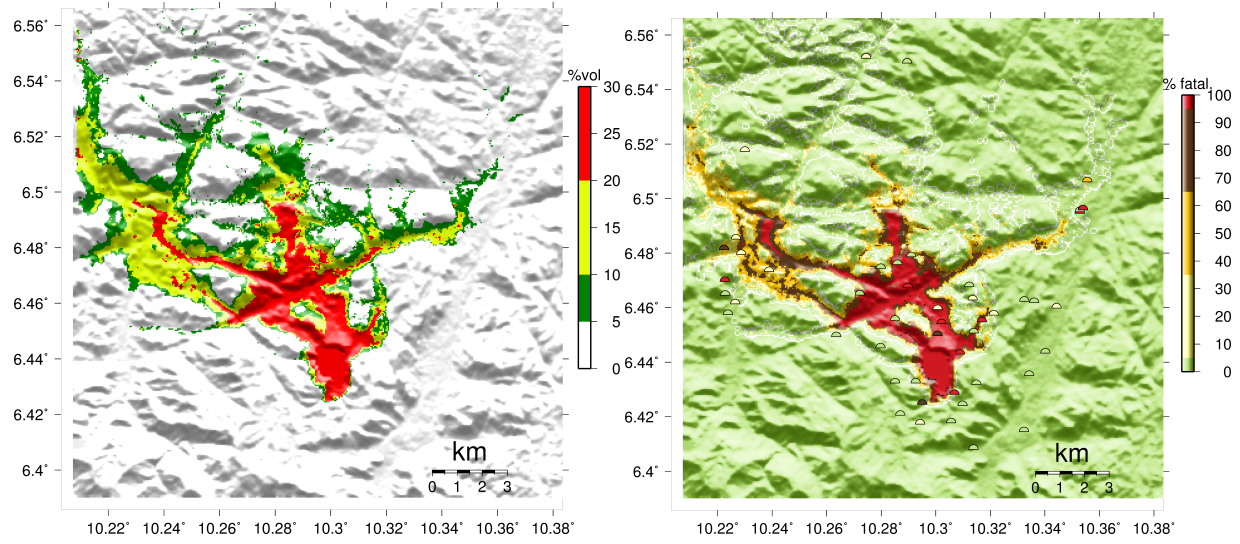


Figure 4. Previous modelling results from Costa and Chiodini (2015) scenario-II (4h of gas emission assuming a constant mass flux of $1.4 \times 10^5 \text{ kgm}^{-2}\text{d}^{-1}$ from a diffuse source of $235 \times 235\text{m}^2$). Left: maximum CO_2 concentration (%vol.) achieved at 1 m height. Right: percentage of fatalities (in %) predicted by the model applying eq. (7) at 1 m height. Halved circles show the actual reported percentages at locations using the same color scale.

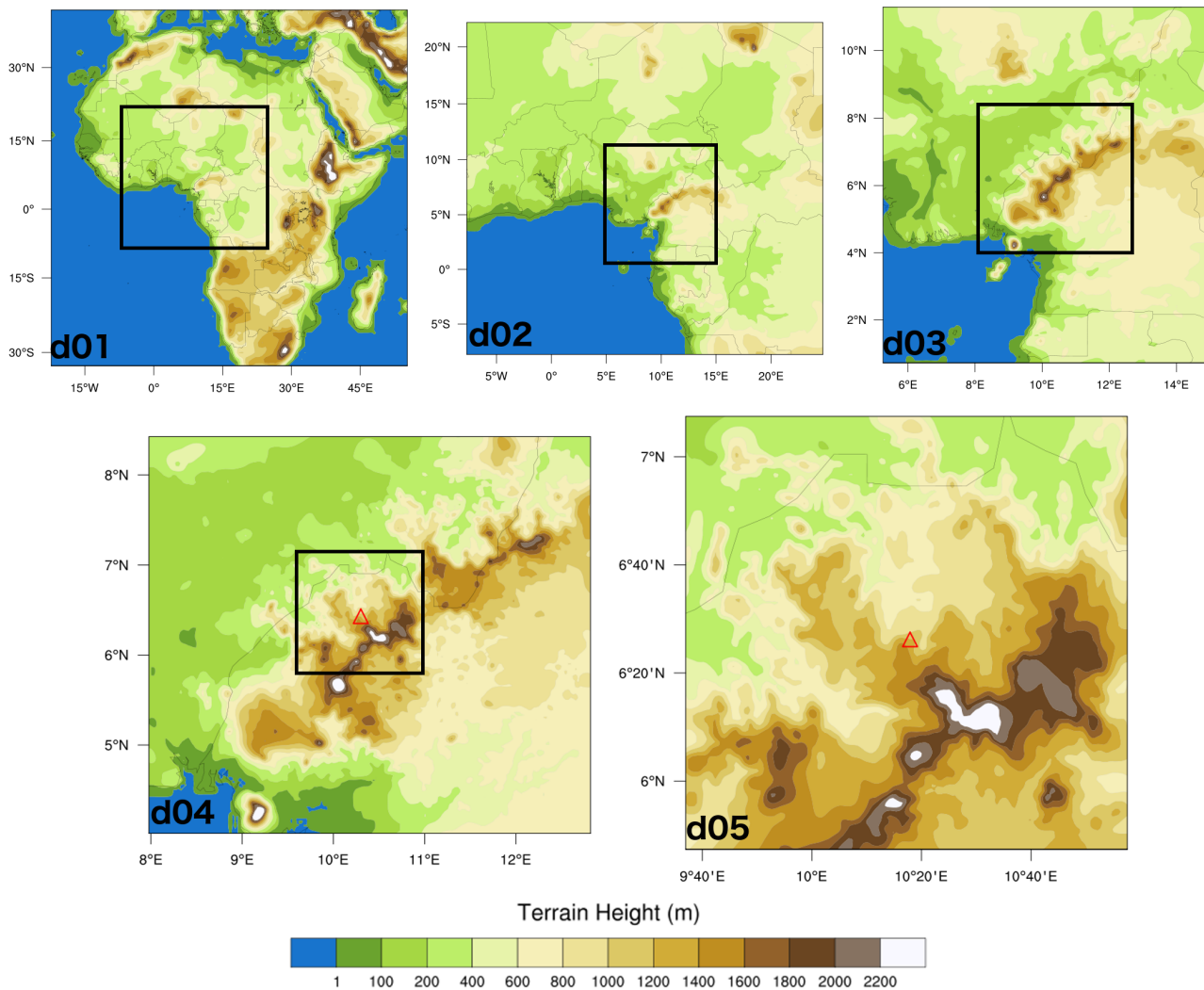


Figure 5. WRF-ARW domains for the Nyos run. The model configuration consists of one parent domain (d01) at 81 km horizontal resolution and 4 nests (d02 to d05) at 27, 9, 3, and 1 km resolution centred at the Lake Nyos (red triangle, not on scale). Color contours indicate the WRF-ARW model topography at each resolution.

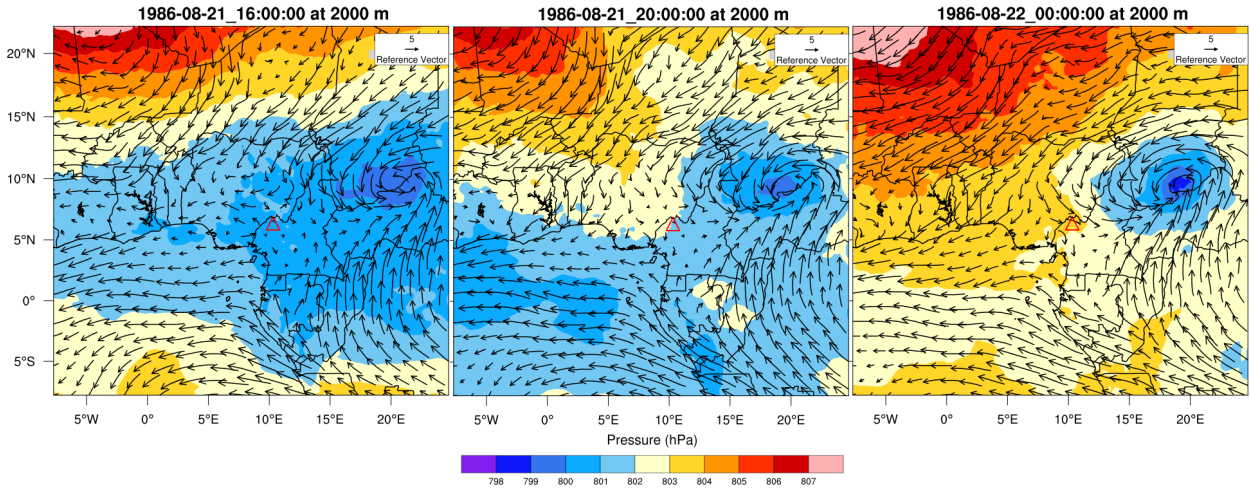


Figure 6. Synoptic meteorological situation according to the WRF-ARW simulation showing pressure contours (hPa) and wind vectors (m/s) for domain d02 (first nest, 27 km resolution domain) at 2000 m height above sea level. Results for 21 Aug 1986 at 16:00 (left), 20:00 (center) and 24:00 (right) UTC. The red triangle shows the location of the Nyos lake. For clarity, only few model wind vectors are shown.

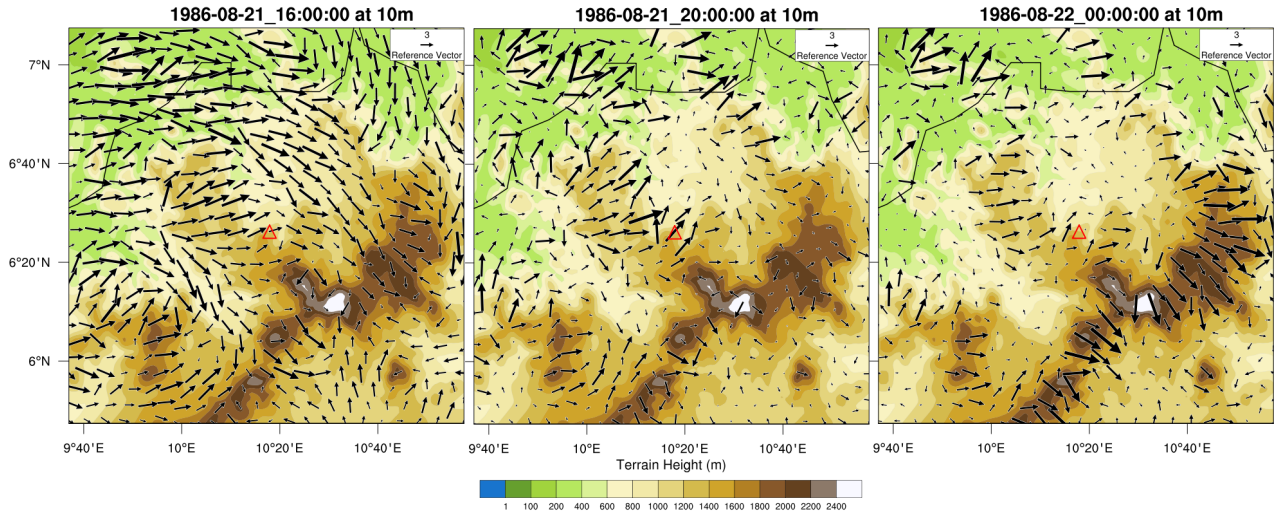


Figure 7. Local meteorological situation according to the WRF-ARW simulation showing terrain height contours (m a.s.l.) and wind vectors (m/s) for domain d05 (last nest, 1 km resolution domain) at 10 m above the surface. Results for 21 Aug 1986 at 16:00 (left), 20:00 (center) and 24:00 (right) UTC. The red triangle shows the location of the Nyos lake. For clarity, only few model wind vectors are shown.

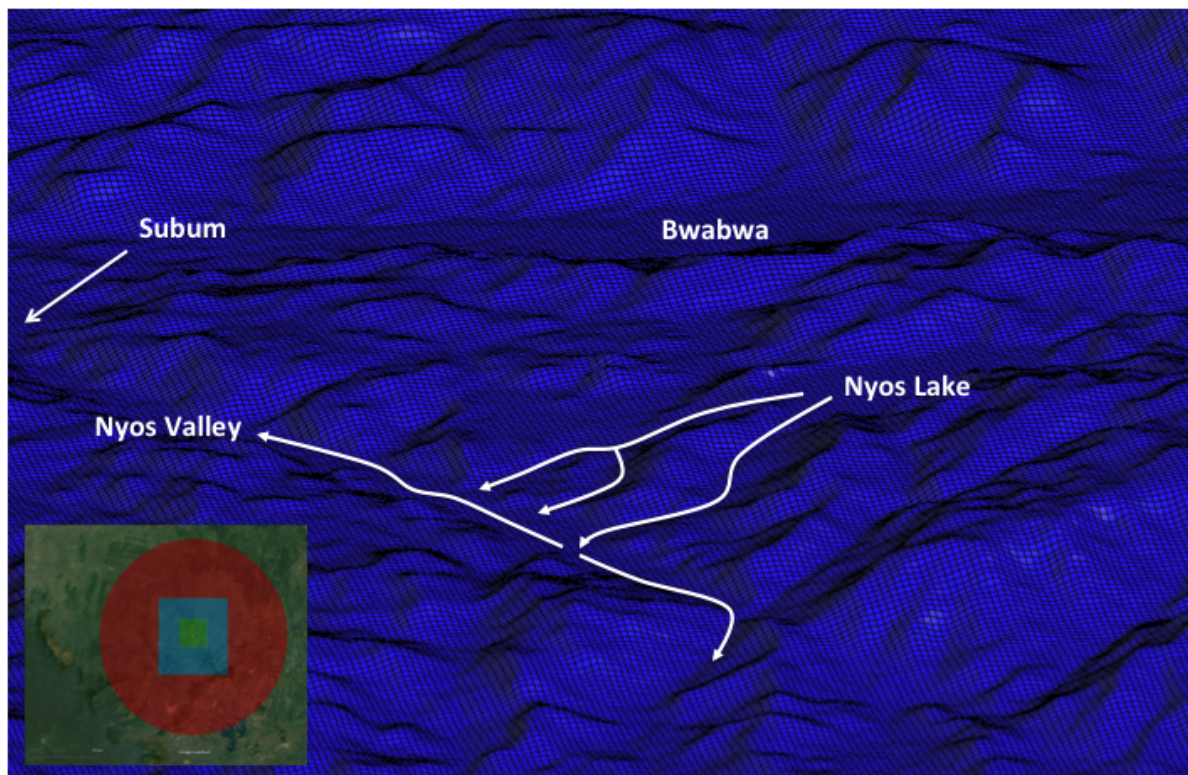


Figure 8. Detail of the ALYA-CFDWind computational mesh (50m horizontal resolution) around the Nyos lake. The bottom-left inset shows the extent of the computational domain composed of 3 differentiated zones, flat buffer (red), transition (pale blue), and inner domain (green) at 50m resolution containing the detailed terrain information. The arrows indicate the approximate gas flow path according to observations.

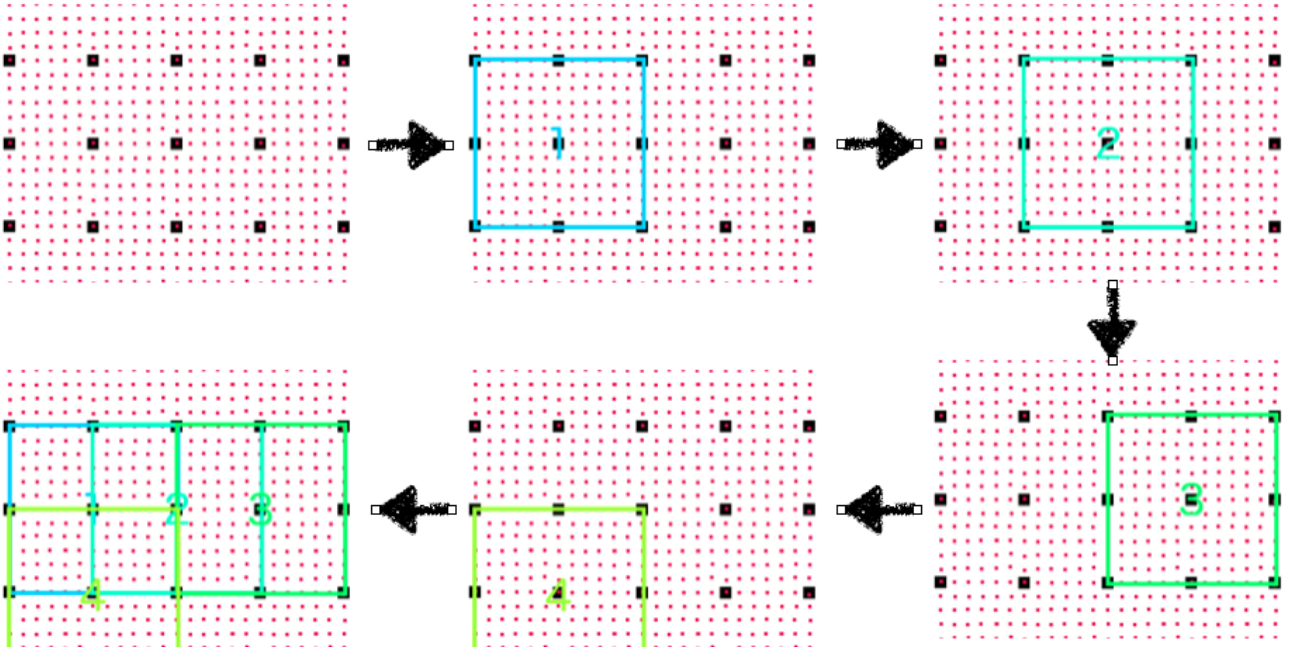


Figure 9. Segmentation strategy adopted for downscaling on a 2D plane Ω_{2D} . A patch or segment S_{ij} is defined for each WRF-ARW grid mass-point (black squares) containing many ALYA-CDFWind grid points (red small squares). The last plot shows the overlapped region.

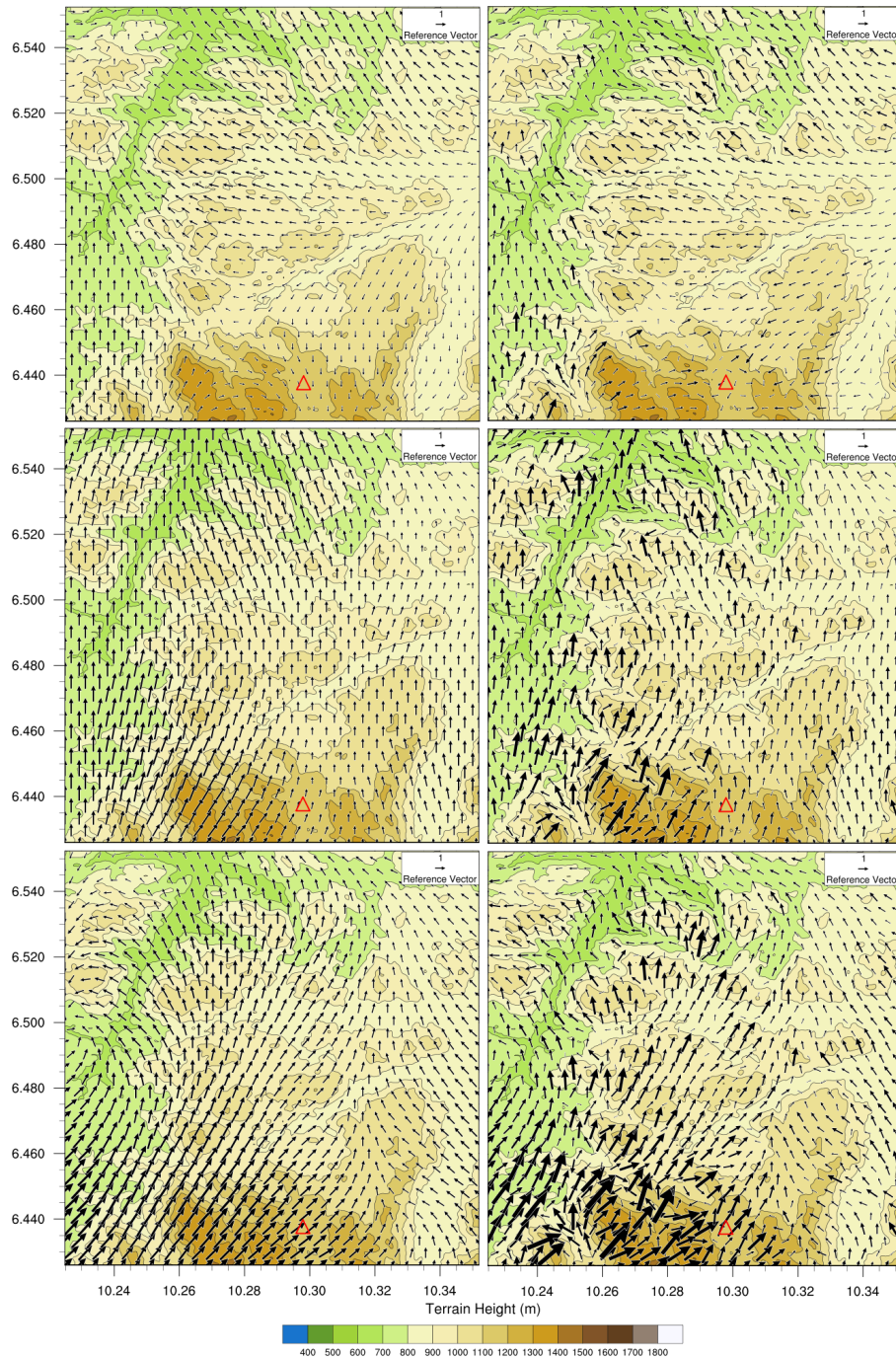


Figure 10. Wind vectors at 10 m above terrain as given by WRF-ARW at 3 km resolution (left column) and the downscaling (right column) for 21 Aug 1986 at 18:00 (top), 19:00 (middle) and 21:00 (bottom) UTC. For visualisation and point-to-point comparison purposes, WRF results have been interpolated to the CFD mesh and, when necessary, extrapolated below its lower level. The red triangle shows the location of the Lake Nyos.

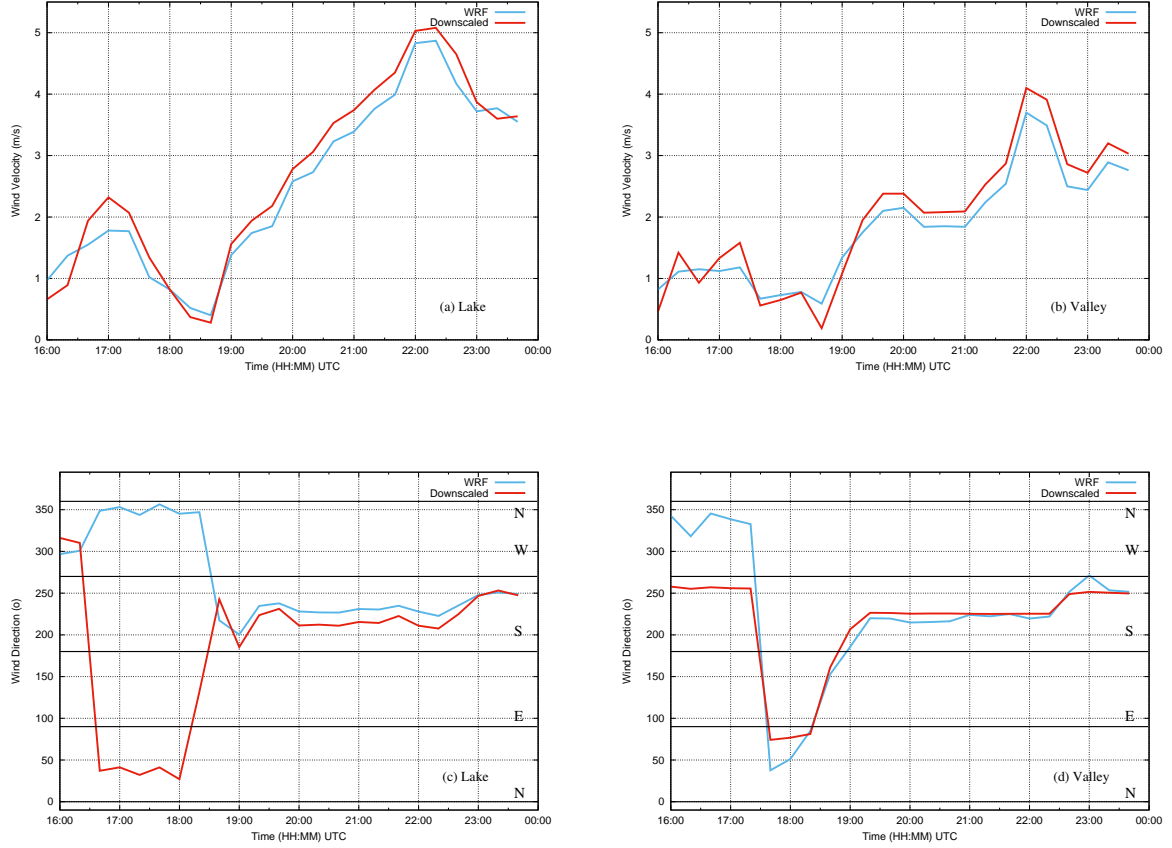


Figure 11. Time series of 10-m wind speed and direction at two points located at the Nyos lake (a,c) and at the bottom of the Nyos valley (b,d). Results from WRF simulations at 1 km resolution (blue lines) and downscaling using ALYA-CFDWind at 50 m (red lines). Wind direction criterion is that of the coming direction, *i.e.* 0° indicates wind coming from the N, 90° coming from the E, etc. Note the sudden short-lived wind veering from NE to SW starting at around 18:00 UTC.

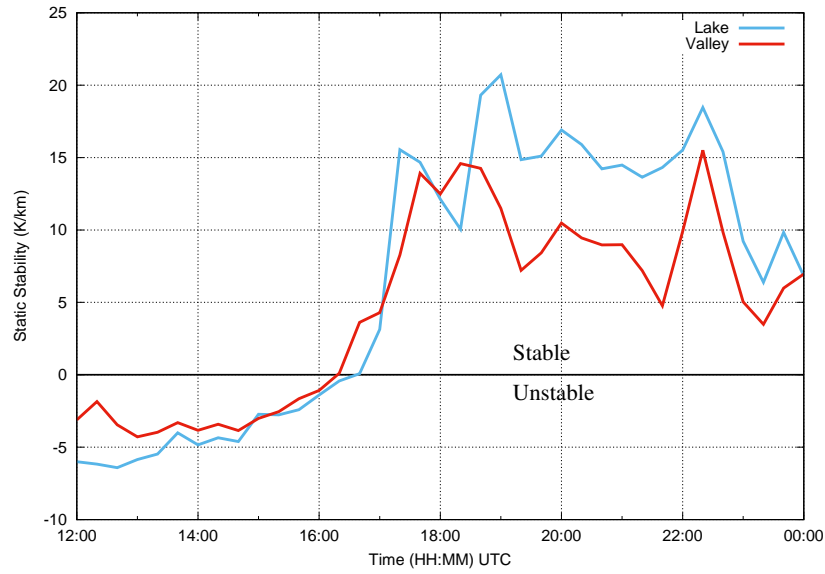


Figure 12. Static stability (gradient of potential temperature in $^{\circ}\text{Kkm}^{-1}$) versus time at the same two points than in Fig. 11 (lake in blue and valley in red) according to WRF simulations at 1 km resolution. The potential temperature gradient has been computed using WRF σ -levels 1 and 6, at roughly 12 and 100 m above terrain, respectively. Positive values indicate stable atmosphere. Note the transition from unstable to stable stratification occurring after 16:00 UTC.

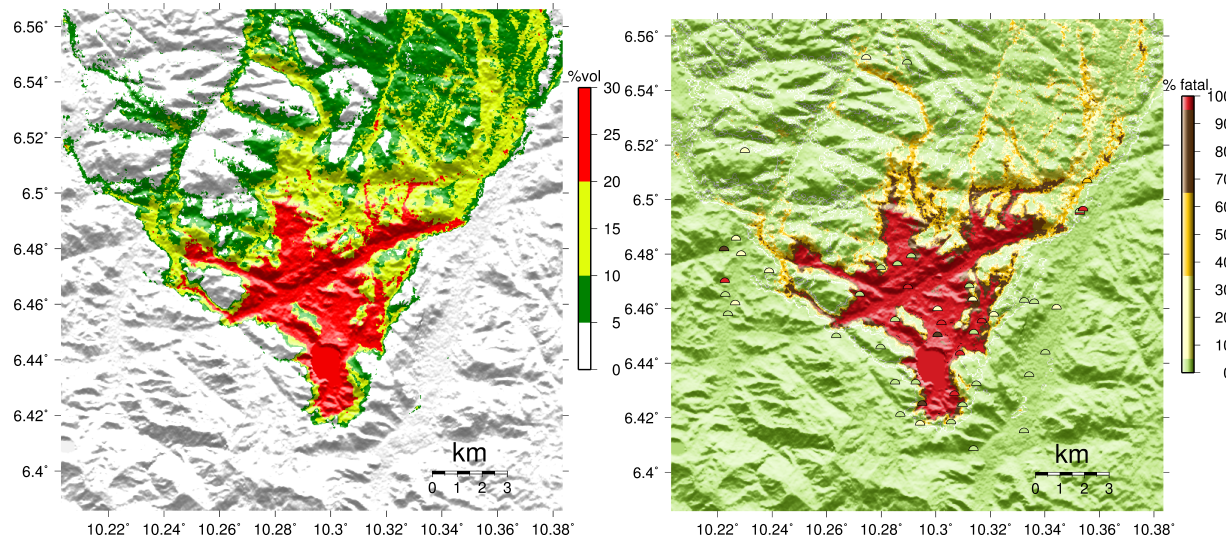


Figure 13. Best fit simulation results. Left: maximum CO_2 concentration (%vol.) achieved at 1 m height. Right: percentage of fatalities (in %) predicted by the model applying eq. (7) at 1 m height. Halved circles show the actual reported percentages at locations using the same color scale.

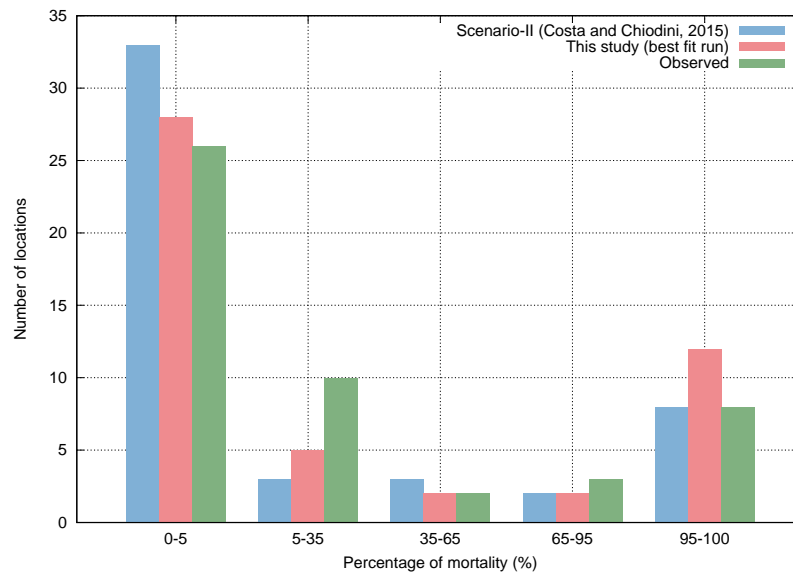


Figure 14. Histogram showing the fit between observations (green bars) and best-fit run (red bars) across the bins. Results from Costa and Chiodini (2015) are also shown for comparison (blue bars).

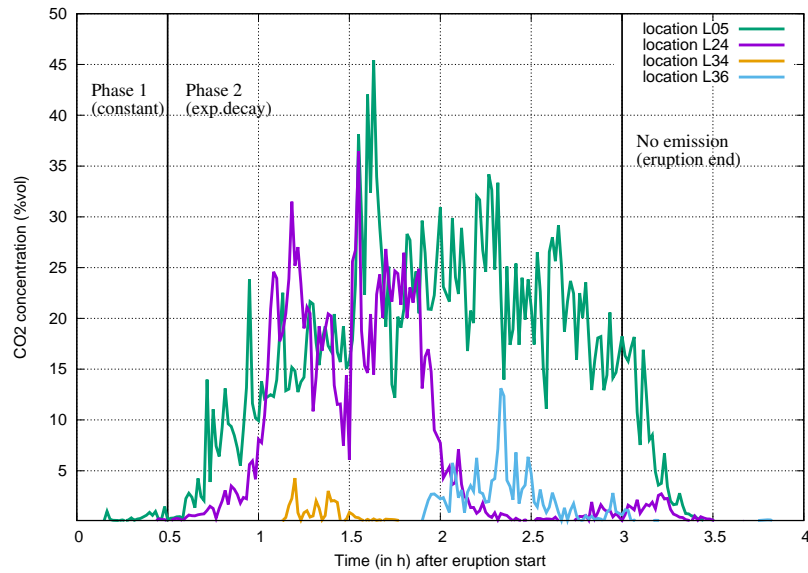


Figure 15. Evolution with time (in h) of CO_2 concentration (%vol.) at different locations for the best fit simulation. Results at 1 m height. Location L05 is near the Lake, L24 at the Nyos valley, L34 near Cha (W branch) and L36 near Subum (E branch). See Figure 3 for details.

Table 1. List of affected points with coordinates and percentage of observed fatalities. (x, y) coordinates are in UTM zone 32N (datum WGS84). Points starting with an L have been digitalised from Le Guern et al. (1992); points starting with an N were obtained by the authors after interviewing survivors in situ. Comments as reported by Le Guern et al. (1992) in their Table 1.

Point	x (m)	y (m)	lon (o)	lat (o)	Fatalities (%)	Comments
L1	641523	712595	10.280	6.445	0	
L2	639726	713051	10.264	6.449	0	
L3	642113	713722	10.285	6.455	0	
L4	640665	714741	10.272	6.465	0	
L5	643829	713105	10.301	6.450	90	
L6	643829	714151	10.301	6.459	20	
L7	645116	715089	10.312	6.468	0	
L8	643989	713588	10.302	6.454	100	
L9	645250	714553	10.314	6.463	15	
L10	646108	713936	10.321	6.457	15	
L11	645625	713668	10.317	6.455	100	
L12	645303	713212	10.314	6.451	0	
L13	644740	712354	10.309	6.443	100	
L14	644526	710719	10.307	6.428	100	A man ran uphill, survived, all cows died
L15	644847	710263	10.310	6.424	0	
L16	643212	710316	10.295	6.425	80	Nobody at the compound, 50 cows died, 15 survived
L17	644392	709566	10.306	6.418	0	
L18	643131	709512	10.294	6.417	25	
L19	645411	711121	10.315	6.432	0	
L20	641523	715813	10.280	6.474	0	
L21	642193	715974	10.286	6.476	0	
L22	642756	716296	10.291	6.479	0	
L23	642944	711174	10.293	6.432	0	
L24	642622	715035	10.290	6.467	99	Nyos village: 6 lived, 600 died
L25	642113	711174	10.285	6.432	0	Upper Nyos; 150 survived, 0 died
L26	642327	709861	10.287	6.420	0	
L27	645303	708493	10.314	6.408	0	Several compounds, 40 survived, 0 died
L28	635865	716376	10.229	6.480	20	12 people survived
L29	635651	716993	10.227	6.485	30	
L30	635168	716564	10.222	6.481	65	

Table 2. cont.

L31	635624	714365	10.226	6.461	25	3 people lived
L32	635222	714714	10.223	6.464	0	
L33	635195	715277	10.223	6.470	100	15 people died
L34	636991	715679	10.239	6.473	30	Cha village: 130 survived, 58 died
L35	635329	713936	10.224	6.457	0	
L36	649888	719352	10.356	6.506	50	Subum village: 400 lived, 400 died
L37	647341	714499	10.332	6.462	0	
L38	647743	714446	10.336	6.462	0	
L39	648655	714231	10.344	6.460	20	
L40	648199	712408	10.340	6.443	0	
L41	647556	711496	10.334	6.435	0	Mgombe: 160 lived
L42	647341	709217	10.332	6.415	0	Upper Mgombe: 150 lived
L43	640906	724340	10.274	6.551	10	
L44	642622	731794	10.290	6.619	5	
L45	635999	720559	10.230	6.517	0	
L46	642568	724152	10.289	6.550	0	
L47	638305	727235	10.251	6.578	0	
L48	641549	728844	10.280	6.592	0	
L49	640557	729756	10.271	6.600	0	
N1	649581	718074	10.353	6.495	100	
N2	649581	718136	10.353	6.495	0	
N3	649713	718210	10.354	6.496	50	
N4	649719	718210	10.354	6.496	100	

Table 3. WRF-ARW model configuration and physical parameterizations used for the 1986 Lake Nyos simulations.

WRF-ARW configuration	
Model version	3.4.1
Initial and Lateral BC's	NCEP/DOE Reanalysis-2
Domains	1 parent + 4 nests
Horizontal resolutions	81 km (parent) and 27, 9, 3, and 1 km (nests)
Horizontal grid sizes	110×110 (parent) and 136×127, 121×133, 181×166, and 151×151 (nests)
Vertical levels	60 levels, with top at 70 hPa
Simulation length	48 h (spin-up of 24 h)
Time step	180 s (parent), ratios of 1/3 for nests
Parametrization	Scheme
Microphysics	WRF single-moment 6-class (WSM6) (Hong and Lim, 2006)
Cumulus	Modified Kain-Fritsch (disabled for 1 km nest) (Kain, 2004)
Surface Layer	MM5 Monin-Obukhov
Land Surface	Unified Noah Land Surface Model (LSM) (Chen and Dudhia, 2001)
Planet Boundary Layer	Mellor Yamada Janjic (MYJ) (Janjic, 1994)
Long-wave Radiation	Rapid Radiative Transfer Model (RRTM) (Mlawer et al., 1997)
Short-wave Radiation	Dudhia (Dudhia, 1989)

Table 4. Source term settings used in the different groups of simulations. Table shows the considered ranges for eruption starting time, total CO_2 emitted mass, CO_2 mass flux, and constant of decay (or growth) for the exponential phase.

Run group	Source type	Starting time (UTC)	Total mass (Tg)	Mass flux (given parameter) ($10^4 \text{ kg m}^{-2} \text{ d}^{-1}$)	Constant of decay (growth) for the exponential phase (10^{-4} s^{-1})
1	Constant (180 min)	17:30	0.78 – 1.56	10 – 20	-
2	Linear decrease (180 min)	17:30	0.78 – 1.56	from 19 – 28 to 1 – 2	-
3	Linear increase (180 min)	17:30	0.78 – 1.56	from 1 – 2 to 19 – 28	-
4	Exponential decrease (180 min)	17:30	0.78 – 1.56	-	2 – 10
5	Exponential increase (180 min)	17:30	0.78 – 1.56	-	5
6	Constant (60 min) + Exponential decrease (120 min)	17:30	0.16 – 2.34	1 – 15 (for constant phase)	2 – 4
7	Constant (30 min) + Exponential decrease (90 to 210 min)	16:30, 17:00, 17:30	0.16 – 2.34	0.1 – 50 (for constant phase)	2 – 25

Table 5. Source term characteristics of the best fit simulation showing total CO_2 emitted mass, mass flux variation, χ^2 , and Mean Absolute Error (MAE) considering the 5-class binning criterion.

Duration (hour)	Total mass (Tg)	Mass flux ($10^4 \text{ kg m}^{-2} \text{ d}^{-1}$)	χ^2	MAE (%)
3	0.86	4 for 30 min followed by a burst to 18 and 150 min exponential decay	4.98	34.7