

Interactive comment on “Landslide susceptibility assessment of the part of the North Anatolian Fault Zone (Turkey) by GIS-based frequency ratio and index of entropy models” by Gökhan Demir

G. DEMÄR

gokhan.demir@omu.edu.tr

Received and published: 30 December 2016

Dear Editor, I send a new location map for the area. I hope that these map is much better. Sincerely.

Interactive comment on Nat. Hazards Earth Syst. Sci. Discuss., doi:10.5194/nhess-2016-327, 2016.

C1

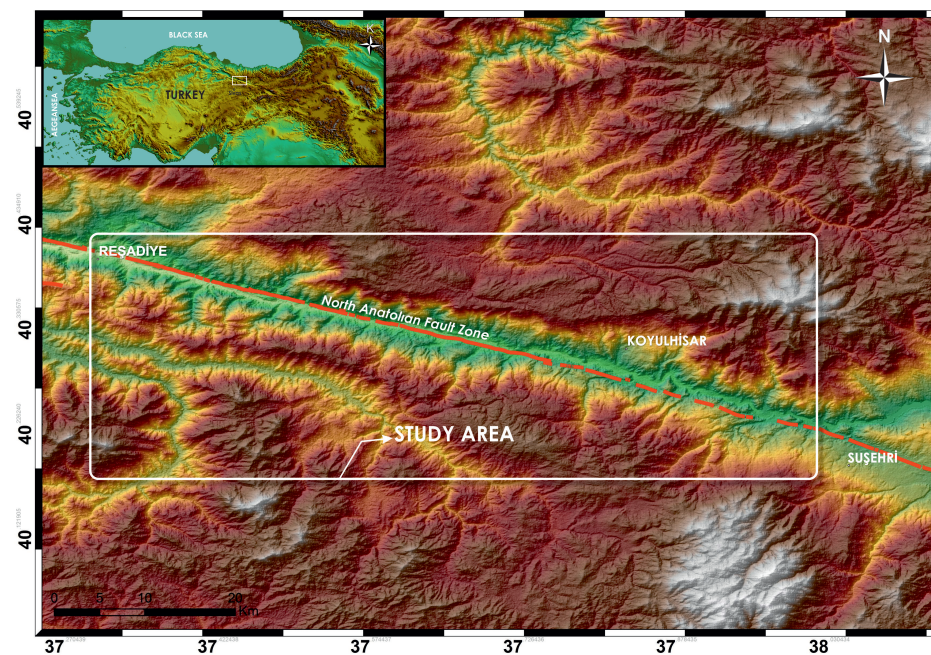


Fig. 1.

C2