

Reply to the reviewer comments for the Martinotti et al. 2016 manuscript “Landslides, floods and sinkholes in a karst environment: the 1-6 September 2014 Gargano event, southern Italy”

Reviewer 1: Anonymous

The manuscript of Martinotti and co-authors entitled “Landslides, floods and sinkholes in a karst environment: the 1-6 September 2014 Gargano event, southern Italy” is an interesting well-structured and well-written manuscript that addresses relevant scientific and technical questions which are within the scope of NHESS. The authors start with the monography of the hazardous event occurred in the Gargano Region in September 2014 and finish with the proposition of an algorithm to forecast geo-hydrological hazards. However it needs minor to moderate revisions prior to be published.

We thank the Reviewer for considering the manuscript interesting, well-written and well-structured. We are particularly thankful for her/his opinion about the fact that the manuscript addresses relevant scientific and technical questions.

Specific Comments

1. Authors made a very detailed analysis (1 hour time step) of the rainfall event occurred in Gargano region in September 2014, including the evaluation of the NonExceedance Probability, and the corresponding duration in hours. However, from the 46 inventoried landslides triggered during the event, the reasonably accurate information about the period of occurrence is only available for 9 landslides. This is a major limitation of the work. Apparently, there is discordance between the detail of the rainfall data and the landslide information.

The time resolution of rainfall data and the temporal accuracy of the landslides are independent. We attribute the poor accuracy in the occurrence time of the majority of the failures to the difficulty to reach some of the places where the landslides occurred, and to the fact that many landslides occurred in the evening or during the night, and were reported only several hours after the event. Nevertheless, we want to stress that even if the temporal uncertainty is large, plots in Figure 10 show that the temporal ranges defined for the possible occurrence of the landslides do not significantly affect the prediction capabilities of the E-NEP algorithm.

2. Taking into consideration comment #1, did authors consider treating the rainfall data with less detail (e.g. cumulative rainfall for each 3 or 6 hours)?

We did not take into consideration the hypothesis of considering different intervals for the analysis of the cumulative rainfalls. However, the outcome of such analysis would have resulted in less detailed plots (e.g. cfr. Fig. 10) with histograms having larger bins and lines showing abrupt steps. We think that we would not have obtained relevant information from the observations of those plots.

3. Can authors provide any information about the exceptionality of the September 2014 rainfall event? What is the estimated return period of the event?

Unfortunately, we only have rainfall data for a 7-years period for the selected rain gauges. For this reason, we cannot add nothing more than what we have reported in the manuscript (Figure 4): except for the Monte Sant'Angelo rain gauge, the 1–6 September rainfall period exhibited the highest cumulated rainfall in the observation period.

4. Apparently, authors follow the Cruden and Varnes (1996) classification of landslides. However, it is not clear how they distinguish soil slips and soil slides, referred in page 5, line 13.

There was an error in preparing the first version of the manuscript, and the soil slips are actually earth flows. We amended the text accordingly.

5. Referred Landslide clusters A,B,C and D should be clearly showed, for example in figure 5.

We thank the Reviewer for the suggestion that improves the readability of the paper and of the figure. Figure 5 now includes the location of the clusters.

6. Authors verified that significant similarities exist in the temporal evolution of the metrics computed by the E-NEP algorithm. But, to which extent is this results controlled by the specific characteristics of the registered rainfall events?

This is a good point and we are thankful to the Reviewer for the question. As stated in section 5 (Discussion), the analysis of the rainfall records (Fig. 10) highlights that neither the rainfall intensity nor the cumulative rainfall could be considered diagnostic for the detection of the rainfall conditions responsible for landslides. We also observe that the evolution of the precipitation, before and during the landslide occurrence time, was different among the four clusters. In the different clusters, the specific characteristics of the rainfall events are different. Surprisingly, the E-NEP metric, in the period of the landslide occurrence, is not affected by this variability. Landslides have occurred, in all the cases, as soon as (i) the NEP_{max} metric reached the maximum value and (ii) all the NEP percentiles increase abruptly. We conclude that, at least for this study, the results obtained using the E-NEP metrics are not controlled by the specific characteristics of the rainfall events.

7. Looking on the period VI in Table 1, it is arguable to consider as “dry” a 11-hour period with 1.8 mm/hour rainfall intensity.

Thank you for the remark. We used the term nearly-dry for classifying that period in the manuscript.

Minor adjustments

Page 4

line 23 “record available” instead of “record available to us”.

Done.

line 25 Include a reference to figure 5 (e.g. after sinkholes). It is desirable that figure 5 is referred in text prior to figure 6.

We thank the Reviewer for her/his advice, we added a citation of Figure 5 before that of Figure 6.

Page 5

line 7 “the towns of Cagnano Varano and Carpino (Fig. 5)”.

Done.

Page 8

line 14 Reference to figure 2 is inadequate.

Done. Reference deleted.

line 17 Reference to figure 3 is inadequate.

Done. Reference deleted.

Page 10

line 25 The reviewer would not include rock falls in the group of landslides authors are dealing with.

It is true that rock falls are the landslides types that are less related to rainfall. We removed them from the text.

Page 11

line 14 “High infiltration to shallow depth in the rock mass facilitates the formation of flash floods”. This is not clear.

In order to better explain the meaning of the previous sentence, the paragraph has been modified and rewritten as follows.

“In the karst environment of the Promontory, rainfall infiltration is efficient even for high intensity rainfall rates. This limits the occurrence of landslides, except for very intense (i.e., “extreme”) rainfall events. On the other hand, arrival of great amount of rainfall in a setting typically characterized by water infiltrating within the rock mass through the network of conduits and joints, highly facilitates the formation of flash floods, particularly in small catchments, as has been frequently registered also in other parts of Puglia (Parise, 2003; Mossa, 2007). Further, karst aquifers have very poor retention capacity. These, and other characteristics as well, allow to identify the flash floods as one of the main hazards in karst terrains (Fleury et al., 2013; Gutierrez et al., 2014; Parise et al., 2015).”

Figure 2

Reconsider the caption of figure 2. The area covered by images is much larger than the Gargano Promontory. I suggest using “over the central and southern Italy” instead of “in the Gargano Promontory”.

Done.

Figure 6

The caption of photo F is missing. 1-6 September instead of 11-6 September.

Photo F is considered together with photo C in the figure caption. We corrected the dates.

Figure 7

Landslide inventory map instead of Inventory map.

Done.

Reviewer 2: J. De Waele (jo.dewaele@unibo.it)

General comments

The paper is well constructed, and describes an exceptional rainfall event and the natural hazards it created. It analyses rainfall data accurately and relates this event to the hazards that occurred in the territory using the E-NEP algorithm. It fails however to validate this new evaluation method (as early warning system) because of a scarce knowledge on the timing of hazardous events. This paper thus does not really give a great advance in what we know about natural hazards caused by heavy rainfall. It simply describes an exceptional rain event in detail, gives some general information on the hazards this event caused, and then explains that these happened because of heavy rainfall and high intensity. Nothing really new. The method looks promising (E-NEP) but would need to be validated on a more detailed database of well-known hazards of which the timing is known in detail.

We thank the Reviewer for his comments. The scope of the paper is indeed the development of a new algorithm (E-NEP) to analyze rainfall events responsible for geo-hydrological hazards in order to predict their occurrence. The tool was successfully applied to the 2014 Gargano event, where it turned to be able to predict the occurrence of the observed landslides. We maintain that the new algorithm can contribute to forecast the possible occurrence of rainfall-induced landslides and to ascertain landslide hazard.

Below, we address detailed comments and describe the modifications we have made to the manuscript.

Detailed comments

1. you overuse many terms, and parts of sentences. Why geohydrological hazards? I would simply use hydrogeological hazards. The word (geohydrological) is used too often throughout the manuscript (6 times in the introduction only!). Avoid repeating too much terms like this, or the list of hazards (landslides, flash floods, inundations and sinkholes).

The text was amended in order to avoid repetitions. However, we prefer to use the term “geo-hydrological” instead of “hydrogeological”. We believe that the term “geo-hydrological hazards” is more apt to delineate the range of phenomena that encompass, among the others, the landslides, floods, debris flows, sinkholes, erosions. In addition to a wide use of the term geo-hydrological in the scientific literature, this is also explained in a recent document discussing the Italian National Strategy for the Adaptation to the Climatic Changes (SNAC): Castellari S., Venturini S., Ballarin Denti A., Bigano A., Bindi M., Bosello F., Carrera L., Chiriaco M.V., Danovaro R., Desiato F., Filpa A., Gatto M., Gaudio D., Giovanardi O., Giupponi C., Gualdi S., Guzzetti F., Lapi M., Luise A., Marino G., Mysiak J., Montanari A., Ricchiuti A., Rudari R., Sabbioni C., Sciortino M., Sinisi L., Valentini R., Viaroli P., Vurro M., Zavatarelli M. (a cura di.) (2014). Rapporto sullo stato delle conoscenze scientifiche su impatti, vulnerabilità ed adattamento ai cambiamenti climatici in Italia. Ministero dell’Ambiente e della Tutela del Territorio e del Mare, Roma.

2. There is not much geological information on the landslides or other hazards. Of course they cannot be explained all in detail, but a table should be included giving some information on each landslide, sinkhole, flood... material involved, type of landslide,

thickness of soil, inclination, dimensions, exposition, altitude, soil cover... Landslide are caused by many factors, not only rain. You simplify also a lot. E.g. Soils are thin or absent... looking at Figure 6 I see a lot of soil!

We acknowledge that geological and geomorphological information on the hazards is quite poor, but it is not relevant for the application of the E-NEP algorithm.

Nevertheless, we modified section 3.3 adding more details about the data, as follows: "The consequences of the storm of September 2014 were reported soon after their occurrence, and a first analysis was carried out immediately in its aftermath. The collection of information was obtained searching different sources: (i) field surveys, (ii) technical reports produced by geologists; and (iii) on-line national, regional, and local newspapers.

The collected information allowed reconstructing the geographical coordinates of each phenomenon, its occurrence date, and the type of hazard.

No geological and geomorphological details were available for the landslides, especially when the information was found in newspapers. A specific landslide catalogue was built and managed in a GIS environment. The catalogue lists the following items: (i) event identification code, (ii) source of information, (iii) landslide location (geographic coordinates, municipality, province), (iv) occurrence date and time (if available), (v) spatial and temporal accuracy, and (vi) landslide type.

As concerns floods, the main information regarded the interested areas, the reported damage, and the extent of the flooded territory. Information on sinkholes included the occurrence site obtained through field surveys (high geographical accuracy), and the occurrence time, which was mostly based upon interviews with local inhabitants (low to medium temporal accuracy)."

We acknowledge that the statement about the soil thickness is too much generic and we removed it from the manuscript.

3. Figure 5: I would show the clusters (A, B, ...) on this map, and also use smaller symbols for the registered events (now I count 30 circles for landslides, while there should be 46!). I also suggest to distinguish the types with different symbols or colors. If needed the three most densely packed areas might be increased in size (use insets and detailed maps if needed). What are the difference between soils slips and soil slides? Did all these events REALLY occur during the rainfall events (in this period) or are some older or occurred after the considered period. How much fieldwork has been done here? It almost looks as if most of the work has been done on a computer without really studying the hazards in the field. Did you mostly work on a database given by different authorities (like civil protection, fire corps, forestry department, mairs,).

We thank the Reviewer for advices. We confirm that the map contains 46 circles, but some of them are really close to each other or overlapped. Smaller symbols would make them not visible. According to the Reviewer suggestion, we used different symbols and colors to describe the different types of hazards. We think that using insets would make the figure too much complex without providing additional and substantial information.

We acknowledge that there was an error and soil slips of the original manuscript must be intended as earth flows. We have amended the text accordingly.

In the reply to comment 2 we specified that: "The consequences of the storm of September 2014 were reported soon after their occurrence, and a first analysis was carried out immediately in its aftermath. The collection of information was obtained searching different

sources: (i) field surveys, (ii) technical reports produced by geologists; and (iii) on-line national, regional, and local newspapers”.

4. Self-citation: Parise is cited 8 out of 28, Guzzetti 4 etc. Some citations are probably not really needed (Cannon et al. 2003, De Graff et al, 2013).

Some of the self-citation have been deleted, in order to reduce their overall number. However, we have to point out that there are not many works about hazards in karst in the study area, which forced in some ways to cite the existing ones, most of which include authors of the present manuscript.

5. It is strange to put different hazards together. Sinkholes, floods and landslides do not have a lot of genetic mechanisms in common. Of course they form more easily under heavy rainfall, but that is their only important common point. I would have focused on landslides, trying to have more detail on those...

The paper deals with the natural hazards triggered by the September 2014 storm. Two outcomes of the manuscript are that: (i) landslides are not the only hazards that may occur in the Gargano promontory during heavy rainfalls and (ii) more accurate information are needed on the time or period of occurrence of sinkholes. Indeed, we cannot exclude that even those hazard, analogously to landslides and flash floods, can be likely predicted using rainfall thresholds. This was reported at page 11 of the original manuscript: “Based on the analysis of 25 the 1-6 September 2014 Gargano rainfall period, we confirm that in the Promontory, and in similar karst areas, torrential rainfall can trigger sinkholes, and we hypothesise that approaches based on the near-real-time monitoring of rainfall (e.g., the E-NEP algorithm) can be used to forecast the possible occurrence of rainfall-induced sinkholes. We acknowledge that an analysis of a larger number of events is required to test this hypothesis.”.

Minor adjustments

Page 1

15 hydrogeological hazards (I suggest changing this throughout the text).

We removed other occurrences of the term “geo-hydrological”.

17 a karst area in Apulia.

We would prefer using the Italian name Puglia in place of Apulia. The correspondence with the international name Apulia is now given in section 1, where we write “Puglia (Apulia)”.

19 and temporal information.

Done.

24 (E-NEP)

Done.

Page 2

6 delete “by landslides.... inundations”.

Done.

11 characteristics ... delete "Landslides.... sinkholes" and write "natural hazards" instead.
We prefer to list the types of natural hazards discussed in the paper.

20 Apulia (delete Puglia (...))

We would prefer using the Italian name Puglia in place of Apulia.

26 In the area sedimentary rocks crop out...

Done.

Page 3

2 have been reported (instead of exist)... delete "including....sinkholes"

Done.

11 metres

Done.

13 Description of events

Done.

26 stations (instead of rain gauges)

We decided to maintain "rain gauges".

30 dry periods lasting between

Done.

Page 4

8 in this period

Done.

25 delete "landslides and sinkholes"

We rephrased as follows: "in a number of floods, flash floods, landslides and sinkholes ..."

35 translate water height (5.30 m) in flow rate.

We do not have the stage-discharge relationship for the cross-section and so it is not possible to transform the height in flow rate.

Page 5

1 and

Done.

3 flow rate instead of water height

As above.

2 from (not form)

Done.

6 Cagnano-Carpino was a landslide fatality, the flood fatality was at Peschici (see line 25 on page 4). Make up your mind!

We thank the Reviewer. Actually, there was an error in the data we received. Both the fatalities were due to floods. We amended the text consequently.

12 mostly shallow landslides

Done.

13 write 4 and 2 instead of four and two

Done.

22 delete "of landslides"

Done.

Page 6

17 of cumulated

Done.

18 of rainfall exceeded...

Done.

Page 7

1-3 you use 3 times geo-hydrological! use hydrogeological (possibly) and delete sometimes (just use hazards)

Done.

6 Probability (E-NEP) algorithm ... record (delete s)

Done.

10 and d the time...

Done.

18 delete "landslides..... hazards"

We decided to keep it.

28 delete else (first word) and write otherwise

Done.

Page 8

2 possible hazard occurrence ... was calculated (delete using the approach.... (2012)

Done.

Page 9

6 The analysis DNEPmax is of interest

Done.

22 rise following

Done.

27 (E-NEP)

Done.

32 I, on their own, were not....

Done.

Page 10

15 et al., 2007

Done.

30 delete 2003 (not needed) and De Graff et al., 2013 These are difficult-to-find papers.

Done.

32 delete "that lays.... E-NEP."

Done.

Page 11

2 delete (Brunetti..... 2012)

Done.

7 driven hazards

Done.

10 these hazards

Done.

30 Apulia

As above.

Page 12

10 (E-NEP)

Done.

11 sinkholes). insert space For...

Done.

20 events they are abundant

Done.

21 as for the

Done.

Page 14

9 Szonyi

Done.

Page 17

5 sea level

Done.

Page 18

I would have placed the rainfall station in a more logical sequence (from N to S? Or from E to W). Now they are placed rather randomly.

Done.

Page 21

2 1-6

Done.

Page 23

2 scheme

Done.

Page 25

The symbols of landslide are placed in ace rain time interval rather precisely, although you stated that only 9 were known to have occurred at precise intervals. Is this just a graphical representation? Or do you ONLY mention the 9 known ones. Explain please.

We have temporal information only about 9 landslides (4 in cluster A, 1 in cluster B, 1 in cluster C, 3 in cluster D) but we assume these landslides to be representative of the clusters (this is explained in Section 3.3). The landslide occurrence time is provided with an estimated uncertainty represented by the shadowed gray band in Figure 10. We modified the caption to explain it better. In particular, we wrote: "The occurrence time (and the associated uncertainty) of nine landslides (cfr. section 3.3) is used to define the landslide occurrence period of the four clusters ...".

MODIFIED FIGURES

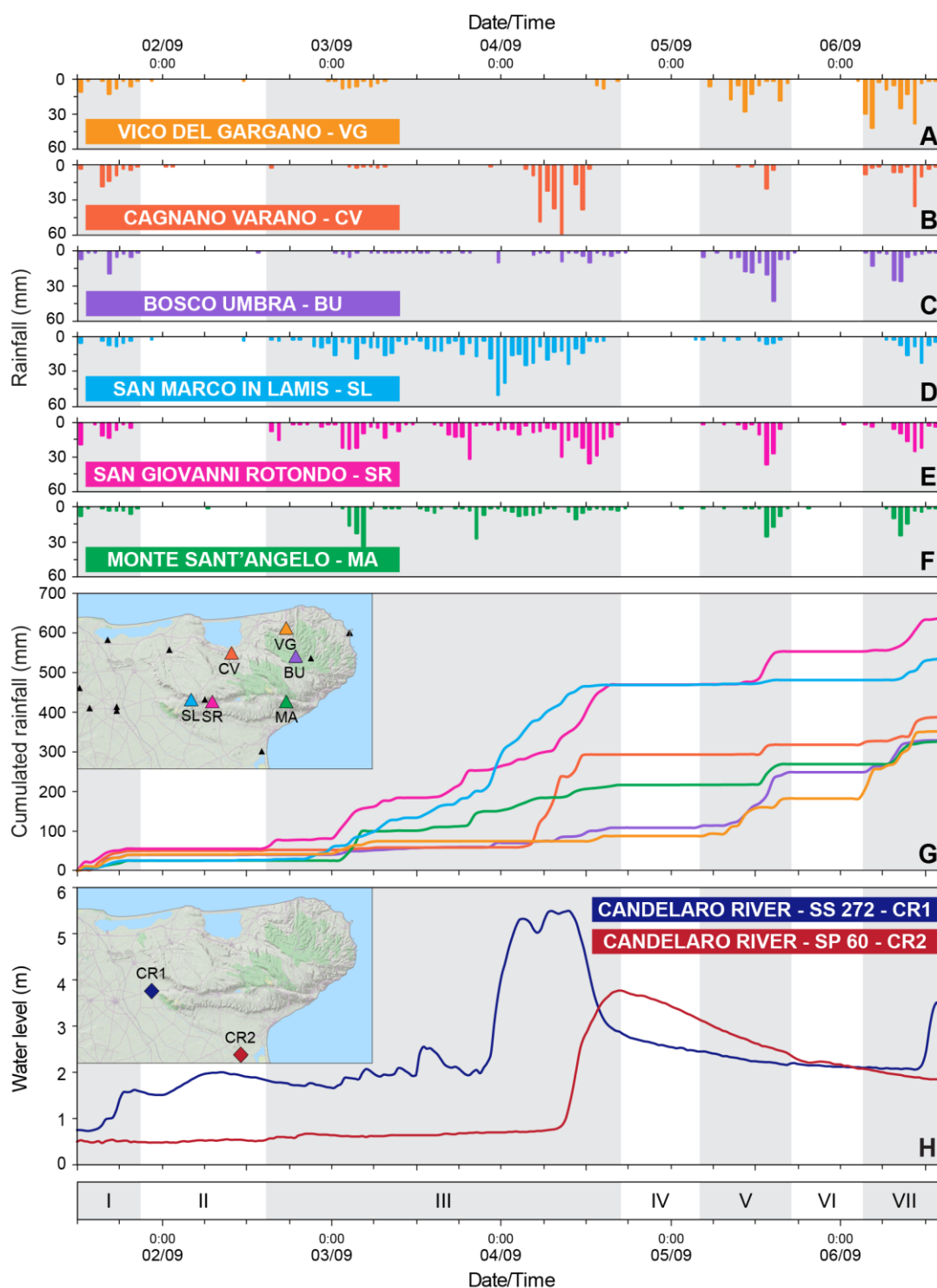


Figure3: Rainfall and hydrological conditions for the period 1-6 September 2014 in the Gargano Promontory. (A) to (F) hourly rainfall measurements for six rain gauges in the study area. (G) Cumulated rainfall for the same rain gauges; inset shows location of the rain gauges. (H) River water level at two gauging stations along the Candellaro River; inset shows location of gauging stations. In the charts, shaded areas are rainfall ("wet") periods (I, III, V, VII) and white areas are no-rainfall ("dry") periods (II, IV, VI).

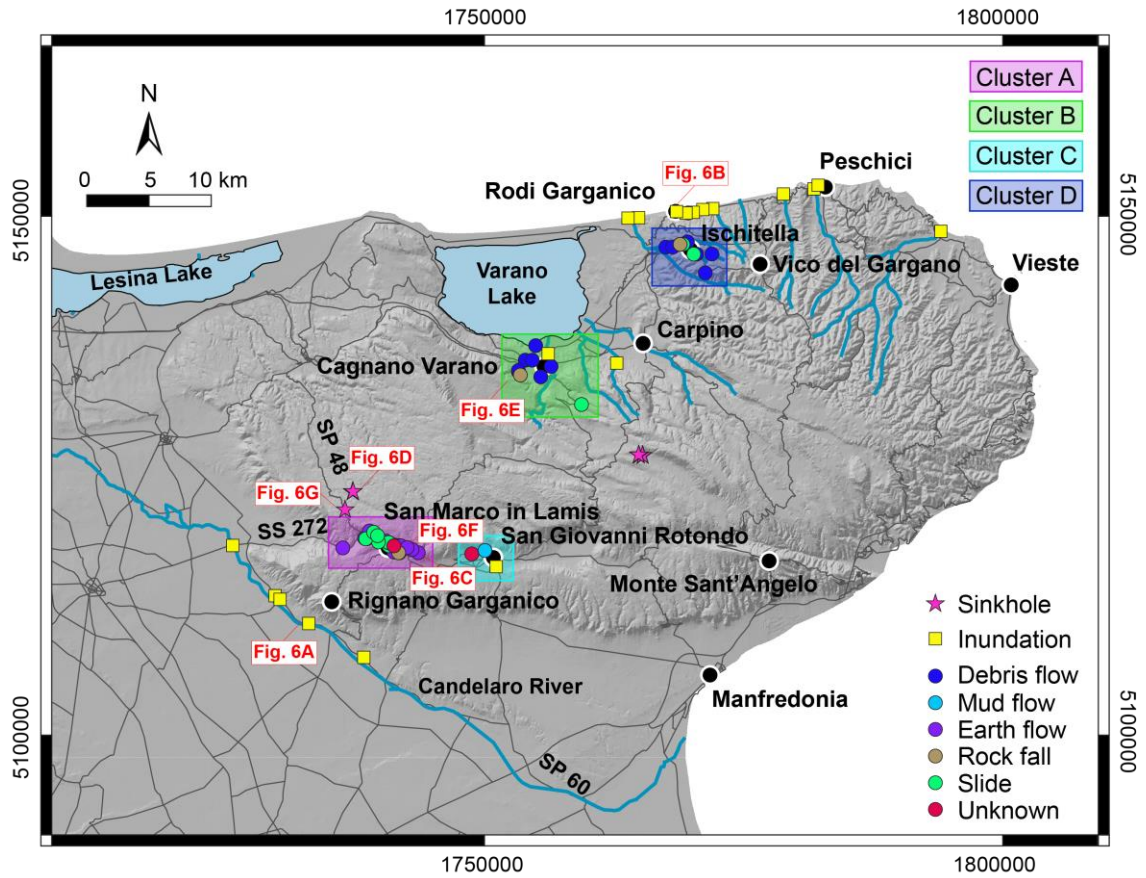
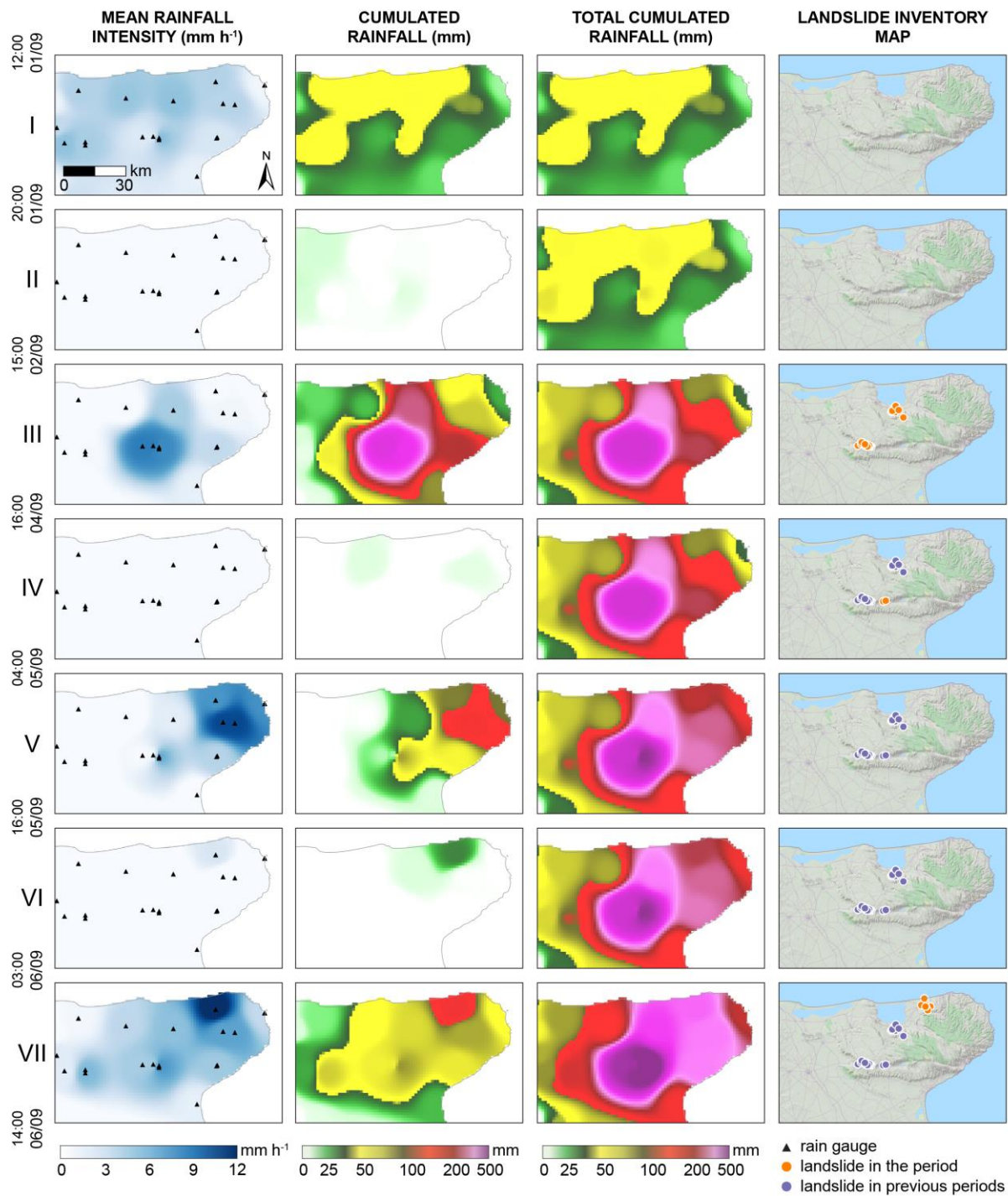


Figure 5: Map showing location of event landslides, floods, and sinkholes triggered by the 1-6 September 2014, intense rainfall event in the Gargano Promontory. WGS84/Pseudo Mercator (EPSG:3857).



Landslides, floods and sinkholes in a karst environment: the 1-6 September 2014 Gargano event, southern Italy

Maria Elena Martinotti¹, Luca Pisano^{2,6}, Ivan Marchesini¹, Mauro Rossi¹, Silvia Peruccacci¹, Maria Teresa Brunetti¹, Massimo Melillo¹, Giuseppe Amoroso³, Pierluigi Loiacono³, Carmela Vennari^{2,4}, Giovanna Vessia^{2,5}, Maria Trabace³, Mario Parise^{2,7}, Fausto Guzzetti¹

¹Consiglio Nazionale delle Ricerche, Istituto di Ricerca per la Protezione Idrogeologica, via Madonna Alta 126, I-06128 Perugia, Italy

²Consiglio Nazionale delle Ricerche, Istituto di Ricerca per la Protezione Idrogeologica, via Amendola 122, I-70126 Bari, Italy

³Regione Puglia, Servizio di Protezione Civile, Via delle Magnolie 6/8, I-70126 Modugno (Bari), Italy

⁴University of Naples “Federico II”, Naples, Italy

⁵University of Chieti-Pescara “Gabriele D’Annunzio”, Chieti, Italy

⁶University of Molise, Department of Biosciences and Territory, Contrada Fonte Lappone, Pesche (IS), Italy

⁷Present address: University “Aldo Moro”, Department of Earth and Environmental Sciences, Via Orabona 7, I-70126 Bari, Italy

Correspondence to: Maria Elena Martinotti (maria.elena.martinotti@irpi.cnr.it)

Abstract. In karst environments, heavy rainfall is known to cause multiple geo-hydrological hazards, including inundations, flash floods, landslides, and sinkholes. We studied a period of intense rainfall from 1 to 6 September 2014 in the Gargano Promontory, a karst landscape area in Puglia, southern Italy. In the period, a sequence of torrential rainfall events caused severe damage, and claimed two fatalities, ~~triggering different types of geo-hydrological hazards.~~ The amount and accuracy of the geographical and ~~the~~ temporal information varied for the different hazards. The temporal information was most accurate for the inundation caused by a major river, less accurate for flash floods caused by minor torrents, and even less accurate for landslides. For sinkholes, only generic information on the period of occurrence of the failures was available. Our analysis revealed that in the Promontory, rainfall-driven ~~geo-hydrological~~ hazards occurred in response to extreme meteorological conditions, and that the karst landscape responded to the torrential rainfall with a threshold behaviour. We exploited the rainfall and the landslide information to design the new Ensemble – Non Exceedance Probability, (E-NEP) algorithm for the quantitative evaluation of the possible occurrence of rainfall-induced landslides, and of related geo-hydrological hazards. The ensemble of the metrics produced by the E-NEP algorithm provided better diagnostics than the single metrics often used for landslide forecasting, including rainfall duration, cumulated rainfall and rainfall intensity. We expect that the E-NEP algorithm will be useful for landslide early warning in karst areas and in other similar environments. We acknowledge that further tests are needed to evaluate the algorithm in different meteorological, geological, and physiographical settings.

Formattato: Apice

Formattato: Apice

Formattato: Inglese (Stati Uniti)

1 Introduction

Torrential rainfall is known to cause inundations, flash floods, and different types of landslides, including debris flows, soil slides and rock falls. Less known is that intense rainfall can cause sinkholes, a subtle hazard in many karst environments (Parise and Gunn, 2007; [De Waele et al., 2011](#); Gutierrez et al., 2014; Parise et al., 2015). Here, we describe a series of rainfall events and their ground effects in the period from 1 to 6 September 2014 in the Gargano Promontory, a karst environment and a popular tourist area in Puglia ([Apulia](#)) region, southern Italy. In a 6-day period, a sequence of four heavy rainfall events, separated by periods with little or no rainfall, caused multiple geo-hydrological hazards in the Promontory, including landslides, flash floods, widespread inundation, and sinkholes. The death toll amounted to two fatalities, and a number of people were forced to leave their homes or businesses. Urban areas, tourist resorts, roads and rails were inundated and damaged ~~by landslides, flash floods and inundations~~, causing severe economic consequences. We ~~used the rainfall and the geo-hydrological hazards information to investigate~~[have investigated](#) the spatial-temporal relationships between the rainfall trigger and the geo-hydrological hazards, and ~~to design~~[we have designed](#) and ~~test~~[tested](#) an algorithm for improved early landslide ~~(and possibly other geo-hydrological hazards)~~ warning.

The paper is organized as follows. After a brief description of the study area (Section 2), in Section 3 we present the main meteorological and rainfall characteristic of the heavy rainfall period that has resulted in landslides, flash floods, inundations and sinkholes in the Gargano Promontory, and we investigate the spatial-temporal relationships between the intense rainfall and its ground effects. Next, in Section 4 we present a new method to forecast the possible occurrence of rainfall-induced landslides – and [possibly the other](#) associated geo-hydrological hazards – based on the continuous monitoring of local rainfall conditions. This is followed, in Section 5, by a discussion of the results obtained, including general considerations on the ~~geo-hydrological~~ effects of intense rainfall in karst environments, and their possible predictability using the new rainfall-based forecasting method. We conclude (Section 6) summarizing the lessons learnt.

2 Study area

The study area covers approximately 1,600 km², and encompasses the Gargano Promontory that extends for a few tens of kilometres into the Adriatic Sea, in the NE part of the Puglia ([Apulia](#)) region, southern Italy (Fig. 1). The Lesina and Varano coastal lakes separate the northern side of the promontory from the sea. Elevation in the area ranges from sea level to 1056 m a.s.l. with a mean value of about 400 m, and morphology is controlled by E-W and NW-SE-trending faults (Funicello et al., 1988; Brankman and Aydin, 2004). Due to the presence of a well-developed karst environment, surface hydrography is limited to a few, short, ephemeral drainages along the slopes that bound the elevated central plateau, and to the Candelaro River and minor drainages in the alluvial and coastal plains surrounding the Promontory. In the area ~~crop out~~ sedimentary rocks [crop out](#), chiefly carbonate platform limestone, limited marl, and residual “terra rossa” deposits (Bosellini et al., 1999). Soils ~~are thin or absent and~~, where present, ~~they~~ are chromic cambisols and luvisols. Yearly cumulated rainfall ranges between 400 and 1200 mm, and mean annual air temperature varies from 10 °C to 17 °C. Climate is Mediterranean to

Mediterranean sub-oceanic. July and August are dry, and most of the precipitation falls as rainfall from September to November (Polemio and Lonigro, 2011). The Promontory hosts the Gargano National Park and a number of towns and villages that collectively represent an important touristic area and a significant economic resource.

Although not particularly frequent or abundant compared to other areas in southern Italy, different geo-hydrological hazards ~~exist~~have been reported in the Gargano Promontory, ~~including landslides, floods, flash floods, and sinkholes~~. In recent historical times, destructive events occurred on 15 July 1972 (Bissanti, 1972) and 29 July 1976, when the city of Manfredonia, to the S of the Promontory (Fig. 1), suffered inundations, and on 10-12 September 1982, when the town of San Marco in Lamis was hit by torrential rain. Landslides were reported in 1931, 1935, 1950, 1952, 1962, 1963, 1972, 1996, and 1997, and floods in 1996, 1997, 1998, 2002, 2007 and 2011. The main landslide types are rock falls, topples, and small disrupted rock slides that originate primarily from steep rock slopes. Flash floods and coastal floods occur in response to intense rainfall, but are not very frequent in the historical record. The karst environment favours the formation of sinkholes i.e., karst forms also known as “dolines” (Ford and Williams, 2007), with a local density of up to 100 dolines per square kilometre (Castiglioni and Sauro, 2000; ~~Parise, 2008~~; Simone and Fiore, 2014). Sinkholes in the Promontory range in size from small to very small features extending a few tens of square ~~meters~~metres, to large and deep features including the “Dolina Pozzatina” with a depth of 100 m and a perimeter of about 1850 m, to large polje, including the Sant’Egedio polje, near San Giovanni Rotondo (Fig. 1).

~~3 Events description~~

3 Description of the events

3.1 Meteorological settings

The meteorological event that brought torrential rainfall in the Gargano area began on 1 September 2014, when a perturbed nucleus originating from northern Europe moved to lower latitudes and impacted the Italian peninsula, starting from the northern and eastern sectors. In the early afternoon of September 1st, the central and southern parts of the Italian peninsula were first affected (Fig. 2A). Between 2 and 3 September, the low pressure vortex moved towards the Ionian Sea, and then to the Balkans and the Hellenic peninsula. The meteorological situation determined an inflow of perturbed masses of air over most of the Adriatic regions (Fig. 2B,C). The counter-clockwise circulation affected most of central and southern Italy and persisted until September 6th. Residual perturbed meteorological conditions remained over the southern Italian regions, and in particular those facing the Ionian Sea, with isolated minor precipitations until the late morning of September 7th (Fig. 2D).

3.2 Rainfall events

The perturbed meteorological conditions over Italy resulted in torrential precipitation in the Gargano Promontory, with cumulated rainfall exceeding 500 mm in the 6-day period 1–6 September (Fig. 3). To study the intense rainfall period, we

used hourly rainfall records available for 39 rain gauges pertaining to the national network of rain gauges operated in the area by the Italian National Department of Civil Protection and the Puglia Regional Government. Inspection of the rainfall records and of the geographical distribution of the precipitation (Fig. 3) revealed that (i) heavy rainfall persisted for the entire observation period, hitting different parts of the promontory at different times, and that (ii) seven periods could be singled out, including four rainfall (“wet”) periods and three no-rainfall (“dry” or “nearly-dry”) periods (Fig. 3). The rainfall periods ranged from 8 to 49 hours, and were separated by dry ~~periods of fasting~~ between 11 and 19 hours (Table 1).

The first rainfall period (I) lasted 8 hours, from 12:00 to 20:00 UTC+2 on 1 September. In this “wet” period, around 50 mm of rain were measured by most of the rain gauges, for an average rainfall intensity of about 6.25 mm h⁻¹ (Fig. 3, Table 1). After a period of 19 hours without rainfall (II), the second rainfall period started (III) and was particularly severe in the SW part of the Promontory. About 400 mm were measured at the San Giovanni Rotondo and the San Marco in Lamis rain gauges, corresponding to an average intensity exceeding 8.2 mm h⁻¹, with peak values exceeding 40 mm h⁻¹. Relatively smaller amounts of rainfall were recorded at the Cagnano Varano (240 mm, most of which between 05:00 UTC+2 and 12:00 UTC+2 on 4 September) and the Monte Sant’Angelo (200 mm) rain gauges. The Vico del Gargano and the Bosco Umbra rain gauges, located in the NE part of the Promontory, recorded approximately 50 mm of rain in the period (Figs. 1, 3).

Following a dry period of 12 hours (IV), rainfall started again on 5 September (V), and this time was most abundant in the NE part of the Promontory. In ~~a 12-hour~~ this period, the Bosco Umbra and Vico del Gargano rain gauges measured slightly more and slightly less than 100 mm of rain, respectively, corresponding to a rainfall intensity exceeding 8.0 mm h⁻¹. On the opposite, southern side of the Promontory, the San Marco in Lamis rain gauge recorded only 10 mm of rainfall. In the same period (V), the San Giovanni Rotondo and Monte Sant’Angelo rain gauges, in the SE part of the Promontory, measured about 50 mm of rainfall. Period V was followed by an 11-hour nearly dry period (VI) which ended at 03:00 UTC+2 of 6 September 2014, when intense rainfall started again. The last rainfall period (VII) lasted until 14:00 UTC+2. In the 11-hour period all the considered rain gauges measured more than 50 mm of rain, with the maximum cumulated value recorded by the Vico del Gargano rain gauge, where 140 mm of rain were measured, corresponding to a rainfall intensity exceeding 12.0 mm h⁻¹.

A rank analysis of rainfall measurements for six rain gauges in the 7-year period from April 2009 to April 2016, highlighted the severity of the 6-day rainfall period (Fig. 4). Except for the Monte Sant’Angelo rain gauge, located in the southern part of the Promontory, the 1–6 September rainfall period exhibited the highest cumulated rainfall in the observation period. Adopting the classification proposed by Alpert et al. (2002), the rainfall was “torrential” in all the considered rain gauges, and for three of the rain gauges the only “torrential” event in the (short) record available ~~to us~~ (Fig. 4).

3.3 Landslides, floods and sinkholes

The sequence of intense rainfall events resulted in a number of ~~geo-hydrological hazards, including~~ floods, flash floods, landslides and sinkholes, and caused ~~one two~~ flood ~~fatality~~ fatalities at Peschici, ~~one landslide fatality and~~ at Carpino (<http://polaris.irpi.cnr.it/>), and severe socio-economic damage. (Fig. 5). Throughout the Promontory, the road and railway

networks were interrupted at several sites by inundations (Fig. 6A) and landslides, and many road underpasses were clogged by debris and sediments (Fig. 6B). In several towns and dwellings the inhabitants were evacuated from their homes, and a number of touristic resorts were inundated by water, mud, and debris.

The consequences of the storm of September 2014 were reported soon after their occurrence, and a first analysis was carried out immediately in its aftermath. The collection of information was obtained searching different sources: (i) field surveys, (ii) technical reports produced by geologists; and (iii) on-line national, regional, and local newspapers.

The collected information allowed reconstructing the geographical coordinates of each phenomenon, its occurrence date, and the type of hazard.

No geological and geomorphological details were available for the landslides, especially when the information was found in newspapers. A specific landslide catalogue was built and managed in a GIS environment. The catalogue lists the following items: (i) event identification code, (ii) source of information, (iii) landslide location (geographic coordinates, municipality, province), (iv) occurrence date and time (if available), (v) spatial and temporal accuracy, and (vi) landslide type.

As concerns floods, the main information regarded the interested areas, the reported damage, and the extent of the flooded territory. Information on sinkholes included the occurrence site obtained through field surveys (high geographical accuracy), and the occurrence time, which was mostly based upon interviews with local inhabitants (low to medium temporal accuracy).

Flooding was widespread in the Candelaro catchment that bounds to the SW the Gargano Promontory (Fig. 5). Two hydrological gauging stations located where the Candelaro River crosses State Road SS 272, W of the Gargano range, and where it crosses the Provincial Road SP 60 near to the outlet in the Manfredonia Gulf (Fig. 5), measured very high water levels. The upstream gauge along the SS 272 measured a first peak of 5.30 m at 02:00 UTC+2 on September 4, followed by a slightly higher peak of 5.50 m at 06:30 UTC+2. The water level remained very sustained until 09:00 UTC+2, and then it diminished (Fig. 3H). At the downstream gauging station located along SP 60, about 30 km downstream ~~from~~ from the upstream gauge, a peak of 3.77 m was measured at 16:00 UTC+2 on September 4, about 10 hours later than the peak measured by the upstream gauge. We justify the (significant) time difference in the peak discharge by the widespread inundation of the Candelaro River plain (Fig. 6A).

Inundations were also severe along the northern coastal area, between the Varano Lake and Vieste, and particularly between the towns of Cagnano Varano and Carpino, ~~where flooding caused one fatality~~ (Fig. 5). Near the Varano Lake, large agricultural areas were inundated. Along the northern coast of the Promontory, flash floods produced by small torrents occurred mostly on 5–6 September. In the morning of 5 September, the Macchio Torrent overflowed and inundated Vieste, and several touristic sites. Overflowing of minor torrents and ditches was reported in the early hours of 6 September in the towns of Peschici, Vico del Gargano, and Rodi Garganico.

The torrential rain caused a number of landslides, mostly shallow landslides (Fig. 6C, E, F). Overall, we collected information on 46 landslides, including ~~15 soil slips~~ 14 earth flows, 14 debris flows, 11 soil slides, ~~four~~ 4 rock falls, 1 mud flow and ~~two~~ 2 slope failures of undetermined type. This is a subset of all the event landslides in the Gargano Promontory.

Based on the type of failures, we hypothesize that all the landslides were from rapid to extremely rapid. Most of the mapped landslides were in the municipalities of San Marco in Lamis, Ischitella, and Cagnano Varano. Landslides were also reported near San Giovanni Rotondo, Rignano Garganico, and Rodi Garganico (Fig. 5).

We searched information on the time, or period of occurrence of the landslides. However, for most of the landslides the time or period of occurrence remains unknown, or suffers from very large uncertainty. For only nine landslides we obtained reasonably accurate information on the period of occurrence of the slope failures. On 3–4 September, four landslides occurred near San Marco in Lamis, along SS 272, most probably in the 3-hour period between 23:00 and 02:00 UTC+2. We consider these landslides representative of a larger cluster ~~of landslides~~ in the same area (cluster A). On 4 September, a landslide occurred between 05:00 and 16:00 UTC+2 near Cagnano Varano (cluster B). In the same day, a single landslide occurred in the municipality of San Giovanni Rotondo at an undetermined time between 14:00 and 21:00 UTC+2 (cluster C). Lastly, three landslides occurred in the night between 5–6 September, and most probably between 23:00 and 05:00 UTC+2, in the municipalities of Ischitella and Rodi Garganico (cluster D). We attribute the scarce temporal information and the poor accuracy of the information on the time of occurrence of the failures to the difficulty to reach some of the places where the landslides occurred, and to the fact that many landslides occurred in the evening or during the night, and were reported only several hours after the event.

The torrential rainfall also caused sinkholes. We mapped ten, small sinkholes near the villages of San Marco in Lamis and Monte Sant'Angelo (Fig. 5). Based on their morphology and shape, the sinkholes were classified as collapse or cover-collapse sinkholes (Gutiérrez et al., 2008, 2014). At San Marco in Lamis, four sinkholes affected the lower part of a pre-existing karst depression. The deepest sinkhole was about 6 m deep, 5 m wide, and exposed limestone and residual “terra rossa” deposits that represent the upper part of the epikarst (Williams, 2008) (Fig. 6D). Other sinkholes were less developed, and were detected and mapped locally only based upon morphological considerations. Due to the remote areas where the sinkholes occurred, their limited sizes (Fig. 6G), and the difficulty to detect them, no accurate information is available on the time or period of occurrence of the sinkholes.

3.4 Spatial and temporal distributions of rainfall and geo-hydrological hazards

To help investigating the effect of the changing spatial and temporal distribution of the rainfall on the location of the ~~event geo-hydrological hazards (landslides, floods, and sinkholes)~~, we prepared Fig. 7 that portrays, for each period in the sequence of rainfall events (Section 3.2), maps showing the spatial distributions of the mean rainfall intensity (in mm h⁻¹), the cumulated rainfall for the single period and from the beginning of the event (in mm), and the location of the landslides occurred in each period, and in previous periods.

Inspection of Fig. 7 reveals that the total cumulated rainfall, exceeding 100 mm in large parts of the Promontory, was the result of separate rainfall events that hit different parts of the Promontory at different times. The first rainy period (I) was more widespread but characterized by an overall moderate cumulated rainfall not exceeding 50 mm, and rainfall intensity not exceeding 6.2 mm h⁻¹. No ~~geo-hydrological hazard (landslide/landslides or flood) was~~ floods were reported during the first

rainy period. The second (III) and the third (V) rainy periods were more localised, the second in the central part of the Promontory (San Marco in Lamis and San Giovanni Rotondo), and the third in the NE sector of the Promontory (Ischitella, Vico del Gargano and Vieste), and were both characterized by high values of ~~the~~-cumulated rainfall (exceeding 400 mm in the second and 130 mm in the third period), and of ~~the~~-rainfall intensity (that ~~exceed~~~~exceeded~~ 8.5 mm h⁻¹ for the second period and 10.5 mm h⁻¹ for the third period, respectively). Landslides were reported in the central (cluster A) and in the northern (cluster B) parts of the Promontory during the second rainfall period (III). In the same period the upstream hydrological gauging station along the Candelaro River measured high water flows exceeding 5.0 m (Fig. 2), about two hours after the maximum hourly rainfall measured at the San Marco in Lamis rain gauge, at 24:00 UTC+2 on September 3. The landslides occurred in areas where the total event cumulated rainfall exceeded 400 mm (for cluster A) and 200 mm (for cluster B).

In the central part of the Promontory, landslides were also reported (cluster C) during the second dry period (IV). Given the poor temporal accuracy of these landslides (i.e., between 14:00 and 21:00 UTC+2 on 4 September), we cannot exclude that the failures occurred during the last few hours of the previous rainfall period (III). The hypothesis is supported by the fact that the San Giovanni Rotondo rain-gauge measured rainfall until 15:00 UTC+2 on 4 September (Fig. 2). The last rainfall period (VII) was again characterized by widespread rainfall throughout most of the Promontory with a distinct peak in the NE sector exceeding 130 mm. Where rainfall intensity was particularly intense (> 11 mm h⁻¹), in the NE part of the Promontory, between Rodi Garganico and Peschici, landslides were also reported (cluster D).

4 Geo-hydrological hazards forecasting algorithm

We used the rainfall records and ~~the geo-hydrological~~ hazard information available for the Gargano event to design and test an algorithm for the possible operational forecasting of rainfall-induced landslides and other geo-hydrological hazards, including flash floods and sinkholes

4.1 The E-NEP algorithm

The Ensemble – Non Exceedance Probability, (E-NEP) algorithm exploits a standard rainfall ~~records~~~~record~~ obtained by a rain gauge to trace in time the probability of possible landslide occurrence, and of related geo-hydrological hazards. For the purpose, for each time t_i , E-NEP calculates the event rainfall duration D , and the corresponding event cumulated rainfall E , for increasing antecedent periods before t_i , from t_i to $t_i + T$, in d time steps, with T the maximum length of the considered antecedent rainfall period and d ~~is~~ the time step used to increment the duration of the antecedent rainfall period. For each rainfall-duration-event-cumulated-rainfall pair the corresponding non-exceedance probability (NEP) $p(D,E)$ is obtained using the probabilistic approach proposed by Brunetti et al. (2010), and modified by Peruccacci et al. (2012), for the definition of empirical rainfall thresholds for possible landslide occurrence (Guzzetti et al., 2007). The set of the NEP values (i.e., $\{NEP\}=\{p(D,E)\}$) is then used to determine an ensemble of metrics, including the maximum value of the NEP

(NEP_{max}), the 10th, 25th, 50th, 75th, and 90th percentiles (NEP_{10} , NEP_{25} , NEP_{50} , NEP_{75} , NEP_{90}), and the rainfall duration (D_{NEPmax}) associated to NEP_{max} , that collectively are exploited for landslide ~~(and other geo-hydrological hazards)~~ forecasting. The process is repeated at regular time intervals (z , where $t_{i+1} = t_i + z$), allowing to follow the temporal evolution of the probability of possible occurrence of rainfall-induced landslides, and of related geo-hydrological hazards.

Figure 8 portrays the logical schema for the E-NEP algorithm, which consists of two nested loops. First, the maximum length of the considered rainfall period, T (in hours), the time step to increment the duration of the considered antecedent rainfall, d (in hours), and the time interval before the next set of (D,E) pairs is computed, z (in hours), are set to user-defined values. We stress that the three time (duration) variables are independent, with the only constrain that $d \leq T$. Next, the external loop (cyan in Fig. 8) starts, the rainfall duration D is set to d , and $\{NEP\}$ is set to null (an empty set). Next, the internal loop (orange in Fig. 8) starts, and for the given rainfall duration D , the corresponding cumulated rainfall E is determined, and the probability of landslide occurrence $p(D,E)$ is computed adopting the method proposed by Brunetti et al. (2010) and Peruccacci et al (2012) and stored in $\{NEP\}$. The rainfall duration D is then incremented ($D = D + d$) and tested to verify if it is larger than T . If $D \leq T$, the internal loop is repeated using the current value of D and the corresponding E ; ~~elseotherwise~~ ($D > T$) the loop ends, and the ensemble of metrics of $\{NEP\}$ (NEP_{10} , NEP_{25} , NEP_{50} , NEP_{75} , NEP_{90} , NEP_{max}) and the value of D_{NEPmax} are calculated. The external loop is then repeated after the user-defined time interval of z hours.

Figure 9 exemplifies the application of the E-NEP algorithm to a specific rainfall record, at a given time t_i (i.e. the application of the orange internal loop of Fig. 8), for an antecedent period $T = 96$ hours, with $d = 1$ hour. E-NEP calculates the cumulated event rainfall E for increasing durations D , from 1 (t_i-1) to 96 h (t_i-96), every hour (time step $d = 1$). The individual (D,E) pairs are plotted as grey dots in Fig. 9D. For each pair, the corresponding NEP, the non-exceedance probability of possible landslide occurrence, was calculated ~~using the approach proposed by Brunetti et al. (2010) and modified by Peruccacci et al. (2012)~~, and are shown by the blue squares in Fig. 9D. To further clarify the operations performed by the E-NEP algorithm, the bar charts in Fig. 9A,B,C show, for the same time t_i , three antecedent rainfall periods corresponding to durations of $D = 6$ hours (red bars), $D = 16$ hours (green bars), and $D = 44$ hours (yellow bars). The corresponding cumulated event rainfall (red, green, yellow circles) and the associated non-exceedance probability values (red, green, yellow squares), are shown in Fig. 9D. Lastly, the box plot to the right of Fig. 9D portrays (i) the ensemble of metrics of $\{NEP\}$: NEP_{10} , NEP_{25} , NEP_{50} , NEP_{75} , and NEP_{90} , and the maximum value of the non-exceedance probability, NEP_{max} . In Fig. 9D, the green square identifies NEP_{max} i.e., the non-exceedance probability corresponding to the most critical rainfall condition for possible landslide occurrence in the considered rainfall period. The corresponding duration ($D = 16$ hours) represents the D_{NEPmax} value.

4.2 Application and discussion of the E-NEP algorithm

We applied the E-NEP algorithm to the 13-day period between 31 August and 12 September that encompasses the entire series of rainfall events that hit the Gargano Promontory ~~(Fig. 2)~~. We applied the algorithm to synthetic hourly rainfall records reconstructed for the locations of the four spatial-temporal landslide clusters identified in the study area (Fig. 7). To

reconstruct the synthetic rainfall records, we interpolated the hourly rainfall measurements obtained by 39 rain gauges in the Gargano Promontory and the surrounding regions (Fig. 3) at the landslide locations. For the purpose, we used a standard inverse weighted distance (IDW) spatial interpolator (Shepard, 1968) to obtain hourly rainfall values on a regular $500 \text{ m} \times 500 \text{ m}$ grid. Next, the hourly rainfall grids were sampled at the grid cells selected to represent the four landslide clusters A, B, C, and D, and the synthetic hourly rainfall time series were reconstructed for each landslide cluster.

For our analysis, and for each landslide cluster, t_i ranged from 31 August, 00:00 UTC+2 to 11 September, 24:00 UTC+2, in regular 1-hour time intervals (Δt), corresponding to a total of 288 time intervals. For each t_i , E-NEP computed the NEP_{10} , NEP_{25} , NEP_{50} , NEP_{75} , and NEP_{90} percentiles, the NEP_{\max} , and the corresponding D_{NEPmax} .

Results of the analysis are shown in Fig. 10, for the four landslide clusters, where the single plots show, from top to bottom, the temporal evolution of (i) the measured and the cumulated rainfall, (ii) the NEP_{10} , NEP_{25} , NEP_{50} , NEP_{75} , NEP_{90} percentiles (shown in ranges, by two different shades of blue and by the thick blue line) and NEP_{\max} (purple line), and (iii) the corresponding D_{NEPmax} (green line). Figure 10 also shows (i) with grey areas, the possible period of occurrence of the landslides, a measure of the uncertainty in the failure occurrence time, and (ii) with a vertical blue line the time of the high peak measured by the Candelaro gauge along SS 272 (Fig. 10A, Fig. 3).

For cluster A, encompassing landslides occurred along State Road SS 272 and SP 48 near San Marco in Lamis, at 12:00 UTC+2 on 1 September a short rainfall burst hit the landslide area and stopped shortly afterward (Fig. 10 A1, I in Fig. 3). In this period, the NEP_{\max} increased rapidly to 0.15 and decreased immediately afterwards due to lack of rainfall (Fig. 10 A2). Next, following a dry period of 19 hours (II in Fig. 3), the main rainfall event started at 16:00 UTC+2 on 2 September (Fig. 10 A1, III in Fig. 3). As a result of this second, intense rainfall event all the NEP percentiles increased abruptly and significantly (Fig. 10 A2), with NEP_{\max} exceeding 0.99 at 23:00 UTC+2 on 3 September. The landslides of cluster A followed shortly afterward.

Following the landslide occurrence, all the NEP values remained high for 12 hours. When the rainfall stopped, at 14:00 UTC+2 on September 4, the NEP percentiles decreased, beginning with NEP_{10} and continuing with the other (larger) percentiles. NEP_{\max} decreased below 0.25 at 21:00 UTC+2 on September 8. Of interest is the analysis of the temporal trend of D_{NEPmax} (Fig. 10 A3), the rainfall duration corresponding to largest NEP_{\max} . D_{NEPmax} (i) increased in response to the first rainfall period (I in Fig. 3), (ii) kept rising during the first dry period (II in Fig. 3), (iii) dropped to zero during the second (main) rainfall period, and precisely when the rainfall intensity reached a maximum value of 7 mm h^{-1} (III in Fig. 3), (iv) increased steadily for 94 hours, and (iv) remained high until almost the end of the considered period.

We observe that landslides in cluster A occurred when the NEP_{\max} was close to its maximum possible value ($\text{NEP}_{\max} = 1$), a very critical condition for possible landslide initiation (Brunetti et al., 2010; Peruccacci et al., 2012). Just before the landslide occurrence (i) NEP_{50} was close to NEP_{\max} i.e., the median value was close to the maximum value of the non-exceedance probability, (ii) the inter-percentile ranges NEP_{10} - NEP_{90} and NEP_{25} - NEP_{75} were narrow, and (iii) there was a sudden increase of all NEP values, and particularly of the lower percentiles (i.e., NEP_{10} , NEP_{25}) (Fig. 10 A2). We further observe that landslides in this cluster occurred after D_{NEPmax} had begun to rise following a sudden drop (Fig. 10 A3).

Inspection of the other plots in Figure 10 reveals significant similarities in the temporal evolution of the metrics computed by the E-NEP algorithm for the other three landslide clusters, when compared to the same metrics computed for cluster A. Specifically, (i) all landslides occurred when the NEP_{max} was close to its maximum value, and immediately before landslide occurrence (ii) NEP_{50} was close to NEP_{max} , (iii) the range NEP_{25} - NEP_{75} was narrow, (iv) there was a sudden increase of all
 5 NEP percentiles (Fig. 10 A2), except NEP_{10} (Fig. 10 C2), and (v) the landslides occurred after the D_{NEPmax} had started to
 | raise following a previous sudden drop. We consider these observations diagnostic of the rainfall conditions that have resulted in landslides (and other geo-hydrological hazards) in the Gargano Promontory in the period 1-6 September 2014

5 Discussion

The analysis of the rainfall records and the geo-hydrological hazard information available for the Gargano Promontory
 10 rainfall events between 1 and 6 September 2014 (Section 3), and their application to test the Ensemble – Non Exceedance
 | Probability, (E-NEP) algorithm (Section 4), allows for general and specific considerations.

We first observe that landslides in the four examined clusters occurred for different levels of the cumulated event rainfall, E
 (Fig. 7, Table 1). We also observe that rainfall intensity was very high in the period of the failures, or immediately before it,
 but also that periods of high rainfall intensity were not associated to (known) landslides (see e.g., clusters C and D, Fig. 10
 15 B, C). We conclude that, in the case of the investigated rainfall events, single metrics like the event cumulated rainfall E , and
 | the rainfall intensity I , on their own, were not singularly diagnostic of the rainfall conditions that have resulted in the known
 landslides.

As discussed in Section 4.2, a number of potentially diagnostic observations drawn from the ensemble of metrics produced
 by the E-NEP algorithm were common to all the examined landslide clusters, including the facts that (i) all the landslides
 20 occurred when NEP_{max} was close to its maximum possible value, and that (ii) shortly before landslide occurrence there was a
 sudden increase of all NEP percentiles (except NEP_{10} locally, Fig. 10 C2), NEP_{50} was close to NEP_{max} , and the interquartile
 range NEP_{25} - NEP_{75} was narrow. Following landslides occurrence, NEP_{max} remained typically sustained for long periods, but
 the NEP percentiles dropped more or less rapidly, even where additional rainfall fell in the area. We observe that no
 information on landslide occurrence was reported when NEP_{50} was low, or very low. A further observation is that landslides
 25 occurred shortly after the D_{NEPmax} had started to rise, following a previous drop. A sudden drop of D_{NEPmax} is always related
 to an increase in NEP_{max} that is determined by an increase in the rainfall intensity. However, a small increase in rainfall
 intensity may not be sufficient to cause D_{NEPmax} to drop. We argue that visual analysis of the temporal evolution of D_{NEPmax}
 can be exploited to provide indications of the rapid change of the possible critical rainfall conditions that may lead to slope
 failures shortly afterwards.

30 We conclude that the ensemble of the metrics produced by the E-NEP algorithm provides better diagnostic results than the
 single metrics often used for landslide forecasting, including rainfall duration, cumulated event rainfall, and rainfall intensity

(Guzzetti et al., 2007). This is visually portrayed in Fig. 10, where the temporal trend of the cumulated rainfall is less diagnostic than the corresponding trends of the NEP_{max} or the D_{NEPmax} in forecasting the periods of landslide occurrence.

We maintain that the E-NEP algorithm is potentially useful for near-real time landslide warning, but we acknowledge that more investigations are required to test the algorithm in different meteorological, geological, and physiographical settings.

The sequences of closely spaced rainfall events in the Gargano Promontory covered a long period (6 days), and this made it particularly well suited for the design and testing of the E-NEP algorithm. The sequence of rainfall events was also the result of a relatively simple meteorological setting. More tests are needed to evaluate the performance of the E-NEP algorithm for shorter and longer rainfall periods, and in different and more complex meteorological conditions.

We stress that the E-NEP algorithm was designed to attempt to forecast rainfall conditions for the possible occurrence of landslides that react rapidly to a rainfall input. These are typically shallow landslides, including soil slips/slides and debris flows, and rock falls, that involve the soil or the upper and more weathered parts of the bedrock. E-NEP was not designed to attempt to evaluate other landslides that react slowly, or very slowly to a rainfall input, including e.g., deep-seated landslides, shallow landslides in stiff clay. Also, E-NEP was not designed to attempt to predict landslides caused by meteorological triggers other than intense rainfall, including e.g., rain-on-snow events or rapid snow-melt events (Cardinali et al., 2000).

However, we expect that E-NEP can be adapted to forecast shallow landslides caused by intense rainfall even in specific, local conditions (e.g., in areas burnt by wildfires, Cannon et al., 2003–2010; De Graff et al., 2013; Moody et al., 2013), provided that sufficient information is available to apply the method proposed by Brunetti et al. (2010) and Peruccacci et al. (2012), that lays at the base of E-NEP.

Analysis of the rainfall conditions that have resulted in landslides, flash floods, inundation and sinkholes in the investigated period in the Gargano Promontory revealed that the geo-hydrological hazards occurred in response to extreme rainfall conditions. This is confirmed by the facts that (i) rainfall was torrential (Alpert et al., 2002) (Fig. 4), and (ii) the geo-hazards – and particularly the landslides – occurred when all the NEP percentiles were close to the possible maximum value of the non-exceedance probability of possible landslide occurrence (Brunetti et al., 2010; Peruccacci et al., 2012) (Fig. 10), which represent very severe rainfall conditions. The available record of historical landslides and floods indicates that these geo-hydrological hazards are not very frequent or abundant, compared to other areas in southern Italy. We conclude that in the Gargano Promontory meteorologically-driven geo-hydrological hazards occur in response to extreme (i.e., rare) meteorological conditions. For rainfall-driven geo-hazards, the landscape in the Gargano Promontory exhibits a threshold behaviour that can be modelled conceptually by a Heaviside step function (Abramowitz and Stegun, 1972). For light to heavy rainfall events (Alpert et al., 2002) geo-hydrological hazards do not occur or are rare and minor, whereas for heavy-torrential to torrential rainfall events geo-hydrological hazards they are abundant and particularly disruptive. We attribute the threshold-based behaviour to the karst environment that dominates the landscape in the Promontory.

In the karst environment of the Promontory, rainfall infiltration is efficient even for high intensity rainfall rates, and soils are inexistent or thin, except locally in the sinkholes. This limits the occurrence of landslides, except for very intense (i.e., “extreme”) rainfall events. High infiltration to shallow depth. On the other hand, arrival of great amount of rainfall in a setting

typically characterized by water infiltrating within the rock mass through the network of conduits and joints, highly facilitates the formation of flash floods, particularly in small catchments, as has been frequently ~~occurring~~ registered also in other parts of ApuliaPuglia (Parise, 2003; Mossa, 2007). Further, karst aquifers have very poor retention capacity. These, and other characteristics as well, allow to identify the flash floods as one of the main hazards in karst terrains (Fleury et al., 2013; Gutierrez et al., 2014; Parise et al., 2015).

In the sinkholes, the presence of residual soils varies largely, depending on the location, size and depth of the sinkholes. Where the infiltration is reduced, partial or total inundation of the sinkholes occurs. These local inundations are difficult to detect because they last only for short periods, and because they often go unnoticed in the rural, scarcely populated landscape of the Promontory.

The torrential rainfall has triggered sinkholes in the Gargano Promontory (Fig. 6D,G). Accurate information on the time or period of occurrence of the sinkholes is not available, and even the simple detection of the sinkholes was hampered by their small size and the remote location of the events. However, sinkholes represent a subtle and serious hazard in the Promontory, and in other karst areas (Parise and Gunn, 2007; Gutierrez et al., 2014; Parise, ~~2015~~; ~~Parise~~ et al., 2015), and establishing methods and procedures for their possible forecasting is of primary interest in karst environments. Based on the analysis of the 1-6 September 2014 Gargano rainfall period, we confirm that in the Promontory, and in similar karst areas, torrential rainfall can trigger sinkholes, and we hypothesise that approaches based on the near-real-time monitoring of rainfall (e.g., the E-NEP algorithm) can be used to forecast the possible occurrence of rainfall-induced sinkholes. We acknowledge that an analysis of a larger number of ~~rainfall induced sinkhole~~ events is required to test this hypothesis.

6 Conclusions

We studied a period of torrential rain between 1 and 6 September 2014 in the Gargano Promontory, Puglia, southern Italy, that caused a variety of geo-hydrological hazards, including landslides, flash floods, inundations, and sinkholes. We obtained information on the location of the events through field surveys and the analysis of anecdotal information obtained from various sources. The temporal information varied among the hazards. For inundations the time or period of occurrence were known from gauge data (Fig. 3H), and for flash floods from anecdotal sources (Fig. 6A, B). For landslides, the period of occurrence was inferred from anecdotal sources for only nine (out of 46) slope failures, and with significant uncertainty. No information on the time or period of occurrence was available for the sinkholes. We conclude that the ability to obtain accurate temporal information for the different hazards, an important information to establish and validate early warning systems, depended on the extent and the location of the different hazards. The temporal information was most accurate for flooding along the Candelaro River (Fig. 3H), followed by flash floods and landslides (Fig. 3), and was not available for the sinkholes.

We used the rainfall and the landslide information available to us to design and test the new Ensemble – Non Exceedance Probability, E-NEP algorithm for the quantitative evaluation of the probability of possible occurrence of rainfall-induced

landslides, and of related geo-hydrological hazards (e.g., flash floods, sinkholes). For the investigated rainfall events, the ensemble of the metrics produced by the E-NEP algorithm provided better diagnostics than the single metrics often used for landslide forecasting, including rainfall duration, cumulated rainfall and rainfall intensity (Guzzetti et al., 2007; Brunetti et al., 2010; Peruccacci et al., 2012). We maintain that the E-NEP algorithm is potentially useful for landslide early warning, but we acknowledge that more work is needed to test the algorithm in different meteorological, geological, and physiographical settings.

Our analysis revealed that in the Gargano Promontory meteorologically-driven ~~geo-hydrological~~ hazards occur in response to extreme (i.e., rare) meteorological conditions, and the karst landscape responds to torrential rainfall with a threshold behaviour. For light to heavy rainfall events (Alpert et al., 2002) ~~geo-hydrological hazards~~ landslides, floods, and sinkholes do not occur or are rare and minor, whereas for heavy-torrential to torrential rainfall events ~~geo-hydrological hazards~~ they are abundant and particularly disruptive, as ~~it was~~ for the case for the 1-6 September 2014 event. We maintain that this information is useful for landslide (and other geo-hydrological hazards) early warning systems.

7 Acknowledgements

Work performed in the framework of projects supported by the Italian National Department for Civil Protection (DPC), and the Puglia (Apulia) Regional Government (PRG). Maria Elena Martinotti and Massimo Melillo were supported by two grants of DPC. Luca Pisano was supported by a grant of PRG.

References

- Abramowitz, M., Stegun, I.A. (Eds): Handbook of Mathematical Functions with Formulas, Graphs, and Mathematical Tables, 9th printing, New York, 1972.
- Alpert, P., Ben-Gai, T., Baharan, A., Benjamini, Y., Yekutieli, D., Colacino, M., Diodato, L., Ramis, C., Homar, V., Romero, R., Michaelides, S., Manes, A.: The paradoxical increase of Mediterranean extreme daily rainfall in spite of decrease in total values, *Geophys. Res. Lett.*, 29(11):31-1–31-4, doi:10.1029/2001GL013554, 2002.
- Bissanti, A.A.: L'alluvione del luglio 1972 a Manfredonia, *Mem Ist Geogr Fac Econ Comm Università Bari*, 5-73, 1972.
- Bosellini, A., Morsilli, M., Neri, C.: Long-term event stratigraphy of the Apulia platform margin (Upper Jurassic to Eocene; Gargano, southern Italy), *J. Sediment. Res.*, 69,1241-1252, 1999.
- Brankman, C.M., Aydin, A.: Uplift and contractional deformation along a segmented strike-slip fault system: the Gargano Promontory, southern Italy, *J Struct. Geol.*, 26, 807-824, 2004.
- Brunetti, M.T., Peruccacci, S., Rossi, M., Luciani, S., Valigi, D., Guzzetti, F.: Rainfall thresholds for the possible occurrence of landslides in Italy, *Nat. Hazard Earth Syst. Sci.*, 10, 447-458, 2010.

- Cannon, S.H., Gartner, J.E., ~~Parrett, C., Parise, M.: Wildfire related debris flow generation through episodic progressive sediment bulking processes, western USA, in: Proceedings of 3rd international conference on Debris flow hazards mitigation mechanics, prediction, and assessment, Davos, Switzerland, 2003.~~
- ~~Cannon, S.H., Gartner, J.E.,~~Rupert, M.G., Michael, J.A., Rea, A.H., Parrett, C.: Predicting the probability and volume of
5 post wildfire debris flows in the intermountain western United States, Geol. Soc. Am. Bull., 122(1/2), 127-144, 2010.
- ~~Cardinali, M., Ardizzone, F., Galli, M., Guzzetti, F., Reichenbach, P.: Landslides triggered by rapid snow melting: the December 1996 January 1997 event in Central Italy, in: Proceedings of the EGS Plinius Conference, Cosenza, Italy, 439-448, 2000.~~
- Castiglioni, B., Sauro, U.: Large collapse dolines in Puglia (southern Italy): the cases of “Dolina Pozzatina” in the Gargano
10 plateau and of “puli” in the Murge, Acta Carsologica, 29(2), 83-93, 2000.
- ~~De Waele, J., Gutiérrez, F., Parise, M., Plan, L.: Geomorphology and natural hazards in karst areas: A review. Geomorphology, 134, 1-8, 2011.~~
- De Graff, J.V., Cannon, S.H., Parise, M.: Limiting the immediate and subsequent hazards associated with wildfires, in: Landslide science and practice, volume 4: Global Environmental Change, Springer, 199-209, 2013.
- ~~15 Fleury, P., Maréchal, J.C., Ladouche, B.: Karst flash-flood forecasting in the city of Nîmes (southern France), Engineering Geology, Volume 164, 17 September 2013, Pages 26-35, <http://dx.doi.org/10.1016/j.enggeo.2013.06.007>.~~
- Ford, D.C., Williams, P.: Karst Hydrogeology and Geomorphology, Wiley, Chichester, 562 pp, 2007.
- Funiciello, R., Montone, P., Salvini, F., Tozzi, M.: Caratteri strutturali del promontorio del Gargano, Mem. Soc. Geol. It., 41, 1235-1243, 1988.
- ~~20 Gutiérrez, F., Guerrero, J., Lucha, P.: A genetic classification of sinkholes illustrated from evaporite paleokarst exposures in Spain, Environ. Geol., 53, 993–1006, 2008.~~
- ~~Gutiérrez, F., Parise, M., De Waele, J., Jourde, H.: A review on natural and human-induced geohazards and impacts in karst, Earth-Sci. Rev., 138, 61-88, 2014.~~
- ~~Guzzetti, F., Peruccacci, S., Rossi, M., Stark, C.P.: Rainfall thresholds for the initiation of landslides in central and southern
25 Europe, Meteo Atmosph. Physics, 98(3), 239–267, doi:10.1007/s00703-007-0262-7, 2007.~~
- ~~Moody, J.A., Shakesby, R.A., Robichaud, P.R., Cannon, S.H., Martin, D.A.: Current research issues related to post-wildfire runoff and erosion processes, Earth-Sci. Rev., 122(C), 10-37, doi:10.1016/j.earscirev.2013.03.004, 2013.~~
- ~~Mossa, M.: The floods in Bari: what history should have taught, J. Hydraul. Res., 45, 579-594, 2007.~~
- ~~Parise, M.: Flood history in the karst environment of Castellana-Grotte (Apulia, southern Italy), Nat. Hazards Earth Syst.
30 Sci., 3(6), 593-604, 2003.~~
- ~~Parise, M.: Elementi di geomorfologia carsica della Puglia, in: Proceedings of the 45th Course CNSS SSI on “Karst Geomorphology”, Grottaglie, Italy, 2-3 February 2008, 93-118, 2008.~~
- ~~Parise, M.: A procedure for evaluating the susceptibility to natural and anthropogenic sinkholes, Georisk 9(4), 272-285, doi:10.1080/17499518.2015.1045002, 2015.~~

- ~~Parise, M.~~, Gunn, J. (Eds): Natural and anthropogenic hazards in karst areas: Recognition, Analysis and Mitigation, Geological Society, Special Publication 279, London, 2007.
- Parise, M., Ravbar, N., Živanovic, V., Mikszewski, A., Kresic, N., Mádl-~~Szohy~~Szonyi, J., Kukuric, N.: Hazards in Karst and Managing Water Resources Quality, in: Stevanovic, Z. (ed), Karst Aquifers – Characterization and Engineering. Professional Practice in Earth Sciences, Springer, 601-687, doi:10.1007/978-3-319-12850-4_17, 2015.
- Polemio, M., Lonigro, T.: Variabilità climatica e ricorrenza delle calamità idrogeologiche in Puglia, in Polemio, M. (ed), Le modificazioni climatiche e i rischi naturali, CNR IRPI, Bari, 13-16, 2011.
- Peruccacci, S., Brunetti, M.T., Luciani, S., Vennari, C., Guzzetti, F.: Lithological and seasonal control on rainfall thresholds for the possible initiation of landslides in central Italy, Geomorphology, 139-140, 79-90, 2012.
- 10 Shepard, D.: A two-dimensional interpolation function for irregularly-spaced data, in: Proceedings of the 1968 23rd ACM national conference, ACM, New York, 517-524, 1968.
- Simone, O., Fiore, A.: Five Large Collapse Dolines in Apulia (Southern Italy) - the Dolina Pozzatina and the Murgian Puli, Geoheritage, 6(4), 291-303, 2014.
- Williams, P.W.: The role of the epikarst in karst and cave hydrogeology: a review, Int. J.Speleol., 37, 1–10, 2008.

Table 1: Characteristics of seven periods in the sequence of rainfall events that hit the Gargano Promontory between 1 and 6 September 2014. Start and End time is given in UTC+2. Rain/Dry lists rainfall, “wet” (R), and no-rainfall, “dry” or “nearly-dry” (D), periods. Rainfall gives the range (minimum-maximum) of the cumulated rainfall in each period. Intensity is the average intensity in the period for the maximum cumulated rainfall. See also Fig. 3 and Fig. 7.

Period	Start day, hour	End day, hour	Length Hour	Rain/Dry	Rainfall mm	Intensity mm h ⁻¹
I	1 Sep, 12:00	1 Sep, 20:00	8	R	20-50	6.25
II	1 Sep, 20:00	2 Sep, 15:00	19	D	0-6	0.31
III	2 Sep, 15:00	4 Sep, 16:00	49	R	50-440	8.97
IV	4 Sep, 16:00	5 Sep, 04:00	12	D	0-6	0.50
V	5 Sep, 04:00	5 Sep, 16:00	12	R	10-130	10.83
VI	5 Sep, 16:00	6 Sep, 03:00	11	D	0-20	1.82
VII	6 Sep, 03:00	6 Sep, 14:00	11	R	50-140	12.73

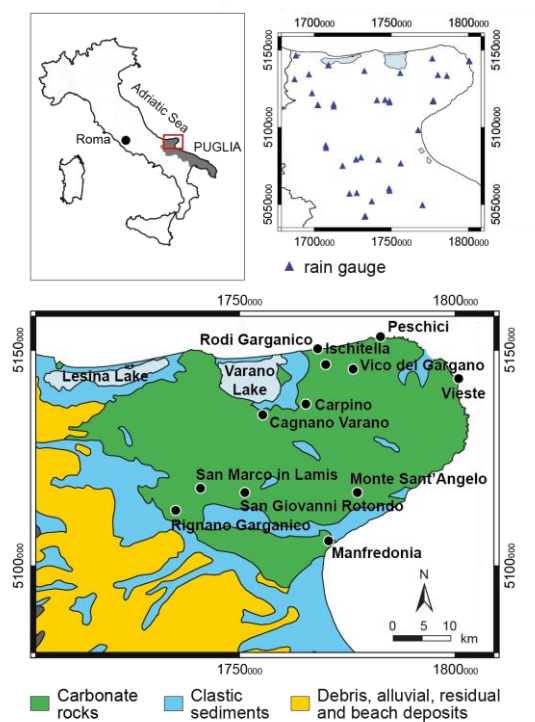


Figure 1: Upper left map shows location of the study area (red rectangle) in Italy. Grey area is the Puglia (Apulia) region. Upper right map shows location of 39 rain gauges in the study area and the neighbouring area. Lower map shows main rock types (colours) and place names in the study area. WGS84/Pseudo Mercator (EPSG: 3857).

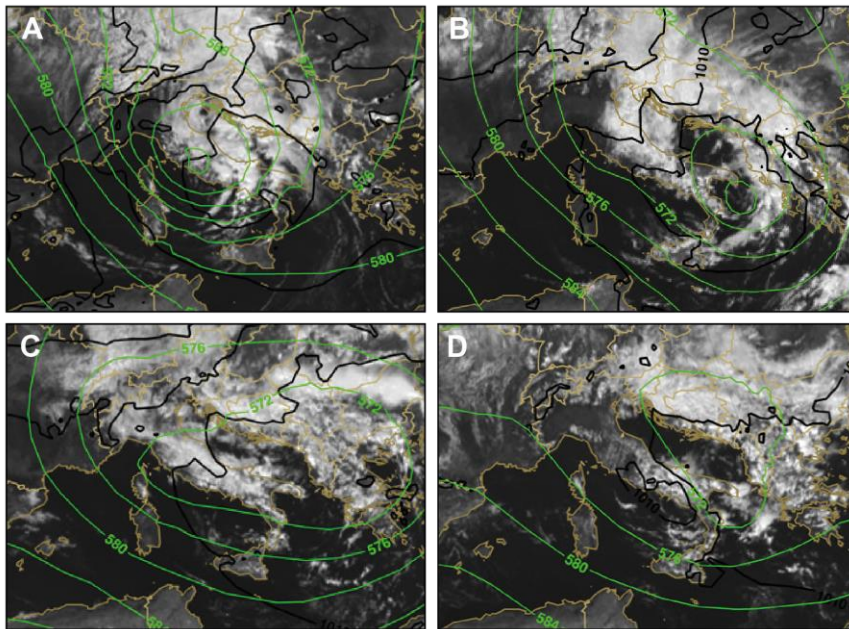
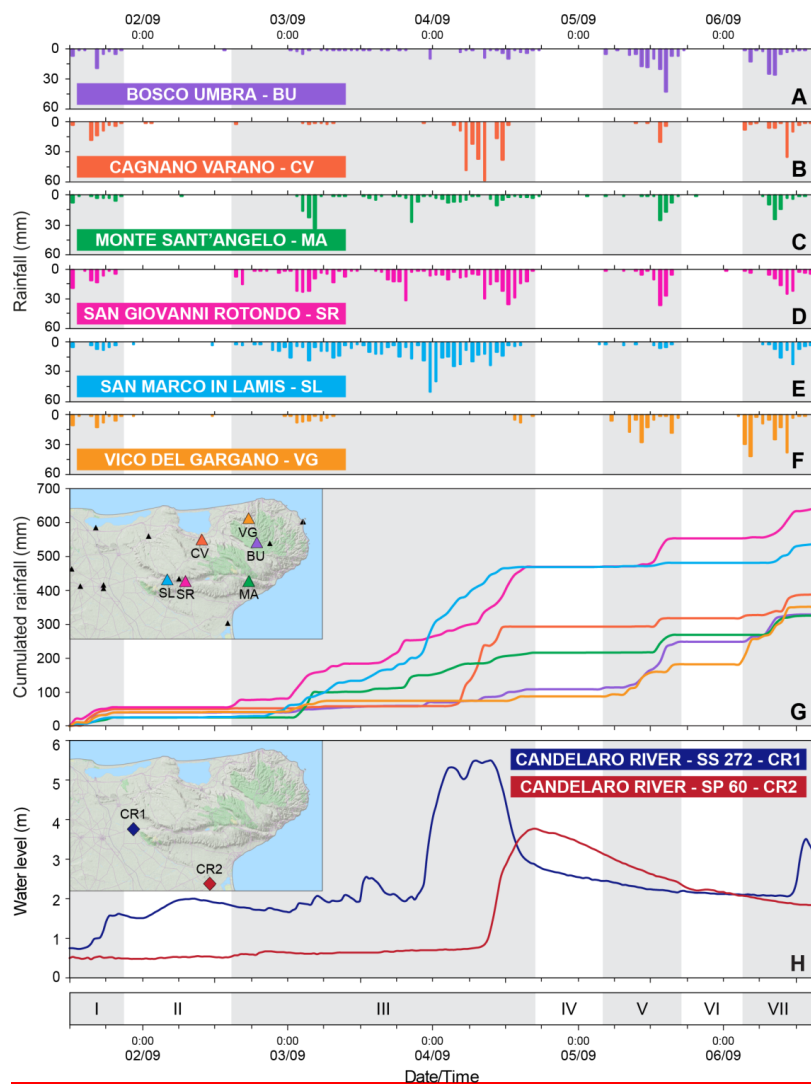


Figure 2: Meteorological setting for the period 1-6 September 2014 ~~in~~over the ~~Gargano Promontory~~central and southern Italy. Images show Meteosat Second Generation (MSG) – Visible (VIS) 0.6 μm for: (A) 1 September 2014, 12:00 UTC, (B) 2 September 2014, 12:00 UTC, (C) 3 September 2014, 12:00 UTC, (D) 6 September 2014, 12:00 UTC. Green lines show geopotential height of 500 hPa pressure level. Black lines show mean ~~seal~~sea level pressure. Light brown lines show geographical boundaries. Source: <http://www.eumetrain.org>.



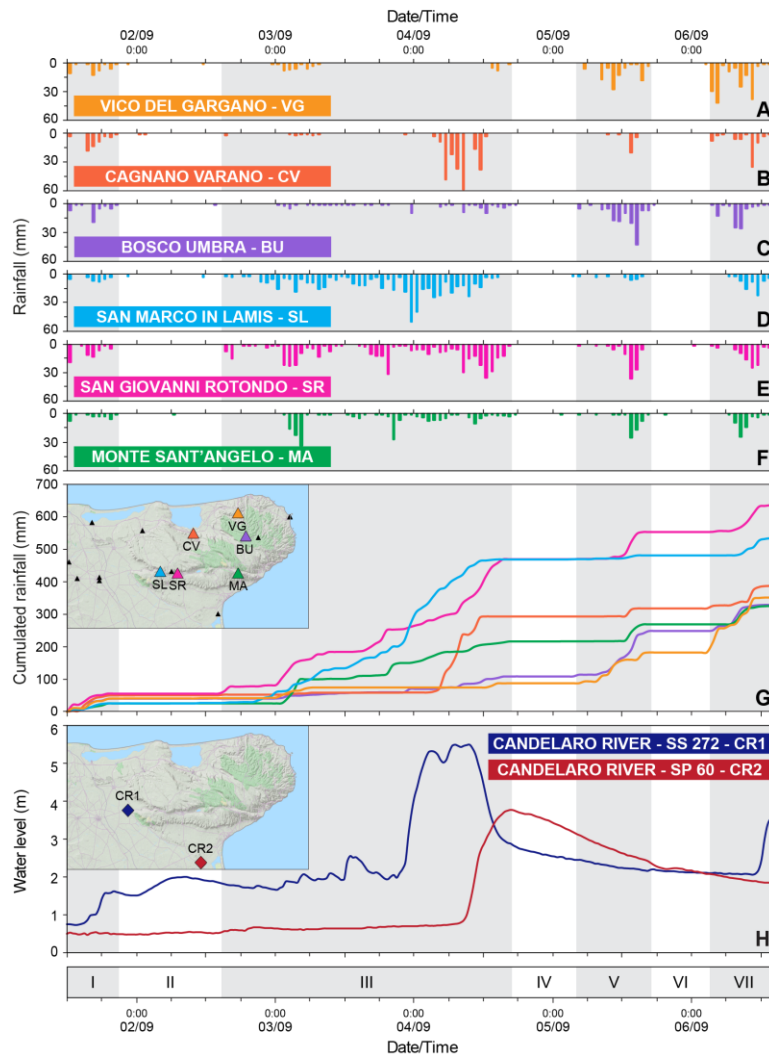


Figure3: Rainfall and hydrological conditions for the period 1-6 September 2014 in the Gargano Promontory. (A) to (F) hourly rainfall measurements for six rain gauges in the study area. (G) Cumulated rainfall for the same rain gauges; inset shows location of the rain gauges. (H) River water level at two gauging stations along the Candelaro River; inset shows location of gauging stations. In the charts, shaded areas are rainfall ("wet") periods (I, III, V, VII) and white areas are no-rainfall ("dry") periods (II, IV, VI).

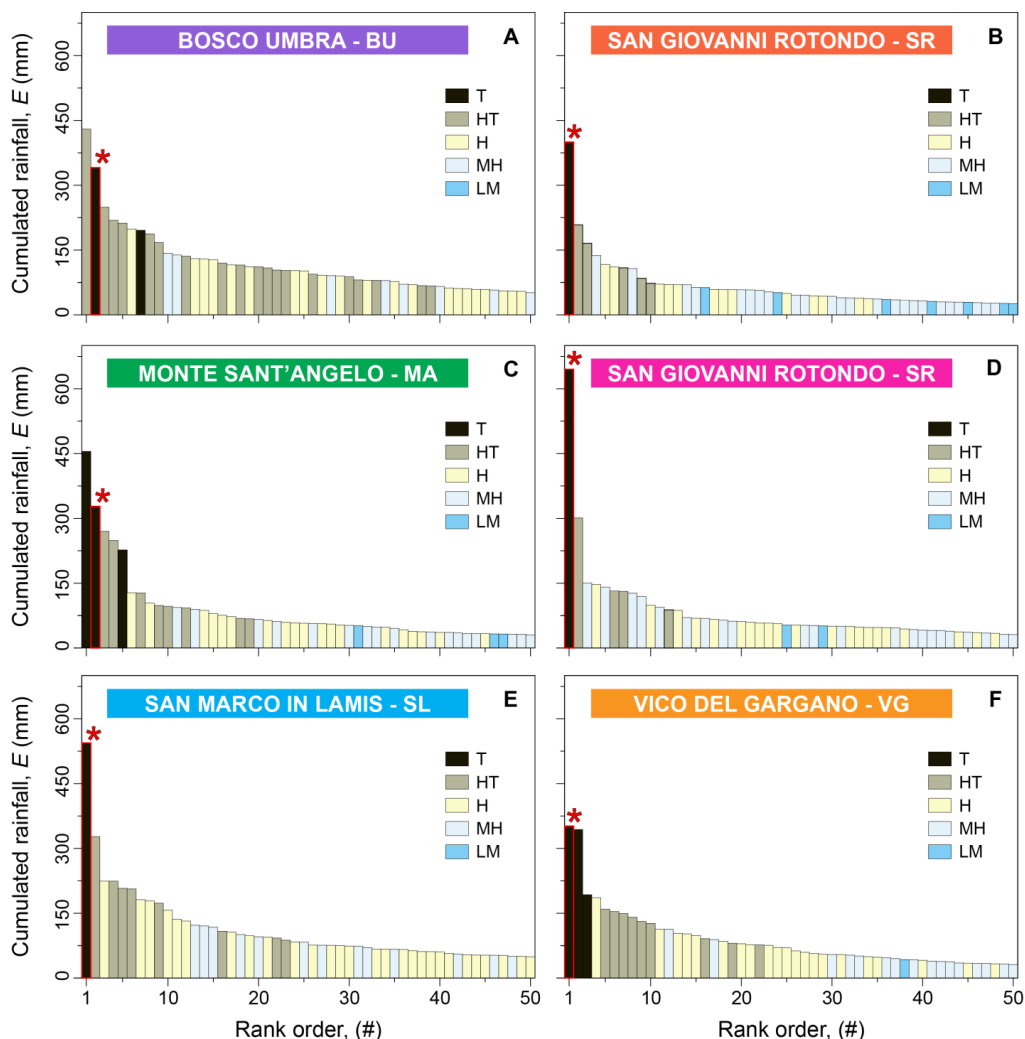
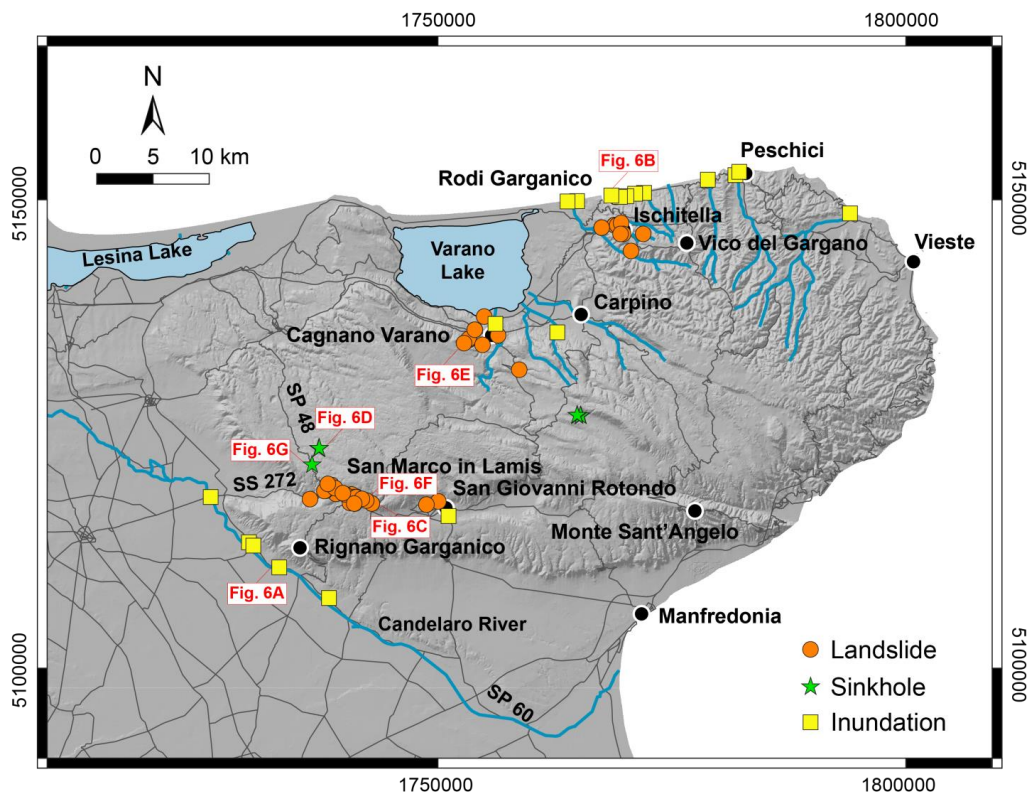


Figure 4: Rank order analysis of rainfall events in the Gargano Promontory from April 2009 to April 2016. Coloured bars show cumulated event rainfall for six rain gauges: (A) Bosco Umbra - BU, (B) Cagnano Varano - CV, (C) Monte Sant'Angelo - MA, (D) San Giovanni Rotondo - SR, (E) San Marco in Lamis - SM, and (F) Vico del Gargano - VG. Bars arranged from high (left) to low (right) values. Colours identify six categories of cumulated rainfall proposed by Alpert et al. (2002). Legend: T, torrential rainfall [$128\text{-up mm day}^{-1}$]; HT, Heavy-Torrential [$64\text{--}128\text{ mm day}^{-1}$]; H, Heavy [$32\text{--}64\text{ mm day}^{-1}$]; MH, Moderate-Heavy [$16\text{--}32\text{ mm day}^{-1}$]; LM, Light-Moderate [$4\text{--}16\text{ mm day}^{-1}$]. Black bars with red asterisks show the 1-6 September 2014 period.



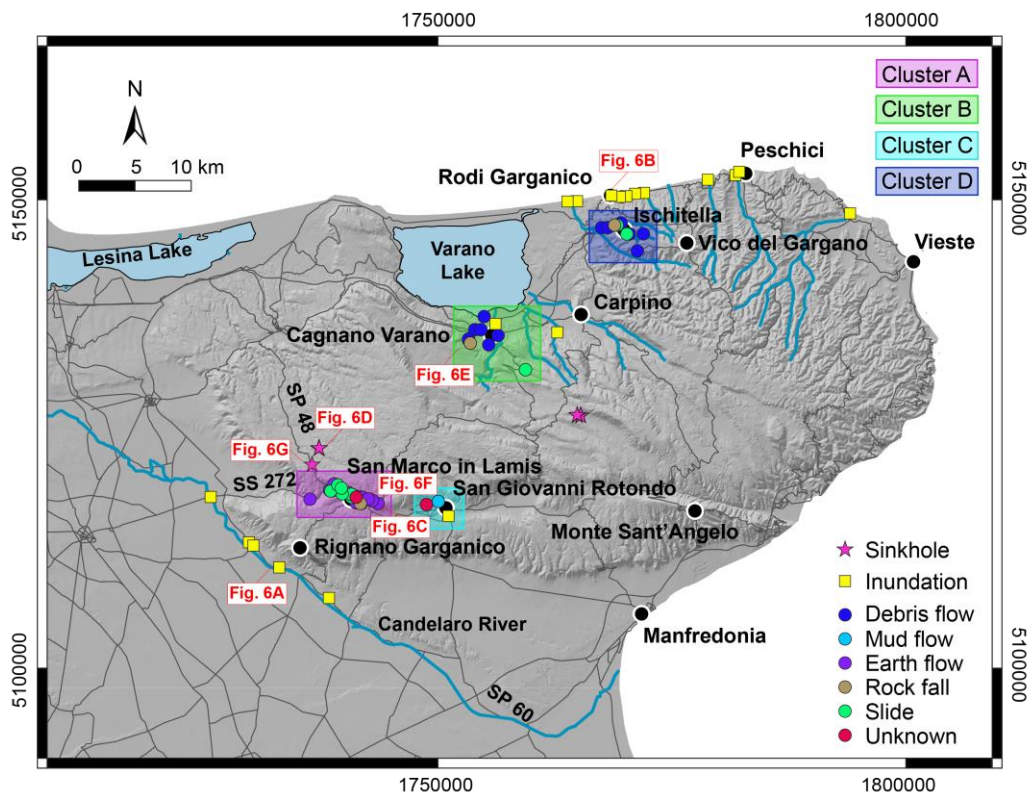
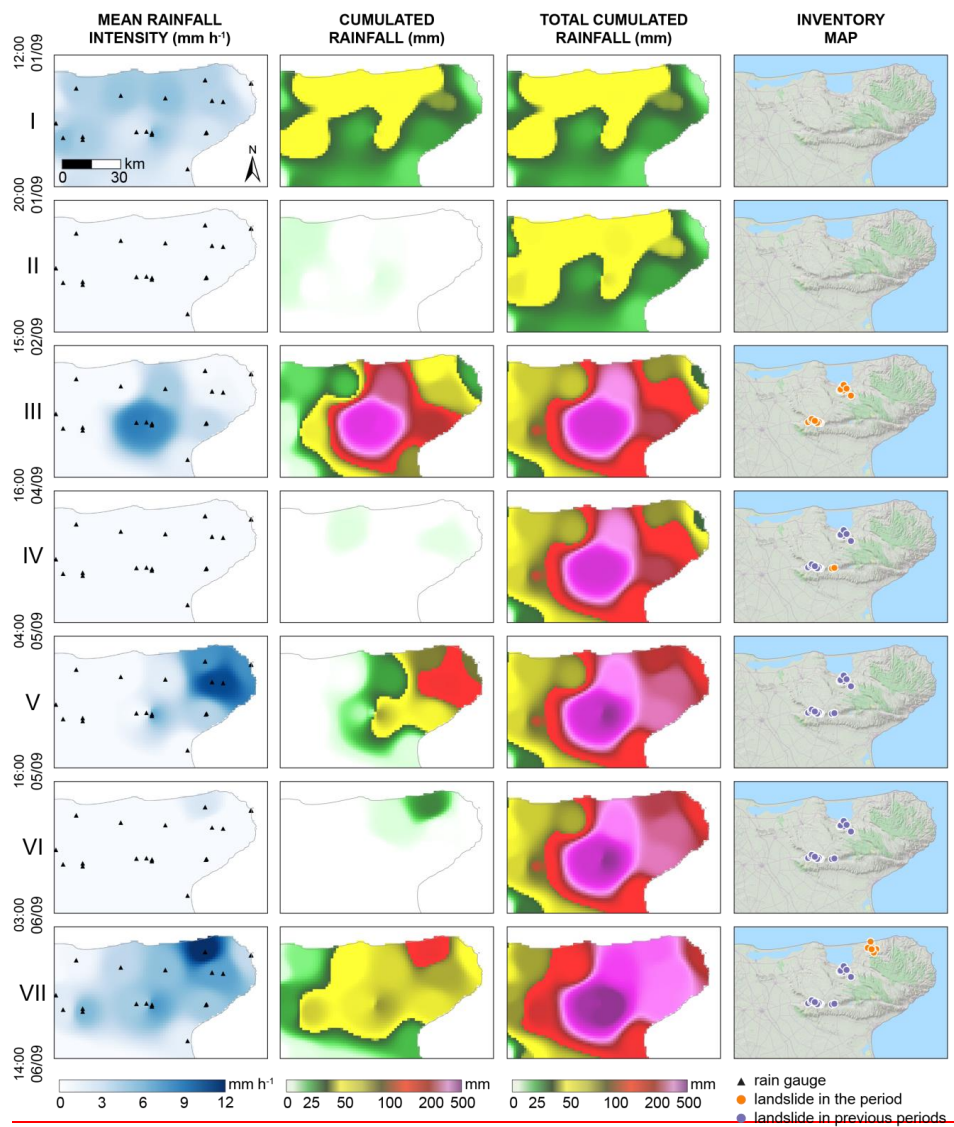


Figure 5: Map showing location of event landslides, floods, and sinkholes triggered by the 1-6 September 2014, intense rainfall event in the Gargano Promontory. WGS84/Pseudo Mercator (EPSG:3857).



Figure 6: Examples of geo-hydrological hazards triggered by the ~~4~~4-6 September 2014 torrential rainfall in the Gargano Promontory. (A) Flood plain inundated by the Candelaro River (photograph: Regione Puglia). (B) Inundation in Rodi Garganico (photograph: Regione Puglia). (C and F) Shallow landslides in the town of San Marco in Lamis. (D) Sinkhole in San Marco in Lamis (photograph: M. Parise). (E) Shallow landslide in Cagnano Varano (photograph: Regione Puglia). (G) Sinkhole in Monte Sant'Angelo (photograph: M. Parise).



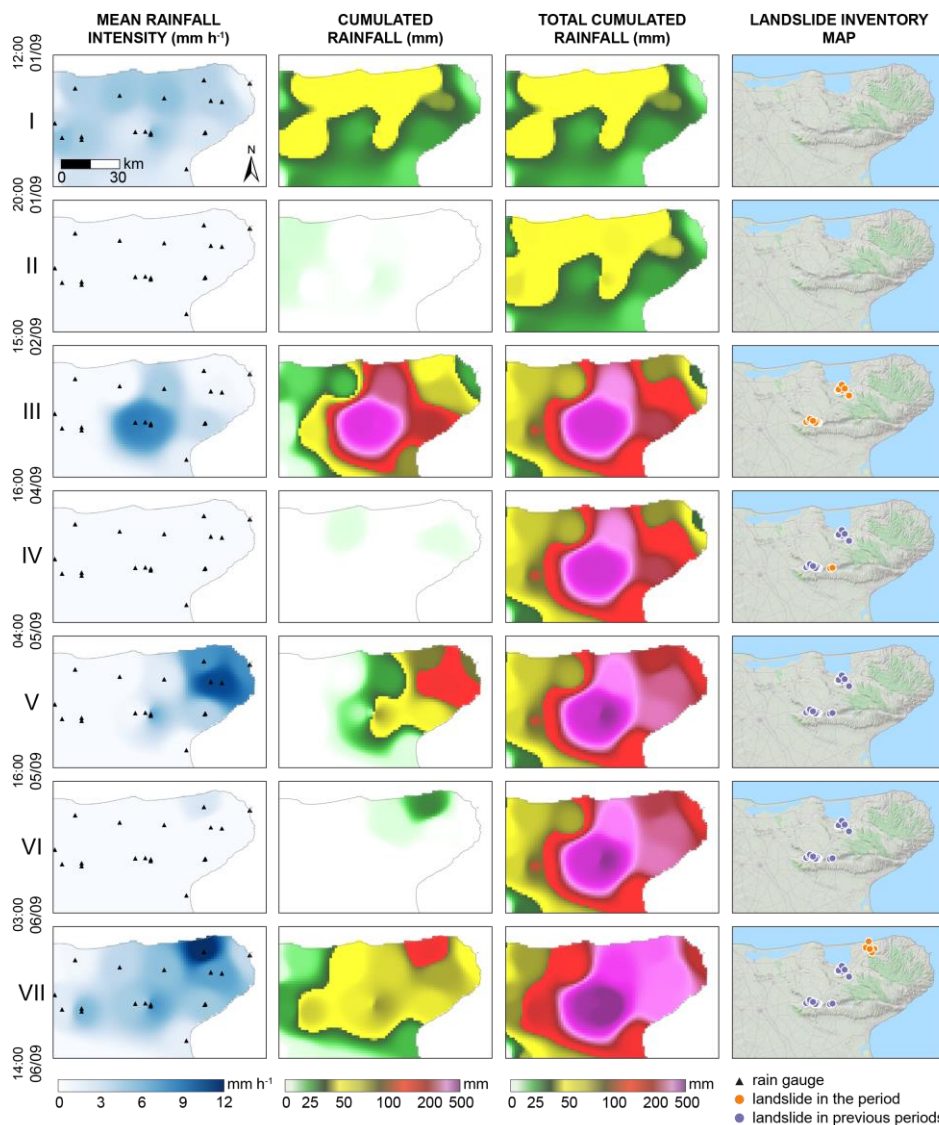


Figure 7: Analysis of the spatial and temporal distribution of the event rainfall, and of the triggered event landslides. See text for explanation.

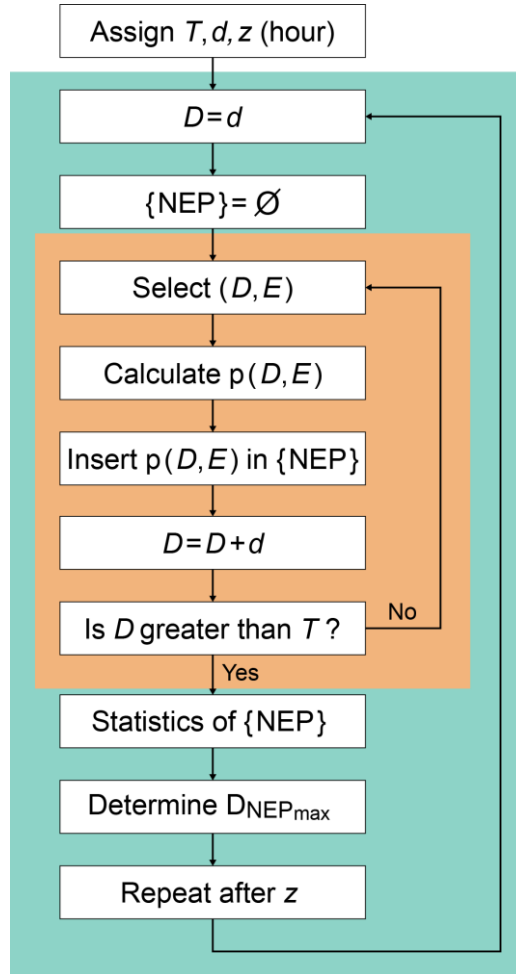


Figure 8: Logical **scheme** for the E-NEP algorithm. D , rainfall duration, in hours. E , cumulated rainfall, in mm. T , maximum length of the considered rainfall period, in hours. d , time step used to increment the duration of the rainfall period, up to T , in hours. z , time interval before the next set of (D, E) pairs is computed, in hours. $\{NEP\}$, set of non-exceedance probability (NEP) values obtained for each (D, E) pair adopting the method proposed by Brunetti et al. (2010) and Peruccacci et al. (2012). Statistics of $\{NEP\}$ are 10th, 25th, 50th, 75th, and 90th percentiles. and NEP_{max} is the maximum value of NEP. $D_{NEP_{max}}$, event rainfall duration corresponding to NEP_{max} . External (blue) loop is run every z hours, or fraction of hour. Internal (orange) loop runs from d to T , in d time steps. In Figs. 9, 10 z and d were set to 1 hour and T to 96 hours. See text for explanation.

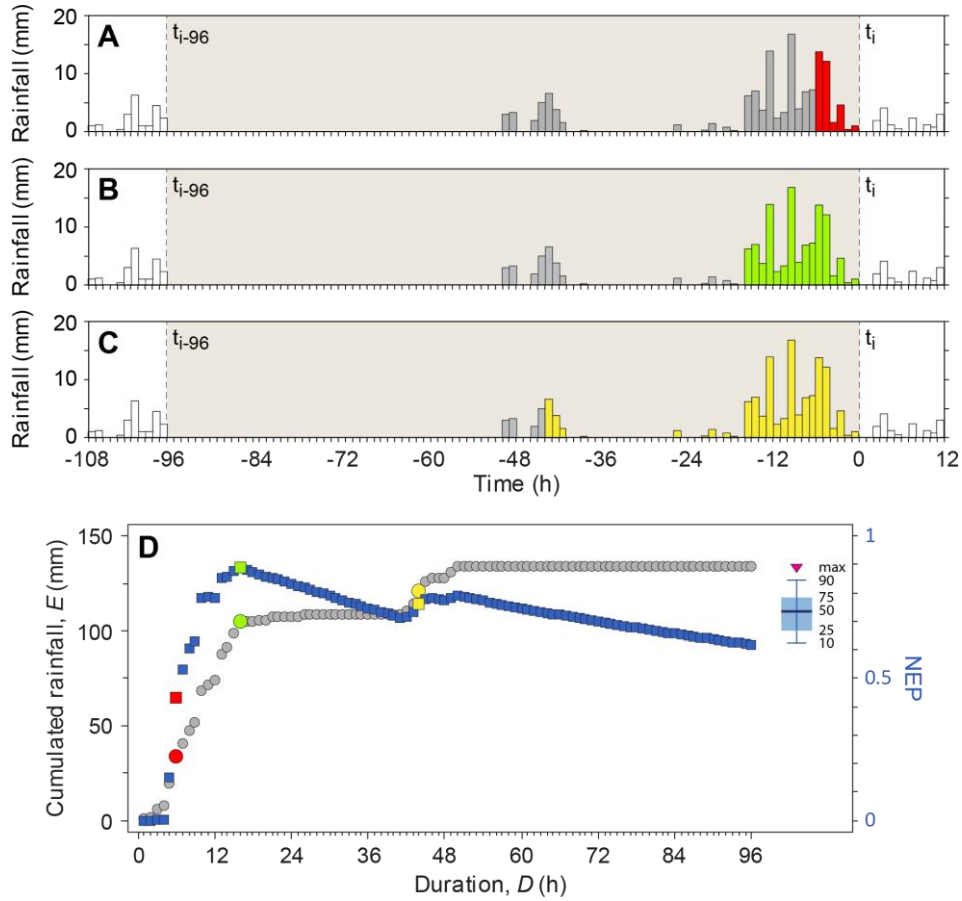


Figure 9: Exemplification of the E-NEP algorithm used to provide a non-exceedance probability (NEP) of possible landslide occurrence. (A), (B), (C) show the same rainfall record, and three antecedent conditions corresponding to durations of (A) $D = 6$ hours (red bars), (B) $D = 16$ hours (green bars), and (C) $D = 44$ hours (yellow bars). (D) Shows rainfall (D, E) pairs (grey dots); red, green yellow dots represent the (D, E) pairs corresponding to the conditions shown in (A), (B), and (C). Blue squares show the corresponding non-exceedance probabilities (NEP). Green square represents NEP_{max} . See text for explanation.

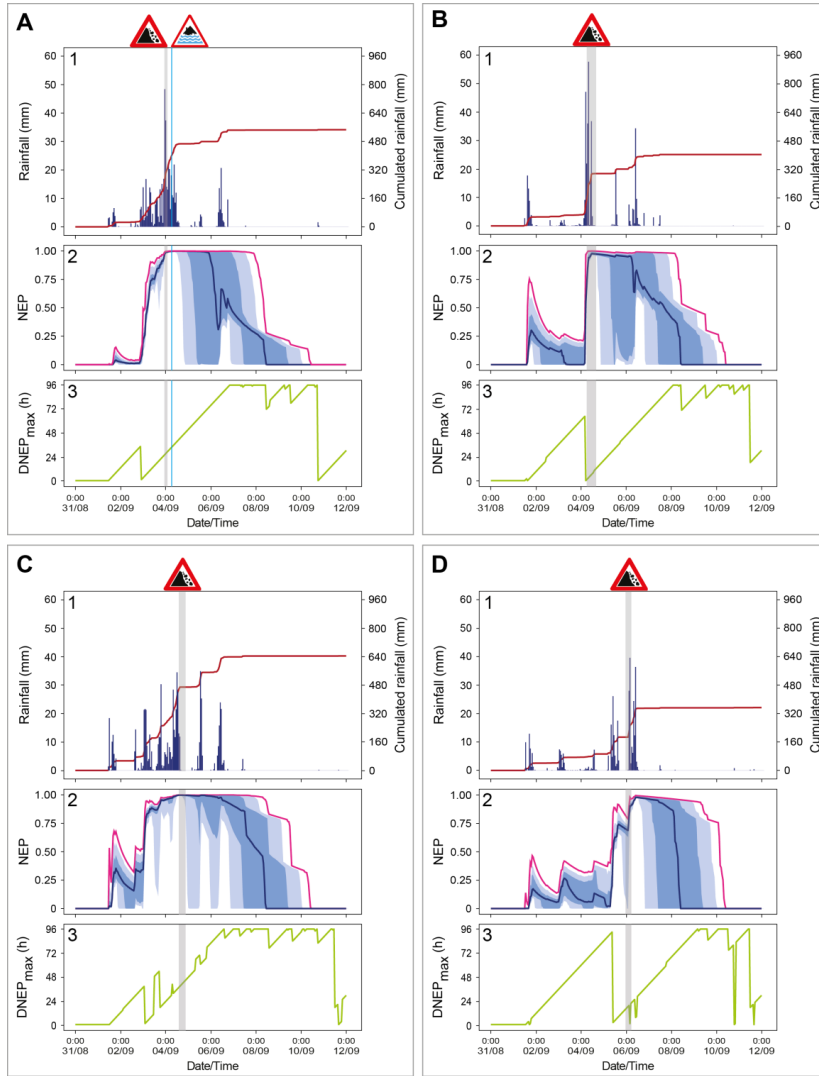


Figure 10: Results of the application of the E-NEP algorithm to synthetic rainfall records reconstructed for the locations of four landslide clusters. (A) landslide cluster A; (B) landslide cluster B; (C) landslide cluster C; (D) landslide cluster D. Each panel shows, from top to bottom: (1) hourly rainfall record (blue bars) and cumulated event rainfall (red line); (2) median, E-NEP₅₀ (orange line) and maximum, E-NEP_{max} (purple line) values of the non-exceedance probability; ranges E-NEP₂₅ – E-NEP₇₅ (dark blue shade) and E-NEP₁₀ – E-NEP₉₀ (light blue shade); (3) rainfall duration corresponding to the most-critical rainfall condition, D-NEP_{max} (green line). The period of occurrence of the landslides (identified by the landslide road sign) is shown by a grey shaded area. The occurrence time (and the associated uncertainty) of nine landslides (cfr. section 3.3) is used to define the landslide

occurrence period of the four clusters. The time of occurrence of peak flow (identified by the flood road sign) is shown by the vertical blue line. See text for explanation.