

Interactive comment on “The propagation of inventory-based positional errors into statistical landslide susceptibility models” by S. Steger et al.

S. Steger et al.

stefan.steger@univie.ac.at

Received and published: 10 November 2016

We thank the anonymous referee #1 for the constructive comments on the present manuscript. We were very pleased that the topic tackled by our study was judged as “very interesting” and “very important whenever a landslide susceptibility model is included in an urban or regional land planning” and that the paper was considered to be “well organized” with accurate figures. We were also delighted that only “very few corrections” were considered as necessary prior to publication. For details, please follow our point-by-point replies given in the supplement (as well as the revised figures).

Please also note the supplement to this comment:

<http://www.nat-hazards-earth-syst-sci-discuss.net/nhess-2016-301/nhess-2016-301-AC1-supplement.pdf>

[Printer-friendly version](#)

[Discussion paper](#)



Interactive comment on Nat. Hazards Earth Syst. Sci. Discuss., doi:10.5194/nhess-2016-301, 2016.

NHESSD

Interactive
comment

[Printer-friendly version](#)

[Discussion paper](#)



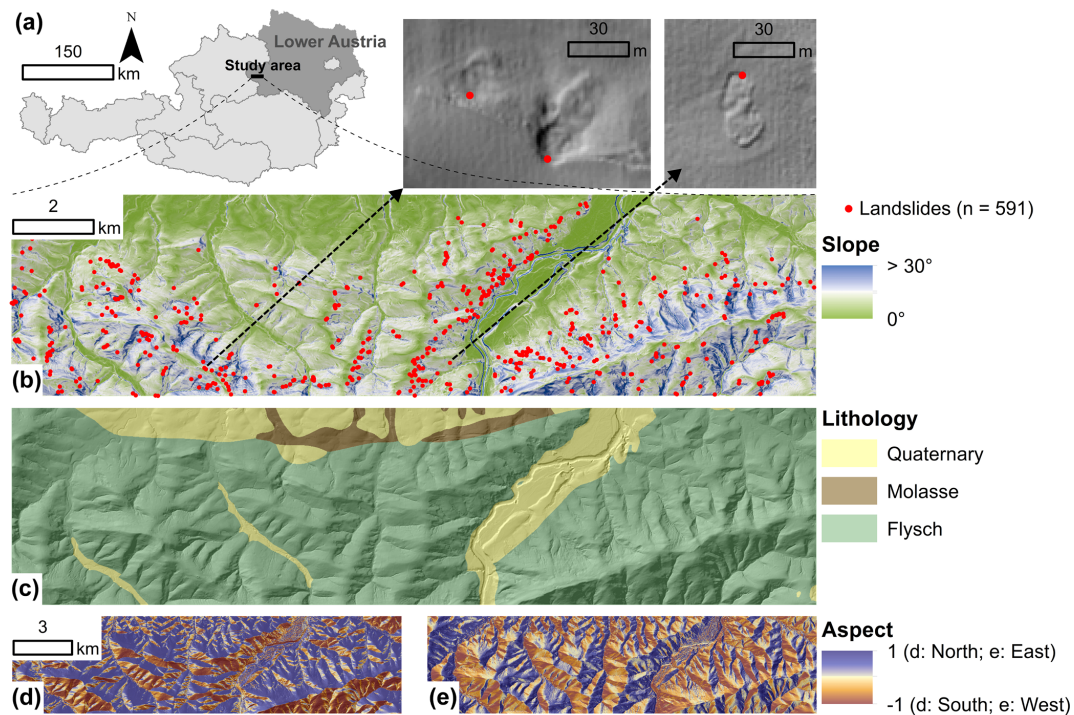
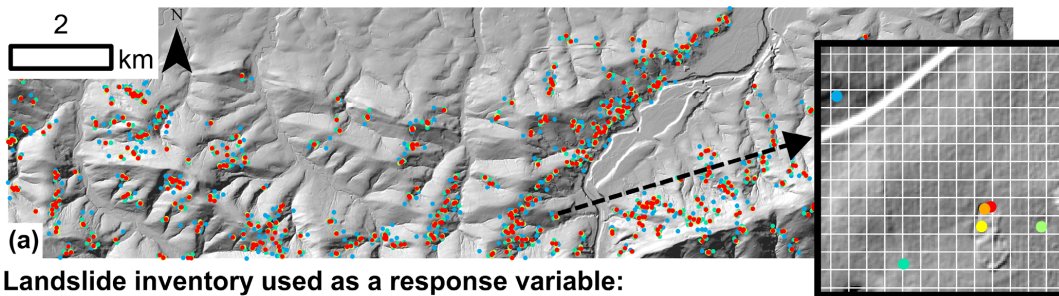


Fig. 1.



Landslide inventory used as a response variable:

- Unmodified ("0") ● Inaccurate ("μ20")
- Inaccurate ("μ5") ● Inaccurate ("μ50")
- Inaccurate ("μ10") ● Inaccurate ("μ120")

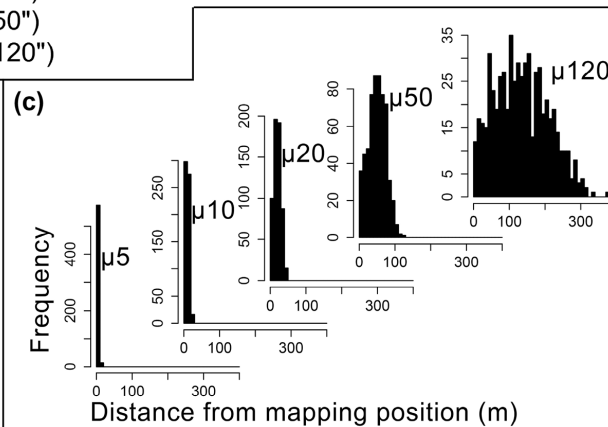
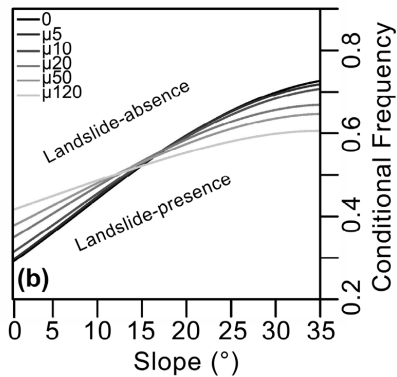


Fig. 2.

[Printer-friendly version](#)

[Discussion paper](#)



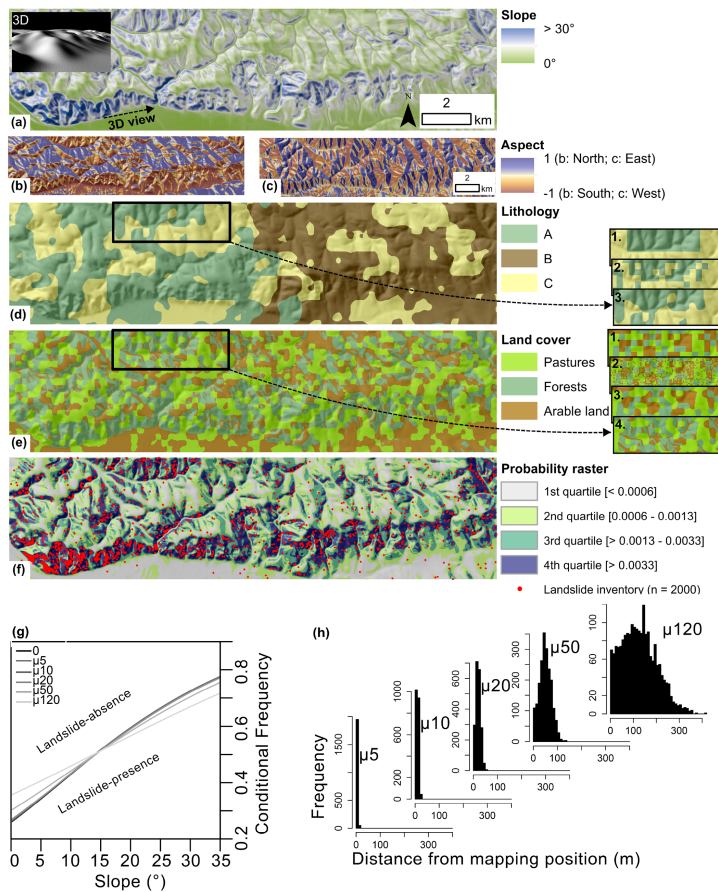


Fig. 3.

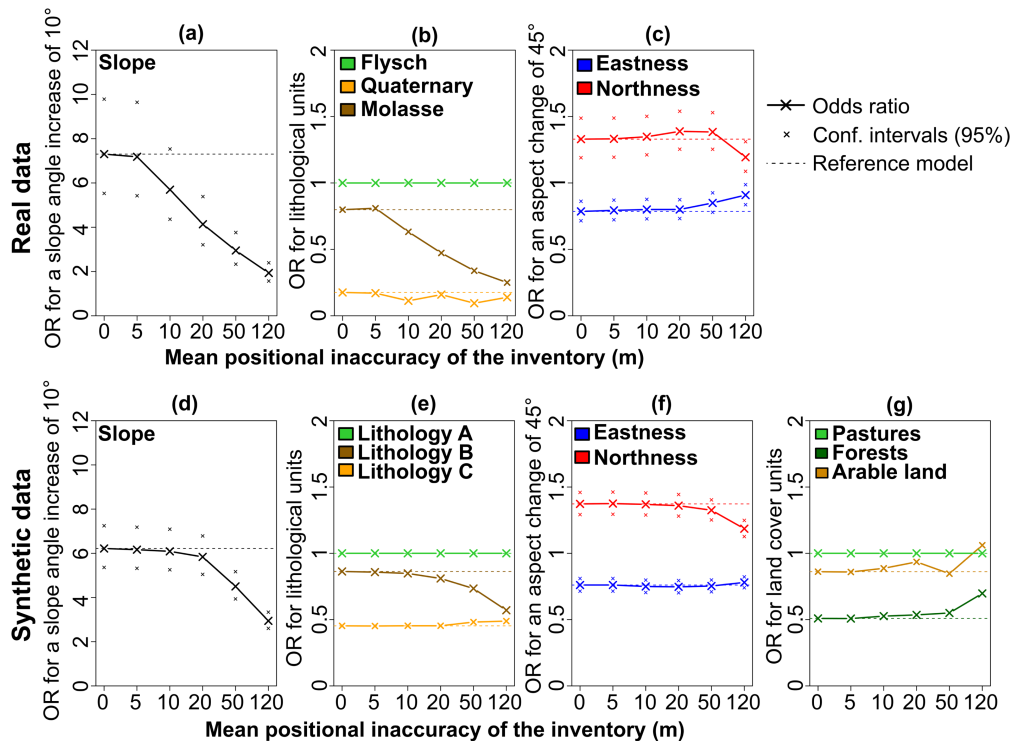


Fig. 4.

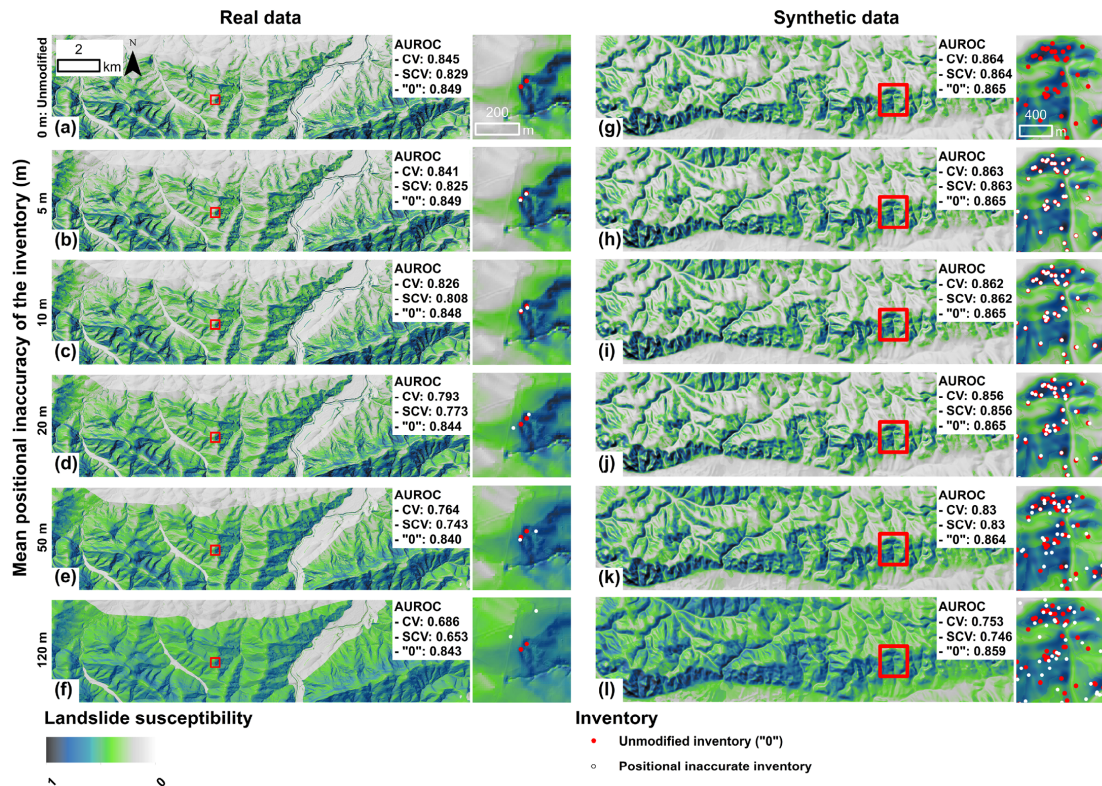


Fig. 5.

Printer-friendly version

Discussion paper



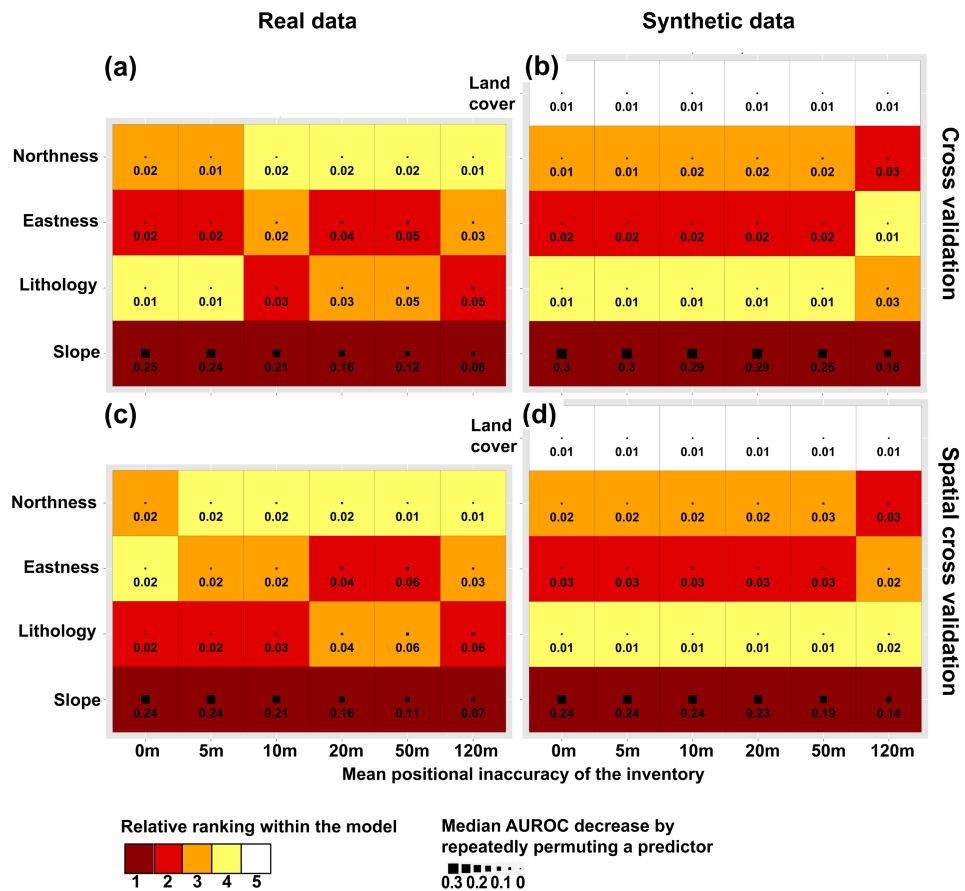


Fig. 6.