



1 Natural hazard fatalities in Switzerland from 1946 to 2015

2

3 Alexandre Badoux¹, Norina Andres¹, Frank Techel², Christoph Hegg¹

4

5 ¹Swiss Federal Research Institute WSL, Zürcherstrasse 111, CH-8903 Birmensdorf, Switzerland

6 ²WSL Institute for Snow and Avalanche Research SLF, Flüelastrasse 11, CH-7260 Davos, Switzerland

7

8 *Correspondence to:* Alexandre Badoux (badoux@wsl.ch)

9

10 **Abstract.** A database of fatalities caused by natural hazard processes in Switzerland was compiled for the
11 period between 1946 and 2015. Using information from the Swiss flood and landslide database and the
12 Swiss destructive avalanche database, the data set was extended back in time and more hazard processes
13 were added by conducting an in-depth search of newspaper reports. The new database now covers all
14 natural hazards common in Switzerland categorized into seven process types: flood, landslide, rockfall,
15 lightning, windstorm, avalanche, and other processes (e.g. ice avalanches, earthquakes). Included were all
16 fatal accidents associated with natural hazard processes where victims did not expose themselves to an
17 important danger on purpose or wilfully. The database contains information on 635 natural hazard events
18 causing 1023 fatalities, which corresponds to a mean of 14.6 victims per year. The most common causes of
19 death were snow avalanche (37%), followed by lightning (16%), flood (12%), windstorm (10%), rockfall
20 (8%), landslide (7%) and other processes (9%). About 50% of all victims died in one of the 507 single-
21 fatality events; the other half of victims were killed in the 128 multi-fatality events.

22 The number of natural hazard fatalities that occurred annually during our 70-year study period ranged from
23 two to 112 and exhibited a distinct decrease over time. While the number of victims during the first three
24 decades (until 1975) ranged from 191 to 269 per decade, it ranged from 47 to 109 in the four following
25 decades. This overall decrease was mainly driven by a considerable decline in the number of avalanche and
26 lightning fatalities. About 75% of victims were males in all natural hazard events considered together, and
27 this ratio was roughly maintained in all individual process categories except landslides (lower) and other
28 processes (higher). The ratio of male to female victims was most likely to be balanced when deaths
29 occurred at home (in or near a building), a situation that mainly occurred in association with landslides and
30 avalanches. The average age of victims of natural hazards was 35.9 years, and accordingly, the age groups
31 with the largest number of victims were the 20-29 and 30-39 year-old groups, which in combination
32 represented 34% of all fatalities. It appears that the natural hazard fatality rate in Switzerland during the
33 past 70 years has been relatively low in comparison to rates in other countries or rates of other types of fatal
34 accidents in Switzerland.

35



36 Keywords: natural hazard fatality, fatality rate, flood, landslide, avalanche, loss of life, natural disaster

37 **1. Introduction**

38 Every year, world-wide natural hazard events not only generate tremendous financial damage costs but also
39 cause a large number of human fatalities (MunichRe, 2015). According to the NatCatSERVICE database of
40 MunichRe, the average annual global loss of life due to natural catastrophes was 68,000 during the last ten
41 years and 54,000 during the last thirty years (23,000 in 2015; Ins. Inf. Inst., [www.iii.org/fact-](http://www.iii.org/fact-statistic/catastrophes-global)
42 [statistic/catastrophes-global](http://www.iii.org/fact-statistic/catastrophes-global)).

43

44 In scientific literature, information and data sets on loss of human lives due to specific natural hazard
45 processes cover various time periods and exist at different aggregation levels: at the global scale (e.g.
46 Jonkman, 2005; Petley, 2012; Auker et al., 2013; Dowling and Santi, 2014), the continental scale (e.g. Di
47 Baldassarre et al., 2010; Sepúlveda and Petley, 2015) and most commonly the regional/national scale (e.g.
48 Guzzetti, 2000; Ashley and Ashley, 2008; Vranes and Pielke, 2009; Singh and Singh, 2015). Moreover,
49 there are studies that describe the circumstances during specific catastrophic natural hazard events and/or
50 assess the patterns and reasons behind the associated massive loss of life (e.g. Chowdhury et al., 1993; Tsai
51 et al., 2001; Doocy et al., 2007; Jonkman et al., 2009; Ando et al., 2013).

52

53 While some authors have analysed natural hazard mortality data that include many hazard types (e.g. Shah,
54 1983; Noji, 1991; Borden and Cutter, 2008), the bulk of studies have focussed on a distinct hazard process.
55 Jonkman (2005) studied statistics about loss of human life caused by various freshwater flood types (river
56 floods, flash floods and drainage problems) on a global scale and for the period from 1975 to June 2002
57 based on the EM-DAT International Disaster Database. This investigation showed that while flash flood
58 events have the highest average fatality rate (deaths divided by number of affected persons), Asian river
59 floods are most devastating in terms of the number of persons killed or affected. In addition, very high
60 death tolls have been reported for coastal flood events (e.g. Chowdhury et al., 1993) that were not included
61 in Jonkman (2005). On a national scale, flood fatalities have been assessed by many authors for countries
62 all around the world, such as the USA (Ashley and Ashley, 2008), India (Singh and Kumar, 2013), Pakistan
63 (Paulikas and Rahman, 2015) and Australia (Coates, 1999; FitzGerald et al., 2010).

64

65 Petley (2012) assembled a global data set of fatalities from non-seismically triggered landslides that took
66 place from 2004 to 2010 based on the Durham Fatal Landslide Database (DFLD). The total number of
67 landslides and fatalities during the 7-year period turned out to be an order of magnitude larger than
68 numbers suggested by other sources, and the study indicated that most fatalities occur in Asia. Most
69 recently, Sepúlveda and Petley (2015) published a new data set of landslides that caused loss of life in
70 Central and South America as well as in the Caribbean. This continental analysis used an enhanced version
71 of the DFLD and applied key search terms in Spanish. In a study focusing on fatalities caused by debris



72 flows (often included in landslides studies), Dowling and Santi (2014) considered 213 events that occurred
73 between 1950 and 2011 and during which a total of 77,779 people were killed. Results of this global
74 analysis provided evidence that more debris-flow fatalities tend to occur in developing countries. On a
75 national scale, landslide events with fatal consequences were compiled by Guzzetti (2000) for events that
76 occurred in contemporary Italy from 1279 to 1999. Fast mass movements, such as rockfall events,
77 rockslides, rock avalanches and debris flows were included in this study and were found to have caused the
78 largest number of fatalities.

79
80 Loss of life related to meteorological hazard events, such as lightning and all the different types of wind
81 storms, has also been the subject of many national and regional studies. In the USA, medium- to long-term
82 data sets of wind related deaths have been investigated, for example for tornados (Ashley, 2007) and
83 hurricanes (Rappaport, 2000; Czajkowski et al., 2011), as well as for (nontornadic) convective (Black and
84 Ashley, 2010) and nonconvective (Ashley and Black, 2008) high-wind events. Recent publications have
85 presented national lightning data sets, for example from the UK (Elsom, 2001), India (Singh and Singh,
86 2015), Australia (Coates et al., 1993), Colombia (Navarrete-Aldana et al., 2014), USA (López and Holle,
87 1996; Curran et al., 2000), and Swaziland (Dlamini, 2009).

88
89 Geophysical events such as tsunamis and volcanic activity might not be very relevant for a country like our
90 study area Switzerland, but are of considerable importance when assessing consequences of natural hazards
91 at a global level (e.g. Auken et al., 2013). Earthquakes, in contrast, have occurred in Switzerland with
92 dramatic effects (Fäh et al., 2009), but events causing fatalities or large amounts of damage are rare. For
93 countries more frequently struck by seismic activity, various fatality databases exist (e.g. Vranes and
94 Pielke, 2009).

95
96 In Switzerland, fatalities caused by floods, debris flows, and landslides have been systematically collected
97 since 1972. They are recorded in the Swiss flood and landslide damage database (Hilker et al., 2009) and
98 were briefly analysed by Schmid et al. (2004). Deaths due to rockfall incidents have been included in the
99 database since 2002. For disastrous events causing loss of life that occurred before 1972, only partial and
100 scattered information is available (e.g. Röthlisberger, 1991). In parallel, information on loss of life caused
101 by snow avalanches in Switzerland has been collected since the hydrological year 1936/1937 by the WSL
102 Institute for Snow and Avalanche Research SLF. To our knowledge, no systematic data acquisition of
103 fatalities and damage induced by convective and non-convective high winds and lightning has been
104 carried out at national scale in Switzerland.

105
106 In the study presented here, we compiled the available data on natural hazard fatalities mentioned above,
107 extended the period covered by the database, and expanded it to include all process types relevant for the
108 study area. We present this new, detailed 70-year (1946-2015) data set of loss of life in Switzerland caused



109 by (i) floods, (ii) debris flows, (iii) landslides and hillslope debris-flows, (iv) rockfall events and rockslides,
110 (v) windstorms, (vi) lightning strikes, (vii) earthquakes and (viii) avalanches. Temporal and spatial patterns
111 in the results are discussed and the numbers of fatalities as well as the characteristics of the underlying
112 incidents for different process types are assessed. Finally, we compare our data with similar data from other
113 countries and regions and attempt to explain differences qualitatively.

114

115 According to the Federal Constitution of the Swiss Confederation, the cantons and municipalities are
116 responsible to ensure the protection of the population against natural hazards. The aim of this study is to
117 support authorities to better understand the occurrence of fatal incidents, to identify potential improvements
118 in hazard prevention and to further reduce the number of victims of natural hazards.

119 **2. Study area**

120 Switzerland is located in central Europe between latitudes 45° and 48° N, and between longitudes 5° and
121 11° E, with a total area of 41,285 km² and an altitudinal range of 193 to 4634 m a.s.l. The Swiss
122 Confederation consists of 20 cantons and 6 half cantons, and its territory can be roughly divided into four
123 regions based on its geomorphology (see Figure 1): the Alps (a high-altitude mountain range running across
124 the central-south of the country), the Swiss Plateau (a relatively flat area between Lake Geneva and Lake
125 Constance), the Prealps (the transitional area between the Alps and the Swiss Plateau) and the Jura (a hilly
126 mountain range in the north-west). The population grew from 4.5 to 8.3 million people between 1946 and
127 2015 and is clustered mostly on the Swiss Plateau (over 60% of the total population is located on less than a
128 third of the total area of the country). The Swiss climate is temperate but can vary regionally. In large parts
129 of the Alps the mean annual rainfall is around 2000 mm/year or more, and along the Swiss Plateau this
130 value amounts to 1000-1500 mm/year. Most precipitation falls during the summer months.

131 **3. Data and methods**

132 The data for this study were extracted from the Swiss flood and landslide damage database (section 3.1)
133 and the Swiss destructive avalanche database (section 3.2). The data set (except for avalanches) was then
134 extended (i) in time to include an additional period of 26 years back to the year 1946 and (ii) in breadth to
135 include additional relevant natural hazard processes, such as lightning, windstorm, and earthquake, by
136 carrying out an extensive newspaper search (sections 3.3 and 3.4).

137 **3.1 Swiss flood and landslide damage database**

138 Since 1972, fatalities and estimates of financial damage costs caused by naturally triggered floods, debris
139 flows, landslides and (since 2002) rockfall events have been collected by the Swiss Federal Research
140 Institute WSL in the Swiss flood and landslide damage database (Hilker et al., 2009; Badoux et al., 2014).
141 Fatality and damage information is primarily provided by approximately 3000 Swiss newspapers and



142 magazines, which are scanned daily by a media-monitoring company. Additional information is often
143 compiled from insurance companies and the websites of public authorities such as police and fire brigades.
144 An in-depth description of the structure of the Swiss flood and landslide damage database was presented by
145 Hilker et al. (2009). For this study, the database provided information on a total of 129 deaths due to floods,
146 debris flows, landslides, hillslope debris-flows or rockfall from 1972 to 2015. In a next step, this basic data
147 set was expanded using data on avalanche victims.

148 **3.2 The Swiss destructive avalanche database**

149 Data on avalanche casualties since the winter 1936/37 are stored in the destructive avalanche database from
150 the WSL Institute for Snow and Avalanche Research SLF (Techel et al., 2015). In the 79 years from
151 1936/37 to 2014/15, 1255 avalanches killed 1961 people in Switzerland. We retrieved data for our study
152 period from this database and considered cases that occurred (i) in settlement areas, (ii) on high-alpine
153 building sites, (iii) on transportation corridors (including roads and railway lines, ski runs and winter hiking
154 trails, if any of these were officially open or if they were closed but the casualty was work related), and (iv)
155 on hiking trails during summer if the trail was open and snow-free.

156

157 We explicitly excluded all cases that occurred outside of transportation corridors and settlements (except
158 hiking trails in summer, see (iv) above). Thus, cases associated with ski or snowshoe touring, and skiing or
159 snowboarding away from open ski trails were not included in our data set. Also, we did not incorporate
160 avalanche fatalities related to vehicles illegally driving on officially closed roads. The destructive avalanche
161 database is considered complete for fatality data, and data quality is generally very high. Thus, no
162 systematic search of avalanche related events in a newspaper was necessary.

163 **3.3 Further extension of the record of natural hazard fatalities in Switzerland**

164 With the aim of extending the data series to 70 years and combining it with other natural hazard processes
165 like windstorm, lightning, earthquake and ice avalanche, we made a search in a newspaper. We selected the
166 „Neue Zürcher Zeitung“ (NZZ) because it is a national newspaper and a digital archive exists back until
167 1780. The NZZ is written in German, which is the most spoken language in Switzerland (see also section
168 5.1). We accessed the digital archive via an internet platform, where a keyword search was possible. In a
169 first step, we derived adequate keywords (in German) for the search. We selected the years 1986-1995, for
170 which we already had some data from the Swiss flood and landslide database, as validation period. We
171 generated a list with possible keywords and checked how often these words were used in the newspaper for
172 the description of casualties that occurred in Switzerland and abroad. The casualties from abroad were
173 included to get more search hits. We then shortened the list to the most relevant keywords. Where possible,
174 we combined the keywords for the different processes. For example, we searched for casualties caused by
175 “flood OR inundation OR landslide OR landslip OR mudslide OR mudflow” combined with “dead OR
176 casualty OR death OR human life OR drown OR killed OR dead body OR buried”. An overview of the



177 keywords and the combinations used is given in the supplementary material. With these keyword
178 combinations, we found most cases (roughly 90%) already stored in the Swiss flood and landslide database
179 for the selected validation period 1985-1995.

180

181 In a next step, we used the selected keywords to scan the newspaper for the remaining years (1946-1977,
182 1988-2015). For the years where we already had data from the Swiss flood and landslide database for the
183 processes flood, landslide, debris flow and rockfall, we restricted the search to the processes not already
184 covered. The search for fatalities produced up to 300 hits per year. We initially viewed all hits, but many
185 were not relevant for our research (e.g. fatalities abroad). Further, the digital scan of the newspaper was
186 sometimes of bad quality, which resulted in the misspelling of words and thus influenced our search
187 because not all of our keywords were found. In addition, some gaps exist in the digital archive of the NZZ
188 (e.g. 04. – 15.08.1978).

189

190 For each casualty found, a database entry was made. The following information describing the fatal
191 accident and the victim was stored: name of municipality, canton, date, time, coordinates, description of the
192 event, age, gender, locality (i.e. in or around a building, on a transportation route, in open terrain, in a
193 stream channel, on a lake), mode of transport (on foot, by bicycle, in vehicle, by public transport, by boat,
194 by ski), activity (work, leisure time), and data source. For most of the above-mentioned categories, the
195 quality of the information was also assessed. In doing so, we distinguished between two types of
196 information quality: (i) a concise statement describing a certain characteristic of the event (certain); and (ii)
197 an indication of a characteristic that we deduced based on the available information (probable). In contrast,
198 if no information was available to describe certain aspects of a fatal incident, those characteristics were
199 considered unknown.

200 **3.4 Natural hazard processes considered in the new database**

201 In the present study, we assigned the fatalities found in our search (or adopted from the flood and landslide
202 damage database or the destructive avalanche database) to the following seven process categories:

203

- 204 • Flood: includes people drowned in flooded or inundated areas or carried away in streams under high-
205 water conditions.
- 206 • Landslide: includes people killed by landslides, hillslope debris flows and channelized debris flows.
207 Because debris flows were often not identified as such in the press media (especially in the first half of
208 our study period), we decided to add debris flow fatalities to the category of landslide processes. This
209 approach has been applied previously, for example by Guzzetti (2000).
- 210 • Rockfall: includes people killed by rockfall.
- 211 • Lightning: includes all people who died after being struck by lightning.



- 212 • **Windstorm:** includes people killed by falling objects or trees during very strong wind conditions and
213 people who drowned in lakes because their boat capsized during such conditions.
- 214 • **Avalanche:** includes people killed in snow avalanches (except roof avalanches, see below).
- 215 • **Other:** includes all people killed by hazard processes that are not frequent in Switzerland (e.g. ice
216 avalanches, earthquakes, lacustrine tsunamis, roof avalanches). Most of the fatalities assigned to this
217 process type were caused by the 1965 Mattmark ice avalanche.
- 218
- 219 Fatalities due to forest fires did not occur during our study period, and people who died during
220 meteorological heat waves were not included. Overall, we considered only casualties where people did not
221 expose themselves to a considerable danger on purpose or wilfully. For example, we excluded loss of life
222 due to high-risk sports (e.g. canoeing and river surfing during floods) and other outdoor activities in
223 potentially dangerous environments, such as canyoning, mountaineering and rock climbing. We also
224 excluded popular snow sports experienced outside of ski resorts, such as freeriding and alpine touring, that
225 have been described elsewhere (e.g. Techel and Zweifel, 2013; Schweizer and Lutschg, 2001). Further, we
226 only included cases where the process directly induced a casualty or an action that led to death. For
227 example, we did not consider cases where a forest ranger was killed during forest clearing operations after a
228 windstorm or where a firefighter was killed in a flooded basement due to an electric shock.

229 **4. Results**

230 **4.1 Types of natural hazard processes associated with fatalities**

231 Our newly compiled database includes reports on 1023 fatalities associated with natural hazard processes in
232 Switzerland during the period from 1946 to 2015 (Table 1). This result corresponds to an average of 14.6
233 fatalities per year. More than one third of all fatalities (378 deaths) were caused by snow avalanches during
234 winter and spring. The second most frequent cause of loss of life was lightning (16.0%), followed by flood
235 (12.1%) and windstorm (10.3%). Landslides and rockfall events each represented less than 10% of the total
236 number of fatalities in Switzerland. Processes that caused sporadic deaths included an earthquake (3
237 deaths), a lacustrine tsunami (1) and a roof avalanche (1). The worst incident, in terms of the number of
238 fatalities involved, that occurred during our 70-year study period was the catastrophic 30 August 1965 ice
239 avalanche, which broke off at the terminus of the Allalin Glacier in the canton of Valais, destroyed the
240 Mattmark Dam construction site and killed 88 people. This incident was the only deadly ice avalanche
241 event we considered in the database (and is included in the category *other* processes, Table 1).

242 **4.2 Temporal distribution of natural hazard fatalities in Switzerland**

243 **4.2.1 Annual distribution of fatalities**

244 The annual number of natural hazard fatalities in Switzerland during our 70-year study period ranged from
245 two (in five years and most recently in 2010) to 112 (in 1951; Figure 2). The resulting median over the



246 entire period was 9.0 deaths per year, which is below the mean value of 14.6 and highlights the large
247 influence of severe multi-fatality events (see also section 5.2). While two years had an annual number of
248 deaths greater than 100, a total of five years exceeded the value of 33.2 (mean plus one standard deviation).
249 The annual number of events ranged from one (in 1995) to 45 (in 1951), with a median over the study
250 period of 7.0 and a mean value of 9.1.

251

252 The number of people killed by natural hazards in the last 70 years showed a clear decrease over time
253 (Figure 2). The downward trend in the total number of annual fatalities is statistically significant (Mann-
254 Kendal test: $\tau = -0.42$, 2-sided P-value = $3.35e-7$; Linear Regression Model: 2-sided P-value = 0.001).
255 This pattern is confirmed when the total number of deaths during the first 35 years of the study period (747)
256 is compared with the value for the second 35 years (276). Thus, nearly three times as many people were
257 killed by natural hazard processes from 1946 to 1980 than from 1981 to 2015. Further, only three years
258 after 1981 exhibited a number of fatalities larger than the mean value for the full 70-year period: 1985,
259 1999 and 2000. The decrease in natural hazard fatalities over the 70-year period is also apparent in the
260 number of fatalities per decade (Figure 3). On average, nearly three times as many people died in accidents
261 during each of the first three decades of the study period as during each of the last four decades.

262

263 The temporal distributions of victims of specific hazard types showed a distinct decrease for lightning and
264 avalanches only (Figures 3 and 4). The trend is statistically significant for avalanches (Mann-Kendal test:
265 $\tau = -0.30$, 2-sided p-value = 0.005; Linear Regression Model: 2-sided p-value = 0.0) and lightning
266 (Mann-Kendal test: $\tau = -0.28$, 2-sided p-value = 0.008; Linear Regression Model: 2-sided p-value =
267 0.014). For both process types, around four times more fatalities were recorded in the first half of the study
268 period than in the second half. Interestingly, during the last 15 years, the database revealed only seven
269 avalanche fatalities, resulting in an average for this most recent period that is ten times smaller than the
270 overall mean value. In a qualitative sense, only deaths due to landslide processes seem to have increased
271 slightly over the 70-year period. However, this impression is was strongly influenced by the large number
272 of fatalities (16) that occurred during the severe October 2000 event in the canton of Valais, when 13
273 people died in the Gondo landslide.

274

275 There were several years in the data set of each natural hazard type when no fatal incidents were reported
276 (Figure 4). The three hazard types for which at least one fatality was reported in most years during the
277 study period are lightning (49 years), avalanches (48 years) and floods (48 years). While at least one
278 fatality associated with windstorm and rockfall events occurred in 40 and 37 years, respectively, fatal
279 accidents related to landslide processes occurred only in one third of the investigated years. Even though
280 only one deadly ice avalanche happened between 1946 and 2015, this event was responsible for more
281 fatalities than all rockfall or all landslide incidents.

282



283 Normalization of fatality data by population resulted in a clearly declining annual fatality rate (Figure 5).
284 We found an annual average rate of 3.9 deaths per million persons for the first 35 years of the study period
285 and a rate of 1.1 for the second 35 years. The yearly mean for the whole period is 2.5 victims per million
286 persons. A very distinct decrease in the fatality rate from the first to the second half of the study period can
287 be seen for the processes lightning (0.7 to 0.14) as well as avalanche (1.63 to 0.29), and to a slightly lesser
288 extent for the processes flood (0.41 to 0.18), rockfall (0.31 to 0.10) and windstorm (0.30 to 0.19).

289 4.2.2 Monthly distribution of fatalities

290 The monthly distribution of natural hazard fatalities from 1946 to 2015 showed two distinct peaks, one in
291 summer and one in winter (Figure 6). The first peak was due to the seasonal distribution of classic “summer
292 processes” such as lightning, floods and, to a lesser extent, also landslides and rockfall incidents, which
293 occur most frequently in June, July and August. Additionally, the catastrophic ice avalanche event in 1965
294 contributed considerably to the establishment of August as the month with most loss of life (207 fatalities).
295 The winter peak was largely caused by avalanches, the most fatal process type in Switzerland, which
296 accounted for 242 of the overall 280 deaths in the months of January (135 avalanche related deaths out of
297 145 total deaths) and February (105 avalanche deaths/135 total deaths). The months of March, April and
298 May in spring and September through December in autumn and early winter exhibited relatively low
299 fatality numbers, i.e. below 60. The month with the fewest deaths related to natural hazard processes was
300 November, when a total of 22 deaths occurred during the last 70 years. This corresponds to a fatality rate
301 roughly one order of magnitude smaller than the rate in August.

302

303 These seasonal patterns resulted in a high percentages of fatalities in summer (June, July and Aug.; 41.7%)
304 and winter (Dec., Jan. and Feb.; 32.2%). In contrast, spring (Mar., Apr. and May; 16.0%) and autumn
305 (Sept., Oct. and Nov.; 10.1%) displayed low percentages. While 85.4% of lightning deaths and 67.7% of
306 flood deaths occurred in summer, 70.6% of avalanche victims were killed in winter and 24.9% in spring. In
307 autumn, only fatalities by landslides show an relatively high percentage (39.2%).

308 4.2.3 Natural hazard fatalities classified by time of day

309 Based on information on the fatality event time, we assigned the cases to four different time periods:
310 morning (06:00-11:59 local standard time), afternoon (12:00-17:59), evening (18:00-23:59) and night
311 (00:00-05:59). Most of the fatalities occurred in the afternoon (39%), followed by the evening (23%), the
312 morning (17%) and the night (11%). For ten percent of the fatalities, no exact event time could be
313 determined (Figure 7). Fatalities due to lightning strikes, floods or windstorms occurred mostly in the
314 afternoon and in the evening, whereas no characteristic time period could be distinguished for the
315 occurrence of fatalities due to avalanches, rockfall events and landslides. However, avalanches and
316 landslide processes showed a considerably higher percentage of deaths during the night (roughly 20%)
317 compared to the other processes (less than 10%).



318 **4.3 Spatial distribution of natural hazard fatalities in Switzerland**

319 Fatalities caused by natural hazard processes were relatively homogenously distributed over the entire
320 territory of Switzerland (Figure 8a). There are a few, mostly small, areas where very few or even no deaths.
321 Multi-fatality events were much more frequent in the mountainous parts of the country (Alps) compared to
322 the Swiss Plateau and the hilly Jura.

323

324 As can be expected, fatalities resulting from avalanches occurred mainly in the high-alpine parts of
325 Switzerland. A few accidents were reported from the western and central Prealps (transitional areas to the
326 high-alpine part of Switzerland). In contrast, no fatal incidents relating to avalanches occurred in the hilly
327 Jura and in the Swiss Plateau region. Clusters are present, e.g. in the area around Andermatt in the southern
328 part of the canton Uri (UR) and around Davos in the canton Grisons (GR). Also, a notably large number of
329 multi-fatality avalanche events is visible in Figure 8a (see also section 5.2). Interestingly, some
330 mountainous but populated regions showed very few or no deaths by avalanches at all. Such areas are
331 located in several parts of Grisons (GR) and Valais (VS), as well as in parts of north-eastern Ticino (TI).

332

333 Most of the fatalities caused by landslide processes were recorded in the Alps and Prealps, and a few were
334 documented in the Swiss Plateau. The largest number of landslide deaths occurred in the canton Valais
335 (VS), and the worst landslide event in the database (with 13 fatalities) occurred in Gondo (VS) in October
336 2000. Similar to landslide accidents, fatal rockfall accidents predominantly took place in the central Alps
337 and Prealps, e.g. in the cantons of Valais, Grisons, Vaud and Uri. A limited number of these fatalities
338 occurred in the Jura and the Swiss Plateau.

339

340 Flood fatalities were rather homogenously distributed over Switzerland and occurred in almost all
341 regions/cantons during the last 70 years. Still, there were considerably more cases (some of them multi-
342 fatality incidents) in the Swiss Plateau than in any other Swiss region. The fewest deaths by floods occurred
343 in the region Jura and the canton Valais. Some areas, such as the canton of Neuchâtel, the eastern part of
344 canton Grisons and south-eastern Valais exhibited no flood fatalities at all.

345

346 Lightning fatalities occurred all over Switzerland, and by far most of them took place on the Swiss Plateau.
347 However, some high-mountain areas in several different parts of Switzerland exhibited very few lightning
348 related deaths (e.g. in cantons Grisons, Valais, Uri and Ticino). Windstorm related fatalities were also
349 mainly registered along the Swiss Plateau. This region exhibited more than half of all windstorm related
350 fatalities. Some cases occurred in the Jura, the Prealps and on the border to the Alps. In contrast, very few
351 wind related fatalities occurred in the large alpine cantons Grisons, Valais and Ticino. Areas around lakes
352 (Lake Zurich, Lake Neuchatel, Lake Geneva, Lake Constance) had clusters of windstorm fatalities due to a
353 considerable number of capsizing accidents.

354



355 The spatial distribution of natural hazard fatalities for the different process types was confirmed by the
356 altitude data for each event. For roughly three quarters of the fatalities, we were able to define the exact
357 altitude at which the victim died (for slightly less than 25% of the fatalities the accident altitude was
358 estimated). While median altitude was highest for avalanche and rockfall victims (1467 and 1082 m a.s.l.,
359 respectively), landslide and lightning victims were killed at intermediate altitudes (820 and 692 m a.s.l.,
360 respectively). In contrast, flood and windstorm fatalities were mainly registered at low altitudes
361 representative for the Swiss Plateau (median values of 559 and 431 m a.s.l., respectively).

362

363 Figure 8b shows the overall number of fatalities per Swiss canton. Most deaths occurred in the canton of
364 Valais (VS, 272), followed by Grisons (GR, 193), Bern (BE, 100), Ticino (TI, 71), Uri (UR, 60), Vaud
365 (VD, 44) and St. Gallen (SG, 43). Normalizing the number of deaths to canton population (deaths per year
366 and per one million persons) shows that cantons in the Alps with a medium to very low population density
367 had especially higher fatality values. The relatively small and sparsely populated canton of Uri showed the
368 highest normalized value (UR, 27.4), followed by Valais (VS, 19.1), Grisons (GR, 18.2), Appenzell
369 Innerhoden (AI, 8.7), Obwalden (OW, 5.8), Nidwalden (NW, 5.7), Ticino (TI, 4.7) and Glarus (GL, 4.6).
370 At the other end of this list were the urban cantons of Basel-Stadt (BL, 0.08) and Geneva (GE, 0.26)
371 located in the regions Jura and Swiss Plateau.

372 **4.4 Natural hazard fatalities classified by age and gender**

373 The age of victims was provided for more than 93% of the natural hazard fatalities reported in our database
374 (954 out of 1023). Overall, the age groups with the highest death toll were the 20-29 year-old (172
375 fatalities) and 30-39 year-old (177 fatalities) groups, followed by the 40-49 year-old group with 151
376 fatalities (Table 2). These values correspond to a combined 500 victims (or 48.9%) between 20 and 49
377 years of age. While children and teenagers (0-19) accounted for 20.9% of natural hazard deaths, people
378 above 60 years of age made up only 12.6%.

379

380 When focusing on age related patterns for the individual process types, several discrepancies from the
381 overall numbers attract attention. For example, about one fifth of all flood victims were younger than ten
382 years of age, compared to 7.5% for all hazard processes (Table 2). In addition, the percentage of victims
383 over 60 years of age was more than twice as high for flood fatalities (25.8%) as for all fatalities. Lightning
384 rarely killed young children (2.4% in the 0-9 year-old age group) but seems to particularly affect teenagers.
385 The 10-19 year-old age group constituted 23.2% of all lightning victims, which is much higher than the
386 value for all processes (13.4%). Finally, windstorm victims below 20 years of age were underrepresented
387 (10.5%) compared to the full data set (20.9%).

388

389 Gender was provided for practically all (99.5%) natural hazard fatalities in our database. Summarized for
390 all process types, more than three quarters of all natural hazard victims were males, indicating that males



391 were approximately three times as likely to become fatality victims as females (Table 1). Male fatalities
392 greatly outnumbered female deaths for every process category (percentage of male fatalities between 74.2
393 and 79.3%), with the exception of landslides and processes in the *other* category (including ice avalanches).
394 While the proportions of male and female victims of landslides were quite similar (55.4 and 44.6%,
395 respectively; Table 1), the victims killed by the ice avalanche of 1965, which destroyed a dam construction
396 site, were practically all males (96.6%). Expressed differently, female landslide deaths represented 13.6%
397 of all female natural hazard fatalities, whereas the same value for males was only 5.3%. Correspondingly,
398 processes classified as *other* were the cause of death in 11.0% of male victims in our records, while this
399 value was negligible for female victims (2.9%).

400

401 Regarding the ages of victims, the number of male victims in natural hazard fatalities was considerably
402 larger than the number of female fatalities within every age group (Table 2). This pattern is accentuated for
403 young adults between 20 and 39 years of age, where the percentage of male victims was more than 80%,
404 whereas for young children from 0 to 9 years of age the percentage of female victims was highest at 34%.
405 Accordingly, the age distribution of male and female victims of natural hazard processes exhibits a few
406 differences. Whereas 26.4% of female fatalities were younger than 20 years of age, this applied to only
407 19.4% of male victims. In contrast, the percentage of young-adult victims between 20 and 39 years of age
408 was much higher for males (37.2% of all deaths) than for females (25.2%).

409 4.5 Natural hazard fatalities in different accident circumstances

410 Accident circumstances, such as *activity* (work or leisure time), *locality* (on transportation routes, in open
411 terrain, in or around buildings, on a lake, in the immediate vicinity of a stream channel) and *mode of*
412 *transportation* (on foot, in a vehicle, on a boat, on skis, on a bicycle, in public transport) were analysed for
413 the 1023 entries in our database (Table 3). Regarding the victims' activity, we found that 52% of all
414 fatalities occurred during leisure time, 35% occurred during work, and the activity could not be assigned in
415 13% of the cases. The assessment of incident locality revealed that most of the fatalities occurred on
416 transportation routes (33%), in open terrain (14%) or in or around buildings (home 20%, other buildings
417 6%, around buildings 3%). For all fatalities except those in buildings, the mode of transport was
418 determined: 62% of victims were killed whilst on foot, 18% in a vehicle, 7% on a boat, 6% on skis and 1%
419 or less in public transport or on a bicycle.

420

421 Avalanches killed more than twice as many people during leisure time (245) as during work (110). People
422 killed by avalanches during work were mostly located on transportation routes (72), mainly travelling by
423 foot (35) or in vehicles (16). People who died in avalanches during leisure time were usually at home (159)
424 or were travelling on transportation routes (83). Similarly, for floods, windstorms, landslides and rockfall
425 events, fatalities that occurred during leisure time were at least twice as frequent as those that occurred
426 during work. The single hazard event with the largest number of people killed during work was the ice



427 avalanche in Mattmark with 88 deaths (category *other*). People fatally struck by lightning were working in
428 43% of the cases (Table 3).

429

430 Most victims of floods were killed in the stream channel sector (63) and were usually carried along by the
431 high water. Flood related fatalities on transportation routes were also relatively common (31), with 11
432 victims travelling in vehicles, 16 by foot, two by bicycle, one in public transport and one case unclear.
433 Regarding windstorm related incidents, most of the fatalities occurred on lakes with victims located in
434 boats (44). Thirty-four windstorm related fatalities occurred on transportation routes, where 20 victims
435 were killed in vehicles, 13 on foot and one on a bicycle. Loss of life caused by landslide processes occurred
436 mostly in and around buildings (40). Twenty people were killed by landslides whilst on transportation
437 routes, and 11 of these victims were in vehicles, eight on foot and one in public transport. Most people
438 killed by rockfall were on transportation routes (58), of which 30 people were travelling by foot and 27 in a
439 vehicle (one unclear), whereas 14 people were killed by rockfall on open terrain. Most of the lightning
440 fatalities occurred on open terrain (95 victims, of which 90 were moving by foot), in or around buildings
441 (33) or on transportation routes (28 victims, of which 13 were travelling by foot, 10 in or on a vehicle and 5
442 by bicycle).

443 **5. Discussion**

444 **5.1 Data quality**

445 **5.1.1 Completeness of the data set**

446 Several factors influenced the integrity of our data set: (i) Fatal accidents caused by natural hazard
447 processes during the 70-year study period could simply not have been reported in the *Neue Zürcher Zeitung*
448 (NZZ) or in the additional data sources used. (ii) The NZZ is a German written newspaper. The coverage of
449 the news includes all parts of Switzerland (e.g. regarding severe natural hazard events), but there might be a
450 bias towards an underreporting in the other language regions (French, Italian, Rhaeto-Romanic), which
451 represent roughly one third of the population. (iii) For practical reasons, we had to apply a limited number
452 of keywords in our search. Thus, we could have missed reports on natural hazard fatalities in the data
453 sources because our keywords were not used in the respective news coverage. (iv) There were a few small
454 data gaps in our main data source. Some issues of the NZZ were not present in the data portal applied;
455 hence, we possibly missed fatalities that occurred during such periods. (v) The NZZ archive was
456 established by scanning all newspaper issues and applying a character recognition program (with the
457 exception of all new editions available digitally since 1994). This procedure is susceptible to errors
458 whenever the character recognition fails due to insufficient scan quality. We encountered this problem
459 when searching for keywords in the first few decades of the study period, mainly for long keywords. (vi)
460 Finally, media articles sometimes mix up technical terms and thus hazard processes (a problem already
461 discussed in Badoux et al., 2014). For example, we suspect that several fatal debris flows were not exactly



462 identified as such in the media during the first few decades of the study period because this process was not
463 yet commonly understood.

464

465 All in all, we acknowledge that our database for the time period between 1946 and 2015 is not fully
466 complete and that we might have missed a certain number of natural hazard deaths, mainly in the first
467 decades of our study period. Taking into account our success rate for the validation period (see section 3.3),
468 we are confident that we passed over considerably less than 10% of the fatalities that occurred. The main
469 reason for this is that graver events with several deaths were almost certainly reported in the NZZ. Hence,
470 we believe that our database is valuable in its present state.

471 **5.1.2 Quality of the data**

472 The quality of our natural hazard fatality data was assessed by considering the levels of uncertainty
473 associated with the incident characteristics and circumstances. In general, uncertainty was low (Table 4).
474 This finding applies primarily to the date of events, the victims' gender and age, and the locality of the
475 incident (data was labelled as *certain* in 88% or more of the cases). Exact reporting of the time an incident
476 occurred was often lacking, and we had to estimate the event time for more than one third of the fatalities.
477 Data was unavailable in more than 10% of the cases only for the variables event time and victims' activity.
478 Finally, data quality increased in the course of our study period, in that all variables except one (victims'
479 activity) show lower uncertainty for the sub-period between 1981 and 2015.

480 **5.2 The impact of multi-fatality events**

481 A total of 635 natural hazard events with fatal consequences occurred in Switzerland during the study
482 period (Table 5). The most common situation observed in the last 70 years was for one victim to be killed
483 in a natural hazard incident. Roughly 50% of the total number of victims lost their life in one of the 507
484 single-fatality events recorded in the database. While incidents with two or three fatalities occurred 73 and
485 25 times, respectively, 25 incidents registered four to ten fatalities. Only five events caused more than ten
486 deaths each, resulting in a combined 15.7% of the total number of victims in the entire study period (Table
487 5).

488

489 The largest of those five events was the Mattmark ice avalanche of 1965 that killed 88 people. The second
490 and third worst multi-fatality events were both avalanches. The first of these avalanches occurred in
491 February 1970 in Reckingen (canton of Valais) and represents one of the largest avalanche disasters in the
492 Alps of the 20th century (30 deaths). Amongst other damage, the avalanche destroyed a Swiss army barrack
493 and residential buildings, killing 19 officers and 11 civilians. The latter incident with 19 deaths occurred in
494 January 1951 in Vals (canton of Grisons) during the worst avalanche winter in Swiss history (Figures 4 and
495 5).

496



497 Regarding the relative importance of single-fatality events, we detected two distinct categories of natural
498 hazard process types. Flood, rockfall, windstorm and lightning incidents with one victim were responsible
499 for more than 70% of the total fatalities associated with each of these process types. This value was much
500 smaller for avalanches (26.2%) and landslides (31.1%) (Table 5). This distinction is probably related to the
501 fact that fatal victims of both avalanche and landslide process types are more often killed in buildings
502 (around 50% of all cases) than victims of other hazard processes. Affected buildings are likely to be
503 occupied or inhabited by more than one person, and thus, multi-fatality events are more frequent for
504 avalanches and landslides. Lightning was associated with the highest percentage of deaths in single-fatality
505 events in Switzerland (87.8%). This value is only slightly lower than percentages reported for the USA
506 (90.9%, Curran et al., 2000) and Australia (92%, Coates et al., 1993).

507 **5.3 Evolution of fatality numbers during the last 70 years in Switzerland**

508 General attempts to explain the decrease in natural hazard fatalities observed in other countries and globally
509 have been made previously. For example, Goklany (2007) indicated that societies' collective adaptive
510 capacities lead to reduced fatality rates due to extreme weather. For the US, Curran et al. (2000) attributed a
511 decline in lightning related deaths over time to improved medical care, emergency communication and
512 transportation, as well as better awareness of the serious threat posed by lightning. Improved forecasting,
513 process detection and warning systems may have also contributed to the decrease in fatalities (Curran et al.,
514 2000; López and Holle, 1996). Furthermore, fewer people currently work in open fields than in the past,
515 and the expansion of urban areas has provided more buildings and structures to attract lightning away from
516 people (Elsom, 2001).

517

518 A significant reduction in avalanche fatalities in settlements and on transportation corridors since the
519 1970's has been noted throughout the European Alps (e.g. Techel et al., in prep.), as well as in North
520 America (e.g. Page et al., 1999; Jamieson et al. 2010). Explanations for this decrease include (i) large
521 investments into permanent avalanche defence structures, which reduce the potential for catastrophic
522 avalanches (e.g. SLF, 2000); (ii) hazard mapping and risk assessment to evaluate appropriate measures for
523 the protection or closure of avalanche-threatened sections of roads during winter (e.g. Wilhelm, 1997;
524 Margreth et al., 2003); (iii) the preventive artificial release of avalanches (e.g. Stoffel, 2001); (iv) the
525 improved avalanche education of local authorities responsible for avalanche safety (e.g. Bründl et al.,
526 2004); and (v) an improved and more widely distributed avalanche forecast (Etter et al., 2008).

527

528 Many fatalities related to floods and inundations occur because people act imprudently and put themselves
529 in dangerous situations. We assume that about half of all flood deaths can be ascribed to such inappropriate
530 behaviour, for example when victims are carried away by floodwaters or surprised in their home by rapidly
531 intruding surface water (see also section 5.6). Hence, although Swiss flood protection has been developed
532 and refined considerably in the last decades (e.g. BWG, 2001), implying large financial investments, fatal



533 events can only be prevented by such measures to a limited extent. This could partly explain the relatively
534 moderate decrease in flood fatality over our study period. However, it has to be taken into consideration
535 that deaths caused by floods were dramatically reduced since the middle of the 19th century in Switzerland,
536 as showed e.g. in Petrascheck (1989). Still, it will be very important in the future to better inform and train
537 people who regularly stay in or close to flood prone areas. A similar recommendation could be made for
538 windstorms, as fatalities related to these events also often occurred due to negligent behaviour in dangerous
539 situations.

540 **5.4 Demography of fatality data**

541 Our study revealed that male natural hazard fatalities have been much more frequent than female fatalities
542 (75.9% male vs. 23.7% female). This pattern has also been observed in other countries, for example for
543 fatal flood (Ashley and Ashley, 2008; Coates, 1999) and lightning (Singh and Singh, 2015; Navarrete-
544 Aldana et al., 2014; Elsom, 2001; Curran et al., 2000) victims. To explain this striking gender difference,
545 we first need to focus on work related deaths, which represent slightly more than one third of all recorded
546 fatalities (Table 3). A remarkable 93.5% of all natural hazard victims killed at work were men, and this
547 percentage was at least 95% in the four first decades of the study period. This finding is probably mainly
548 due to the fact that (i) during the study period, the ratio of men working full time was considerably higher
549 than the ratio of women working full time, especially in the first half of the period; and (ii) many accidents
550 were associated with occupations that are physically demanding and thus were, and to some extent still are,
551 almost exclusively carried out by men, such as farm labour, forestry work, construction work, road
552 maintenance (e.g. snow clearing) and rescue services. Thus, men have been more involved than women in
553 employment (often involving outdoor work) that puts them at risk of dying in a natural hazard event.

554
555 More than half of all fatalities in our data set occurred during leisure time (Table 3). Of these 536 victims,
556 approximately two thirds were men and one third were women. Obviously, the predominance of male
557 fatalities was not as strong as that observed in work related accidents, but it was still considerable. We
558 assume that the gender difference observed for fatalities during leisure time activities was due to the higher
559 risk perception of women compared to men (e.g. Bubeck et al., 2012; Lindell and Hwang, 2008; Tekely-
560 Yesil et al., 2011). This effect probably leads to a more cautious and less adventurous behaviour of women,
561 which could explain the difference between the number of male and female fatalities. What applies for
562 work might also be valid for recreational activities and it seems that men have a greater disposition towards
563 risk-taking than women. However, a growing recognition of the equality of the genders has led to a greater
564 proportion of women being at risk relative to men (Coates, 1999). This trend is somewhat supported by our
565 data, in that 55.6% of all leisure-time fatalities in the last decade of the study period involved women.



566 **5.5 Effects of location, mode of transport, activity and inappropriate behaviour**

567 The percentage of people who drowned in vehicles was much smaller in Switzerland (17% of all flood
568 victims) compared to values reported in studies of other countries. For example, 77% of flood fatalities
569 were vehicle related in a study about the US state of Texas (Sharif et al., 2015), and 63% were vehicle
570 related in a study of the US as a whole (Ashley and Ashley, 2008). It was suggested that this large number
571 of fatalities occurs because people incautiously try to cross rivers in their vehicles (Sharif et al., 2015).
572 Most of the people in our study were killed while travelling on foot (62%). This percentage includes people
573 who accidentally fell, were swept into the floodwaters, or tried to walk through the floodwaters. We assume
574 that most of these fatalities occurred because of inappropriate behaviour and underestimation of risk and
575 thus could have been prevented. The same could be said for all the lightning deaths in our study. In most
576 cases, the danger was underrated (e.g. people were struck during work on open fields) or people used
577 inadequate shelter (e.g. under trees). For fatalities due to lightning, a clear trend over time away from
578 outdoor worker casualties towards recreational accidents was apparent in our data set and has also been
579 observed elsewhere (López et al., 1995; Coates et al., 1993). Inappropriate behaviour also led to many of
580 the deaths related to windstorm events. Here, most fatalities occurred on lakes due to capsized boats, when
581 the victim(s) underestimated the heavy winds. Further, many victims were struck by falling tree (parts) or
582 other material that was swirling through the air. Regarding avalanche incidents, , most of the fatalities in
583 our database occurred in buildings (185, 49%) because we excluded deaths due to sports like ski touring
584 and free skiing. We assume victims killed in buildings thought they were safe. Similarly, in the landslide
585 process category, most of the fatalities occurred in buildings (54%), suggesting that the inhabitants were
586 surprised and unable to react to the threat.

587 **5.6 Comparison of recent Swiss natural hazard fatality data with historic data**

588 In our data set from Switzerland, less than 1% of all events caused more than 15% of the overall fatalities,
589 and since 1946 no single natural hazard incident killed more than 88 people (section 5.2). Compared to
590 some catastrophic historical events that occurred on Swiss territory, 88 victims is considerable but not
591 exceedingly great. In this section, we briefly address three events that probably represent the most
592 devastating natural hazard incidents of the last 1000 years in Switzerland: an earthquake, a rockslide, and a
593 rockslide/flood wave combination.

594

595 On 18 October 1356 in the region of Basel, an earthquake occurred that is regarded as the strongest
596 historically documented earthquake event in central Europe (Swiss Seismological Service, 2004). The
597 inferred magnitude of the seism lies between 6.5 and 7.0. This event destroyed large parts of Basel, but the
598 overall number of victims remains very uncertain (Fäh et al., 2009) and contemporary sources are sparse.
599 While 300 deaths were associated with this incident in a chronicle from around 1580, miscellanies of the
600 16th century report a maximum figure of 2000 fatalities. However, , the latter number seems highly



601 exaggerated (Fäh et al., 2009). If an identical earthquake occurred today, experts fear it would cause
602 approximately 1500 deaths (Katarisk, www.katarisk.ch).

603

604 Approximately 160 years later, during an intense rainfall period in September 1513, a massive rockslide 10
605 to 20 million m³ in volume failed from Pizzo Magno and blocked the river Brenno at the end of the Blenio
606 valley (canton of Ticino) just upstream of the village of Biasca (Heim, 1932). Due to this damming of the
607 Brenno, a shallow lake with a final length of 5 km was formed and two small villages were submerged.
608 Roughly 20 months after the rockslide, in May 1515, the debris plug eroded and eventually collapsed. A
609 massive surge of debris and water flooded Biasca and swept down the valley of the Ticino to the town of
610 Bellinzona and further to Lago Maggiore (Eisbacher and Clague, 1984; Bonnard, 2011). Approximately
611 600 people were killed and some 400 buildings were destroyed.

612

613 On 2 September 1806, approximately 20 million m³ of material (Eisbacher and Clague, 1984; other sources
614 cite volumes up to 40 million m³) failed on the southern slopes of Rossberg mountain in central
615 Switzerland and subsequently destroyed and buried the villages of Goldau and Röthen, as well as parts of
616 two adjacent hamlets. This so-called Goldau rock avalanche had a runout of about 1000 m and caused the
617 destruction of more than 100 houses, 220 stables and barns, two churches and two chapels, and it killed 457
618 people. Several signs (e.g. tension crack formation and rockfall) predicted a failure several years before the
619 event, but most people did not heed the warning and remained in the hazardous area (Heim, 1932;
620 Eisbacher and Clague, 1984).

621

622 Further rockslides with catastrophic consequences occurred in the last centuries, such as an event in Elm in
623 1881 and an event in Plurs/Piuro (formerly Swiss territory, now Italy) in 1618. The latter event was
624 exceptionally devastating and probably killed more than 2000 people. However, both events were to a large
625 extent man-made, as intensive mining activity crucially destabilized the slopes that ultimately failed.
626 Catastrophic events like the ones addressed above that seem to occur every 100 to 300 years in Switzerland
627 and cause hundreds of victims would greatly change the fatality rates described in this contribution for the
628 worse.

629 **5.7 Comparison of Swiss natural hazard fatality data with data from abroad**

630 The EM-DAT International Disaster Database is a free and searchable source of information on world-wide
631 victims of natural disasters (EM-DAT, www.emdat.be). In that database, we found 21 database entries for
632 Switzerland in our study period, and 329 fatalities associated with natural hazard processes that were
633 considered in our study. Avalanche events led to most of the fatalities recorded in EM-DAT (275),
634 followed by storms (24), landslides (20) and riverine floods (10). A considerable difference from our
635 overall results exists because EM-DAT focuses only on large catastrophic events with at least ten fatalities,



636 100 affected people, a call for international assistance, or the declaration of a state of emergency. This leads
637 to an underestimation of total fatalities, a problem also stated by Petley (2012).

638

639 Worldwide, EM-DAT registered a total of 5 million fatalities, including those due to earthquake (1.51
640 million, 30.1%), mass movement (0.06 million, 1.2%; including landslide, avalanche, rockfall and
641 subsidence), flood (2.48 million, 49.2%) and storm (0.98 million, 19.5%) for the period of 1946 to 2015.
642 Normalized by population (UN, Department of Economic and Social Affairs, Population Division, World
643 Population Prospects, the 2015 Revision, <http://esa.un.org>), this results in a mean yearly fatality rate of 19
644 victims per million people (earthquake 4.6, flood 11.4, mass movement 0.2, storm 3.2). This rate is much
645 higher compared to the average annual fatality rate determined in our study for Switzerland (overall 2.5
646 fatalities per million population and year; flood 0.29, landslide 0.16, rockfall 0.20, storm 0.24, lightning
647 0.42, avalanche 0.96, other 0.23; Table 1).

648

649 With the different data collection methods in mind, explanations for these differences could be that most
650 events that occurred in Switzerland during our study period did not cause more than ten fatalities (all but
651 five events, Table 5). Due to the geographical location of the study area, some very deadly hazard
652 processes, such as tropical storms, did not occur. Further, even though severe earthquakes are possible in
653 Switzerland and have been observed historically (see section 5.6), only three such fatalities (all in 1946)
654 were registered. Further, Switzerland exhibits a considerable network of protection measures and a well-
655 developed risk management system (see section 5.3). These tactics probably additionally help to keep
656 fatality rates low in comparison to other regions of the world, particularly less privileged ones (e.g. Bründl
657 et al., 2004; Lateltin et al., 2005).

658

659 Higher flood fatality rates compared to Switzerland have been reported for Texas (1.08 fatalities per million
660 population per year) as well as several other US states (Sharif et al., 2015) and also for India (1.5; Singh
661 and Kumar, 2013). Coates (1999) found a large decrease in the flood fatality rate in Australia, from 239.8
662 in the 1800's to 0.4 in the 1990's. Also, a decreasing frequency of fatalities due to landslides was found in
663 Italy, with 1.8 fatalities per million population per year in 1950 and 1.4 in 1999 (Guzetti, 2000). The
664 average annual rate of fatalities due to lightning we found for Switzerland was higher than that reported for
665 India (0.25; Singh and Singh, 2015) and similar to that reported for the USA (0.42; Curran et al., 2000).
666 The decrease in lightning related fatalities we found over the last 70 years has also been observed in the
667 USA (López and Holle, 1996) and in England and Wales (Elsom, 2001). In a comparative global summary
668 of published lightning fatality estimates, Singh and Singh (2015) listed a value for 19th century Switzerland
669 of 6.0 deaths per million population per year, which is more than ten times the value estimated in our study.
670 Even though this figure was based on only two years of data (1876-1877), it illustrates the various
671 improvements (e.g. better medical care, increased awareness) and the socio-economic changes that have
672 occurred in Switzerland over the past 150 years.



673 **5.8 Comparison of natural hazard fatality data with data from other accidental deaths**

674 In his recent contribution, Goklany (2007) assessed death and death rates due to extreme weather events,
675 such as extreme heat, extreme cold, floods, lightning, tornados and hurricanes. This analysis indicated that
676 globally, as well as for the US, the aggregate contribution of extreme weather events to overall mortality is
677 relatively small, ranging from 0.03% (globally) to 0.06% (US). More specifically, the global contribution of
678 fatalities due to extreme weather events to all accidental deaths is also quite small (0.4%). For example,
679 based on EM-DAT data for 2000-2006 and World Health Organization data for 2002, Goklany (2007)
680 showed that, while roughly 20,000 people per year die during extreme weather events, many more are
681 killed in road traffic accidents (approx. 1.2 million people in 2002).

682

683 The natural hazard processes considered in the study mentioned above are not exactly the same as in the
684 present study (e.g. heat waves were not considered here and mass movements probably were not included
685 in Goklany, 2007) and the two study periods differ. Nevertheless, Goklany's point also applies to our Swiss
686 analysis: fatality and fatality rates from the different hazard processes studied in the present paper are
687 relatively low. A comparison of our data with Swiss road and railroad accident fatality data (Swiss
688 Statistics, www.bfs.admin.ch) confirms the ratio suggested above at the global level. For the same 70-year
689 time frame from 1946 to 2015, a total of 64,561 people died on Swiss roads during traffic accidents. This
690 corresponds to an average value of 922 fatalities per year, with a maximum of 1773 deaths in 1971 and a
691 minimum of 243 deaths in 2014. Thus, on average for our study period, more than sixty times as many
692 people were killed in traffic accidents than by natural hazards. Swiss railroad fatalities also clearly
693 outnumbered natural hazard related fatalities, although to a lesser extent than traffic fatalities (4871 victims
694 from 1946 to 2014, corresponding to roughly five times the number of natural hazard related deaths). Note
695 that both road and railroad fatality numbers show a distinct decrease in Switzerland since the 1970s, similar
696 to the natural hazard fatality data presented here (Figs. 3 and 5).

697

698 Comparing the presented fatality numbers with those of recreational accidents in mountainous terrain,
699 which were not considered in our study, shows similar patterns (see section 3.4). For instance, data from
700 the Swiss Alpine Club (SAC, www.sac-cas.ch) show that mountaineering accidents (e.g. mountaineering,
701 hiking, climbing, canyoning) caused by lightning and rockfall led to 62 fatalities from 2000 to 2013,
702 compared to 21 fatalities in our database for the same two processes (with six fatalities appearing in both
703 data sources). Comparable patterns exist for avalanche fatalities: during the last twenty years (1995/96-
704 2014/15), 15 times more people lost their life during recreational activities in unsecured backcountry terrain
705 than in settlements or on transportation corridors in Switzerland (Techel et al., 2015). On a larger spatial
706 scale covering the entire European Alps, this proportion is even more pronounced (a factor of
707 approximately 30 for the 15 years from 2000/01 to 2014/15; Techel et al., in prep.). In the vast majority of
708 cases, victims in unsecured terrain triggered the avalanche themselves (e.g. Schweizer and Lütschg, 2001),
709 as opposed to fatalities caused by avalanches in settlements and on transportation routes, where most



710 avalanches released naturally (85% of the avalanche victims reported in the present study were killed by
711 naturally triggered events).

712 **6. Conclusions**

713 In this study, we compiled data from the Swiss flood and landslide database, the destructive avalanche
714 database, and information collected in an in-depth newspaper search to establish a new database of fatalities
715 caused by natural hazard processes in Switzerland. For a 70-year period from 1946 to 2015, we were able
716 to assemble detailed data on 635 events during which 1023 people were killed by processes we summarized
717 into seven hazard types (flood, landslide, rockfall, lightning, windstorm, avalanche, and *other* processes).
718 Fatalities that occurred in connection with high-risk sports or certain popular summer and winter outdoor
719 sport activities were not considered. Snow avalanches claimed 378 victims and clearly represent the
720 deadliest natural hazard process in Switzerland. With 164 deaths, less than half as many fatalities were
721 caused by lightning. Floods, windstorms, rockfall events and landslides killed 124, 105, 85 and 74 people,
722 respectively.

723

724 Natural hazard fatalities were considerably variable over time. The number of people who died in one
725 single year varied by one to two orders of magnitude. In 1951 and 1965, fatal events resulted in 112 and
726 108 deaths, respectively, whereas five years had only two fatalities each. For the 70-year study period, the
727 average and median number of people who died due to natural hazards amounted to 14.6 and 9.0,
728 respectively. Annual loss of life data showed a decrease over time, which was primarily induced by a
729 marked decrease in deaths due to avalanches and lightning strikes. The reduction in avalanche fatalities in
730 settlements and on transportation routes is a trend that has also been observed in other European countries
731 and elsewhere. The decrease is due to improvements in both technical (defence structures, preventive
732 artificial release) and organizational (e.g. hazard mapping, emergency planning) measures and to
733 significant progress in avalanche education and forecasting. A reduction in lightning victims during the last
734 century also occurred in many other countries around the world. In Switzerland, the main reasons for this
735 distinct decrease might be that today fewer people work outdoors and there is a much improved awareness
736 of the threat posed by lightning.

737

738 Most people were killed by natural hazard events in summer (JJA, 41.7% of fatalities) and winter (DJF,
739 32.2%). Accordingly, the four months with the largest number of victims were August (20.2%), January
740 (14.2%), February (13.2%) and July (12.9%). While the summer peak mainly occurred due to flood and
741 lightning events (together with one catastrophic ice avalanche in August 1965), the winter peak was caused
742 by snow avalanche incidents. Furthermore, almost two thirds of the fatalities took place in the afternoon
743 and evening.

744



745 Natural hazard fatalities were quite homogeneously distributed over Switzerland. However, mountainous
746 parts of the country (Prealps, Alps) were somewhat more prone to fatal events compared to the Swiss
747 Plateau and the Jura. The reason for this is that avalanche fatalities, and to a slightly lesser extent rockfall
748 and landslide fatalities, occur mainly in the alpine parts of Switzerland. In contrast, deadly events
749 associated with floods and lightning were observed in practically all regions of Switzerland, with a definite
750 maximum occurring along the Swiss Plateau. Finally, windstorm related fatalities were mostly observed on
751 the Swiss Plateau, especially on lakes.

752

753 The age groups with the largest number of natural hazard victims were the 20-29 and 30-39 year-old groups
754 (172 and 177, respectively), and almost 50% of all victims were between 20 and 49 years of age. Young
755 children (0-9 years of age) were the age group that was most underrepresented in the fatality data compared
756 to the Swiss age distribution. Three quarters of all fatalities were men, and men outnumbered women in all
757 process types except landslides. We assume that this large gender difference was strongly influenced by
758 two factors: first and probably more importantly, virtually all work related fatality incidents involved
759 physically difficult occupations that put workers at risk and where the majority of workers are men; second,
760 we speculate that women have a considerably higher risk perception compared to men and that,
761 accordingly, men have a greater disposition towards risk taking than women. Both of these points are
762 (probably) especially relevant for the first half of the study period.

763

764 Large catastrophic events with several hundreds of fatalities have occurred in Switzerland in the last 1000
765 years (e.g. Basel earthquake of 1356, Goldau rock avalanche of 1806), but not during the period studied
766 here. Apart from the tragic Mattmark ice avalanche of 1965 that killed 88 people, only one landslide and
767 three avalanche events caused more than ten victims in the period from 1946 to 2015. Together, these five
768 incidents led to 161 deaths, which correspond to 15.7% of all fatalities in the data set. Hence, single-fatality
769 events (that account for approximately half of the total natural hazard deaths) and events with up to a few
770 victims strongly influence the natural hazard fatality statistics in the recent past. For some process types,
771 such as lightning and rockfall, this influence is particularly strong. When compared with natural hazard
772 fatality rates in other countries or with accidental deaths from other causes in Switzerland, the fatality
773 numbers presented here are quite low. For example, traffic accidents kill an average of approximately 60
774 times more people than natural hazard events. Nevertheless, we think that current annual natural hazard
775 fatality numbers can still be further reduced by investing in and further developing both structural and
776 organizational (e.g. alarm systems, emergency planning, hazard awareness creation) protection measures.
777 The data set (and analysis) presented here can be used by decision makers at different political levels
778 (municipal, cantonal and federal authorities) to plan and implement such measures.

779



780 **Acknowledgements**

781 We are very grateful to G. Antoniazza, who helped screen many newspaper articles to establish this
782 database. We thank J. Keel, of the Swiss Media Database for excellent support throughout our newspaper
783 search. Furthermore, the authors would like to thank D. Rickenmann, B. McArdell, C. Berger, C. Rickli, E.
784 Maidl, M. Buchecker (all at WSL), U. Mosimann (Swiss Alpine Club), and F. Haslinger (Swiss
785 Seismological Service) for insightful discussions and K. Liechti (WSL) for support with data analysis.
786 Finally, we are grateful to staff at the Federal Office for the Environment (FOEN), especially R. Loat and
787 G. R. Bezzola, for their considerable contribution to the maintenance of the Swiss flood and landslide
788 damage database. M. Dawes is acknowledged for improving the quality of the manuscript.

789 **References**

- 790 Ando, M., Ishida, M., Hayashi, Y., Mizuki, C., Nishikawa, Y., and Tu, Y.: Interviewing insights regarding
791 the fatalities inflicted by the 2011 Great East Japan Earthquake, *Natural Hazards and Earth System*
792 *Sciences*, 13, 2173–2187, doi:10.5194/nhess-13-2173-2013, 2013.
- 793 Ashley, S.T. and Ashley, W.S.: Flood fatalities in the United States, *Journal of Applied Meteorology and*
794 *Climatology*, 47: 805-818, doi:10.1175/2007JAMC1611.1, 2008.
- 795 Ashley, W.S.: Spatial and temporal analysis of tornado fatalities in the United States: 1880–2005, *Weather*
796 *and Forecasting*, 22, 1214-1228, doi:10.1175/2007WAF2007004.1, 2007.
- 797 Ashley, W.S. and Black, A.W.: Fatalities associated with nonconvective high-wind events in the United
798 States, *Journal of Applied Meteorology and Climatology*, 47(2), 717-725,
799 doi:10.1175/2007JAMC1689.1, 2008.
- 800 Auken, M.R., Sparks, R.S.J., Siebert, L., Crowther, H.S., and Ewert, J.: A statistical analysis of the global
801 historical volcanic fatalities record, *Journal of Applied Volcanology*, 2(1), 2, doi:10.1186/2191-5040-2-
802 2, 2013.
- 803 Badoux, A., Andres, N., and Turowski, J.M.: Damage costs due to bedload transport processes in
804 Switzerland, *Natural Hazards and Earth System Sciences*, 14, 279-294, doi:10.5194/nhess-14-279-2014,
805 2014.
- 806 Black, A.W. and Ashley, W.S.: Nontornadic convective wind fatalities in the United States, *Natural*
807 *Hazards*, 54, 355–366, doi:10.1007/s11069-009-9472-2, 2010.
- 808 Bonnard, C.: Technical and human aspects of historic rockslide dammed lakes and landslide dam breaches,
809 in: *Natural and Artificial Rockslide Dams*, edited by: Evans, S.G., Hermanns, R.L., Strom, A., and
810 Scarascia-Mugnozza, G., *Lecture Notes in Earth Sciences*, 133, Springer-Verlag, Berlin Heidelberg,
811 Germany, 101-122, 2011.
- 812 Borden, K.A. and Cutter, S.L.: Spatial patterns of natural hazards mortality in the United States,
813 *International Journal of Health Geographics*, 7(64), doi:10.1186/1476-072X-7-64, 2008.



- 814 Bründl, M., Etter, H.J., Steiniger, M., Klingler, C., Rhyner, J., and Ammann, W.: IFKIS - a basis for
815 managing avalanche risk in settlements and on roads in Switzerland, *Natural Hazards and Earth System*
816 *Sciences*, 4, 257–262, doi:10.5194/nhess-4-257-2004, 2004.
- 817 Bubeck, P., Botzen, W.J.W., and Aerts, J.C.J.H.: A review of risk perceptions and other factors that
818 influence flood mitigation behavior, *Risk Analysis*, 32(9), 1481-1495, doi: 10.1111/j.1539-
819 6924.2011.01783.x, 2012.
- 820 BWG: Hochwasserschutz an Fließgewässern, Wegleitung 2001, Bundesamt für Wasser und Geologie,
821 Biel, Switzerland, 72 pp., 2001 (in German).
- 822 Chowdhury, A., Mushtaque, R., Bhuyia, A.U., Choudhury, A.Y., and Sen, R.: The Bangladesh cyclone of
823 1991: Why so many people died, *Disasters*, 17(4), 291-304, 1993.
- 824 Coates, L.: Flood Fatalities in Australia, 1788-1996, *Australian Geographer*, 30(3), 391-408,
825 doi:10.1080/00049189993657, 1999.
- 826 Coates, L., Blong, R., and Siciliano F.: Lightning fatalities in Australia, 1824–1991, *Natural Hazards*, 8(3),
827 217-233, doi:10.1007/BF00690909, 1993.
- 828 Curran, E.B., Holle, R.L., and López, R.E.: Lightning casualties and damages in the United States from
829 1959 to 1994, *Journal of Climate*, 13(19), 3448-3464, 2000.
- 830 Czajkowski, J., Simmons, K., and Sutter, D.: An analysis of coastal and inland fatalities in landfalling US
831 hurricanes, *Natural Hazards*, 59, 1513–1531, doi:10.1007/s11069-011-9849-x, 2011
- 832 Di Baldassarre, G., Montanari, A., Lins, H., Koutsoyiannis, D., Brandimarte, L., and Blöschl, G.: Flood
833 fatalities in Africa: From diagnosis to mitigation, *Geophysical Research Letters*, 37, L22402,
834 doi:10.1029/2010GL045467, 2010.
- 835 Dlamini, W.M.: Lightning fatalities in Swaziland: 2000–2007, *Natural Hazards*, 50(1), 179-191,
836 doi:10.1007/s11069-008-9331-6, 2009.
- 837 Doocy, S., Rofi, A., Moodie, C., Spring, E., Bradley, S., Burnham, G., and Robinson, C.: Tsunami
838 mortality in Aceh Province, Indonesia, *Bulletin of the World Health Organization*, 85(2), 273-278,
839 2007.
- 840 Dowling, C.A. and Santi, P.M.: Debris flows and their toll on human life: a global analysis of debris-flow
841 fatalities from 1950 to 2011, *Natural Hazards*, 71(1), 203-227, doi:10.1007/s11069-013-0907-4, 2014.
- 842 Eisbacher, G.H. and Clague, J.J.: Destructive mass movements in high mountains: hazard and management,
843 *Geological Survey of Canada Paper 84-16*, Ottawa, Canada, 230 pp., doi:10.4095/120001, 1984
- 844 Elsom, D.M.: Deaths and injuries caused by lightning in the United Kingdom: analyses of two databases,
845 *Atmospheric Research*, 56, 325-334, doi:10.1016/S0169-8095(00)00083-1, 2001.
- 846 EM-DAT: <http://www.emdat.be>, last access: 27 June 2016.
- 847 Etter, H.J., Stucki, T., Zweifel, B., and Pielmeier, C.: Developments in avalanche forecasting and other
848 prevention measures and their potential effect on avalanche fatalities, in: *Proceedings International*
849 *Snow Science Workshop ISSW*, Whistler, Canada, 21-27 September 2008, 628-635, 2008.



- 850 Föh, D., Gisler, M., Jaggi, B., Kästli, P., Lutz, T., Masciadri, V., Matt, C., Mayer-Rosa, D., Rippmann, D.,
851 Schwarz-Zanetti, G., Tauber, J., and Wenk, T.: The 1356 Basel earthquake: an interdisciplinary
852 revision, *Geophysical Journal International*, 178(1), 351-374, doi:10.1111/j.1365-246X.2009.04130.x,
853 2009.
- 854 FitzGerald, G., Du, W., Jamal, A., Clark, M., and Hou, X.-Y.: Flood fatalities in contemporary Australia
855 (1997–2008), *Emergency Medicine Australasia*, 22, 180-186, doi:10.1111/j.1742-6723.2010.01284.x,
856 2010.
- 857 Goklany, I.M.: Death and death rates due to extreme weather events (Global and U.S. trends, 1900-2006),
858 in: *The Civil Society Report on Climate Change*, International Policy Press, London, UK, available at:
859 [http://goklany.org/library/deaths death rates from extreme events 2007.pdf](http://goklany.org/library/deaths%20death%20rates%20from%20extreme%20events%202007.pdf), last access: 27 June 2016,
860 2007
- 861 Guzzetti, F.: Landslide fatalities and the evaluation of landslide risk in Italy, *Engineering Geology*, 58, 89-
862 107, doi:10.1016/S0013-7952(00)00047-8, 2000.
- 863 Heim, A.: *Bergsturz und Menschenleben*, Beiblatt zur Vierteljahresschrift der Naturforschenden
864 Gesellschaft in Zürich, 77(20), 214 pp., 1932 (in German)
- 865 Hilker, N., Badoux, A., and Hegg, C.: The Swiss flood and landslide damage database 1972–2007, *Natural*
866 *Hazards and Earth System Sciences*, 9, 913-925, doi:10.5194/nhess-9-913-2009, 2009.
- 867 Ins. Inf. Inst.: <http://www.iii.org/fact-statistic/catastrophes-global>, last access: 27 June 2016.
- 868 Jamieson, J.B., Haegeli, P., and Gauthier, D.M.: *Avalanche Accidents in Canada, Volume 5 (1996–2007)*,
869 Canadian Avalanche Association, Revelstoke, Canada, 2010.
- 870 Jonkman, S.N.: Global perspectives on loss of human life caused by floods, *Natural Hazards*, 34(2), 151-
871 175, doi:10.1007/s11069-004-8891-3, 2005.
- 872 Jonkman, S.N., Maaskant, B., Boyd, E., and Levitan, M.L.: Loss of life caused by the flooding of New
873 Orleans after hurricane Katrina: analysis of the relationship between flood characteristics and mortality,
874 *Risk Analysis*, 29(5), 676-698, doi:10.1111/j.1539-6924.2008.01190.x, 2009.
- 875 Katarisk: <http://www.katarisk.ch>, last access: 27 June 2016.
- 876 Lateltin, O., Haemmig, C., Raetzo, H., and Bonnard, C.: Landslide risk management in Switzerland,
877 *Landslides*, 2(4), 313-320, doi:10.1007/s10346-005-0018-8, 2005.
- 878 Lindell, M.K. and Hwang, S.N.: Households' perceived personal risk and responses in a multihazard
879 environment, *Risk Analysis*, 28(2), 539-556, doi: 10.1111/j.1539-6924.2008.01032.x, 2008.
- 880 López, R.E. and Holle, R.L.: Fluctuations of lightning casualties in the United States: 1959–1990, *Journal*
881 *of Climate*, 9(3), 608-615, 1996.
- 882 López, R.E., Holle, R.L., and Heitkamp, T.A.: Lightning casualties and property damage in Colorado from
883 1950 to 1991 based on *Storm Data*, *Weather and Forecasting*, 10, 114-126, 1995.
- 884 Margreth, S., Stoffel, L., and Wilhelm, C.: Winter opening of high alpine pass roads - Analysis and case
885 studies from the Swiss Alps, *Cold Regions Science and Technology*, 37(3), 467-482,
886 doi:10.1016/S0165-232X(03)00085-5, 2003.



- 887 MunichRe: Topics Geo (Natural catastrophes 2015 – Analyses assessments, positions), Munich RE,
888 Munich, Germany, 2016.
- 889 Navarrete-Aldana, N., Cooper, M.A., and Holle, R.L.: Lightning fatalities in Colombia from 2000 to 2009,
890 Natural Hazards, 74, 1349–1362, doi:10.1007/s11069-014-1254-9, 2014.
- 891 Noji, E.K.: Natural disasters, Critical Care Clinics, 7(2), 271–292, 1991.
- 892 Page, C.E., Atkins, D., Shockley, L.W., and Yaron, M.: Avalanche deaths in the United States: a 45-year
893 analysis, Wilderness & Environmental Medicine, 10(3), 146–151, 1999.
- 894 Paulikas, M.J. and Rahman, M.K.: A temporal assessment of flooding fatalities in Pakistan (1950–2012),
895 Journal of Flood Risk Management, 8(1), 62–70, doi:10.1111/jfr3.12084, 2015.
- 896 Petley, D.: Global patterns of loss of life from landslides, Geology, 40(10), 927–930,
897 doi:10.1130/G33217.1, 2012.
- 898 Petrascheck, A.: Die Hochwasser 1868 und 1987—Ein Vergleich. Wasser Energie Luft, 81(1-3), 1–8, 1989
899 (in German).
- 900 Rappaport, E.N.: Loss of life in the United States associated with recent Atlantic tropical cyclones, Bulletin
901 of the American Meteorological Society, 81(9), 2065–2073, 2000.
- 902 Röthlisberger, G.: Chronik der Unwetterschäden in der Schweiz, Eidg. Forschungsanstalt WSL,
903 Birmensdorf, Switzerland, Berichte der Eidgenössischen Forschungsanstalt WSL, 330, 122 pp., 1991
904 (in German).
- 905 SAC: [http:// www.sac-cas.ch](http://www.sac-cas.ch), last access: 27 June 2016.
- 906 Schmid, F., Fraefel, M., and Hegg C.: Unwetterschäden in der Schweiz 1972–2002: Verteilung, Ursachen,
907 Entwicklung, Wasser Energie Luft, 96(1-2), 21–28, 2004 (in German).
- 908 Schweizer, J. and Lütschg, M.: Characteristics of human-triggered avalanches, Cold Regions Science and
909 Technology, 33, 147–162, doi:10.1016/S0165-232X(01)00037-4, 2001.
- 910 Sepúlveda, S.A. and Petley, D.N.: Regional trends and controlling factors of fatal landslides in Latin
911 America and the Caribbean, Natural Hazards and Earth System Sciences, 15, 1821–1833,
912 doi:doi:10.5194/nhess-15-1821-2015, 2015.
- 913 Shah, B.V.: Is the environment becoming more hazardous?—A global survey 1947 to 1980, Disasters, 7(3),
914 202–209, doi:10.1111/j.1467-7717.1983.tb00822.x, 1983.
- 915 Sharif, H.O., Jackson, T.L., Hossain, M.M., and Zane, D.: Analysis of Flood Fatalities in Texas, Natural
916 Hazards Review, 16(1), 04014016, doi: 10.1061/(ASCE)NH.1527-6996.0000145, 2015.
- 917 Singh, O. and Kumar, M.: Flood events, fatalities and damages in India from 1978 to 2006, Natural
918 Hazards, 69, 1815–1834, doi:10.1007/s11069-013-0781-0, 2013.
- 919 Singh, O. and Singh, J.: Lightning fatalities over India: 1979–2011, Meteorological Applications, 22, 770–
920 778, doi:10.1002/met.1520, 2015.
- 921 SLF: Der Lawinenwinter 1999, Ereignisanalyse, Eidg. Institut für Schnee- und Lawinenforschung, Davos,
922 Switzerland, 588 pp, 2000 (in German).



- 923 Stoffel, L.: Künstliche Lawinenauslösung, Praxishilfe (2. überarbeitete Auflage), Eidg. Institut für Schnee-
924 und Lawinenforschung, Davos, Switzerland, Mitt. Eidgenöss. Inst. Schnee- Lawinenforsch., 53, 66 pp.,
925 2001 (in German).
- 926 Swiss Statistics: <http://www.bfs.admin.ch/bfs/portal/en/index.html>, last access: 27 June 2016.
- 927 Giardini, D., Wiemer, S., Fäh, D., and Deichmann, N.: Seismic Hazard Assessment of Switzerland, 2004,
928 Swiss Seismological Service, ETH Zurich, Zurich, available at:
929 http://www.seismoatschool.ethz.ch/Hazard_report_2004.pdf, last access: 27 June 2016, 2004.
- 930 Techel, F. and Zweifel, B.: Recreational avalanche accidents in Switzerland: trends and patterns with an
931 emphasis on burial, rescue methods and avalanche danger, in: Proceedings International Snow Science
932 Workshop ISSW, Grenoble, France, 7-11 October 2013, 1106–1112, 2013.
- 933 Techel, F., Zweifel, B., and Marty, C.: Schnee und Lawinen in den Schweizer Alpen, Hydrologisches Jahr
934 2014/15, Eidg. Forschungsanstalt WSL, Birmensdorf, Switzerland, WSL Bericht, 37, 83 pp., 2015 (in
935 German).
- 936 Techel, F., Jarry, F., Kronthaler, G., Mitterer, S., Pavšek, M., and Valt, M.: Avalanche fatalities in the
937 European Alps – long-term trends and statistics, *Submitted for publication to Geographica Helvetica*.
- 938 Tekeli-Yeşil, S., Dedeoğlu, N., Braun-Fahrlaender, C., and Tanner, M.: Earthquake awareness and
939 perception of risk among the residents of Istanbul, *Natural Hazards*, 59, 427-446, doi: 10.1007/s11069-
940 011-9764-1, 2011.
- 941 Tsai, Y.-B., Yu, T.-M., Chao, H.-L., and Lee, C.-P.: Spatial distribution and age dependence of human-
942 fatality rates from the Chi-Chi, Taiwan, earthquake of 21 September 1999, *Bulletin of the Seismological*
943 *Society of America*, 91(5), 1298-1309, doi:10.1785/0120000740, 2001.
- 944 Vranes, K. and Pielke Jr., R.: Normalized earthquake damage and fatalities in the United States: 1900–
945 2005, *Natural Hazards Review*, 10(3), 84-101, doi:10.1061/(ASCE)1527-6988(2009)10:3(84), 2009.
- 946 Wilhelm, C.: Wirtschaftlichkeit im Lawinenschutz: Methodik und Erhebungen zur Beurteilung von
947 Schutzmassnahmen mittels quantitativer Risikoanalyse und ökonomischer Bewertung, Ph.D. thesis,
948 ETH Zurich, Switzerland, 309 pp., available at: <http://dx.doi.org/10.3929/ethz-a-001766318>, last access:
949 27 June 2016, 1997 (in German).
- 950



Table 1: Natural hazard fatalities in Switzerland (1946-2015) classified by gender.

Process type	Total fatalities		Normalized fatalities		Female fatalities		Male fatalities		Gender unclear	Percent deaths		Altitude ^(A) [m a.s.l.]
	[deaths]	[%]	[deaths 10 ⁻⁶ a ⁻¹]	[%]	[deaths]	[%]	[deaths]	[%]		[deaths]	[%]	
Flood	124	12.1	0.29		31	12.8	92	11.9	1	25.0	74.2	559
Landslide	74	7.2	0.16		33	13.6	41	5.3	0	44.6	55.4	820
Rockfall	85	8.3	0.20		21	8.7	64	8.2	0	24.7	75.3	1082
Windstorm	105	10.3	0.24		25	10.3	79	10.2	1	23.8	75.2	431
Lightning	164	16.0	0.42		33	13.6	130	16.8	1	20.1	79.3	692
Avalanche	378	37.0	0.96		92	38.0	285	36.7	1	24.3	75.4	1467
Other	93	9.1	0.23		7	2.9	85	11.0	1	7.5	91.4	2081
All processes	1023	100	2.50		242	100	776	100	5	23.7	75.9	1179

^(A) Note that for snow avalanches only, the altitude of the lowest deposition point was used for technical reasons, which might lead to a slight underestimation in comparison with the other processes.

951
952

953
954
955
956



957 Table 2: Natural hazard fatalities in Switzerland (1946-2015) classified by age groups.

Process type	Age group	Age group										Age un-known	Total
		0-9	10-19	20-29	30-39	40-49	50-59	60-69	70-79	80-89	90-99		
Flood	[deaths]	25	15	10	19	13	8	16	13	3	0	2	124
	[%]	20.2	12.1	8.1	15.3	10.5	6.5	12.9	10.5	2.4	0	1.6	100
Landslide	[deaths]	1	13	6	14	13	10	4	7	1	0	5	74
	[%]	1.4	17.6	8.1	18.9	17.6	13.5	5.4	9.5	1.4	0	6.8	100
Rockfall	[deaths]	4	13	11	11	8	14	15	1	1	0	7	85
	[%]	4.7	15.3	12.9	12.9	9.4	16.5	17.6	1.2	1.2	0	8.2	100
Windstorm	[deaths]	3	8	17	18	13	14	5	7	1	0	19	105
	[%]	2.9	7.6	16.2	17.1	12.4	13.3	4.8	6.7	1.0	0	18.1	100
Lightning	[deaths]	4	38	29	25	24	18	12	7	1	0	6	164
	[%]	2.4	23.2	17.7	15.2	14.6	11.0	7.3	4.3	0.6	0	3.7	100
Avalanche	[deaths]	39	48	74	68	66	44	18	11	2	1	7	378
	[%]	10.3	12.7	19.6	18.0	17.5	11.6	4.8	2.9	0.5	0.3	1.7	100
Other	[deaths]	1	2	25	22	14	3	2	1	0	0	23	93
	[%]	1.1	2.2	26.9	23.7	15.1	3.2	2.2	1.1	0	0	24.7	100
All processes	[deaths]	77	137	172	177	151	111	72	47	9	1	69	1023
	[%]	7.5	13.4	16.8	17.3	14.8	10.9	7.0	4.6	0.9	0.1	6.7	100
Male	[deaths]	51	99	144	144	115	83	53	34	6	1	46	776
	[%]	6.6	12.8	18.6	18.6	14.8	10.7	6.8	4.4	0.8	0.1	5.9	100
Female	[deaths]	26	38	28	33	36	28	19	12	3	0	19	242
	[%]	10.7	15.7	11.6	13.6	14.9	11.6	7.9	5.0	1.2	0	7.9	100



Table 3: Natural hazard fatalities in Switzerland (1946-2015) classified by victims' activity, accident locality and victims' mode of transport.

Activity	Flood	Landslide	Rockfall	Windstorm	Avalanche	Lightning	Other	All processes	All processes [%]
work	35	13	15	24	110	70	88	355	34.7
leisure time	73	40	40	52	245	82	4	536	52.4
other/unclear	16	21	30	29	23	12	1	132	12.9
total	124	74	85	105	378	164	93	1023	100
in or around a building	14	40	8	4	192	33	2	293	28.6
on transportation routes	31	20	58	34	164	28	1	336	32.8
in open terrain	4	11	14	9	4	95	1	138	13.5
on a lake	63	2	1	44		1		46	4.5
in a stream channel	12	1	4	14	18	7	89	65	6.4
other/unclear	124	74	85	105	378	164	93	145	14.2
total	124	74	85	105	378	164	93	1023	100
on foot	77	22	51	36	78	112	90	466	61.6
in vehicle	20	11	27	20	46	14		138	18.2
by boat	5			44		1		50	6.6
by ski					49			49	6.5
by bicycle	3			1		6		10	1.3
by public transport	1	1			4			6	0.8
other/unclear	9	0	2	4	16	5	2	38	5.0
total ^(A)	115	34	80	105	193	138	92	757	100

^(A) Note that 266 fatalities that occurred in buildings are not considered in this section (mode of transportation)



965 Table 4: Quality of the data describing the circumstances of fatal natural hazard events and the victims (certain = information regarding this variable is fully
 966 reliable; probable = information regarding this variable was deduced but is very probable; unknown = no information available).
 967

	Certain		Probable		Unknown		Total	
	[no. of deaths]	[%]	[no. of deaths]	[%]	[no. of deaths]	[%]	[no. of deaths]	[%]
Date of event	965	94.3	58	5.7	0	0.0	1023	
Time of event	558	54.5	360	35.2	105	10.3	1023	
Gender	1015	99.2	3	0.3	5	0.5	1023	
Age	938	91.7	16	1.6	69	6.7	1023	
Activity	788	77.0	107	10.5	128	12.5	1023	
Locality	898	87.8	101	9.9	24	2.3	1023	
Mode of transportation ^(A)	541	71.5	181	23.9	35	4.6	757	

968
 969 ^(A) Note that 266 fatalities that occurred in buildings are not considered in this row (mode of transportation)
 970
 971



972 Table 5: Fatal natural hazard events in Switzerland (1946-2015) classified by number of victims. The last two columns indicate the percentage of people that died
 973 in single fatality events (second to last column) and in events with more than ten deaths (last column); note that in the bottom row 100% corresponds to 1023
 974 deaths for all process types.

	Number of events with n deaths					All fatal events	Percent of people killed in events where $n=1$	Percent of people killed in events where $n>10$
	$n=1$	$n=2$	$n=3$	$4 \leq n \leq 10$	$n > 10$		[%]	[%]
Flood	97	9	3	-	-	109	78.2	0.0
Landslide	23	13	2	1	1	40	31.1	17.6
Rockfall	68	4	-	2	-	74	80.0	0.0
Windstorm	74	10	1	2	-	87	70.5	0.0
Lightning	144	10	-	-	-	154	87.8	0.0
Avalanche	99	27	18	20	3	167	26.2	15.9
Other	2	-	1	-	1	4	2.2	94.6
All processes	507	73	25	25	5	635	49.6	15.7

976

977

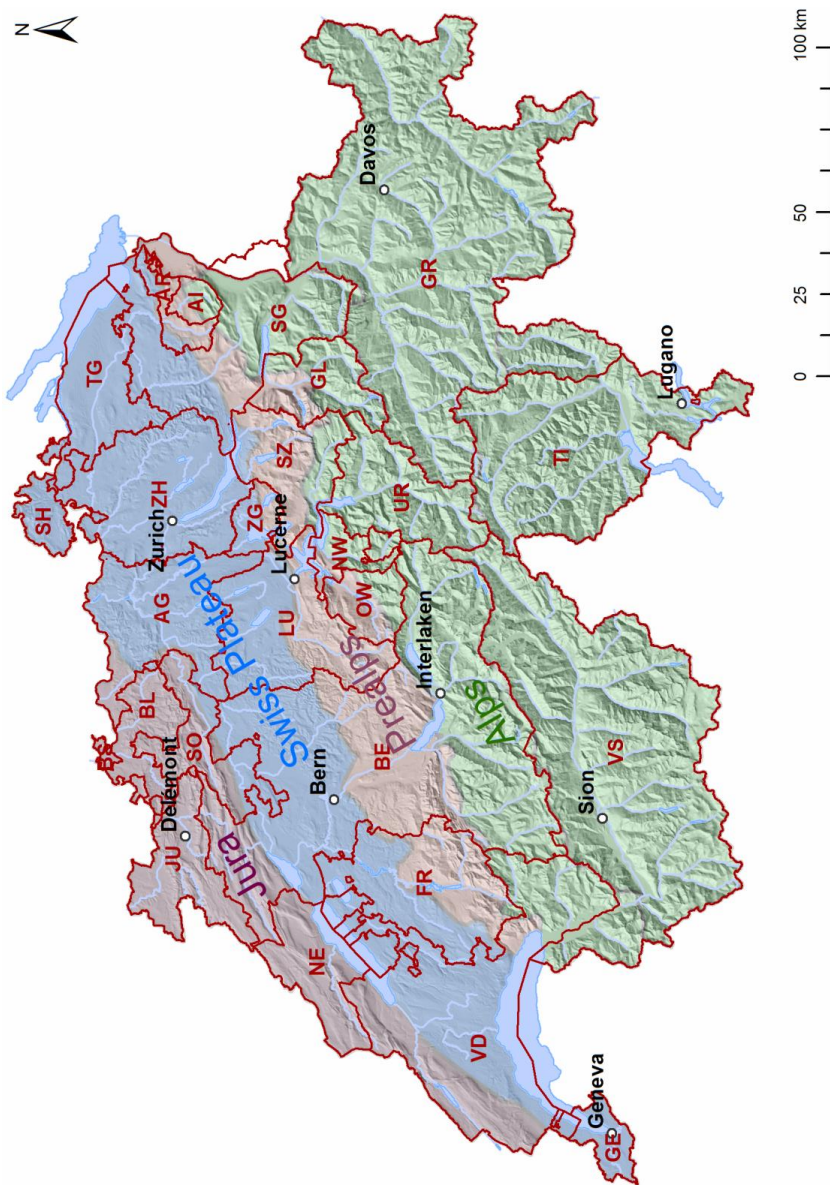


Figure 1: Study area showing the Swiss cantons (red polygons with abbreviations, see www.bfs.admin.ch/bfs/portal/en/index/dienstleistungen/premiere_visite/03/03_02.html), the geomorphologic-climatic regions Jura, Swiss Plateau, Prealps and Alps (areas with different background colours), and key cities.

978

979

980

981

982

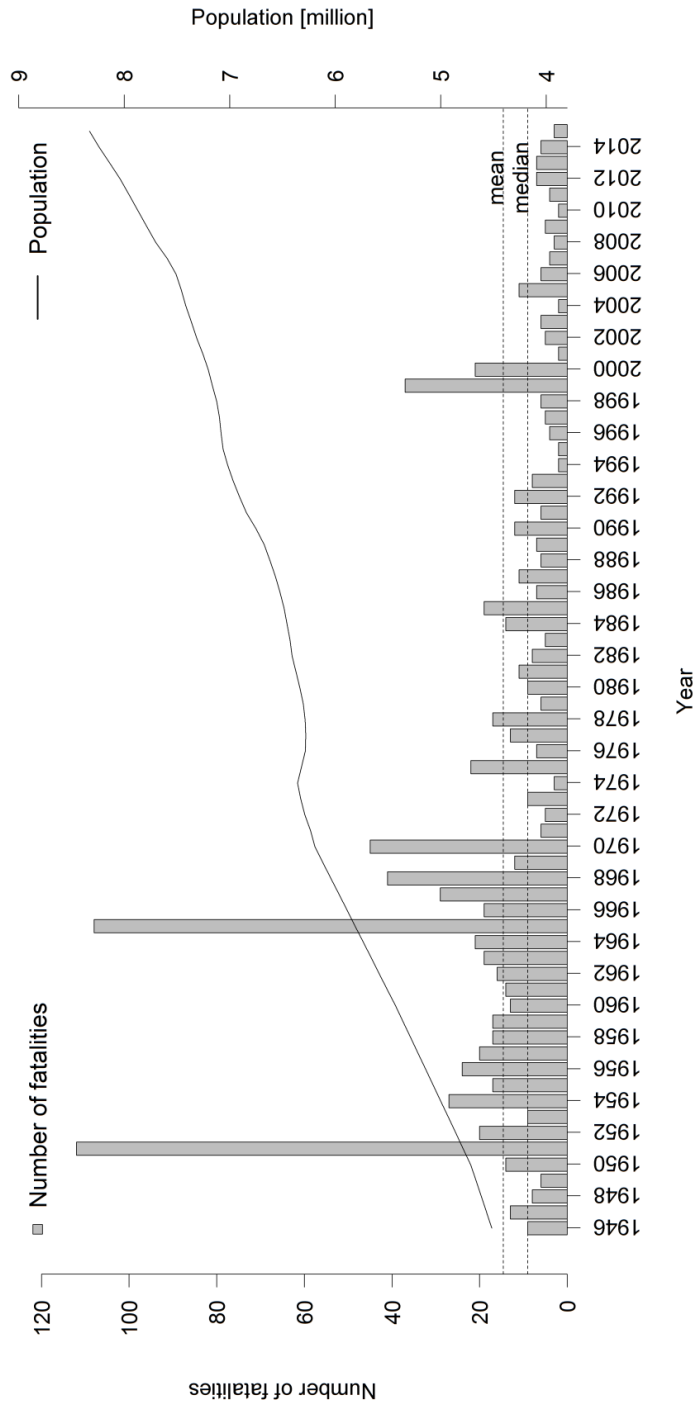


Figure 2: Annual frequency of total natural hazard fatalities in Switzerland from 1946 to 2015. The thin black line indicates the population increase during the study period. The horizontal lines indicate the mean and median annual fatality frequencies over the entire study period.

983
 984
 985
 986

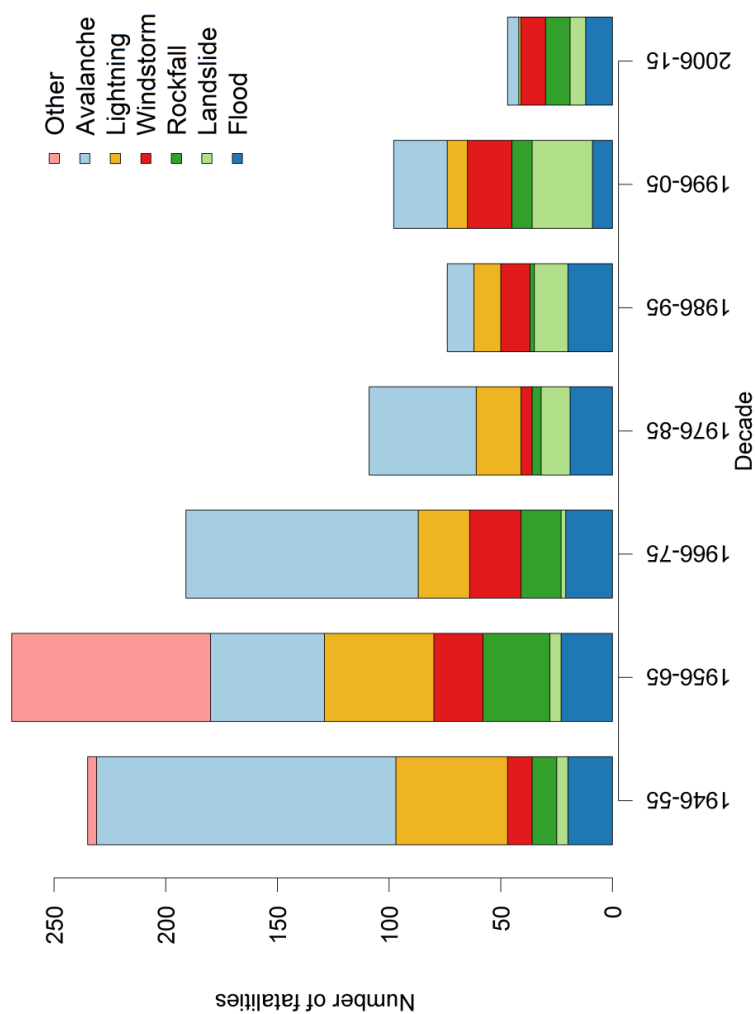


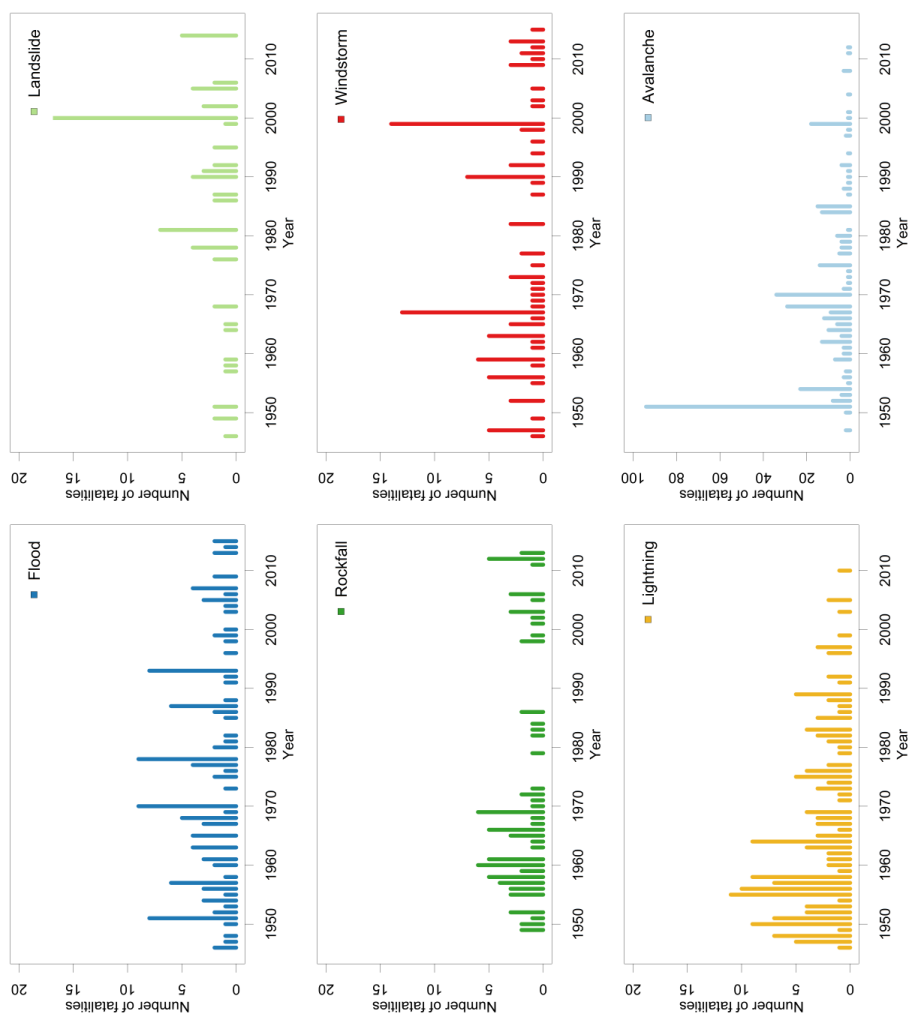
Figure 3: Decadal sum of natural hazard fatalities in Switzerland from 1946 to 2015. The different colours indicate the seven process categories defined for this study (see section 3.4).

987

988

989

990



961
 992 **Figure 4: Annual frequency of fatalities in Switzerland for the different natural hazard categories considered in this study (except the category other). Note that the y-**
 993 **axis for avalanche ranges from 0 to 100 fatalities while the y-axis for all other process categories ranges from 0 to 20 fatalities.**

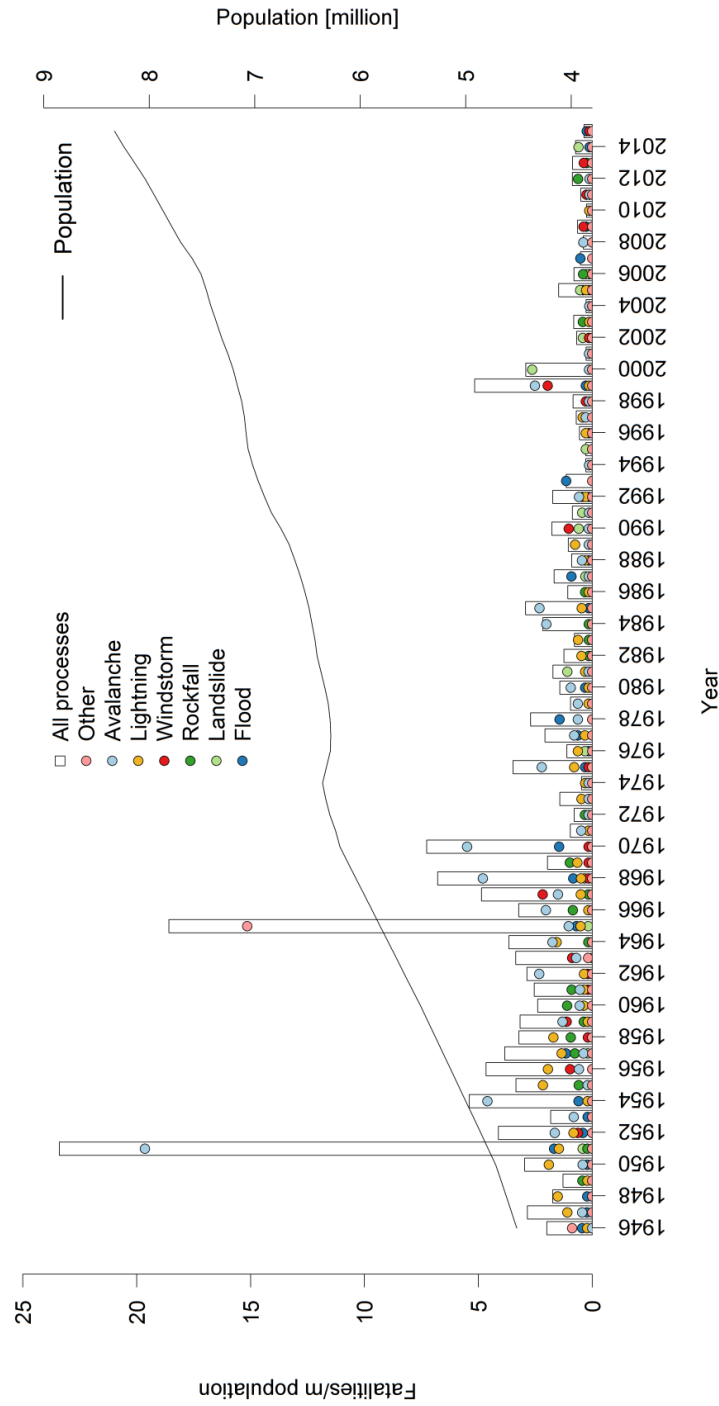


Figure 5: Annual frequency of natural hazard fatalities in Switzerland from 1946 to 2015, normalized by population (per million population). While the transparent bars show the overall normalized fatalities, the coloured dots represent the different process categories. The thin black line indicates the population increase during the study period.

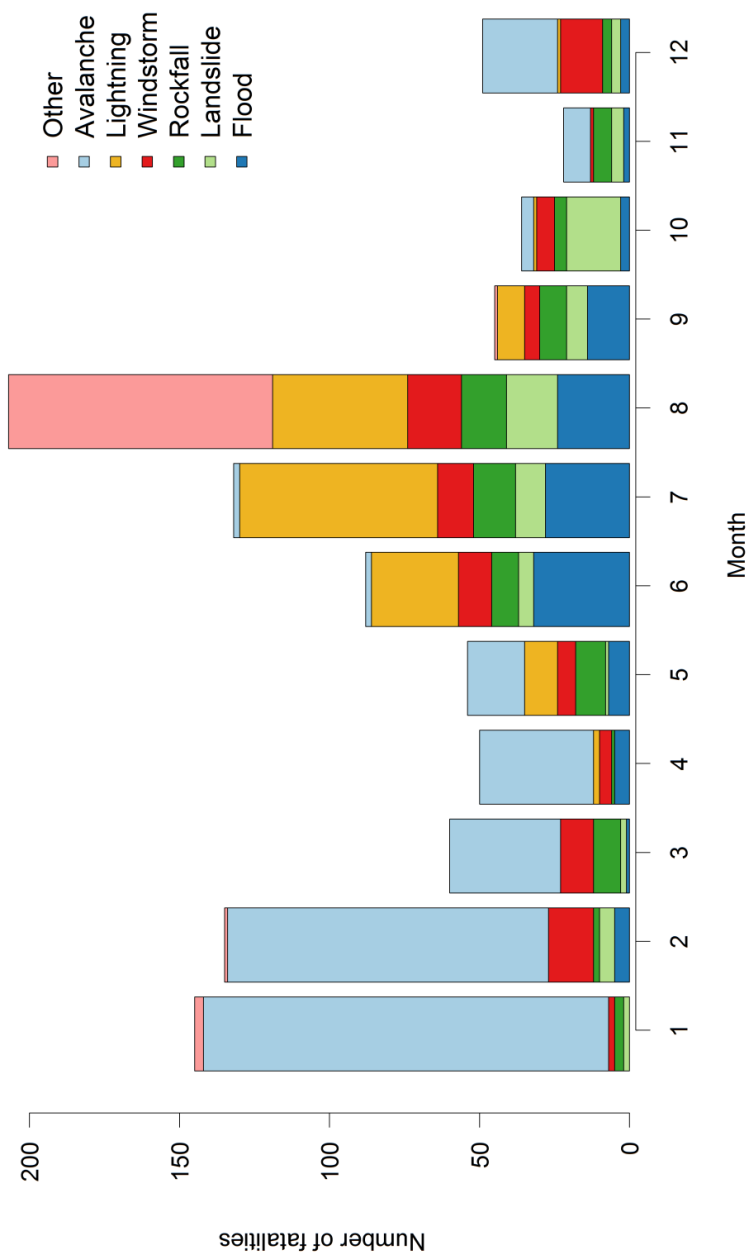
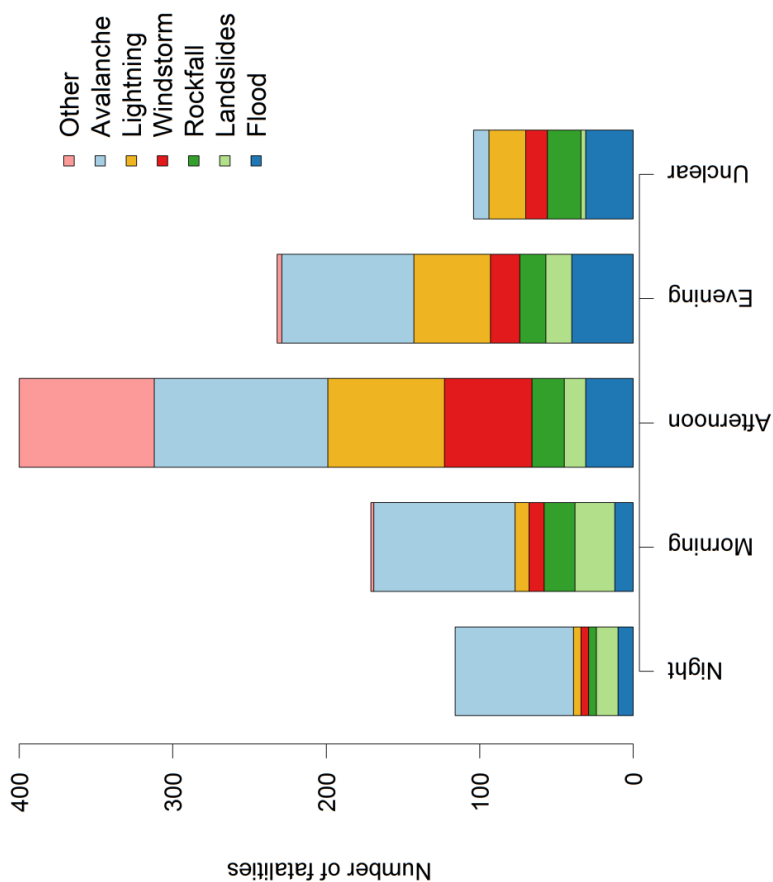


Figure 6: Monthly distribution of natural hazard fatalities in Switzerland from 1946 to 2015 (sum over study period). The different colours indicate the seven process categories defined for this study.

1000
 1001
 1002



1003
 1004 Figure 7: Distribution of natural hazard fatalities in Switzerland from 1946 to 2015 by time of day (sum over study period); morning (06:00-11:59 local standard time),
 1005 afternoon (12:00-17:59), evening (18:00-23:59) and night (00:00-05:59). The different colours indicate the seven process categories defined for this study.

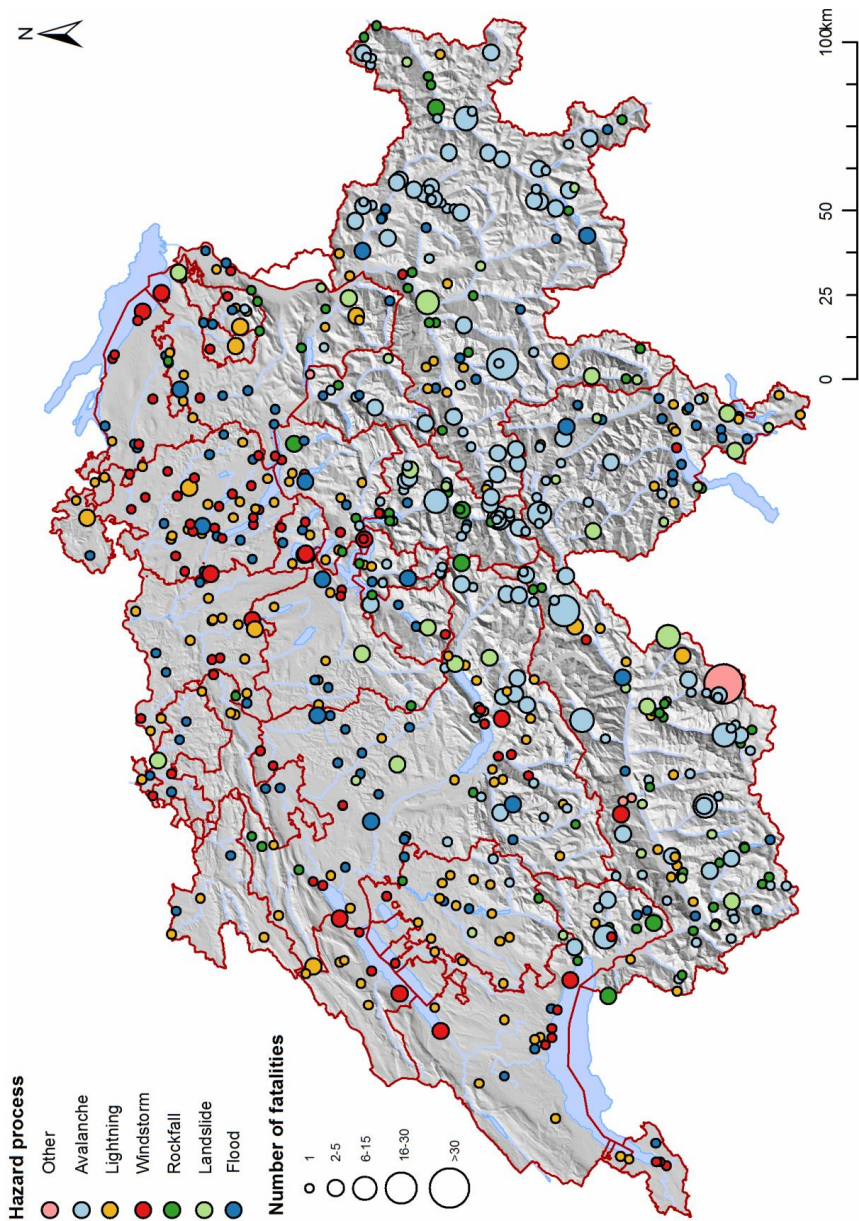
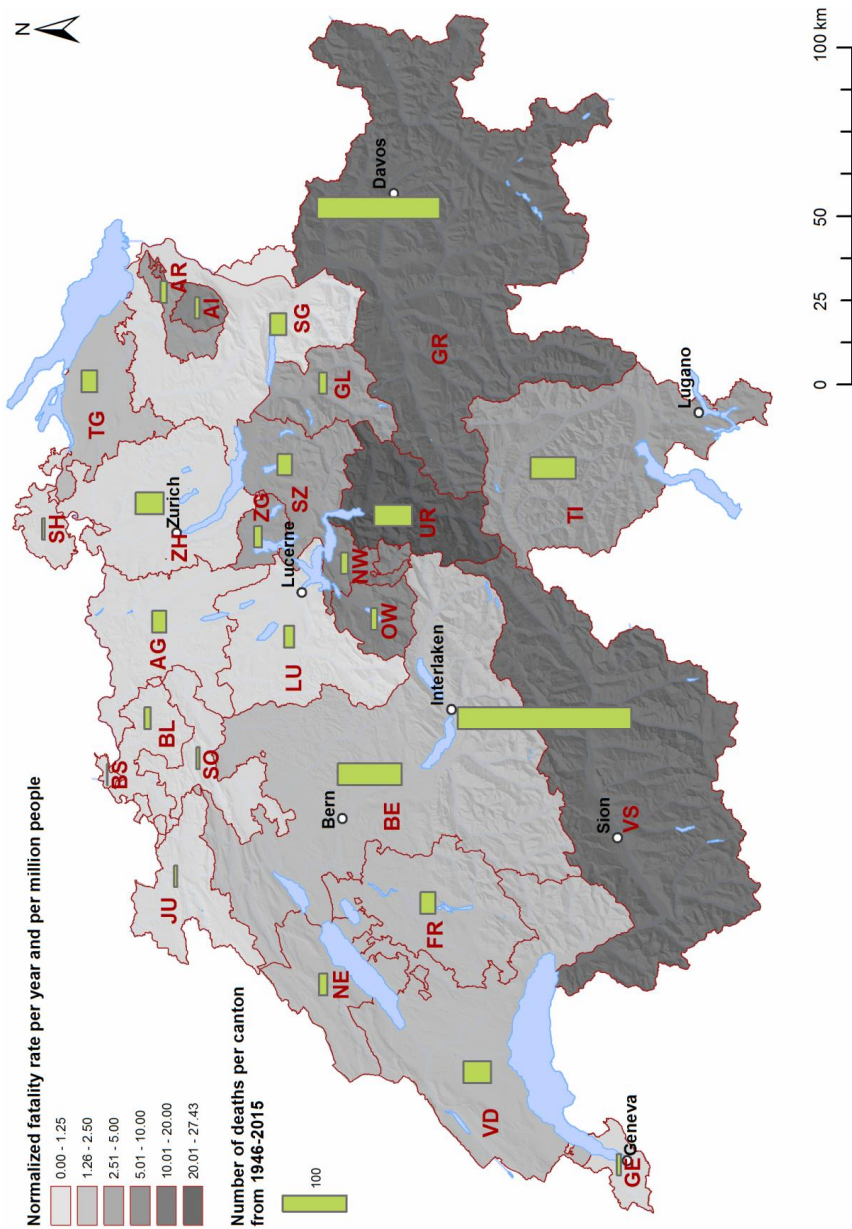


Figure 8: (a) Spatial distribution of fatalities caused by natural hazard processes in Switzerland from 1946 to 2015. The colour of each data point indicates the process type, and the size of the symbol shows the number of deaths per fatal accident.

1006
1007
1008
1009



1010
 1011
 1012

Figure 8: (b) Spatial distribution of normalized natural hazard fatalities (per year and per million population) over the 70-year study period at the cantonal level. The bars indicate the total number of deaths for each canton over the entire period.