

Interactive comment on “Evaluation of a compound distribution based on weather patterns subsampling for extreme rainfall in Norway” by J. Blanchet et al.

J. Blanchet et al.

juliette.blanchet@ujf-grenoble.fr

Received and published: 11 September 2015

Reply to Anonymous Referee \#1 is attached.

Please also note the supplement to this comment:

<http://www.nat-hazards-earth-syst-sci-discuss.net/3/C1632/2015/nhessd-3-C1632-2015-supplement.pdf>

Interactive comment on Nat. Hazards Earth Syst. Sci. Discuss., 3, 3543, 2015.

C1632

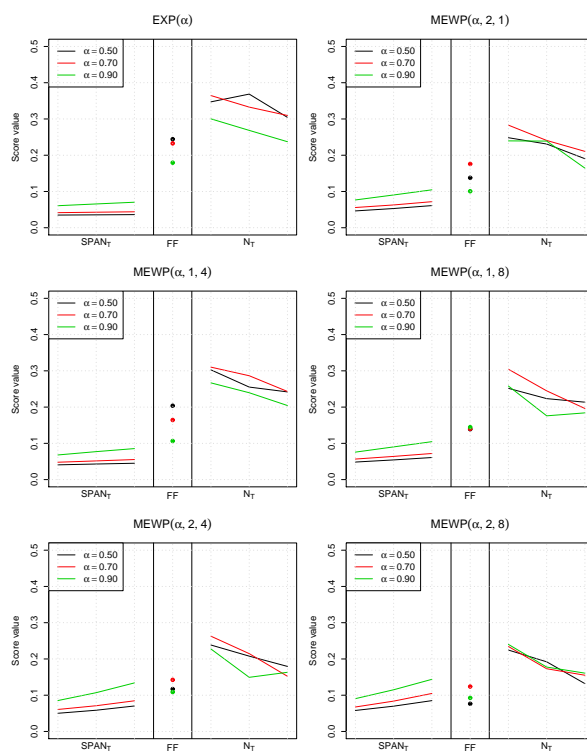


Fig. 1.

C1633

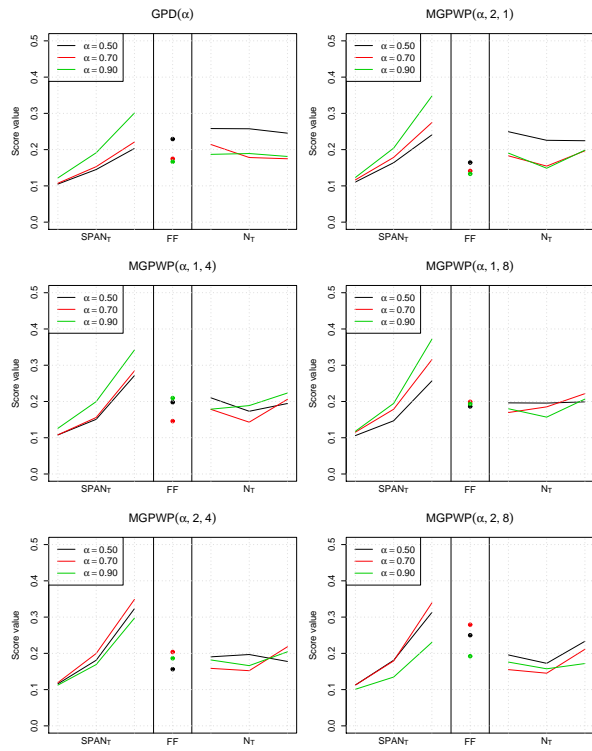


Fig. 2.

C1634

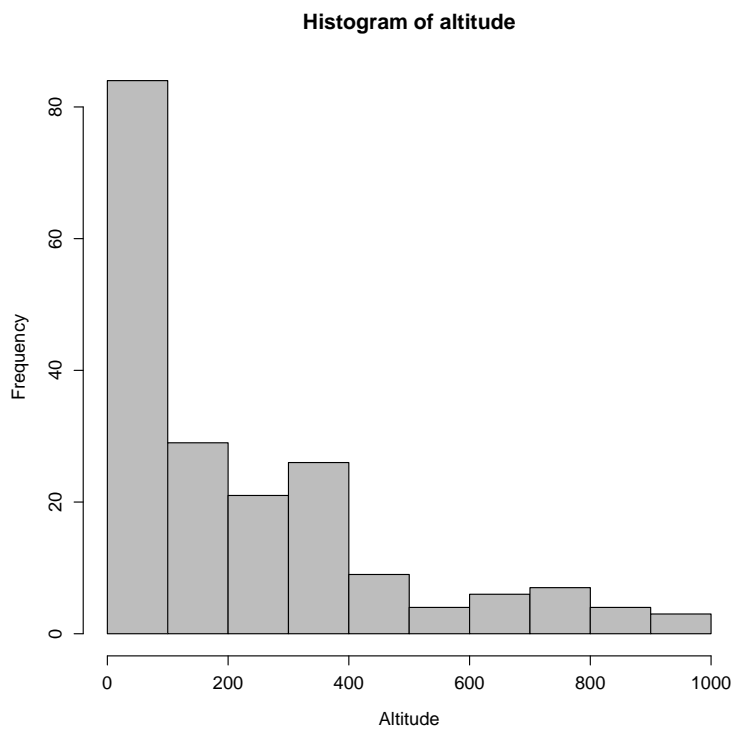


Fig. 3.

C1635

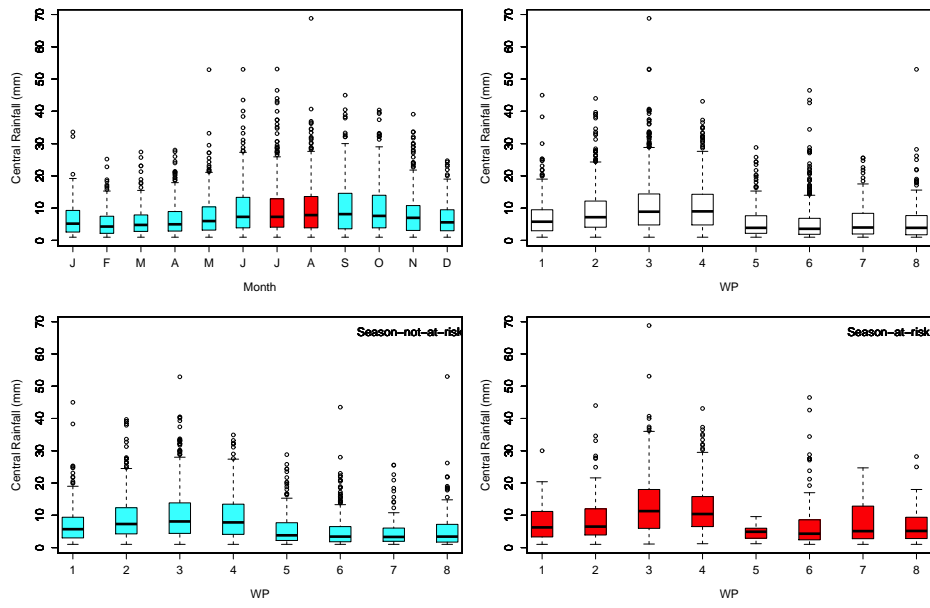


Fig. 4.

C1636

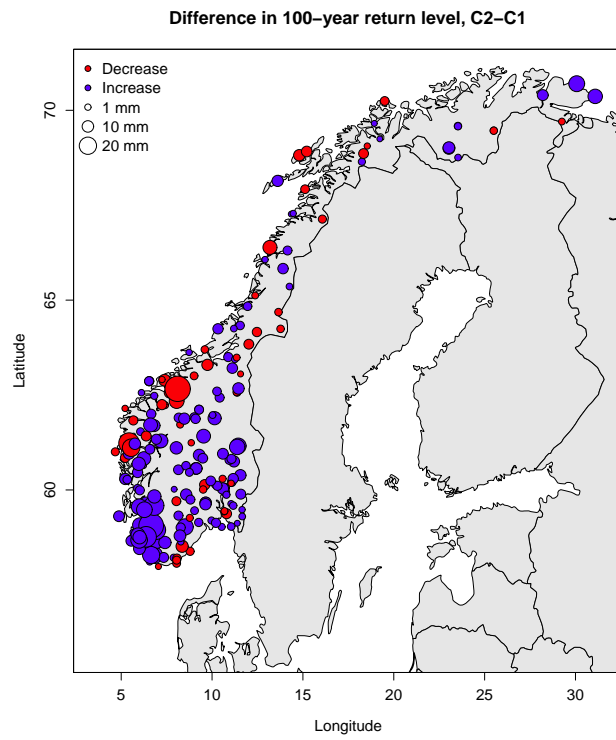


Fig. 5.

C1637

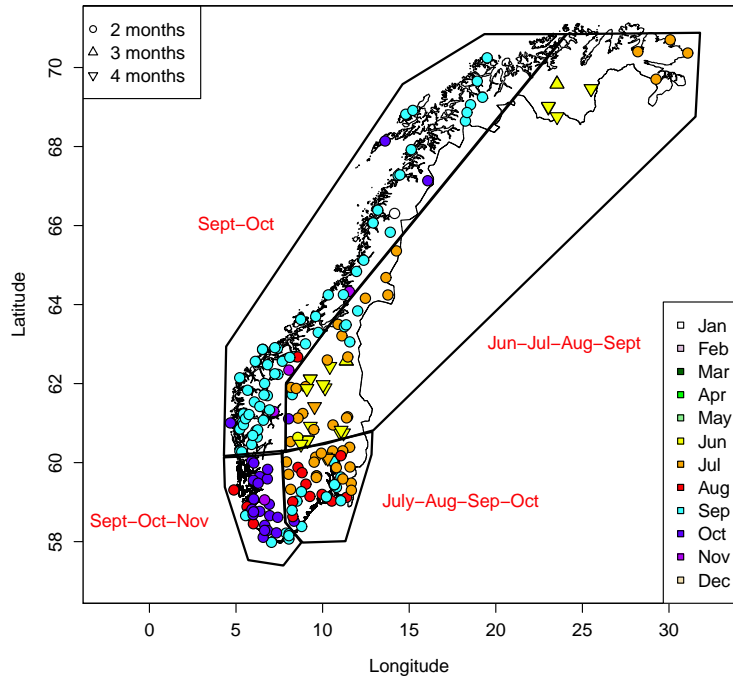


Fig. 6.

C1638

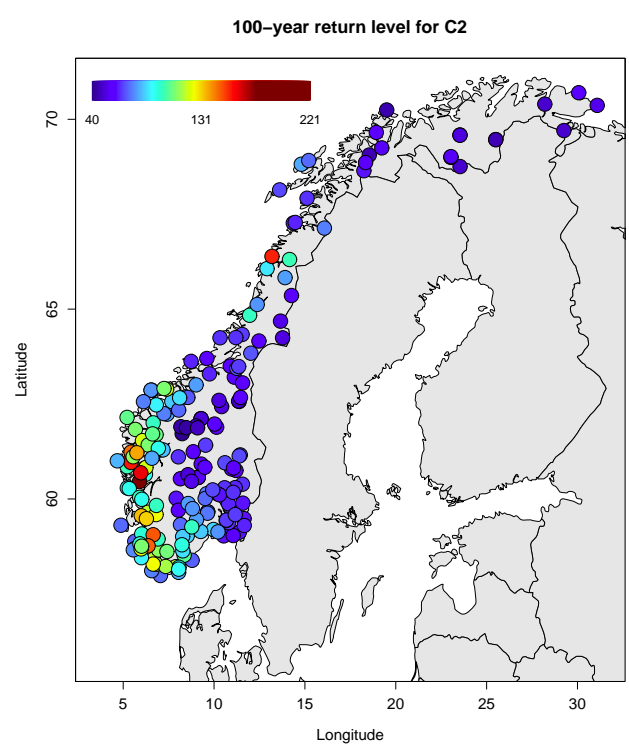


Fig. 7.

C1639

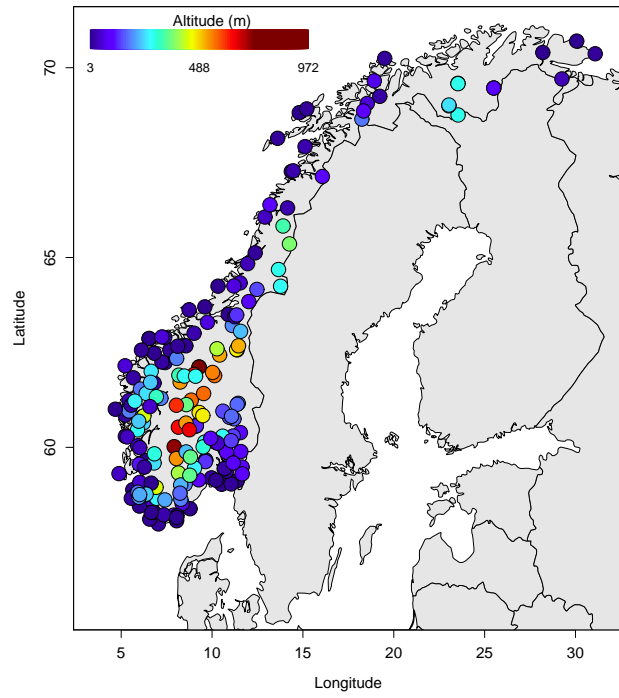


Fig. 8.

C1640