

Interactive comment on “The environmental balance of the Alta Val d’Agri: a contribution to the evaluation of the industrial risk and strategic sustainable development” by S. Loperte and C. Cosmi

S. Loperte and C. Cosmi

simona.loperete@imaa.cnr.it

Received and published: 16 July 2015

Please find attached the new version of manuscript, the point to point response to reviewer n°2, and the new version of figures.

Please also note the supplement to this comment:

<http://www.nat-hazards-earth-syst-sci-discuss.net/3/C1268/2015/nhessd-3-C1268-2015-supplement.pdf>

C1268

Interactive comment on Nat. Hazards Earth Syst. Sci. Discuss., 3, 41, 2015.

C1269

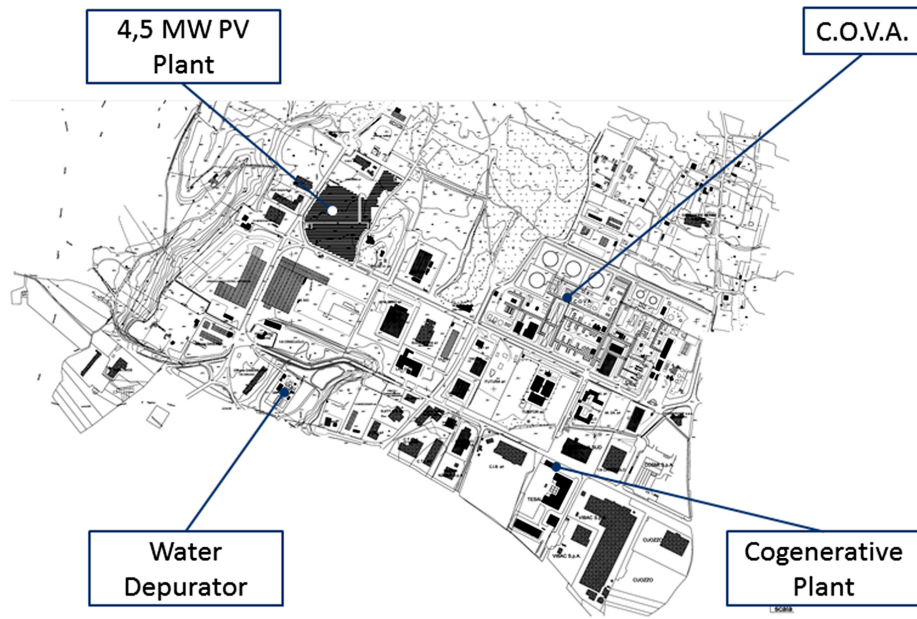


Fig. 1.

C1270

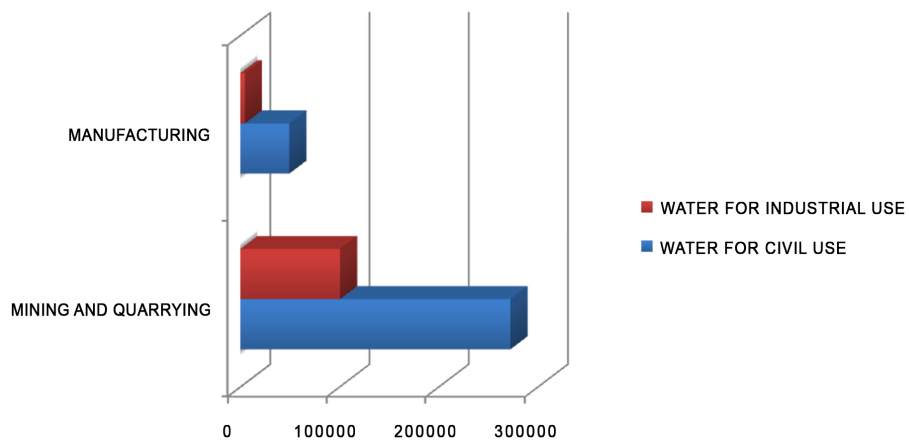


Fig. 2.

C1271

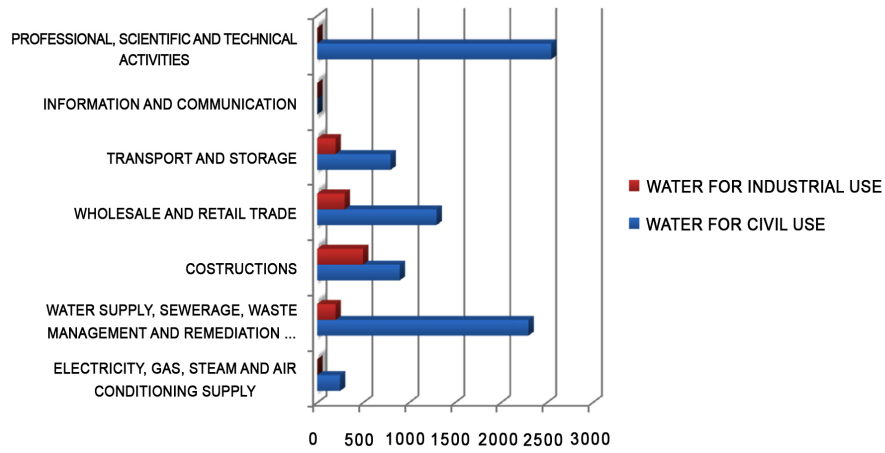


Fig. 3.

C1272

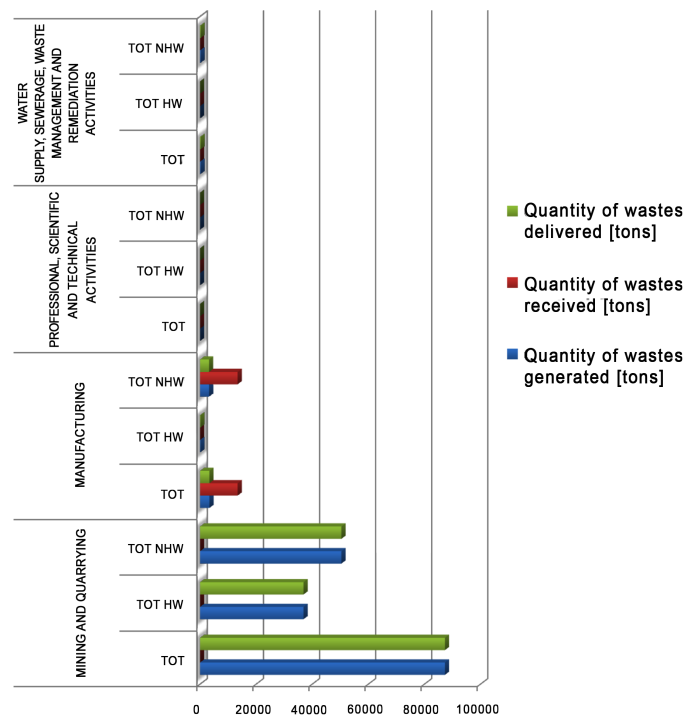


Fig. 4.

C1273

HAZARDOUS WASTES

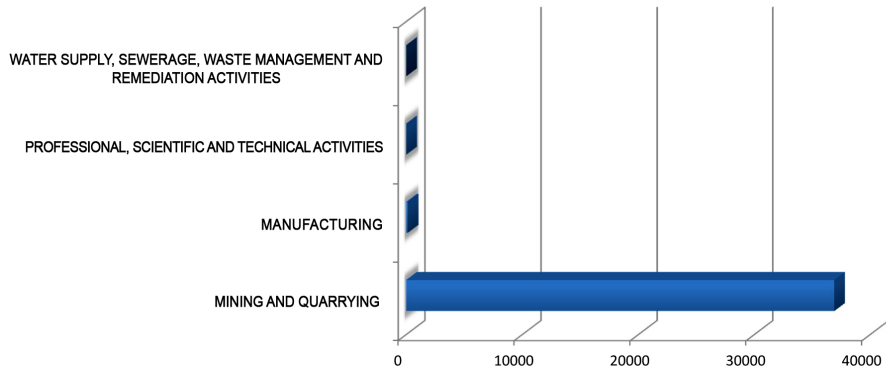


Fig. 5.

C1274

NON-HAZARDOUS WASTES

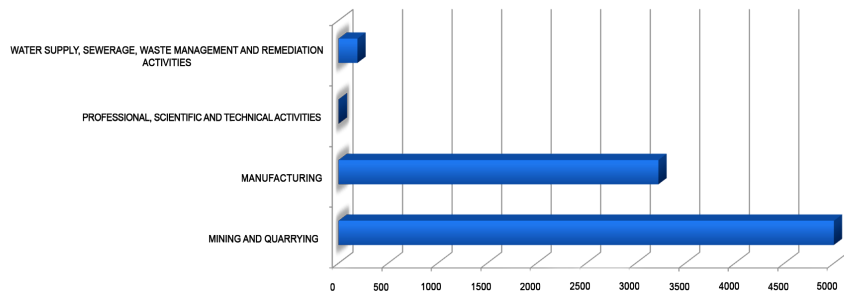


Fig. 6.

C1275

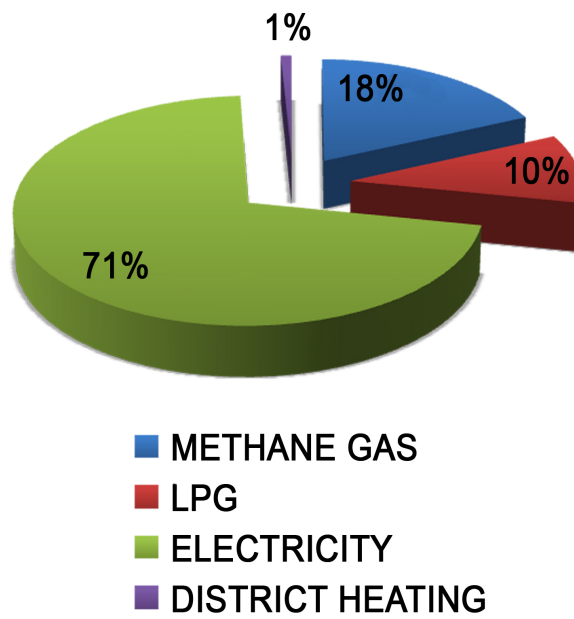


Fig. 7.

C1276

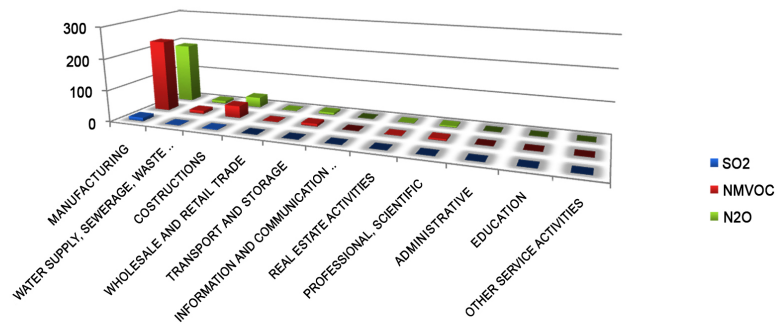


Fig. 8.

C1277

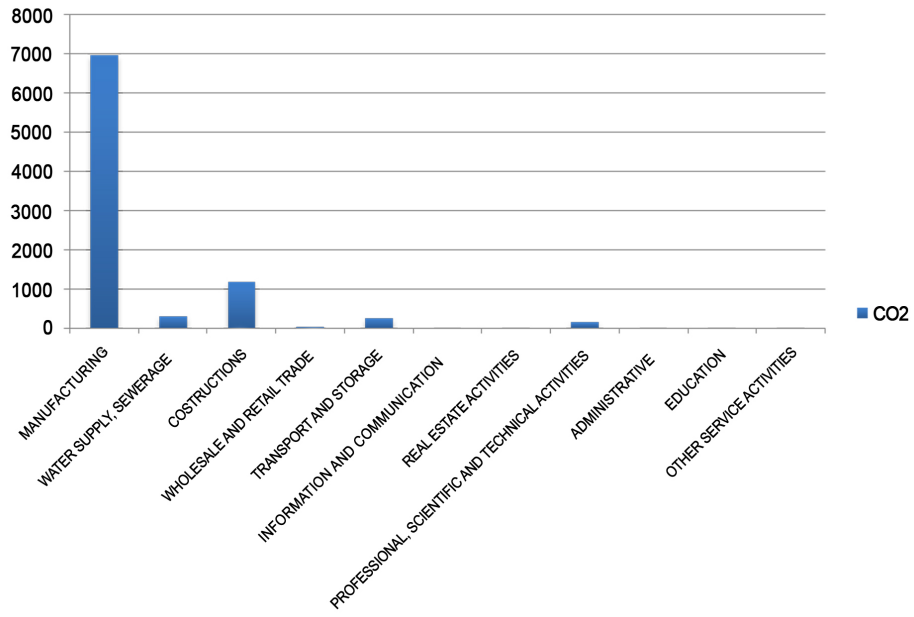


Fig. 9.

C1278

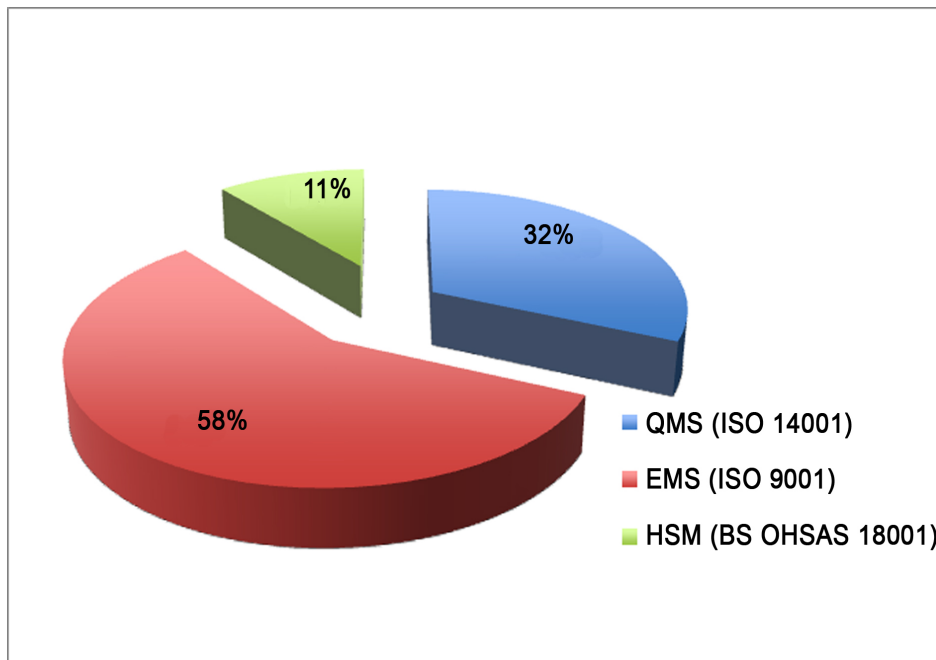


Fig. 10.

C1279