

This discussion paper is/has been under review for the journal Natural Hazards and Earth System Sciences (NHESD). Please refer to the corresponding final paper in NHESD if available.

GB-InSAR monitoring and observational method for landslide emergency management: the Montaguto earthflow (AV, Italy)

F. Ferrigno, G. Gigli, R. Fanti, and N. Casagli

Department of Earth Sciences, University of Florence, Via La Pira 4, Florence, Italy

Received: 23 October 2015 – Accepted: 10 November 2015 – Published: 7 December 2015

Correspondence to: F. Ferrigno (federica.ferrigno@unifi.it)

Published by Copernicus Publications on behalf of the European Geosciences Union.

NHESD

3, 7247–7273, 2015

GB-InSAR monitoring
and OM for landslide
emergency
management

F. Ferrigno et al.

Title Page

Abstract

Introduction

Conclusions

References

Tables

Figures

⏪

⏩

◀

▶

Back

Close

Full Screen / Esc

Printer-friendly Version

Interactive Discussion



Abstract

On 10 March 2010, due to the heavy rainfall that occurred on the previous days, the Montaguto earthflow reactivated, involving the road SS 90 “Delle Puglie”, as had happened previously in May 2005 and in September 2009, and reaching the Roma–Bari railway.

This determined a special attention of the National Civil Protection Department and a widespread monitoring and analysis program was initiated. A monitoring activity using GB-InSAR (Ground Based Interferometric Synthetic Aperture Radar) system began, in order to investigate the landslide kinematics, to plan urgent safety measures for risk mitigation and to design long term stabilization work. In this paper the GB-InSAR monitoring system results and its applications in the Observational Method (OM) approach are presented. The paper also highlights how the OM based on the GB-InSAR technique can produce savings in cost and time on engineering projects, without compromising safety, and how it can also benefit the geotechnical community by increasing scientific knowledge. This study focuses on the very much active role played by the monitoring activities, in both the design and plan modifications; with a special consideration for the emergency phase.

1 Introduction

Landslides can be very dangerous, often causing casualties, huge damage and significant economic loss.

In order to mitigate the landslide hazard, when the processes are well known, and to support the management of landslide risks, during the recent years the studies of new monitoring technologies were performed. Unfortunately the preventive measures are often lacking or not adequate to guarantee the total protection of the people and infrastructures involved in complex landslide systems, in mountainous and hilly areas.

NHESSD

3, 7247–7273, 2015

GB-InSAR monitoring and OM for landslide emergency management

F. Ferrigno et al.

[Title Page](#)

[Abstract](#)

[Introduction](#)

[Conclusions](#)

[References](#)

[Tables](#)

[Figures](#)

[⏪](#)

[⏩](#)

[◀](#)

[▶](#)

[Back](#)

[Close](#)

[Full Screen / Esc](#)

[Printer-friendly Version](#)

[Interactive Discussion](#)



GB-InSAR monitoring and OM for landslide emergency management

F. Ferrigno et al.

Title Page	
Abstract	Introduction
Conclusions	References
Tables	Figures
⏪	⏩
◀	▶
Back	Close
Full Screen / Esc	
Printer-friendly Version	
Interactive Discussion	

In this case, monitoring with advanced technology, even used to support the work planning and realization, represents an efficient method for approaching landslide risk management. Thanks to its characteristics the Montaguto landslide was chosen to analyse the interaction between monitoring systems and OM.

As the landslide toe sector represents the most critical area, a real-time monitoring through a GB-InSAR system was installed. The GB-InSAR technique applied to landslide monitoring, guarantees a low cost, multi-temporal deformation maps (almost) in real time, constitutes a valuable and versatile tool for rapid mapping, functional both in case of rapid alert (early warning) in emergency conditions and as a scientific-technological support during the phases of emergency management.

The use of GB-InSAR as a landslide monitoring technique is well documented in the last decade, with applications in different risk scenarios (Tarchi et al., 2003; Canuti et al., 2004; Casagli et al., 2010). In some cases, the system was used for controlling slope movements, threatening one or more lifelines (Casagli et al., 2008; Gigli et al., 2011, 2014; Intrieri et al., 2015), as in the Montaguto site. However, the velocity of this landslide at the beginning of the reactivation was high in comparison to the usual resolution power of the GB-InSAR systems: in this sense, the Montaguto case history represents a very interesting benchmark for the application of this technique. The main aim of this paper is also to highlight the efficiency and the important role of a continuous, panoramic and high resolution monitoring system as a support in work design.

The integration between the monitoring system and the application of the OM, in the Montaguto earthflow stabilization was therefore characterized by three principal phases, during:

- the emergency phase, when the main aim was the removal of the landslide from the road SS90 and the railway, supporting the work management;
- the long term stabilization works (lasted three years), suggesting and driving the project design;



GB-InSAR monitoring and OM for landslide emergency management

F. Ferrigno et al.

[Title Page](#)

[Abstract](#)

[Introduction](#)

[Conclusions](#)

[References](#)

[Tables](#)

[Figures](#)

[⏪](#)

[⏩](#)

[◀](#)

[▶](#)

[Back](#)

[Close](#)

[Full Screen / Esc](#)

[Printer-friendly Version](#)

[Interactive Discussion](#)



The adopted technique provides measurement of ground displacement through remote sensing. It is able to detect a continuous 2-D deformation field of the observed ground portion, without the necessity of positioning targets on the ground and without any physical contact with the slope (Tarchi et al., 1997). This technique is based on SAR (Curlander and McDonough, 1991) and on interferometric techniques (InSAR), originally developed for earth observation from satellites (Zebker and Goldstein, 1986). InSAR is based on the quantitative comparison of the phase information between two radar acquisitions of the same scenario. Using a pair of complex SAR images, where the former and the latter are referred to as master (m) and slave (s) images, respectively, an interferogram (I) is formed according to the following relationship:

$$I(k, l) = m(k, l)s(k, l)^*$$

where * indicates the conjugate.

Depending on the installation method and on the distance between the sensor and the observed scene, different properties of SAR images are acquired with the GB-InSAR technique, and in particular, the value of spatial resolution exists. The synthetic aperture is realized by moving, through a linear positioner, a motorized sled hosting the radar head along a straight rail 2.7 m long. The main operational parameters adopted during the monitoring surveys are summarized in Table 1.

The GB-InSAR provides displacement measurements of up to a few square kilometres with sub-millimetre precision and high temporal frequency of acquisition (more than ten scans per hour).

On 29 April 2010, the apparatus was installed on the opposite stable slope located at approximately 4 km from the earthflow, in order to measure the component of the movement along the line-of-sight of the radar (Fig. 3).

The system was adapted to the landslide features, the revisiting time lapse was set to 3.5 min to assure sufficient real time movement detection.

From the data analysis and interpretation, it was possible to recognize and define the evolution of the observed phenomenon, both in terms of deformation rate decrease and increase.

Since the stabilization projects are continuously recorded and highlighted by the GB-InSAR monitoring system and because the hydraulic works are efficiently portrayed, it was possible to determinate that the deformation processes and movement speeds were globally, yet gradually decreasing.

The displacement trend demonstrates that mitigation efforts have been effective to date (Fig. 6), yet it is clear that this monitoring system should continue to play a role in future management and monitoring projects over time.

5 The observational method

The development and the use of the OM started in the 1940's. Its historical evolution can be summarized by the two most important theories, stated by Terzaghi and Peck:

Every job is a large scale experiment. The information obtained from such experiments cannot be secured by any other means. It is of inestimable value in connection with future construction work of similar nature, provided the observations were reliable and complete enough to permit fairly definite interpretation (Karl Terzaghi).

Peck's observational method involves developing an initial design based on most probable conditions, together with predictions of behavior. Calculations are made and these are used to identify contingency plans and trigger values for the monitoring system. Peck proposed that construction work should be started using the most probable design. If the monitoring records exceeded the predicted behavior, then the predefined contingency plans would be triggered. The response time for monitoring and implementation of the contingency plan must be appropriate to control the work.

GB-InSAR monitoring and OM for landslide emergency management

F. Ferrigno et al.

[Title Page](#)

[Abstract](#)

[Introduction](#)

[Conclusions](#)

[References](#)

[Tables](#)

[Figures](#)

[⏪](#)

[⏩](#)

[◀](#)

[▶](#)

[Back](#)

[Close](#)

[Full Screen / Esc](#)

[Printer-friendly Version](#)

[Interactive Discussion](#)



GB-InSAR monitoring and OM for landslide emergency management

F. Ferrigno et al.

Title Page	
Abstract	Introduction
Conclusions	References
Tables	Figures
⏪	⏩
◀	▶
Back	Close
Full Screen / Esc	
Printer-friendly Version	
Interactive Discussion	

This methodology has been placed at the base of all the activities carried out on the landslide up to now and led to indisputable results, although it cannot certify, at least at present, the definitive stabilization of the landslide. The analysis started from the preliminary definition of the work criteria and proceeded to the subsequent phases of design and construction.

The area affected by the landslide is very large, therefore it has been divided into 3 zones, to better plan and carry out the required interventions.

The landslide consists in three main areas, involved in stabilization works as follow:

- Upper sector (depletion zone): lake drainage, upstream surface drainage (diversion ditches), re-profiling of the main scarp, modification of the slope profile, stream channels restoration to natural conditions.
- Middle sector (main track): modification of the slope profile, surface drains coupled with deep trench drains, left-bank stream channelization, right-bank stream channelization.
- Lower sector (deposition zone): landslide deviation on the left side, surface drains coupled with deep trench drains, gabion toe drain and buttressing, re-profiling of landslide deposits on the right side, left-bank stream channelization.

As water was the main engine of the landslide, the primary objective of the undertaken actions was to remove it, both from the surface and from the deep layers. The restoration of an effective surface circulation has thus been planned, coupled with drainage trenches that are able to collect deep ground water.

The upper part of the landslide was characterized by the presence of a system of lakes, whose water was directed by drainage trenches and shallow channels into a well and is then channelled into a watershed located outside the landslide.

Shallow channels with hydraulic jumps were constructed in the middle part of the landslide. Deep drainage trenches that allowed deep ground water to spring outward at the sites of hydraulic jumps were an integral part of the design.



The construction of shallow channels coupled with deeper ground water drainage trenches was repeated at the lower part of the landslide. The water from the lower part and from lateral channel system is conveyed towards a natural watercourse that flows beyond the toe of the slide.

In this way, the abundant standing water within the surface depressions that had been created by the landslide was eliminated, thus reducing water infiltration and the rate of movement.

The stabilization works were first started at the toe of the slide, where the interventions for water drainage were completed with the aim of protecting the main elements at risk. At first, steel reinforced gabions were installed to build a drainage systems of considerable size. Next, the landslide was reshaped in accordance with the constructed drainage works.

A very interesting example of the coupled action (GB-InSAR and work design), is the analysis of the landslide behavior in the mid-sector, the so-called “elbow” (E sector): the movement became significant during November 2011–May 2012. Its evolution was highlighted by GB-InSAR data. To verify this information, some observational reconnaissance were performed and the evidence of the landslide activity was renewed deformation and damage to three weirs and the geotextile filter, Fig. 8.

The E Sector presently has the most active deformation, this is why a design variation involving additional drainage elements in the two main channels was incorporated into the design. By interferometric analysis it was possible to detect the deformation phenomena affecting the E Sector and subsequently a design variant was outlined (Fig. 10). The monthly displacement cumulated maps refer to the two highest deformation rate times (March–April 2012), when the velocity reached about 1 cm day^{-1} .

To highlight the project’s efficiency in relation to the to the slowing rate of displacement, a velocity graph was made to compared the beginning and end of the different stabilization works, Fig. 10.

GB-InSAR monitoring and OM for landslide emergency management

F. Ferrigno et al.

[Title Page](#)

[Abstract](#)

[Introduction](#)

[Conclusions](#)

[References](#)

[Tables](#)

[Figures](#)

[⏪](#)

[⏩](#)

[◀](#)

[▶](#)

[Back](#)

[Close](#)

[Full Screen / Esc](#)

[Printer-friendly Version](#)

[Interactive Discussion](#)



The first but considerable stabilization work phase, concerning the shallow and sub-surface water removal was accomplished. The Montaguto landslide represents a very interesting example of naturalistic engineering techniques in stabilization work with a low environmental impact (Fig. 11).

6 Conclusions

The application of the GB-InSAR technique for monitoring the Montaguto earthflow has demonstrated its capability to continuously acquire accurate displacement measurements over large areas. Its high image acquisition rate and the capacity to provide displacement maps with sub millimetre accuracy are specifically suited for assessing emerging slope instability problems, especially during emergency conditions.

The GB-InSAR approach has proved to be very useful for the application of the OM during the emergency phase. It supports quick delineation of the slide, and provides the basis for stabilization and excavation planning and design. Moreover, it allows planning of work phases that will greatly increase the safety of workers and the community. The aerial mapping of displacements over the entire slope is very useful in identifying areas of complex deformation patterns with different rates of movement.

The results during this study period show a general decrease in rates of displacement, referable to the whole temporal landslide system. Nevertheless sectors and unstable zones are characterized by deformations having both characteristics of temporal persistence (the landslide is inactive but not stable) and heterogeneity (some areas reach displacement speed more often than others sectors and/or at different times).

Use of real time monitoring with new technologies allowed us to accomplish documenting 4 years of daily activity.

GB-InSAR monitoring and OM for landslide emergency management

F. Ferrigno et al.

[Title Page](#)

[Abstract](#)

[Introduction](#)

[Conclusions](#)

[References](#)

[Tables](#)

[Figures](#)

[⏪](#)

[⏩](#)

[◀](#)

[▶](#)

[Back](#)

[Close](#)

[Full Screen / Esc](#)

[Printer-friendly Version](#)

[Interactive Discussion](#)



Through the daily monitoring activities, it was also possible to enrich the study by using the OM approach. This allowed us to establish the efficiency of the works and to direct the possible project variations.

Acknowledgements. This work has been carried funded by the National Civil Protection Department. Special thanks go to Paolo Barsotti (Ingeo s.r.l.) and Davide Leva (ELLEGI).

References

Canuti, P., Casagli, N., Farina, P., Leva, D., Tarchi, D., and Nico, G.: Some examples of slope movements monitored by ground-based SAR interferometry, in: Proceedings IC-FSM2003 International Conference on Fast Slope Movements: Prediction and Prevention for Risk Mitigation, Sorrento (Italy), 11–13 May 2003, edited by: Picarelli, L., 71–77, 2003.

Casagli, N., Catani, F., Del Ventisette, C., and Luzi, G.: Monitoring, prediction, and early warning using ground-based radar interferometry, *Landslides*, 7, 291–301, doi:10.1007/s10346-010-0215-y, 2010.

Curlander, J. C. and McDonough, R. N.: *Synthetic Aperture Radar: Systems and Signal Processing*, Wiley, UK, ISBN: 978-0-471-85770-9, 672 pp., 1992.

Gigli, G., Fanti, R., Canuti, P., and Casagli, N.: Integration of advanced monitoring and numerical modeling techniques for the complete risk scenario analysis of rockslides: the case of Mt. Beni (Florence, Italy), *Eng. Geol.*, 120, 48–59, 2011.

Gigli, G., Intrieri, E., Lombardi, L., Nocentini, M., Frodella, W., Balducci, M., Venant, L. D., and Casagli, N.: Event scenario analysis for the design of rockslide countermeasures, *J. Mt. Sci.*, 6, 1521–1530, 2014.

Guadagno, F. M., Forte, R., Revellino, P., Fiorillo, F., and Focareta, M.: Some aspects of the initiation of debris avalanches in the Campania Region: the role of morphological slope discontinuities and the development of failure, *Geomorphology*, 66, 237–254, 2005.

Guerriero, L., Revellino, P., Coe, J. A., Focareta, M., Grelle, G., Albanese, V., Corazza, A., and Guadagno, F. M.: Multi-temporal maps of the Montaguto Earth Flow in Southern Italy from 1954 to 2010, *J. Maps*, 9, 135–145, 2013.

Hungr, O., Leroueil, S., and Picarelli, L.: The Varnes classification of landslide types, an update, *Landslides*, 11, 167–194, doi:10.1007/s10346-013-0436-y, 2013.

GB-InSAR monitoring and OM for landslide emergency management

F. Ferrigno et al.

[Title Page](#)

[Abstract](#)

[Introduction](#)

[Conclusions](#)

[References](#)

[Tables](#)

[Figures](#)

[⏪](#)

[⏩](#)

[◀](#)

[▶](#)

[Back](#)

[Close](#)

[Full Screen / Esc](#)

[Printer-friendly Version](#)

[Interactive Discussion](#)



GB-InSAR monitoring and OM for landslide emergency management

F. Ferrigno et al.

[Title Page](#)

[Abstract](#)

[Introduction](#)

[Conclusions](#)

[References](#)

[Tables](#)

[Figures](#)

[⏪](#)

[⏩](#)

[◀](#)

[▶](#)

[Back](#)

[Close](#)

[Full Screen / Esc](#)

[Printer-friendly Version](#)

[Interactive Discussion](#)



Intrieri, E., Gigli, G., Nocentini, M., Lombardi, L., Mugnai, F., and Casagli, N.: Sinkhole monitoring early warning an experimental and successful GB-InSAR application, *Geomorphology*, 241, 304–314, 2015.

Lollino, P., Giordan, D., and Allasia, P.: The Montaguto earthflow: a back-analysis of the process of landslide propagation, *Eng. Geol.*, 170, 66–79, 2014.

Peck, R. B.: Advantages and limitations of the observational method in applied soil mechanics, *Géotechnique*, 19, 171–187, 1969.

Tarchi, D., Ohlmer, E., and Sieber, A. J.: Monitoring of structural changes by radar interferometry, *Research in Nondestructive Evaluation*, 9, 213–225, 1997.

Tarchi, D., Rudolf, H., Luzi, G., Chiarantini, L., Coppo, P., and Sieber, A. J.: SAR interferometry for structural changes detection: a demonstration test on a dam, in: *Proceedings IGARSS, 28 June–2 July 1999, Hamburg, 1522–1524, 1999.*

Tarchi, D., Casagli, N., Fanti, R., Leva, D., Luzi, G., Pasuto, A., Pieraccini, M., and Silvano, S.: Landslide monitoring by using ground-based SAR interferometry: an example of application to the Tessina landslide in Italy, *Eng. Geol.*, 68, 15–30, 2003a.

Tarchi, D., Casagli, N., Moretti, S., Leva, D., and Sieber, A. J.: Monitoring landslide displacements by using ground-based radar interferometry: application to the Ruinon landslide in the Italian Alps, *J. Geophys. Res.*, 108, 10.1–10.14, 2003b.

Ventura, G., Vilardo, G., Terranova, C., Bellucci and Sessa, E.: Tracking and evolution of complex active landslides by multi-temporal airborne LiDAR data: the Montaguto landslide (Southern Italy), *Remote Sens. Environ.*, 115, 3237–3248, doi:10.1016/j.rse.2011.07.007, 2011.

Zebker, H. A. and Goldstein, R. M.: Topographic mapping from interferometric synthetic aperture radar observations, *J. Geophys. Res.*, 91, 4993–4999, 1986.

GB-InSAR monitoring and OM for landslide emergency management

F. Ferrigno et al.

Table 1. Operational parameters list, set up for the Montaguto landslide monitoring.

Rail length	2.7 m
Minimum observed area distance	800 m
Maximum observed area distance	4000 m
Displacement estimate accuracy	0.5–0.7 mm
Theoretical resolution in range (constant)	~ 3.5 m
Theoretical resolution in azimuth a 800 m	~ 3 m
Theoretical resolution in azimuth a 2000 m	~ 7 m
Theoretical resolution in azimuth a 4000 m	~ 14 m
Scan time interval	3.5 min

[Title Page](#)

[Abstract](#)

[Introduction](#)

[Conclusions](#)

[References](#)

[Tables](#)

[Figures](#)



[Back](#)

[Close](#)

[Full Screen / Esc](#)

[Printer-friendly Version](#)

[Interactive Discussion](#)



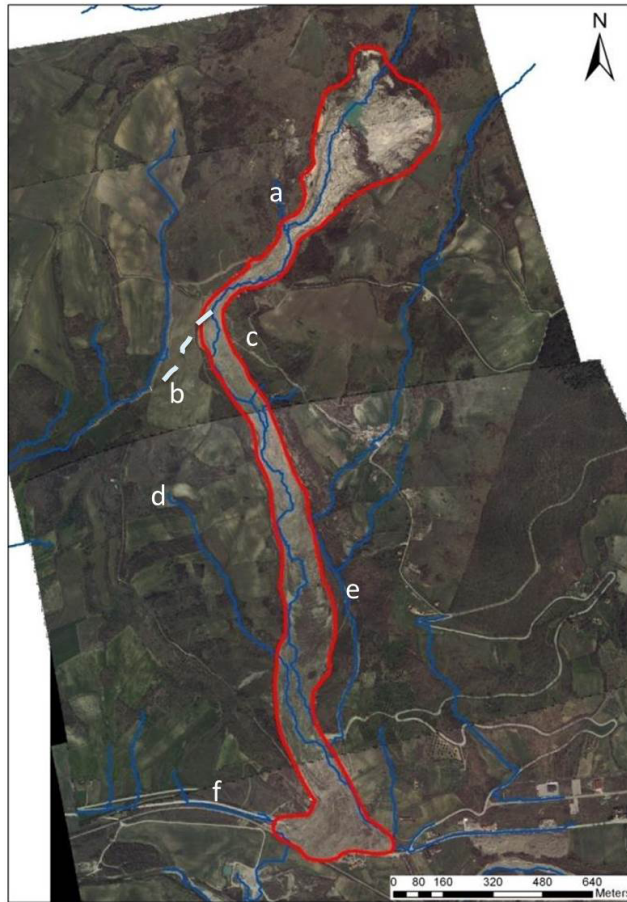


Figure 2. Montagna Creek deviation into the landslide zone occurred in 1990. **(a)** Montagna Creek; **(b)** previous natural channel; **(c)** Channel deviation; **(d)** Tre Confini stream; **(e)** Rio Nocelle stream and **(f)** Cervaro creek.

GB-InSAR monitoring and OM for landslide emergency management

F. Ferrigno et al.

[Title Page](#)

[Abstract](#)

[Introduction](#)

[Conclusions](#)

[References](#)

[Tables](#)

[Figures](#)

⏪

⏩

◀

▶

[Back](#)

[Close](#)

[Full Screen / Esc](#)

[Printer-friendly Version](#)

[Interactive Discussion](#)



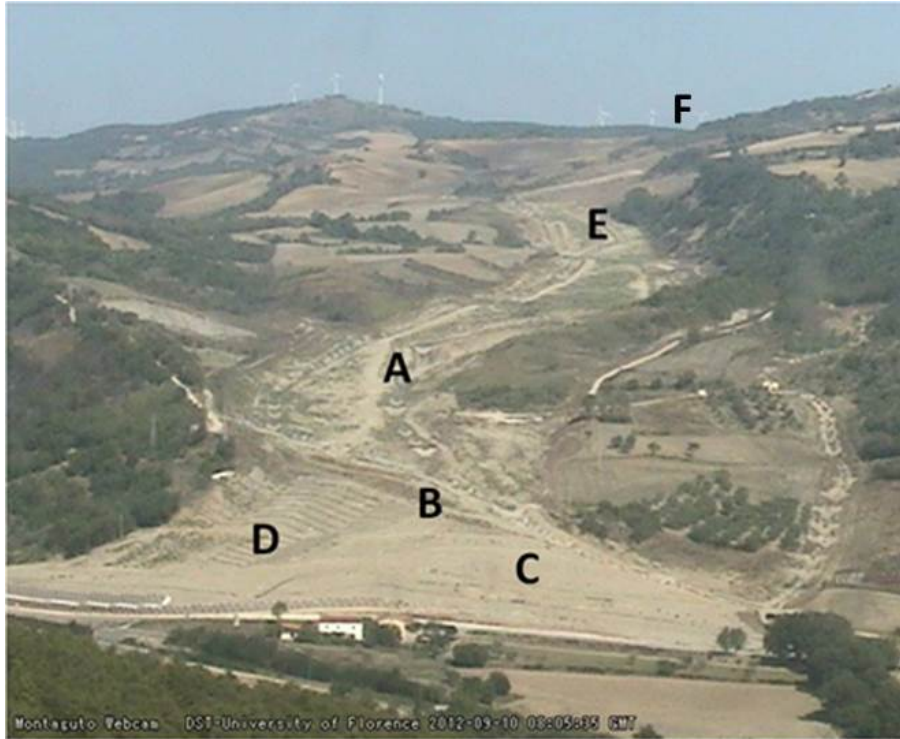


Figure 3. Optical image of the Montaguto earthflow from the GB-InSAR installation point (acquisition time: 1 June 2010 – 8:02 a.m.). Capital letters indicate sectors selected for velocity estimation.

GB-InSAR monitoring and OM for landslide emergency management

F. Ferrigno et al.

[Title Page](#)

[Abstract](#)

[Introduction](#)

[Conclusions](#)

[References](#)

[Tables](#)

[Figures](#)

[⏪](#)

[⏩](#)

[◀](#)

[▶](#)

[Back](#)

[Close](#)

[Full Screen / Esc](#)

[Printer-friendly Version](#)

[Interactive Discussion](#)



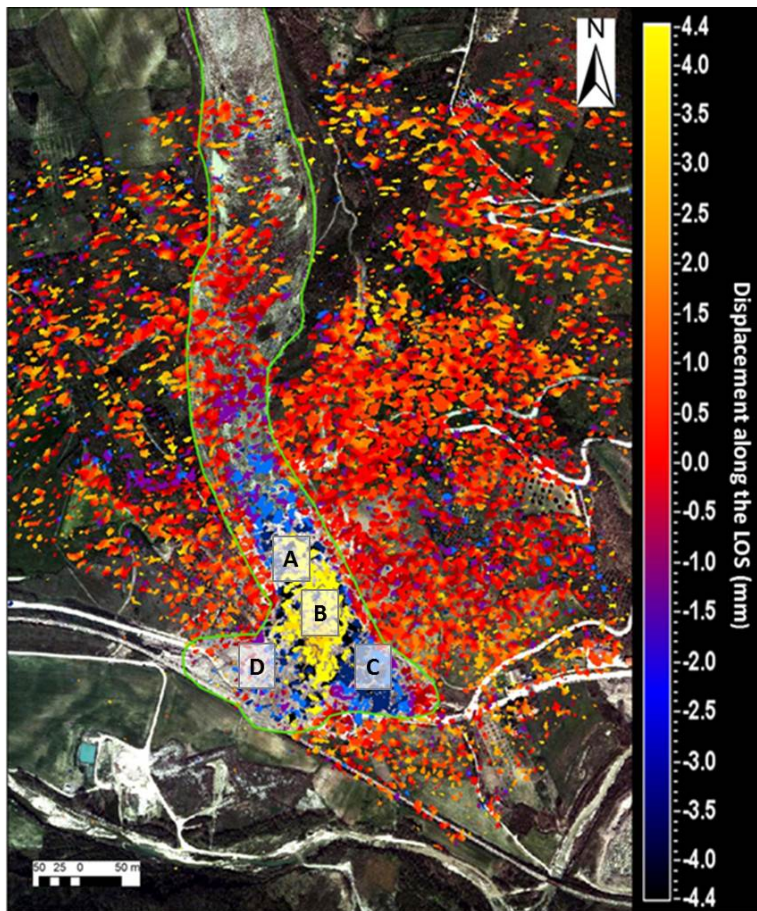


Figure 4. Interferogram with the monitored sectors covering a period spanning 4 min from 9:04 to 09:08 p.m., 1 May 2010. Negative values indicate movement towards the instrument.

GB-InSAR monitoring and OM for landslide emergency management

F. Ferrigno et al.

[Title Page](#)

[Abstract](#)

[Introduction](#)

[Conclusions](#)

[References](#)

[Tables](#)

[Figures](#)

[⏪](#)

[⏩](#)

[◀](#)

[▶](#)

[Back](#)

[Close](#)

[Full Screen / Esc](#)

[Printer-friendly Version](#)

[Interactive Discussion](#)



GB-InSAR monitoring and OM for landslide emergency management

F. Ferrigno et al.

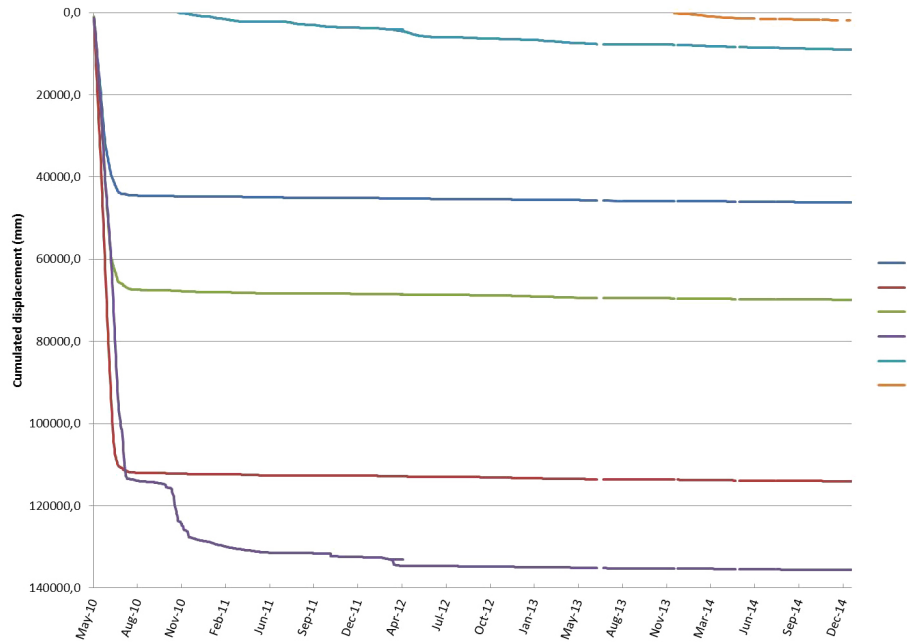


Figure 6. Time history of recorded displacements at selected points (monitored sectors).

[Title Page](#)
[Abstract](#) [Introduction](#)
[Conclusions](#) [References](#)
[Tables](#) [Figures](#)
⏪ ⏩
◀ ▶
[Back](#) [Close](#)
[Full Screen / Esc](#)
[Printer-friendly Version](#)
[Interactive Discussion](#)



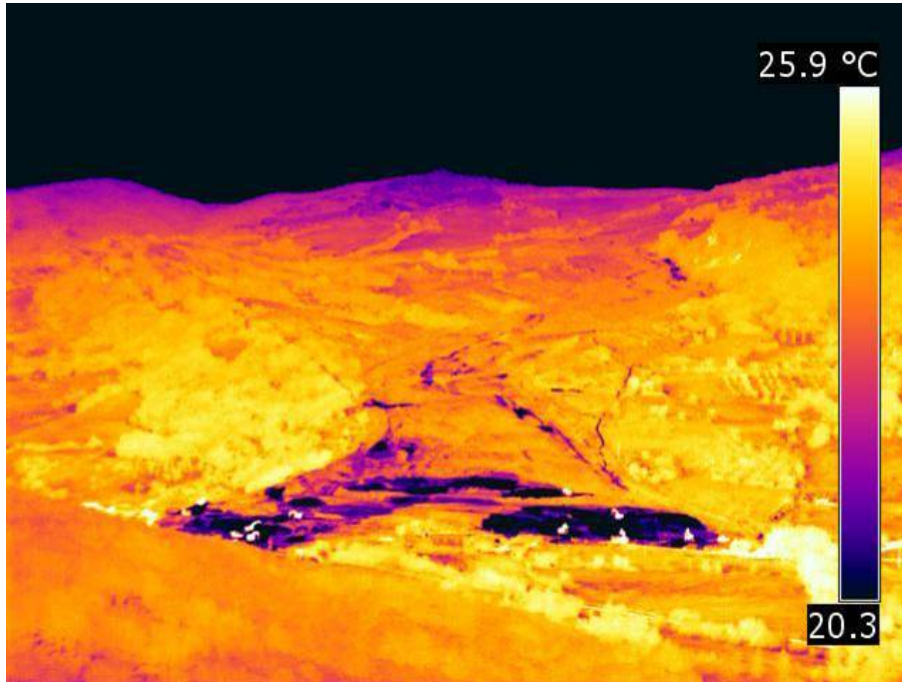


Figure 7. Thermal image of the Montaguto earthflow from the GB-InSAR installation point (acquisition time: 11 May 2010 – 11 a.m.); dark pixels correspond to wet areas.

GB-InSAR monitoring and OM for landslide emergency management

F. Ferrigno et al.

[Title Page](#)

[Abstract](#)

[Introduction](#)

[Conclusions](#)

[References](#)

[Tables](#)

[Figures](#)

[⏪](#)

[⏩](#)

[◀](#)

[▶](#)

[Back](#)

[Close](#)

[Full Screen / Esc](#)

[Printer-friendly Version](#)

[Interactive Discussion](#)



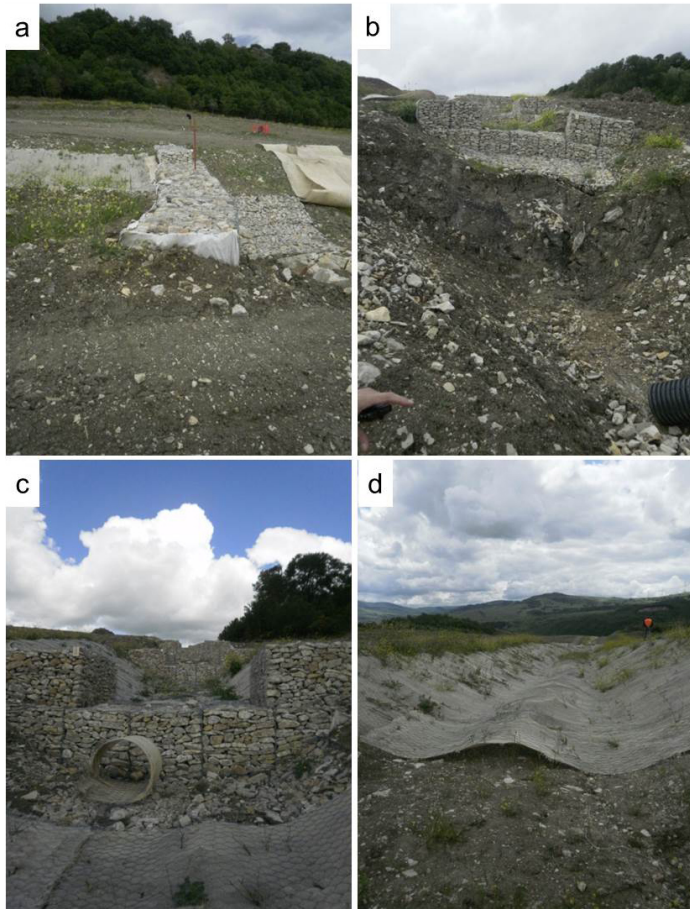


Figure 8. Damage to the weirs (**a**, **b** and **c**) and to the channel geotextile filter (**d**) is shown in these photos. It was caused by the slow and constant displacement located in the E sector and documented by interferometric data (May 2012).

GB-InSAR monitoring and OM for landslide emergency management

F. Ferrigno et al.

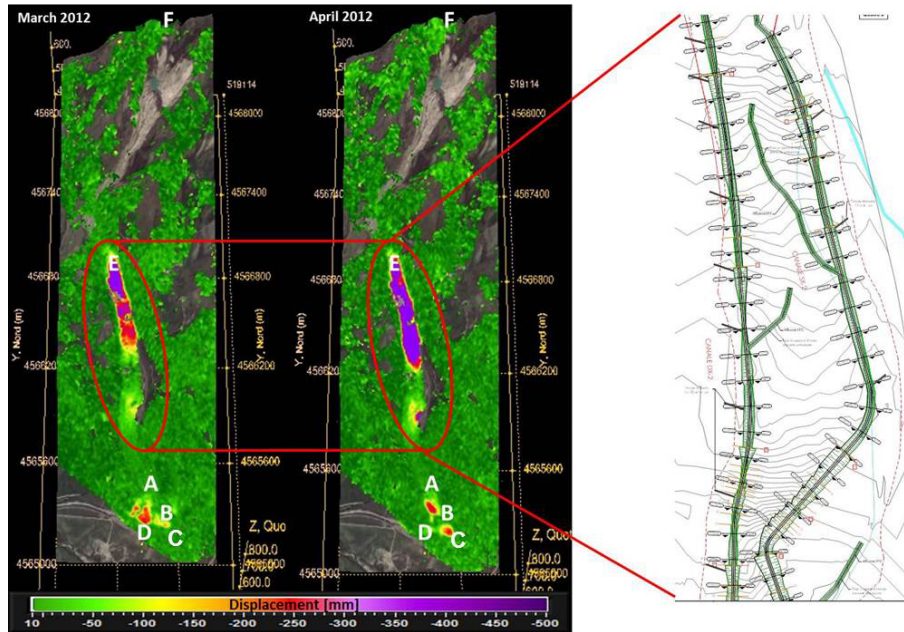


Figure 9. Monthly cumulated maps refer March and April 2011 show the interferometric evidence of the deformation phenomena affecting the E Sector and the subsequent design variant.

[Title Page](#)

[Abstract](#)

[Introduction](#)

[Conclusions](#)

[References](#)

[Tables](#)

[Figures](#)



[Back](#)

[Close](#)

[Full Screen / Esc](#)

[Printer-friendly Version](#)

[Interactive Discussion](#)



GB-InSAR monitoring and OM for landslide emergency management

F. Ferrigno et al.

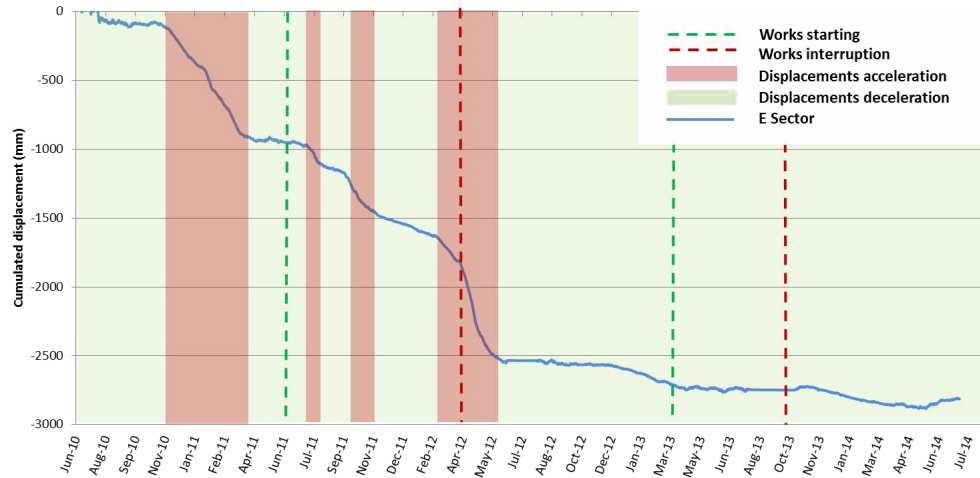


Figure 10. Cumulated displacement recorded at the E sector and works phases distribution among the time.

[Title Page](#)

[Abstract](#)

[Introduction](#)

[Conclusions](#)

[References](#)

[Tables](#)

[Figures](#)



[Back](#)

[Close](#)

[Full Screen / Esc](#)

[Printer-friendly Version](#)

[Interactive Discussion](#)



**GB-InSAR monitoring
and OM for landslide
emergency
management**

F. Ferrigno et al.

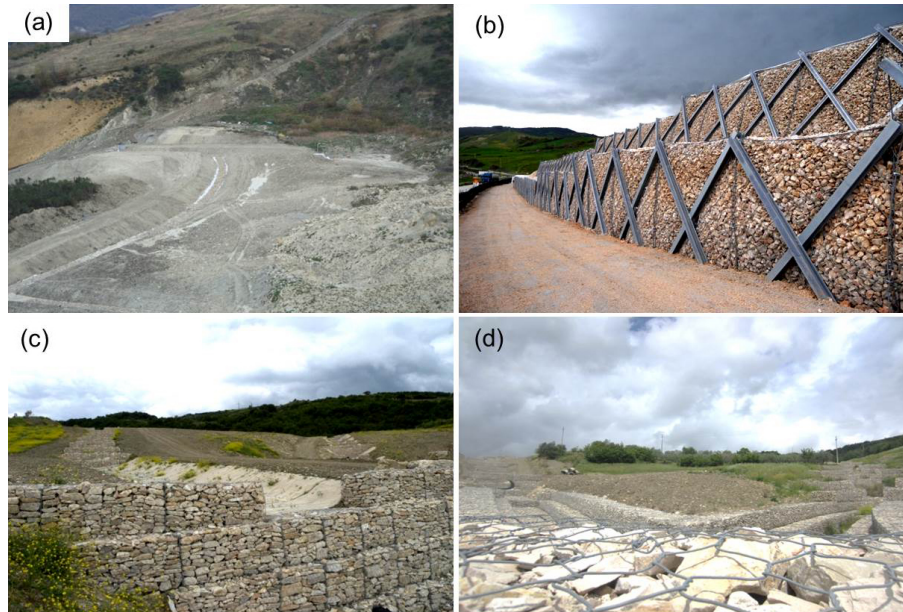


Figure 11. Images showing the main important completed works. **(a)** Drainage systems at the bottom of the main scarp; **(b)** gabions rock toe buttress and drain; **(c)** surface drains coupled with deep trench drains; **(d)** Rio Nocelle water channelling.

[Title Page](#)[Abstract](#)[Introduction](#)[Conclusions](#)[References](#)[Tables](#)[Figures](#)[◀](#)[▶](#)[◀](#)[▶](#)[Back](#)[Close](#)[Full Screen / Esc](#)[Printer-friendly Version](#)[Interactive Discussion](#)