



Scenario based
approach for multiple
source Tsunami
Hazard assessment
for Sines, Portugal

M. Wronna et al.

Scenario based approach for multiple source Tsunami Hazard assessment for Sines, Portugal

M. Wronna¹, R. Omira^{1,3}, and M. A. Baptista^{1,2,3}

¹Instituto Português do Mar e da Atmosfera, IPMA, I. P., Lisbon, Portugal

²Instituto Superior de Engenharia de Lisboa, Lisbon, Portugal

³Instituto Dom Luiz, University of Lisbon, IDL, Lisbon, Portugal

Received: 8 June 2015 – Accepted: 7 July 2015 – Published: 7 August 2015

Correspondence to: M. Wronna (martinwronna@gmail.com)

Published by Copernicus Publications on behalf of the European Geosciences Union.

[Title Page](#)

[Abstract](#)

[Introduction](#)

[Conclusions](#)

[References](#)

[Tables](#)

[Figures](#)

[⏪](#)

[⏩](#)

[◀](#)

[▶](#)

[Back](#)

[Close](#)

[Full Screen / Esc](#)

[Printer-friendly Version](#)

[Interactive Discussion](#)



Abstract

In this paper, we present a scenario-based approach for tsunami hazard assessment for the city and harbour of Sines – Portugal, one of the test-sites of project ASTARTE. Sines holds one of the most important deep-water ports which contains oil-bearing, petrochemical, liquid bulk, coal and container terminals. The port and its industrial infrastructures are facing the ocean southwest towards the main seismogenic sources. This work considers two different seismic zones: the Southwest Iberian Margin and the Gloria Fault. Within these two regions, we selected a total of six scenarios to assess the tsunami impact at the test site. The tsunami simulations are computed using NSWING a Non-linear Shallow Water Model With Nested Grids. In this study, the static effect of tides is analysed for three different tidal stages MLLW (mean lower low water), MSL (mean sea level) and MHHW (mean higher high water). For each scenario, inundation is described by maximum values of wave height, flow depth, drawback, runup and inundation distance. Synthetic waveforms are computed at virtual tide gauges at specific locations outside and inside the harbour. The final results describe the impact at Sines test site considering the single scenarios at mean sea level, the aggregate scenario and the influence of the tide on the aggregate scenario. The results confirm the composite of Horseshoe and Marques Pombal fault as the worst case scenario. It governs the aggregate scenario with about 60 % and inundates an area of 3.5 km².

1 Introduction

Tsunamis are low frequency but high impact hazards for coastal societies. The 26 December 2004 Indian Ocean and the 11 March 2011 Tohoku striking tsunami events raised awareness due to the enormous loss of life and property. The Indian Ocean event in 2004 demonstrated the need for operational early warning systems around the world. However, seven years later, the 2011 Tohoku event showed the limitations of the scientific knowledge concerning tsunami sources, coastal impacts, and mitigation

NHESSD

3, 4663–4693, 2015

Scenario based approach for multiple source Tsunami Hazard assessment for Sines, Portugal

M. Wronna et al.

[Title Page](#)

[Abstract](#)

[Introduction](#)

[Conclusions](#)

[References](#)

[Tables](#)

[Figures](#)

[⏪](#)

[⏩](#)

[⏴](#)

[⏵](#)

[Back](#)

[Close](#)

[Full Screen / Esc](#)

[Printer-friendly Version](#)

[Interactive Discussion](#)

Scenario based approach for multiple source Tsunami Hazard assessment for Sines, Portugal

M. Wronna et al.

[Title Page](#)

[Abstract](#)

[Introduction](#)

[Conclusions](#)

[References](#)

[Tables](#)

[Figures](#)

[⏪](#)

[⏩](#)

[◀](#)

[▶](#)

[Back](#)

[Close](#)

[Full Screen / Esc](#)

[Printer-friendly Version](#)

[Interactive Discussion](#)

measures. Since then, in the NEAM region (North East Atlantic, Mediterranean and connected seas) many efforts have been addressed to understand better the tsunami-genic sources and to improve the tsunami hazard assessment capabilities. Within the NEAM region, the Gulf of Cadiz is among the most tsunami hazardous areas. The historical reports include events dated back to 60 BC (Mendonça, 1758; Baptista and Miranda, 2009; Kaabouben et al., 2009), but the geological evidence show high energy events back to 7000 years BP (Luque et al., 2001).

The Portuguese coast is highly exposed to tsunami threat from local and regional active tectonic sources. The main tsunamigenic area is the SWIM (South West Iberia Margin), with a number of considerable SE dipping inverse faults (Zitellini et al., 2009; Matias et al., 2013). The most severe tsunami was the 1 November 1755 caused by the Lisbon earthquake with an estimated magnitude of 8.5 by Martins and Mendes Victor (1990). This magnitude was more recently re-evaluated by Solares and Arroyo (2004) with an estimate of 8.5 ± 0.3 . The tsunami hit the entire northern Atlantic basin with huge impact in Iberia and Morocco (Baptista and Miranda, 2009). In the 20th century, the 28 February 1969 earthquake with a magnitude of 7.9 (Fukao, 1973) caused a small tsunami of 0.5 m amplitude in Lagos and Cascais (Baptista et al., 1992; Baptista and Miranda, 2009). The tsunami waves hit the coast circa 03:00 UTC in low tide conditions (Baptista et al., 1992) but no significant damage was observed.

The second tsunamigenic zone to be considered is the Gloria Fault. The Gloria fault is a segment of the Eurasia–Nubia plate boundary. It is a large strike slip fault, located between 24 and 19° W, with scarce seismic activity but was nonetheless the location of several large events during the 20th Century, in particular the 25 November 1941 earthquake, a submarine strike-slip event of magnitude 8.3–8.4 (Gutenberg and Richter, 1949) and the 26 May 1975 with magnitude 7.9 (Lynnes and Ruff, 1975; Grimson and Chen, 1986).

In recent years, a considerable number of tsunami hazard assessment studies were published for the North East Atlantic area. Most of these studies focus on the tsunami impact in the Gulf of Cadiz using a scenario based approach namely: Lima et al. (2010),

Omira et al. (2010, 2011, 2013), Atillah et al. (2011), Baptista et al. (2011a), Renou et al. (2011), Benchekroun et al. (2013) and Lemos et al. (2014). Recently, Omira et al. (2014) published a probabilistic tsunami hazard assessment for the North East Atlantic.

5 In this study, we use a Deterministic Tsunami Hazard Assessment (DTHA) approach to evaluate the tsunami impact in Sines. The study area contains the country's most important deep water port which is connected to big industrial complexes by fragile infrastructure such as pipelines and conveyor belts. In summer the city is a popular tourist destination.

10 The DTHA approach consists of studying the impact of specific tsunami events – tsunami scenarios – in the study area. The impact is described in terms of maximum wave height (MWH), maximum flow depth (MFD), maximum runup (MRU) and maximum drawback (MDB). We further built the aggregate scenario plotting the MWH in each cell considering the contribution of the individual scenarios (Tinti et al., 2011).

15 The final results are presented in integrated hazard maps for all the considered and the aggregate scenario. Each integrated hazard map consists of MWH, MFD, MRU and MDB of the corresponding scenario. The static effect of tides is analysed for three different tidal stages mean lower low water (MLLW), mean sea level (MSL), and mean higher high water (MHHW). Further we present the contribution of each scenario to the
20 aggregate tsunami impact at MSL condition.

2 Study area and digital elevation model

Sines is a city located on the west littoral margin of the Iberian Peninsula about 150 km south of Lisbon (Fig. 1a). The study area includes the city of Sines and parts of the surrounding municipality covering a coastline of about 35 km. The city has approximately
25 15 000 inhabitants (Instituto Nacional de Estatística, 2011) and about 5000 floating population because of economic and touristic purpose.

Scenario based approach for multiple source Tsunami Hazard assessment for Sines, Portugal

M. Wronna et al.

[Title Page](#)

[Abstract](#)

[Introduction](#)

[Conclusions](#)

[References](#)

[Tables](#)

[Figures](#)

[I◀](#)

[▶I](#)

[◀](#)

[▶](#)

[Back](#)

[Close](#)

[Full Screen / Esc](#)

[Printer-friendly Version](#)

[Interactive Discussion](#)



Scenario based approach for multiple source Tsunami Hazard assessment for Sines, Portugal

M. Wronna et al.

[Title Page](#)

[Abstract](#)

[Introduction](#)

[Conclusions](#)

[References](#)

[Tables](#)

[Figures](#)

[⏪](#)

[⏩](#)

[◀](#)

[▶](#)

[Back](#)

[Close](#)

[Full Screen / Esc](#)

[Printer-friendly Version](#)

[Interactive Discussion](#)

Sines plays a major role in terms of energy production and storage. There are 2 great production centres of oil and gas industry (GALP refinery and Repsol YPF petrochemical industrial complex) which are connected via pipelines to oil-bearing and petrochemical terminal of Sines harbour (Câmara Municipal de Sines, 2007). The harbour is the country's most important deep water port (with 28 m depth) situated south of the city centre and consists of 5 terminals: liquid bulks, liquid natural gas, petrochemical, container and multipurpose; as well as fishing and leisure ports (Porto de Sines, 2014). The liquid natural gas terminal (LNG) contains facilities for loading and unloading processes of methane carriers, expedition facilities at LNG terminal depot, three LNG storage tanks, LNG processing facilities and natural gas dispatch facilities for the pipeline connecting the Sines LNG terminal to the Natural Gas Transport Network. At the multipurpose terminal coal is stored in stockpiles and is transported by a conveyor belt to Sines thermoelectric power plant. The power plant uses seawater for cooling of the generators which is captured and returned at the intake and restitution points close to São Torpes beach (Fig. 1b). The majority of the harbour facilities and big areas of the power plant are situated in possible inundation area below the 25 m topographic contour. The liquefied natural gas storage deposits is located right behind the port. In case of a destructive tsunami, facilities or leaking pipelines raise the danger of explosion and may cause an environmental disaster.

The study area limits are East to West from $8^{\circ}47'00''$ to $8^{\circ}55'00''$ and North to South from $37^{\circ}58'00''$ to $37^{\circ}55'00''$. In the northern part the landscape is designed by the influence of the magmatic batholith of Sines with a steep and rocky seafront. On the south westernmost part of the rocky outcrops begins the area of the port. The main jetty is facing south with a maximum elevation of 15 m a.m.s.l. and a width of 10 m (Fig. 1b). The liquid bulks terminal and petrochemical terminal are protected by the jetty against strong swell reaching the Portuguese coast mainly from northwest. The smaller jetties protect the fishing and leisure ports, which also protect the shell-shaped beach "Vasco da Gama" (see Fig. 1b). Northwards is located the city centre and the majority of domestic property on the top of the batholith with altitudes higher than 25 m a.s.l.

Scenario based approach for multiple source Tsunami Hazard assessment for Sines, Portugal

M. Wronna et al.

[Title Page](#)

[Abstract](#)

[Introduction](#)

[Conclusions](#)

[References](#)

[Tables](#)

[Figures](#)

[⏪](#)

[⏩](#)

[◀](#)

[▶](#)

[Back](#)

[Close](#)

[Full Screen / Esc](#)

[Printer-friendly Version](#)

[Interactive Discussion](#)

Further east, the remaining terminals: multipurpose, container and natural gas protected by a recently enhanced jetty of approximately 2.5 km length (see Fig. 1b). The container terminal is currently under construction due to expansion at the easternmost area of the port exposing new economic value to tsunami threat. Further southeast at the coast are situated the jetties to protect the intake and restitution points of the EDP thermoelectric power plant. Right beyond the jetties southwards begins the popular highly visited beach of “São Torpes” which is already a part of the natural park “Costa Vicentina” (see Fig. 1b). The main port areas and Vasco da Gama beach have their coastline facing southwards. The main tsunamigenic sources are located south of the study area. Due to its openness and exposure to the sea, the impact of tsunamis and other marine hazards like sea level rise are of great concern for the area.

In order to guarantee a good representation of the study area, we built a high-resolution Digital Elevation Model (DEM). We combined three different datasets and set them to the same reference system using GIS tools (Geographic Information System). We validated the final dataset using real time kinetic GPS on field trips. The DEM is crucial for computation of inundation on the dry land and near shore propagation.

Different types of datasets were used: a set of high resolution LIDAR dataset (Direção-Geral do Território, 2011), a bathymetric model (Instituto Hidrográfico de Portugal, 2012), and a nautical chart (Instituto Hidrográfico de Portugal, 2010). The LIDAR dataset of 2011 has a resolution of 2 m. The data is available in PT-TM06/ETRS89 projection and referenced to the altimetric datum of Cascais 2.08 m above hydrographic zero. The dataset of the bathymetric model contains a grid based point information 100 m spacing based on hydrographic surveys. In the overlapping areas of LIDAR dataset and the bathymetric model preference has been given to the more recent and higher resolution LIDAR dataset. For further improvement, the nautical chart of Sines (the nautical chart of Sines consists of 2 different charts one showing a more detailed view of the port with a scale of 1 : 12 500 and the general chart of the test site with a scale of 1 : 30 000) was scanned, geo-referenced, and digitized. Depth and altimetry data of the bathymetric model and the nautical charts are referenced to the hydro-

Scenario based approach for multiple source Tsunami Hazard assessment for Sines, Portugal

M. Wronna et al.

[Title Page](#)

[Abstract](#)

[Introduction](#)

[Conclusions](#)

[References](#)

[Tables](#)

[Figures](#)

[⏪](#)

[⏩](#)

[◀](#)

[▶](#)

[Back](#)

[Close](#)

[Full Screen / Esc](#)

[Printer-friendly Version](#)

[Interactive Discussion](#)



graphic zero. All data was referenced to MSL which lays 2 m above hydrographic zero in Sines. In order to validate the final datasets we used field surveyed data points with GPS-RTK (Global Position System Real Time Kinetic). In order to fill gaps of the LIDAR data we used GPS-RTK to collect data to implement a recently constructed extension of a jetty not yet present in the datasets. After combination, validation and adaption of the existing datasets a grid representing the final study area with 10 m resolution has been computed. The resulting DEM properly represents Sines test site, especially the near shore areas, as LIDAR dataset is of very high resolution. The 10 m grid represents small rocky outcrops of the batholith in between Vasco da Gama beach and the leisure port. Other features like the connection to the main jetty in front of the multiuse-, liquid natural gas- and container terminal or the jetty at the leisure port suffer from the low resolution.

3 Numerical model and nested grids

Numerical modelling of tsunamis is commonly divided into three stages: generation, propagation, and inundation. We use an in-house developed and benchmarked numerical code NSWING (Non-linear Shallow Water Model with Nested Grids) (Miranda et al., 2014) to model the tsunami. The model supposes an instant seabed deformation that has been rendered using the half-space elastic theory (Okada, 1985) embedded in Mirone suite (Luis, 2007). The vertical sea bottom deformation is assumed to be equal to the free surface deformation and transferred to the ocean surface.

The code solves linear and non-linear approximations of shallow water equations (SWEs) to calculate tsunami propagation and inundation in a Cartesian or spherical reference system. In the deep ocean nonlinear convective inertia forces are of secondary order as waves travel with amplitudes much smaller than water depths. When the tsunami enters shallow coastal areas, the non-linear convective inertia force and bottom friction become increasingly important. We applied non-linear SWEs approximations in all instances, for deep-ocean, near-shore and on-shore propagation.

Scenario based approach for multiple source Tsunami Hazard assessment for Sines, Portugal

M. Wronna et al.

Title Page	
Abstract	Introduction
Conclusions	References
Tables	Figures
⏪	⏩
◀	▶
Back	Close
Full Screen / Esc	
Printer-friendly Version	
Interactive Discussion	

NSWING employs a dynamically coupled system of nested grids and solves SWEs using an explicit staggered finite leapfrog numerical scheme for linear terms and an upwind scheme for nonlinear terms. The code further applies a radiating boundary condition, allowing wave motion pass from one domain to other, through boundaries with very small reflections. A moving boundary algorithm (Liu et al., 1995), based on “wet” and “dry” cells, is adopted to track shoreline movement while inundation.

Propagation and behaviour of tsunamis change because of varying bathymetry when entering coastal areas. To model the impact in Sines we implement a dynamically coupled system of nested grids. We interpolated the half minute North Atlantic grid (GEBCO, 2014) to 640 m resolution for the parent grid. Using four layers and applying a refinement factor of 4 we achieved 10 m final resolution in the DEM.

The amplitude of the tide in south-west Portugal is above 2 m and must be taken into account in Sines (Baptista et al., 2011a). To study the tide effect, the tidal variation of the last three years have been considered. We used the values of Mean High Water (MHW) and Mean Low Water (MLW) from 2012 to 2014 and calculated the mean to obtain the MHHW and MLLW respectively and referenced them to MSL. The MHHW is 1.22 m above the MSL and the MLLW 0.88 m underneath the MSL. These values have been subtracted and added respectively to the established DEM. For each designed scenario we ran the model in MHHW, MSL and MLLW conditions to study the static influence of the tide and is presented in the aggregate scenario (Antunes, 2014).

4 Tsunamigenic scenarios

To design the tsunami scenarios we use the main seismogenic source zones and the associated Maximum Credible Earthquake (MCE) (Miranda et al., 2008; Omira et al., 2009). We used the typical fault (TF) for each MCE. In this study we use the TF presented in Omira et al. (2009).

The seismogenic sources used here are SWIM and Gloria. For this study we considered four TFs in the SWIM area and their MCE scenarios to reproduce initial condition



for tsunami propagation namely: the Cadiz Wedge Fault (CWF), the Gorringe Bank Fault (GBF), the Horseshoe Fault (HSF) and the Marques Pombal Fault (MPF) (Fig. 2). Additionally we use a seismogenic scenario consisting of a composite rupture of HSF and MPF (HSMPF), believed to have caused the 1 November 1755 event (Ribeiro et al., 2006).

The major tsunami event in the SWIM is the one associated with the November 1755 earthquake and the exact source remains unknown. Numerous studies and campaigns have been carried out in order to solve the quest of the 1 November 1755 tsunamis source. Data (multi-channel reflection seismic, refraction seismic, multibeam swath Bathymetry) has been gathered to reveal more accurate information of the tectonic in the SWIM. These investigation in the SWIM revealed numerous geological evidences of the used TFs. Several authors proposed distinct sources for this event.

Johnston (1996) suggested the GBF as a possible candidate source of the 1 November 1755 event through scale comparison of isoseismal maps with the 28 February 1969 event. Using tsunami backward ray tracing methods Baptista et al. (1998) suggested a source location for the 1755 tsunami closer to the Portuguese coast. Zitellini et al. (1999) found an active thrust fault, the MPF through interpretation of multi-channel seismic data. Gutscher et al. (2002) concluded that the identified active subduction, the CWF is a candidate source for 1755 event and must be considered in natural hazard assessments. Further neotectonic structures and deformed seafloor sediments at the HSF also show clusters with shallow seismicity (Gràcia et al., 2003). Some authors suggest to consider multiple fault rupture scenarios to explain the high magnitude observed in 1755 (Zitellini et al., 2001; Gràcia et al., 2003; Ribeiro et al., 2006; Mendes-Victor et al., 2005). Nevertheless the exact source of the 1755 Lisbon event is still a matter of discussion. These uncertainties related to 1755 source and the tectonic processes acting in the SWIM confirm the need of systematic tsunami hazard assessment in surrounding areas.

The Gloria zone is our far field source area. The Gloria fault is a transform fault running from 24 to 19° W (Laughton and Witmarsh, 1974). Three strong magnitude

Scenario based approach for multiple source Tsunami Hazard assessment for Sines, Portugal

M. Wronna et al.

[Title Page](#)

[Abstract](#)

[Introduction](#)

[Conclusions](#)

[References](#)

[Tables](#)

[Figures](#)

[⏪](#)

[⏩](#)

[◀](#)

[▶](#)

[Back](#)

[Close](#)

[Full Screen / Esc](#)

[Printer-friendly Version](#)

[Interactive Discussion](#)



Discussion Paper | Discussion Paper | Discussion Paper | Discussion Paper | Discussion Paper

earthquakes occurred in the last 130 years: 22 December 1884 (Moreira, 1984), 25 November 1941 – Magnitude 8.3 (Gutteber and Richter, 1949; Moreira, 1984) and 25 May 1975 – magnitude 7.9 (Lynnes and Ruff, 1975; Grimson and Chen, 1986). The 25 November 1941 and the 26 May 1975 produced small tsunamis recorded in the tide stations in the North East Atlantic basin (Debrach, 1946; Moreira, 1984; Baptista et al., 1992; Baptista and Miranda, 2009). The 25 November 1941 epicenter location and the focal mechanism are presented in Baptista et al. (2011b). We used these parameters to draw a 1941 like scenario for the Gloria source zone. The TF parameters are presented in Table 1 and the fault is presented in Fig. 3.

5 Results

We ran a total of eighteen simulations. For each typical fault we considered three tide conditions: Mean Lower Low Water (MLLW), Mean Sea Level (MSL) and Mean Higher High Water (MHHW). The results are presented in integrated maps of maximum wave height (MWH), maximum flow depth (MFD), maximum drawback (MDB) and maximum runup (MRU) (Fig. 4a–e). For the scenarios at MSL, we additionally present synthetic waveforms (Figs. 5 and 6) at chosen positions (Fig. 1b).

In Fig. 7 we present the aggregate scenario considering all calculated models. Figure 8 shows the inundation and the drawback limits considering the aggregate scenarios at the three tide conditions.

5.1 MSL results

The analysis of Figs. 4 and 5 shows that all SWIM scenarios produce heavier inundation and drawback in comparison to the Gloria fault scenario. The Gloria scenario produces MWH values of approximately 1 m while the SWIM scenarios produce MWH above 10 m. Figures 4–6 present results of the individual scenarios and their absolute values are summarized in Table 2. The HSMPF scenario, corresponding to the worst

Scenario based approach for multiple source Tsunami Hazard assessment for Sines, Portugal

M. Wronna et al.

[Title Page](#)

[Abstract](#)

[Introduction](#)

[Conclusions](#)

[References](#)

[Tables](#)

[Figures](#)

◀

▶

◀

▶

[Back](#)

[Close](#)

[Full Screen / Esc](#)

[Printer-friendly Version](#)

[Interactive Discussion](#)



case scenario, produces 18.6 m of MWH and 3.47 km² of inundated area. Detailed analysis of Fig. 4d shows flow depths greater than 0.5 m in 90 % of the inundation area.

The GBF and HSF scenarios, with MWH above 15 m, also produce inundation above 3 km² (cf. Table 2 and Fig. 4b and c). The remaining SWIM scenarios (CWF and MPF) still produce MWH above 10 m and leave more than 2 km² inundated.

Among the SWIM scenarios, the MPF produces the weakest impact in Sines but still with MWH above 10 m (cf. Fig. 4e). MRU, up to 19.3 m occurs during the HSF scenario at the south of the test site. All SWIM scenarios produce sufficient drawback (see blue lines in Fig. 4a–e) to leave the intake and restitution points of the thermoelectric power plant dry. MDB occurs during the composite tsunami model HSMPF. The Gloria scenario produces 1.2 m MWH in certain areas and inundates low lying areas such as beaches. The flooded area of the Gloria scenario is less than 0.2 km² and the area at the intake and restitution points does not stay dry (Fig. 6a and Table 2).

The analysis of the synthetic waveforms at the virtual stations shows similar periods and tsunami travel time (see Fig. 5) for all SWIM scenarios. First arrival occurs in all records at point P3 (blue curves in Figs. 5 and 6b). Clearly distinguishable are the records for the Gloria scenario presented in Fig. 6b which shows an arrival time of about 85 min after initial sea surface displacement. The maximum amplitude is about 0.4 m with a period of approximately 10 min (Fig. 6b). The record in tide gauge point P2, at 5.6 m depth right in front of the intake and restitution points, confirms that no considerable drawback is happening throughout the event (Fig. 6b). The records of the SWIM scenarios GBF, HSF, HSMPF, MPF show periods of 15 to 20 min and for the CWF approximately 25 min. Maximum amplitudes are obtained at the tide gauge P2 for the tsunamis produced by CWF at the 3rd wave, HSF and HSMPF at the 1st and 3rd wave, respectively. At point P2 waveforms indicate that the cell stays at least once dry for all SWIM scenarios (Fig. 5). Attenuation is visible for all scenarios after 6 h runtime except for the Gloria scenario where attenuation occurs after 15 h.

Scenario based approach for multiple source Tsunami Hazard assessment for Sines, Portugal

M. Wronna et al.

[Title Page](#)

[Abstract](#)

[Introduction](#)

[Conclusions](#)

[References](#)

[Tables](#)

[Figures](#)

[⏪](#)

[⏩](#)

[◀](#)

[▶](#)

[Back](#)

[Close](#)

[Full Screen / Esc](#)

[Printer-friendly Version](#)

[Interactive Discussion](#)



5.2 The aggregate scenario and the influence of the tide

The aggregate scenario map depicts the extreme hazard values field point by taking the envelope of all individual scenarios. We present aggregate scenarios of MWH, MFD, MDB and MRU for the different tide conditions (Fig. 7).

5 The aggregate scenario map (Fig. 7), considering all stages of the tide, shows 4.8 km² MDB area and 4.1 km² maximum inundated area. MRU values over 20 m occur close to the cliffs at Vasco da Gama beach and are reached in MHHW condition. In other areas, such as behind the liquid bulks and petrochemical terminal and at the railway connection to the port, MRU values exceed 15 m. MWHs above 10 m have been
10 modelled along the entire coastline (Fig. 7). In high tide condition the inundation area is over 4 and 3.5 km² in low tide condition considering the aggregate scenario. Inundation area is 5 % bigger at MSL and 14 % at MHHW compared to MLLW (Fig. 8). MDB area is 16 % greater at MLLW and 11 % greater at MSL than in MHHW conditions (Fig. 8).
15 The flooded area at Vasco da Gama beach is not significantly bigger at MHHW as the area behind the beach is confined by the steep topography. Moreover Fig. 7 shows that the mean MFD values are about 1.5 m higher at MHHW than at MLLW in the area of the beach. Other areas behind the multipurpose and container terminal or at São Torpes beach show clearly greater inundation areas in high tide condition (Fig. 8). The limits of MDB and MRU for the aggregate scenario concerning MLLW, MSL and MHHW are
20 mapped in Fig. 8.

6 Discussion and conclusions

We ran a total of 18 scenarios to study the tsunami impact at Sines. Our results show that all SWIM scenarios cause severe inundation and drawback. To complement the integrated hazard maps of MWH, MFD, MDB and MRU we recorded synthetic waveforms at chosen points (see Fig. 1). The signals of the waveforms are diverse. This
25 fact may be explained due to differences in the TF parameters. Waveforms from HSF,

Scenario based approach for multiple source Tsunami Hazard assessment for Sines, Portugal

M. Wronna et al.

[Title Page](#)

[Abstract](#)

[Introduction](#)

[Conclusions](#)

[References](#)

[Tables](#)

[Figures](#)

[|◀](#)

[▶|](#)

[◀](#)

[▶](#)

[Back](#)

[Close](#)

[Full Screen / Esc](#)

[Printer-friendly Version](#)

[Interactive Discussion](#)



Scenario based approach for multiple source Tsunami Hazard assessment for Sines, Portugal

M. Wronna et al.

[Title Page](#)

[Abstract](#)

[Introduction](#)

[Conclusions](#)

[References](#)

[Tables](#)

[Figures](#)

[⏪](#)

[⏩](#)

[◀](#)

[▶](#)

[Back](#)

[Close](#)

[Full Screen / Esc](#)

[Printer-friendly Version](#)

[Interactive Discussion](#)

MPF, GBF and HSMPF are comparable in terms of period and arrival time (Fig. 5a–e). These TFs are dextral reverse with SW-NE trending and the hanging block in the SE. They are all located in the SWIM area. They are distinguishable through their dimensions and slip. Other parameters like strike, dip and rake are similar. Among the single fault scenarios the GBF is the biggest single fault producing 17.1 m MWH in the study area (see Table 2). The HSF, although smaller, produces a similar inundation and wave height pattern as the slip is 5 m higher compared to the GBF (see Table 1). The MPF is smaller in terms of dimensions and has a slip of 8 m and therefore produces the weakest tsunami in the SWIM (Table 1 and Fig. 4e). Nevertheless, MWHs are above 10 m and MPF is the nearest fault to the test-site, that produces short tsunami travel time (22 min in Fig. 5e). The composite scenario HSMPF is the worst case scenario and combines the effects of both faults: First wave arrives 22 min after the earthquake and tsunami triggered by HSMPF causes worst inundation and drawback in Sines. The CWF is a subduction slab and has different fault parameters compared to the other TFs in the SWIM. The shallow east dipping slab has dimensions of 170 × 200 km and a slip of 20 m (see Table 1). The analysis of the waveforms shows that wave periods generated by the CWF are larger than the others from the TFs in the SWIM. This fact may be explained by the larger displaced area by this scenario. Cape St. Vincent (Fig. 2) in the southwest of Portugal might act as an obstacle to the tsunami leading to reduce the impact. The CWF has higher impact in the southern part of the study area but with decreasing inundation and amplitudes towards the north. Nevertheless, wave amplitudes of 5 m cause considerable inundation in the northern part of the port. The waves produced by CWF reach Sines 38 min after the earthquake (Table 2). The Gloria fault located at 37° N between 14 and 24° W produces the smallest inundation in the study area. It is a transform fault triggering slight vertical movement because of 160° rake with a slip of 11 m (Table 2). The scenario produces amplitudes between 0.3–0.4 m with approximately 10 min period (Fig. 6b). The earthquake in 1941 generated similar waveforms showing weak attenuation with amplitudes around 0.4 m in Cascais (Baptista et al., 1992; Baptista and Miranda, 2009). Site effects, observed in some few

Scenario based approach for multiple source Tsunami Hazard assessment for Sines, Portugal

M. Wronna et al.

Title Page	
Abstract	Introduction
Conclusions	References
Tables	Figures
⏪	⏩
◀	▶
Back	Close
Full Screen / Esc	
Printer-friendly Version	
Interactive Discussion	

for evacuation and city planners. We showed with the contribution map that different sources play varying importance in our study area. Although the worst case scenario may contribute more to the aggregate scenario than other considered faults, still other faults may have more significant impact on other parts of the test-site. The aggregate scenario is a valuable tool for quantitative presentation of tsunami impact from multiple sources. Especially in areas exposed to threat from near-field sources, the aggregate scenario maps help establishing accurate evacuation plans and thus allowing efficient and faster reaction to tsunami warning.

Acknowledgements. This work is funded by ASTARTE – Assessment, Strategy And Risk Reduction for Tsunamis in Europe – FP7-ENV2013 6.4-3, Grant 603839. The authors wish to thank Commandant José Brazuna Fontes of Sines harbour for his support for the field survey and Direção Geral do Território for making available LIDAR data of the study area. Finally, the authors wish to thank the reviewers for their suggestions that greatly improved the paper.

References

Antunes, C.: Tabelas de Máximos, Médias e Mínimos, available at: http://webpages.fc.ul.pt/~cmantunes/hidrografia/hidro_tabelas.html, last access: 18 November 2014.

Atillah, A., El Hadani, D., Moudni, H., Lesne, O., Renou, C., Mangin, A., and Rouffi, F.: Tsunami vulnerability and damage assessment in the coastal area of Rabat and Salé, Morocco, *Nat. Hazards Earth Syst. Sci.*, 11, 3397–3414, doi:10.5194/nhess-11-3397-2011, 2011.

Baptista, M. A. and Miranda, J. M.: Revision of the Portuguese catalog of tsunamis, *Nat. Hazards Earth Syst. Sci.*, 9, 25–42, doi:10.5194/nhess-9-25-2009, 2009.

Baptista, M. A., Miranda, P., and Victor, L. M.: Maximum entropy analysis of Portuguese tsunami data; the tsunamis of 28.02.1969 and 26.05.1975, *Sci. Tsunami Hazards*, 10, 9–20, 1992.

Baptista, M. A., Miranda, P. M. A., Miranda, J. M., and Victor, L. M.: Constrains on the source of the 1755 Lisbon tsunami inferred from numerical modelling of historical data on the source of the 1755 Lisbon tsunami, *J. Geodyn.*, 25, 159–174, 1998.

Baptista, M. A., Miranda, J. M., Omira, R., and Antunes, C.: Potential inundation of Lisbon downtown by a 1755-like tsunami, *Nat. Hazards Earth Syst. Sci.*, 11, 3319–3326, doi:10.5194/nhess-11-3319-2011, 2011a.



Scenario based approach for multiple source Tsunami Hazard assessment for Sines, Portugal

M. Wronna et al.

[Title Page](#)

[Abstract](#)

[Introduction](#)

[Conclusions](#)

[References](#)

[Tables](#)

[Figures](#)

[⏪](#)

[⏩](#)

[◀](#)

[▶](#)

[Back](#)

[Close](#)

[Full Screen / Esc](#)

[Printer-friendly Version](#)

[Interactive Discussion](#)



- Baptista, M. A., Miranda, J. M., Batllo, J., and Macia, R.: North East Atlantic Tsunamis Related with Gloria Fault, AGU Fall Meeting Abstracts, 1, 1530, 2011b.
- Benckekroun, S., Omira, R., Baptista, M. A., El Mouraouah, A., Brahim, A. I., and Toto, E. A.: Tsunami impact and vulnerability in the harbour area of Tangier, Morocco, Geomatics, Nat. Hazards Risk, doi:10.1080/19475705.2013.858373, in press, 2013.
- Câmara Municipal de Sines: Município de Sines, available at: <http://www.sines.pt/PT/Negocios/potencialidades/turismo/Paginas/default.aspx> (last access: 18 September 2014), 2007.
- Debrach, J.: Raz de marée d'origine sismique eneregistrée sur le litoral Atlantique du Maroc, Service de Physique du Globe et de Meteorologie, Annales, Maroc, 1946.
- Direção-geral do Território: Modelo Digital do Terreno das Zonas Costeiras de Portugal Continental com resolução de 2 m (600 m mar, 400 m terra) – LiDAR, Direção de Serviços de Geodesia e Informação Geográfica, Direção-Geral do Território (DGT), 2011.
- Fukao, Y.: Thrust faulting at a lithospheric plate boundary the Portugal earthquake of 1969, Earth Planet. Sc. Lett., 18, 205–216, 1973.
- GEBCO: The General Bathymetric Chart of the Oceans, GEBCO_2014 Grid, version 20150318, available at: <http://www.gebco.net>, last access: July 2014.
- Gràcia, E., Dañobeitia, J., Vergés, J., and PARSIFAL team: Mapping active faults offshore Portugal (36–38° N): implications for seismic hazard assessment along the southwest Iberian margin, Geology, 31, 83–86, 2003.
- Grimison, N. L. and Chen, W. P.: The Azores–Gibraltar plate boundary: focal mechanisms, depths of earthquakes, and their tectonic implications. J. Geophys. Res.-Sol. Ea., 91, 2029–2047, 1986.
- Gutenberg, B. and Richter, C. F.: Seismicity of the Earth and associated phenomena, Princeton University Press, Princeton, New Jersey, 1949.
- Gutscher, M. A., Malod, J., Rehault, J. P., Contrucci, I., Klingelhoefer, F., Mendes-Victor, L., and Spakman, W.: Evidence for active subduction beneath Gibraltar, Geology, 30, 1071–1074, 2002.
- Instituto Hidrográfico de Portugal: Aproximações a Sines, Plano de Porto de Sines no. 26408, 3rd Edn., Marinha, Instituto Hidrográfico, Lisbon, 2010.
- Instituto Hidrográfico de Portugal: Bathymetric Model of Sines. Modelo Batimetrico de Sines, available at: <http://www.hidrografico.pt/download-gratuito.php> (last access: 4 April 2014), 2012.

Scenario based approach for multiple source Tsunami Hazard assessment for Sines, Portugal

M. Wronna et al.

[Title Page](#)

[Abstract](#)

[Introduction](#)

[Conclusions](#)

[References](#)

[Tables](#)

[Figures](#)

[◀](#)

[▶](#)

[◀](#)

[▶](#)

[Back](#)

[Close](#)

[Full Screen / Esc](#)

[Printer-friendly Version](#)

[Interactive Discussion](#)



Instituto Nacional de Estatística: Census 2011, available at: http://censos.ine.pt/xportal/xmain?xpid=CENSOS&xpgid=censos2011_apresentacao (last access: 18 September 2014), 2011.

Johnston, A. C.: Seismic moment assessment of earthquakes in stable continental regions – III. New Madrid 1811–1812, Charleston 1886 and Lisbon 1755, *Geophys. J. Int.*, 126, 314–344, 1996.

Kaabouben, F., Baptista, M. A., Iben Brahim, A., El Mouraouah, A., and Toto, A.: On the moroccan tsunami catalogue, *Nat. Hazards Earth Syst. Sci.*, 9, 1227–1236, doi:10.5194/nhess-9-1227-2009, 2009.

Laughton, A. S. and Whitmarsh, R. B.: The Azores–Gibraltar plate boundary, in: *Geodynamics of Iceland and the North Atlantic Area*, NATO Advanced Study Institute, Reykjavik, Springer Netherlands, 63–81, 1974.

Lemos, C. R., Omira, R., Pinheiro, L. M., Baptista, M. A., Quaresma, L. S. And Garrido, C.: Tsunami impact from a 1755-like event in the Aveiro Region, Portugal, in: *EGU General Assembly Conference Abstracts*, 16, 15629, 2014.

Lima, V. V., Miranda, J. M., Baptista, M. A., Catalão, J., Gonzalez, M., Otero, L., Olabarrieta, M., Álvarez-Gómez, J. A., and Carreño, E.: Impact of a 1755-like tsunami in Huelva, Spain, *Nat. Hazards Earth Syst. Sci.*, 10, 139–148, doi:10.5194/nhess-10-139-2010, 2010.

Liu, P. L. F., Cho, Y. S., Briggs, M. J., Kanoglu, U., and Synolakis, C. E.: Runup of solitary waves on a circular island, *J. Fluid Mech.*, 302, 259–285, 1995.

Luis, J. F.: Mirone: A multi-purpose tool for exploring grid data, *Comput. Geosci.*, 33, 31–41, 2007.

Luque, L., Lario, J., Zazo, C., Goy, J. L., Dabrio, C. J., and Silva, P. G.: Tsunami deposits as paleoseismic indicators: examples from the Spanish coast, *Acta Geológica Hispánica*, 36, 197–211, 2001.

Lynnes, C. S. and Ruff, L. J.: Source process and tectonic implications of the great 1975 North Atlantic earthquake, *Geophys. J. Int.*, 82, 497–510, 1985.

Martins, I. and Mendes-Victor, L. A.: Contribuição para o estudo da sismicidade de Portugal Continental, Universidade de Lisboa, Instituto Geofísico do Infante D. Luís, Edição 18 de Publicação, 1990.

Mendonça, J. M.: História Universal dos Terramotos que tem havido no mundo desde que ha noticia, desde a sua criação até ao século presente, *Arq Nac da Torre de Tombo*, Lisboa, Portugal, 1758.

Scenario based approach for multiple source Tsunami Hazard assessment for Sines, Portugal

M. Wronna et al.

[Title Page](#)

[Abstract](#)

[Introduction](#)

[Conclusions](#)

[References](#)

[Tables](#)

[Figures](#)

[⏪](#)

[⏩](#)

[◀](#)

[▶](#)

[Back](#)

[Close](#)

[Full Screen / Esc](#)

[Printer-friendly Version](#)

[Interactive Discussion](#)

- Miranda, J. M., Baptista, M. A., Terrinha, P., and Matias, L.: Tsunamigenic source areas for Portugal mainland, Iberia, Oral Communication, Session on Tsunami Early Warning Systems and Tsunami Risk Mitigation in the European-Mediterranean Region, 31st General Assembly of the European Seismological Commission, Crete, Greece, 2008.
- 5 Miranda, J. M., Luis, J. F., Reis, C., Omira, R., and Baptista, M. A.: Validation of NSWING, a multi-core finite difference code for tsunami propagation and run-up, paper number: S21A-4390, session number and title: S21A, American Geophysical Union (AGU) Fall Meeting, San Francisco, 2014.
- Okada, Y.: Surface deformation due to shear and tensile faults in a half-space, *B. Seismol. Soc. Am.*, 75, 1135–1154, 1985.
- 10 Omira, R., Baptista, M. A., Matias, L., Miranda, J. M., Catita, C., Carrilho, F., and Toto, E.: Design of a Sea-level Tsunami Detection Network for the Gulf of Cadiz, *Nat. Hazards Earth Syst. Sci.*, 9, 1327–1338, doi:10.5194/nhess-9-1327-2009, 2009.
- Omira, R., Baptista, M. A., Miranda, J. M., Toto, E., Catita, C., and Catalao, J.: Tsunami vulnerability assessment of Casablanca-Morocco using numerical modelling and GIS tools, *Nat. Hazards*, 54, 75–95, 2010.
- 15 Omira, R., Baptista, M. A., and Miranda, J. M.: Evaluating tsunami impact on the Gulf of Cadiz coast (Northeast Atlantic), *Pure Appl. Geophys.*, 168, 1033–1043, 2011.
- Omira, R., Baptista, M. A., Leone, F., Matias, L., Mellas, S., Zourarah, B., Miranda, J. M., Carrilho, F., and Cherel, J.-P.: Performance of coastal sea-defense infrastructure at El Jaidida (Morocco) against tsunami threat: lessons learned from the Japanese 11 March 2011 tsunami, *Nat. Hazards Earth Syst. Sci.*, 13, 1779–1794, doi:10.5194/nhess-13-1779-2013, 2013.
- 20 Omira, R., Baptista, M. A., and Matias, L.: Probabilistic tsunami hazard in the North East Atlantic from near- and far-field tectonic source, *Pure Appl. Geophys.*, 172, 901–920, 2015.
- Porto de Sines: Administração dos portos de Sines e do Algarve S.A., available at: <http://www.portodesines.pt/>, last access: 18 September 2014.
- Renou, C., Lesne, O., Mangin, A., Rouffi, F., Atillah, A., El Hadani, D., and Moudni, H.: Tsunami hazard assessment in the coastal area of Rabat and Salé, Morocco, *Nat. Hazards Earth Syst. Sci.*, 11, 2181–2191, doi:10.5194/nhess-11-2181-2011, 2011.
- 30 Ribeiro, A., Mendes-Victor, L., Cabral, J. M. L. C., Matias, L., and Terrinha, P.: The 1755 Lisbon earthquake and the beginning of closure of the Atlantic, *European Review*, 14, 193–205, 2006.

- Solares, J. M. and Arroyo, A. L.: The great historical 1755 earthquake. Effects and damage in Spain, *J. Seismol.*, 8, 275–294, 2004.
- Tinti, S., Tonini, R., Bressan, L., Armigliato, A., Gardi, A., Guillande, R., and Scheer, S.: Handbook of tsunami hazard and damage scenarios, JRC Scientific and Technical Reports, EUR 24691 EN, JRC61463, Luxembourg, OP, doi:10.2788/21259, 2011.
- Zitellini, N., Chierici, F., Sartori, R., and Torelli, L.: The tectonic source of the 1755 Lisbon earthquake and tsunami, *Ann. Geofis.*, 42, 49–55, 1999.
- Zitellini, N., Mendes, L. A., Cordoba, D., Danobeitia, J., Nicolich, R., Pellis, G., and Ruiz, A. Z.: Source of 1755 Lisbon earthquake and tsunami investigated, *EOS T. Am. Geophys. Un.*, 82, 285–291, 2001.
- Zitellini, N., Gràcia, E., Matias, L., Terrinha, P., Abreu, M. A., DeAlteriis, G., and Diez, S.: The quest for the Africa–Eurasia plate boundary west of the Strait of Gibraltar, *Earth Planet. Sc. Lett.*, 280, 13–50, 2009.

Scenario based approach for multiple source Tsunami Hazard assessment for Sines, Portugal

M. Wronna et al.

[Title Page](#)[Abstract](#)[Introduction](#)[Conclusions](#)[References](#)[Tables](#)[Figures](#)[⏪](#)[⏩](#)[◀](#)[▶](#)[Back](#)[Close](#)[Full Screen / Esc](#)[Printer-friendly Version](#)[Interactive Discussion](#)

Scenario based approach for multiple source Tsunami Hazard assessment for Sines, Portugal

M. Wronna et al.

Table 1. Fault parameters of the tsunamigenic sources considered in this study.

Fault	L [km]	W [km]	Rake [°]	Strike [°]	Dip [°]	Slip [m]	Depth [km]	μ [Pa]	Mw
HSF	165	70	90	42.1	35	15	5	4.5×10^{10}	8.5
MPF	110	70	90	20.1	35	8	5	4.5×10^{10}	8.25
CWF	170	200	90	349	5	20	5	3.0×10^{10}	8.75
GBF	200	80	90	53	35	10	5	4.5×10^{10}	8.5
HSMPF	165/110	70/70	90/90	42.1/ 20.1	35/35	15/8	5/5	4.5×10^{10} / 4.5×10^{10}	8.75
Gloria	200	50	160	82	88	11	1	3.0×10^{10}	8.3

[Title Page](#)

[Abstract](#)

[Introduction](#)

[Conclusions](#)

[References](#)

[Tables](#)

[Figures](#)

[|◀](#)

[▶|](#)

[◀](#)

[▶](#)

[Back](#)

[Close](#)

[Full Screen / Esc](#)

[Printer-friendly Version](#)

[Interactive Discussion](#)

Scenario based approach for multiple source Tsunami Hazard assessment for Sines, Portugal

M. Wronna et al.

Table 2. Synthesis of the Results: MFD, MWH, inundated area, MDB, MRU and arrival time for all scenarios at MSL.

Scenario (MSL)	MFD [m]	MWH [m]	Inundated area [km ²]	MDB [km ²]	MRU [m]	Arrival time [min]
CWF	12.2	12.8	2.71	2.98	14.1	38
HSF	13.3	15.7	3.16	3.37	19.3	30
GBF	12.4	17.1	3.18	3.02	18.9	25
HSMPF	13.1	18.6	3.47	3.80	17.5	22
MPF	9.1	10.7	2.07	1.98	11.3	22
Gloria	0.9	1.2	0.19	0.22	4.3	85

[Title Page](#)

[Abstract](#)

[Introduction](#)

[Conclusions](#)

[References](#)

[Tables](#)

[Figures](#)

[⏪](#)

[⏩](#)

[◀](#)

[▶](#)

[Back](#)

[Close](#)

[Full Screen / Esc](#)

[Printer-friendly Version](#)

[Interactive Discussion](#)

Scenario based approach for multiple source Tsunami Hazard assessment for Sines, Portugal

M. Wronna et al.

[Title Page](#)

[Abstract](#)

[Introduction](#)

[Conclusions](#)

[References](#)

[Tables](#)

[Figures](#)

[|◀](#)

[▶|](#)

[◀](#)

[▶](#)

[Back](#)

[Close](#)

[Full Screen / Esc](#)

[Printer-friendly Version](#)

[Interactive Discussion](#)

Table 3. Contribution of the scenarios to the aggregate model considering 3 stages of the tide.

Scenario	CWF [%]	GBF [%]	HSF [%]	HSMPF [%]
AGG MHHW	8.3	15.8	9.9	66
AGG MSL	15.1	12.4	10.0	62.5
AGG MLLW	16.8	11.7	11.1	60.3

Scenario based approach for multiple source Tsunami Hazard assessment for Sines, Portugal

M. Wronna et al.

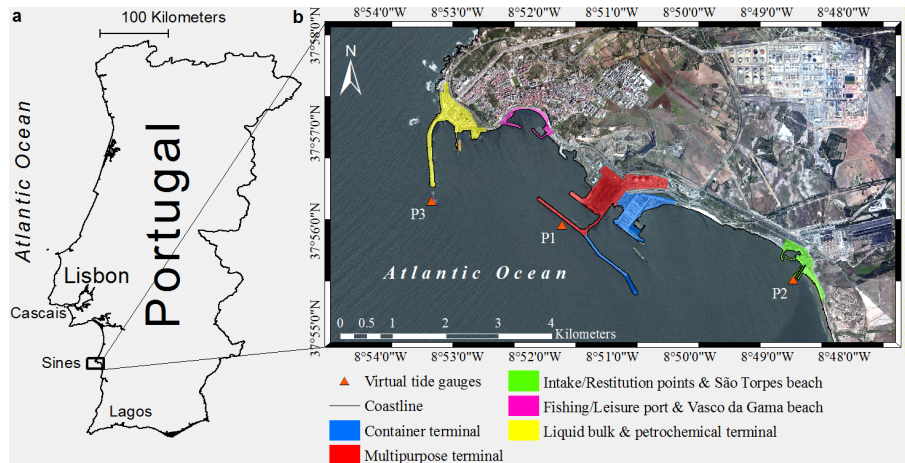


Figure 1. (a) General map: Location of Sines test site; (b) test site map identifying general features and tide gauges for synthetic wave forms.

[Title Page](#)
[Abstract](#)
[Introduction](#)
[Conclusions](#)
[References](#)
[Tables](#)
[Figures](#)
[⏪](#)
[⏩](#)
[◀](#)
[▶](#)
[Back](#)
[Close](#)
[Full Screen / Esc](#)
[Printer-friendly Version](#)
[Interactive Discussion](#)

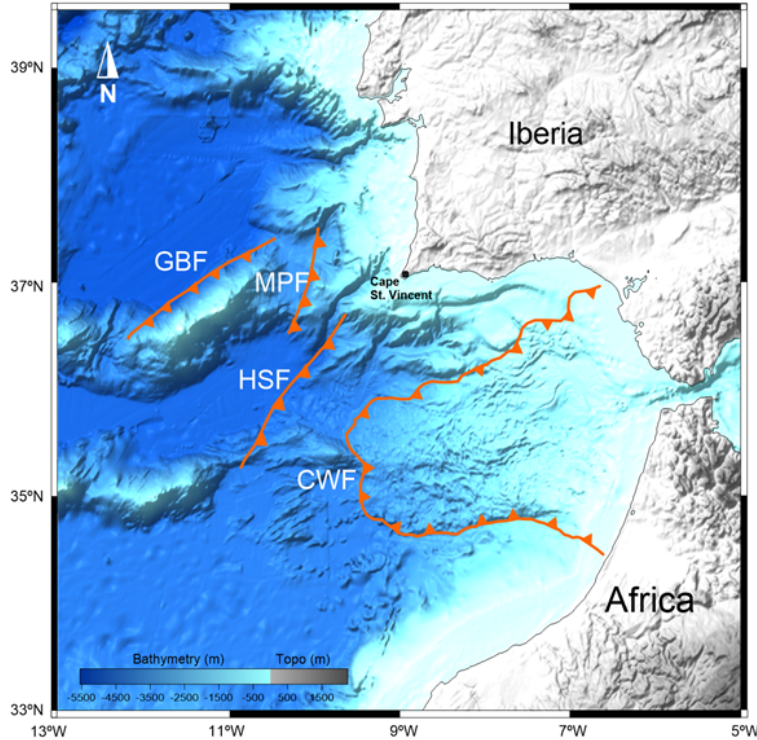


Figure 2. TFs used for Tsunami modeling in the SWIM. Dextral reverse faults: Goringe Bank fault (GBF), Marques Pombal fault (MPF), Horseshoe fault (HSF); Subduction slab: Cadiz Wedge Fault (CWF).

Scenario based approach for multiple source Tsunami Hazard assessment for Sines, Portugal

M. Wronna et al.

Title Page

Abstract

Introduction

Conclusions

References

Tables

Figures

⏪

⏩

◀

▶

Back

Close

Full Screen / Esc

Printer-friendly Version

Interactive Discussion



Discussion Paper | Discussion Paper | Discussion Paper | Discussion Paper | Discussion Paper

Scenario based
approach for multiple
source Tsunami
Hazard assessment
for Sines, Portugal

M. Wronna et al.

Title Page

Abstract

Introduction

Conclusions

References

Tables

Figures

⏪

⏩

◀

▶

Back

Close

Full Screen / Esc

Printer-friendly Version

Interactive Discussion

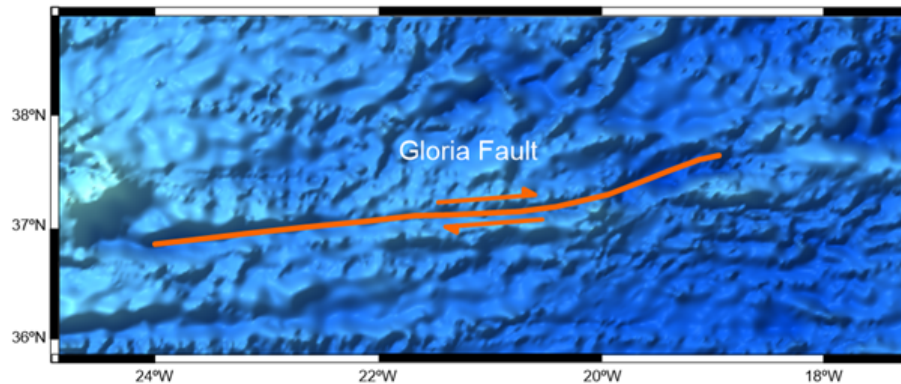


Figure 3. Dimension and geographic location of the Gloria fault (red line) considered in this study.

Scenario based approach for multiple source Tsunami Hazard assessment for Sines, Portugal

M. Wronna et al.

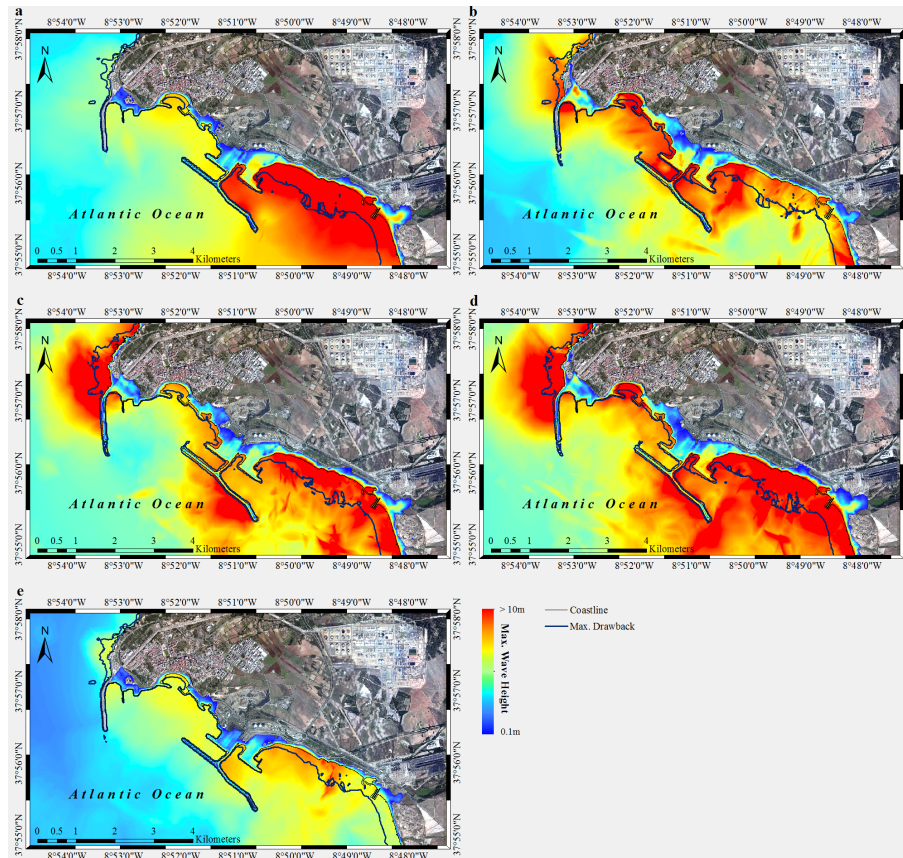


Figure 4. Results of MWH, MFD, MDB and MRU of the SWIM scenarios considering MSL: (a) CWF, (b) GBF, (c) HSF, (d) HSMPPF, (e) MPF.

[Title Page](#)

[Abstract](#)

[Introduction](#)

[Conclusions](#)

[References](#)

[Tables](#)

[Figures](#)

[◀](#)

[▶](#)

[◀](#)

[▶](#)

[Back](#)

[Close](#)

[Full Screen / Esc](#)

[Printer-friendly Version](#)

[Interactive Discussion](#)

Scenario based approach for multiple source Tsunami Hazard assessment for Sines, Portugal

M. Wronna et al.

[Title Page](#)

[Abstract](#)

[Introduction](#)

[Conclusions](#)

[References](#)

[Tables](#)

[Figures](#)

[⏪](#)

[⏩](#)

[◀](#)

[▶](#)

[Back](#)

[Close](#)

[Full Screen / Esc](#)

[Printer-friendly Version](#)

[Interactive Discussion](#)

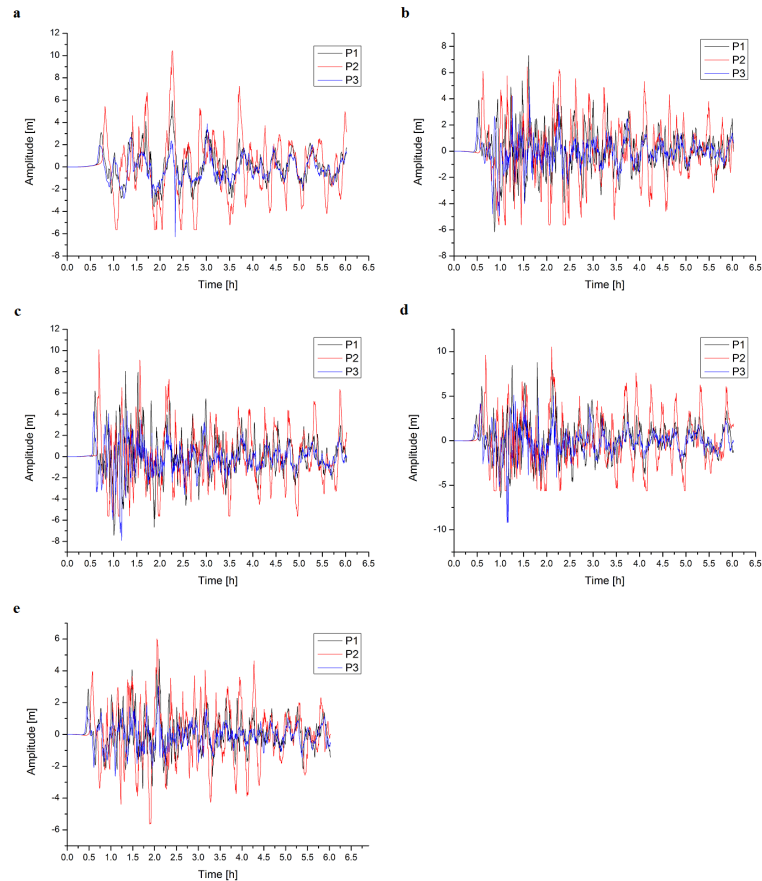


Figure 5. Synthetic waveforms for 6 h propagation time at 3 chosen points (cf. Fig. 1) for the SWIM scenarios: **(a)** CWF, **(b)** GBF, **(c)** HSF, **(d)** HSMPF, **(e)** MPF.

Scenario based approach for multiple source Tsunami Hazard assessment for Sines, Portugal

M. Wronna et al.

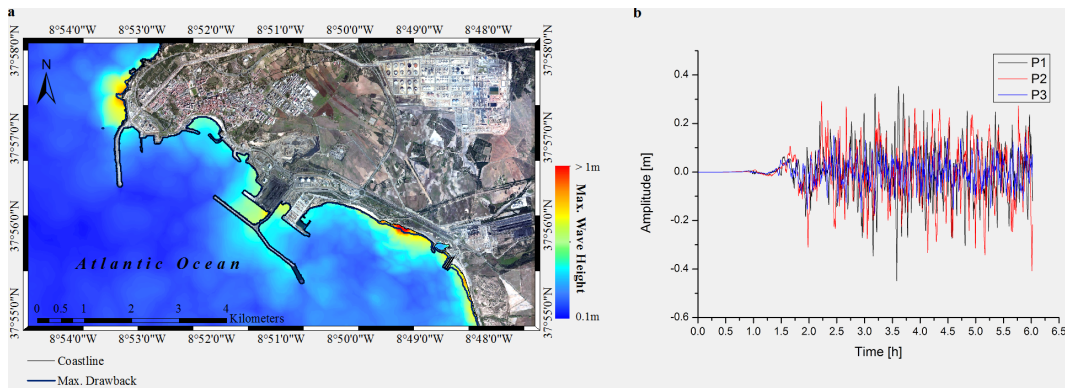


Figure 6. (a) Results MWH, MFD, MDB and MRU for the Gloria scenario, (b) synthetic wave-form for 6 h propagation time at 3 chosen points (cf. Fig. 1) for the Gloria scenario.

Scenario based approach for multiple source Tsunami Hazard assessment for Sines, Portugal

M. Wronna et al.

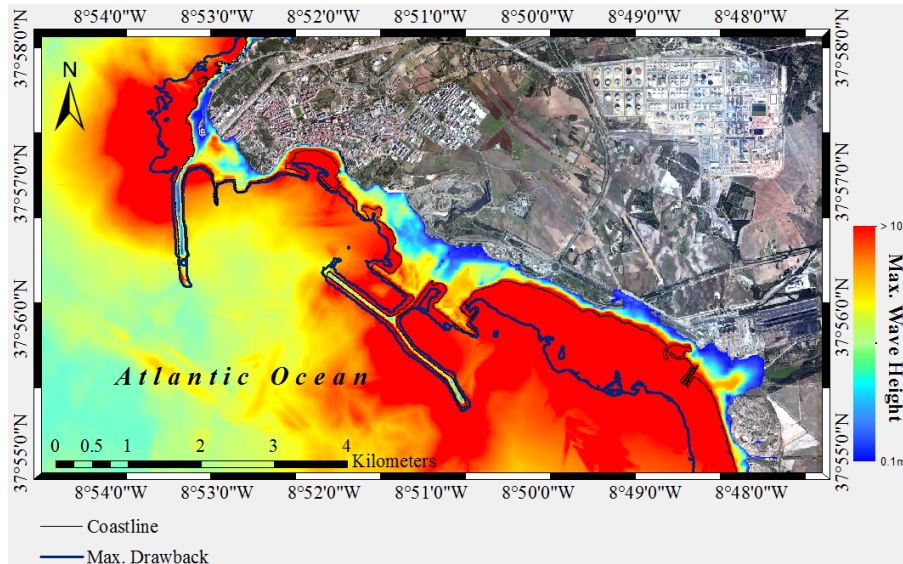


Figure 7. MWH, MFD, MDB and MRU for the aggregate scenario considering all stages of the tide.

[Title Page](#)

[Abstract](#)

[Introduction](#)

[Conclusions](#)

[References](#)

[Tables](#)

[Figures](#)

[⏪](#)

[⏩](#)

[◀](#)

[▶](#)

[Back](#)

[Close](#)

[Full Screen / Esc](#)

[Printer-friendly Version](#)

[Interactive Discussion](#)



Scenario based approach for multiple source Tsunami Hazard assessment for Sines, Portugal

M. Wronna et al.

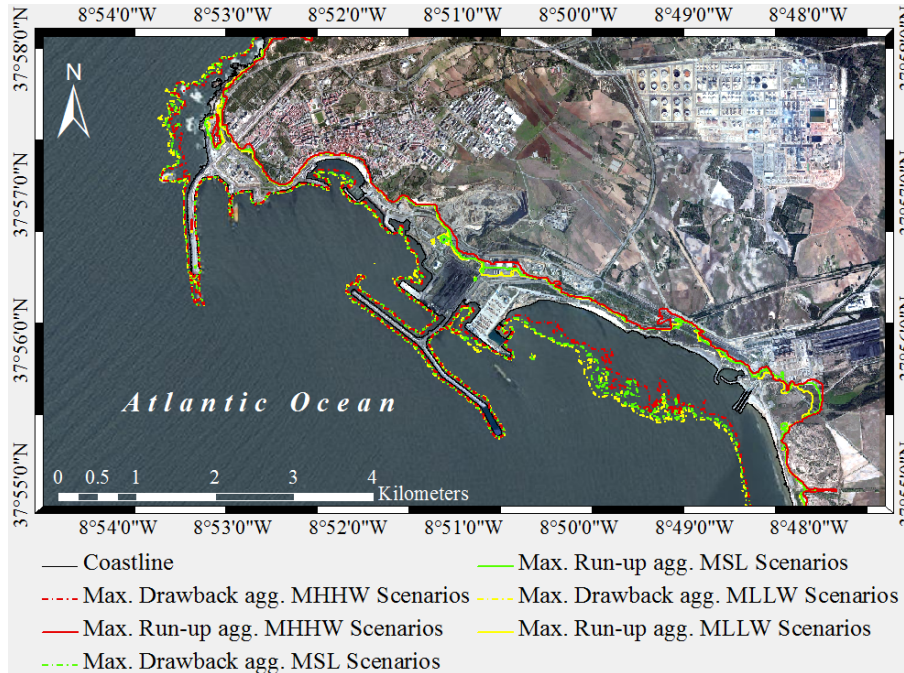


Figure 8. MDB and MRU limits for the stages MLLW, MSL and MHHW of the tide.

[Title Page](#)

[Abstract](#)

[Introduction](#)

[Conclusions](#)

[References](#)

[Tables](#)

[Figures](#)

[⏪](#)

[⏩](#)

[◀](#)

[▶](#)

[Back](#)

[Close](#)

[Full Screen / Esc](#)

[Printer-friendly Version](#)

[Interactive Discussion](#)

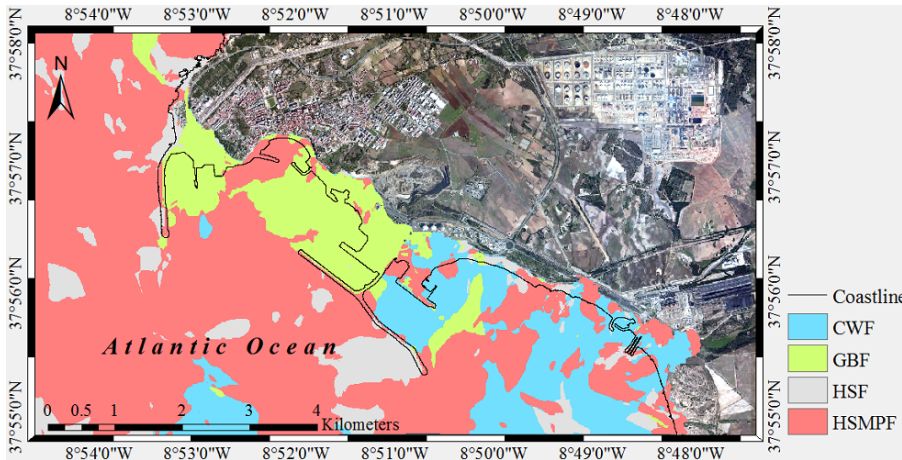


Figure 9. Contribution of individual scenarios to the aggregate model at MSL.

Scenario based approach for multiple source Tsunami Hazard assessment for Sines, Portugal

M. Wronna et al.

[Title Page](#)

[Abstract](#)

[Introduction](#)

[Conclusions](#)

[References](#)

[Tables](#)

[Figures](#)

[⏪](#)

[⏩](#)

[◀](#)

[▶](#)

[Back](#)

[Close](#)

[Full Screen / Esc](#)

[Printer-friendly Version](#)

[Interactive Discussion](#)

