



A dynamic landslide hazard assessment system for Central America and Hispaniola

D. B. Kirschbaum et al.

A dynamic landslide hazard assessment system for Central America and Hispaniola

D. B. Kirschbaum¹, T. Stanley^{1,2}, and J. Simmons³

¹Hydrological Sciences Laboratory, Goddard Space Flight Center, Greenbelt, Maryland, USA

²Universities Space Research Association, Columbia, Maryland, USA

³Columbia University, New York, USA

Received: 12 March 2015 – Accepted: 26 March 2015 – Published: 29 April 2015

Correspondence to: D. B. Kirschbaum (dalia.b.kirschbaum@nasa.gov)

Published by Copernicus Publications on behalf of the European Geosciences Union.

Title Page

Abstract

Introduction

Conclusions

References

Tables

Figures



Back

Close

Full Screen / Esc

Printer-friendly Version

Interactive Discussion



Abstract

Landslides pose a serious threat to life and property in Central America and the Caribbean Islands. In order to allow regionally coordinated situational awareness and disaster response, an online decision support system was created. At its core is a new flexible framework for evaluating potential landslide activity in near real-time: Landslide Hazard Assessment for Situational Awareness. This framework was implemented in Central America and the Caribbean by integrating a regional susceptibility map and satellite-based rainfall estimates into a binary decision tree, considering both daily and antecedent rainfall. Using a regionally distributed, percentile-based threshold approach, the model outputs a pixel-by-pixel nowcast in near real-time at a resolution of 30 arcsec to identify areas of moderate and high landslide hazard. The daily and antecedent rainfall thresholds in the model are calibrated using a subset of the Global Landslide Catalog in Central America available for 2007–2013. The model was then evaluated with data for 2014. Results suggest reasonable model skill over Central America and poorer performance over Hispaniola, due primarily to the limited availability of calibration and validation data. The landslide model framework presented here demonstrates the capability to utilize globally available satellite products for regional landslide hazard assessment. It also provides a flexible framework to interchange the individual model components and adjust or calibrate thresholds based on access to new data and calibration sources. The availability of free, satellite-based near real-time rainfall data allows the creation of similar models for any study area with a spatiotemporal record of landslide events. This method may also incorporate other hydrological or atmospheric variables such as numerical weather forecasts or satellite-based soil moisture estimates within this decision tree approach for improved hazard analysis.

A dynamic landslide hazard assessment system for Central America and Hispaniola

D. B. Kirschbaum et al.

Title Page

Abstract

Introduction

Conclusions

References

Tables

Figures



Back

Close

Full Screen / Esc

Printer-friendly Version

Interactive Discussion



1 Introduction

The ability to estimate or forecast landslide hazard activity is largely dependent on the scale at which the analysis is undertaken as well as the availability of geomorphologic, atmospheric, and landslide data accessible for the study region. Physically based models focusing on the local hillslope scale require a broad range of geotechnical and hydromechanical in situ variables for accurate modelling of individual slope failures (Baum et al., 2010; Montgomery and Dietrich, 1994). Empirical studies can focus on local to regional scales but are constrained by the availability of landslide information and surface products that can be used to create a homogenous picture of landslide hazard over the region. The timing of rainfall-triggered landslides is challenging to predict due to the scarcity of real-time precipitation measurements, in situ landslide inventories and information about local ground conditions. Satellite rainfall products provide the opportunity to approximate the conditions that lead to rainfall-triggered landslides over regional scales, especially where rain gauge networks are sparse. The Tropical Rainfall Measuring Mission (TRMM) and its successor, the Global Precipitation Measurement (GPM) mission, provide a multi-decadal record of precipitation estimates that can be used to systematically evaluate rainfall and estimate landslide triggering relationships over multiple spatial and temporal scales (Kirschbaum et al., 2012a; Ray and Jacobs, 2007; Rossi et al., 2012).

Previous work has used rainfall intensity–duration (I–D) thresholds to estimate the landslide hazard over time at a variety of spatial scales (Caine, 1980; Godt et al., 2006; Guzzetti et al., 2008; Terlien, 1998). Landslide susceptibility zonation studies have examined the components of landslide hazard using a range of heuristic (Hong et al., 2007; Mora and Vahrson, 1994; Nadim et al., 2006) and statistical (Eeckhaut et al., 2009; Lee and Pradhan, 2007; Pradhan and Lee, 2010) models at diverse spatial scales. Kirschbaum et al. (2012b) adapted a prototype global system developed by Hong et al. (2006) into a dynamic landslide model at the regional scale that applied a single I–D threshold to TRMM Multi-satellite Precipitation Analysis (TMPA; Huffman

NHESSD

3, 2847–2882, 2015

A dynamic landslide hazard assessment system for Central America and Hispaniola

D. B. Kirschbaum et al.

Title Page

Abstract

Introduction

Conclusions

References

Tables

Figures



Back

Close

Full Screen / Esc

Printer-friendly Version

Interactive Discussion

A dynamic landslide hazard assessment system for Central America and Hispaniola

D. B. Kirschbaum et al.

Title Page	
Abstract	Introduction
Conclusions	References
Tables	Figures
◀	▶
◀	▶
Back	Close
Full Screen / Esc	
Printer-friendly Version	
Interactive Discussion	

et al., 2007, 2010) precipitation data and a susceptibility map for four countries in Central America: Honduras, Nicaragua, El Salvador and Guatemala. The Landslide Hazard Assessment for Situational Awareness (LHASA) model presented here builds upon the previous work to develop a dynamic regional framework that provides estimations of regional landslide hazard in near real-time. The model incorporates a new landslide susceptibility map developed for Central America and the Caribbean region (Kirschbaum et al., 2015a) with local percentile-based rainfall and antecedent rainfall thresholds. LHASA has been incorporated into a prototype regional natural hazard website: <http://ojo-streamer.herokuapp.com/meso>. The public is now able to view a daily map identifying moderate and high landslide hazard areas, static landslide susceptibility, precipitation and antecedent rainfall over the study domain and download the model's major data inputs.

This study addresses the challenge of providing a near real-time estimation of potential landslide activity using sparse in situ information. Ideally, an empirical relationship between precipitation and landslide occurrence would be based on a long historical landslide record with many events and corresponding gauge-based rainfall at the local scale (Frattini et al., 2009; Guzzetti et al., 2007). However, due to the dearth of both landslide information and rainfall gauges over this region, extracting local I–D thresholds was not possible. The approach presented here leverages the long-term TMPA precipitation record to relate landslide events from the Global Landslide Catalog (GLC) to a statistical distribution of rainfall from 2000–2013. While intense rainstorms are the most important trigger of landslides in the Caribbean region (Larsen and Simon, 1993), landslides are often exacerbated by prior soil moisture conditions (Nadim et al., 2009). Using antecedent daily rainfall has been shown to help predict landslides, especially those cases where the triggering precipitation event is small (Cepeda et al., 2010b). The LHASA model incorporates an antecedent rainfall index (ARI) to represent the conditions prior to the day of the triggering event. Since the relationship between rainfall, antecedent rainfall, susceptibility and landslide triggering is not linear, we employ a binary decision tree approach to test the feasibility of the model to accurately re-



solve landslide nowcasts while minimizing the overall number of alerts issued. This paper first presents an overview of the regional application of the model and data used for this study. Next the LHASA threshold-based decision tree model framework is presented and calibration and validation procedures for parameterizing the model over Central American and the Caribbean are outlined. Lastly, the paper concludes with a discussion outlining the applicability of this model framework across a range of spatiotemporal scales and the possibility of using different hydrometeorological and in situ data products.

2 Data

2.1 Regional setting

The LHASA model provides a flexible architecture that can be applied over a variety of spatiotemporal scales leveraging regional environmental, climatic and landslide data. The model was initially developed to serve two regions: Central America and Hispaniola. The Central America study area ranges from 93 to 76° west longitude and from 6 to 19° north latitude. In addition to the nations of Central America, the analysis includes Jamaica and small portions of Mexico and Colombia. Central America has a tropical climate and a wide range of terrain dominated by the Central American Volcanic Arc along the western coast and active geologic faults throughout the region. The region experiences intermittent spring rains and a long rainy season from July through November, marked by landfalling tropical cyclones from the Caribbean Sea and eastern Pacific Ocean. These heavy rains combine with tectonic activity to make Central America a hotspot for landslide activity (Nadim et al., 2006). The Hispaniola study area encompasses Haiti, the Dominican Republic and Puerto Rico. The timing and intensity of the rainy season varies across Hispaniola due to five major mountain ranges across the island, with elevations varying from 3000 m to below sea level. Due to the associated rain shadow, annual precipitation varies from over 2500 mm in the elevated northern

A dynamic landslide hazard assessment system for Central America and Hispaniola

D. B. Kirschbaum et al.

Title Page

Abstract

Introduction

Conclusions

References

Tables

Figures

◀

▶

◀

▶

Back

Close

Full Screen / Esc

Printer-friendly Version

Interactive Discussion



(Verdin et al., 2007). The 70th quantile slope gradient was considered for this evaluation because the slope distribution most closely correlated to the 3 arcsec SRTM data for reported landslide locations. The distribution of major soil types was obtained in raster format from the Harmonized World Soil Database (FAO/IIASA/ISRIC/ISSCAS/JRC, 2012). The variable “percent clay” was selected to represent the regional soil properties. Road locations were obtained from the Global Roads Open Access Data Set, Version 1 (CIESIN and ITOS, 2013). These 4 layers were overlaid in ArcGIS through the use of fuzzy operators. Using the SD classification scheme, the susceptibility map was divided into 5 categories that represented relative hazard: very low, low, medium, high, and very high. Four historical landslide catalogs – varying greatly in temporal, spatial scale, size, and completeness – were used to evaluate the susceptibility map. Figure 2 compares the distribution of the 5 susceptibility categories at recorded landslides to the distribution over the total study area. Few landslides occurred in locations rated as having “very low” landslide susceptibility (SI = 1), despite the fact that this is the largest category by area. These locations were not considered susceptible to landslides for the purposes of the binary decision tree model.

2.4 Rainfall estimates

Satellite precipitation estimates from the Tropical Rainfall Measuring Mission (TRMM) Real-Time Multi-Satellite Precipitation Analysis (TMPA-RT) are available at a resolution of $0.25^\circ \times 0.25^\circ$ (Huffman et al., 2007, 2010). This product provides a snapshot of precipitation rates utilizing TRMM and other satellites to provide a precipitation map every 3 h from 50° N–S. TMPA-RT data is available from March 2000 to the present. For this analysis, the 3 hourly files were merged to compute daily rainfall totals for this region. The Global Precipitation Measurement (GPM) mission was launched in February 2014 and is a global successor to TRMM. GPM’s multi-satellite product called IMERG (Integrated Multi-Satellite Retrievals for GPM) is already providing data, although TMPA-RT will continue to be processed into the near future.

A dynamic landslide hazard assessment system for Central America and Hispaniola

D. B. Kirschbaum et al.

Title Page

Abstract

Introduction

Conclusions

References

Tables

Figures

◀

▶

◀

▶

Back

Close

Full Screen / Esc

Printer-friendly Version

Interactive Discussion



3 Methods

The model inputs to LHASA required several processing and calibration steps before they could be directly applied. Unless otherwise noted, all calculations were performed in the statistical programming language, R v3.1.2 (R Core Team, 2013). Raster operations were performed with the “raster”, a third-party package for R (Hijmans and van Etten, 2014). All raster files were resampled to a resolution of 30 arcsec, the same as the susceptibility map, using the nearest neighbour method, and clipped to the two study areas. Thus, each pixel represents a data point of approximately 1 km² (30 arcsec) and the model is run every 24 h. Where possible, the dates of landslides were adjusted to match the time zone of the daily rainfall data. The landslide catalog was converted from a shapefile to a series of daily presence/absence landslide rasters over the same extent as the rainfall files. This format enabled landslide events to be directly compared to the daily maps of landslide hazard outputs of the LHASA model. Most raster operations were performed in parallel on a Linux server.

3.1 Landslide catalog

The landslide catalogs used to calibrate this model are known to contain both spatial and temporal errors (Kirschbaum et al., 2015b). The spatial accuracy of each landslide point was estimated at the time of recording. Although the least accurate reports were not used in this study, some landslides may have occurred as much as 25 km from their reported locations. In these cases, as well as with more accurate reports, the terrain and rainfall where the landslide occurred may differ from the conditions at the reported coordinates. In addition, the exact date and time of an event is often unknown. To evaluate the extent to which landslide reports were incorrectly evaluated as false negatives due to spatiotemporal uncertainty, landslide points were spatially and temporally buffered. Temporal uncertainties were accounted for by considering 1, 3 and 7 day windows surrounding the reported landslide date. Spatial uncertainties were evaluated by considering the exact location of the reported landslide, 1 and 5 km cir-

A dynamic landslide hazard assessment system for Central America and Hispaniola

D. B. Kirschbaum et al.

Title Page

Abstract

Introduction

Conclusions

References

Tables

Figures



Back

Close

Full Screen / Esc

Printer-friendly Version

Interactive Discussion



cular buffers surrounding the location as well as a variable buffer based on the spatial accuracy denoted in each landslide entry. For this analysis, if a nowcast was generated anywhere within the buffer spatiotemporal window, we considered this nowcast to be a success (true positive). There are challenges inherent with this assumption, which are outlined in the Discussion section. True Positive Rates were calculated for each combination of windows.

3.2 Daily rainfall

Owing to the diverse topography, coastal zones and prevailing wind patterns, rainfall is unevenly distributed over the Central America and Hispaniola study regions. There have been many different approaches to representing the intensity-duration rainfall triggering relationships at various scales including critical rainfall (Aleotti, 2004), normalized rainfall using mean annual precipitation (Terlien, 1998), return period (Hromadka II et al., 2010) and the combination of multiple thresholds (Cepeda et al., 2010b; Chleborad et al., 2006), among others. Many of these approaches are summarized in Guzzetti et al. (2008). One of the challenges with approaching rainfall-triggering relationships at a regional scale is that the prevailing precipitation regimes are regionally heterogeneous. As a result, developing a single regional intensity-duration threshold to represent the landslide triggering relationships across this region was not optimal.

To address this problem we considered the statistical distribution of daily rainfall over a 13 year record, using percentiles to create a precipitation metric that could be compared across morphologies and landslides events. A daily precipitation time series from 1 January 2001 to 31 December 2013 was prepared for each pixel over the study region and days with no rainfall were removed from the calculations. Then, every 5th percentile was calculated from the distribution of non-zero values using the “quantile” function’s default method. The resulting series of raster files identify the local precipitation distribution at each pixel and provide a more localized way to address regional landslide triggering (Fig. 3). The rainfall thresholds were then calibrated with the land-

A dynamic landslide hazard assessment system for Central America and Hispaniola

D. B. Kirschbaum et al.

Title Page

Abstract

Introduction

Conclusions

References

Tables

Figures

◀

▶

◀

▶

Back

Close

Full Screen / Esc

Printer-friendly Version

Interactive Discussion

slide data to assign a separate rainfall threshold for each 0.25° pixel. The calibration procedure is described below.

3.3 Antecedent rainfall

Real-time measurements of subsurface pore pressure are not available at most locations within the study area. Satellite-based soil moisture retrievals are often biased or limited over complex terrain, particularly with dense vegetation (Jackson and Schmugge, 1991; Njoku et al., 2003). Therefore, remotely sensed rainfall was chosen as a proxy for this variable. Time is required for rain to infiltrate soil and rock and generate higher pore pressures that lead to slope instabilities, as well as for pore pressure to dissipate. High levels of precipitation often trigger landslides, but the amount required to do so is usually dependent upon the volume of prior rain and the permeability of the soils and rocks. To describe this phenomenon, an antecedent rainfall index (ARI) was created from the TMPA-RT daily rainfall estimates using a time-weighted average of the previous 60 days:

$$\frac{\sum_{t=1}^{60} W_t \times p_t}{\sum_{t=1}^{60} W_t} \quad (1)$$

where t = the number of days before the present, p_t = the precipitation at time t , and $W_t = t^{-0.5}$. This closely resembles the antecedent precipitation index introduced by Kohler and Linsley (1951). The decay exponent and the 60 day window were chosen by calibrating a preliminary decision tree model using landslide reports and 500 randomly selected locations.

No rainfall or ARI threshold can serve as a perfect classifier to differentiate landslide and non-landslide rainfall events because the distributions of these two datasets overlap (Fig. 4). However, Fig. 5 shows that the relative frequency of landslides increases at higher precipitation levels, allowing thresholds for current and antecedent rainfall to be combined in such a way that the resulting classification is reasonably effective.

A dynamic landslide hazard assessment system for Central America and Hispaniola

D. B. Kirschbaum et al.

Title Page

Abstract

Introduction

Conclusions

References

Tables

Figures

◀

▶

◀

▶

Back

Close

Full Screen / Esc

Printer-friendly Version

Interactive Discussion



3.4 Decision tree framework

At the most simplistic level, higher soil moisture values prior to a landslide occurrence can be a key predisposing factor in future landslide triggering (Wieczorek, 1987). Past decision tree models considering precipitation and antecedent values have been derived at mostly the city level and apply the trade-off between rainfall and past rainfall infiltration to create an alert framework (Aleotti, 2004; Godt et al., 2006). In this study, antecedent rainfall was incorporated into a 3-level binary decision tree structure (Fig. 6). At the first level, those pixels believed to have “very low” susceptibility to landslides (susceptibility index of 1 or 0) are excluded from further analysis. All other pixels are considered as having a non-negligible chance of slope failure. At the second level of analysis, the antecedent rainfall value for each pixel is compared to the 50th percentile value. This antecedent rainfall threshold roughly corresponds to the division between the Central American wet season, during which most landslides occur, and the dry season (Fig. 7b). At the third level of the decision tree, the current daily rainfall accumulation is compared to the daily rainfall threshold and moderate or high landslide hazard nowcast is issued. If the 50th percentile rainfall is exceeded and the soils are considered to be wet ($ARI > 50$ th percentile), a moderate hazard level is assigned. If the rainfall exceeds the 95th percentile, a high hazard is assigned. In dry conditions ($ARI < 50$ th percentile), a moderate hazard level is assigned if the daily rainfall exceeds the 90th percentile and a high hazard nowcast is generated if rainfall exceeds the 95th percentile.

The moderate hazard nowcast thresholds were determined by comparing the ARI and daily rainfall thresholds for the 123 events from the Central American catalog and optimizing the predominant thresholds for these instances. The calibration process did not include every possible set of thresholds due to the compute time, but provided a representative sample of the percentiles for both ARI and daily rainfall records. The model was not calibrated for the 24 landslides that occurred in Hispaniola because preliminary analysis of the reported landslide locations indicated that no combination

NHESSD

3, 2847–2882, 2015

A dynamic landslide hazard assessment system for Central America and Hispaniola

D. B. Kirschbaum et al.

Title Page

Abstract

Introduction

Conclusions

References

Tables

Figures

◀

▶

◀

▶

Back

Close

Full Screen / Esc

Printer-friendly Version

Interactive Discussion

of rainfall thresholds would provide a good fit to the landslide observations. The high landslide hazard classification was determined based on the desire to provide a representation of extreme rainfall at any time over the study region. The 95th percentile was chosen based on past research and qualitative analysis of the rainfall distributions over this area (Kirschbaum et al., 2015b). Further discussion of this topic can be found in the Results section.

3.5 Evaluation

The predictive success of the dynamic landslide model was evaluated with the “distance to perfect classification” metric, r_j (Cepeda et al., 2010a), which combines the true positive rate (TPR) with the false positive rate (FPR):

$$r_j = \sqrt{(\text{FPR}^2 + (1 - \text{TPR})^2)} \quad (2)$$

where $\text{TPR} = \text{true positives} / (\text{true positives} + \text{false negatives})$ and $\text{FPR} = \text{false positives} / (\text{false positives} + \text{true negatives})$. These metrics are often used to compare binary classifiers (Fawcett, 2006). In this case, the true positives are pixels where a landslide occurred on the same date that the model issued a nowcast, the false negatives are pixels where a landslide occurred on the same date that the model failed to identify the potential for slope failure, the false positives are pixels where a landslide did not occur on the same date that the model identified the potential for slope failure, and the true negatives are pixels where the model did not identify the potential for slope failure and no landslide was reported. The confusion matrix was calculated for each day in the study period and then results were summed before calculating the FPR and TPR. This process was repeated each time the model ran during calibration. For the 2007–2013 dataset, the TPR varied more rapidly with threshold changes than the FPR, so changes in r_j largely reflected changes in the model’s ability to predict the occurrence of a relatively small number of landslides. The predictions were also evaluated across

A dynamic landslide hazard assessment system for Central America and Hispaniola

D. B. Kirschbaum et al.

Title Page

Abstract

Introduction

Conclusions

References

Tables

Figures

◀

▶

◀

▶

Back

Close

Full Screen / Esc

Printer-friendly Version

Interactive Discussion

a variety of modest spatial and temporal windows. After calibration, the same metrics were calculated for an independent 2014 dataset.

4 Results

The LHASA model was evaluated over Central America and Hispaniola for 2007–2013 and then compared with an independent validation dataset for 2014. The best performance, an r_j of 0.38, was observed with an antecedent rainfall threshold of the 50th percentile and current daily rainfall thresholds of the 50th and 90th percentiles. The high hazard threshold (95th percentile) was not calibrated with the available landslide data. The model results are summarized in Table 2. The TPR varied depending on the spatiotemporal window considered for identifying the landslide. As introduced above, we accounted for the uncertainty in the reported date and location of the landslide by applying spatial and temporal buffers around the reported latitude and longitude and date of the event. We considered TPR results for 1, 3, and 7 day windows surrounding the date of the landslide and 0, 1 and 5 km buffers as well as another buffer field that directly applies the qualitative location accuracy value reported for the event (ranging from a 0 to 25 km radius surrounding the landslide location). For each of these buffered windows, if a nowcast were issued anywhere within the area considered, we considered it to be a successful prediction. The same approach was taken for both moderate and high hazard categories.

4.1 Central America (2007–2013)

Results for all regions and time spans considered indicate that generally as the buffer temporal and spatial window increase, the TPR increases as well. This result is not surprising as it provides more opportunities for a nowcast to be successful. The temporal window (or spatial buffer) has more variability in the TPR values at the most conservative tolerances assigned, ranging from 64 to 83% for the temporal windows

A dynamic landslide hazard assessment system for Central America and Hispaniola

D. B. Kirschbaum et al.

Title Page

Abstract

Introduction

Conclusions

References

Tables

Figures



Back

Close

Full Screen / Esc

Printer-friendly Version

Interactive Discussion



A dynamic landslide hazard assessment system for Central America and Hispaniola

D. B. Kirschbaum et al.

Title Page	
Abstract	Introduction
Conclusions	References
Tables	Figures
◀	▶
◀	▶
Back	Close
Full Screen / Esc	
Printer-friendly Version	
Interactive Discussion	

and from 64 to 81 % for the spatial windows over Central America. For the high hazard nowcasts, results are considerably lower, with only a TPR of 26 to 40 % based on the spatial buffers and 26 to 47 % TPR when a 1, 3 and 7 day window was considered. The FPR for Central America was 11 % for the moderate hazard nowcasts and 1 % for the high hazard nowcasts. Table 2 also shows the percentage of landslides that fall above the threshold ($SI \geq 2$) specified in the decision tree structure according to the spatial buffer considered (maximum susceptibility value was considered within each buffered area). For Central America, 12 (10 %) landslides are located within the lowest hazard zone of the susceptible pixels. This may be due to the map's 1 km resolution, where generally "safe" pixels may contain small areas that are prone to landslides, or due to the location of the reported landslide (e.g., the landslide was reported in the landslide runout zone where slopes are very gradual vs. higher up on the slope where the initiation likely occurred). Implications for this spatiotemporal buffering are presented below.

Even with the largest spatiotemporal buffers applied to the reports, not every landslide was predicted. For example, one group of landslides was reported in western Costa Rica along the highway between Balsa de Atenas and Orotina (Fig. 8). This report represents at least 5 different rockfalls that occurred over this section of the road, denoted in the figure as a single point. As the specific location was unknown, a spatial accuracy of 10 km was assigned. The date of the event was reported as 14 April 2010, but the exact time is unknown. The model issued a moderate hazard nowcast for the area east of the reported landslide on both the 14 and 15 April 2010, but not to the west where the rockfalls occurred (Fig. 8a). Because the exact timing of these events was unknown, there was a possible temporal error of 1 day for this event. A second event occurred in the same area on 22 May and a high hazard nowcast was issued in the area of the reported rockfall event (Fig. 8b). Figure 7 plots the rainfall and antecedent rainfall for the same area shown in Fig. 8, where four landslides occurred in 2010: 14 April, 22 May, 30 July, and 5 November. As described above, a nowcast was not issued for the 14 April event because it occurred before antecedent rainfall exceeded



the 50th percentile, despite the daily rainfall exceeding the 50th percentile (Fig. 8a). This specific incident might also be attributed to slope destabilization associated with recent highway construction because relatively little rain was required to move these steep slopes out of equilibrium. The 22 May event generated a high hazard nowcast (Fig. 8b). Rainfall totals for 30 July were not substantial enough to trigger a nowcast. Lastly, a moderate landslide hazard nowcast was issued for the 5 November event, which occurred the day after a very intense precipitation event.

4.2 Hispaniola (2007–2013)

Because of the limited number of data points in Hispaniola, no calibration was performed in this study area. Instead, the thresholds calibrated from the Central American catalog were applied to the rainfall distributions over these islands. A FPR of 9% was observed for the moderate hazard threshold and 1% for the high hazard threshold. The TPR for the exact location and date of the reported landslide was 21% (i.e. the model predicted 5 of the 24 landslide events). The high hazard model performed poorly, with a TPR of 17–21% for the spatial buffers on the day of the landslide. The highest TPR value at the most liberal spatial and temporal window was 54%. This rate is largely due to the fact that half of the landslide events are recorded in locations not considered to be susceptible to landslides, as shown in the far right column of Table 2. The low susceptibility values corresponding to the locations of the reported events may be due to spatial errors in the GLC, since only 13 of the 24 reports were assigned an accuracy better than 5 km. As the buffer size increases, the TPR significantly improves. In addition, 11 of the 24 landslides reportedly occurred on days without any rainfall. It is likely that some degree of temporal error in the catalog explains this issue. The limited data inventory for Hispaniola may also affect the susceptibility map calculations over this area.

A dynamic landslide hazard assessment system for Central America and Hispaniola

D. B. Kirschbaum et al.

Title Page

Abstract

Introduction

Conclusions

References

Tables

Figures

◀

▶

◀

▶

Back

Close

Full Screen / Esc

Printer-friendly Version

Interactive Discussion

4.3 Global Landslide Catalog (2014)

The landslides recorded in the GLC during 2014 make up an independent dataset with which to evaluate the performance of the thresholds developed for the previous years. The 50 points in the GLC were separated by study area. The TPR for the Central American study area for the exact location and date was 58 %, while the FPR was 9 % for the moderate hazard nowcasts. By contrast, the TPR for the 7 landslides in the Hispaniola study area was only 43 %. If the spatial and temporal tolerance is increased, TPR rates range from 63–91 % for Central America and 57–86 % for Hispaniola. Overall, these results are similar to the results for the period 2007–2013. This suggests that the model is not overfitted to a single dataset. On the other hand, the fact that the model does not perform as well in Hispaniola over both time periods suggests that the use of percentile thresholds may be limited to the geographic regions for which they were developed.

The high hazard nowcasts had a FPR of 1 % and consistently gave a TPR of 43 % for the 1 and 3 day windows irrespective of the buffer considered, while the 7 day window produced a TPR of 71 %. The TPR values were consistent across all spatial buffers because this very small dataset (7 events) did not happen to contain any events in which a storm occurred nearby but not at the reported location of landslide. Three of the reported events had rainfall that exceeded the 95th percentile, while 2 of the events occurred on fairly dry days.

The use of validation data with substantial spatial and temporal errors makes the evaluation of model performance difficult. One approach to this issue is to find times and locations near recorded points that may be closer to the true location of the landslides. Considering model outputs within 1 day and 1 km (less than the spatial uncertainty of most reports) of reported landslides raised the TPR of the Central American catalog to 79 % and the TPR of the Hispaniola catalog to 71 %. The performance of the model against a perfectly complete and precise landslide catalog is, unfortunately, unknown. However, when the cluster of 14 landslides with exact locations in Nicaragua was compared to the model output for 23 June 2014, only 1 landslide was not pre-

NHESSD

3, 2847–2882, 2015

A dynamic landslide hazard assessment system for Central America and Hispaniola

D. B. Kirschbaum et al.

Title Page

Abstract

Introduction

Conclusions

References

Tables

Figures

◀

▶

◀

▶

Back

Close

Full Screen / Esc

Printer-friendly Version

Interactive Discussion

dicted (Fig. 9). This cluster only represents a single event, but supports an optimistic interpretation of the results for the larger catalogs.

5 Discussion

The LHASA model is currently implemented in a multi-hazard website servicing Central America and Hispaniola. While the model is currently parameterized for this region, it could be adapted to serve other landslide-prone locations. This flexible binary decision tree framework enables different forcing variables (precipitation, soil moisture) and susceptibility variables to be considered dynamically. The process of transferring the model to another location requires a susceptibility map and an event-based landslide catalog such as the GLC. The simplicity of the model, combined with the fact that rainfall data are made available without cost by NASA for every location between 50° N to 50° S latitude, means that it should be possible for web developers, students, and other programmers to implement the LHASA system rapidly.

The thresholds chosen by calibration in this study represent a compromise between identifying landslide hazard and limiting the number of days on which an alert is issued. As a result, a large number of days are identified as having moderate hazard across the study area, especially during the rainy season. The frequency of hazard nowcasts is reduced when considering the high hazard category using the 95th percentile of the 13 year TRMM record. Ultimately, optimal thresholds could be determined from information on the relative cost to model users of false positives and false negatives. Gathering this economic data is beyond the scope of this study, as it would require extensive consultation with current and potential users of the system.

This model relies on TRMM's TMPA-RT data inputs but GPM's IMERG data will be incorporated into this system in the near future, which will extend the latitudinal boundaries of the precipitation information to 65° N–S and increase the spatiotemporal resolution to 30 min sampling at a 0.1° spatial resolution. If rain gauge or forecasted rainfall data is available for a region, this may also be applied to create a more accurate real-

NHESSD

3, 2847–2882, 2015

A dynamic landslide hazard assessment system for Central America and Hispaniola

D. B. Kirschbaum et al.

Title Page

Abstract

Introduction

Conclusions

References

Tables

Figures

◀

▶

◀

▶

Back

Close

Full Screen / Esc

Printer-friendly Version

Interactive Discussion



time hazard assessment system. The real-time IMERG product was made available in March 2015 while TMPA-RT continues to provide data. Once the IMERG algorithm has been running routinely for a period of time, the entire TRMM archive will be reprocessed to encompass one consistent precipitation dataset for both TRMM and GPM era. We will begin testing the application of IMERG in the near future but will only be able to recompute the percentiles in the analysis and fully recalibrate the model once the reprocessing takes place (tentatively scheduled for 2017). Additional testing is required to determine the effectiveness of satellite products from the Soil Moisture Active Passive (SMAP; <http://nasa.gov/smap>) or modelled soil moisture products within this area of complex terrain and dense tropical vegetation. This is a topic of future study. It may be possible to determine the relationship between the water content of surficial soils and deeper soils (Swenson et al., 2008), resulting in an estimate of pore pressure at critical depths below the ground surface. A different approach would be to separate the geologic and topographic properties currently embodied in the susceptibility map, then use them directly in the decision tree structure. Finally, other triggering variables such as seismicity or temperature may also be considered in a future version of this model by adding another branch to the decision tree. The inclusion of other susceptibility or triggering variables within the LHASA framework is both feasible and fairly straightforward to implement.

Fundamentally, the model calibration for both the susceptibility map and rainfall thresholds can be significantly improved with a more robust, event-based landslide archive. The GLC used here provides global source for investigating rainfall-triggered landslides. However, due to topographic, linguistic and other reporting biases, there remain large gaps in the landslide inventory for many areas. An additional capability of the prototype regional natural hazard website is the ability to access, share, edit and accept volunteered geographic information in multiple languages on landslide events. Future dynamic landslide models are likely to benefit from the improved accuracy and completeness of event-based landslide catalogs compiled and edited through citizen science efforts by large numbers of local end users.

A dynamic landslide hazard assessment system for Central America and Hispaniola

D. B. Kirschbaum et al.

Discussion Paper | Discussion Paper | Discussion Paper | Discussion Paper | Discussion Paper

Title Page

Abstract	Introduction
Conclusions	References
Tables	Figures

◀ ▶

◀ ▶

Back	Close
------	-------

Full Screen / Esc

Printer-friendly Version

Interactive Discussion



6 Conclusions

The LHASA model provides a simple, flexible framework that can be easily calibrated and transferred to other regions. This model is meant to provide a regional near real-time perspective of moderate to high landslide hazard potential and currently lacks the spatial resolution and accuracy to be considered over smaller (e.g., city, municipality) scales. The ultimate goal of this paper is to present the LHASA model framework with a set of calibrated thresholds for Central America and the Caribbean Region. With improved landslide inventory information we feel that the model calibration could be significantly improved. The availability of satellite-based rainfall, susceptibility products and the GLC provide the opportunity to expand this analysis to other susceptible regions. With TRMM and GPM data it is possible to produce rainfall thresholds that incorporate the unique climate of each site, even in locations where no rain gauges exist. Susceptibility maps can benefit from the many landslide catalogs that lack date or time attributes. Thus, dynamic models that incorporate susceptibility maps derived from these long-term catalogs may estimate long-term hazard in ways that models derived solely from recent event-based catalogs cannot.

Given the regional scope of this system, the LHASA model correctly identifies the potential for a majority of the landslide events recorded in the GLC. Although a large number of days without recorded landslides were identified as moderately hazardous, many of these data points may have had slope failures that went unrecorded due to lack of observations, economic impact or other factors. This dynamic landslide model made use of the best available real-time rainfall data. However, future inclusion of GPM's IMERG will enable landslide modelling at finer spatial and temporal resolutions. In addition, improved soil moisture estimates from SMAP may help to better quantify the ground conditions prior to extreme rainfall events. Precipitation forecast data may also be considered within this framework to provide landslide forecasts, rather than near-real-time nowcasts. This is an area of active research. While more sophisticated landslide hazard assessment and prediction models are feasible when considering smaller

NHESSD

3, 2847–2882, 2015

A dynamic landslide hazard assessment system for Central America and Hispaniola

D. B. Kirschbaum et al.

Title Page

Abstract

Introduction

Conclusions

References

Tables

Figures



Back

Close

Full Screen / Esc

Printer-friendly Version

Interactive Discussion

spatial scales and more landslide information, the LHASA model serves as a template for rapid adaptation of remote sensing datasets for dynamic situational awareness of landslide hazards at the regional scale.

Acknowledgements. The authors would like to acknowledge the individuals who helped to develop the GLC, including Stephanie Hill, Lynne Shupp, Teddy Allen, Pradeep Adhikari, Lauren Redmond, David Adler, Kimberly Rodgers, Lee Sanders, Benjamin Hall, and Melanie Franchek. We would also like to thank the individuals who provided expertise in developing the regional susceptibility map used in this study, including Soni Yatheendradas and José Cepeda. A special thank you to Pat Cappelaere for developing the online prototype of this model and the landslide catalog interface. This work was supported by the NASA SERVIR Program, NNH11ZDA001N-SERVIR.

References

- Aleotti, P.: A warning system for rainfall-induced shallow failures, *Eng. Geol.*, 73, 247–265, doi:10.1016/j.enggeo.2004.01.007, 2004.
- Alpert, L.: The areal distribution of mean annual rainfall over the island of Hispaniola, *Mon. Weather Rev.*, 69, 201–204, 1941.
- Baum, R. L., Godt, J. W., and Savage, W. Z.: Estimating the timing and location of shallow rainfall induced landslides using a model for transient, unsaturated infiltration, *J. Geophys. Res.*, 115, F03013, doi:10.1029/2009JF001321, 2010.
- Caine, N.: The rainfall intensity: duration control of shallow landslides and debris flows, *Geogr. Ann. Phys. Geogr.*, 62, 23–27, 1980.
- Cepeda, J., Chávez, J. A., and Cruz Martínez, C.: Procedure for the selection of runout model parameters from landslide back-analyses: application to the metropolitan area of San Salvador, El Salvador, *Landslides*, 7, 105–116, doi:10.1007/s10346-010-0197-9, 2010a.
- Cepeda, J., Höeg, K., Nadim, F.: Landslide-triggering rainfall thresholds: a conceptual framework, *Q. J. Eng. Geol. Hydrogeol.*, 43, 69–84, doi:10.1144/1470-9236/08-066, 2010b.
- Chleborad, A. F., Baum, R. L., and Godt, J. W.: Rainfall Thresholds for Forecasting Landslides in the Seattle, Washington, Area – Exceedance and Probability, US Geol. Surv. Open-File Rep. 2006-1064, US Geological Survey, Reston, VA, 2006.

A dynamic landslide hazard assessment system for Central America and Hispaniola

D. B. Kirschbaum et al.

Title Page

Abstract

Introduction

Conclusions

References

Tables

Figures

◀

▶

◀

▶

Back

Close

Full Screen / Esc

Printer-friendly Version

Interactive Discussion



NHESSD

3, 2847–2882, 2015

A dynamic landslide hazard assessment system for Central America and Hispaniola

D. B. Kirschbaum et al.

Title Page

Abstract

Introduction

Conclusions

References

Tables

Figures

◀

▶

◀

▶

Back

Close

Full Screen / Esc

Printer-friendly Version

Interactive Discussion



FAO/IIASA/ISRIC/ISSCAS/JRC: Harmonized World Soil Database (Version 1.2), available at: <http://webarchive.iiasa.ac.at/Research/LUC/External-World-soil-database/HTML/> (last access: 10 February 2014), 2012.

Fawcett, T.: An introduction to ROC analysis, *Pattern Recogn. Lett.*, 27, 861–874, doi:10.1016/j.patrec.2005.10.010, 2006.

Frattoni, P., Crosta, G., and Sosio, R.: Approaches for defining thresholds and return periods for rainfall-triggered shallow landslides, *Hydrol. Process.*, 1460, 1444–1460, doi:10.1002/hyp.7269, 2009.

French, C. D. and Schenk, C. J.: Map Showing Geology, Oil and Gas Fields, and Geologic Provinces of the Caribbean Region, Open File Report 97-470-K, Denver, CO, 2004.

Gerencia de Geología: Landslide Inventory of El Salvador, El Salvador, available at: <http://www.marn.gob.sv/> (last access: 15 March 2014), 2012.

Godt, J. W., Baum, R. L., and Chleborad, A. F.: Rainfall characteristics for shallow landsliding in Seattle, Washington, USA, *Earth Surf. Proc. Land.*, 31, 97–110, doi:10.1002/esp.1237, 2006.

Guha-Sapir, D., Below, R., and Hoyois, P.: EM-DAT: International Disaster Database, Univ. Cathol. Louvain, Brussels, Belgium, available at: <http://www.em-dat.net>, last access: 20 March 2014.

Guzzetti, F., Peruccacci, S., Rossi, M., and Stark, C. P.: Rainfall thresholds for the initiation of landslides in central and southern Europe, *Meteorol. Atmos. Phys.*, 98, 239–267, 2007.

Guzzetti, F., Peruccacci, S., Rossi, M., and Stark, C. P.: The rainfall intensity–duration control of shallow landslides and debris flows: an update, *Landslides*, 5, 3–17, doi:10.1007/s10346-007-0112-1, 2008.

Hijmans, R. and van Etten, J.: raster: Geographic Data Analysis and Modeling, R Package version 2.30-40, <http://cran.r-project.org/web/packages/raster/>, last access: 1 September 2014.

Hong, Y., Adler, R., and Huffman, G.: Evaluation of the potential of NASA multi-satellite precipitation analysis in global landslide hazard assessment, *Geophys. Res. Lett.*, 33, 1–5, doi:10.1029/2006GL028010, 2006.

Hong, Y., Adler, R., and Huffman, G.: Use of satellite remote sensing data in the mapping of global landslide susceptibility, *Nat. Hazards*, 43, 245–256, doi:10.1007/s11069-006-9104-z, 2007.

Hromadka II, T. V. and Phillips, M.: Use of rainfall statistical return periods to determine threshold for mass wasting events, *Environ. Eng. Geosci.*, 16, 343–356, 2010.

A dynamic landslide hazard assessment system for Central America and Hispaniola

D. B. Kirschbaum et al.

Title Page	
Abstract	Introduction
Conclusions	References
Tables	Figures
◀	▶
◀	▶
Back	Close
Full Screen / Esc	
Printer-friendly Version	
Interactive Discussion	

Huffman, G. J., Adler, R. F., Bolvin, D. T., Gu, G., Nelkin, E. J., Bowman, K. P., Hong, Y., Stocker, E. F., and Wolff, D. B.: The TRMM Multisatellite Precipitation Analysis (TMPA): quasi-global, multiyear, combined-sensor precipitation estimates at fine scales, *J. Hydrometeorol.*, 8, 38–55, doi:10.1175/JHM560.1, 2007.

5 Huffman, G. J., Adler, R. F., Bolvin, D. T., and Nelkin, E. J.: The TRMM Multi-satellite Precipitation Analysis (TMPA), in: *Satellite Rainfall Applications for Surface Hydrology*, edited by: Hossain, F. and Gebremichael, M., Springer Verlag, Dordrecht, 3–22, 2010.

INETER: Localización de deslizamientos en las comunidades Cerro Azul y La Gongolona, municipio El Ayote, 2014.

10 IPCC: *Climate Change 2007: Working Group I: The Physical Science Basis*, IPCC Fourth., edited by: Solomon, S., Qin, D., Manning, M., Chen, Z., Marquis, M., Averyt, K. B., Tignor, M., and Miller, H. L., Cambridge University Press, Cambridge and New York, available at: http://www.ipcc.ch/publications_and_data/ar4/wg1/en/contents.html (last access: 10 January 2015), 2007.

15 Jackson, T. J. and Schmugge, T. J.: Vegetation effects on the microwave emission of soils, *Remote Sens. Environ.*, 36, 203–212, doi:10.1016/0034-4257(91)90057-D, 1991.

Kirschbaum, D. B., Adler, R., Hong, Y., Hill, S., and Lerner-Lam, A.: A global landslide catalog for hazard applications: method, results, and limitations, *Nat. Hazards*, 52, 561–575, doi:10.1007/s11069-009-9401-4, 2010.

20 Kirschbaum, D. B., Adler, R., Adler, D., Peters-Lidard, C., and Huffman, G.: Global distribution of extreme precipitation and high-impact landslides in 2010 relative to previous years, *J. Hydrometeorol.*, 13, 1536–1551, doi:10.1175/JHM-D-12-02.1, 2012a.

Kirschbaum, D. B., Adler, R., Hong, Y., Kumar, S., Peters-Lidard, C., and Lerner-Lam, A.: Advances in landslide nowcasting: evaluation of a global and regional modeling approach, *Environ. Earth Sci.*, 66, 1683–1696, doi:10.1007/s12665-011-0990-3, 2012b.

25 Kirschbaum, D. B., Stanley, T., Yatheendradas, S., and Cepeda, J.: Modeling landslide susceptibility over large regions with fuzzy overlay, *Landslides*, in press, 2015a.

Kirschbaum, D. B., Stanley, T., and Zhou, Y.: Spatial and temporal analysis of a Global Landslide Catalog, *Geomorphology*, in press, doi:10.1016/j.geomorph.2015.03.016 2015b.

30 Kohler, M. and Linsley, R.: Predicting the Runoff From Storm Rainfall, *Weather Bur. Res. Pap. No. 34*, available at: <http://pbadupws.nrc.gov/docs/ML0819/ML081900279.pdf> (last access: 2 February 2015), 1951.



A dynamic landslide hazard assessment system for Central America and Hispaniola

D. B. Kirschbaum et al.

Title Page

Abstract

Introduction

Conclusions

References

Tables

Figures

◀

▶

◀

▶

Back

Close

Full Screen / Esc

Printer-friendly Version

Interactive Discussion

- Larsen, M. C. and Simon, A.: A rainfall intensity-duration threshold for landslides in a humid-tropical environment, Puerto Rico, *Geogr. Ann. Phys. Geogr.*, 75, 13–23, 1993.
- Lee, S. and Pradhan, B.: Landslide hazard mapping at Selangor, Malaysia using frequency ratio and logistic regression models, *Landslides*, 4, 33–41, doi:10.1007/s10346-006-0047-y, 2007.
- Montgomery, D. R. and Dietrich, W. E.: A physically based model for the topographic control on shallow landsliding, *Water Resour. Res.*, 30, 1153, doi:10.1029/93WR02979, 1994.
- Mora, S. C.: Extent and socio-economic significance of slope-instability on the island of Hispaniola (Haiti and Dominican Republic), in: *Energy and Mineral Potential of Central America-Caribbean Regions*, edited by: Miller, R. L., Escalante, G., Reinemund, J. A., and Bergin, M. J., Springer-Verlag, Berlin, Heidelberg, 1995.
- Mora, S. C. and Vahrson, W.-G.: Macrozonation Methodology for Landslide Hazard Determination, *Bull. Assoc. Eng. Geol.*, 31, 49–58, 1994.
- Nadim, F., Kjekstad, O., Peduzzi, P., Herold, C., and Jaedicke, C.: Global landslide and avalanche hotspots, *Landslides*, 3, 159–173, doi:10.1007/s10346-006-0036-1, 2006.
- Nadim, F., Cepeda, J., Sandersen, F., Jaedicke, C., and Heyerdahl, H.: Prediction of rainfall-induced landslides through empirical and numerical models, in: *Rainfall-Induced Landslides: Mechanisms, Monitoring Techniques and Nowcasting Models For Early-Warning Systems, First Italian Workshop on Landslides, Naples*, 1–10, 2009.
- Njoku, E. G., Jackson, T. J., Lakshmi, V., Chan, T. K., and Nghiem, S. V.: Soil moisture retrieval from AMSR-E, *IEEE T. Geosci. Remote*, 41, 215–229, 2003.
- Pradhan, B. and Lee, S.: Landslide susceptibility assessment and factor effect analysis: backpropagation artificial neural networks and their comparison with frequency ratio and bivariate logistic regression modelling, *Environ. Modell. Softw.*, 25, 747–759, doi:10.1016/j.envsoft.2009.10.016, 2010.
- Ray, R. L. and Jacobs, J. M.: Relationships among remotely sensed soil moisture, precipitation and landslide events, *Nat. Hazards*, 43, 211–222, doi:10.1007/s11069-006-9095-9, 2007.
- Rossi, M., Kirschbaum, D., Luciani, S., and Guzzetti, F.: Comparison of TRMM satellite rainfall estimates with rain gauge data and landslide empirical rainfall thresholds under different morphological and climatological conditions in Italy, in: *EGU General Assembly*, 22–27 April, Vienna, Austria, 9354 pp., available at: <http://meetingorganizer.copernicus.org/EGU2012/EGU2012-9354.pdf> (last access: 10 January 2015), 2012.

A dynamic landslide hazard assessment system for Central America and Hispaniola

D. B. Kirschbaum et al.

Title Page

Abstract

Introduction

Conclusions

References

Tables

Figures

◀

▶

◀

▶

Back

Close

Full Screen / Esc

Printer-friendly Version

Interactive Discussion



Swenson, S., Famiglietti, J., Basara, J., and Wahr, J.: Estimating profile soil moisture and groundwater variations using GRACE and Oklahoma Mesonet soil moisture data, *Water Resour. Res.*, 44, W01413, doi:10.1029/2007WR006057, 2008.

Team, R. C.: R: a Language and Environment For Statistical Computing, R Found. Stat. Comput., Version 3.0.1, available at: <http://www.r-project.org/>, last access: 16 May 2013.

Terlien, M. T. J.: The determination of statistical and deterministic hydrological landslide-triggering thresholds, *Environ. Geol.*, 35, 124–130, 1998.

Van Den Eeckhaut, M., Reichenbach, P., Guzzetti, F., Rossi, M., and Poesen, J.: Combined landslide inventory and susceptibility assessment based on different mapping units: an example from the Flemish Ardennes, Belgium, *Nat. Hazards Earth Syst. Sci.*, 9, 507–521, doi:10.5194/nhess-9-507-2009, 2009.

Verdin, K. L., Godt, J., Funk, C., Pedreros, D., Worstell, B., and Verdin, J.: Development of a Global Slope Dataset for Estimation of Landslide Occurrence Resulting from Earthquakes, *US Geol. Surv. Open-File*, US Geological Survey, Reston, VA, 1–29, 2007.

Wieczorek, G. F.: Effect of rainfall intensity and duration on debris flows in central Santa Cruz Mountains, in: *Debris Flows/Avalanches: Process, Recognition, and Mitigation*, *Reviews in Engineering Geology*, vol. 7, edited by: Costa, J. E. and Wieczorek, G. F., Geological Society of America, Boulder, CO, 93–104, 1987.

A dynamic landslide hazard assessment system for Central America and Hispaniola

D. B. Kirschbaum et al.

Table 1. Data sources used in the LHASA model.

Data Type	Data Set	Resolution	Extent	Source and Details
Slope	70th quantile slope, USGS	30 arcsec (~ 1 km)	65° N–S	Verdin et al. (2007) derived from 3 arcsec SRTM DEM
Soils	Harmonized World Soil Database	30 arcsec, nominal scale (1 : 5 000 000)	Global	FAO/IIASA/ISRIC/ISSCAS/JRC (2012)
Roads	Global Roads Open Access Data Set, Version 1	Multiple sources (accuracy ranges from 30 to 1265 m)	Global	CIESIN and ITOS (2013)
Fault zones	Map Showing Geology, Oil and Gas Fields, and Geologic Provinces of the Caribbean Region	1 : 2 500 000	Central America and Caribbean	French and Schenk (2004)
Rainfall	TRMM Multi-satellite Precipitation Analysis Version 7, Real-Time	0.25°, 3 hourly resolution 3 hourly resolution	50° N–S	http://pmm.nasa.gov
Landslide Inventory	GLC, 322 points in region MARN, 297 points	Accuracy is defined on a point-by-point basis Various mapping scales and survey types	Global El Salvador	Kirschbaum et al. (2010) Gerencia de Geología (2012)

Title Page

Abstract

Introduction

Conclusions

References

Tables

Figures

◀

▶

◀

▶

Back

Close

Full Screen / Esc

Printer-friendly Version

Interactive Discussion

A dynamic landslide hazard assessment system for Central America and Hispaniola

D. B. Kirschbaum et al.

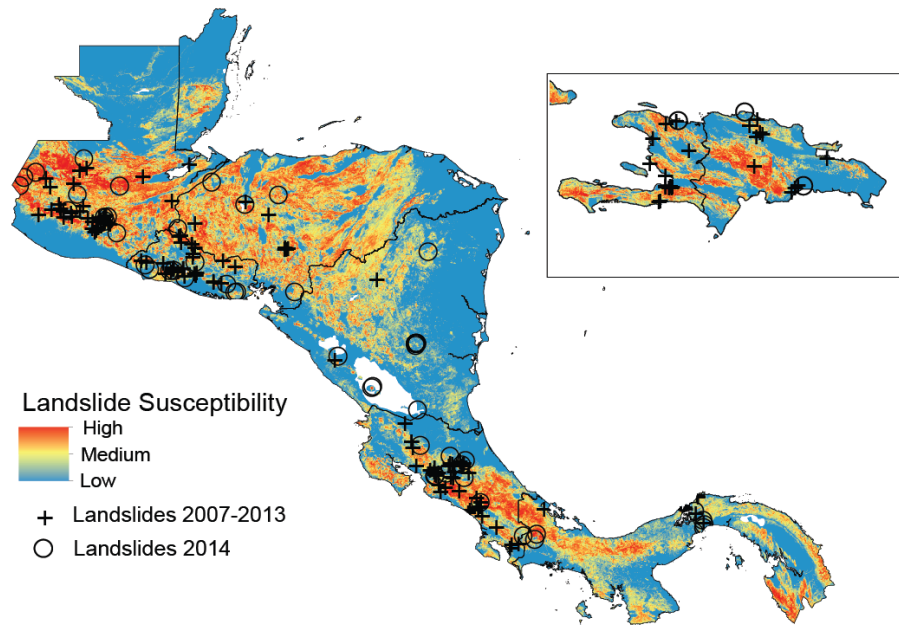


Figure 1. Regional landslide susceptibility map created using a fuzzy overlay methodology from global slope, soil, and road databases, as well as a regional map of faults at a resolution 30 arcsec (approximately 1 km) resolution (Kirschbaum et al., 2015a). Landslides recorded in the study areas are shown for the years 2007–2013 (+) and 2014 (O). 166 landslide reports are from the Global Landslide Catalog and 24 landslides in El Salvador were selected from the MARN catalog. Large numbers of landslides are located near capital cities, implying some degree of reporting bias. Inset map shows landslide susceptibility map for Hispaniola with 31 reported landslides.

[Title Page](#)
[Abstract](#)
[Introduction](#)
[Conclusions](#)
[References](#)
[Tables](#)
[Figures](#)
[◀](#)
[▶](#)
[◀](#)
[▶](#)
[Back](#)
[Close](#)
[Full Screen / Esc](#)
[Printer-friendly Version](#)
[Interactive Discussion](#)

A dynamic landslide hazard assessment system for Central America and Hispaniola

D. B. Kirschbaum et al.

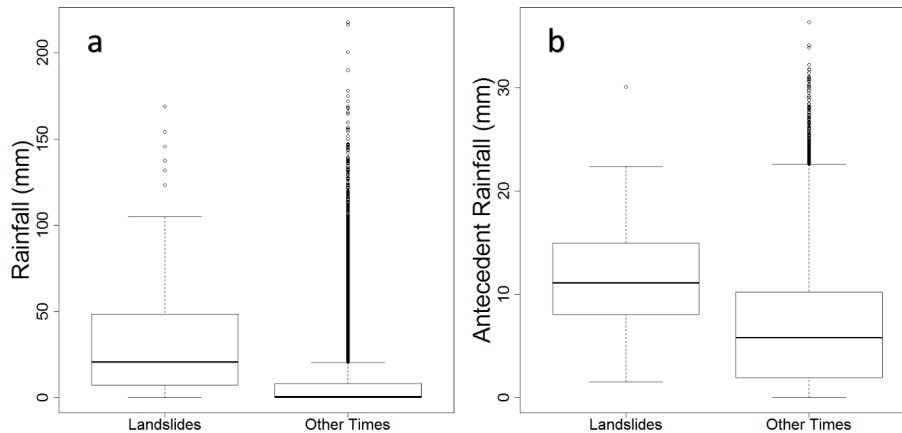


Figure 4. Comparison of (a) daily rainfall and (b) antecedent rainfall distributions (in mm) for days with and without reported landslides. Results are plotted only for locations where landslides were historically recorded and include 123 landslides from Central America and 316 697 data from other times where landslides were not reported. Due to the limitations in the GLC, it is likely that unreported landslides may have occurred in the category we are classifying as “other times”. The distributions substantially overlap, suggesting that daily and antecedent rainfall thresholds cannot classify the data perfectly into landslide events and non-events.

[Title Page](#)
[Abstract](#)
[Introduction](#)
[Conclusions](#)
[References](#)
[Tables](#)
[Figures](#)
[◀](#)
[▶](#)
[◀](#)
[▶](#)
[Back](#)
[Close](#)
[Full Screen / Esc](#)
[Printer-friendly Version](#)
[Interactive Discussion](#)

A dynamic landslide hazard assessment system for Central America and Hispaniola

D. B. Kirschbaum et al.

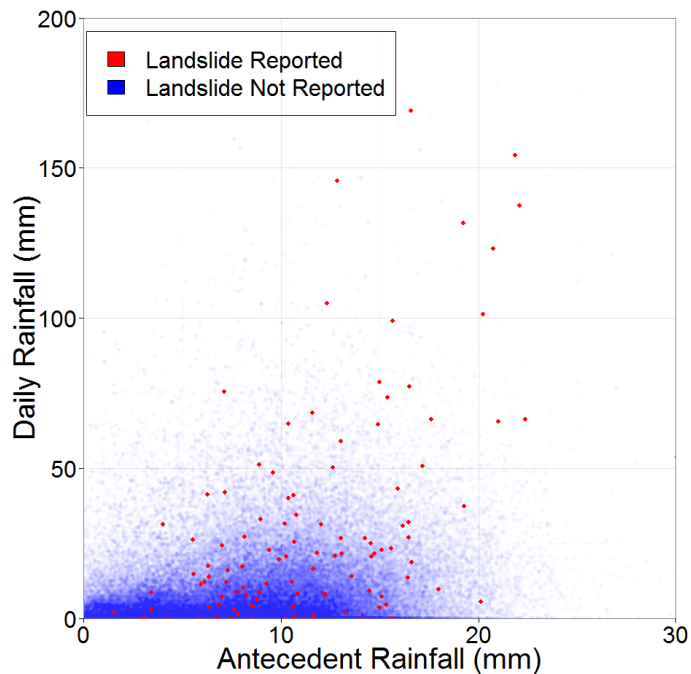


Figure 5. Scatter plot showing the distribution of landslides (red) and dates without recorded landslides (blue) comparing antecedent rainfall and daily rainfall.

[Title Page](#)[Abstract](#)[Introduction](#)[Conclusions](#)[References](#)[Tables](#)[Figures](#)[◀](#)[▶](#)[◀](#)[▶](#)[Back](#)[Close](#)[Full Screen / Esc](#)[Printer-friendly Version](#)[Interactive Discussion](#)

A dynamic landslide hazard assessment system for Central America and Hispaniola

D. B. Kirschbaum et al.

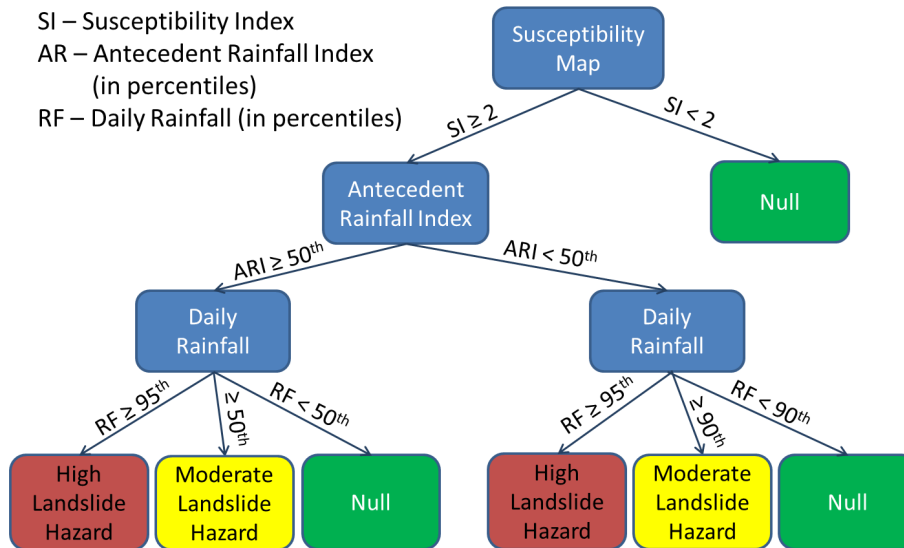


Figure 6. Decision tree structure highlighting the three tiers of decisions made in this model on a pixel-by-pixel basis across the study area, which is computed daily. First, if a pixel has an $SI \geq 2$, the antecedent rainfall index (ARI) is considered using the 50th percentile value. If the $ARI \geq 50$ th percentile, a nowcast is issued if the daily rainfall exceeds the 50th percentile (moderate hazard) or 95th percentile (high hazard). If the $ARI < 50$ th percentile, a nowcast is issued if the daily rainfall exceeds the 90th percentile (moderate hazard) or 95th percentile (high hazard). In all other cases, there is no nowcast issued (Null).

Title Page	
Abstract	Introduction
Conclusions	References
Tables	Figures
◀	▶
◀	▶
Back	Close
Full Screen / Esc	
Printer-friendly Version	
Interactive Discussion	



A dynamic landslide hazard assessment system for Central America and Hispaniola

D. B. Kirschbaum et al.

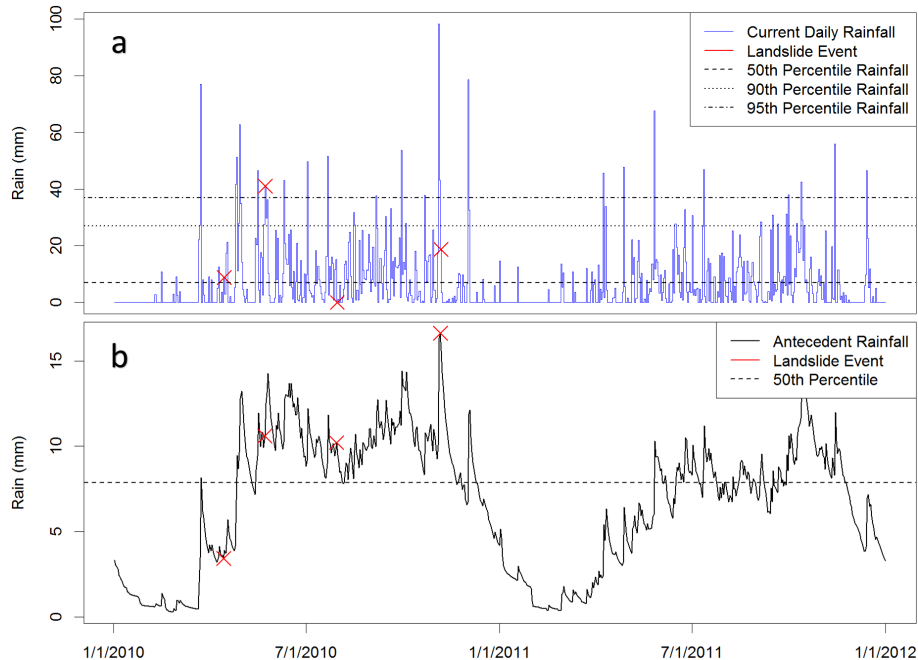


Figure 7. Example time series of (a) rainfall and (b) antecedent rainfall for a pixel west of San Jose, Costa Rica. The time series highlight 4 landslides that were reported in this area in 2010: 14 April, 22 May, 30 July, and 5 November (shown as red crosses). The first landslide (Fig. 8a) occurred very early in the year, before the peak rainy season and a nowcast was not issued. The series indicates that a moderate hazard nowcast was triggered for the 5 November event and a high hazard nowcast was triggered for the 22 May event (Fig. 8b). However, due to the antecedent rainfall for 14 April event and low rainfall totals for the 30 July event, no nowcasts were issued.

Title Page

Abstract

Introduction

Conclusions

References

Tables

Figures

◀

▶

◀

▶

Back

Close

Full Screen / Esc

Printer-friendly Version

Interactive Discussion

A dynamic landslide hazard assessment system for Central America and Hispaniola

D. B. Kirschbaum et al.

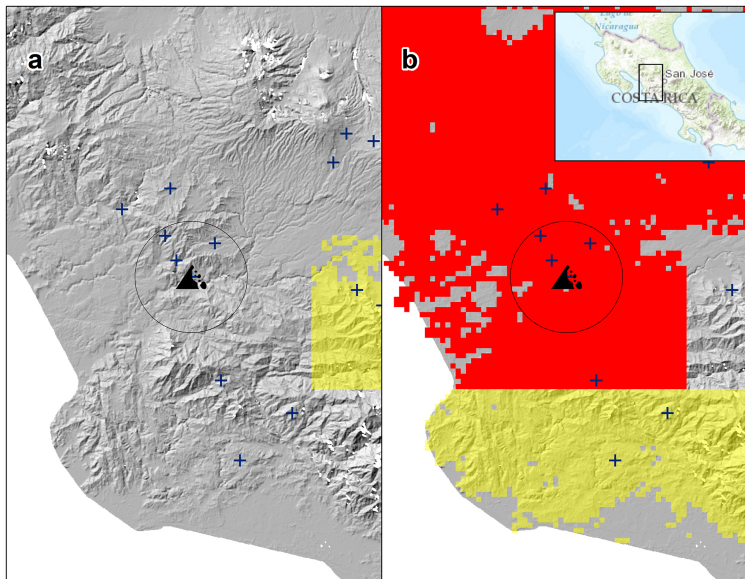


Figure 8. This shows the results of the model nowcasts for a cluster of rockfalls (denoted by a single black rockfall icon) that occurred within the same area of the highway near Caldera, Costa Rica for two dates in 2010: **(a)** 14 April and **(b)** 22 May. The black circle indicates the estimated maximum spatial error of these landslide reports (10 km), suggesting that the landslides could have occurred anywhere within that area. Blue crosses indicate the locations of other landslides in the GLC from 2007–2013. The 14 April event did not generate a moderate hazard nowcast (yellow), but enough rainfall was observed to the east of the landslide location to trigger a moderate hazard nowcast. Comparatively, the 22 May event **(b)** shows that many high and moderate hazard nowcasts were generated within the proximity of the reported event.

Title Page

Abstract

Introduction

Conclusions

References

Tables

Figures

◀

▶

◀

▶

Back

Close

Full Screen / Esc

Printer-friendly Version

Interactive Discussion

A dynamic landslide hazard assessment system for Central America and Hispaniola

D. B. Kirschbaum et al.

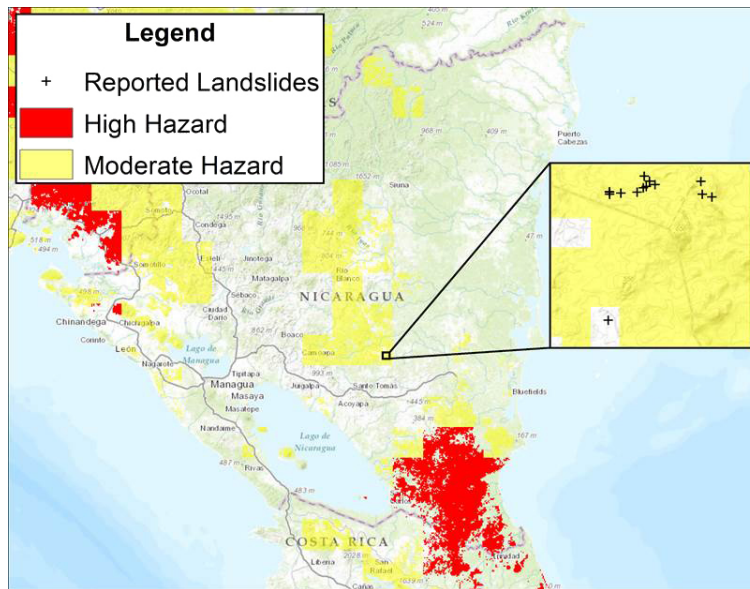


Figure 9. Landslide hazard potential for 23 June 2014. Black crosses indicate locations where a cluster of landslides occurred near El Ayote, Nicaragua. Yellow pixels (moderate hazard) and red pixels (high hazard) are shown for that day. 13 of 14 landslides were predicted by the moderate hazard category. The southernmost landslide was located in a relatively flat location that had been mapped as having “very low” landslide susceptibility, so it was not predicted, despite daily rainfall exceeding the 50th percentile threshold.

Title Page

Abstract

Introduction

Conclusions

References

Tables

Figures

◀

▶

◀

▶

Back

Close

Full Screen / Esc

Printer-friendly Version

Interactive Discussion