

Interactive comment on “Probability assessment on the recurring Meishan earthquake in central Taiwan with a new non-stationary analysis” by J. P. Wang and X. Yun

J. P. Wang and X. Yun

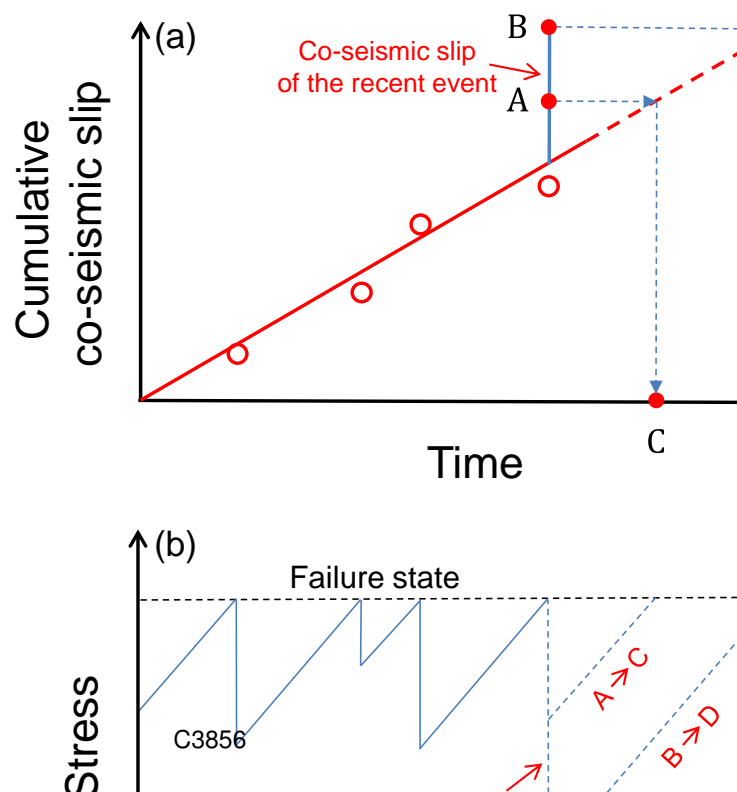
jpwang@ust.hk

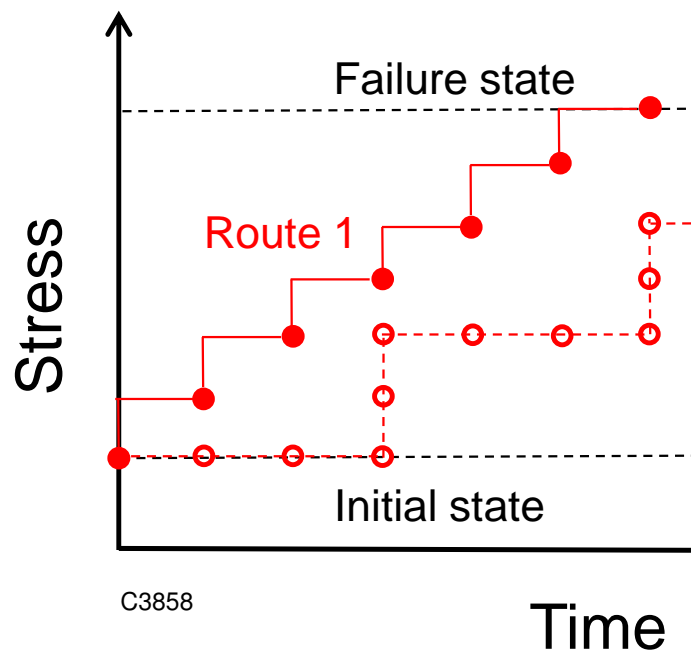
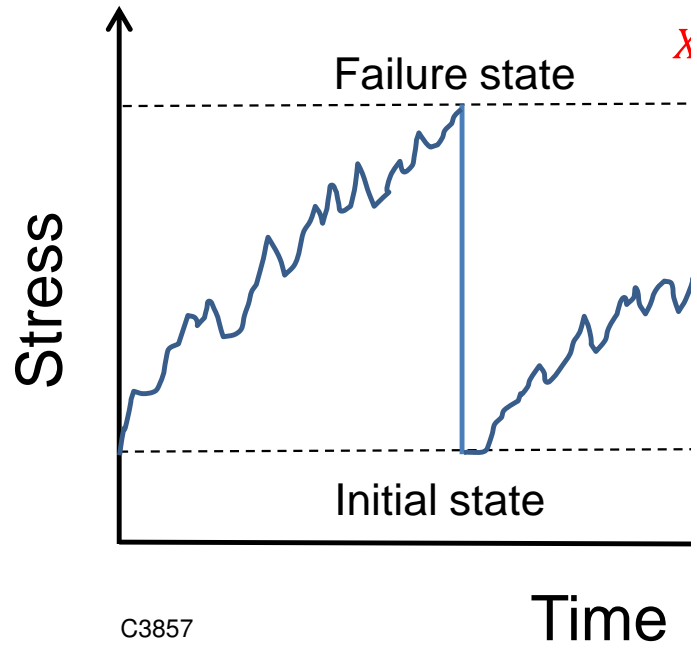
Received and published: 10 July 2015

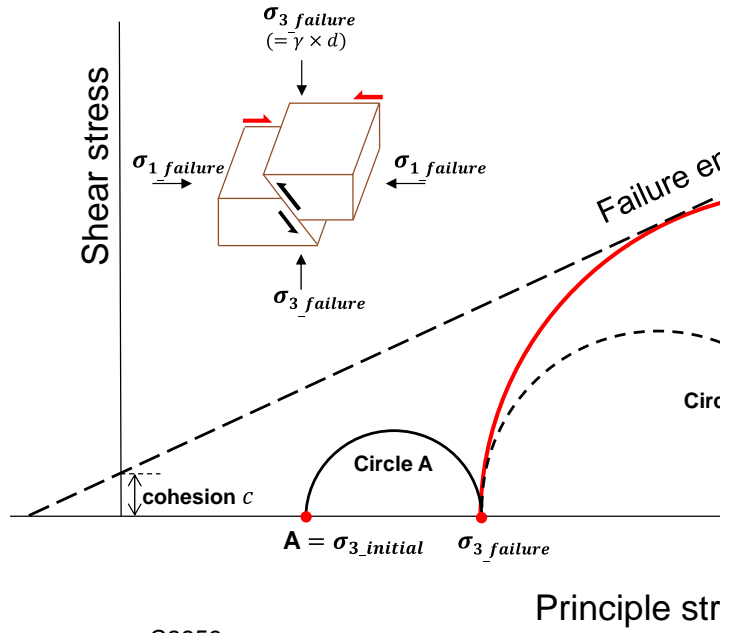
The comment was uploaded in the form of a supplement:
<http://www.nat-hazards-earth-syst-sci-discuss.net/2/C3855/2015/nhessd-2-C3855-2015-supplement.pdf>

Interactive comment on Nat. Hazards Earth Syst. Sci. Discuss., 2, 4831, 2014.

C3855

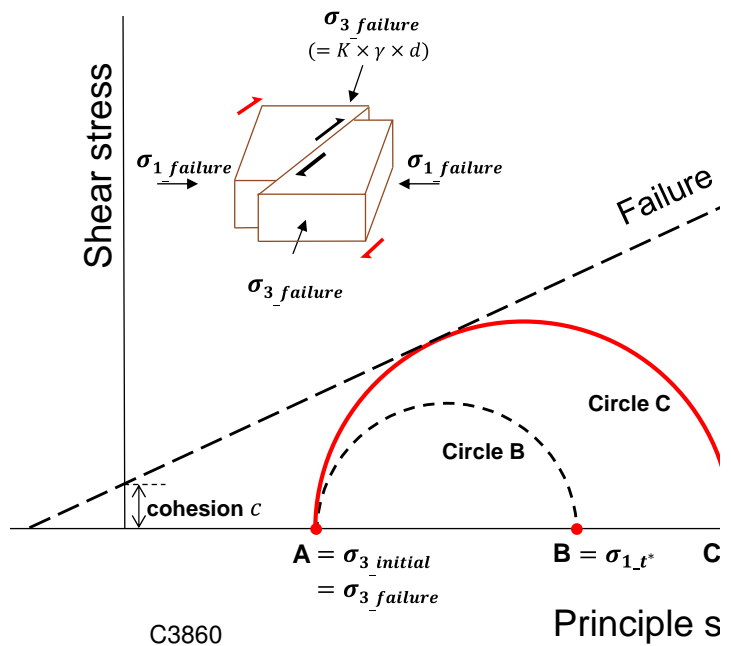




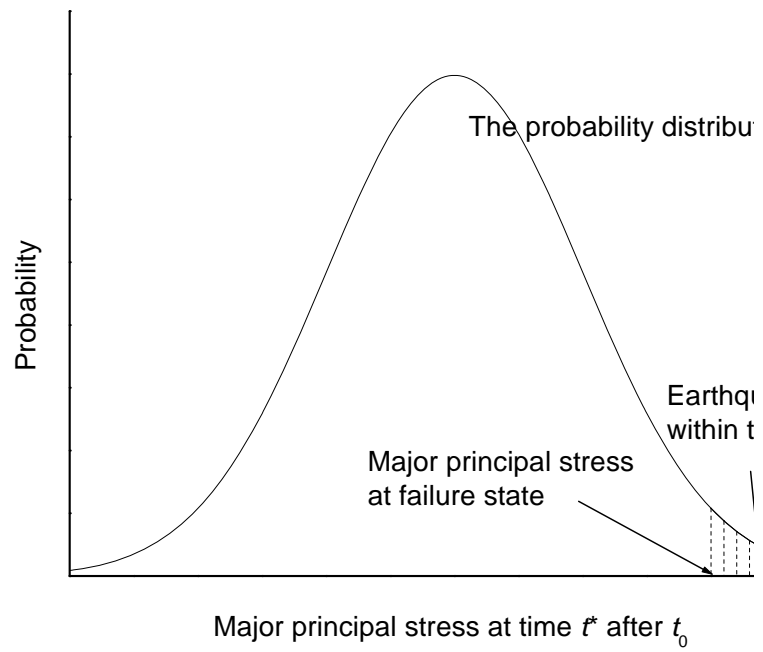


C3859

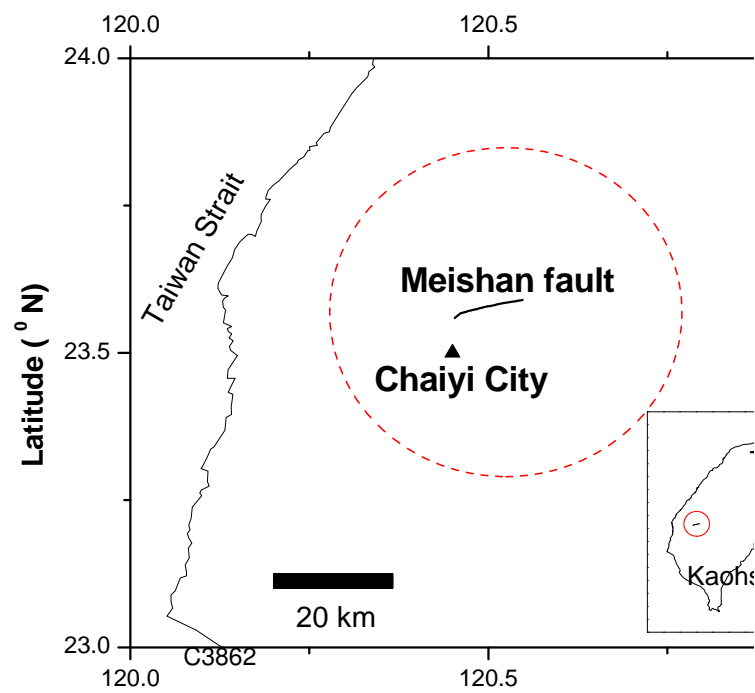
Fig. 4 Schematic diagram illustrating Mohr-Coulomb failure criterion; Circle A represents the Mohr circle at failure.

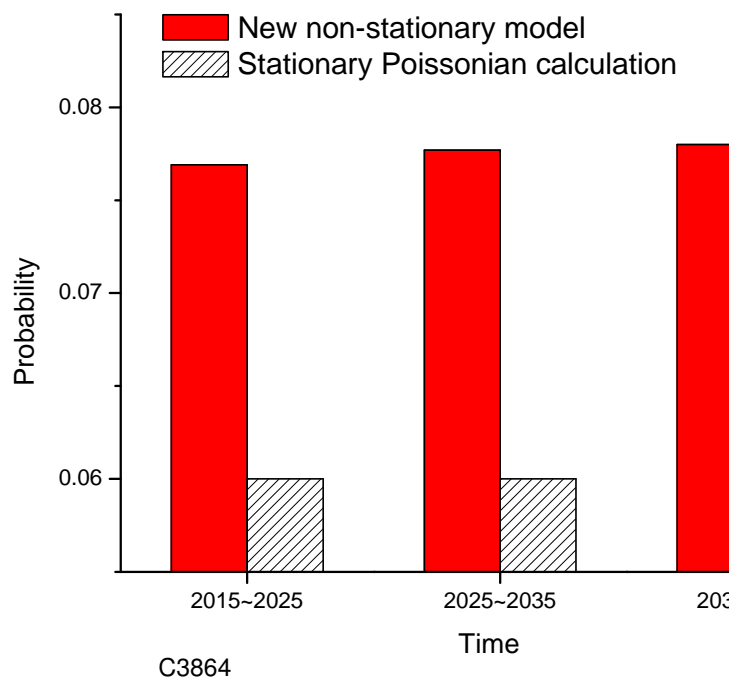
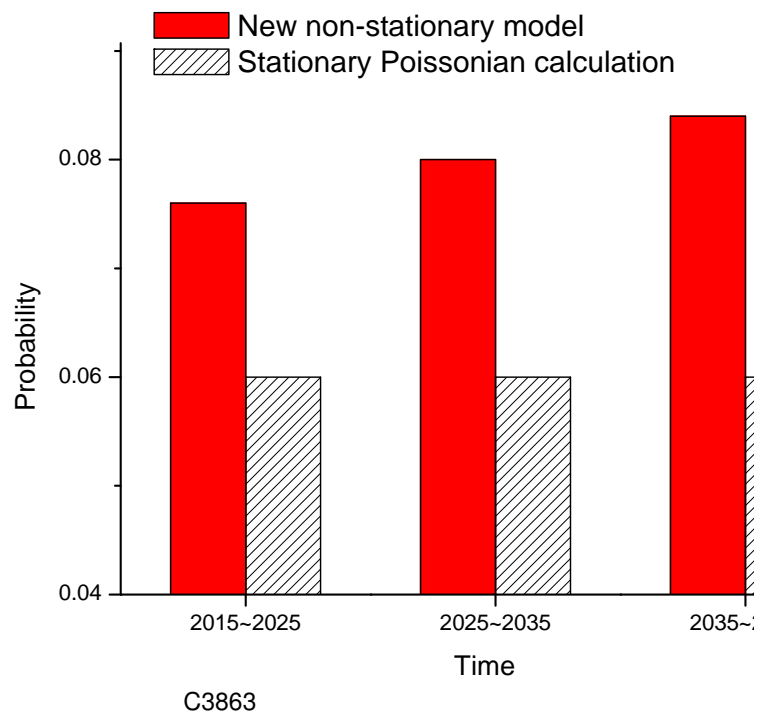


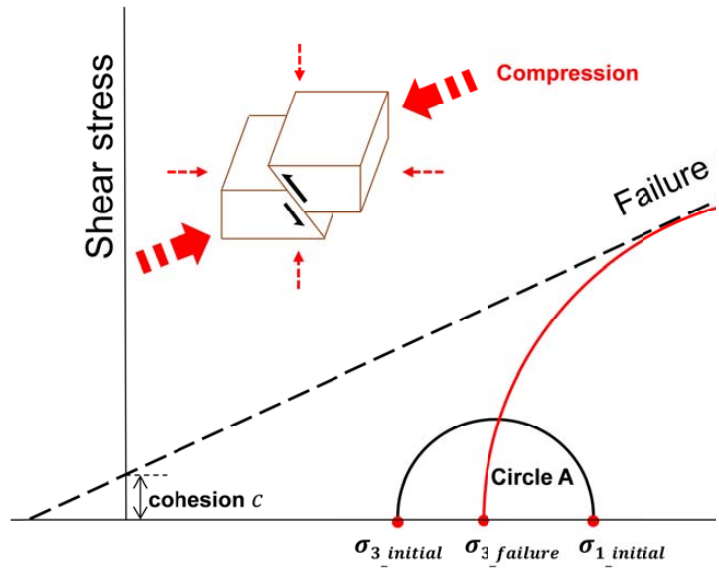
C3860



C3861







Principle s

C3867

Fig. 12 The Mohr circles for evaluating the non-stationary earthquake probability s

