



Interactive
Comment

Interactive comment on “Analysis of changes in post-seismic landslide distribution and its effect on building reconstruction” by W. Yang et al.

W. Yang et al.

yangwtgeo@gmail.com

Received and published: 16 February 2015

The authors would like to thank the reviewers for their invaluable comments and suggestions, which have been of significant help for revising and improving the quality of this paper. All figures have been revised and the “Results” section has been re-organized (please refer to the “Response to anonymous #1”). The point-to-point response to referee’s comments and corresponding changes are listed below.

Response to Referee #2:

1) In addition to the comments from the reviewer 1 should be addressed, the China map of the Fig. 1 should be complete. The latitude and longitude also should be added on the sub-panels.

C3430

Full Screen / Esc

Printer-friendly Version

Interactive Discussion

Discussion Paper



Response:

We have revised Fig. 1. Now the China map is complete, and the information of latitude and longitude has been added on the sub-panels.

Figure 1 Caption: Schematic map of the study area.

2) For the Fig. 2, it should be better the contours be more thick every five lines. In Fig. 4, the colors of the riverbed on the panel b and its legend are different.

Response:

We have revised Fig. 2 and Fig. 4.

Figure 2 Caption: Accumulation of debris on the riverbed at four locations and distribution of flooded houses during the 2013 August flood (photos of a1, b1, c1 and d1 were taken in August 2012; a2, b2, c2 and d2 were taken in September 2013).

Figure 4 Caption: Spatial changes in landslides and buildings.

Please also note the supplement to this comment:

<http://www.nat-hazards-earth-syst-sci-discuss.net/2/C3430/2015/nhessd-2-C3430-2015-supplement.pdf>

Interactive comment on Nat. Hazards Earth Syst. Sci. Discuss., 2, 5501, 2014.

NHESD

2, C3430–C3434, 2015

Interactive
Comment

Full Screen / Esc

Printer-friendly Version

Interactive Discussion

Discussion Paper



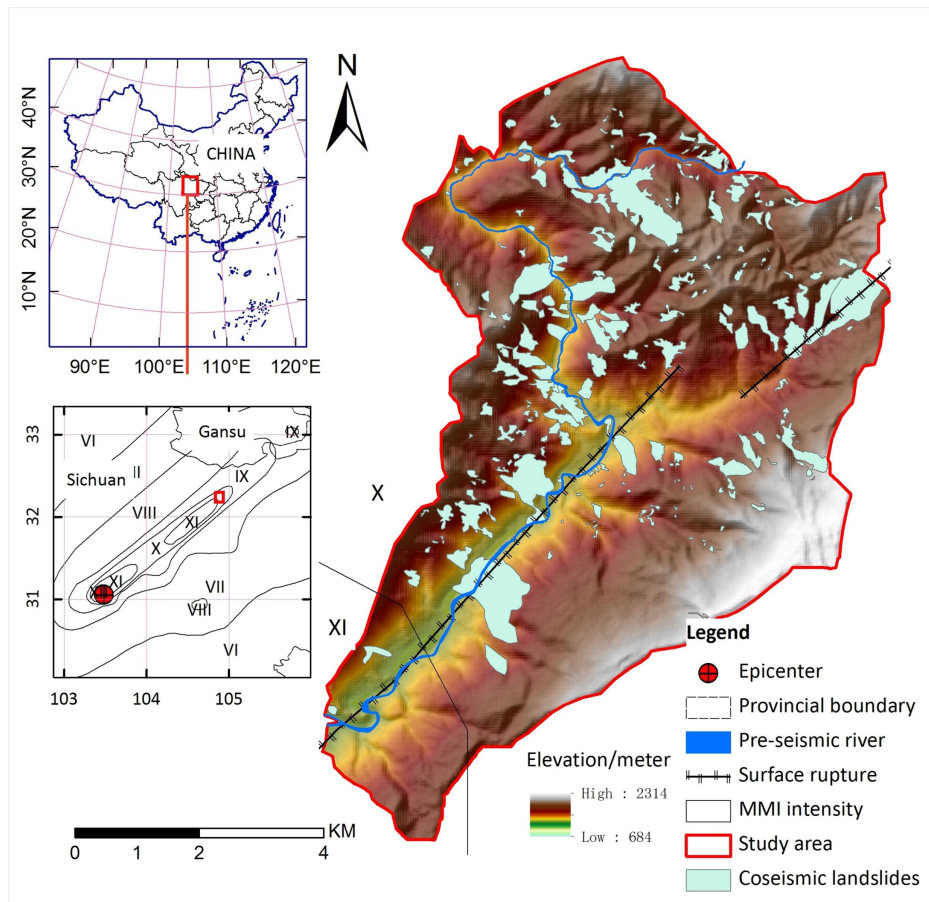


Fig. 1. Figure 1. Schematic map of the study area.

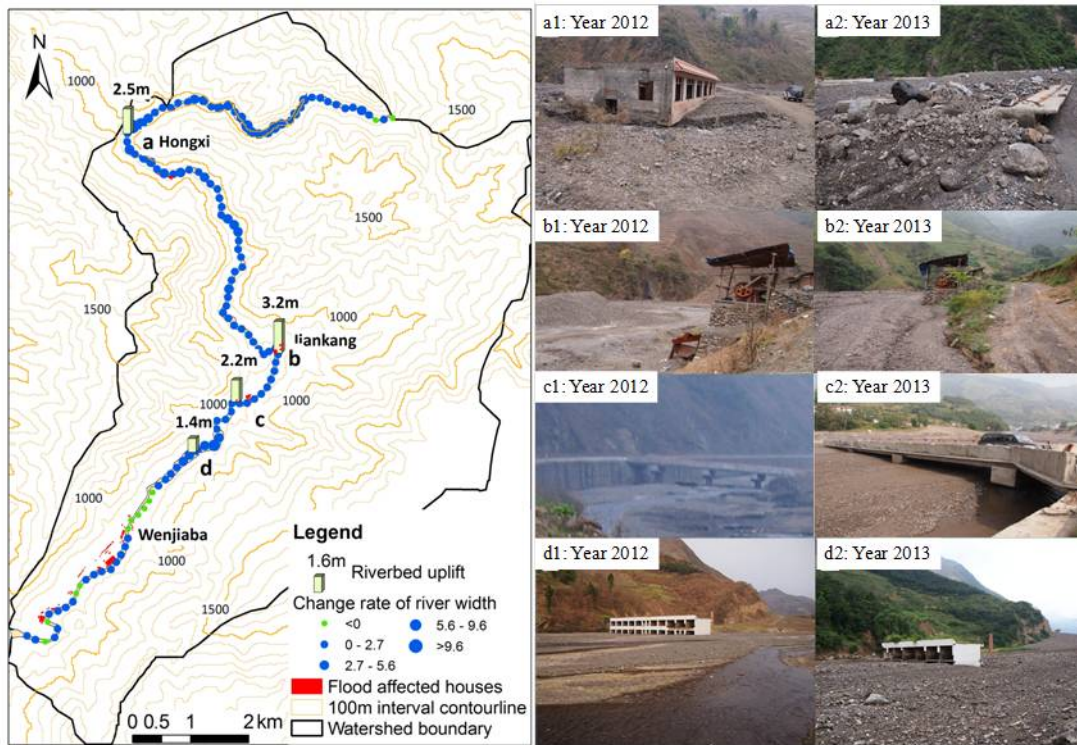


Fig. 2. Figure 2. Accumulation of debris on the riverbed at four locations and distribution of flooded houses during the 2013 August flood (photos of a1, b1, c1 and d1 were taken in August 2012; a2, b2, c2 and d2 are taken in August 2013)

Full Screen / Esc

Printer-friendly Version

Interactive Discussion

Discussion Paper



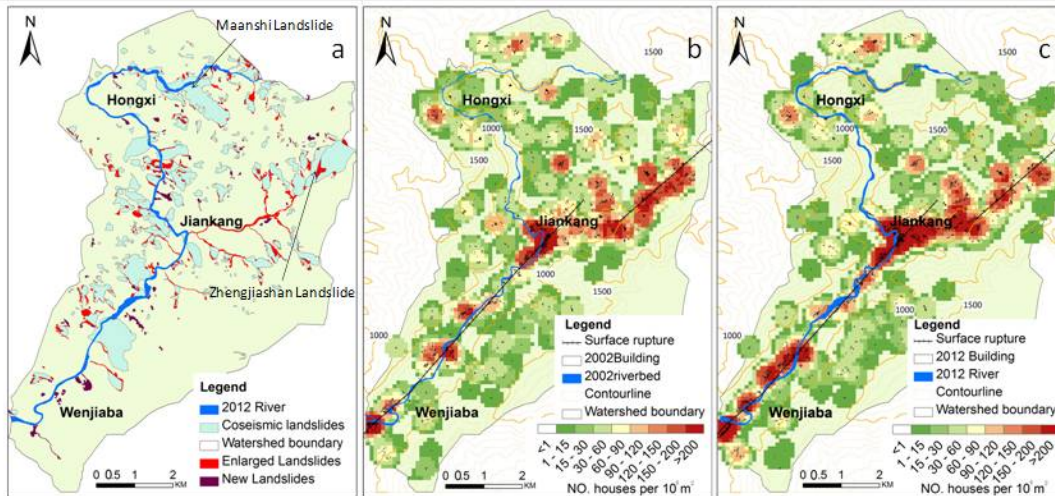


Fig. 3. Figure 4. Spatial changes in landslides and buildings.

Full Screen / Esc

Printer-friendly Version

Interactive Discussion

Discussion Paper