

***Interactive comment on “Developing an effective
2-D urban flood inundation model for city
emergency management based on cellular
automata” by L. Liu et al.***

L. Liu et al.

liulin2@mail.sysu.edu.cn

Received and published: 1 January 2015

Dear Reviewer, Thank you for all your very helpful comments. We have revised the paper based on the suggestions. Please refer to the attachment below for the specific changes. Sincerely yours, Lin Liu, Yong Liu

Please also note the supplement to this comment:

<http://www.nat-hazards-earth-syst-sci-discuss.net/2/C2883/2015/nhessd-2-C2883-2015-supplement.pdf>

C2883

Interactive comment on Nat. Hazards Earth Syst. Sci. Discuss., 2, 6173, 2014.

C2884

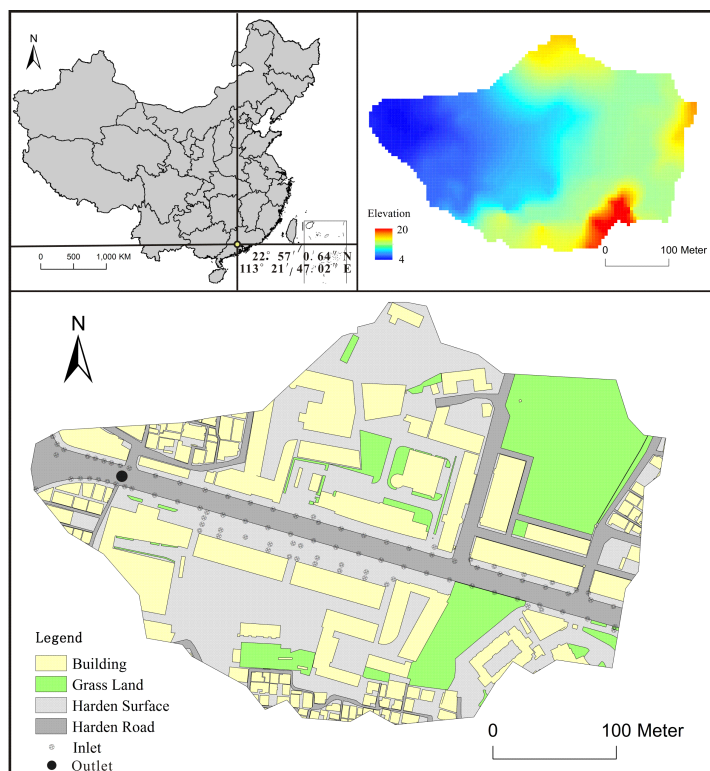


Fig. 1.

C2885

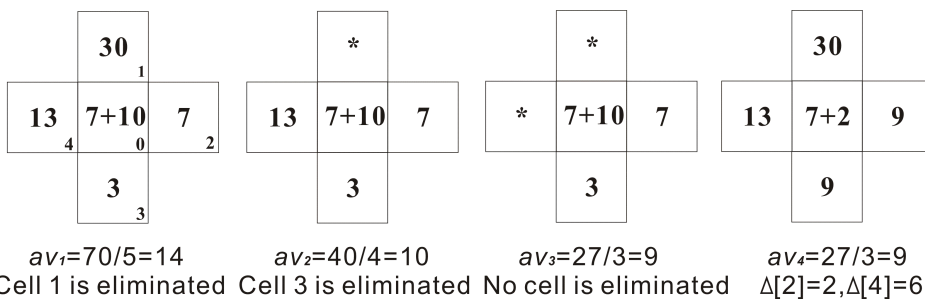


Fig. 2.

C2886