

Developing an Index for Heavy Convective Rainfall Forecasting over a Mediterranean coastal area

Korologou M.¹, Flocas H.², and Michalopoulou H.²

¹ Hellenic National Meteorological Service

² National and Kapodistrian University of Athens, Faculty of Physics, Department of Environmental Physics- Meteorology

Abstract. Heavy convective rainfall incidents that occurred over western coastal Greece and led to flash floods are analyzed with respect to mesoscale analysis for the period from January 2006 to June 2011. The synoptic scale circulation is examined throughout the troposphere along with satellite images, lightning data and synoptic observations of weather stations. Well known instability indices are calculated and tested against synoptic observations. Taking into account the severity of the incidents, the performance of the indices was not as good as expected. Further detailed analysis resulted to the development of a new index that incorporates formalized experience of local weather and modeled knowledge of mechanism of severe thunderstorms. The proposed index named Local Instability Index (*LII*) is then evaluated and its performance is found to be quite satisfactory.

Keywords. thunderstorms, flash floods, western Greece, instability indices

1 Introduction

Thunderstorms accompanied by heavy rainfall often lead to flash flood events with disastrous consequences on the economy, the environment and in some cases have resulted in fatalities. Although the performance of the numerical weather prediction models have been improved (Kelley and Källén, 2013), it is always challenging to further study due to their impacts.

One of the fundamental conditions for a thunderstorm initiation is the existence of an unstable atmosphere. In order to estimate the instability, thermodynamic indices have been created by combining related meteorological parameters (Showalter, 1953; George, 1960; Boyden, 1963; Jefferson, 1963a; Jefferson, 1963b; Miller, 1967; Litynska et

Correspondence to: Marina Korologou
(marina.korologou@gmail.com)

al., 1976; Peppler, 1988; Peppler and Lamb, 1989; Jacovides and Yonetani, 1990; Reuter and Aktary, 1993; Tian and Fan, 2013). These indices have not shown always satisfactory results due to local effects that are not well represented or due to limited datasets.

Related studies have been carried out for specific regions of Greece with acceptable results (Dalezios and Papamanolis, 1991; Michalopoulou and Karadana, 1996; Sioutas and Flocas, 2003; Chrysoulakis et al., 2006; Marinaki et al., 2006). The main challenge of these studies was the availability and reliability of observation data as the existing radiosonde network is rather insufficient. It has been shown that the performance of the indices depends on the season or even month, the terrain of the area and the type of the thunderstorms (Michalopoulou and Jacovides, 1987; Prezerakos, 1989; Dalezios and Papamanolis, 1991; Haklander and Van Delden, 2003; Tyagi et al., 2011).

Western Peloponnese, being washed by the Ionian Sea, is an area that is frequently affected by severe thunderstorms (Maheras et al., 2003; Metaxas et al., 1999; Ziakopoulos, 2009; Xoplaki, 2002). However, relevant studies have not been performed so far, mainly due to the lack of radiosondes data. The objective of this study is to examine the thermodynamic environment of severe thunderstorms with respect to heavy rainfall occurring in this area for the period of 1-1-2006 to 30-6-2011. It is proposed an alternative methodological tool for developing a useful and practical index. This index is going to be used for forecasting these events without employing radiosondes data because they are not available for the most hydrological basins of magnitude 5 and above.

2 Data

The severe thunderstorms with heavy rainfall occurred in the examined area of northwestern Peloponnese (see Fig.1), more specifically over the hydrological basin defined by

the rivers Peiros, Parapeiros, Vergas and Pinios (almost $2500km^2$) (MEECC, 2012) during 1st of January 2006 to 30th of June 2011 were considered. For this purpose, a mesoscale analysis of the atmosphere with 6- hour time step for that period was performed. Datasets of dry and dew point temperature at the surface and geopotential height, temperature and humidity at the isobaric surfaces of 850, 700, 500, 300 hPa were used. The 6- hourly synoptic scale analysis of the atmosphere derived from the archive of Hellenic National Meteorological Service (HNMS) and a re-analysis of 0.125 deg resolution from the European Centre for Medium-Range Weather Forecasts (ECMWF) with the same time step were also employed (Veremei et al., 2013). Additionally, the surface synoptic observations (SYNOP) derived from the stations of Andravida, Araxos, Pyrgos and Zakynthos (see Fig.1) were employed and merged in 6- hour intervals in order to be compatible with the aforementioned time step (i.e. 00:00 - 6:00, 06:00 - 12:00, 12:00 to 18:00, 18:00 - 24:00).

Missing merged SYNOP were noticed randomly throughout the available dataset, mainly during night hours, weekends and public holidays, representing a percentage of 2.8%, 3.1%, 51.2%, 29.2% for the stations Andravida, Araxos, Pyrgos and Zakynthos respectively.

For the Dry Temperature, the missing data were classified in three categories. The first category is characterized by 6-hour intervals at Andravida station with no available observations from the nearby stations. This category is consisted of 9 cases. For this category, the Group Method of Data Handling (GMDH) algorithm (Acock, 2000) was employed with dependent variables:

- the Temperature at 850hPa at the time of the missing observation (T_{850_0})
- the 24 - hour trend of the T_{850} at the specific time related to the same time of the previous and the next day ($T_{850_0} - T_{850_{-24}}$ and $T_{850_{+24}} - T_{850_0}$)
- the Dry Temperature at the same time of the next (T_{+24}) and of the previous day (T_{-24})
- the 24 - trend of the next 6-hour Dry Temperature related to the corresponding hour of the next day ($T_{+30} - T_{+6}$)
- the 24 - trend of the previous 6-hour Dry Temperature related to the corresponding hour of the previous day ($T_{-6} - T_{-30}$)
- the 6 - hour Wind Runs at the same time, before 24 hours and after 24 hours.

The accuracy ($\pm 1^0 C$) was found to be as high as 88%.

The second category is consisted of 113 cases, being characterized by available observations at Araxos station at the referring times of the missing observations at Andravida.

In this case, the GMDH algorithm was also employed with one more dependent variable, namely the Dry Temperature of this nearby station. The accuracy ($\pm 1^0 C$) was found up to 90%.

The third category was characterized by two or more successive missing observations, consisting of 106 cases. In this case, the GMDH algorithm was not selected, but a qualitative approach was employed instead, with the aid of respective values from the nearby weather stations when available, the synoptic analysis and the satellite images from the satellite Meteosat-9 and more specifically a combination of the SEVIRI High Resolution Visible channel and the IR10.8 channel with the aid of the CineSat application.

For the surface relative humidity, the 228 missing merged observations were filled with the aid of a qualitative approach, due the nature of this parameter. The subjective estimation was based on succeeding and preceding observations, on observations of the nearby stations, on the synoptic analysis and on Meteosat-9 images (a combination of the SEVIRI IR3.9, IR10.8 and IR12.0 channels).

The amount of precipitation and the duration of each individual thunderstorm led to their intensity determination.

If a thunderstorm occurs within a 6- hour interval in at least one of the examined weather stations with intensity greater than 5 mm/min for at least 5 min then this interval is defined as 6- hour interval of severe thunderstorm.



Fig. 1. Map of Examined Area. The locations of the stations are displayed. The points A, B, C, D define the area of lightning data.

The lightnings data were available for the period 1-6-2008 to 30-6-2011 refer to an area defined by the points with coordinates $A(38.33^0 N, 20.60^0 E)$, $B(38.33^0 N, 21.90^0 E)$, $C(37.35^0 N, 21.90^0 E)$ and $D(37.35^0 N, 20.60^0 E)$ (Fig.1). Correspondingly, a 6- hour intervals being characterized by more than 10 strokes/ hour, were considered as intervals of severe thunderstorms. These records were merged with the synoptic observations. However there were cases with recorded strokes without recorded thunderstorms from the synoptic observations. The identification of these cases was further verified with the aid of satellite images (Meteosat-9) as derived from the channel combination named *Convection RGB*(WV6.2 - WV7.3, IR3.9 - IR10.8, NIR1.6 and the VIS0.6 channels).

This analysis showed 508 6-hour intervals with thunderstorm events over the examined area, including 143 intervals of severe thunderstorms associated with rainfall intensity greater than $5\text{mm}/\text{min}$ for at least 5 minutes duration or with $10\text{strokes}/\text{hour}$ according to aforementioned paragraphs. The specific events potentially lead to flash floods. The remaining 365 cases refer either to thunderstorms with no or relatively small amounts of precipitations or thunderstorms associated with frontal activity and were excluded from the subsequent analysis. The 143 severe cases occurred from May to October and thus our study became restricted to these.

Due to limited availability of lightnings data, two distinct sub-periods were used. The first period, from 1-5-2006 to 31-10-2007, that is characterized by lack of the lightnings data. The second one, from 1-6-2008 to 30-6-2011, is considered of higher reliability due to the availability of lightnings data. In the first one, 138 6-hour intervals of thunderstorms occurred, including 54 severe thunderstorms. In the second period 370 events of thunderstorms were observed, including 89 severe events.

A set of metadata were aggregated from the first period data i.e.

- Veering and backing of winds at surface, 850, 700, 500, 300 hPa
- Temperature and Humidity 6hrs, 12hrs and 24hrs trends at surface, 850, 700, 500, 300 hPa (i.e. ΔT_{6hrs} etc)
- Surface Pressure 6hrs, 12hrs and 24hrs trends
- Geopotential Heights trends at 850, 700, 500, 300 hPa
- Thickness for all combinations of the levels surface, 850, 700, 500, 300 hPa
- Components that constitute the Instability Indices KI, HI, TTI and SWEAT (i.e. $(T - Td)_{Levels}$ or $\sin(\text{wind direction}_{500hPa} - \text{wind direction}_{850hPa})$, etc)

3 Methodology

Available data made feasible the calculation of the thermodynamic instability indices KI, HI, TTI and SWEAT. Due to the fact that these indices refer to a specific geographical point, the Andravida surface weather station was chosen as representative of the examined area because this station presented the smallest number of missing data. Although these indices are satisfactory in many cases worldwide, for the examined area their performance, following the *HeVeS* (Hellenic Verification Scheme) (Petrou et al., 2009) and the *Yule Index* (Marinaki et al., 2006), was found to be poor (Dimetrova et al., 2009) and thus of no practical value. This performance could be attributed to the fact that the indices do not take into account the synoptic scale weather patterns nor

the local flows. Therefore the development of a new instability index is imperative.

Severe thunderstorms cannot be modeled and consequently predicted analytically nor synthetically (Holton, 2004). The proposed indices for predicting thunderstorms can be considered as a tested hypothesis. These tests were performed for a specific period. Consequently it is always possible for a proposed index to be rejected if applied or tested to a different period unsuccessfully. These validation tests are performed deductively; the proposed index (consisting actually the hypothesis) and its application constrains are considered as the prerequisite knowledge for prediction of the event; if the predicted event is not manifested, the hypothesis is rejected (Trochim, 2000). From a set of proposed indices, the index that is tested more strictly is preferred. It is rational to accept that if there is an effective index, it will be among those who have persisted in criticism and been corroborated.

An index is a successfully tested hypothesis that can be developed from experience, literature or theory, or combination of these (Graham et al., 2010) i.e. Combined Hypothesis Development. The index that derives from rich explicatory theoretical framework (content) and a consequently deductive hypothesis, incorporates formalized related experience and has performed successfully through strict validation tests, can be conceived that captures important part of the event behavior.

In order to state and support the effectiveness of the new index, it is suggested to use two different sets of data. The first for building the hypothesis i.e. to find the patterns and the rules that associate the events with the meteorological parameters for the specific period. The second for testing and evaluate the hypothesis according to *Modus Tollens* rule (Lakatos, 1963). It was preferred to use the first sub-period (1-5-2006 to 31-10-2007) for building the hypothesis and the second sub-period (1-6-2008 to 30-6-2011) for testing and evaluation since for the latter sub-period the recorded thunderstorms events are more accurate than the former as explained in the section 2 and the testing of the proposed index (hypothesis) would be more strict.

The factors responsible for forming the Index would be inferentially derived from the theoretical and empirical analysis. Data Mining and Optimization techniques are employed to determine the *critical values* of these factors and not the factors themselves, since this would led to an index with poor informative content i.e. relations between the event and parameters with no meteorological meaning.

In this study it was attempted to automatically extract associations rules and patterns between the events and the data and metadata using the software tools : MATLAB and ARMADA for MATLAB (ARMADA, 2011). Data Mining techniques such as Principal Components Analysis, Association Rules and Cluster Analysis were applied to data and metadata.

However, no useful result was found, mainly due to the sparseness of the phenomena in question. The aforementioned algorithms when applied to cases with rare phenomena modeled by high dimensional data with sparse features like in this case, they lose their effectiveness. To overcome this drawback requires a lot of effort to get results but not with the appropriate precision for this case (Beyer et al., 1999).

Thus, in this study, the described methodological tool of *Combined Hypothesis Development* was preferred to be used. The index will have the form of a threshold function that flags or not a warning for an impeded thunderstorm with heavy rainfall. The value of 100% for the recall of the index will be a major constrain due to the severity of the consequences of the event.

4 Developing the New Local Instability Index (LII)

In this section, the factors accounting for the framework of the index development are depicted and briefly presented along with a specific for the examined area synoptic description.

It is well known that a thunderstorm initiation requires the presence of three ingredients, namely, Energy, Moisture and Lifting Mechanism. Using these ingredients as a guidance, a detailed analysis for the factors that were related to thunderstorms events associated with heavy rainfall was conducted.

These mechanisms are closely related with the synoptic scale circulation over the examined area. More specifically, during the period from **May to August (5th to 8th)** polar air masses arrive over Mediterranean Sea and as they have crossed the warm continent of Europe, they have become dry and warm (Xoplaki, 2002). At the same time, the eastern Mediterranean region is affected by tropical dry and warm air masses (Rodwell and Hoskins, 2001; Hoskins, 1996). Thus, heat is transferred from the warm lower atmosphere layers to the upper layers of the sea, causing the temperature of the lower atmosphere to be reduced. These conditions enhance the stability of the atmosphere, often associated with temperature inversion and trapping moisture in the lower layers (from the surface to the 3000-5000 ft), inhibiting conditions of any cyclogenesis or depressions passes.

In late summer and especially during September the polar jet stream is shifted to the south. An atmospheric perturbation may interrupt the equatorial flow of the jet, a part of it usually moves southwards causing a northwesterly flow. Consequently, cyclonic conditions are created at the lee side of the Alps (Aebischer, 1998; Kljun et al., 2000) and the geodynamic heights are reduced. The Southeastern movement of that part of the jet is usually enhanced by the specific conditions. As the jet gets momentum, it moves further to the south, resulting in further reduction of the geopotential heights and cyclonic conditions over the area of Boot and northern Sidra Sea (Trigo et al., 2001). As a consequence,

southwesterly winds gradually prevail over southern Ionian Sea (Brody and Nestor, 1980) enriching even the middle layers of the atmosphere with moisture and reversing the temperature inversion which occurs at the low layers. The examined area is affected by such condition, as the southwestern stream in conjunction with local orography accumulates further moisture in the lower atmosphere, while in the meantime the perturbation has moved eastwards bringing cold and dry air mass in the upper layers. The combination of these conditions can be explosive and cause severe storms.

Throughout **September and October (9th to 10th)** and when a southwesterly flow prevails in the upper atmosphere, orographic clouds and precipitation are caused over the western Peloponnese windward areas. The shift of winds at 850 hPa to the southwestern sector favours the occurrence of thunderstorms, occasionally severe.

The factors of Energy, Moisture and Lifting are considered as the independent variables of a *threshold function* that constitute the *Local Instability Index (LII)* requiring a minimum value for the occurrence of severe thunderstorm.

The analysis was carried out every six hours and consequently the Index provides warning values every six hours lasting for the next 12 hours. Due to the severity of the phenomena, it is compulsory for the index to predict all or almost all the phenomena (recall 100%) and simultaneously maintain a high and practicable precision.

In order to determine the *critical values* of the parameters, the precision of *LII* was set up as the objective function which should be maximized. The required parameters were the changing variables of the objective function constrained to rational values. Constrain also was the value of recall, set up to 100% as was justified in the previous paragraph. For this purpose, the linear programming (LP)- based branch-and-bound algorithm of the optimization toolbox of MATLAB (R2010a), `bintprog` was used (Nemhauser and Wolsey, 1988).

4.1 Energy Term

Instability is a prerequisite for air mass thunderstorms and can be partially indicated by the Convective Available Potential Energy (CAPE) (Moncrieff and Miller, 1976). Although CAPE is referring to synoptic scale airmass, it has been shown that CAPE can be used for smaller scale, local weather diagnosis and prediction (Zverev, 1972). CAPE practically defines how strong the updraughts within the thunderstorm potentially are; stronger the updraughts result in heavier rainfalls (Wallace and Hobbs, 2006).

ACAPE Term

Using only the data that are available to operational forecasters in their daily duty, the Energy Term was developed in order to approximate the CAPE. An algorithm in MATLAB was built that accepts the Dry Temperatures (T) and the Dew

Point (Td) as inputs from the weather stations of Andravida, Araxos and Pyrgos and calculates a mean T and Td (Holton, 2004). The Lifted Condensation Level (LCL) was computed and simulating the wet adiabatic finally computed the Temperature (Tp) of the surface parcel would have if would be raised in the levels of 850, 700, 500 and 300 hPa. The Approximated CAPE (ACAPE) is the difference Tp-T and is referring to the four pressure levels (ACAPE₈₅₀, ACAPE₇₀₀, ACAPE₅₀₀ and ACAPE₃₀₀).

$$ACAPE_{Level} = Tp_{Level} - T_{Level} \quad (1)$$

It should be noted that there are a lot of cases of severe thunderstorms with low and sometimes negative CAPE (Curry and Webster, 1999).

Moreover, in the specific case, it can be stated that large amounts of negative ACAPE₈₅₀ is prohibitive for the development of thunderstorm with heavy rainfall (Peppler, 1988). This finding can be modeled by requiring ACAPE₈₅₀ ≥ -2.5. At the level of the 700 hPa, the positive energy (ACAPE₇₀₀ > 0) is a prerequisite, especially for the summer period where the geopotential heights are higher and more energy is needed for heavy rainfall to form within the thunderstorm (Bol, 2006). A threshold of 1.5 was noticed for the summer period (ACAPE₇₀₀ > 1.5). For the upper levels, the smaller values of ACAPE show that there is a smaller possibility for thunderstorm development. Thresholds of minus 2 and minus 8 were noted for the levels 500 and 300 hPa respectively. (ACAPE₅₀₀ > -2, ACAPE₃₀₀ > -8).

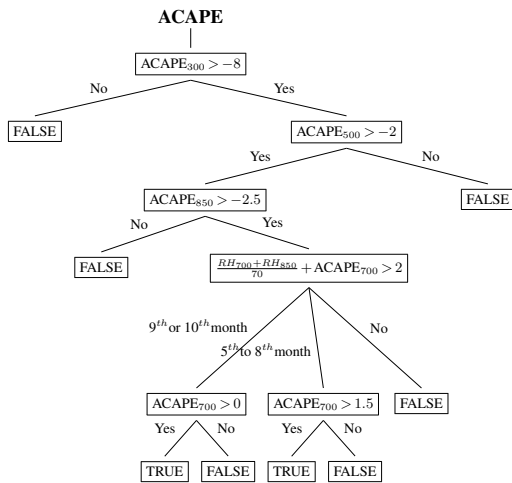


Fig. 2. Schematic diagram of ACAPE

Thickness Term

The thermal properties of the 850 to 500 hPa atmospheric layer are often better represented by the thickness rather than the temperature at a single level (Wallace and Hobbs, 2006). The 850 to 500 hPa thickness is a function of the

average temperature and the average moisture content of the air through the specific layer, which are two properties associated with the virtual temperature. Therefore, the specific thickness (between the level z_1 (with pressure p_1) and the level z_2 (with pressure p_2)) is associated with virtual temperature (T_v), as shown below:

$$z_2 - z_1 = -\frac{R_d \bar{T}_v}{g} * \ln\left(\frac{p_2}{p_1}\right) \quad (2)$$

The Virtual temperature is used for estimating the available convective potential energy and its exclusion may lead to relatively important errors (Doswell and Rasmussen, 1994).

$$CAPE = \int_{z_{EL}}^{z_{LFC}} g * \left(\frac{T_{v,parcel} - T_{v,env}}{T_{v,env}} \right) dz \quad (3)$$

where z_{LFC} and z_{EL} are the heights of the levels of free convection and equilibrium respectively, $T_{v,parcel}$ is the virtual temperature of the specific parcel, $T_{v,env}$ is the virtual temperature of the environment, and g is the acceleration due to gravity.

Consequently, the 850 to 500 hPa thickness effect on CAPE led us to include this indicator in the LII formation. For practical reasons, the thickness seasonality was subtracted using the moving average. It has been demonstrated that should be less than 0 for the period from May to August and less than 40 for September and October. The ACAPE and the Thickness Term are represented schematically in the Fig.2 and Fig.3.

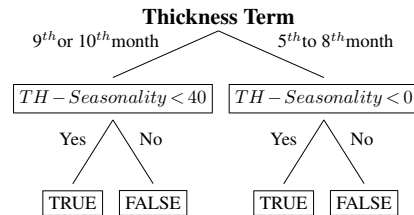


Fig. 3. Schematic diagram of the Thickness Term

Thus, the **Energy Term (ET)** is the conjunction of ACAPE and Thickness Term, i.e.

$$ET := ACAPE \wedge \text{Thickness Term.} \quad (4)$$

4.2 Moisture Term

According to previous studies (Humphreys, 1926; Showalter and Fulks, 1943; Fawbush et al., 1951; Appleby, 1954; Whitney and Miller, 1956; Miller, 1967; Schaefer, 1986) the low level moisture is a prerequisite for the thunderstorm initiation and development. Usually, low level moisture increases instability as more latent heat is available to the lower atmosphere. In the opposite, when mid-level moisture increases,

the atmospheric instability can decrease because moist air is less dense and therefore less able to evaporate precipitation than the drier air. The evaporation of precipitation at or beneath cloud level causes the air-cooling inside precipitation downdrafts, making the air denser and increases instability although that the amount of precipitation is usually small.

The minimum amount of moisture that was noticed in the recorded events, expressed in relative humidity term, was 60% at 850 hPA and 40% at 700 hPA and 120% for their sum (see Fig. 4). The aforementioned thresholds are insufficient for heavy rainfall. Although, increasing moisture increases the potentiality for heavy rainfall within the thunderstorm, the moisture in the upper levels may decrease the instability (Bol, 2006) and is not taken into account although it was found that the values of the upper levels were associated with the thunderstorms.

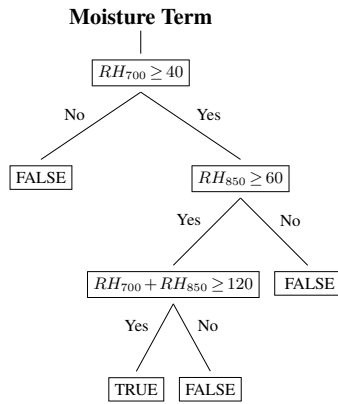


Fig. 4. Schematic diagram of the Moisture Term

4.3 Terrain Heating Effect and Local Features

A lifting force is necessary for a rising parcel of air to overcome the convective inhibition which occurs when a layer of warmer air is above a particular region of air, resulting in the cooler air parcel to be hindered from ascending into the atmosphere (Mapes, 2000). Thus, a temperature inversion is created and therefore a stable region of air. The lift mechanism pushes the cooler parcel of air over the inversion contributing to the thunderstorm development. The main sources of a lift mechanism are associated with terrain features, heating and sea breeze.

Terrain Heating Effect Term

A cold air mass with respect to the ground can be heated from it, increasing its instability and vice versa. If an air mass is cooling from the terrain is becoming denser and unfavorable for thunderstorm development (Kessler, 1983). Taking into account the terrain thermal conductivity with respect to heat storage (terrain heat capacity) the terrain heating effect

is suggested to be modeled as :

$$TH = T_0 - \frac{2T_{-1} + T_{-2}}{3} \tag{5}$$

where T_0, T_{-1}, T_{-2} are the temperature of the terrain on the specific day, 1 day and 2 days before respectively at the same time. The weight factor for the previous day temperature is set to 2 and for the temperature of 2 days before is set to 1. They are decreasing as the effect decreases with time.

The threshold was estimated to $TH = 2$ since greater values mean reduced instability. In the cases, where the current is southwesterly, and is consequently supplying to the area, the factor TH became more ineffective moisture and this can be modeled by subtracting three degrees.

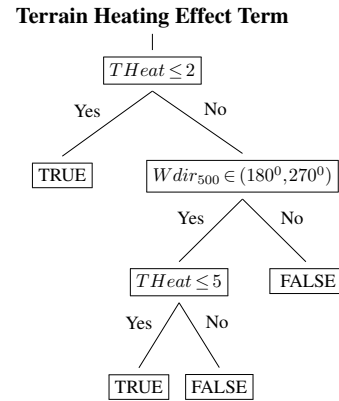


Fig. 5. Schematic diagram of the Terrain Heating Effect Term

4.35 Locality Term

Apart from the local influences that were modeled within the aforementioned terms, it can be introduced that the dissolving effect of the easterly downdraft current due to the high mountains on the Eastern parts of the area examined.

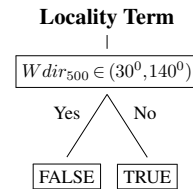


Fig. 6. Schematic diagram of the Locality Term

4.4 The Local Instability Index (LII)

Summarizing the above terms, the *LII* can be considered as the conjunction of the *ET* (Energy Term), *MT* (Moisture Term), *THET* (Terrain Heating Effect Term) and *LT* (Locality Term) :

$$LII := ET \wedge MT \wedge THET \wedge LT \tag{6}$$

5 Calculations, Evaluation and Discussion

The *LII* was calculated on the basis of the data of the period 1-5-2006 to 31-10-2007. 88 severe thunderstorms events were predicted. It is important to note that the actual number was 54 and all of them were predicted. Although the importance of 100% recall is controversial, the risk of neglecting a severe thunderstorm warning may prove hazardous, since injuries or fatalities and damages to structures or to the environment may not be prevented. The *LII* predicted 1418 no thunderstorm events and the actual number was 1452.

The Consistency Table of *LII* for the specific period is shown in the Table 1 and its performance is described as follows:

- Precision = (the number of the thunderstorms that occurred from those that had been forecasted/ the number of the latter) = 61%
- Recall = (the number of the thunderstorms that forecasted from those that had been occurred/ the number of the latter) = 100%
- Fall-out = (the number of the cases with no thunderstorms from those that had not been forecasted/ the number of the latter) = 98%

Table 1. LII - Consistency Table for the period 1-5-2006 to 31-10-2007

	Observation	
LII	54 (<i>Correct result</i>)	34 (<i>Unexpected Result</i>)
	0 (<i>Missing result</i>)	1418 (<i>Correct absent of result</i>)

The weighted harmonic mean of precision and recall, the traditional F-measure or balanced F-score is:

$$F = 2 * \frac{Precision * Recall}{Precision + Recall} \tag{7}$$

resulting in $F = 76\%$ and the most adequate measure for the case of severe phenomena the $F_{1,2}$ that weights recall as 1,2 times much as precision is:

$$F_{1,2} = (1 + 1.2^2) * \frac{Precision * Recall}{1.2^2 * Precision + Recall} \tag{8}$$

resulting in $F_{1,2} = 79\%$ (total performance)

The *LII* was then calculated for the second period 1-6-2008 to 30-6-2011. 163 severe thunderstorms were predicted. During this period the actual number was 89 and *LII* predicted all of them. The *LII* predicted 2165 no thunderstorm events and the actual number was 2239. The Consistency Table of the *LII* for the specific period is shown in the Table 2 and its performance is: Precision = 55%, Recall = 100%, Fall- out = 97% The balanced F-score is:

$F = 71\%$ and the weighted F-score i.e. the total performance is: $F_{1,2} = 75\%$

Table 2. LII - Consistency Table for the period 1-6-2008 to 30-6-2011

	Observation	
<i>LII</i>	89 (<i>Correct result</i>)	74 (<i>Unexpected Result</i>)
	0 (<i>Missing result</i>)	2165 (<i>Correct absent of result</i>)

The performance of *LII* per month is illustrated in Table 3.

Table 3. LII - Monthly Performance for the period 1-6-2008 to 30-6-2011

	<i>LII</i>	Actual	Precision	Recall	F	$F_{1,2}$
May	17	6	0.35	1.00	0.52	0.57
June	23	7	0.30	1.00	0.47	0.52
july	10	1	0,10	1.00	0.18	0.21
August	11	1	0.09	1.00	0.17	0.20
September	51	34	0.67	1.00	0.80	0.83
October	51	40	0.78	1.00	0.88	0.90

It is demonstrated that the *LII* had performed very well for the months May, June, September and October, when unstable weather conditions are more likely to occur. In these cases, most of the thunderstorm events took place during noon or afternoon when the terrain heating effect is stronger. The lower levels of the atmosphere were moist enough and the CAPE was suitable. During July and August of the specific period, only two thunderstorm with heavy rainfall events occurred. This was expected as the atmosphere in the region is generally stable for these months, as was previously explained. Although the performance of *LII* for July and August is rather low, its use is still beneficial, taking into account the severity of the events and that the *recall* of the *LII* is 100%.

6 Conclusions

This study presents an alternative methodological tool for the prediction of severe thunderstorms occurring over a specific area. The northwestern Peloponnese was chosen to illustrate the proposed tool because many thunderstorms with heavy rainfall have occurred with disastrous impacts.

The parameters used were constrained to those that are easily available to operational forecasters while performing their everyday duties. The statistical correlations of the parameters with the observations were examined. In the cases that the correlations were not justified by the relative theory, the respective parameters were neglected. Then, the Lo-

cal Instability Index (*LII*) was inferentially drawn by using them. The *LII* is a threshold function that consists of the low level moisture, a practical approximation of the CAPE, the terrain heating effect and a formalized operational experience. It was found that the *LII* has satisfactory total performance (75%) over northwestern Peloponnese region for the period from 1-6-2008 to 30-6-2011 and predicted all the thunderstorms with heavy rainfall events (*recall* = 100%).

The future challenge for further development and optimization of this tool is to experiment the *LII* for a longer period and for hydrological basins all around Greece since in case of good performance, the *LII* would be at the disposal of operational forecasters of HNMC.

Acknowledgements. We would like to thank the HNMC operational forecasters for their help

References

- Acock M. C., Pachepsky Ya. A.: Estimating Missing Weather Data for Agricultural Simulations Using Group Method of Data Handling, *Journal of Applied Meteorology and Climatology*: Vol. 39, No. 7, pp. 1176-1184, 2000.
- Aebischer, U. and Schär, C.: Low-Level Potential Vorticity and Cyclogenesis to the Lee of the Alps, *Journal of Atmospheric Sciences*, 55, 1862-1877 doi: [http://dx.doi.org/10.1175/1520-0469\(1998\)055<1862:LLPVAC>2.0.CO;2](http://dx.doi.org/10.1175/1520-0469(1998)055<1862:LLPVAC>2.0.CO;2), 1998.
- Appleby, J. F.: Trajectory method of making short-range forecasts of differential temperature advection, instability, and moisture, *Monthly Weather Review*, 82, 3203-3214, 1954.
- ARMADA Data Mining Tool version 1.4 Available at: <http://www.mathworks.com/matlabcentral/fileexchange/3016-armada-data-mining-tool-version-1-4> (Updated 18 Feb 2011) (Accessed: 15 May 2014).
- Beyer, K., Goldstein, J., Ramakrishnan, R. and Shaft, U.: When Is "Nearest Neighbor" Meaningful?, In *Int. Conf. on Database Theory*, pp. 217-235, 1999.
- Brody, L. R., Nestor, M.J.R.: *Regional Forecasting Aids for the Mediterranean Basin. Handbook for Forecasters in the Mediterranean*, Naval Research Laboratory. Part 2, 1980.
- Bol, A.: Buoyancy and CAPE, *Principles of Convection*, University Corporation for Atmospheric Research. <http://meted.ucar.edu/mesoprime/cape/print.htm>. Retrieved August 26, 2012, 2006.
- Boyden, C.J.: A Simple Instability Index for Use as a synoptic parameter, *Met. Mag.*, pp. 198-210, 1963.
- Branick, M., A Comprehensive Glossary of Weather Terms for Storm Spotters, NWS Norman, OK
- Chrysoulakis, N., Spiliotopoulos, M., Domenikiotis, C., and Dalezios, N. R.: Towards Monitoring of Regional Atmospheric Instability Through MODIS/AQUA Images, *International Symposium GIS and Remote Sensing: Environmental Applications*, Volos, 7-9 November 2003, pp.155-166, 2006.
- Curry, J.A., and Webster, P.J.: *Thermodynamics of Atmospheres and Oceans*, Vol. 65 (International Geophysics), Academic Press, 1999.
- Dalezios, N. R. and Papamanolis, N. K.: Objective assessment of instability indices for operational hail forecasting in Greece, *Meteorology and Atmospheric Physics*, 45, 871-900, 1991.
- Dimitrova, T., Mitzevab, R., Savtchenko, A.: Environmental conditions responsible for the type of precipitation in summer convective storms over Bulgaria, *Atmospheric Research*, Vol. 93, Issues 13, Pages 3038, 2009.
- Doswell, C.A.III, and Rasmussen, E.N.: The effect of neglecting the Virtual Temperature Correction on CAPE Calculations, *Weather and Forecasting*, Vol. 9, issue 4, pp. 625-629, 1994.
- George, J.J.: Weather Forecasting for Aeronautics, *Quarterly Journal of the Royal Meteorological Society*, Vol. 87, Issue 371, page 120, DOI: 10.1002/qj.49708737120, 1960
- Fawbush, E. J., Miller, R. C., and Starrett, L. G.: An empirical method for forecasting tornado development, *Bulletin of the American Meteorological Society*, 32, 19, 1951.
- Graham I., Ronald Shaw R., Dixon D., Paul Jones III J.: *Theorizing Our World In Research Methods in Geography*. Edited by Gomez B. and Paul Jones III J. Blackwell Publishing Ltd 2010
- Haklander, A. J. and Van Delden, A.: Thunderstorm predictors and their forecast skill for the Netherlands, *Atmos. Res.*, 6768, 273299, 2003.
- Holton, J. R.: *An Introduction to Dynamic Meteorology*, Academic Press, 4th Edition, 2004.
- Hoskins, B.J.: On the existence and strength of the summer subtropical anticyclones - Bernhard Haurwitz memorial lecture, *Bulletin of the American Meteorological Society*, 1996, Vol:77, Pages:1287-1292 DOI: 0003-0007, 1996
- Humphreys, W. J.: The tornado, *Monthly Weather Review*, 54, 501-503, 1926.
- Jacovides, C. P. and Yonetani, T.: An evaluation of stability indices for thunderstorm prediction in Greater Cyprus, *Weather Forecast*, 5, 559-569, 1990.
- Jefferson, G. J.: A modified instability index, *Meteorological Magazine*, 92, 929-936, 1963a.
- Jefferson, G. J.: A further development of the instability index, *Meteorological Magazine*, 92, 313-316, 1963b.
- Keeley, S., and Källén, E.: Operational and research activities at ECMWF now and in the future, ECMWF, 2013. Available at: old.ecmwf.int/newsevents/training/meteorological_presentations/2013/PR2013/Keeley/ECMWF-Past-FuturePR_final.pdf (Accessed: 15 May 2014)
- Kessler, E.: *Thunderstorm Morphology and Dynamics*, University of Oklahoma Press, 1983.
- Kljun, N., Sprenger, M., Schär, C.: Frontal modification and lee cyclogenesis in the Alps: A case study using the ALPEX reanalysis data set, *Meteorology and Atmospheric Physics*, Vol. 78, Issue 1-2, pp 89-105, DOI: 10.1007/s007030170008, 2000
- Lakatos, I.: Proofs and Refutations, *British Journal for the Philosophy of Science*, 1963-64
- Litynska, Z., Parfiniewicz, J., and Pinkowski, H.: The prediction of air mass thunderstorms and hails, *W.M.O.*, No. 450, 128-130, 1976.
- Maheras, P., Anagnostopoulou, C., Circulation Types and their Influence on the Interannual variability and precipitation changes in Greece. *Mediterranean Climate-Variability and Trends*. Springer Verlag, Berlin, Heidelberg, 215-239 pp, 2003.
- Marinaki, A., Spiliotopoulos, M., and Michalopoulou, H.: Evaluation of atmospheric instability indices in Greece, *Advances in*

- Geosciences, 7, 131135, 2006.
- 615 Mapes, B.E.: Convective Inhibition, Subgrid-Scale Triggering Energy, and Stratiform Instability in a Toy Tropical Wave Mode, 675 *Journal of Atmospheric Sciences*, 57, 1515-1535, 2000.
- Ministry of Environment, Energy and Climate Change: Synoptic Description of the Hydrological Basin of Northern Peloponnese. Available at: http://wfd.opengov.gr/index.php?option=com_content&task=view&id=25&Itemid=12 (Accessed: 680 15 June 2012).
- Metaxas, D. A., Philandras, C. M., Nastos, P. T., and Repapis, C. C.: Variability of precipitation pattern in Greece during the year, 625 *Fresen Environ. Bull.*, 8, 16, 1999.
- Michalopoulou, H. and Jacovides, C. P.: Instability indices for the 685 Cyprus area, *Meteorology and Atmospheric Physics*, 37, 153157, 1987.
- Michalopoulou, H. and Karadana, E.: A review of instability indices for the greater area of Athens, 3rd Hellenic Conference on Meteorology and Atmospheric Physics, 193198, 1996. (in 690 Greek)
- Miller, R.C.: Notes on the analysis and severe storm forecasting procedures of the Military Weather Warning Center, Tech. Report 200, AWS, USAF. [Headquarters, AWS, Scott AFB, IL 62225], 1967. 695
- Moncrieff, M.W. and Miller, M.J.: The dynamics and simulation of tropical cumulonimbus and squall lines, *Quarterly Journal of the Royal Meteorological Society* 120: 37394, 1976.
- 640 Nemhauser, G.L., and Wolsey, L.A.: Integer and Combinatorial Optimization, John Wiley & Sons, 1988.
- Peppler, P.A.: A Review of Static Stability Indices and related Thermodynamic Parameters, Illinois State Water Survey Division, Climate and Meteorology Section, SWS Miscellaneous Publication 104, 1988. 645
- Peppler, R. A., and Lamb, P. J.: Tropospheric static stability and central North American growing season rainfall, *Monthly Weather Review*, 117, 11561180, 1989.
- Petrou, C., Mavroudakos, T., Giannopoulos, P.: Verification of Extreme Weather Phenomena in HELLAS, The European Forecaster Newsletter of WGCEF, Vol 14, p22-23, 2009.
- Prezerakos, N.G.: An investigation into the conditions in which air-mass thunderstorms occur at Athens, *Meteorological Magazine*, 118 (1399), 3136, 1989.
- 655 Reuter, G. W. and Aktary, N.: A slantwise Showalter index based on moist symmetric instability: Results for Central Alberta, *Atmosphere-Ocean*, 31, 379394, 1993.
- Rodwell, M.J. and Hoskins, B.J.: Subtropical Anticyclones and Summer Monsoons, *JOURNAL OF CLIMATE*, Vol:14, Pages: 3192-3211, 2001 660
- Schaefer, J. T.: Severe thunderstorm forecasting: A historical perspective, *Wea. Forecasting*, 1, 164189, 1986.
- Showalter, A. K. and Fulks, J. R.: Preliminary report on tornadoes, U.S. Dept. of Commerce, Weather Bureau, No.806, 162 pp,1943.
- 665 Showalter, A.K.: A Stability Index for Thunderstorms Forecasting, *Bulletin of the American Meteorological Society*, vol. 34, pp. 250-252, 1953.
- Sioutas, M. V., and Flocas, H. A.: Hailstorms in Northern Greece: synoptic patterns and thermodynamic environment, *Theoretical and Applied Climatology*, 75, 189202, 2003. 670
- Tian, B. and Fan, K. : Factors favorable to frequent extreme precipitation in the upper Yangtze River Valley, *Meteorology and Atmospheric Physics*, 121(3-4):189-197, 2013.
- Trigo, I.F., Bigg, G.R. and Davies, T.D.: Climatology of Cyclogenesis Mechanisms in the Mediterranean, *Monthly Weather Review*, 130, 549-569, 2001.
- Trochim, W. : The Research Methods Knowledge Base, 2nd Edition. Atomic Dog Publishing, Cincinnati, OH (2000).
- Tyagi, B., Krishna, V. N., and Satyanarayana, A. N. V.: Study of thermodynamic indices in forecasting pre-monsoon thunderstorms over Kolkata during STORM pilot phase 20062008, *Nat. Hazards*, 56, 681698, 2011.
- Veremei, N. E., Dovgalyuk, Yu. A., Efimov, S. V., Nosova, A. M., Pechenkin, A. A.: Studying the showers and thunderstorms on the territory of Russia using the numerical model of convective cloud and the reanalysis data, *Russian Meteorology and Hydrology*, Vol. 38, Pages 20-27, 2013.
- Wallace, J.M., and Hobbs, P.V.: *Atmospheric Science*, Second Edition, Academic Press, 2006.
- Whitney, L. F., Jr., and Miller, J. E.: Destabilization by differential advection in the tornado situation 8 June 1953, *Bulletin of the American Meteorological Society*, 37, 224229, 1956.
- Xoplaki, E.: Climate variability over the Mediterranean, Inauguraldissertation der Philosophisch- naturwissenschaftlichen Fakultät der Universität Bern, 2002.
- Ziakopoulos, D.: Weather, The son of the earth and the sun (Forecast), *Artio stamp epe*, 2009.(in Greek)
- Zverev, A.S.: *Practical Work in Synoptic Meteorology*, Hydrometeorological Publishing House; 1ST edition (1972).