



This discussion paper is/has been under review for the journal Natural Hazards and Earth System Sciences (NHESD). Please refer to the corresponding final paper in NHESD if available.

Brief Communication: **The effect of submerged vents on probabilistic hazard assessment for tephra fallout**

R. Tonini¹, L. Sandri², A. Costa², and J. Selva²

¹Istituto Nazionale di Geofisica e Vulcanologia, Sezione di Roma 1, Roma, Italy

²Istituto Nazionale di Geofisica e Vulcanologia, Sezione di Bologna, Bologna, Italy

Received: 1 August 2014 – Accepted: 7 November 2014 – Published: 28 November 2014

Correspondence to: R. Tonini (roberto.tonini@ingv.it)

Published by Copernicus Publications on behalf of the European Geosciences Union.

NHESD

2, 7181–7196, 2014

**The effect of
submerged vents on
PVHA for tephra
fallout**

R. Tonini et al.

Title Page

Abstract

Introduction

Conclusions

References

Tables

Figures



Back

Close

Full Screen / Esc

Printer-friendly Version

Interactive Discussion



Abstract

Many volcanic systems are partially or entirely submerged, implying that vents may open underwater. The effect of submerged vents on probabilistic volcanic hazard assessment (PVHA) for tephra fallout has always been neglected, introducing potentially uncontrolled biases. We present a strategy to quantify the effect of submerged vents on PVHA for tephra fallout, based on a simplified empirical model where the efficiency of tephra production decreases as a function of the water depth above the eruptive vent. The method is then applied to Campi Flegrei caldera, comparing its results to those of two reference end-member models and their statistical mixing.

1 Introduction

Several very hazardous volcanic systems are located very close to seas, oceans or lakes worldwide and their vents can be partially submerged by water. As a consequence, the vent of possible future eruptions for such volcanoes could be both inland or offshore, inferring the need of considering the possible different eruptive behavior of the submerged opening vents with respect to the subaerial ones. Notorious examples of high risk volcanoes with potentially submerged vents are, among the many others, the Auckland Volcanic Field (New Zealand), Rabaul caldera (Papua New Guinea), Santorini (Greece), and the Campi Flegrei caldera (CFc, Italy).

The high risk associated with volcanic activity at some of these partly submerged volcanoes motivated many efforts to estimate the hazard posed on the surrounding high-density populated areas, for different possible hazardous volcanic outcomes (e.g. Sandri et al., 2012, at the Auckland Volcanic field). Several hazardous phenomena are associated with eruptions in shallow waters, however, in the present communication, the focus is on tephra fallout hazard which can impact very large areas far from the vent.

NHESSD

2, 7181–7196, 2014

The effect of submerged vents on PVHA for tephra fallout

R. Tonini et al.

Title Page

Abstract

Introduction

Conclusions

References

Tables

Figures



Back

Close

Full Screen / Esc

Printer-friendly Version

Interactive Discussion



model for tephra fallout hazard assessment at many partially submerged volcanoes partially account for both the effects.

In order to evaluate such sensitivity, in practice we apply the proposed models to CFc, a caldera system which is approximately half submerged, being formed by two nested calderas originated by two major collapses, the first related to the Campanian Ignimbrite eruption, occurred about 39 ka ago (e.g. Costa et al., 2012), and the Neapolitan Yellow Tuff eruption, occurred about 15 ka ago (e.g. Orsi et al., 1992). In the last 15 ka, CFc volcanic activity has been very intense producing about 50 eruptions (Smith et al., 2011), the last (forming Monte Nuovo tuff-cone) occurring in AD 1538 (Guidoboni and Ciuccarelli, 2011). Recently, the centre of CFc has been affected by a few major bradyseismic events, the latter two respectively in the early seventies and eighties, that generated almost 2 m of maximum ground deformation each (Orsi et al., 1999). Recent compositional anomalies of fumaroles together with major and minor bradyseismic events might suggest a new volcanic unrest at CFc (Chiodini et al., 2012).

Our PVHAs are based on the Bayesian Event Tree for Volcanic Hazard (BET_VH, see Marzocchi et al., 2010). Like in Selva et al. (2010), we use a finite number of eruptive scenarios to represent the full variability of the next possible eruption, by defining the possible vent locations (seven hundreds, Selva et al., 2012a) and a range of expected eruptive styles/sizes (dome-forming effusive, small, medium and large explosive eruptions) for CFc (Orsi et al., 2009; Costa et al., 2009). By means of BET_VH, we properly weight each eruptive scenario with its own probability of occurrence. As in Selva et al. (2010), tephra dispersal for each eruptive scenario is described using the simulation results by Costa et al. (2009) obtained applying the analytical tephra deposition model HAZMAP (Macedonio et al., 2005), for all the potential vent locations and explosive eruptive styles/sizes, and considering a statistically significant set of wind profiles. Compared to Selva et al. (2010), here we also consider the probability of eruption occurrence at CFc in 50 years as inferred in Selva et al. (2012a), obtaining the unconditioned PVHA for tephra fallout.

The effect of submerged vents on PVHA for tephra fallout

R. Tonini et al.

Title Page

Abstract

Introduction

Conclusions

References

Tables

Figures

◀

▶

◀

▶

Back

Close

Full Screen / Esc

Printer-friendly Version

Interactive Discussion



The effect of submerged vents on PVHA for tephra fallout

R. Tonini et al.

Title Page

Abstract

Introduction

Conclusions

References

Tables

Figures



Back

Close

Full Screen / Esc

Printer-friendly Version

Interactive Discussion



As we mentioned above, for the sake of simplicity, here we neglect the possible enhancement in explosivity due to magma–water interaction (e.g. Sheridan and Wohletz, 1983). However, we remark that the large proportion of fine tephra observed in CFC eruptive products (due to magma–water interaction) is indeed considered in the total grain size distribution that we input in HAZMAP simulations at CFC (Costa et al., 2009).

The final results of each PVHA are presented as Bayesian Probability Maps, showing the probability of exceeding a threshold of 3 kPa of tephra load in the target domain and within a time window of 50 years. We then check the sensitivity of the effect of water in the case of CFC by comparing the PVHA resulting from the presented model with the reference PVHAs and with their statistical mixing.

2 Water depth and subaerial tephra production: modelling approaches

In this section we describe how the effect of the sea has been quantitatively taken into account. In order to distinguish a possible different behavior between inland and submarine eruptions, we introduce a variability of the probability in subaerial tephra production as a function of the vent position. In other words, the probability of tephra production at node 6 (see Fig. 1, upper panel) of BET_VH (Marzocchi et al., 2010) depends on the water depth above the submerged vent. In particular, we define four different hypotheses (namely H1, H2, H3 and H4): the first two (H1 and H2) represent the end-member models, H3 is the statistical mixing of H1 and H2, and H4 introduces the inhibiting effect of the overlaying water for offshore vents by using some empirical considerations (Mastin and Witter, 2000).

H1 In this case we do not take into account the presence of water above the offshore vents; in other words, we rely on the assumption that both inland and offshore vents have the same capability to produce subaerial tephra. In general, this corresponds to set a uniform best guess probability at node 6 ($P_{N6} = P_0$) for all the vents. This is the same assumption adopted, for example, by Selva et al. (2010)

for CFc and is the most common approach applied in tephra fallout hazard assessment up to now.

H2 In this case we assume that if waters are deeper than 10 m, the production of subaerial tephra is totally suppressed. The cut-depth of 10 m is here assumed as a possible order-of-magnitude size of uplift precursor to explosive eruptions (e.g. Guidoboni and Ciuccarelli, 2011), and also a typical size of cones that form in the first phases of eruptions. In other words, if the vent is at such depth or shallower, in a short time before (in case of precursor uplift) or after (due to cone formation) the eruption onset, the activity will turn into subaerial, and the overall effect of water on subaerial tephra production will be negligible (neglecting the effects of an increase in explosivity due to magma–water interaction discussed above). Following this assumption, this hypothesis considers two typologies of eruptive vents only:

- a. inland or in shallow water (i.e. water shallower than 10 m) having a maximum capability of producing subaerial tephra ($P_{N6} = P_0$);
- b. offshore deep water (i.e. water deeper than 10 m) having a totally null capability of producing subaerial tephra ($P_{N6} = 0$).

H3 This hypothesis consists into assuming that the hazard can be modeled by a statistical mixing of the two opposite end-members described in H1 and H2 hypotheses. In this view, the results obtained from H1 and H2 are statistically combined into H3 by representing the latter with a sample composed by the union of two randomly sampled subsets of values (one subset from H1 and one from H2). The relative numerosity of the two subsets is a proxy of the relative weight assigned to H1 and H2, and might be assigned according to the credibility of the two hypotheses for the considered volcano: for example, depending on the knowledge of the local bathymetry, if the sea is very shallow throughout the submerged part, one might want to assign a higher weight to H1, and viceversa.

The effect of submerged vents on PVHA for tephra fallout

R. Tonini et al.

Title Page

Abstract

Introduction

Conclusions

References

Tables

Figures



Back

Close

Full Screen / Esc

Printer-friendly Version

Interactive Discussion



by Selva et al. (2012b), obtaining a best guess probability for an eruption at CFC in 50 years of about 40 %;

- Nodes 4 and 5 represent the conditional probability to experience a specific eruptive scenario, that is, an eruption from a given vent position (Node 4) and of a given size (Node 5). For the spatial probability distribution (Node 4) of vent opening we rely on results by Selva et al. (2012a) and shown in Fig. 1 (bottom panel). For the probability of eruptive sizes (Node 5), as in Orsi et al. (2009) we consider four different size classes based on the geological history of CFC (Costa et al., 2009; Orsi et al., 2009): (i) a lava dome eruption (not producing tephra fallout), (ii) a small explosive size similar to Averno 2 eruption, (iii) a medium explosive size similar to Astroni 6 eruption, and (iv) a large explosive size similar to Agnano Monte Spina eruption (Costa et al., 2009).
- Nodes 6 to 8 represent the impact due to a specific eruptive scenario. At Node 6 we assess the probability of tephra production given an eruption of a given size from a given vent. Such probability is parameterized according to different possible hypothesis, as explained in the above Sect. 2. In particular, we assume $P_0 = 1$ for all the explosive sizes and $P_0 = 0$ for the lava dome eruptions. Nodes 7 and 8 represent the conditional probability (given a specific eruptive scenario) that tephra covers different points (Node 7) in the target domain and overcomes a given intensity of tephra load (Node 8), here set at 3 kPa as a representative threshold for potential roof damage (e.g. Macedonio et al., 2005). For each explosive size, such conditional probabilities are estimated as in Selva et al. (2010), using 1000 HAZMAP simulations of tephra deposits randomly sampled from the 13 149 ones performed by Costa et al. (2009). The HAZMAP input parameters of the three reference explosive eruptive sizes are the same listed in Table 3 in Selva et al. (2010).

The effect of submerged vents on PVHA for tephra fallout

R. Tonini et al.

Title Page

Abstract

Introduction

Conclusions

References

Tables

Figures



Back

Close

Full Screen / Esc

Printer-friendly Version

Interactive Discussion



4 Results and discussion

By modelling with BET_VH the water effect at CFc under the four different hypothesis H1, H2, H3 and H4, we obtain four different PVHAs for the target region, respectively labelled in the following as CF1, CF2, CF3 and CF4. CF3 is the statistical mixing of CF1 and CF2, giving equal weight to the two, as we have no evidence that one of the two hypotheses H1 and H2 could be more reliable than the other. In Fig. 2 we report the results for the four PVHAs, displayed as maps showing the best guess (mean) probability of experiencing a tephra load larger than 3 kPa in 50 years. We also report, for each of these maps, the 10-th and 90-th percentile maps, in order to provide an idea of the epistemic uncertainty associated to the best guess maps.

As mentioned above, for CF4 we set $D_{\max} = 300$ m. However, in order to check the effect of this assumption we used different values for D_{\max} (from 200 to 400 m). Results using such different values show no significant changes in CF4 results; the same applies if we consider increasing values of D_{\max} as the size increases (200, 300 and 400 m for respectively small, medium and large explosive eruptions). However this insensitivity to D_{\max} might be due to the shallow bathymetry in the Gulf of Pozzuoli, where maximum water depth is about 150 m, and it could not be generalizable to volcanic areas characterized by deeper bathymetry.

The overall feature resulting from a comparison of the four PVHAs is that the maximum of difference is to the SouthEast of the submerged part of the caldera. This is due to a combination of factors very peculiar to CFc: the submerged part of the caldera has a much lower probability of vent opening (Selva et al., 2010), compared to the sub-aerial part (see Fig. 1), and the prevalent winds' direction is towards SE (Costa et al., 2009), away from the coastline. This implies that the influence of the sea on the tephra fallout hazard posed by CFc eruptions is mostly relevant offshore, while on land may be relevant only within the caldera and in the western part of the municipality of Naples. This can be better visualized in Fig. 3, where the relative differences in terms of PVHA are highlighted by showing residual probability between CF1 and CF2, CF1 and CF3,

NHESSD

2, 7181–7196, 2014

The effect of submerged vents on PVHA for tephra fallout

R. Tonini et al.

Title Page

Abstract

Introduction

Conclusions

References

Tables

Figures



Back

Close

Full Screen / Esc

Printer-friendly Version

Interactive Discussion



and CF1 and CF4 respectively, all divided by CF1 (which is by definition the model implying the largest hazard). More specifically, the maximum relative differences are offshore, and respectively around 50, 30 and 15 %, while inland they are about 30, 20 and 8 %. Such differences are all well captured by our estimate of the epistemic uncertainty in the most commonly used reference model CF1. However, this may be different at other volcanic systems (Bebbington and Cronin, 2010; Sandri et al., 2012). Moreover, we calculate the relative variation between CF4 and CF3, which shows similar results between the two, with a general underestimation of CF3 respect with CF4. The maximum variation on land, although within the uncertainty estimated in each model, is about 12 % around Pozzuoli and 5–8 % in the western metropolitan area of Naples. As consequence of this similarity, we can argue that both CF3 and CF4 can be used to estimate the effect of the sea on the final PVHA applied to CFc.

As we have stressed above, the location and magnitude of the decrease in the hazard assessment computed in this study when considering submerged vents is due to the features of CFc that are not general for other volcanoes, as for example in the case of the Auckland Volcanic Field (Bebbington and Cronin, 2010; Sandri et al., 2012). In such cases, the sensitivity of PVHA to the effect of the sea might be important also at inland location. Furthermore, the value of the differences in PVHA obtained here for CFc might not be negligible when using the hazard assessment to take rational decision for risk mitigation based for example on Cost/Benefit Analysis (e.g. Marzocchi and Woo, 2009), as in general they might change significantly the areas where an action should or should not be taken.

5 Conclusions

We explored the effect of potentially offshore eruptions on the PVHA for tephra fallout, by comparing four different hypotheses for tephra production from submerged vents. The proposed models H3 and H4 seem to be a reasonable way to account for submerged vent locations, at least in our application at CFc. In such application,

The effect of submerged vents on PVHA for tephra fallout

R. Tonini et al.

Title Page

Abstract

Introduction

Conclusions

References

Tables

Figures



Back

Close

Full Screen / Esc

Printer-friendly Version

Interactive Discussion



The effect of submerged vents on PVHA for tephra fallout

R. Tonini et al.

Title Page

Abstract

Introduction

Conclusions

References

Tables

Figures

◀

▶

◀

▶

Back

Close

Full Screen / Esc

Printer-friendly Version

Interactive Discussion

the differences among the four proposed PVHAs are within the epistemic uncertainty attached to the most-commonly used H1 model, and are mostly confined to offshore areas. However, this might be a consequence of two peculiarities of CFc (i.e. the low probability of offshore vent opening and the SE direction of prevalent winds). In addition, such differences might not be negligible in terms of risk mitigation strategies and the effects could be completely different for other volcanoes worldwide. As consequence, we argue that a comparison with PVHAs based on H3 and H4 assumption might be a simple and computationally cheap strategy to quantify the effect of submerged vents on subaerial tephra production and related hazard.

The proposed contribution neglects possible efficient magma–water interaction at very shallow waters, that should be considered in future works on more comprehensive PVHA for tephra fallout and other phenomena, to further explore the sensitivity of hazards to such effect.

Acknowledgements. The work has been developed in the framework of “ByMuR” (<http://bymur.bo.ingv.it>), a project funded by the Italian Ministry of Education, Universities and Research, “V1: Probabilistic Volcanic Hazard Assessments”, a project funded by the Italian Civil Protection Department, “MEDSUV: MEDiterranean SUPersite Volcanoes”, a project funded by EU (FP7). AC acknowledges also the EU Research Project (FP7) “VERTIGO”.

References

- Bebbington, M. S. and Cronin, S. J.: Spatio-temporal hazard estimation in the Auckland Volcanic Field, New Zealand, with a new event-order model, *B. Volcanol.*, 73, 55–72, 2010. 7190
- Chiodini, G., Caliro, S., De Martino, P., Avino, R., and Gherardi, F.: Early signals of new volcanic unrest at Campi Flegrei caldera? Insights from geochemical data and physical simulations, *Geology*, 40, 943–946, 2012. 7184
- Costa, A., Dell’Erba, F., Di Vito, M. A., Isaia, R., Macedonio, G., Orsi, G., and Pfeiffer, T.: Tephra fallout hazard assessment at the Campi Flegrei caldera (Italy), *B. Volcanol.*, 71, 259–273, 2009. 7183, 7184, 7185, 7188, 7189

**The effect of
submerged vents on
PVHA for tephra
fallout**R. Tonini et al.

[Title Page](#)[Abstract](#)[Introduction](#)[Conclusions](#)[References](#)[Tables](#)[Figures](#)[Back](#)[Close](#)[Full Screen / Esc](#)[Printer-friendly Version](#)[Interactive Discussion](#)

- Selva, J., Marzocchi, W., Papale, P., and Sandri, L.: Operational eruption forecasting at high-risk volcanoes: the case of Campi Flegrei, Naples, *J. Appl. Volcanol.*, 1, 5, 2012a. 7184, 7188
- 5 Selva, J., Orsi, G., Di Vito, M. A., Marzocchi, W., and Sandri, L., Probability hazard map for future vent opening at Campi Flegrei caldera, Italy, *B. Volcanol.*, 74, 497–510, 2012b. 7188, 7194
- Selva, J., Costa, A., Sandri, L., Macedonio, G., and Marzocchi, W.: Probabilistic short-term volcanic hazard in phases of unrest: a case study for tephra fallout, *J. Geophys. Res.*, in press, 2014. 7183
- 10 Sheridan, M. F. and Wohletz, K. H.: Hydrovolcanism: basic considerations and review, *J. Volcanol. Geoth. Res.*, 17, 1–29, 1983. 7183, 7185
- Smith, V. C., Isaia, R., and Pearce, N. J. G.: Tephrostratigraphy and glass compositions of post-15 kyr Campi Flegrei eruptions: implications for eruption history and chronostratigraphic markers, *Quaternary Sci. Rev.*, 30, 3638–3660, 2011. 7184

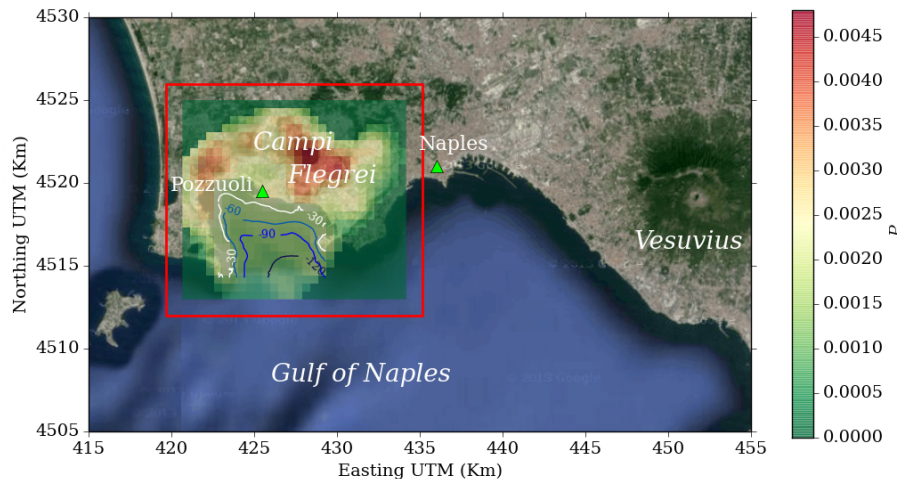
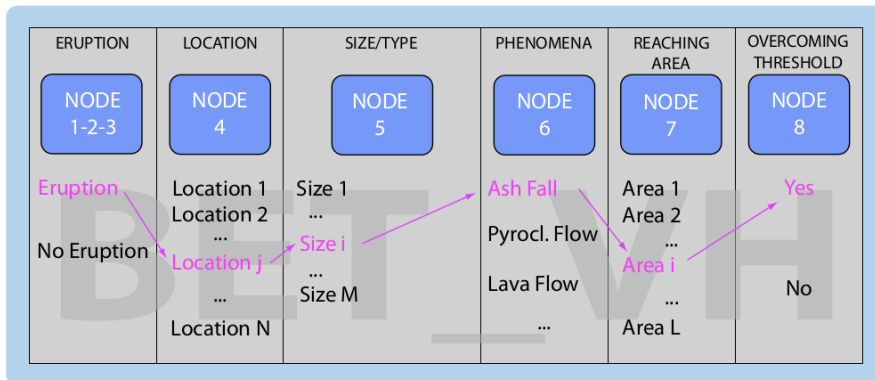


Figure 1. General event tree scheme for BET_VH after Marzocchi et al. (2010) (upper panel). Campi Flegrei caldera (red rectangle) and vent opening probability map of the 700 vents after Selva et al. (2012b) (bottom panel). Isobaths at 30, 60, 90 and 120m depth in the Gulf of Pozzuoli are shown (contour lines from white to dark blue).

The effect of submerged vents on PVHA for tephra fallout

R. Tonini et al.

Title Page

Abstract Introduction

Conclusions References

Tables Figures

◀ ▶

◀ ▶

Back Close

Full Screen / Esc

Printer-friendly Version

Interactive Discussion



The effect of submerged vents on PVHA for tephra fallout

R. Tonini et al.

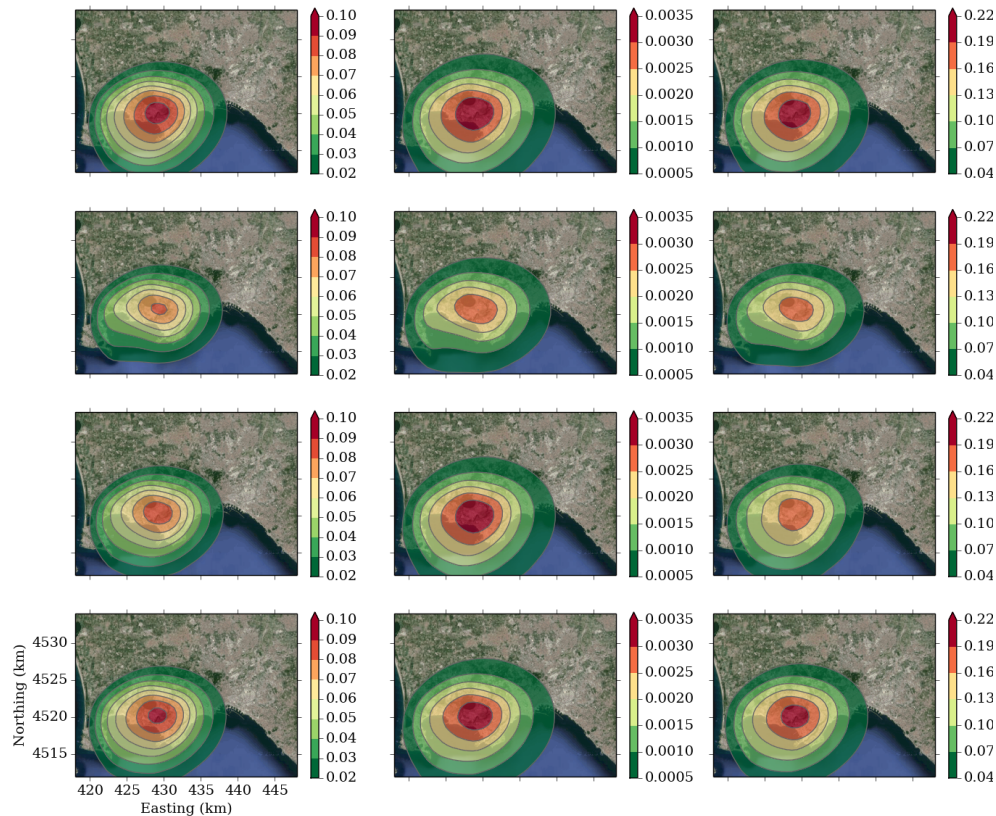


Figure 2. PVHA based on H1, H2, H3 and H4 hypotheses at CFc are shown from top to bottom respectively (CF1, CF2, CF3 and CF4). The left column's panels show the best guess (average) value for the probability of observing a tephra load larger than 3 kPa in 50 years due to CFc magmatic eruptions, according to the PVHA model adopted. Mid and right column's panels show respectively the corresponding 10th and 90th percentiles.

Title Page	
Abstract	Introduction
Conclusions	References
Tables	Figures
◀	▶
◀	▶
Back	Close
Full Screen / Esc	
Printer-friendly Version	
Interactive Discussion	

The effect of submerged vents on PVHA for tephra fallout

R. Tonini et al.

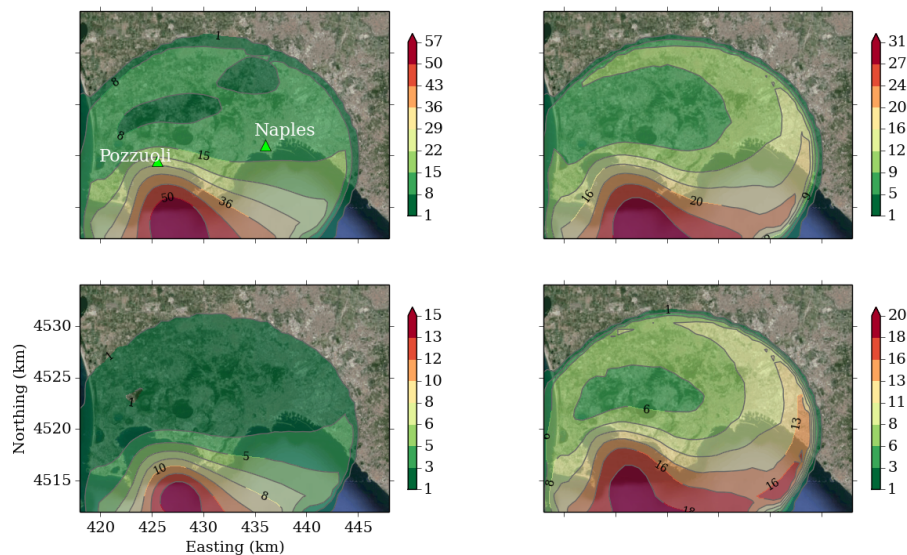


Figure 3. Percent variation between CF1 and CF2 (top left panel), between CF1 and CF4 (top right panel) and between CF1 and CF4 (bottom left panel) relative to CF1 (in terms of average probability to overcome a threshold equal to 3 KPa in a time window of 50 years). Bottom right panel shows the percent variation between CF4 and CF3.

Title Page

Abstract

Introduction

Conclusions

References

Tables

Figures

◀

▶

◀

▶

Back

Close

Full Screen / Esc

Printer-friendly Version

Interactive Discussion

