



This discussion paper is/has been under review for the journal Natural Hazards and Earth System Sciences (NHESD). Please refer to the corresponding final paper in NHESD if available.

On the clustering of winter storm loss events over Germany

M. K. Karremann¹, J. G. Pinto^{1,2}, P. J. von Bomhard¹, and M. Klawa³

¹Institute for Geophysics and Meteorology, University of Cologne, Cologne, Germany

²Department of Meteorology, University of Reading, Reading, UK

³DeutscheRück AG, Düsseldorf, Germany

Received: 5 February 2014 – Accepted: 21 February 2014 – Published: 4 March 2014

Correspondence to: M. K. Karremann (mkarre@meteo.uni-koeln.de)

Published by Copernicus Publications on behalf of the European Geosciences Union.

NHESD

2, 1913–1943, 2014

On the clustering of
winter storm loss
events over Germany

M. K. Karremann et al.

Title Page

Abstract

Introduction

Conclusions

References

Tables

Figures

⏪

⏩

◀

▶

Back

Close

Full Screen / Esc

Printer-friendly Version

Interactive Discussion



Abstract

During the last decades, several windstorm series hit Europe leading to large aggregated losses. Such storm series are examples of serial clustering of extreme cyclones, presenting a considerable risk for the insurance industry. Clustering of events and return periods of storm series for Germany are quantified based on potential losses using empirical models. Two reanalysis datasets and observations from German weather stations are considered for 30 winters. Histograms of events exceeding selected return levels (1, 2 and 5 year) are derived. Return periods of historical storm series are estimated based on the Poisson and the negative Binomial distributions. Over 4000 years of global circulation model simulations forced with current climate conditions are analysed to provide a better assessment of historical return periods. Estimations differ between distributions, for example 40 to 65 years for the 1990 series. For such less frequent series, estimates obtained with the Poisson distribution clearly deviate from empirical data. The negative Binomial distribution provides better estimates, even though a sensitivity to return level and dataset is identified. The consideration of GCM data permits a strong reduction of uncertainties. The present results support the importance of considering explicitly clustering of losses for an adequate risk assessment for economical applications.

1 Introduction

Intense extra-tropical storms are the major weather hazard affecting Western and Central Europe (Schwierz et al., 2010; Haylock et al., 2011; Pinto et al., 2012). Such storms typically hit Western Europe when the upper tropospheric jet stream is intensified and extended towards Europe (e.g. Hanley and Caballero, 2012; Gómara et al., 2013). If these large-scale conditions remain over several days, multiple windstorms may affect Europe in a comparatively short time period (Fink et al., 2009). The occurrence of such “cyclone families” (e.g. Bjercknes and Solberg, 1922) can lead to large socio-economic

NHESSD

2, 1913–1943, 2014

On the clustering of winter storm loss events over Germany

M. K. Karremann et al.

Title Page

Abstract

Introduction

Conclusions

References

Tables

Figures



Back

Close

Full Screen / Esc

Printer-friendly Version

Interactive Discussion



On the clustering of winter storm loss events over Germany

M. K. Karremann et al.

Title Page	
Abstract	Introduction
Conclusions	References
Tables	Figures
◀	▶
◀	▶
Back	Close
Full Screen / Esc	
Printer-friendly Version	
Interactive Discussion	

impacts, cumulative losses (sum of losses caused by a particular series of events or aggregated over a defined time period) and fatalities. In statistical terms, this effect is known as serial clustering of events, for example of cyclones (Mailier et al., 2006). A recent study showed that clustering of extra-tropical cyclones over the Eastern North Atlantic and Western Europe is a robust feature in reanalysis data (Pinto et al., 2013). Furthermore, there is evidence that clustering increases for extreme cyclones, particularly over the North Atlantic storm track area and Western Europe (Vitolo et al., 2009; Pinto et al., 2013). In terms of windstorm-associated losses, a general result is that large annual losses can be traced back to multiple storms within a calendar year (MunichRe, 2001). One of the most severe storm series regarding insured losses for the German market occurred in early 1990, which includes the storms “Daria¹”, “Herta”, “Nana”, “Judith”, “Ottilie”, “Polly”, “Vivian” and “Wiebke”, reaching a total cost of ca. 5500 million € indexed to 2012 (Aon Benfield, 2013). The cumulative damages associated with the windstorm series in December 1999 and January 2007 rank among the highest of the recent decades, with total costs reaching 1500 million € and about 3000 million € in terms of insured losses, respectively (Aon Benfield, 2013). Also the winter of 2013/2014 has been characterised by multiple storms leading to large socio-economic impacts (“Christian”, 28.10.2013; “Xaver”, 7 December 2013; “Dirk”, 23 December 2013; “Anne”, 3 January 2014; and “Christina”, 5 January 2014), which have affected primarily the British Isles.

The estimation of return periods of single storms (event based losses) and storm series (cumulative losses) is needed to determine the “Occurrence Loss Exceeding Probability” (OEP; event loss) and the “Aggregate Loss Exceeding Probability” (AEP; accumulated loss per calendar year) for risk assessment and the fulfilment of the Solvency II (Solvency Capital Requirements, QIS5) requirements. As top annual aggregated market losses (like 1990 for Germany) are associated with multiple storms, the importance of clustering has long been discussed within the Insurance industry. How-

¹Storm names as given by the *Freie Universität Berlin* as used by the German Weather Service (DWD). Source: <http://www.met.fu-berlin.de/adopt-a-vortex/historie/>



ever, little to no attention has been paid to the clustering of windstorm related losses in peer-review literature. In this study, the clustering of estimated potential losses associated with extra-tropical windstorms is analysed in detail for Germany and for recent decades. In particular, the probability of occurrence of multiple storm events per winter over Germany exceeding a certain return level is evaluated with help of reanalysis and global circulation model (GCM) data.

2 Data

In statistical terms, it is possible to build a simple storm loss model using both wind gusts and daily maximum 10 m wind speeds. For example, Pinto et al. (2007) gave evidence that loss estimations following the Klawa and Ulbrich (2003) approach based on both variables provide equivalent results. For this study, wind gusts are available and considered for DWD observation data. As no gust data is available for reanalysis and GCM, daily maximum 10 m wind speed is accounted for those datasets.

Reanalysis data from the National Centre for Environmental Prediction/National Centre for Atmospheric Research (hereafter NCEP) as well as from the European Centre for Medium Range Weather Forecast (ERA-Interim project, hereafter ERAI) are used in this study. The NCEP data is available on a Gaussian grid with a resolution of T62 (1.875°, roughly 200 km; Kistler et al., 2001), while the ERAI data is available on a reduced Gaussian grid with a resolution of T255 (0.7°; about 80 km over Central Europe; Dee et. al., 2011). For comparability, ERAI is interpolated to the NCEP grid performed with a bilinear interpolation method (Fig. 1a shows relevant grid points for Germany). For both datasets, the 6 hourly instantaneous 10 m wind speed (hereafter wind) is considered. The daily maxima (largest values for each calendar day between 00:00, 06:00, 12:00 and 18:00 UTC) are selected. Based on these daily maxima the 98th percentiles (see Sect. 3) are calculated for 30 winters (October to March, 1981/1982 to 2010/2011) respectively.

On the clustering of winter storm loss events over Germany

M. K. Karremann et al.

Title Page

Abstract

Introduction

Conclusions

References

Tables

Figures

◀

▶

◀

▶

Back

Close

Full Screen / Esc

Printer-friendly Version

Interactive Discussion



On the clustering of winter storm loss events over Germany

M. K. Karremann et al.

Title Page

Abstract

Introduction

Conclusions

References

Tables

Figures

◀

▶

◀

▶

Back

Close

Full Screen / Esc

Printer-friendly Version

Interactive Discussion



In order to obtain statistically robust estimates of the return periods of storm series based on potential losses, a large ensemble of 47 simulations performed with the coupled ECHAM5/MPI-OM1 (European Centre Hamburg Version 5/Max Planck Institute Version – Ocean Model version 1; Jungclaus et al., 2006; hereafter ECHAM5) GCM is analysed. These simulations have a wide variety of set ups, but are all consistent with greenhouse gas forcing conditions between the year 1860 (pre-industrial) and near future (2030) climate conditions. All simulations were performed with T63 resolution (1.875° , roughly 200 km, see grid in Fig. 1b). 37 of them were conducted for the ESSENCE (Ensemble SimulationS of Extreme weather events under Nonlinear Climate changE) project (Sterl et al., 2008). Details of all simulations can be found in Supplement A. Again, the 6 hourly instantaneous 10 m wind speed is used to determine the daily maxima. The 98th percentile for GCM data is calculated based on the 37 ESSENCE simulations for the winter half year, as the length of this dataset is long enough to derive statistical stable estimates.

As the physical cause for building losses can be primarily attributed to the peak wind gusts (Della-Marta et al., 2009) a dataset of daily maxima of the 10 m wind gust observations from the German weather service (“*Deutscher Wetterdienst*”, hereafter DWD) is used for comparability and validation purposes. The time series of these datasets differ in terms of the length of the available time period and data quality (e.g. Born et al., 2012). After an evaluation, 112 stations (Fig. 1c) are considered for further analyses. For these stations, wind gust for at least 80 % of the days in winter is available for the period 1981/82 to 2010/11. The 98th percentile is calculated according to the winter half year. Following the normalisation with the 98th percentile, the values were interpolated using distance weighted interpolation to the 0.25° grid of the population density.

The German Insurance Association (“*Gesamtverband der Deutschen Versicherungswirtschaft*”, hereafter GDV) provides a simulation of daily residential building losses for private buildings for the period of 1984 to 2008 for the 439 administrative districts of Germany. This data was collected from most of the insurance companies active

On the clustering of winter storm loss events over Germany

M. K. Karremann et al.

Title Page

Abstract

Introduction

Conclusions

References

Tables

Figures

◀

▶

◀

▶

Back

Close

Full Screen / Esc

Printer-friendly Version

Interactive Discussion



in the German market, so it is representative for the insured market loss in Germany and is here used as a reference. Loss ratios, i.e., the ratio between losses attributed to one event and the total insured value for that area is used. Inflation effects can be neglected as well as other socio-economic factors that may have changed slightly during this period. More information can be found in Donat et al. (2011) and Held et al. (2013).

As insurance data is not available for the whole analysed period, population of the year 2000 is used as proxy for the estimation of potential losses. This dataset was provided by the Centre for International Earth Science Information Network (CIESIN) of the Columbia University and the Centro Internacional de Agricultura Tropical (CIAT). The population density is given as inhabitants km^{-2} , with a spatial resolution of $0.25^\circ \times 0.25^\circ$ (Fig. 1, coloured boxes). For grid boxes, which are only partially within German borders the percentage of each box is calculated with the GeoInformationsSystem (GIS).

3 Methodology

In this section, the potential loss indices based on the approach by Klawns and Ulbrich (2003) and Pinto et al. (2012) are presented. These indices are used to select events exceeding a certain return level. For the chosen events, histograms are analysed, and statistical distributions like the Poisson and the negative Binomial distribution are used to estimate return periods of storm series. As the GCM data overestimates the frequency of zonal weather patterns, the approach to calibrate GCM data towards reanalysis using weather types is described.

3.1 Storm loss indices

The potential loss associated with a storm can be quantified using simple empirical models (Palutikof and Skellern, 1991; Klawns and Ulbrich, 2003; Pinto et al., 2007). Here, calendar-day-based potential damages for Germany are estimated by using

a modified version of the loss model by Klawns and Ulbrich (2003) for stations and gridded data. The general assumptions of the loss model can be found below.

- Losses occur only if a threshold minimum wind speed is exceeded. This threshold corresponds to the local 98th percentile (v_{98}) of the daily maximum wind speed (e.g. Palutikof and Skellern, 1991; Klawns and Ulbrich, 2003).
- Above this threshold, the potential damage increases with the cube of the maximum wind speed, as the kinetic energy flux is proportional to the cube of wind speed. This implies a strong non-linearity in the wind – loss relation.
- Insured losses depend on the amount of insured property values within the affected area. As real insured property values are not available, the local population density (POP) is used as proxy.
- The assignment of gridded wind data (reanalyses, GCM) and population density is done with the nearest neighbour approach.

Following these assumptions, the potential loss (LI_{raw}) per calendar day is defined by the sum of all grid points ij with v_{ij} exceeding $v_{98,ij}$ weighted by the population density:

$$LI_{\text{raw}} = \sum_{ij} \left[\left(\frac{v_{ij}}{v_{98,ij}} - 1 \right)^3 \right] \cdot \text{POP}_{ij} \cdot I(v_{ij}, v_{98,ij}) \quad (1)$$

$$\text{with } I(v_{ij}, v_{98,ij}) = \begin{cases} 0 & \text{for } v_{ij} < v_{98,ij} \\ 1 & \text{for } v_{ij} > v_{98,ij} \end{cases}$$

POP_{ij} = population density for grid point ij , v_{ij} = wind speed at grid point ij and $v_{98,ij}$ = 98th percentile at grid point ij .

Following Pinto et al. (2012), a meteorological index (MI_{raw}) is also considered. MI_{raw} is defined as the sum of all grid points ij per calendar day, where v_{ij} is exceeding $v_{98,ij}$

NHESSD

2, 1913–1943, 2014

On the clustering of winter storm loss events over Germany

M. K. Karremann et al.

Title Page

Abstract

Introduction

Conclusions

References

Tables

Figures

◀

▶

◀

▶

Back

Close

Full Screen / Esc

Printer-friendly Version

Interactive Discussion



without weighting the population density.

$$MI_{\text{raw}} = \sum_{ij} \left[\left(\frac{v_{ij}}{v_{98,ij}} - 1 \right)^3 \right] \cdot I(v_{ij}, v_{98,ij}) \quad (2)$$

$$\text{with } I(v_{ij}, v_{98,ij}) = \begin{cases} 0 & \text{for } v_{ij} < v_{98,ij} \\ 1 & \text{for } v_{ij} > v_{98,ij} \end{cases},$$

- 5 In this study, a new approach is used to separate events from daily maximum data:
- The local temporal maximum of LI_{raw} (MI_{raw}) for a three-day gliding time window is defined as event. Given that Germany is a comparatively small area, three days is reasonable for separating events. Furthermore, it corresponds to the 72 h event definition that is often used by insurance companies in reinsurance treaties (cf. Klawa and Ulbrich, 2003).
 - If no clear loss maximum can be found on consecutive days, the first day is selected as event date.

In order to enable an accurate assignment of maximum wind values at individual grid points ij to the identified events, following considerations are necessary:

- 15
- For each grid point ij , the three-day maximum (of day before, day and day after) of $\frac{v_{ij}}{v_{98,ij}}$ is identified around each event date and aggregated to the LI_{3D} (MI_{3D}) of the corresponding date.
 - In some cases, the events are only separated by one day (e.g. 26 February 1990 and 28 February 1990). In these cases, the identified local maximum value of the grid point is allocated to the day with higher $v_{98,ij}$ exceedance.
- 20

On the clustering of winter storm loss events over Germany

M. K. Karremann et al.

Title Page

Abstract

Introduction

Conclusions

References

Tables

Figures

◀

▶

◀

▶

Back

Close

Full Screen / Esc

Printer-friendly Version

Interactive Discussion



Only spatially coherent wind fields are accumulated to the events. The method can be described as:

$$LI_{3D} = \sum_{ij} \left[\max_{3D} \left(\frac{v_{ij}}{v_{98,ij}} \right) - 1 \right]^3 \cdot POP_{ij} \cdot I(v_{ij}, v_{98,ij}) \quad (3)$$

$$MI_{3D} = \sum_{ij} \left[\max_{3D} \left(\frac{v_{ij}}{v_{98,ij}} \right) - 1 \right]^3 \cdot I(v_{ij}, v_{98,ij}) \quad (4)$$

5 with $I(v_{ij}, v_{98,ij}) = \begin{cases} 0 & \text{for } v_{ij} < v_{98,ij} \\ 1 & \text{for } v_{ij} > v_{98,ij} \end{cases}$,

Hereafter LI_{3D} (MI_{3D}) is named LI (MI) for simplicity. These formulations are used for reanalysis, DWD and GCM data. Following, the resulting time series of LI (MI) are ranked and 1, 2 and 5 year return levels are computed. The selected samples of events exceeding each corresponding threshold (e.g. 30, 15 and 6 events respectively for 30 years reanalysis data) are then assigned to individual winters. The naming is given by the second year, e.g. winter 1989/1990 is named 1990.

3.2 Statistics

15 The Poisson distribution is the simplest approach to describe independent events and is often used to model the number of events occurring within a defined time period. This procedure is useful to describe the temporal distribution of events at a certain region and is typically used by insurance companies to estimate losses of winter storms. This discrete distribution depends on one parameter and is a special case of the Binomial distribution. For the Poisson distribution the predictand λ is equal to the variance ($Var(x)$) and mean ($E(x)$) at once. For a random variable x the probability distribution

On the clustering of winter storm loss events over Germany

M. K. Karremann et al.

Title Page

Abstract

Introduction

Conclusions

References

Tables

Figures

◀

▶

◀

▶

Back

Close

Full Screen / Esc

Printer-friendly Version

Interactive Discussion



is defined as:

$$P(x) = \frac{\lambda^x e^{-\lambda}}{x!}, x = 0, 1, 2, \dots; \quad E(x) = \lambda = \text{Var}(x) \quad (5)$$

Beside the Poisson distribution the negative Binomial distribution is one of the major statistics that is used to describe insurance risks. After Mailier et al. (2006), the dispersion statistics (a simple measure of clustering) is defined as

$$\Psi = \frac{\text{Var}(x)}{E(x)} - 1 \quad (6)$$

If the $\text{Var}(x) > E(x)$ the distribution is overdispersive (clustering), for $E(x) > \text{Var}(x)$ the distribution is underdispersive (regular) and for $E(x) = \text{Var}(x)$ it is a random process. Following Wilks (2006), the probability of the negative Binomial distribution is defined as

$$P(x) = \frac{\Gamma(x+k)}{\Gamma(k) \cdot x!} (1-q)^k q^x \quad (7)$$

with $\Gamma()$ = gamma function, k = auxiliary parameter > 0 (see below), and $0 < q < 1$.

As in our study $E(x)$ is fixed as the return level of considered events, q is the only free parameter. The estimation of q is done by a nonlinear least-square estimate using the Gauss–Newton algorithm.

Considering $E(x) = \frac{kq}{1-q}$ and $\text{Var}(x) = \frac{kq}{(1-q)^2}$

$$\Rightarrow k = \frac{(1-q)}{q} E(x) \quad (\text{Wilks, 2006}) \quad (8)$$

the dispersion statistics can also be described as

$$\Psi = \frac{1}{1-q} - 1 \geq 0 \quad (9)$$

NHESSD

2, 1913–1943, 2014

On the clustering of winter storm loss events over Germany

M. K. Karremann et al.

Title Page

Abstract

Introduction

Conclusions

References

Tables

Figures

◀

▶

◀

▶

Back

Close

Full Screen / Esc

Printer-friendly Version

Interactive Discussion



For $q = 0$, the negative Binomial distribution is equal to the Poisson distribution. The higher q , the higher is the overdispersion and therefore the clustering of events.

The return period is defined as the inverse of the probability (Emanuel and Jagger, 2010). The estimation of return periods of storm series consisting of events with a certain return level is calculated by the probability P for x events of certain intensity within one year.

$$\text{WKP}(x) = \frac{1}{P(x)} \quad (10)$$

3.3 Calibration of GCM data with circulation weather types

In order to obtain robust estimates of return periods for the historical storm series, the large ensemble of ECHAM5 simulations is considered to enhance the data sample. As the large-scale atmospheric circulation is too zonal over Europe in GCMs (e.g., Sillmann and Croci-Maspoli, 2009), a correction of the model bias towards the reanalysis climatology is necessary. This correction is performed based on weather types, so that the variability of weather patterns over Germany corresponds to the historical time period. The selected weather typing classification is the circulation weather type (CWT) following Lamb (1972) and Jones et al. (1993). The large-scale flow conditions over Germany are calculated from 00:00 UTC mean sea level pressure fields, using 10° E, 50° N (near Frankfurt/Main) as central grid point. Each day is classified into one of eight directional types defined as 45° sectors: northeast (NE), east (E), southeast (SE), south (S), southwest (SW), west (W), northwest (NW), and north (N). Two circulation types are considered: cyclonic (C) and anticyclonic (A). If neither rotational nor directional flow dominates, the day is attributed as hybrid CWT (e.g. anticyclonic-west). The correction is done by adapting the relative frequency of events per CWT in the GCM simulations to the number of events per CWT in the ERAI data (see 4.3). This is only a first order correction of the model biases. In fact, differences in the probability density function of extreme losses per weather type may still be present (cf. Pinto et al., 2010).

On the clustering of winter storm loss events over Germany

M. K. Karremann et al.

Title Page

Abstract

Introduction

Conclusions

References

Tables

Figures

◀

▶

◀

▶

Back

Close

Full Screen / Esc

Printer-friendly Version

Interactive Discussion



4 Results

In this section, the different loss indices (Sect. 4.1) and the events selection (Sect. 4.2) are first analysed for the reanalysis period. Second, results of the calibration of GCM data based on CWTs are presented in Sect. 4.3. The estimation of return periods for storm series based on reanalysis (Sect. 4.4) and GCM data (Sect. 4.5) follow.

4.1 Comparison of loss indices for the reanalysis period

The loss indices described in Sect. 3.1 are now compared based on different datasets. First, the MIs based on both reanalysis datasets are compared to the MI derived from DWD data as an illustrating example (storm series of early 1990). Results for the period 15 January to 15 March 1990 are displayed in Fig. 2a. The outcome shows that the timing of extreme events (“Daria”; 25 January 1990, “Herta”; 4 February 1990, “Judith”; 7 February 1990, “Vivian”; 26 February 1990 and “Wiebke”; 1 March 1990) is generally well identified from all three datasets. In some cases, a one day shift is observed, e.g. for the 12 and 15 of February. Such modifications are associated with the methodology of the data assimilation within the dataset (e.g. highest winds in NCEP may occur at 18:00 UTC of a certain day, for ERAI only 6 h later). In case of doubt the first day is taken (see Sect. 3.1). This means that the split-up of events and thus accurate event identification may depend on the dataset. Though the timing of the events is well accessed, the relative intensity of the events sometimes differs from dataset to dataset (e.g. “Vivian”, 26 February 1990). The results for the LIs (Fig. 2b) are also compared to accumulated potential losses based on the GDV data. With this aim, the latter is also aggregated for time windows of three days. The timing of the identified events is predominantly correct. As expected, the findings are similar to those for the MIs, with a good assessment of the timing of the events and differences in terms of the relative intensity between datasets. A calibration of the intensity towards the GDV data is not performed, as a linear calibration (as implemented e.g. in Held et al., 2013) would not change the relative ranking of events within a certain dataset. Nevertheless, storms on

NHESSD

2, 1913–1943, 2014

On the clustering of winter storm loss events over Germany

M. K. Karremann et al.

Title Page

Abstract

Introduction

Conclusions

References

Tables

Figures



Back

Close

Full Screen / Esc

Printer-friendly Version

Interactive Discussion



successive days cannot always be well separated with our methodology. For example, storms “Elvira” (4 March 1998) and “Farah” (5 March 1998) cannot be separated for neither reanalysis nor DWD data (not shown). However, this is also not possible based on insurance loss data. On the other hand, our method separates important storms like “Vivian” and “Wiebke” (28 February 1990 and 1 March 1990; Fig. 2).

The top 30 events for the two reanalysis datasets as well as the DWD observations are shown in Table 1. Per definition, these are the events exceeding the 1 year return level for each dataset. The most prominent historical storms affecting Germany like Kyrill (18 January 2007), Vivian (26 February 1990) and Daria (25 January 1990) are identified in all three datasets as top events. However, some differences are found regarding the exceeded return level. For example, storm Daria is estimated as a 5 year return level event for NCEP and DWD data and as 2 year event for ERAI. These differences are partly attributed by the resolution of the datasets and to known caveats. For instance, the relative weak values for Lothar (26 December 1999) in NCEP can be directly attributed to an insufficient representation of this storm in the dataset (cf. Ulbrich et al., 2001; cf. their Fig. 1). Other differences may be associated with data availability or interpolation to the population density grid for DWD vs. the lower resolution gridded datasets for NCEP and ERAI. In spite of these limitations, the method is able to identify consistent events, which constitutes a reliable basis to estimate the return period of storm series in the following.

4.2 Comparison of identified events for the reanalysis period

Histograms for different datasets and return levels (1, 2, 5 year) are now analysed for the 30 year period. For each threshold, the selected LI samples (30, 15 and 6 events, respectively) are shown in Fig. 3. The distribution of the events over the winters for both reanalysis datasets is similar with a maximum of four 1 year return level events in the winter 1989/1990 (Fig. 3a and b, denoted 1990). For ERAI, the winter 1983 also features four 1 year events, while NCEP only features two events. For stronger events exceeding a return level of 2 year or 5 year both datasets are generally in good agree-

On the clustering of winter storm loss events over Germany

M. K. Karremann et al.

Title Page

Abstract

Introduction

Conclusions

References

Tables

Figures

◀

▶

◀

▶

Back

Close

Full Screen / Esc

Printer-friendly Version

Interactive Discussion



ment, identifying clearly the winters with well-known storm series like in 1990 or 2007. Differences are recognised for the storm series of 2000 (1999/2000, cp. Figure 3a, b). This can be attributed to the limited representation of storms like “Lothar” (26 December 1999) in NCEP (cf. Ulbrich et al., 2001). In comparison to the estimations based on the DWD observation data (Fig. 3c) some differences to the reanalysis data are apparent. For example the storm series of 2002 is not identified for DWD data. On the other hand, the storm series of 1990 includes 6 events for the DWD data (1 year return level). As mentioned in Sect. 4.1, this could be attributed both to known caveats of the datasets, station density vs. gridded data, and to the methodology used to assign the data to the population grid cells. In spite of these deviations, the historical storm series can be generally identified in all datasets.

4.3 Calibration of GCM data based on CWTs

In order to enable the calibration of the GCM data, the distribution of the events for each CWT within the reanalysis period is analysed. Each loss event is assigned to the identified CWT for the corresponding date. Additionally to the 1, 2 and 5 year return levels, a return level of 0.5 years is considered to help with the calibration. The resulting histograms are similar for both reanalysis datasets (Fig. 4a and b). Considering frequent events (0.5 year), most events are identified for W CWT. The focus on this class becomes more pronounced for higher return levels. For example for a return level of 5 years the maximum of all events are in the westerly CWT for both reanalysis. This predominance of windstorms in the westerly flow type is in line with previous results (e.g. Donat et al., 2010; Pinto et al., 2010). For the GCM data (Fig. 4c) the distribution of the events per CWT is different. Most frequent events (e.g. 0.5 year) are identified for A CWT. For higher return levels (e.g. 5 year) the events are more equally distributed over all CWTs than for the two reanalysis. This bias is corrected assuming the same frequency of events per CWT as in ERAI for GCM data. The resulting distribution is shown in Fig. 4d.

On the clustering of winter storm loss events over Germany

M. K. Karremann et al.

Title Page

Abstract

Introduction

Conclusions

References

Tables

Figures



Back

Close

Full Screen / Esc

Printer-friendly Version

Interactive Discussion



4.4 Estimation of return periods of storm series based on reanalysis

The identified frequency of events per year for the two reanalysis datasets as well as the DWD based dataset is almost identical for the considered return levels (cf. Supplement B1). For the sake of succinctness, in the following only results based on ERAI data are discussed in detail. The return period of storm series with a certain return level is estimated based on the negative Binomial and on the Poisson distribution. The corresponding histograms for the different fits are shown in Fig. 5 (left). The related return periods are shown in Table 2 (left).

A return period about 65 years is estimated for a storm series with four 1 year return level events (like 1990) based on the Poisson distribution (Table 2). For the negative Binomial distribution the assessed return period is circa 49 years. On the other hand, for a return level of observed two 5 years events (like 1990), the estimated return periods are 61 years for Poisson and about 42 years for negative Binomial distributions. A Ψ value of about 0.16 for 1 year return level and of 0.25 for 5 year return level are determined for the negative Binomial distribution, both indicating serial clustering (cf. Supplement D). The estimated return period of storm series with two events per year for 1 year level (like in 1984) with the negative Binomial distribution and the Poisson distribution are closer to each other, with about 5.9 and 5.4 years (Table 2). In fact, for 1 year events large deviations between the two distributions are only found for four or more events per year. The same is true for 2 (5) year occurrences and three (two) or more events per year (Table 2). In these cases, the Poisson distribution clearly overestimates the return period of multiple events per winter.

In order to test the sensitivity to certain storm series like 1990, additional computations were performed based on NCEP and ERAI as above but single years (with three and four events) were removed respectively. Results show for all data little dependence on the selected years (not shown). For comparatively frequent storm series, a relatively small spread is identified, e.g. for 1 year return level and three events per year the estimated return period remains between 15 and 16 years. On the other hand, for 5 year

On the clustering of winter storm loss events over Germany

M. K. Karremann et al.

Title Page

Abstract

Introduction

Conclusions

References

Tables

Figures



Back

Close

Full Screen / Esc

Printer-friendly Version

Interactive Discussion



return levels and three events the range is much larger, with estimates between 112 and 306 years (not shown).

4.5 Estimation of return periods of storm series based on GCM data

The large ensemble of GCM runs is now considered to enhance the estimation of return periods of historical storm series. The histograms for the different fits are shown in Fig. 5 (right) and the corresponding return periods are shown in Table 2 (right). The consideration of 4092 years leads to the identification of multiple years with four or more 1 year events (cf. Fig. 5b). This enables more accurate estimates of the return period as well as lower uncertainties (Table 2). Following the above given examples, a return period of 41 years is assessed for a storm series with four events per year exceeding the 1 year return level (like 1990). This value is lower than for the negative Binomial fit based on ERAI data and the Poisson distribution (49 and 65 years, respectively). The obtained return period for two events per year exceeding the 5 year level is about 48 years. Clear deviations between the Poisson distribution and the negative Binomial distribution are also found for four (three/two) or more events for 1 (2/5) year level (cf. Table 2).

The consideration of GCM data with bias correction (GCM_{corr}) leads only to a small difference for return periods, e.g. notable for less frequent events and higher return levels (Table 2). The Ψ for GCM attributions are in all cases clearly positive, also indicating clustering of the events (Supplement D). However, unlike previous results obtained for extra-tropical cyclones (Pinto et al., 2013), the Ψ value does not always increase for larger return levels. For more intense events (5 year return level) the derived Ψ becomes in some cases smaller (e.g. $\Psi = 0.11$ considering all GCM_{corr} runs), indicating less deviation to the Poisson distribution, than for the 1 year events ($\Psi = 0.6$ considering all GCM_{corr} runs). The reason for these differences may be that Pinto et al. (2013) based its conclusions on lower percentiles (and thus a higher frequency of events). This suggests that clustering of windstorm and associated losses is quite complex, particularly in terms of intensity variations. Nevertheless, and in all cases, clear overes-

On the clustering of winter storm loss events over Germany

M. K. Karremann et al.

Title Page

Abstract

Introduction

Conclusions

References

Tables

Figures

◀

▶

◀

▶

Back

Close

Full Screen / Esc

Printer-friendly Version

Interactive Discussion



5 timation of the return period is identified for the GCM based on the Poisson distribution. This is an important result, as it indicates that return periods of storm series are better estimated with the negative Binomial distribution than with the Poisson distribution, especially for winters with a considerable number of events.

10 Analogue to the historical data, a sensitivity analysis was performed regarding the GCM data. In this case, it was analysed how the estimates depend on the choice of GCM runs. With this aim, the computations were repeated for each of the 47 runs (cf. Supplement A) individually and combinations of them. As the length of the runs is different, this also provides some insight on how the results may be sensitive to the
15 length of the time series. For example the estimated return periods of three events a winter above the 1 year return level are assessed to ca. 15 and 16 years depending on whether the whole dataset, selected groups of runs or individual runs (cf. Table 2) are considered. The major difference is the uncertainty: while for all GCM_{corr} data, 15 ± 0.59 years is estimated, the value is for example 15 ± 1.05 years for all ESSENCE_{corr} runs, 16 ± 3.2 years for the PRE_{corr}-run and for example 15 ± 8.24 years for the first Essence_{corr} run (length only 50 years; not included separately in Table 2). PRE_{corr} is different because it is expected to have more (multi) decadal variability (505 years of free running coupled GCM simulation) than shorter 50 year runs. These results demonstrate that the estimation of return periods by the negative Binomial
20 distribution is robust and depend only little the length of dataset. The more events per year are considered, the wider the uncertainty range. For a storm series like in 1990 (four events above the 1 year return level, three above the 2 year return level and two events above the 5 year return level) for all datasets and return levels the negative Binomial based estimates for the return period is between 40 and 65 years. This is
25 for all cases a more reliable estimate compared to the empirical data (cf. Supplement B2) than based on the Poisson distribution, which has an estimate of 65 years (1 year return level) and for more extreme events with a return level of 2- (5-) years an assessment of 79 (61) years. The deviations between the Poisson and the negative Binomial distribution are much larger if less frequent series are considered (Table 2).

On the clustering of winter storm loss events over Germany

M. K. Karremann et al.

[Title Page](#)[Abstract](#)[Introduction](#)[Conclusions](#)[References](#)[Tables](#)[Figures](#)[⏪](#)[⏩](#)[◀](#)[▶](#)[Back](#)[Close](#)[Full Screen / Esc](#)[Printer-friendly Version](#)[Interactive Discussion](#)

On the clustering of winter storm loss events over Germany

M. K. Karremann et al.

Title Page

Abstract

Introduction

Conclusions

References

Tables

Figures

◀

▶

◀

▶

Back

Close

Full Screen / Esc

Printer-friendly Version

Interactive Discussion



For insurance applications, it is often desirable to consider not exactly a certain number of events, but rather a minimum value, e.g. three or more events per year above 2 year return level. With this aim, the estimations of Table 2 were computed for cumulative probabilities (Supplement C). Results are in line with the previous: for example, the estimated return periods for four or more events at the 1 year return level is between 26 and 40 years based on the negative Binomial distribution, whereas by the Poisson distribution is 53 years. For two or more events at the 5 year return level the range is between 42 and 53 years with the negative Binomial distribution, while for the Poisson distribution is 57 years. Also from this perspective, the results clearly indicate the importance of estimates with the negative Binomial distribution, which considers explicitly the clustering of events.

5 Summary and conclusions

For insurance applications, it is important to use reliable methods to estimate “Occurrence Loss Exceeding Probability” (OEP) and the “Aggregate Loss Exceeding Probability” (AEP). With this aim, an adequate quantification of clustering is essential. In this study we analysed different methods to estimate the return period of series of windstorm related losses exceeding selected return levels. For the purpose of statistical robustness, a combination of two reanalysis data, observation DWD data and an ensemble of over 4000 years GCM runs were considered. First, the potential loss for Germany was estimated using an approach of the storm loss model of Klawa and Ulbrich (2003) for all datasets and additionally a meteorological index (Pinto et al., 2012). These methods were adapted to separate consecutive potential losses associated to extreme events within three days. As Germany is a comparatively small area, this time-frame is reasonable for separating events. Moreover, it accords to the 72 h event definition, which is often used by insurance companies in reinsurance treaties (cf. Klawa and Ulbrich, 2003). The estimated events are ranked and only the top events representing a return level of 1 year, 2 year or 5 years are analysed. The distribution of the

On the clustering of winter storm loss events over Germany

M. K. Karremann et al.

Title Page

Abstract

Introduction

Conclusions

References

Tables

Figures

⏪

⏩

◀

▶

Back

Close

Full Screen / Esc

Printer-friendly Version

Interactive Discussion



possible number of significant storm events per year was intensively discussed after the storm series in 1990, which is the top annual aggregated loss for recent decades (e. g. for insurance of residential building's in Germany, after inflation correction: GDV, 2012). Even over 20 years later, the 1990 storm series is used by German companies as an internal benchmark test for their reinsurance cover or capital requirements. A similar discussion was lead in France after the events “Lothar” and “Martin” (Ulbrich et al., 2001) hit the country in late 1999.

The present results demonstrate that the negative Binomial distribution provides good estimates of return periods for less frequent storm series. Future work should focus on an adaption of the choice of events per return level as it could be improved by considering a mixture of events with different return levels within one winter. Another interesting investigation could be to perform a similar analysis of further European countries.

Supplementary material related to this article is available online at <http://www.nat-hazards-earth-syst-sci-discuss.net/2/1913/2014/nhessd-2-1913-2014-supplement.pdf>.

Acknowledgements. We acknowledge the provision of loss data by the German Association of Insurers (“Gesamtverband der Deutschen Versicherungswirtschaft”, GDV) within GDV-project “Climate change impacts on the loss situation in the German insurance sector” (2008–2011). We thank the European Centre for Medium-Range Weather Forecasts for the ERA-Interim reanalysis datasets, and the National Centres for Environmental Prediction/National Centre for Atmospheric Research for the NCEP reanalysis data. We thank the MPI for Meteorology (Hamburg, Germany) and Andreas Sterl from the KNMI (De Bilt, the Netherlands) for providing the GCM data. We also thank the Centre for International Earth Science Information Network (CIESIN), Columbia University; and Centro de Agricultura Tropical (CIAT) providing the Gridded population of the World Version3 (GPWv3): population density grids. Palisades, NY: socioeconomic Data and Applications Centre (SEDAC), Columbia University. Available online under the following weblink: <http://sedac.ciesin.columbia.edu/gpw> (date of download:

5 April 2012). Furthermore we thank the CRAN-R-project for providing the open-source software package R: R Development Core Team (2011). R: a language and environment for statistical computing. R foundation for statistical computing, Vienna, Austria. ISBN 3-900051-07-0, URL <http://www.R-project.org/>. We thank the German Weather Service (DWD) for the wind gust data. Finally we are grateful to Julia Mömken for the CWT computations and Mark Reyers for discussions.

References

- Aon Benfield: Winterstürme in Europa – Historie von 1703 bis 2012, Veröffentlichung der Aon Benfield Analytics, Hamburg, 43 pp., available upon request from P. Behboud (parwiz.behoud@aonbenfield.com), 2013.
- Born, K., Ludwig, P., and Pinto, J. G.: Wind gust estimation for Mid-European winter storms: towards a probabilistic view, *Tellus A*, 64, 17471, doi:10.3402/tellusa.v64i0.17471, 2012.
- Bjerknes, J. and Solberg, H.: Life cycle of cyclones and the polar front theory of atmospheric circulation, *Geophys. Publ.*, 3, 3–18, 1922.
- Dee, D. P., Uppala, S. M., Simmons, A. J., Berrisford, P., Poli, P., Kobayashi, S., Andrae, U., Balmaseda, M. A., Balsamo, G., Bauer, P., Bechtold, P., Beljaars, A. C. M., van de Berg, L., Bidlot, J., Bormann, N., Delsol, C., Dragani, R., Fuentes, M., Geer, A. J., Haimberger, L., Healy, S. B., Hersbach, H., Hólm, E. V., Isaksen, L., K Kållberg, P., Köhler, M., Matricardi, M., McNally, A. P., Monge-Sanz, B. M., Morcrette, J.-J., Park, B.-K., Peubey, C., de Rosnay, P., Tavolato, C., Thépaut, J.-N., and Vitart, F.: The ERA-Interim reanalysis: configuration and performance of the data assimilation system, *Q. J. Roy. Meteor. Soc.*, 137, 553–597, doi:10.1002/qj.828, 2011.
- Della-Marta, P. M., Mathis, H., Frei, C., Liniger, M. A., Kleinn, J., and Appenzeller, C.: The return period of wind storms over Europe, 29, 437–459, doi:10.1002/joc.1794, 2009.
- Donat, M. G., Leckebusch, G. C., Pinto, J. G., and Ulbrich, U.: Examination of wind storms over Central Europe with respect to Circulation Weather Types and NAO phases, *Int. J. Climatol.*, 30, 1289–1300, doi:10.1002/joc.1982, 2010.
- Donat, M. G., Pardowitz, T., Leckebusch, G. C., Ulbrich, U., and Burghoff, O.: High-resolution refinement of a storm loss model and estimation of return periods of loss-intensive storms

NHESSD

2, 1913–1943, 2014

On the clustering of winter storm loss events over Germany

M. K. Karremann et al.

Title Page

Abstract

Introduction

Conclusions

References

Tables

Figures

◀

▶

◀

▶

Back

Close

Full Screen / Esc

Printer-friendly Version

Interactive Discussion



On the clustering of winter storm loss events over Germany

M. K. Karremann et al.

Title Page

Abstract

Introduction

Conclusions

References

Tables

Figures

◀

▶

◀

▶

Back

Close

Full Screen / Esc

Printer-friendly Version

Interactive Discussion



over Germany, *Nat. Hazards Earth Syst. Sci.*, 11, 2821–2833, doi:10.5194/nhess-11-2821-2011, 2011.

Emanuel, K. and Jagger, T.: On Estimating Hurricane Return Periods, *J. Appl. Meteorol. Clim.*, 49, 837–844, doi:10.1175/2009JAMC2236.1, 2010.

5 GDV: Statistical Yearbook of German Insurance 2012, available at: <http://www.gdv.de/2012/10/statisticalyearbook-of-german-insurance-2012/> (last access: 8 January 2014), 2012.

Gómara, I., Pinto, J. G., Woolings, T., Masato, G., Zurita-Gotor, P., and Rodriguez-Fonseca, B.: Rossby Wave-Breaking analysis of Explosive Cyclones in the Euro_Atlantic Sector, *Q. J. Roy. Meteor. Soc.*, doi:10.1002/qj.2190, published online, 2013.

10 Hanley, J. and Caballero, R.: Objective identification and tracking of multicentre cyclones in the ERA-Interim reanalysis dataset, *Q. J. Roy. Meteor. Soc.*, 138, 664, 612–625, doi:10.1002/qj.948, 2012.

Haylock, M. R.: European extra-tropical storm damage risk from a multi-model ensemble of dynamically-downscaled global climate models, *Nat. Hazards Earth Syst. Sci.*, 11, 2847–2857, doi:10.5194/nhess-11-2847-2011, 2011.

15 Held, H., Gerstengarbe, F. W., Pardowitz, T., Pinto, J. G., Ulbrich, U., Böhm, U., Born, K., Büchner, M., Donat, M. G., Karremann, M. K., Leckebusch, G. C., Ludwig, P., Nissen, K. M., Nocke, T., Osterle, H., Prah, B. F., Werner, P. C., Befort, B. J., and Burghoff, O.: Projections of global warming-induced impacts on winter storm losses in the German private household sector, *Climatic Change*, 121, 195–207, doi:10.1007/s10584-013-0872-7, 2013.

20 Jones, P. D., Hulme, M., and Briffa, K. R.: A comparison of lamb circulation types with an objective classification scheme, *Int. J. Climatol.*, 13, 655–663, doi:10.1002/joc.3370130606, 1993.

Jungclaus, J. H., Keenlyside, N., Botzet, M., Haak, H., Luo, J. J., Latif, M., Marotzke, J., Mikolajewicz, U., and Roeckner, E.: Ocean circulation and tropical variability in the coupled model ECHAM5/MPI-OM, *J. Climate*, 19, 3952–3972, doi:10.1175/JCL3827.1, 2006.

25 Kistler, R., Collins, W., Saha, Suranjana, White, G., Woollen, J., Kalnay, E., Chelliah, M., Ebisuzaki, W., Kanamitsu, M., Kousky, V., van den Dool, H., Jenne, R., and Fiorino, M.: The NCEP/NCAR 50 year reanalysis: monthly-means CD-ROM and documentation, *B. Am. Meteorol. Soc.*, 82, 247–267, doi:10.1175/1520-0477(2001)082, 2001.

30 Klawa, M. and Ulbrich, U.: A model for the estimation of storm losses and the identification of severe winter storms in Germany, *Nat. Hazards Earth Syst. Sci.*, 3, 725–732, doi:10.5194/nhess-3-725-2003, 2003.

On the clustering of winter storm loss events over Germany

M. K. Karremann et al.

Title Page

Abstract

Introduction

Conclusions

References

Tables

Figures

◀

▶

◀

▶

Back

Close

Full Screen / Esc

Printer-friendly Version

Interactive Discussion



- Lamb, H. H.: British Isles Weather Types and Register of the Daily Sequence of Circulation Patterns 1861–1971, Geophysical. Mem., 116, HMSO, London, 85.pp., 1972.
- Marsland, S. J., Haak, H., Jungclaus, J. H., Latif, M., and Röske, F.: The Max-Planck-Institute global ocean-sea ice model with orthogonal curvilinear coordinates, *Ocean Model.*, 5, 91–127, doi:10.1016/S1463-5003(02)00015-X, 2003.
- MunichRe: Winter storms in Europe. I I. Analysis of 1999 losses and loss potentials, Publication of Munich Re, available at: www.munichre.com, 2001.
- Mailier, P. J., Stephenson, D. B., Ferro, C. A. T., and Hodges, K. I.: Serial Clustering of Extratropical Cyclones, *Mon. Weather Rev.*, 134, 2224–2240, 2006.
- Palutikof, J. P. and Skellern, A. R.: Storm severity over Britain: a report to Commercial Union General Insurance, Climatic Research Unit, School of Environmental Science, University of East Anglia, Norwich (UK), 1991.
- Pinto, J. G., Fröhlich, E. L., Leckebusch, G. C., and Ulbrich, U.: Changing European storm loss potentials under modified climate conditions according to ensemble simulations of the ECHAM5/MPI-OM1 GCM, *Nat. Hazards Earth Syst. Sci.*, 7, 165–175, doi:10.5194/nhess-7-165-2007, 2007.
- Pinto, J. G., Neuhaus, C. P., Leckebusch, G. C., Reyers, M., and Kerschgens, M.: Estimation of wind storm impacts over West Germany under future climate conditions using a statistical-dynamical downscaling approach, *Tellus A*, 62, 188–201, doi:10.1111/j.1600-0870.2009.00424.x, 2010.
- Pinto, J. G., Karremann, M. K., Born, K., Della-Marta, P. M., and Klawa, M.: Loss potentials associated with European windstorms under future climate conditions, *Clim. Res.*, 54, 1–20, doi:10.3354/cr01111, 2012
- Pinto, J. G., Bellenbaum, N., Karremann, M. K., and Della-Marta, P. M.: Serial clustering of extratropical cyclones over the North Atlantic and Europe under recent and future climate conditions, *J. Geophys. Res.-Atmos.*, 118, 12476–12485, doi:10.1002/2013JD020564, 2013.
- Schwierz, C., Köllner-Heck, P., Zenklusen Mutter, E., Bresch, D. N., Vidale, P. L., Wild, M., and Schär, C.: Modelling European winter wind storm losses in current and future climate, *Climatic Change*, 101, 485–514, doi:10.1007/s10584-009-9712-1, 2010.
- Sillmann, J. and Croci-Maspoli, M.: present and future atmospheric blocking and its impact on European mean and extreme climate, *Geophys. Res. Lett.*, 36, L10702, doi:10.1029/2009GL038259, 2009.

On the clustering of winter storm loss events over Germany

M. K. Karremann et al.

Title Page

Abstract

Introduction

Conclusions

References

Tables

Figures

⏪

⏩

◀

▶

Back

Close

Full Screen / Esc

Printer-friendly Version

Interactive Discussion



Sterl, A., Severijns, C. Dijkstra, H., Hazeleger, W., van Oldenborgh, G. J., van den Broeke, M., Burgers, G., van den Hurk, B., van Leeuwen, P. J., and van Velthoven, P.: When can we expect extremely high surface temperatures?, *Geophys. Res. Lett.*, 35, L14703, doi:10.1029/2008GL034071, 2008.

5 Ulbrich, U., Fink, A. H., Klawa, M., and Pinto, J. G.: Three extreme storms over Europe in December 1999, *Weather*, 56, 70–80, doi:10.1002/j.1477-8696.2001.tb06540.x, 2001.

Vitolo, R., Stephenson, D. B., Cook, I. M., and Mitchell-Wallace, K.: Serial clustering of intense European storms, *Meteorol. Z.*, 18, 411–424, doi:10.1127/0941-2948/2009/0393, 2009.

10 Wilks, D. S.: *Statistical Methods in the Atmospheric Science*, 2nd Edn., International Geophysics Series, Burlington, USA, 627 pp., 2006.

Table 1. List of the identified top 30 events and corresponding return level for each event for NCEP, ERAI and DWD gust data. Dates are given as dd.mm.yyyy.

NCEP	Return Level	ERAI	Return Level	DWD	Return Level
15.12.1982	1	24.11.1981	2	18.01.1983	1
01.02.1983	2	16.12.1982	1	01.02.1983	1
27.11.1983	1	04.01.1983	1	27.11.1983	1
14.01.1984	5	18.01.1983	1	14.01.1984	1
24.11.1984	2	01.02.1983	2	24.11.1984	5
19.01.1986	2	13.01.1984	1	01.01.1986	1
20.10.1986	2	15.01.1984	1	20.10.1986	1
19.12.1986	2	24.11.1984	5	19.12.1986	2
25.01.1990	5	06.12.1985	1	25.01.1990	5
14.02.1990	1	20.01.1986	2	03.02.1990	2
26.02.1990	5	19.12.1986	2	08.02.1990	2
28.02.1990	5	25.01.1990	2	14.02.1990	1
13.01.1993	2	08.02.1990	1	26.02.1990	5
24.01.1993	2	26.02.1990	5	01.03.1990	5
09.12.1993	1	01.03.1990	5	21.03.1992	1
28.01.1994	2	14.01.1993	1	11.11.1992	1
22.01.1995	5	24.01.1993	5	26.11.1992	2
02.12.1999	1	09.12.1993	1	13.01.1993	1
26.12.1999	1	28.01.1994	2	24.01.1993	2
31.01.2000	1	23.01.1995	1	09.12.1993	2
28.01.2002	1	28.10.1998	1	28.01.1994	2
27.10.2002	2	03.12.1999	2	23.01.1995	1
02.01.2003	1	26.12.1999	5	26.01.1995	1
31.01.2004	1	29.01.2002	1	28.03.1997	1
20.03.2004	1	26.02.2002	1	03.12.1999	1
12.02.2005	1	28.10.2002	2	26.12.1999	2
16.12.2005	1	21.03.2004	1	27.10.2002	2
18.01.2007	5	18.01.2007	5	18.01.2007	5
01.03.2008	1	01.03.2008	2	01.03.2008	2
28.02.2010	1	28.02.2010	1	28.10.2010	1

On the clustering of winter storm loss events over Germany

M. K. Karremann et al.

Title Page

Abstract Introduction

Conclusions References

Tables Figures

◀ ▶

◀ ▶

Back Close

Full Screen / Esc

Printer-friendly Version

Interactive Discussion



On the clustering of winter storm loss events over Germany

M. K. Karremann et al.

Table 2. Estimated return periods for three different return levels (1, 2, 5 year) based on the Poisson distribution (Pois. RP), the empirical data for each dataset (eRP), and the negative Binomial distribution (Neg. Bin. RP; with uncertainty estimates*) for NCEP, ERAI and independent selected GCM samples (GCM: all runs, GCM_{corr}, 37 ESSENCE runs: ESS_{corr}, 3 20C runs from MPI: 20C_{corr}, PRE_{corr} from MPI, 3 CSMT runs from MPI: CSMT_{corr}; all runs indexed with corr are bias corrected based on CWTs) considering only the number of years available for each dataset respectively. The number of years is indicated below each dataset. For further details see Supplement B1.

Return Level	Pois. RP	ERAI	NCEP	GCM	ERAI	NCEP	GCM	GCM _{corr}	ESS _{corr}	20 C _{corr}	PRE _{corr}	
		30 yrs	30 yrs eRP	30 yrs	30 yrs	30 yrs	4092 yrs	4092 yrs Neg. Bin. RP	2360 yrs	720 yrs	505 yrs	
1 year Return Level												
Events per year	0	2.72	2.31	2.50	2.13	2.53 ± 1.54	2.49 ± 1.19	2.39 ± 0.11	2.35 ± 0.05	2.51 ± 0.09	2.4 ± 0.19	2.59 ± 0.26
	1	2.72	3.00	3.33	3.42	2.93 ± 1.54	2.98 ± 1.19	3.13 ± 0.11	3.2 ± 0.05	2.96 ± 0.09	3.11 ± 0.19	2.86 ± 0.26
	2	5.44	5.00	4.29	7.64	5.86 ± 3.6	5.96 ± 2.84	6.25 ± 0.29	6.39 ± 0.12	5.91 ± 0.2	6.21 ± 0.5	5.71 ± 0.58
	3	16	–	30.00	18.95	15 ± 19	15 ± 15	15 ± 1.4	15 ± 0.59	15 ± 1.05	15 ± 2.37	16 ± 3.20
	4	65	15	30	45	49 ± 89	46 ± 66	41 ± 6	40 ± 2	47 ± 5	42 ± 10	53 ± 16
	5	326	–	–	–	172 ± 419	155 ± 294	121 ± 23	110 ± 9	163 ± 22	124 ± 39	207 ± 85
2 year Return Level												
Events per year	0	1.65	1.58	1.58	1.54	1.62 ± 0.68	1.58 ± 0.09	1.57 ± 0.03	1.57 ± 0.02	1.60 ± 0.02	1.59 ± 0.02	1.62 ± 0.03
	1	3.3	3.00	3.75	4.07	3.5 ± 1.45	3.78 ± 0.22	3.81 ± 0.07	3.82 ± 0.05	3.62 ± 0.05	3.7 ± 0.05	3.47 ± 0.07
	2	13	30	15	13	13 ± 16	13 ± 2.25	13 ± 0.7	13 ± 0.51	13 ± 0.5	13 ± 0.5	13 ± 0.8
	3	79	30	30	51	65 ± 135	52 ± 15	51 ± 5	51 ± 3	58 ± 4	55 ± 3	65 ± 7
	4	633	–	–	–	388 ± 1132	229 ± 93	221 ± 28	218 ± 20	294 ± 28	254 ± 23	391 ± 56
5 year Return Level												
Events per year	0	1.22	1.15	1.15	1.21	1.2 ± 0.02	1.16 ± 0.03	1.21 ± 0.01	1.21 ± 0.01	1.22 ± 0.01	1.21 ± 0.01	1.22 ± 0.04
	1	6.11	7.50	10.00	6.60	7.45 ± 0.56	10.52 ± 1.06	6.74 ± 0.1	6.59 ± 0.05	6.38 ± 0.27	6.6 ± 0.23	6.24 ± 0.76
	2	61	30	–	53	42 ± 7	38 ± 9	48 ± 2	50 ± 1	54 ± 5	50 ± 4	57 ± 16
	3	916	–	30	334	225 ± 59	112 ± 40	369 ± 19	432 ± 11	567 ± 85	425 ± 51	707 ± 300

* As the propagation of uncertainty for one event per year and 1 year return level is not possible to identify, the error bars are set to be the same as for zero events per year.

Title Page

Abstract Introduction

Conclusions References

Tables Figures

⏪ ⏩

◀ ▶

Back Close

Full Screen / Esc

Printer-friendly Version

Interactive Discussion



On the clustering of winter storm loss events over Germany

M. K. Karremann et al.

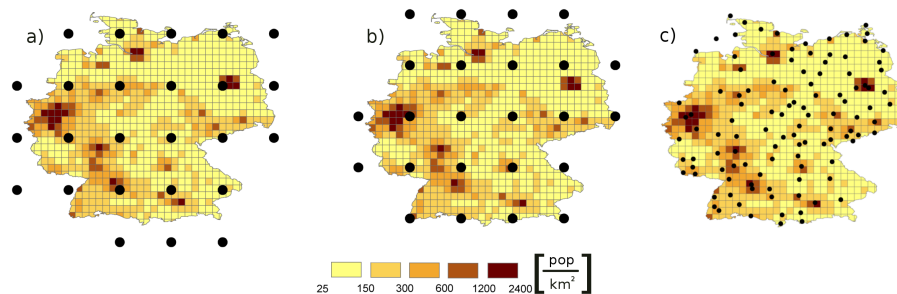


Fig. 1. (a) Location of reanalysis grid points (black) over and near Germany and population density (POP, colours) in number of inhabitants per km^2 per 0.25° grid cell; (b) same as (a) but for ECHAM5 GCM grid points; (c) same as (a) but for DWD stations. Only stations providing 80% of the wind gust records for the period 1981/1982 to 2010/2011 are considered (112 stations). For each 0.25° grid cell, the wind/gust is associated using the nearest neighbour method.

[Title Page](#)[Abstract](#)[Introduction](#)[Conclusions](#)[References](#)[Tables](#)[Figures](#)[◀](#)[▶](#)[◀](#)[▶](#)[Back](#)[Close](#)[Full Screen / Esc](#)[Printer-friendly Version](#)[Interactive Discussion](#)

On the clustering of winter storm loss events over Germany

M. K. Karremann et al.

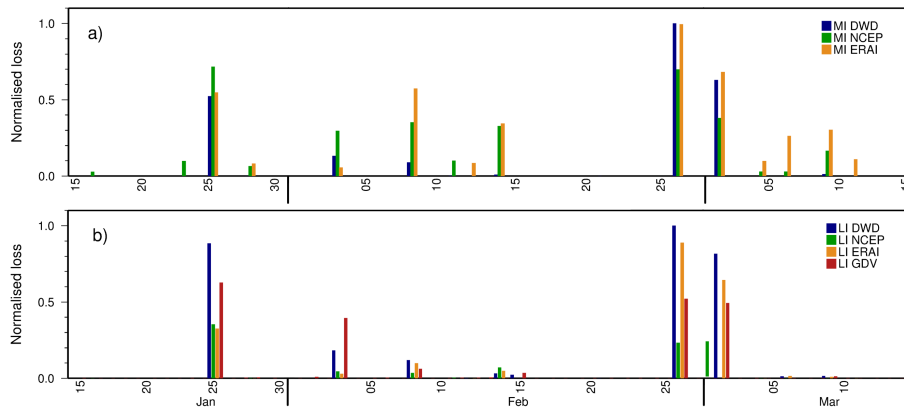


Fig. 2. Time series of three-day accumulated losses between 15 January and 15 March 1990. The values are normalised by the maximum accumulated loss of the period 1981/82 to 2010/11 for each dataset. **(a)** Comparison between MI derived DWD gust observations (blue), MI estimates based on NCEP (green) as well as MI obtained from ERAI (orange); **(b)** Same as **(a)** but for LI and additionally compared to simulated insurance data (GDV, red). Unlike MI, LI is population weighted.

Title Page

Abstract

Introduction

Conclusions

References

Tables

Figures

◀

▶

◀

▶

Back

Close

Full Screen / Esc

Printer-friendly Version

Interactive Discussion



On the clustering of winter storm loss events over Germany

M. K. Karremann et al.

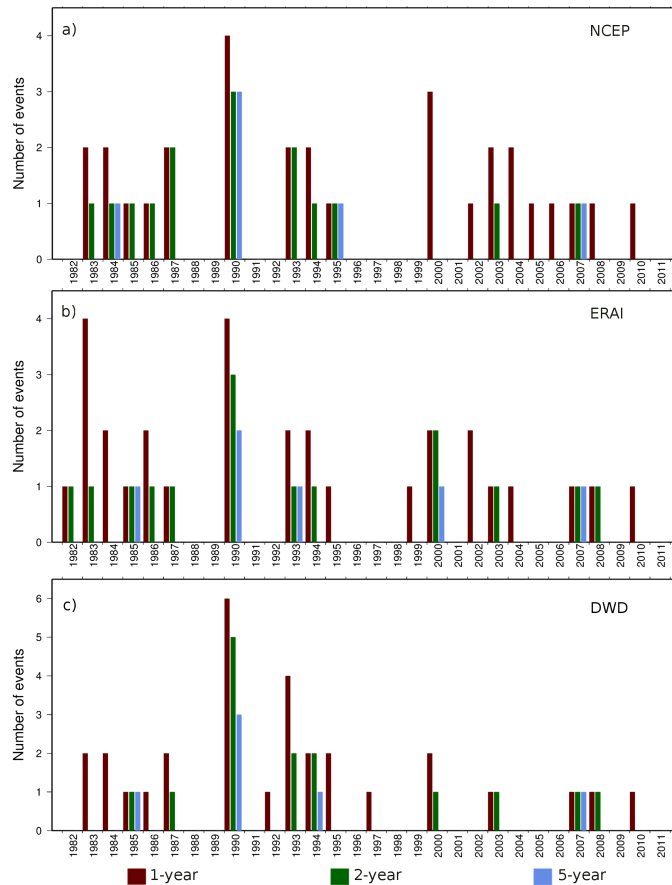


Fig. 3. Time series of the number of events per winter exceeding the 1 year return level (red), 2 year return level (green) and 5 year return level (blue) between 1981/1982 and 2010/2011. **(a)** LI estimated based on NCEP; **(b)** same as **(a)** but for ERAI; **(c)** same as **(a)** but for DWD gust. The indicated year corresponds to the second year of a winter (2000 indicates 1999/2000).

On the clustering of winter storm loss events over Germany

M. K. Karremann et al.

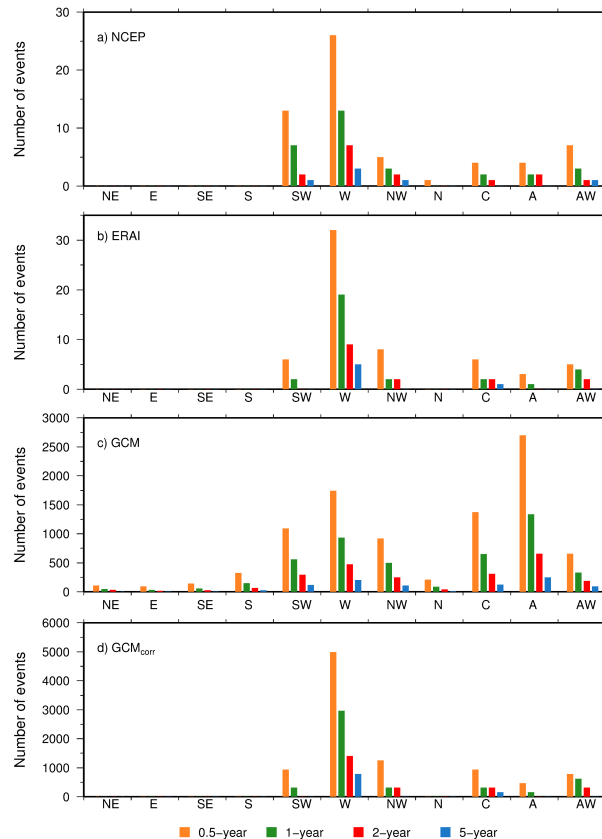


Fig. 4. (a) Distribution of events exceeding a certain return level depending on the CWT for LI NCEP. Colours denotes the different return level (0.5, 1, 2 and 5 year events); (b) same as (a) but for ERAI; (c) same as (a) but for the GCM ensemble; (d) same as (c) but for the corrected frequency of events per weather type based on ERAI. For (a) and (b) the total number of years is 30, for (c) and (d) it is 4092 years.

On the clustering of winter storm loss events over Germany

M. K. Karremann et al.

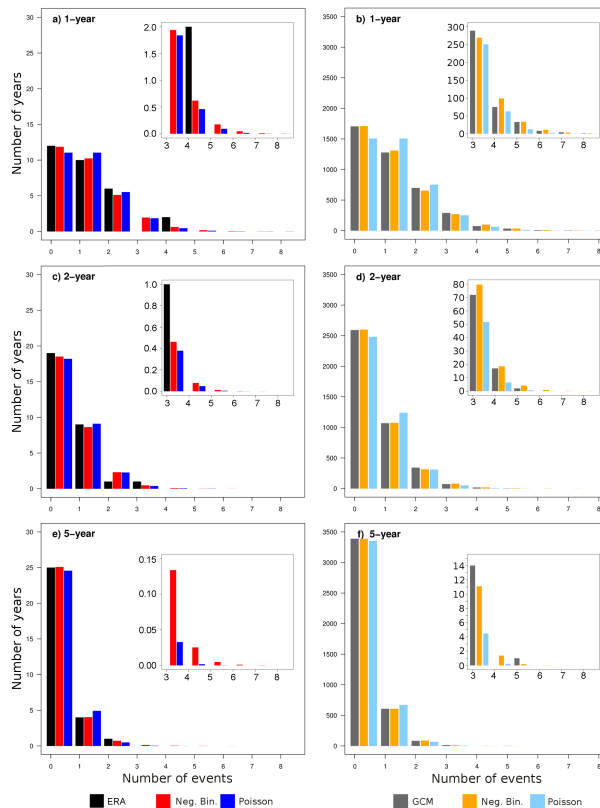


Fig. 5. Histograms of the number of years with a certain number of events for the empirical data (black/grey), the Poisson distribution (dark/light blue) and the fitted negative Binomial distribution (red/yellow). **(a)** Number of events exceeding the 1 year return level of ERAI; **(b)** same as **(a)** but for CGM data; **(c)** same as **(a)** but for 2 year return level events; **(d)** same as **(b)** for 2 year return level events; **(e)** same as **(a)** but for 5 year return level events; **(f)** as **(b)** but for 5 year return level events. For **(a)**, **(c)** and **(e)** the total number of years is 30, for **(b)**, **(d)** and **(f)** it is 4092.

[Title Page](#)
[Abstract](#)
[Introduction](#)
[Conclusions](#)
[References](#)
[Tables](#)
[Figures](#)
[⏪](#)
[⏩](#)
[◀](#)
[▶](#)
[Back](#)
[Close](#)
[Full Screen / Esc](#)
[Printer-friendly Version](#)
[Interactive Discussion](#)
