

Interactive
Comment

Interactive comment on “Recent human impacts and change in dynamics and morphology of ephemeral rivers” by J. A. Ortega et al.

J. A. Ortega et al.

j.ortega@uam.es

Received and published: 1 August 2013

First of all, we appreciate the valuable comments of two anonymous referees on the manuscript. We do coincide that some paper arguments resulted confusing and reit-erative and have restructured the manuscript and introduced most proposed changes. Although the new document content is inherently the same, we pursued to clarify unclear aspects that give a continuity line for discussion. Our aim was: -Redefine a common leitmotif throughout the paper that serves as attainments connection -Highlight essential paper arguments and enhance achievements -Remove certain aspects and references not directly necessary for discussion We agree to change the issues of the manuscript proposed on referee comments. The introduced changes are

Full Screen / Esc

Printer-friendly Version

Interactive Discussion

Discussion Paper

as follow (in blue, see suplement)

Please also note the supplement to this comment:

<http://www.nat-hazards-earth-syst-sci-discuss.net/1/C715/2013/nhessd-1-C715-2013-supplement.pdf>

Interactive comment on Nat. Hazards Earth Syst. Sci. Discuss., 1, 917, 2013.

NHESD

1, C715–C719, 2013

Interactive
Comment

Full Screen / Esc

Printer-friendly Version

Interactive Discussion

Discussion Paper



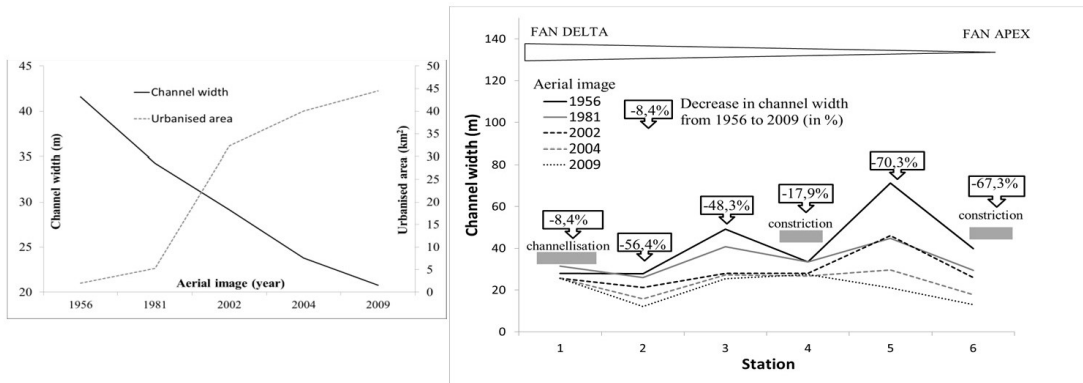


Fig. 1.

Full Screen / Esc

Printer-friendly Version

Interactive Discussion

Discussion Paper

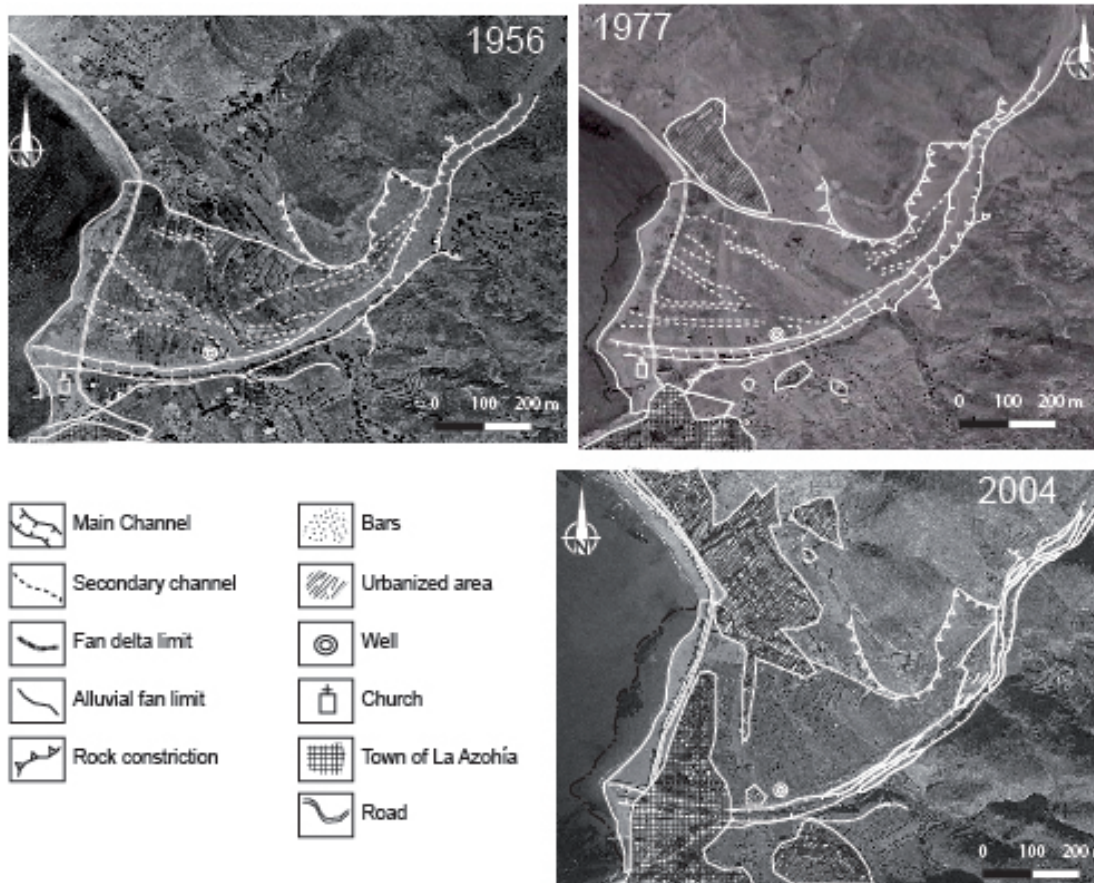


Fig. 2.

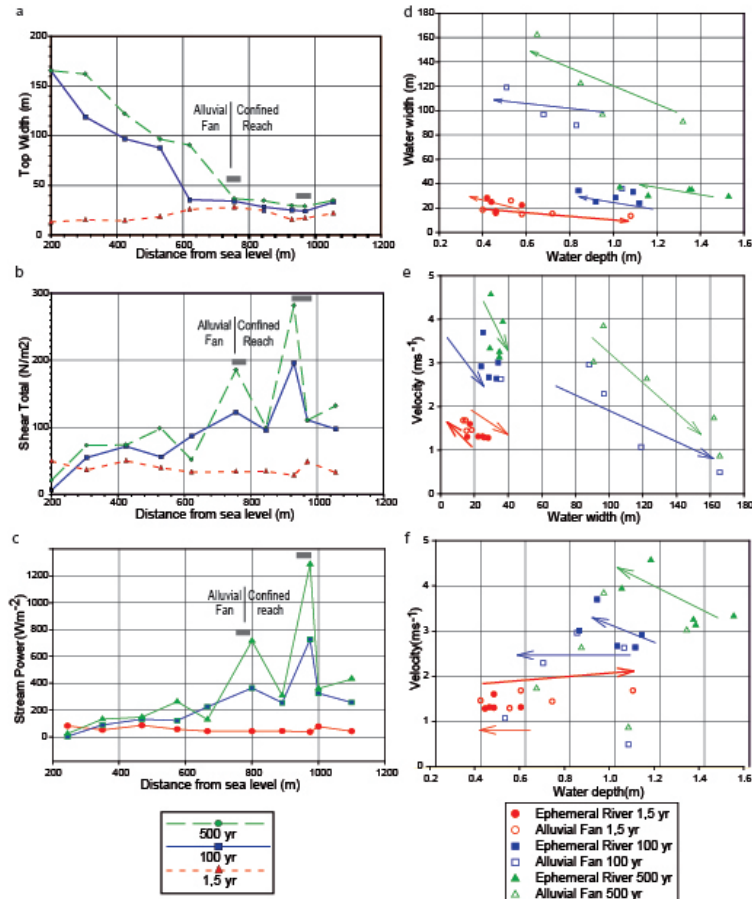


Fig. 3.