

***Interactive comment on “Assessment of tsunami hazard for the American Pacific coast from southern Mexico to northern Peru” by B. Brizuela et al.***

**B. Brizuela et al.**

beatriz.brizuela@ingv.it

Received and published: 2 April 2014

Dear Editor,

we would like to thank you and both referees for your evaluation and constructive comments to improve our manuscript. We have modified the paper trying to take into due account all comments and suggestions.

This resulted in many changes with respect to the original paper. A point-by-point answer to the referees' comments is provided here below.

Best regards,

C2925

Rome, 2nd April 2014

Beatriz Brizuela Alberto Armigliato Stefano Tinti

Please also note the supplement to this comment:

<http://www.nat-hazards-earth-syst-sci-discuss.net/1/C2925/2014/nhessd-1-C2925-2014-supplement.zip>

---

Interactive comment on Nat. Hazards Earth Syst. Sci. Discuss., 1, 2983, 2013.

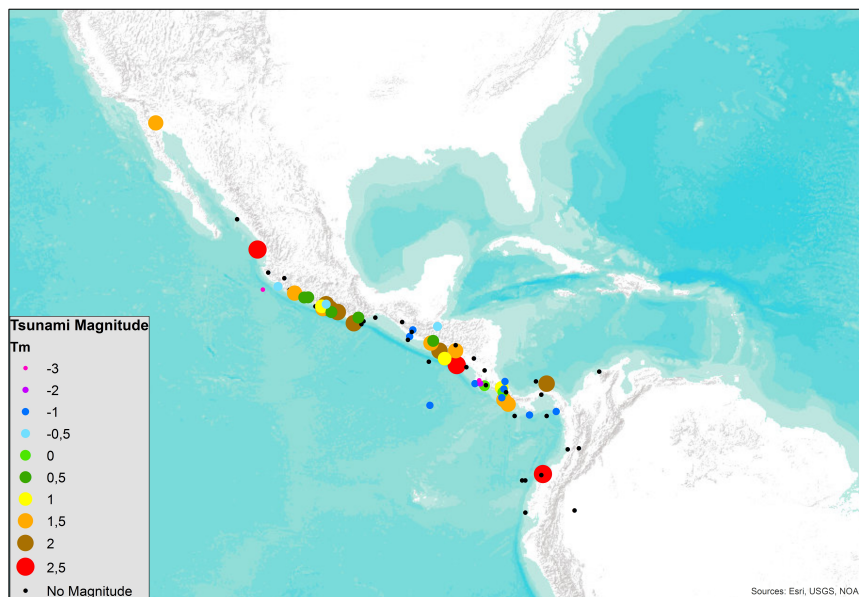


Fig. 1.

C2927

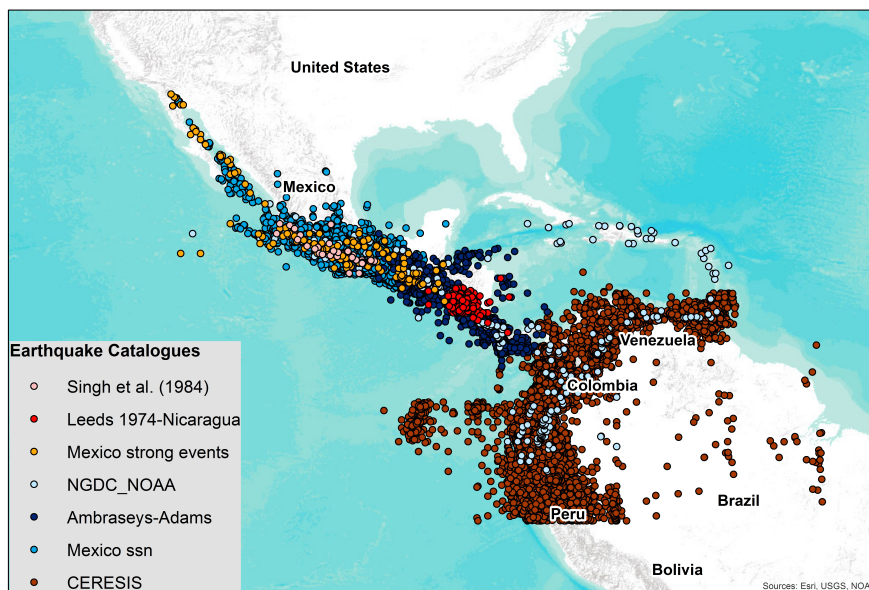


Fig. 2.

C2928

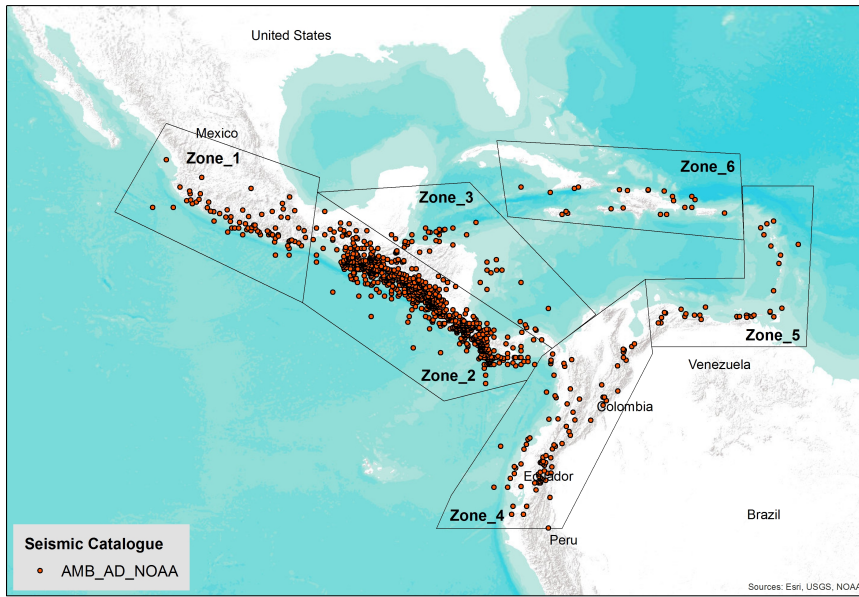


Fig. 3.

C2929

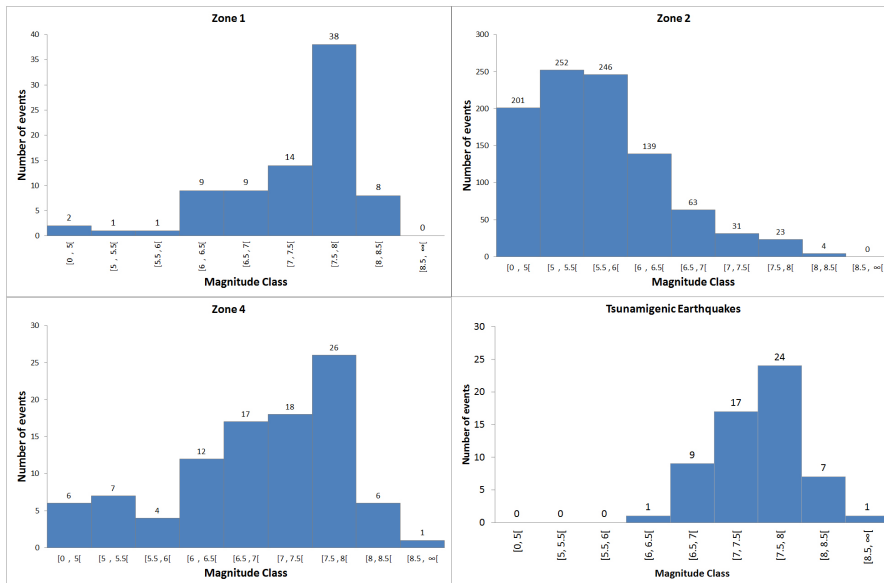


Fig. 4.

C2930

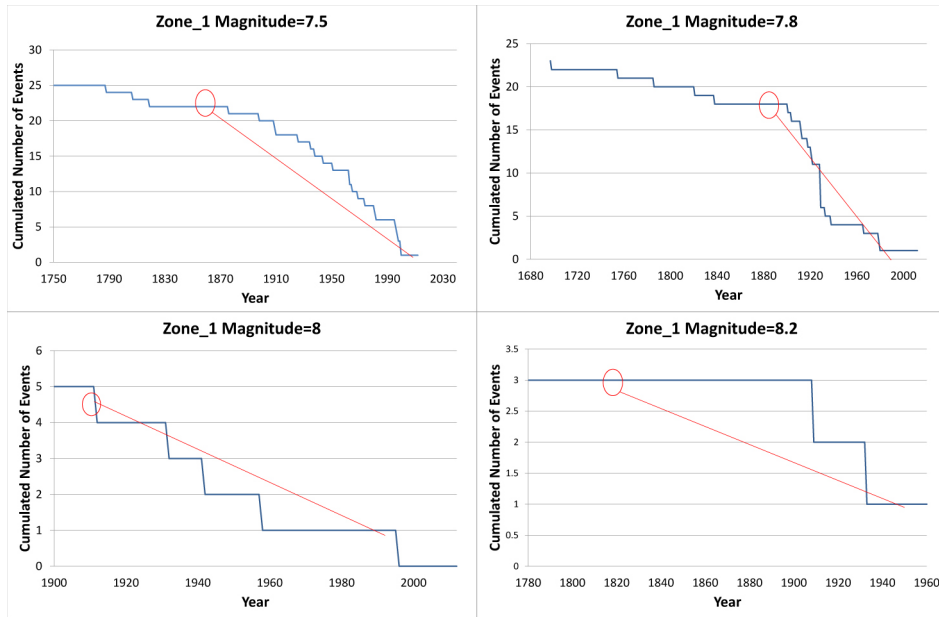


Fig. 5.

C2931

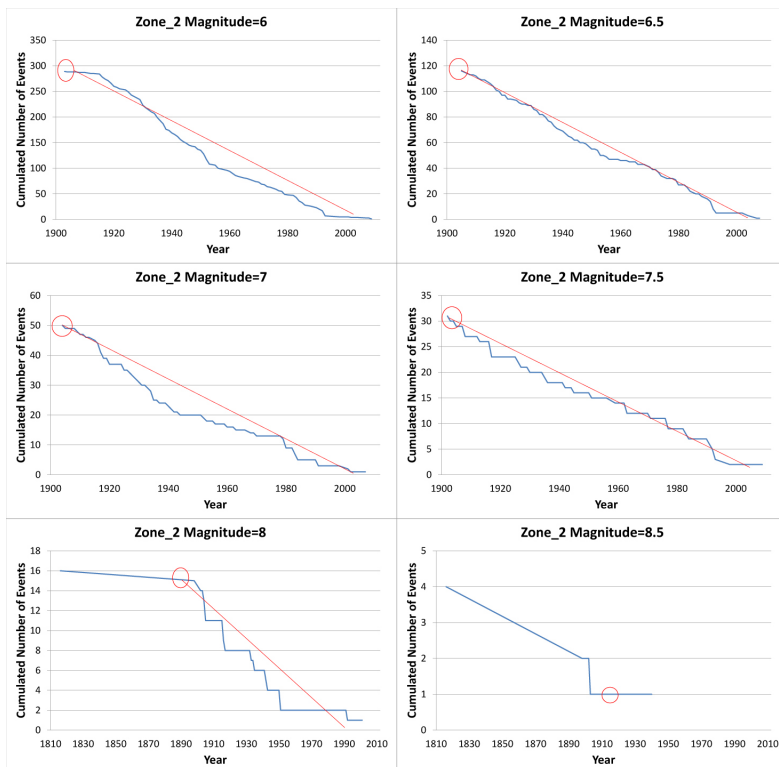


Fig. 6.

C2932

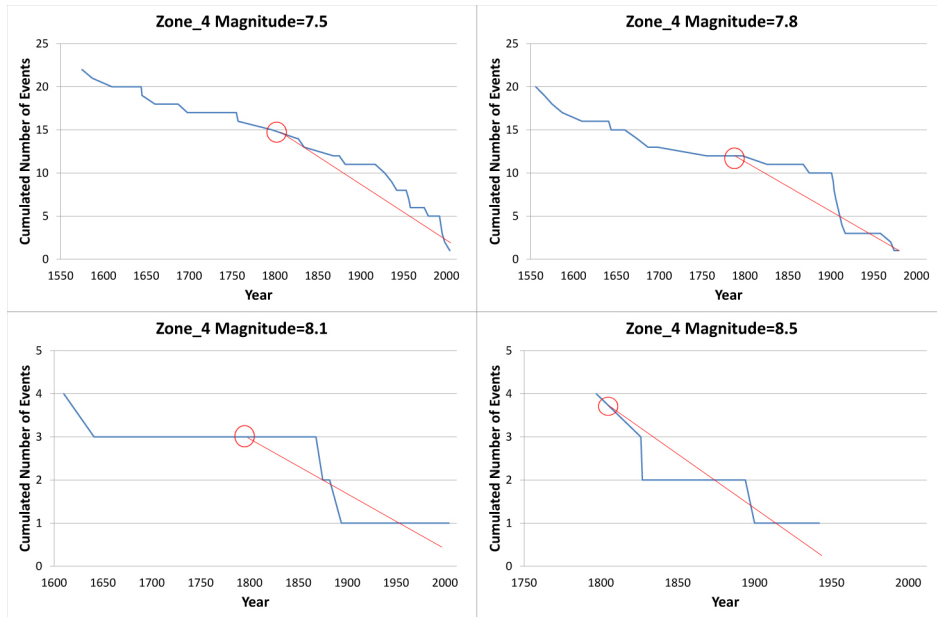


Fig. 7.

C2933

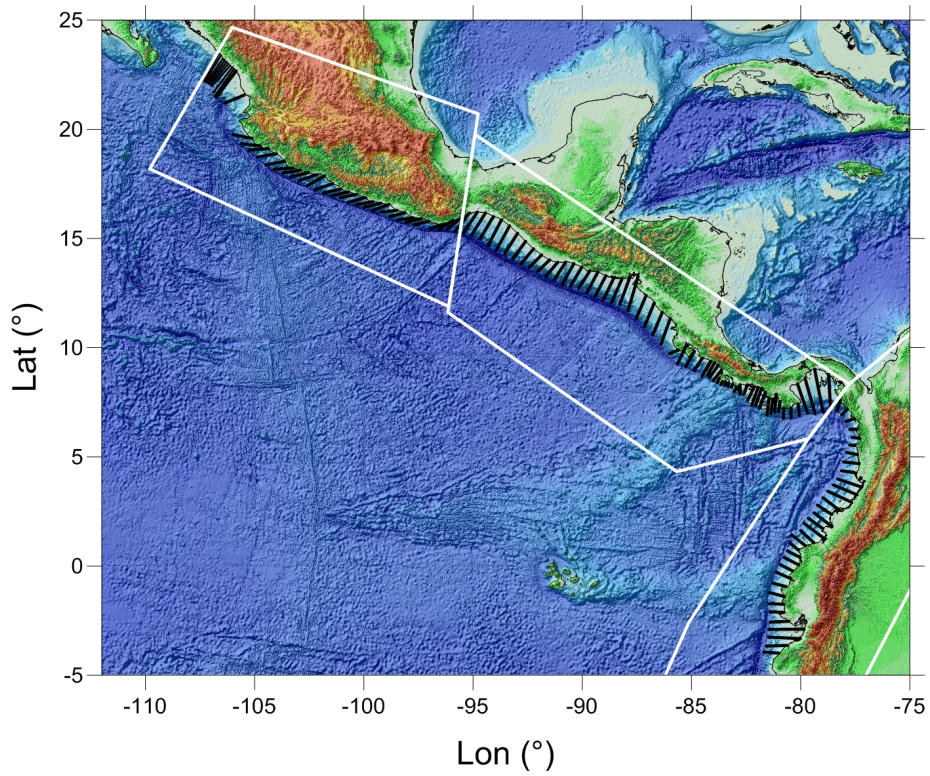


Fig. 8.

C2934

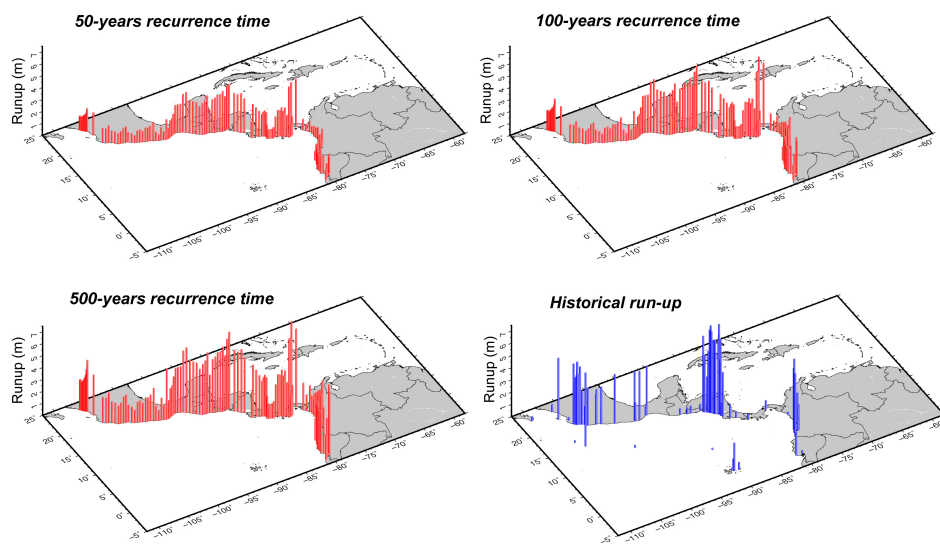


Fig. 9.

C2935

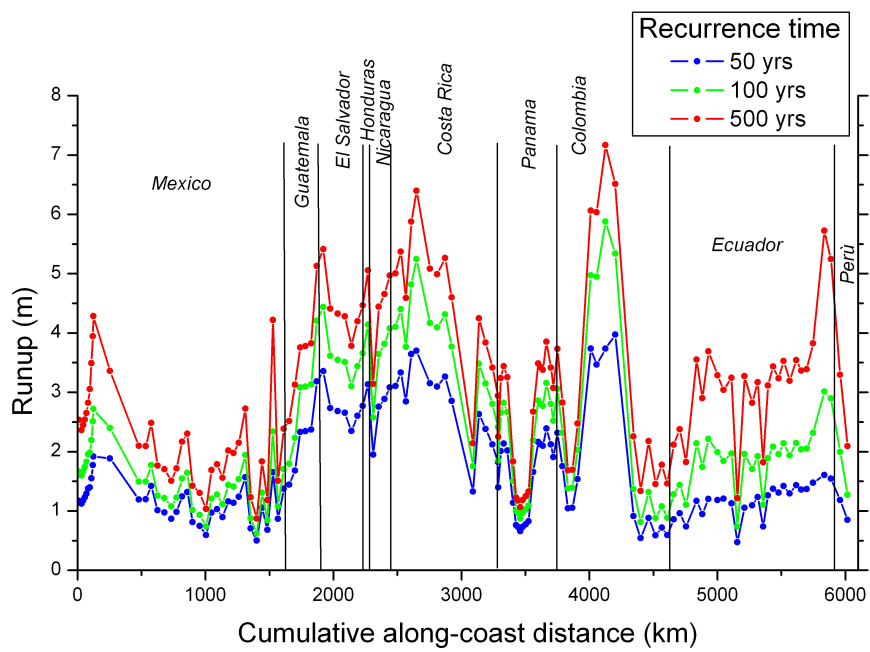


Fig. 10.

C2936