



Interactive
Comment

Interactive comment on “Landslide dynamics and coupling revealed by L-band InSAR in central Georgia” by E. Nikolaeva et al.

E. Nikolaeva et al.

elena@gfz-potsdam.de

Received and published: 11 November 2013

We revised sentence P4935, L2 to ‘The dislocation plane we used has 8 unknowns: length, width, depth, two-dimensional position, dip and strike angles, and dip-slip dislocation components.’ We changed word ‘Deep’ to ‘Depth’ in Table 1.

We revised and improved Figure 8 in our manuscript. We improved the color bar with data (InSAR observations, models and residuals).

Interactive comment on Nat. Hazards Earth Syst. Sci. Discuss., 1, 4925, 2013.

Full Screen / Esc

Printer-friendly Version

Interactive Discussion

Discussion Paper



Interactive
Comment

Full Screen / Esc

Printer-friendly Version

Interactive Discussion

Discussion Paper

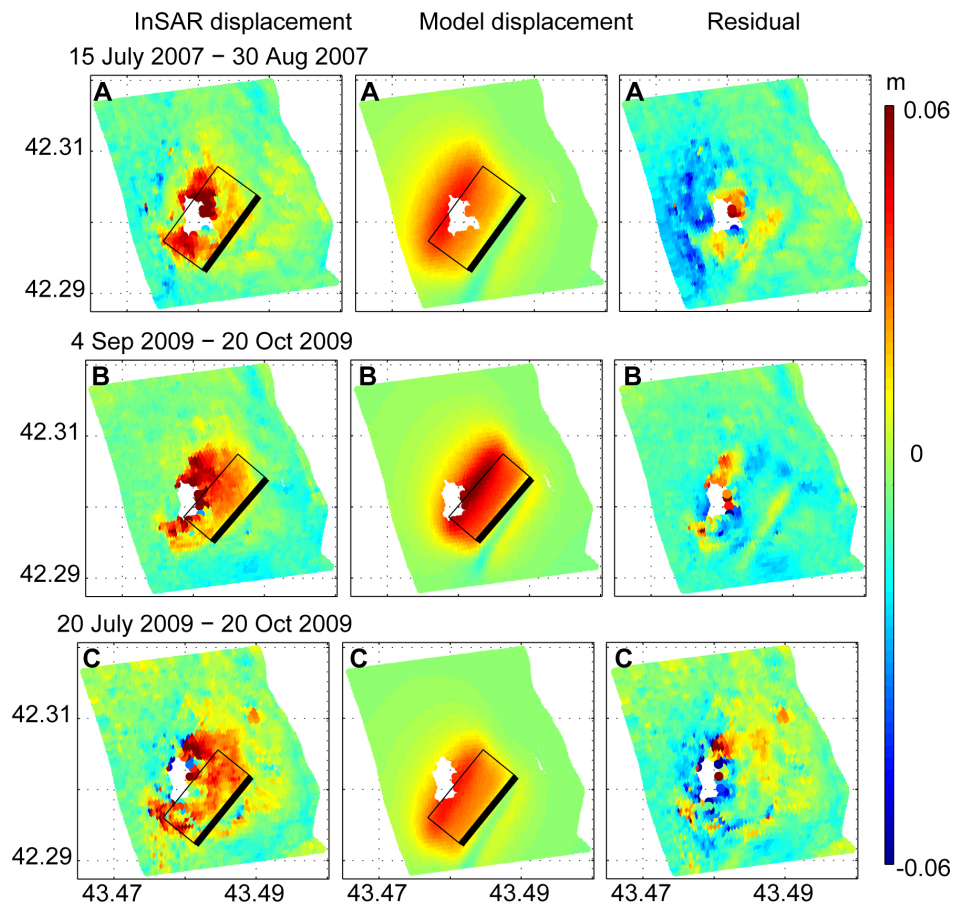


Fig. 1.