

This discussion paper is/has been under review for the journal Natural Hazards and Earth System Sciences (NHESS). Please refer to the corresponding final paper in NHESS if available.

# Trends and variability in extreme precipitation indices over Maghreb countries

Y. Trambly<sup>1</sup>, S. El Adlouni<sup>2</sup>, and E. Servat<sup>1</sup>

<sup>1</sup>IRD – Hydrosociences Montpellier, UMR5569, Montpellier, France

<sup>2</sup>Université de Moncton, Département de Mathématique et Statistique, Moncton, NB, Canada

Received: 2 May 2013 – Accepted: 5 July 2013 – Published: 26 July 2013

Correspondence to: Y. Trambly (yves.trambly@ird.fr)

Published by Copernicus Publications on behalf of the European Geosciences Union.

3625

## Abstract

Maghreb countries located in North Africa are highly vulnerable to extreme hydrological events, such as floods and droughts, driven by the strong variability of precipitation. While several studies have analyzed the presence of trends in precipitation records for the Euro-Mediterranean Basin, this study provides the first regional assessment of trends on its southernmost shores. A database of 22 stations located in Algeria, Morocco and Tunisia with between 33 and 59 yr of daily precipitation records is considered. The change points and trends are analyzed for eleven climate indices describing several features of the precipitation regime. The issue of conducting multiple hypothesis tests is addressed through the implementation of a false discovery rate procedure. The spatial and inter-annual variability of the precipitation indices at the different stations are analyzed and compared with large scale atmospheric circulation patterns, including the North Atlantic Oscillation (NAO), Western Mediterranean Oscillation (WEMO), Mediterranean Oscillation (MO) and El Niño Southern Oscillation (ENSO). Results show a strong tendency towards a decrease of precipitation totals and wet days together with an increase in the duration of dry periods, mainly for Morocco and western Algeria. On the opposite, only a few significant trends are detected for heavy precipitation indices. The NAO and MO patterns are well correlated with precipitation indices describing precipitation amounts, the number of dry days and the length of wet and dry periods, whereas heavy precipitation indices exhibit a strong spatial variability and are only moderately correlated with large scale atmospheric circulation patterns.

## 1 Introduction

Maghreb countries (Algeria, Morocco and Tunisia) in Northern Africa are vulnerable to extreme hydrological events such as floods and droughts. Like other Mediterranean countries they are prone to violent flood episodes caused by torrential rainfall, usually

3626

catastrophic with a very high number of casualties (Llasat et al., 2010). The deadliest events that occurred in the three countries during the last 50 yr were the 2001 flood near Algiers (Algeria) that caused more than 700 fatalities (Argence et al., 2008), the 1969 floods in the region of Kairouan (Tunisia), with between 150 and 400 fatalities (Poncet, 1970; Guillaud and Trabelsi, 1991) and the 1995 flood in the Ourika valley (Morocco) with over than 200 fatalities (Saidi et al., 2003). On the opposite, the strong inter-annual variability of precipitation, which is one of the most important feature of the Mediterranean climate (Lionello, 2012), is also causing dry spells of varying length threatening the water resources in these countries. Since the last two decades, there is a growing awareness about these extreme events (Bouaicha and Benabdelfadel 2010), and a questioning about the possible increase in their intensity or occurrence (Douglas et al., 2008). In particular for floods, as a significant increase in the vulnerability of the populations was observed in Maghreb countries during the last decades (Fig. 1), similar to what observed in the whole African continent by Di Baldassarre et al. (2010).

In the Maghreb region, there is limited data coverage and most of the rivers are regulated for either water resources or flood protection. Therefore, daily precipitation data is an interesting proxy to analyze long terms trends and variability of precipitation that are causing floods or drought periods. Several studies have analyzed the regional precipitation trends in large datasets over Europe (Moberg and Jones, 2005), West Africa (Servat et al., 1999) or South Africa (New et al., 2006) during the last decades. However no such regional trend analysis exists for North Africa, yet one of the most vulnerable regions of the Mediterranean Basin (Schilling et al., 2012). Previous research on precipitation in Maghreb countries has mainly focused on the inter-annual variability and the relationships with large-scale circulation such as the North Atlantic Oscillation (NAO) or El Niño Southern Oscillation (ENSO), for water resource management purposes (El Hamly and Sebbari, 1998; Kingumbi et al., 2005; Knippertz et al., 2003; Driouech et al., 2010; Mebarki, 2010; Meddi et al., 2010; Ouachani et al., 2013). Indeed, several studies have shown that precipitation in the Mediterranean Basin is influenced by local characteristics, such as elevation and

3627

topography (Hidalgo-Muñoz et al., 2011; Acero et al., 2011; Lionello, 2012), but also by large scale circulation such as the NAO (Xoplaki et al., 2004; Mariotti and Dell'Aquila, 2012; Angulo-Martínez and Beguería, 2012), the MO (Conte et al., 1989), the WEMO (Martín-Vide and Lopez-Bustins, 2006) and ENSO (Meddi et al., 2010; Ouachani et al., 2013). Meddi et al. (2010) observed a decrease in precipitation totals in northwest Algeria after 1970 related to the ENSO index. In Morocco, very dry years have been also observed after 1970, in relation with positive NAO anomalies (El Hamly et al., 1998; Knippertz et al., 2003). Trambly et al. (2012) noted the absence of trends in annual maximum precipitation in Morocco and the dependence of annual maximum precipitation in some stations with the NAO and Mediterranean Oscillation (MO) indexes. In Tunisia Kingumbi et al. (2005) reported a reduction of annual rainfall between 1976 and 1989 and Ouachani et al. (2013) observed a link between precipitation variability and the ENSO index.

For the Mediterranean Basin, several studies observed an increase in the occurrence and the severity of droughts (Sousa et al., 2011; Hoerling et al., 2012). However in the western part of the Mediterranean Basin, precipitations do not show a homogeneous tendency in the last decades. Alpert et al. (2002) reported an increase in heavy precipitation in Italy and Spain but Toreti et al. (2010) observed for six locations in France, Italy, Greece, and Cyprus a negative trend towards a decrease of the number of heavy precipitation events. Reiser and Kutiel (2010) found no significant trends in precipitation indices in 40 sites across the Mediterranean Basin, with the notable exception of Algier (Algeria) where they observed a decrease in the number of rain spells and total precipitation. In Spain, several studies observed a general decrease in annual precipitation, in the number of rainy days, precipitation intensity and an increase in the duration of dry spells. On the contrary, the frequency of heavy rainfall events and their contribution to annual precipitation events did not change at most observatories, or showed a decreasing trend (Lopez-Moreno et al., 2010; Rodrigo, 2010; Gallego et al., 2011). However, Hidalgo-Muñoz et al. (2010) and Acero et al. (2011) reported positive trends in the heavy rainfall event's magnitude over the south-eastern Mediterranean

3628

coast, corresponding to the region of Andalusia. In Italy, Brunetti et al. (2004) reported a decrease in wet days associated with an increase in precipitation intensity and Bonaccorso et al. (2005) or Caloiero et al. (2011) observed in southern Italy negative trends in winter rainfall amounts and in annual maximum daily precipitation. In the south of Portugal, Costa and Soares (2009) noted an increase in the length of dry spells but no significant trends in heavy precipitation. Similarly, in southern France Pujol et al. (2007) or Trambly et al. (2013) did not detect changes or trends in heavy rainfall events during the last 50 yr.

The main objective of this study is to analyze the trends in precipitation during the last 50 yr, with a focus on extreme dry and wet events, in long time series of precipitation in Maghreb countries. It is necessary to distinguish the possible climate change signal from the observed increased vulnerability, in order to improve the mitigation and adaptation strategies. In addition to the trend detection, the dependence of different precipitation characteristics with large scale atmospheric circulation is also analyzed, in an attempt to characterize their variability. The two main questions addressed by this study are: (i) is the stationary hypothesis valid on the long term for different precipitations indices? and (ii) can the observed interannual variability be explained by large scale circulation, such as the NAO, WEMO, MO or ENSO? The trend analysis and the dependences with large scale atmospheric circulation are investigated using robust statistics, taking into account the serial and cross correlations in the dataset and also the issue of repeating multiple statistical tests. The following section describes the different datasets considered for this study. The Sect. 3 details the statistical tests applied to the precipitation data and the Sect. 4 presents the results.

## 2 Study area and datasets

In the present study are considered the long daily precipitation series maintained by the governmental hydrological services of Algeria, Morocco and Tunisia, who are in charge of dams and all the water regulation structures (Fig. 2). The precipitation

3629

data have been provided by the hydrological services of Algeria (Agence Nationale des Ressources Hydrauliques, ANRH), Morocco (Direction de la Recherche et de la Planification de l'Eau, DRPE), and Tunisia (Direction Générale des Ressources en Eau, DGRE). The longest data series available between 1950 and 2009 have been provided; these stations are usually located near dams, reservoirs, or other water regulation structures. They are routinely used to estimate the return levels for extreme precipitation as well as to evaluate the inter-annual water resources availability. The daily data from the Melilla station (Spain) located in North Morocco was downloaded from ECA&D, the data and metadata is available at <http://eca.knmi.nl>.

The raw data record went under a data quality control procedure, to check for missing data records and measurements errors such as the reporting of unfeasible precipitation values. Each station data has been carefully manually scrutinized, in particular to look for obvious breaks, absurd values and missing data by visual inspection. The stations that were subsequently selected did not have more than 5% missing days between September and May. The years with more than 5% missing days during this period have been removed. In the whole area, there is a strong seasonality signal with most of the precipitation during late fall and winter. The summer months of June, July and August are not considered in the analysis since there is almost no precipitation during these months in all the stations and they have a very large number of missing data. After this quality check, 22 stations were selected in the three countries (Table 1). The median length of records is 45 yr, with complete data in almost all of the stations between 1970 and 2002 (Fig. 3). Most stations are located in the northern part of Africa, the rainiest and most populated area. As shown on the map of flood events together with the stations (Fig. 2), this is the area where several major flood events have been reported between 1984 and 2012. Therefore it is important to assess the stationarity of precipitation extremes over time, a feature that is very important and useful for water resources management.

In addition, different climatic indexes have been considered in an attempt to explain the observed interannual variability of precipitation. They include the NAO (Hurrell,







at the 5 % significance level in every station, with an average value  $\rho = 0.58$  (with minimum and maximum values respectively of 0.36 and 0.86). The correlation coefficient is itself an inverse function of the mean annual precipitation, with highest values for stations with low annual precipitation. For the most arid stations where the mean annual precipitation is below 200 mm (Gabes and Gafsa), the annual maximum daily precipitation can represent up to 25 % of the annual precipitation totals. When considering the fraction of the annual total precipitation above the 95th percentile, this ratio rises up to 58 % of the annual totals. The same ratio was observed by Toreti et al. (2010) in the Euro-Mediterranean region.

#### 4.2 Change points and trends

The presence of change points, indicating possible homogeneity breaks, has been tested with the Pettitt test. A special focus is put on the PRCPTOT and R1 mm indices, since they are often used to check the homogeneity of precipitation data (Wijngaard et al., 2003). In cases when both a significant monotonic trend and a change point are detected, the Pettitt test is applied on the detrended series, since the presence of a monotonic trend could lead to the false detection of a change point. To remove the trends, the least-squares fit of a straight line to the data is computed and the resulting function is subtracted from the data. For PRCPTOT and R1 mm this procedure has been applied to the stations of Rechaiga, Ponteba Bab Ouender, Beni Mellal, El Kansera and Larache where a monotonic trend was present. For the two indices, the smallest local  $p$  value (0.05) is obtained for R1 mm at the Berkane station, yet non significant at the 5 % level. Therefore no significant change points are detected and the hypothesis of homogeneity is valid for all the stations selected. The same conclusion holds true for the other indices.

The trend test results are presented in Table 2, showing the Sen slope estimates for each station and each index, if local or global trends are significant. As expected by the FQR approach, there are fewer significant trends at the global significance level (in bold) than at the local significance level. There is a strong evidence of

3637

a global drying tendency in most of the stations. The trends are more pronounced in the western part of the study area, including Morocco and West Algeria (Fig. 6). The trend test results indicate an increase of the number of dry days (R1 mm), the duration of dry spells (CDD, CDDm) a decrease of precipitation totals (PRCPTOT) and of the duration of precipitation episodes (CWD, CWDm). In particular, field significant trends at the global level are identified for R1 mm in 9 stations, out of 11 with local significant trends, for CDDm in 8 stations and for PRCPTOT in 5 stations (Table 2). On the opposite, fewer significant trends are detected for heavy precipitation indices. However, in several stations there is a negative Sen slope for these indices, indicating a decrease in precipitation intensity (SDII), annual maximum precipitation (RX1day), in the 95th percentile of precipitation (Prec95p) and in the relative part of the heavy precipitation events in annual precipitation totals (R95pTOT). For the annual maximum precipitation, there is a significant trend towards a decrease only for the Rechaiga station (Table 2). Therefore, the hypothesis of stationarity for annual maximums is valid for most stations (Fig. 7). There are a few stations with a negative tendency in the probability of observing a heavy rainfall event (R95p), as observed in other parts of the Mediterranean Basin by Toreti et al. (2010). However the only station for which field significance at the 5 % level is achieved is Rechaiga. These trend results are consistent with those obtained in Algiers by Reiser and Kutiel (2010).

#### 4.3 Relationships with large scale circulation indices

The correlations between the different precipitation indices and the NAOi, WEMOI, MOi and MEi have been analyzed. The presence of trends may affect the correlation analysis and since the focus here is on the co-variability of the different precipitation and large scale circulation indices, the indices have been detrended if a significant trend was present. This is the case of the NAOi and MOi, which are showing a long-term positive trend in particular since the 1970s (Mariotti and Dell'Aquila, 2012). Different time aggregation periods for the computation of the climate indices have been tested. When considering annual averages of the large scale circulation indices (from

3638

September to August), almost no significant correlations with precipitation indices are found. The largest number of significant correlations is obtained when considering extended winter season (from November to March) averages of the NAOi, WEMOi, MOi and MEi. The results are presented in Fig. 8, showing for each precipitation indices the number of local and global significant correlations with the different climatic indices. The PRCPTOT and R1 mm indices and to a lesser extend SDII, CWD and CWDm, show significant correlations with NAOi and MOi. For PRCPTOT and R1 mm the correlations with NAOi or MOi are significant in almost half of the stations (Fig. 9), mostly in Morocco (Bab Ouender, Mjaara, Beni Mellal, El Kansera, Larache, Tanger stations), Algeria (Ponteba station) but also in Tunisia with the MOi (Jendouba, Tunis stations). On average, the mean Spearman correlation coefficient between PRCPTOT at the different stations and NAOi is equal to  $-0.51$  and  $-0.47$  with the MOi. For R1 mm, the average correlation coefficient with NAOi is  $-0.5$  and  $-0.48$  with MOi.

On the contrary, heavy precipitation indices such as RX1day, Prec95p or R95pTOT are not strongly correlated with large scale circulation indices. Only a few field-significant correlations with the NAOi are detected for these indices, mainly in Morocco (Larache, Mjaara, Bab Ouender). It must be noted that similar correlation results have been obtained when averaging the different atmospheric indices from November to March or from December to February, indicating the robustness of the signal during the extended winter season. Born et al. (2010) previously noted that large scale variability, caused by the NAO or ENSO, controls Moroccan rainfall variability towards a detectable but relatively small range. Thus, they concluded that one should not expect these indices to deliver sufficient results for an assessment of seasonal rainfall prediction. A reasonable part of rainfall variability remains stochastic and can only be assessed by applying more complex atmospheric climate or weather prediction models (Born et al., 2010).

3639

## 5 Conclusions

This study provides the first assessment of trends in precipitation indices at the regional scale over Maghreb countries. Several precipitation indices describing precipitation amounts, heavy rainfall, and the duration of dry and wet periods have been computed for 22 stations having long data records of daily precipitation. There is a strong temporal and spatial variability, in particular for the indices describing the heavy precipitation events. On the opposite, the indices representing precipitations amounts or dry periods, such as the number of dry days or the duration of dry spells, show a greater spatial consistency, indicating that droughts periods are simultaneously impacting large areas when they occur. The influence of autocorrelation is found to be limited in the present analysis but several indices show significant cross-correlations among stations indicating the need to assess the field significance of trend results. The trend analysis indicates an increase of the dry episodes duration and magnitude, together with a decrease in the number of wet days and annual precipitation. For the heavy precipitation events there is no such a strong signal towards a decrease or an increase, therefore the hypotheses of stationarity remain valid in most stations. These trends are significant at the regional scale and mostly affect Algeria and Northern Morocco, when only a few local trends are detected in Tunisia. The detected trends for northern Africa are consistent with those found in other studies across the Mediterranean region (Brunetti et al., 2004; Costa and Soares, 2009; Meddi et al., 2010; Reiser and Kutiel, 2010; Caloiero et al., 2011; Schilling et al., 2012).

The precipitation indices considered in this study only show a moderate correlation with the various large scale circulation indices considered. There is a dependence of annual precipitation or wet day's frequency with NAO and MO indices in almost half of the stations, but a very little correlation signal with the indices representing the heavy rainfall events magnitude or occurrence. Since heavy precipitation also exhibit a strong spatial variability among the different stations, it is hypothesized that these extreme events are more influenced by local climatic processes and topography. Although

3640



- Di Baldassarre, G., Montanari, A., Lins, H., Koutsoyiannis, D., Brandimarte, L., and Blöschl, G.: Flood fatalities in Africa: from diagnosis to mitigation, *Geophys. Res. Lett.*, 37, L22402, doi:10.1029/2010GL045467, 2010.
- Douglas, E. M., Vogel, R. M., and Kroll, C. N.: Trends in floods and low flows in the United States: impact of spatial correlation, *J. Hydrol.*, 240, 90–105, 2000.
- Douglas, I., Kurshid, A., Maghenda, M., McDonnell, Y., McLean, L., and Campbell, J.: Unjust waters: climate change, flooding and the urban poor in Africa, *Environ. Urban.*, 20, 187–205, 2008.
- Driouech, F., Déqué, M., and Sanchez-Gomez, E.: Weather regimes – Moroccan precipitation link in a regional climate change simulation, *Global Planet. Change*, 72, 1–10, 2010.
- El Hamly, M., Sebbari, R., Lamb, P., Ward, M. N., and Portis, D. H.: Towards the seasonal prediction of Moroccan precipitation and its implications for water resources management. Water resources variability in Africa during the XX century, in: *Proceeding of the Abidjan 98 Conference*, Abidjan, Cote D'Ivoire, 16 November 1998, IAHS Publ., 252, 79–87, 1998.
- Gallego, M. C., Trigo, R. M., Vaquero, J. M., Brunet, M., Garcia, J. A., Sigró, J., and Valente, M. A.: Trends in frequency indices of daily precipitation over the Iberian Peninsula during the last century, *J. Geophys. Res.*, 116, D02109, doi:10.1029/2010JD014255, 2011.
- Guillaud, C. and Trabelsi, M.: Gestion des ressources hydriques en Tunisie centrale: les projets Sidi Saad et El Haouareb hydrology for the water management of large river basins, in: *Proceedings of the Vienna Symposium*, August 1991, IAHS Publ., 201, 129–128, 1991 (in French).
- Hamed, K. H. and Rao, A. R.: A modified Mann–Kendall trend test for autocorrelated data, *J. Hydrol.*, 204, 182–196, doi:10.1016/S0022-1694(97)00125-X, 1998.
- Hidalgo-Muñoz, J. M., Argüeso, D., Gámiz-Fortis, S. R., Esteban-Parra, M. J., and Castro-Díez, Y.: Trends of extreme precipitation and associated synoptic patterns over the southern Iberian Peninsula, *J. Hydrol.*, 409, 497–511, 2011.
- Hoerling, M., Eischeid, J., Perlwitz, J., Quan, X., Zhang, T., and Pegion, P.: On the increased frequency of Mediterranean drought, *J. Climate*, 25, 2146–2161, 2012.
- Hurrell, J. W.: Decadal trends in the North Atlantic Oscillation: regional temperatures and precipitation, *Science*, 269, 676–679, 1995.
- Khaliq, M. N., Ouarda, T. B. M.J, Gachon, P., Sushama, L., and St-Hilaire, A.: Identification of hydrological trends in the presence of serial and cross correlations: a review of selected

3643

- methods and their application to annual flow regimes of Canadian rivers, *J. Hydrol.*, 368, 117–130, 2009.
- Klein Tank, A. M. G., Wijngaard, J. B., Können, G. P., Böhm, R., Demarée, G., Gocheva, A., Mileta, M., Pashiardis, S., Hejkrlik, L., Kern-Hansen, C., Heino, R., Bessemoulin, P., Müller-Westermeier, G., Tzanakou, M., Szalai, S., Pálsdóttir, T., Fitzgerald, D., Rubin, S., Capaldo, M., Maugeri, M., Leitass, A., Bukantis, A., Aberfeld, R., van Engelen, A. F. V., Forland, E., Mielus, M., Coelho, F., Mares, C., Razuvaev, V., Nieplova, E., Cegnar, T., Antonio López, J., Dahlström, B., Moberg, A., Kirchhofer, W., Ceylan, A., Pachaliuk, O., Alexander, L. V. and Petrovic, P.: Daily dataset of 20th-century surface air temperature and precipitation series for the European Climate Assessment, *Int. J. Climatol.*, 22, 1441–1453, doi:10.1002/joc.773, 2002.
- Kingumbi, A., Bargaoui, Z., and Hubert, P.: Investigation of the rainfall variability in central Tunisia, *Hydrolog. Sci. J.*, 50, 493–508, 2005.
- Knippertz, P., Christoph, M., and Speth, P.: Long-term precipitation variability in Morocco and the link to the large-scale circulation in recent and future climates, *Meteorol. Atmos. Phys.*, 83, 67–88, 2003.
- Lebel, T. and Laborde, J. P.: A geostatistical approach for areal rainfall statistics, *Stoch. Hydrol. Hydraul.*, 2, 245–261, 1988.
- Lionello, P. (Ed.): *The Climate of the Mediterranean Region, From the Past to the Future*, ISBN: 9780124160422, Elsevier, Amsterdam, the Netherlands, 2012.
- Livezey, R. E. and Chen, W. Y.: Statistical field significance and its determination by Monte Carlo techniques, *Mon. Weather Rev.*, 111, 46–59, 1983.
- Llasat, M. C., Llasat-Botija, M., Prat, M. A., Porcú, F., Price, C., Mugnai, A., Lagouvardos, K., Kotroni, V., Katsanos, D., Michaelides, S., Yair, Y., Savvidou, K., and Nicolaidis, K.: High-impact floods and flash floods in Mediterranean countries: the FLASH preliminary database, *Adv. Geosci.*, 23, 47–55, doi:10.5194/adgeo-23-47-2010, 2010.
- Lopez-Moreno, J. I., Vicente-Serrano, S. M., Angulo-Martínez, M., Beguería, S., and Kenawy, A.: Trends in daily precipitation on the northeastern Iberian Peninsula, *Int. J. Climatol.*, 30, 1026–1041, 2010.
- Mann, H. B.: Nonparametric tests against trend, *Econometrica*, 13, 245–259, 1945.
- Mariotti, A. and Dell'Aquila, A.: Decadal climate variability in the Mediterranean region: roles of large-scale forcings and regional processes, *Clim. Dynam.*, 38, 1129–1145, 2012.

3644

- Martín-Vide, J. and Lopez-Bustins, J. A.: The Western Mediterranean Oscillation and rainfall in the Iberian Peninsula, *Int. J. Climatol.*, 26, 1455–1475, 2006.
- Mebarki, A.: Apport des cours d'eau et cartographie du bilan hydrologique: cas des bassins de l'Algérie orientale, *Sécheresse*, 21, 301–308, 2010 (in French).
- 5 Meddi, M. M., Assani, A. A., and Meddi, H.: Temporal variability of annual rainfall in the Macta and Tafna catchments, Northwestern Algeria, *Water Resour. Manag.*, 24, 3817–3833, 2010.
- Moberg, A. and Jones, P. D.: Trends in indices for extremes in daily temperature and precipitation in central and western Europe, 1901–99, *Int. J. Climatol.*, 25, 1149–1171, 2005.
- New, M., Hewitson, B., Stephenson, D., Tsiga, A., Kruger, A., Manhique, A., Gomez, B., Coelho, C., Masisi, D. N., Kululunga, E., Mbambalala, E., Adesina, F., Saleh, H., Kanyanga, J., Adosi, J., Bulane, L., Fortunata, L., and La Joie, R.: Evidence of trends in daily climate extremes over Southern and West Africa, *J. Geophys. Res.*, 111, D14102, doi:10.1029/2005JD006289, 2006.
- 10 Ouachani, R., Bargaoui, Z., and Ouarda, T.: Power of teleconnection patterns on precipitation and streamflow variability of upper Medjerda Basin, *Int. J. Climatol.*, 33, 58–76, doi:10.1002/joc.3407, 2013.
- Palutikof, J. P.: Analysis of Mediterranean climate data: measured and modelled, in: *Mediterranean Climate-Variability and Trends*, edited by: Bolle, H. J., Springer-Verlag, Berlin, 133–153, 2003.
- 15 Pettitt, A. N.: A non-parametric approach to the change-point detection, *Appl. Stat.*, 28, 126–135, 1979.
- Poncet, J.: La “catastrophe” climatique de l'automne 1969 en Tunisie, *Ann. Geogr.*, 79, 581–595, 1970 (in French).
- Pujol, N., Neppel, L., and Sabatier, R.: Regional tests for trend detection in maximum precipitation series in the French Mediterranean region, *Hydrol. Sci. J.* 52, 956–973, 2007.
- 25 Reiser, H. and Kutiél, H.: Rainfall uncertainty in the Mediterranean: time series, uncertainty, and extreme events, *Theor. Appl. Climatol.*, 104, 357–375, doi:10.1007/s00704-010-0345-0, 2010.
- Renard, B., Lang, M., Bois, P., Dupeyrat, A., Mestre, O., Niel, H., Sauquet, E., Prudhomme, C., Parey, S., Paquet, E., Neppel, L., and Gailhard, J.: Regional methods for trend detection: assessing field significance and regional consistency, *Water Resour. Res.*, 44, W08419, doi:10.1029/2007WR006268, 2008.
- 30

3645

- Rodrigo, F. S.: Changes in the probability of extreme daily precipitation observed from 1951 to 2002 in the Iberian Peninsula, *Int. J. Climatol.*, 30, 1512–1525, 2010.
- Saidi, M. E. M., Daoudi, L., Aresmouk, M. E. H., and Blali, A.: Rôle du milieu physique dans l'amplification des crues en milieu montagne montagnard: exemple de la crue du 17 août 5 1995 dans la vallée de l'Ourika (Haut-Atlas, Maroc), *Sécheresse*, 14, 1–8, 2013 (in French).
- Schilling, J., Freier, K. P., Hertig, E., and Scheffran, J.: Climate change, vulnerability and adaptation in North Africa with focus on Morocco, *Agr. Ecosyst. Environ.*, 156, 12–26, 2012.
- Servat, E., Paturel, J. E., Lubès-Niel, H., Kouamé, B., Masson, J. M., Travaglio, M., and Marieu, B.: De différents aspects de la variabilité de la pluviométrie en Afrique de l'Ouest et Centrale non sahélienne, *Revue des Sciences de l'Eau*, 12, 363–387, 1999 (in French).
- 10 Sen, P. K.: Estimates of the regression coefficient based on Kendall's tau, *J. Am. Stat. Assoc.*, 63, 1379–1389, 1968.
- Sousa, P. M., Trigo, R. M., Aizpurua, P., Nieto, R., Gimeno, L., and Garcia-Herrera, R.: Trends and extremes of drought indices throughout the 20th century in the Mediterranean, *Nat. Hazards Earth Syst. Sci.*, 11, 33–51, doi:10.5194/nhess-11-33-2011, 2011.
- 15 Spearman, C.: The proof and measurement of association between two things, *Am. J. Psychol.*, 15, 72–101, 1904.
- Toreti, A., Xoplaki, E., Maraun, D., Kuglitsch, F. G., Wanner, H., and Luterbacher, J.: Characterisation of extreme winter precipitation in Mediterranean coastal sites and associated anomalous atmospheric circulation patterns, *Nat. Hazards Earth Syst. Sci.*, 10, 1037–1050, doi:10.5194/nhess-10-1037-2010, 2010.
- Tramblay, Y., Badi, W., Driouech, F., El Adlouni, S., Neppel, L., and Servat, E.: Climate change impacts on extreme precipitation in Morocco, *Global Planet. Change*, 82–83, 104–114, 2012.
- Tramblay, Y., Neppel, L., Carreau, J., and Najib, K.: Non-stationary frequency analysis of heavy rainfall events in southern France, *Hydrolog. Sci. J.*, 58, 1–15, 2013.
- 25 Ventura, V., Paciorek, C. J., and Risbey, J. S.: Controlling the proportion of falsely rejected hypotheses when conducting multiple tests with climatological data, *J. Climate*, 17, 4343–4356, 2004.
- Villarini, G., James, J. A., Ntelekos, A. A., and Schwarz, U.: Annual maximum and peak-over-threshold analyses of daily rainfall accumulations for Austria, *J. Geophys. Res.*, 116, D05103, doi:10.1029/2010jd015038, 2011.
- 30 Wijngaard, J. B., Klein Tank, A. M. G., and Können, G. P.: Homogeneity of 20th century European daily temperature and precipitation series, *Int. J. Climatol.*, 23, 679–692, 2003.

3646

- Wilks, D. S.: On “field significance” and the false discovery rate, *J. Appl. Meteorol. Clim.*, 45, 1181–1189, doi:10.1175/JAM2404.1, 2006.
- Wolter, K. and Timlin, M. S.: El Niño/Southern Oscillation behaviour since 1871 as diagnosed in an extended multivariate ENSO index (MEI.ext), *Int. J. Climatol.*, 31, 1074–1087, doi:10.1002/joc.2336, 2011.
- Xoplaki, E., Gonzalez-Rouco, F. J., Luterbacher, J., and Wanner, H.: Wet season Mediterranean precipitation variability: influence of large-scale dynamics, *Clim. Dynam.*, 23, 63–78, 2004.
- Yue, S. and Wang, C. Y.: The Mann–Kendall test modified by effective sample size to detect trend in serially correlated hydrological series, *Water Resour. Manag.*, 18, 201–218, 2004.

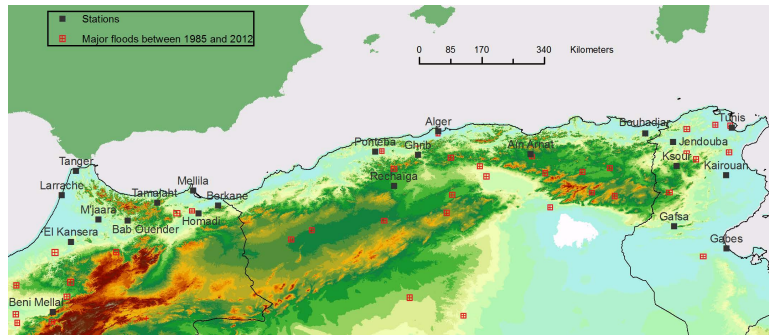
3647

**Table 1.** Stations with precipitation data (the full years are those with less than 5 % missing data during the hydrological year).

ID	Name	Country	Altitude (m)	Beginning	End	Number of full years
1	Rechaiga	Algeria	830	1948	2005	39
2	Alger	Algeria	140	1951	2005	46
3	Ain Arnat	Algeria	1100	1970	2005	37
4	Bouhadjar	Algeria	0	1945	2005	37
5	Ghrib	Algeria	460	1968	2005	36
6	Ponteba	Algeria	140	1968	2005	38
7	Bab Ouender	Morocco	312	1956	2006	44
8	M'jaara	Morocco	96	1958	2006	45
9	Beni Mellal	Morocco	537	1950	2007	54
10	Berkane	Morocco	160	1959	2006	44
11	El Kansera	Morocco	100	1950	2006	44
12	Homadi	Morocco	230	1950	2004	46
13	Tamalaht	Morocco	275	1970	2005	34
14	Larrache	Morocco	5	1942	2011	49
15	Tanger	Morocco	5	1972	2006	33
16	Mellila	Morocco	47	1907	2009	46
17	Gabes	Tunisia	4	1950	2009	57
18	Gafsa	Tunisia	300	1950	2009	58
19	Jendouba	Tunisia	143	1950	2009	59
20	Kairouan	Tunisia	55	1950	2009	58
21	Ksour	Tunisia	720	1950	2009	49
22	Tunis	Tunisia	66	1950	2009	58

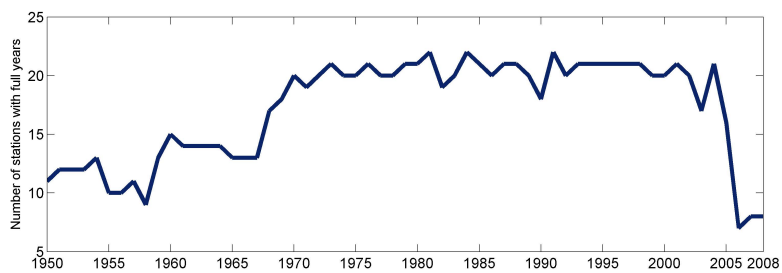
3648





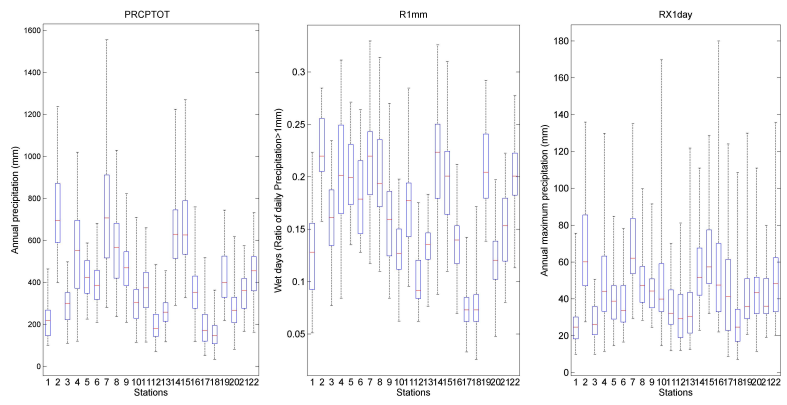
**Fig. 2.** Map of the selected stations and centroids of the areas affected by floods between 1984 and 2012 (data from G. R. Brakenridge, “Global Active Archive of Large Flood Events”, Dartmouth Flood Observatory, University of Colorado, <http://floodobservatory.colorado.edu/Archives/index.html>).

3651



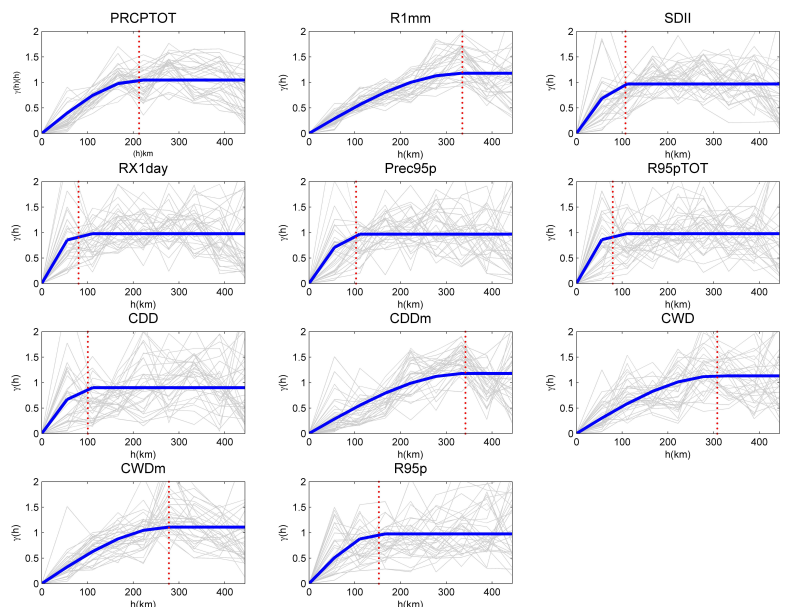
**Fig. 3.** Number of stations with full years (less than 5% missing data) between 1950 and 2008.

3652



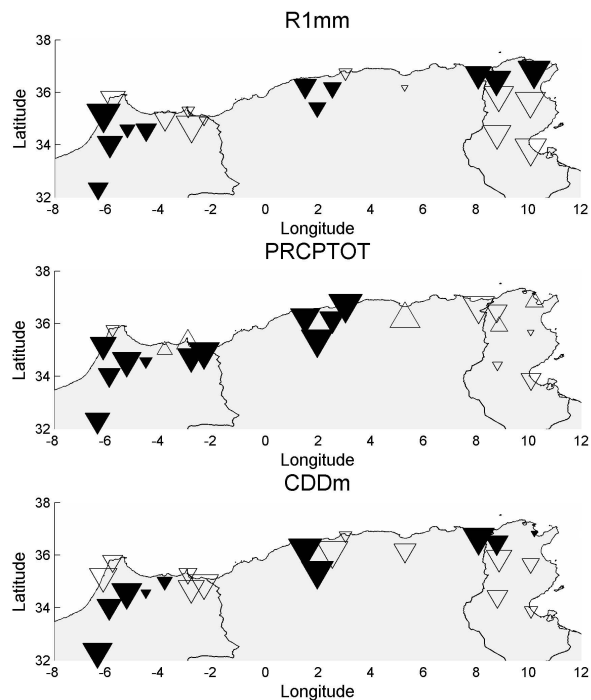
**Fig. 4.** Box plots showing the PRCPTOT, R1 mm and RX1day precipitation indices for the 22 rain gauges considered in this study. The boxes have lines at the lower quartile and upper quartile values; the whiskers extend from each end to the most extreme values.

3653



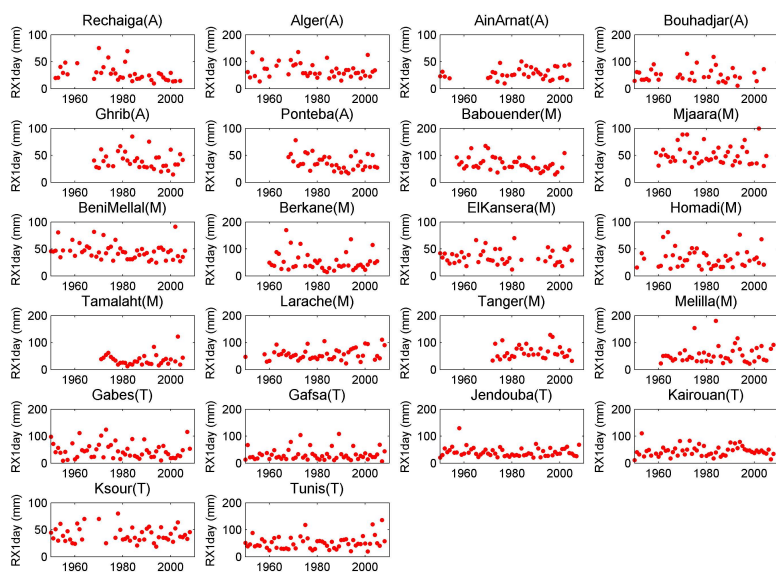
**Fig. 5.** Climatological variograms computed for the indices each year (grey lines). The thick blue lines represent the fitted spherical variogram models and the red dotted lines are the ranges of the fitted variograms.

3654



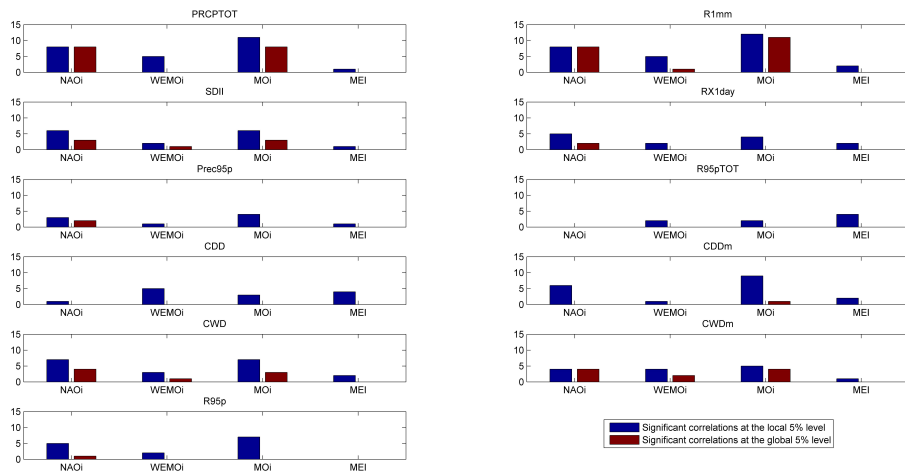
**Fig. 6.** Maps of the long term trends detected for the indices R1 mm, PRCPTOT and CDDm. The size of the triangles is proportional to the Sen slopes computed on the full length of the time series. The triangles filled with black are the stations where the trend is significant at the 5% level according to the Mann–Kendall test. The actual values of the Sen slopes are in Table 2.

3655



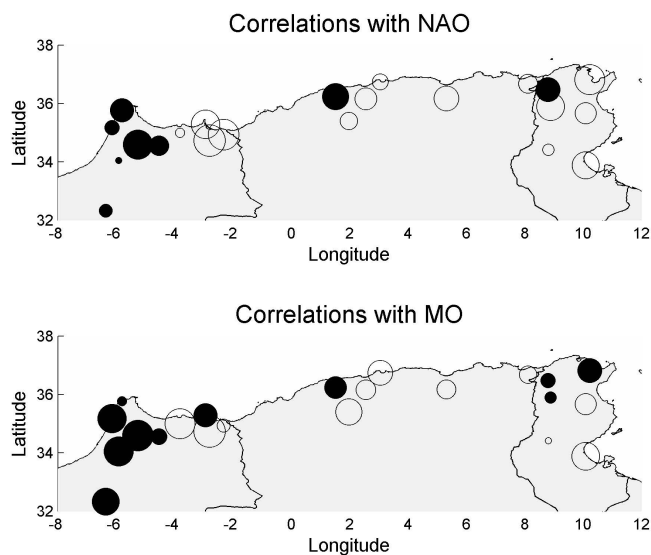
**Fig. 7.** Times series of the annual maximum daily precipitation (RX1day) at the different stations.

3656



**Fig. 8.** Number of stations with significant correlations with the NAOi, WEMOI, MOi and MEI indices at the 5% local and global levels.

3657



**Fig. 9.** Correlation between annual precipitation (PRCPTOT) and the NAOi and MOi indices at the different stations. The size of the circles is proportional to the Spearman correlation coefficients. The circles filled with black are the stations where the correlation is significant at the 5% level.

3658