

This discussion paper is/has been under review for the journal Natural Hazards and Earth System Sciences (NHESS). Please refer to the corresponding final paper in NHESS if available.

Mesoscale numerical analysis of the historical November 1982 heavy precipitation event over Andorra (Eastern Pyrenees)

L. Trapero^{1,2}, J. Bech², F. Duffourg³, P. Esteban^{1,2}, and J. Lorente²

¹Snow and Mountain Research Center of Andorra – Andorran Research Institute, Sant Julià de Lòria, Andorra

²University of Barcelona, Barcelona, Spain

³Centre National de Recherches Météorologiques – Groupe d'étude de l'Atmosphère Météorologique, Météo-France – Centre National de la Recherche Scientifique, Toulouse, France

Received: 5 April 2013 – Accepted: 13 May 2013 – Published: 5 June 2013

Correspondence to: L. Trapero (ltrapero.cenma@iea.ad)

Published by Copernicus Publications on behalf of the European Geosciences Union.

2495

Abstract

From 6 to 8 November 1982 was recorded one of the most catastrophic flash-flood events in the Eastern Pyrenees affecting Andorra and also France and Spain with rainfall accumulations exceeding 400 mm in 24 h, 44 fatal victims and widespread damage. This paper aims to document exhaustively this heavy precipitation event and examines mesoscale simulations performed by the French Meso-NH non-hydrostatic atmospheric model. Large scale simulations show the slow-evolving synoptic environment favourable for the development of a deep Atlantic cyclone which induced a strong southerly flow over the Eastern Pyrenees. From the evolution of the synoptic pattern four distinct phases have been identified during the event. The mesoscale analysis presents the second and the third phase as the most intense in terms of rainfall accumulations and highlights the interaction of the moist and conditionally unstable flows with the mountains. The presence of a SW low level jet (30 m s^{-1}) around 1500 m also had a crucial role on focusing the precipitation over the exposed south slopes of the Eastern Pyrenees. Backward trajectories based on Eulerian on-line passive tracers indicate that the orographic uplift was the main forcing mechanism which triggered and maintained the precipitating systems more than 30 h over the Pyrenees. The moisture of the feeding flow mainly came from the Atlantic Ocean ($7\text{--}9 \text{ g kg}^{-1}$) and the role of the Mediterranean as a local moisture source was very limited ($2\text{--}3 \text{ g kg}^{-1}$) due to the high initial water vapour content of the parcels and the rapid passage over the basin along the Spanish Mediterranean coast (less than 12 h).

1 Introduction

As other mountainous Mediterranean regions, Andorra (Eastern Pyrenees) is regularly affected by intense precipitation events and subsequent flash floods. The most catastrophic case for at least the last 30 yr in terms of rainfall accumulations and human losses in Andorra (Fig. 1) took place from 6 to 8 November 1982. This episode

2496

associated to a very strong windstorm, also affected the neighbouring areas of SE France and NE Spain (Catalonia) producing historical precipitation amounts in the Pyrenees such as the 610 mm recorded in 48 h in Py (France). Not surprisingly, excessive rainfall caused widespread damage and casualties, destruction of buildings and infrastructure with substantial economic losses. There were 13 fatal victims in Andorra (based on the Andorran police database), 15 more in France, mainly caused by uprooted trees, and 14 in Catalonia. Particularly in Andorra, the huge flood impacts on landscape, roads and infrastructures caused important economic losses estimated in €24 million (Fig. 2). This flood event is compiled among one of the major flood disasters in Europe included in the 1950–2005 inventory reported by Barredo (2007) and subsequent studies like Gaume et al. (2009) where preliminary analysis results conclude that the most extreme flash floods are greater in magnitude in the Mediterranean countries than in the inner continental countries.

Several studies carried out in the eighties analysed the meteorological synoptic framework which favoured the episode and examined the wind and rainfall observations from a climatological point of view, highlighting the extreme character of the event and the enhanced precipitation along the Pyrenees and Massif Central ranges (Cailleau and Santurette, 1983; Albentosa, 1983; Llasat, 1991; Marti-Bono and Puigdefabregas, 1983; Corominas and Alonso, 1990). Contrary to other catastrophic events occurred in the Pyrennes, such as the Biescas disaster (87 people killed in a campsite) where flash flood was caused by short but very intense convective rainfall (160 mm in 1 h) over a small area (Riosalido et al., 1997; Gutierrez et al., 1998), the 1982 event was characterized by long-lasting stationary precipitating systems (>30 h) over an extended area which lead to high rainfall surface totals (>150 mm in 24 h over Andorra) and widespread flash-floods as in the Segre river basin. As described in earlier studies the event was characterized by a synoptic environment prone to generate a heavy precipitation event over the western Mediterranean area. However, to get a better insight on the mechanisms that triggered and maintain heavy precipitation resulting in the high accumulations observed, the interaction between synoptic scale and local

2497

circulations over the complex orography of the region must be examined in detail similarly to other studies carried out over other mountain regions worldwide (see Houze, 2012 for a review).

Andorra, located in the eastern half-side of the Pyrenees range, is 468 km² and is the highest country on average (2044 m) in Europe, with a range of altitudes between 837 m and 2942 m (Comapedrosa peak). Consequently, steep mountain slopes are ubiquitous on the country, and represent a key factor in the potential occurrence of natural hazards as landslides, rock falls, snow avalanches and flash floods (Gallego, 2003). Furthermore, in 1982 after a strong urban expansion period during the seventies (economic boom), the vulnerability of the infrastructures, buildings and people highly increased due to the weak territory planning efforts. As a consequence, after the event, it was highlighted the importance of natural hazards management in this Pyrenean country.

From a climatic point of view, Andorra has a sub-Mediterranean climate, characteristic of the NE part of the Iberian Peninsula. However, some features as continental influences, the orography and the south-facing location in the Pyrenees introduce changes in the typical seasonal precipitation regimes and expected amounts as it is shown in the climatological atlas of Andorra (Batalla et al., 2011). In this way, the southerly flows usually lead to heavy precipitation events over the Pyrenees (Sotillo et al., 2003) and Andorra (Fig. 8c from Esteban et al., 2009) as in other exposed mountainous regions in southern France (Nuissier et al., 2011). Nevertheless, the low and favourably-oriented orography of the French side of the Pyrenees also enables the easy entrance of Atlantic air masses, especially affecting elevated areas of the northern half of Andorra. Localized intense rainfall events triggered by diurnal forcing mainly in summer also occur such as the 1 August 2008 thunderstorm (Trapero et al., 2011) but in general orographic factors have been found to be instrumental in previous cases studied (Trapero et al., 2013). In summary, the Andorran area can be considered as an interesting crossroad of climates (Atlantic and Mediterranean) and meteorological phenomena's.

2498

Many of the factors previously described are relevant for understanding the 1982 heavy precipitation event (HPE). This paper aims to document exhaustively and to analyze the major flash flood event recorded in Andorra. Even though earlier studies already described the synoptic-scale context of this HPE, the large-scale situation is detailed in Sect. 2 since the synoptic environment highly governed the evolution of the atmospheric conditions. Satellite data, rainfall accumulations as well as results of a geomorphological survey are described in the following subsection. The main goal of the study is the use for the first time of a convective-scale model to obtain realistic simulations of the 1982 HPE and to go further into the factors which lead to large rainfall accumulations over Andorra and Eastern Pyrenees. Section 3 describes the mesoscale model configuration and assesses the results of the simulations. Section 4 gives a detailed analysis of the mesoscale simulations as well as the effect of the Mediterranean Sea as a local source for moisture supply to the precipitating systems. Summary and concluding remarks are given in the final section.

2 The case study

2.1 Precipitation and satellite observations

During the morning of 6 November 1982, light precipitation started over Andorra and did not stop until two days later. As no weather radar data is available for this event, we focus our analysis of precipitation observations on daily records in Andorra, south-eastern France and Catalonia which allow characterizing local maxima and their approximate spatial distribution over the Pyrenees (Fig. 3). During the first 24 h of the episode, from 06:00 UTC of 6 November to 06:00 UTC, 7 November 1982 (Fig. 3a), the accumulated precipitation showed a maximum over the easternmost extreme of the Pyrenees and the Roussillon French region. Surface rainfall amounts exceeded 100 mm in 24 h, and one of the stations of the Météo-France daily raingauge network recorded 260 mm (Py weather station).

2499

Over Andorra, the 24 h accumulations registered in the valley were about 40 mm. Additional reports (Commission Météorologique Départementale, 1982) documented that thunderstorms and convective precipitation occurred over Languedoc-Roussillon area. In METEOSAT-2 satellite image from the visible channel on the 6 November at 12:00 UTC (Fig. 4) a cold front can be recognize as a cloud band over the Atlantic Ocean. The cumulus observed to the northwest of this cloud band indicates the presence of cold air. Over the NE of the Iberian Peninsula orographic clouds are identified on the Pyrenees (Andorra) and the first reliefs close to the Catalan coast.

The maximum 24 h surface rainfall amounts of the event took place between 06:00 UTC, 7 November and 06:00 UTC, 8 November (Fig. 3b). The heaviest precipitation was located over mountainous areas over the southern slopes of the Pyrenees, especially the Pre-Pyrenees (e.g. Pobla de Lillet 266 mm, Cabdella 252 mm) and Eastern Pyrenees in France. As in the previous day, maxima were observed in French stations of Vallcebollère (408 mm), Py (350 mm) and Porté-Puymorens (196 mm). Daily amounts in Andorra were: Ransol (151 mm), Escaldes (140 mm) and Ordino (91.6 mm). The 151 mm measured in Ransol is still the 24 h rainfall record in Andorra since the beginning of observations in 1948. First reliefs onshore from the Catalan coast like Montseny massif (1700 m a.s.l.) were affected during the episode (95 mm) whereas in lower south Catalan mountain ranges (Montsant, Prades Mountains: 1200 m a.s.l.) precipitation did not exceed 50 mm. Visible satellite image on the 7 November at 12:00 UTC (Fig. 4) shows over the Atlantic the typical spiral cloud structure associated with the mature stage of extratropical cyclones and the wide north-south cold-frontal band located over Spain approaching the west border of Andorra. It can be also recognized in the satellite image the cloud-free dry area associated to the cold air. Progressively the cold front advanced to the east, impinging a widespread area of cloudiness over Catalonia and Andorra. It must be highlighted the cloud free slot just north of Andorra as a result of the cloud evaporation in the lee side of the Pyrenees (Föhn effect).

Considering the total accumulations of the episode (from 06:00 UTC, 6 November 1982 to 06:00 UTC, 8 November 1982) extreme surface rainfall was recorded: 196 mm (Ransol), 566 mm (Vallcebollère) and 610 mm (Py). This last record appears among the seventh heaviest events reported over France and is greater than the mean annual precipitation collected in Paris or Barcelona. This episode also affected neighbouring Mediterranean mountain areas as the Massif Central in south France where several weather stations exceeded 400 mm, such as Roqueredonde in Herault (509 mm) or Valleraugue in Gard (476 mm) (Météo-France, 2012).

Due to the widespread damage caused by the heavy rainfall and subsequent landslides a geomorphologic survey was carried out by the Institut d'Estudis Andorrans (IEA) from Perpignan (France) in collaboration with the University of Paris in December 1982 (Barthélemy, 1982). The purpose of the field campaign was to map effects of precipitation in terrain movements and classify qualitatively the Andorran territory according to the estimated precipitation. The zonification resulting from the terrain analysis is reproduced in Fig. 5. Four categories were considered: (1) Normal rain: no substantial terrain movements; (2) Moderate rain: strong current marks, overflows, some traces of gullies, but almost no mark resumption of erosion and accumulation; (3) Heavy precipitation: important but not catastrophic marks; (4) Extreme precipitation: catastrophic marks. The zonification over Andorra assigned category 2 to the Ransol and Escaldes surface rainfall measurements located close to the river valley. Whereas over the west border of Andorra as well as in Engolasters located in the central part of the country (areas without any raingauge measurement), the observed terrain movements estimated that these zones were affected by extreme precipitation (category 4). This estimation is consistent with rainfall measurements observed in other stations located in elevated areas in the Pyrenees. The rainfall intensities inferred from the field campaign give us very valuable information in order to complement the limited density of observations available over Andorra and to validate the mesoscale numerical simulation of this episode.

2501

2.2 Synoptic overview

An overview of the synoptic conditions from 6 to 8 November 1982 which favoured the development of the episode are described in this section. The evolution between the 6 November 1982, at 12:00 UTC and the 7 November 1982 at 12:00 UTC is presented in Fig. 6 using the results of the dynamical downscaling of the ERA-Interim reanalysis with approximately 80 km of horizontal resolution (Dee et al., 2011), over a domain which covers Western Europe, Northern Africa and the eastern part of North Atlantic Ocean at 40 km horizontal resolution (Fig. 1a).

Figure 6, besides mean sea level pressure and the surface wind evolution, also shows the equivalent potential temperature field (Θ_e) and the wind at 850 hPa. At the beginning of the event, the mean sea level pressure and 10 m wind maps (Fig. 6a), show the presence of a strong surface cyclone (965 hPa) centred in front of the Galician coast and an associated cold front approaching Portugal (Fig. 6e). Simultaneously, high pressure centres installed over Central and Eastern Europe are reinforced due to a Scandinavian cold air advection (see top right corner of Fig. 6e). This blocking synoptic configuration slowed down the westward advance of the extratropical cyclone generating a strong pressure gradient over the Eastern Pyrenees. This synoptic pattern induced south-easterly winds over the NE part of the Iberian Peninsula (Fig. 6a). On the 6 November at 12:00 UTC (Fig. 6e), the equivalent potential temperature also shows a relatively warm and moist air mass over the NE part of the Iberian Peninsula, as well as the presence of two other air masses with higher Θ_e values: the first one over the North African coast and the second one over the Atlantic Ocean (Madeira Island) ahead of the cold front. At mid levels (500 hPa) an elongated and pronounced trough extending from Greenland to the coast of Portugal is present (Fig. 6c). The 500 hPa geopotential pattern above Central Europe was characterized by the presence of a persistent ridge with omega configuration (Fig. 6c and d). Simultaneously, at 200 hPa the left exit of a jetstreak was located over the Atlantic Ocean and a south-westerly diffluent flow over the Pyrenees. Moreover, on the 6 November an anomaly of the dynamical

2502

tropopause height (DTH) was present in the 1.5 PVU surface (Potential Vorticity Unit). The anomaly appears clearly in Fig. 6c as a dark shaded band (DTH < 4.5 km) extending along a northwest-southeast axis over the Atlantic associated to the trough. This upper-level anomaly is a classical synoptic scale ingredient which enhances upper-level divergence and intensifies the cyclonic winds at low atmospheric levels east of the anomaly (Hoskins et al., 1985). The gradual strengthening of the surface cyclonic winds during the 6 November 1982 afternoon amplified the low-level temperature advection (strong temperature gradient between the polar air mass and the warm sector ahead of the front) which in turn amplified the upper-level anomaly favouring the cut-off characteristics of the upper-level circulation (Fig. 6d) (Semple, 2003). The blocking of the synoptic circulation at high levels as well as the slow-evolving anticyclonic conditions installed over Central Europe contributed during the next hours to the generation of a fast and wide south-westerly flow over the entire profile of the Iberian Peninsula. The location of the cold low at upper levels the 7 November at 12:00 UTC was in phase with the surface depression generating a deep and mature extratropical cyclone centred in the NW of the Galician coast (Fig. 6b and d). It is during this stage that winds reached their highest intensity with values greater than 15 m s^{-1} over Andorra, Catalonia and the southern coast of France (Gulf of Lion), where a surface convergence zone was formed (Fig. 6b). The jet stream strengthened to around 50 m s^{-1} (Fig. 6d) over the Pyrenees. The Θ_e field (Fig. 6f) shows the temperature structure of a developed cyclone with a region of warm air wrapping cyclonically around the low pressure centre associated with the warm conveyor belt (Harrold, 1973) affecting the eastern half of the Iberian Peninsula. Behind this warm and moist synoptic scale flow a band of low Θ_e shows the surface cold front approaching the Pyrenees. It is on the 7 November afternoon that the pressure centre slightly increased, the cyclone started to decay and moved north-eastward allowing the cold frontal surface to cross over the Pyrenees.

The low and upper-level slow-evolving synoptic conditions played a crucial role in the evolution of this episode, under these circumstances over Andorra (Pyrenees) the

2503

strong cyclonic flow persisted more than 36 h advecting directly to the Pyrenees several airflows with different thermodynamic features. Based on this synoptic analysis the episode can be divided in four stages. The first phase started the 6 November 1982 when synoptic conditions built up the initial favouring environment (from 06:00 UTC, 6 November 1982 to 00:00 UTC, 7 November 1982), during the second phase when the Atlantic cyclonic flow was well established over the Iberian Peninsula a first warm front affected the Eastern Pyrenees (second stage: 00:00–08:00 UTC, 7 November 1982). Later on, during the third phase due to the synoptic blocking the warm and moist conveyor belt ahead of the cold front impinged on the Pyrenees almost 10 h (08:00–18:00 UTC, 7 November 1982). Finally, the cold front crossed over the Pyrenees and moved towards the Mediterranean Sea (fourth stage from 18:00 UTC, 7 November 1982).

3 Numerical simulation and mesoscale analysis

3.1 Model settings

The numerical simulations performed with the French non-hydrostatic research model MESO-NH (Lafore et al., 1998) aim to reproduce the precipitation systems and describe the ingredients which caused the heavy precipitation event over Andorra on 6, 7, 8 November 1982. Three 2-way nested domains have been used with horizontal resolutions of 40, 10, 2.5 km and 40 vertical levels. The area corresponding to the coarsest domain (D1) and their nested domains (D2, D3) are shown in Fig. 1. D1 aims to describe the synoptic environment over Western Europe, part of Northern Africa and North-eastern Atlantic, D2 is centred over the Iberian Peninsula and D3 with a dimension of $600 \times 600 \text{ km}$ and 2.5 km horizontal resolution covers the NE of the Iberian Peninsula, South France, and is centred over Andorra including the entire Pyrenees Massif. The initial and boundary conditions for the 48 h simulation of this historical episode have been provided by the ERA-Interim reanalysis from the ECMWF

2504

(Dee et al., 2011) with about 80 km of horizontal resolution, 60 vertical levels and 6 h temporal resolution. Table 1 summarizes some model configuration features. A battery of preliminary tests have been performed in order to define the domains, their horizontal resolution and the initial time of the mesoscale modelisation in order to better capture the evolution of the atmospheric conditions.

Both the physical and dynamical configuration of the model is based on Duffourg and Ducrocq (2011). It should be noted that a 1-moment mixed microphysical scheme which combines a three-class ice parameterization with a Kessler's scheme for the warm processes (Caniaux et al., 1994; Pinty and Jabouille, 1998) governs the prognostic equations of the six water species defined (water vapour, cloud water, rain water, ice, snow aggregates and graupel). The one-dimensional turbulence parameterization is based on a 1.5-order approximation of the TKE equation (Cuxart et al., 2000). The sub-grid-scale effect of deep convection is parameterized for horizontal resolutions of 40 and 10 km by the Kain–Fritsch scheme (Kain and Fritsch, 1993), whereas for the inner domain no scheme for deep convection is activated, as 2.5 km is considered a convection permitting resolution. Moreover, shallow convection is also parameterized and based on a particular EDMF (Eddy Diffusivity Mass Flux) scheme described in Pergaud et al. (2009).

3.2 Quantitative precipitation forecast (QPF) validation

Daily accumulated precipitation from 06:00 UTC, 6 November 1982 to 06:00 UTC, 8 November 1982 obtained from the MESO-NH simulations is shown in Fig. 7. These two 24 h periods are comparable with the only available rainfall observations presented in Sect. 2.1. In this section, before starting the mesoscale analysis of the event it should be verified that the simulations achieved to reproduce the large precipitation amounts represented in Fig. 3 and the spatial distribution matches with the observed HPE.

The rainfall pattern identified in both QPF at 2.5 km resolution shows the orography as one of the mechanisms which controlled the uplifts and allowed the generation of convective cells. The simulated heaviest precipitation is located over the mountain

2505

areas as the observed ones mainly in the most exposed sides in the south slope of the Pyrenees showing the uplift efficiency of the mountain range configuration to the southerly flows due to its west–east main axis and the south–north valleys orientation. Complementary, the simulations also confirm the strong effect of the Foehn wind in the lee side of the Pyrenees, just north of Andorra, where the rainfall was very weak or inexistent due to the downslope adiabatic warming. Note that in some French locations the monthly maxima temperature records were break, for instance in Toulouse the new record was 22.5 °C, while the previous record was 22 °C dated from November 1955 (Commission Météorologique Départementale, 1982).

The 6 November over the Roussillon region and Py location, the model underestimates the rainfall accumulation despite a north–south precipitation band is well simulated. On the other hand the several maximum simulated in the Pre-Pyrenees (>100 mm) are very realistic, but the ones in the western edge of the domain are overestimated. Light widespread precipitation simulated over Catalonia (<30 mm) is of good quality regarding of the observed precipitation pattern. During the second 24 h period (Fig. 7b) according to the observations the highest intensities of the event were simulated over mountainous areas. The maximum greater than 350 mm in the eastern edge of the Pyrenees (Canigo Massif) matches with the observed HPE. It is noteworthy the high rainfall gradient present between the mountain peaks and the river valleys consistent with the observations. Moreover, a secondary maximum is well simulated in the Montseny Massif despite its extension is overestimated.

Particularly over Andorra highest intensities are simulated over east exposed sides of the west and south-east border over the elevated terrain. Despite not having observations over this area this spatial rainfall distribution obtained over Andorra, especially the maximum identified in the west border is consistent with the rainfall accumulations estimated by the proxy data obtained from the analyses of the terrain movements. These results over Andorra can be complemented by the hourly evolution of the simulated precipitation over the pixel corresponding to the location of the two Andorran meteorological weather stations (Fig. 8). The red line represents the total

2506

accumulated rainfall simulated by the model, and dark points to the 24 h accumulative observed precipitation. Both simulations overestimate the observations taken in the narrow valley of Andorra. Despite the 2.5 km model simulations reproduces the topography fairly well, in such a narrow valley it is difficult to solve the altitude gradients between the peaks and the valleys. In that case, the corresponding model altitude to these weather stations is 400 m highest than its real altitude and probably the rate of evaporation that rainfall suffers is underestimated. This hypothesis is based on the fact that the model is able to reproduce the rainfall maxima close to the peaks and the rainfall shadow in the leeward of the Pyrenees.

Thus, the 2.5 km model simulations provide a good representation of the heavy precipitation event and the spatial distribution of rainfall maxima. This prerequisite ensures that the simulation can be considered as representative of the mesoscale environment present in this HPE.

4 Mesoscale analysis

This section focuses on the analysis of the mesoscale factors leading to the triggering and maintenance of the precipitation more than 30 h over the Pyrenees. To carry out the study, the results obtained from the 10 and 2.5 km simulations described in the previous section have been used. The analysis is divided in four parts, one for each of the chronological phases that have been identified by means of the synoptic environment description. In addition to the classical synoptic diagnostics at low and upper-levels, the water vapour flux at low levels has also been computed in order to characterise the moisture supply in each phase of the event. This additional diagnostic has been calculated such as a 3 km-depth vertically integrated moisture flux:

$$Q_3 = \int_0^{z=3 \text{ km}} \rho_v V_h dz, \quad (1)$$

2507

where ρ_v is the specific humidity and V_h the horizontal wind. This diagnostic has also been used in other recent studies of HPE over the Northwestern Mediterranean area (e.g. Nuissier et al., 2008; Duffourg and Ducroq, 2011; Ricard et al., 2012). The recent study from Ricard et al. (2012) presents a climatology of the mesoscale environment associated to heavy precipitation events which hit south-eastern France, as the case considered here. According to the synoptic environment, this HPE belongs to the episodes classified as strong SW cyclonic flows in the Nuissier et al. (2011) classification. The mean moist flow integrated from 0 to 3 km for that circulation type calculated by Ricard et al. (2012) does not exceed $300 \text{ kg m}^{-1} \text{ s}^{-1}$ (see their Fig. 10).

Complementary, in order to better understand the origin and dynamics of the air masses that feed the precipitation systems reproduced by the model over the Pyrenees a series of backward trajectories have been computed during the second and third phase of the event. The backward trajectories of the selected lagrangian parcels inside the ascents (4–7 km) are performed by the lagrangian analysis tool of Gheusi and Stein (2002). The methodology followed in the analysis is similar to the one used in Duffourg and Ducroq (2011): the air parcels are tracked backwards within the 2.5 km domain as long as they remain inside and at the latest till 4 h after the initial time; when the parcels go out of the 2.5 km domain, similar backward trajectories are performed in the 10 km domain using as starting position the latest point of the parcel in the inner domain. The evolution of the parcel water vapour mixing ratio along their trajectories is also examined in order to identify the role of the Mediterranean Sea as a local moisture source in this episode.

4.1 Phase 1: first stage (06:00 UTC, 6 November 1982 – 00:00 UTC, 7 November 1982)

Before the episode, anticyclonic conditions and stable environment at low and upper levels prevailed especially over the Mediterranean area since 27 October. These persistent conditions favoured the formation of a subsidence inversion around 1500 m and the accumulation of moisture at low levels generating a conditionally unstable

2508

Mediterranean air mass (Jansà, 1959; Ramis, 1995). The earlier hours of this stage, were characterized by low-level weak southerly winds over Catalonia which progressively shifted north-westward at 12:00 UTC over the surface induced by the anticyclonic conditions over Central Europe. This low-level maritime flow ensured the supply of relatively warm and moist air coming from the area located between Balearic Islands and Catalonia with CAPE values of 200 J kg^{-1} (Fig. 9a, Θ_e around 313 K). The atmospheric sounding observed in Palma de Mallorca 6 November at 12:00 UTC (Fig. 10) confirms these thermodynamic instability of the low level flow with LFC of 600 m (yellow part column), the presence of the subsidence inversion at 800 hPa (blue part column) and clearly shows the wind shear between the surface and the rest of the vertical profile. This features are also present in the Θ_e vertical cross section over a west–east axis along the Pyrenees (Fig. 9b), where the subsidence inversion and a layer of dry air (lower Θ_e values) can be detected above 2000 m over the sea and the Pyrenees. In this initial stage the 3 km vertically integrated water vapour flux (Fig. 11a) was characterized by values lower than $200 \text{ kg m}^{-1} \text{ s}^{-1}$ over the Pyrenees, mostly concentrated in the lowest first kilometre. In Fig. 9a, over the north coast of Africa it can be also distinguished an area of elevated Θ_e and conditionally unstable conditions with CAPE greater than 500 J kg^{-1} . Along the Portugal coast another maximum of Θ_e associated to an Atlantic moister flow ($400 \text{ kg m}^{-1} \text{ s}^{-1}$) in the warm sector ahead of the cold front is identified.

With the gradual increase of the pressure gradient over the Pyrenees, south-easterly winds are reinforced allowing the generation of the first precipitating clouds over the first foothills and the exposed south sides of the Pyrenees by means of the orographic uplift of the conditionally unstable air mass breaking up the subsidence inversion. Figure 12 shows in violet shaded colour the areas at 1000 m with vertical velocities greater than 1 m s^{-1} . Notice the elongated bands of vertical velocity just north of Andorra which can be associated to the mountain wave generation downstream of the Pyrenees. The first orographic clouds are identified in the cross-vertical section (Fig. 9b), where the total hydrometeor content exceeding 1 g kg^{-1} (solid black line) is represented. The rainfall

2509

accumulated during this initial stage (Fig. 13a) is characterized by light and persistent orographic induced precipitation ($<50 \text{ mm}$) developed in a still conditionally unstable airflow under anticyclonic conditions.

4.2 Phase 2: warm front affecting the Pyrenees (00:00–08:00 UTC, 7 November 1982)

The second stage of the episode began the 7 November 1982 (00:00 UTC), when the warm air mass located over the Balearic Islands and previously detected in phase 1 over North Africa (a warm source region) was advected northwards, organized as a west–east frontal band following the NE coastline of the Iberian Peninsula. The south-easterly wind component still present at low levels allowed this warm unstable flow with CAPE values greater than 500 J kg^{-1} to penetrate into Catalonia. Figure 9c shows at 05:00 UTC, 7 November 1982 the west–east band of high Θ_e affecting the Eastern Pyrenees and Fig. 11b indicates that the Q_3 associated to this air mass is more important than previous stage ($>400 \text{ kg m}^{-1} \text{ s}^{-1}$). Behind this first warm front, the strong south-westerly flow induced by the Atlantic cyclone was established over the entire Iberian Peninsula. The warm conveyor belt appears in Fig. 9c as a wide stream of elevated Θ_e passing through the Gibraltar strait due to the presence of the Atlas range (Morocco) and following the Spanish Mediterranean Coast. The Q_3 also evidences the remarkable water content of this Atlantic flow ($>400 \text{ kg m}^{-1} \text{ s}^{-1}$) with a maximum of $550 \text{ kg m}^{-1} \text{ s}^{-1}$ in front of Valencia (Fig. 11b).

Figure 14 represents the temporal evolution of the simulated radar reflectivities at 2.5 km altitude from 02:00 to 06:00 UTC (7 November 1982). Although widespread precipitation is simulated over the Pyrenees and Catalonia, a maximum can be clearly identified as a non stationary convective line associated to the warm front moving eastward. The total hydrometeor content close to Canigo Massif (Fig. 9d) has an important vertical dimension of the precipitating cloud (7 km) compared to the other areas in the Pyrenees (5 km), which indicates the convective character of

2510

the precipitation in this area. This is consistent with the meteorological observations described in Sect. 2.2 that thunderstorms were observed in the Languedoc-Roussillon region. The backwards trajectories taken in the convective cells over Canigo at 05:00 UTC (Fig. 15) shows the low-level convergence of three branches due to the channelling of the southerly low level flows (below 1000 m) over the eastern edge of the Pyrenees. The parcels reaching 7 km in the vertical cross section also reveal the distinct uplifts suffered by parcels coming from higher levels (1–2 km) in the southerly flow. These ascents are mainly due to the interaction of the warm front with the Pyrenees (orographic forcing) as it can be seen in the backward trajectory extension of this branch over 10 km domain where the North African origin of the parcels is identified. Table 2 shows the evolution of the water vapour content along the pathway over the Mediterranean Sea. In this case, all parcels take around 12 h to reach the Pyrenees evidencing the intense low level winds which efficiently advected the conditionally unstable moist flow ($\sim 8 \text{ g kg}^{-1}$). Unlike the low level parcels progressively increment their vapour mixing ratio during their transport over the Mediterranean basin, parcels above 1000 m keep its water vapour content almost constant and gain less than 2 g kg^{-1} in the previous 2 h before reaching land.

Over the west border of Andorra from 03:00 UTC to 04:00 UTC there is a secondary maximum of reflectivity (Fig. 14a and b). According to the precipitation estimated by the terrain analysis (Fig. 5), this secondary maximum could contribute to explain the extreme rainfall intensities estimated in the west of Andorra. Based on the simulations results this location of the maximum seems to be favoured by an area of moisture convergence at low levels. The southerly winds that affected the Pre-Pyrenees created a south-easterly local circulation in order to flow around this massif and converge with the dominant south flow along the Segre Valley (south of Andorra). For this precipitation system, the backward trajectories confirm the channelling in the Segre Valley of a southerly flow coming from the Gibraltar strait as the 10 km domain shows (Fig. 15). The vertical structure was less developed than in the Canigo region (5 km), but clearly shows the 1000–2000 m as feeding layer of this convective cell. As in the previous

2511

structure, the parcels above 1000 m stayed up to 11 h over the Mediterranean Sea and did not modify its moisture content (4.5 g kg^{-1}) along its pathway. It is over land when parcels descended a hundred of meters and reached saturation mainly due to mixing processes with moister low level flow coming from North Africa (10 g kg^{-1}) as the yellow parcel shows.

The rainfall accumulations during the second phase (Fig. 13b) are more intense than in the previous stage due to the arrival from North Africa of the warm and moister air mass. The accumulation presents two maxima which match the limits of the Pre-Pyrenees: one over the western border of Andorra and the other over eastern extreme of the Pyrenees. The imprint of the warm front is clearly identified in the second one as a north–south band of intense precipitation. The rainfall underestimation over the Roussillon region could be attributed to the lesser stationarity of the simulated convective system which developed over the mountains and propagated north-eastward. This second phase governed by cyclonic conditions is characterized by the interaction of the warm front with the Pyrenees, where the relief as well as acting as lifting triggering mechanism also modulated its advance channelling the unstable air mass and generating low level convergence areas.

4.3 Phase 3: moist conveyor belt (08:00–18:00 UTC, 7 November 1982)

On the morning of 7 November the third phase of the episode started. It was characterized by steady precipitation leading to extreme rainfall accumulations (Fig. 13c) over the Pyrenees following the mountain range configuration and affecting the most exposed sides to the southerly flow: the SO–NE orientation of the Pre-Pyrenees and the S–N valleys axis. The simulated reflectivity evolution from 09:00 to 18:00 UTC, 7 November 1982 represented in Fig. 16 evidences the stationary and continuous regeneration of the precipitating cells as well as the eastward evacuation over the sea of the convective line developed in the previous phase. Furthermore, over the first foothills close to the coast relatively high reflectivity values are also simulated

2512

which clearly contrast with the weak values present in the valleys and the Central depression of Catalonia.

The long-lasting synoptic blocking and the mature stage of the Atlantic extratropical cyclone during this phase were reflected in the mesoscale environment through the persistent highest winds speeds of the south-westerly cyclonic flow in the entire vertical profile. At 12:00 UTC, 7 November 1982, the wide moist conveyor belt impinging directly on the Pyrenees can be distinctly identified in the potential temperature field at 850 hPa (Fig. 9e), with values exceeding 316 K but unlike the second stage the air mass had lower values of CAPE ($<500 \text{ J kg}^{-1}$) and elevated LFC around 1200 m (Fig. 10b). The west–east vertical cross-section over the Pyrenees (Fig. 9f) shows the vertical extent of this warm and moist layer (high Θ_e within the first 4 km along the mountain axis between Andorra and Canigo massif). The total water content of hydrometeors (represented as black contours $>1 \text{ g kg}^{-1}$) reveals the generation of vertically developed precipitating cores over the relief. In the eastern extreme, over the sea, the vertical structure of the warm front and its convective associated line can be identified. It is during this stage, that the low level water content flux achieves its greatest intensity exceeding the $550 \text{ kg m}^{-1} \text{ s}^{-1}$ during the entire period (Fig. 11c). This exceptional moist flow persisted approximately 10 h perpendicular to the Pyrenees, supplying a long-lasting precipitation system. Vertical velocities greater than 1 m s^{-1} at 1500 m represented in Fig. 17a clearly identify the orography as triggering mechanism of convective cells and its continuous regeneration while the above mentioned very moist flow persisted. Despite over other mountainous areas above 1000 m on the Catalan coast (Montseny) there were also vertical motions, it was over the Pyrenees where convective cells generation was more efficient because the orographic uplift was enough to reach the LFC and trigger precipitating cells. As it can be seen in the vertical cross section at 16:00 UTC (Fig. 17b) surface winds reached values of 15 m s^{-1} persisting more than 10 h. Furthermore, a distinct low level jet (LLJ) of 30 m s^{-1} around 1500 m generated a strong wind shear which contributed to enhance upward motion on the south slopes of the Pyrenees due to the interaction between

2513

horizontal vorticity and orography. The vertical reflectivity profile along a south–north axis over Andorra and Catalonia (Fig. 17c) evidences the south slope location of the most intense and vertically developed precipitation structures where the most distinct upward motions represented by the arrows took place. Note the intense downslope flow in the north slope of the Pyrenees causing the rapid evaporation of the precipitating system due to the strong adiabatic warming. This effect can also be detected in the Segre Valley located between Cadi range and Andorra, where rainfall accumulation was less important.

The backward trajectories computed during this phase are represented in Fig. 18. Both precipitation systems selected over Andorra and Canigo were fed by a unique branch coming from Gibraltar strait and advanced north-eastward along the Spanish coast. Due to the cyclonic winds strengthening during this phase, parcels spent less than 10 h over the sea. It appears from the vertical cross section that parcels were directly uplifted by orographic forcing over the Pyrenees and it did not exist low-level convergence. Parcels taken in the Andorran updrafts (5–4 km) were most of the times situated below 1000 m. However, cells over Canigo region were less developed (5 km) and fed by parcels mainly situated inside the LLJ (between 1000 and 2000 m). The moisture transport and the amount gained from the Mediterranean Sea are clearly conditional to its initial content and the level where the parcel was located. As it is shown in Table 2, the elevated initial water content before entering Gibraltar region ($>6 \text{ g kg}^{-1}$) highly limited the contribution of the Mediterranean Sea: parcels below 1000 m gained around 3 g kg^{-1} , and the ones above this level almost did not modify their content (1 g kg^{-1}).

From the fact that stationary convective cells were simulated over the Pyrenees during this stage, and there was no upstream propagation of the convective systems, it could be inferred that the system did not produce any cold pool propagating away from the ridge. In the vertical profile of Θ_e (Fig. 9f) a mixed convective layer, which acts increasing Θ_e at midlevels, and decreasing in the lower levels, can be identified as in the idealized simulations of strong conditionally unstable flow over a mountain ridge

2514

and the generation of a low level unstable flow with CAPE and low-level moisture content more important than the initial stage, especially in the eastern edge of the Pyrenees. The third phase is the most intense in terms of rainfall accumulations as a consequence of the stationary synoptic conditions and the highest intensities of the south-westerly cyclonic flow generating a LLJ. As a result, the Atlantic warm and moist conveyor belt impinged over the whole Eastern Pyrenees more than 10 h. As in the Aude case (1999) reported in Nuissier et al. (2008), the low CAPE values of this lasting flux seems to be counterbalanced by large moisture fluxes ($550 \text{ kg m}^{-1} \text{ s}^{-1}$). During the last phase, rainfall accumulations decayed when the anticyclonic blocking weakened and cold front crossed over the Pyrenees and followed its path towards the Mediterranean Sea. During the whole episode synoptic and mesoscale ingredients pointed out by Lin et al. (2001) as conducive to orographic rainfall were present (conditionally unstable environment, a LLJ, steep mountain and a quasi-stationary synoptic system). On the other hand, the episode characterized by long-lived ($>12 \text{ h}$) and spatially distributed ($>50 \times 50 \text{ km}^2$) precipitation could be classified as a Type I event according to the methodology proposed by Molini et al. (2009). Within the framework of that classification, a good estimate of the convective time scale (Molini et al., 2011) would be shorter than 6 h corresponding to convective equilibrium regime dominated by large scale forcing. Future work could include a predictability analysis of the different event phases similarly as performed by Reborá et al. (2013), or Kiel et al. (2013).

Furthermore, the backward trajectories have underlined the mechanism which contributed during phase 2 and 3 to generate the necessary forcing ascent to trigger and maintain the precipitation more than 30 h over the Pyrenees. For the second phase, additionally to the orographic forcing which triggered or enhanced warm frontal precipitating structures over the Pyrenees, also two areas of low-level wind convergence were identified: one in the west border of Andorra as a result of the deflection role of Pre-Pyrenees and the second one over Canigo region where southerly flows are channelled. For the third phase, strong updraughts are continuously

2517

generated all over the windward slopes of the Eastern Pyrenees. Hence the orographic uplift is the dominant lifting mechanism in this HPE which triggered long-lasting precipitating cells over the Pyrenees and Andorra.

The moisture inflow feeding the heavy precipitating cells was found to be confined within the lowest 2000 m of the atmosphere and its origin mainly within the warm and moist conveyor belt ahead of the cold front. The evolution of the water vapour content during its pathway showed the limited role of the Mediterranean Sea due to the high initial water vapour content of the parcels before entering this area and the rapid crossing of the basin (less than 12 h). Particularly, parcels between 1000 m and 2000 m had its origin mainly within the warm and moist conveyor ahead of the cold front and almost did not modify its initial moisture content (7 g kg^{-1}) before reaching saturation. Despite parcels below 1000 m were in contact with the Mediterranean air mass they also had elevated initial water content ($8\text{--}9 \text{ g kg}^{-1}$) and only $2\text{--}3 \text{ g kg}^{-1}$ could be gained from the Mediterranean. Therefore, for this HPE the moisture coming from remote sources regions (Atlantic and African air masses) is larger than the local moisture source. These results are in good agreement with Duffourg and Ducrocq (2011), which conclude that when cyclonic conditions prevail before the HPE the amounts of moisture gained from the Mediterranean is remarkably lower ($3\text{--}4 \text{ g kg}^{-1}$), and also Pinto et al. (2013) which studied a large dataset of HPEs affecting northwest Italy and concluded that the most intense events were characterized by a significant moisture advection from the Atlantic Ocean.

This present study strengthens the importance of the slow-evolving synoptic conditions and the strong cyclonic flow induced by the deep Atlantic low. Moreover it contributes to quantify the mesoscale ingredients as the substantial moisture advection from the Atlantic Ocean and details the crucial role of the Pyrenees in the major flash-flood event recorded in Andorra.

Acknowledgements. The authors appreciate the collaboration of SMC (Meteorological Service of Catalonia), especially Marc Prohom regarding the computation and quality control of the 24 h rainfall data from AEMET (Spanish Meteorological Agency). We would like also

2518

- Hoskins, B. J., McIntyre, M. E., and Robertson, A. W.: On the use and significance of isentropic potential vorticity maps, *Q. J. Roy. Meteor. Soc.*, 111, 877–946, 1995.
- Houze Jr., R. A.: Orographic effects on precipitating clouds, *Rev. Geophys.*, 50, RG1001, doi:10.1029/2011RG000365, 2012.
- 5 Jansà, J. M.: La masa de aire Mediterrànea, *Rev. Geofísica*, 69, 35–50, 1959 (in Spanish).
- Kain, J.-S. and Fritsch, J.-M.: Convective parameterization for mesoscale models: the Kain–Fritsch scheme, *Meteor. Mon.*, 46, 165–170, 1993.
- Keil, C., Heinlein, F., and Craig, G. C.: The convective adjustment time-scale as indicator of predictability of convective precipitation, *Q. J. Roy. Meteor. Soc.*, doi:10.1002/qj.2143, online first, 2013.
- 10 Lafore, J. P., Stein, J., Asencio, N., Bougeault, P., Ducrocq, V., Duron, J., Fischer, C., Hérelil, P., Mascart, P., Masson, V., Pinty, J. P., Redelsperger, J. L., Richard, E., and Vilà-Guerau de Arellano, J.: The Meso-NH Atmospheric Simulation System. Part I: adiabatic formulation and control simulations, *Ann. Geophys.*, 16, 90–109, doi:10.1007/s00585-997-0090-6, 1998.
- 15 Lin, Y. L., Chiao, S., Wang, T., Kaplan, M. L., and Weglarz, R. P.: Some Common Ingredients for Heavy Orographic Rainfall, *Weather Forecast.*, 16, 633–660, 2001.
- Llasat, M. C.: Gota Fría, Editorial Boixareu Universitaria, 139–150 pp., ISBN: 84-267-0829-3, 1991 (in Spanish).
- Marti-Bono, C. and Puigdefabregas, J.: Consecuencias geomorfológicas de las lluvias de noviembre de 1982 en las cabeceras de algunos valles pirenaicos, *Estud. Geogr.*, 170–171, 275–290, 1983 (in Spanish).
- 20 Météo-France: 6 au 8 novembre 1982 Tempête et inondations majeures sur le grand Sud, Pluies extremes, Météo-France, available at: <http://pluiesextremes.meteo.fr/1982-11-06/tempete-sur-l-ouest-de-l-europe-et-ravages-sur-le-sud.html> (last access: February 2013), 2012 (in French).
- 25 Migletta, M. M. and Rotunno, R.: Numerical simulations of conditionally unstable flows over a mountain ridge, *J. Atmos. Sci.*, 66, 1865–1885, doi:10.1175/2009JAS2902.1, 2009.
- Molini, L., Parodi, A., and Siccardi, F.: Dealing with uncertainty: an analysis of the severe weather events over Italy in 2006, *Nat. Hazards Earth Syst. Sci.*, 9, 1775–1786, doi:10.5194/nhess-9-1775-2009, 2009.
- 30 Molini, L., Parodi, A., Rebora, N., and Craig, G. C.: Classifying severe rainfall events over Italy by hydrometeorological and dynamical criteria, *Q. J. Roy. Meteor. Soc.*, 137, 148–154, 2011.

2521

- Nuissier, O., Ducrocq, V., and Ricard, D.: A numerical study of three catastrophic precipitating events over southern France, Part I: Numerical framework and synoptic ingredients, *Q. J. Roy. Meteor. Soc.*, 134, 111–130, doi:10.1002/qj.200, 2008.
- 5 Nuissier, O., Joly, B., Joly, A., Ducrocq, V., and Arbogast, P.: A statistical downscaling to identify the large-scale circulation patterns associated with heavy precipitation events over southern France, *Q. J. Roy. Meteor. Soc.*, 137, 1812–1827, doi:10.1002/qj.866, 2011.
- Pergaud, J., Masson, V., Malardel, S., and Couvreur, F.: A parameterization of dry thermals and shallow cumuli for mesoscale numerical weather prediction, *Bound.-Lay. Meteorol.*, 132, 83–106, doi:10.1007/s10546-009-9388-0, 2009.
- 10 Pinto, J. G., Ulbrich, S., Parodi, A., Rudari, R., Boni, G., and Ulbrich, U.: Identification and ranking of extraordinary rainfall events over Northwest Italy: The role of Atlantic moisture, *J. Geophys. Res.-Atmos.*, 118, 2085–2097, doi:10.1002/jgrd.50179, 2013.
- Pinty, J.-P. and Jabouille, P.: A mixed-phased cloud parametrization for use in a mesoscale non-hydrostatic model: Simulations of a squall line and of orographic precipitation. Proceedings of the Conference on Cloud Physics, Am. Meteorol. Soc, Boston, Everett, WA, USA, August 1999, 217–220, 1998.
- 15 Ramis, C.: Las observaciones de la atmósfera libre en Mallorca: una breve historia y algunos resultados, *Rev. de Ciència*, 17, 41–58, 1995 (in Spanish).
- Rebora, N., Molini, L., Casella, E., Comellas, A., Fiori, E., Pignone, F., Siccardi, F., Silvestro, F., Tanelli, S., and Parodi A.: Extreme rainfall in the Mediterranean: what can we learn from observations?, *J. Hydrometeorol.* doi:10.1175/JHM-D-12-083.1, online first, 2013.
- Ricard, D., Ducrocq, V., and Auger, L.: A climatology of mesoscale environment associated with Mediterranean Heavy Precipitating Events over a Northwestern Mediterranean area, *J. Appl. Meteorol. Clim.*, 51, 468–488, 2012.
- 25 Riosalido, R., Ferraz, J., Alvarez, E., Cansado, A., Martín, F., Elizaga, F., Camacho, J. L., and Martín, A.: A flash flood event in the Spanish Pyrenees: the Biescas case, INM, In WMO International Symposium on cyclones and hazardous weather in the Mediterranean, Palma de Mallorca, 151–158, 1998.
- Semple, A. T.: A review and unification of conceptual models of cyclogenesis, *Meteorol. Appl.*, 10, 39–59, 2003.
- 30 Sotillo, M. G., Ramis, C., Romero, R., Alonso, S., and Homar, V.: Role of orography in the spatial distribution of precipitation over the Spanish Mediterranean zone, *Clim. Res.*, 23, 247–261, 2003.

2522

- Trapero, L., Gallego, N., Margalef, A., and Esteban, P.: Analysis of a flood event that affected the Hispano-Andorran border the 1st August 2008, Poster in the IMPRINTS Workshop, February 2011, Toulouse, France, 2011.
- 5 Trapero, L., Bech, J., and Lorente, J.: Numerical modelling of heavy precipitation events over Eastern Pyrenees: Analysis of orographic effects, *Atmos. Res.*, 123, 368–383, doi:10.1016/j.atmosres.2012.09.014, 2013.

2523

Table 1. Model features used for each domain configuration.

Domain	Resolution	Dimensions (x, y, z)	Time step
1	40 km	100 × 108 × 40	64 s
2	10 km	480 × 240 × 40	16 s
3	2.5 km	240 × 240 × 40	4 s

2524

Table 2. Approximate water vapour mixing ratios of the parcels along their pathways over the Mediterranean Sea.

PRECIPITATION STRUCTURE	Level	Final WV mixing ratio	Initial WV mixing ratio	WV mixing ratio gained from the sea	Time above the sea
PHASE 2 – Andorra	lowest 1000 m	10 g kg ⁻¹	8.5 g kg ⁻¹	1.5 g kg ⁻¹	9 h
	1000–2000 m	7 g kg ⁻¹	4.5 g kg ⁻¹	–	11 h
PHASE 2 – Canigo	lowest 1000 m	8–11 g kg ⁻¹	8 g kg ⁻¹	2 g kg ⁻¹	12 h
	1000–2000 m	7 g kg ⁻¹	4–7 g kg ⁻¹	2 g kg ⁻¹	12 h
PHASE 3 – Andorra	lowest 1000 m	9–10 g kg ⁻¹	6.5 g kg ⁻¹	3.5 g kg ⁻¹	8 h
	1000–2000 m	7.8 g kg ⁻¹	7.2 g kg ⁻¹	1 g kg ⁻¹	–
PHASE 3 – Canigo	lowest 1000 m	9 g kg ⁻¹	6 g kg ⁻¹	3 g kg ⁻¹	10 h
	1000–2000 m	7–8 g kg ⁻¹	7–8 g kg ⁻¹	1 g kg ⁻¹	10 h

2525

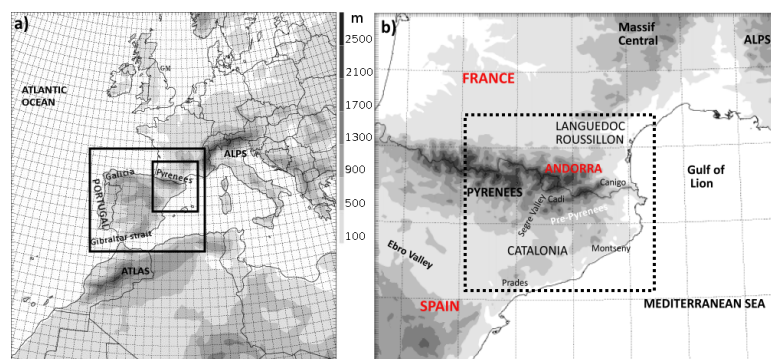


Fig. 1. (a) Area covered and topography of the coarser domain (40 km of horizontal resolution) used in the synoptic analysis. The two other nested domains (10 and 2.5 km) used in this study are delineated by black boxes. (b) Area covered and topography defined for the inner domain (2.5 km) centred in Andorra (Pyrenees). The dashed box indicates the area where observations and quantitative precipitation forecast are analysed. Different locations mentioned in the text are also shown. The orography is displayed in grey shaded colours (m).

2526



Fig. 2. Pictures of the catastrophic effects of the heavy precipitation event over Andorra in November 1982. Top picture shows the evacuation of tourists from a hotel in Andorra la Vella downtown. Bottom right image shows the important material deposition (2 m high) occurred in Aixovall (Source: Arxiu Nacional d'Andorra/Fons FPB).

2527

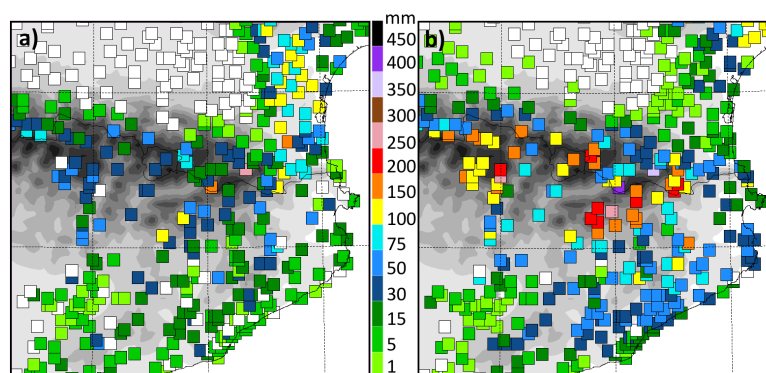


Fig. 3. 24 h accumulated precipitation (mm) from Météo-France and AEMET raingauge network. Accumulations correspond to daily manual observations. **(a)** From 06:00 UTC, 6 November to 06:00 UTC, 7 November 1982. **(b)** From 06:00 UTC, 7 November to 06:00 UTC, 8 November 1982. The area represented is shown in Fig. 1b (dashed box).

2528

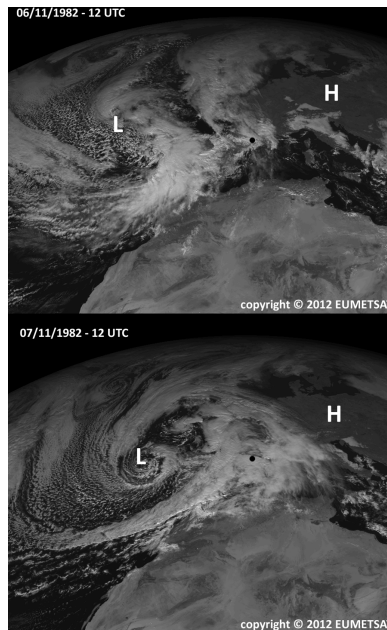


Fig. 4. Temporal evolution of the cloud cover over Europe observed in the visible channel from Meteosat-2 imagery. Top panel corresponds to 6 November 1982, 12:00 UTC and the bottom one 7 November 1982, 12:00 UTC. The black dot shows Andorra location, and the L and H identify centers of surface low and high pressure systems, respectively.

2529

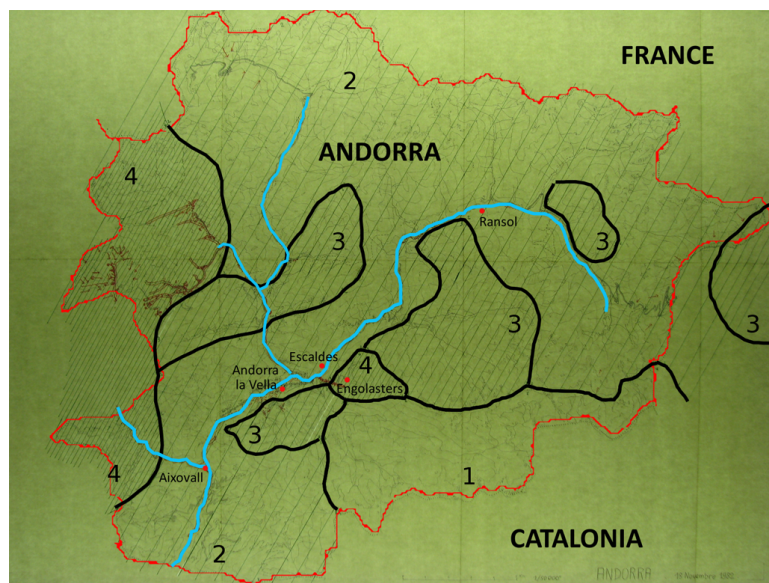


Fig. 5. Reproduction of Andorra zonation of rainfall intensity estimation resulting from the terrain analysis made in December 1982. Four categories are considered: (1) Normal rain: no significant terrain movement; (2) Moderate rain: strong current marks, overflows, some traces of gullies, but almost no mark resumption of erosion and accumulation; (3) Heavy precipitation: important but not catastrophic marks; (4) Extreme precipitation: catastrophic marks. Different locations mentioned in the text are shown. Adapted from Barthélemy (1982).

2530

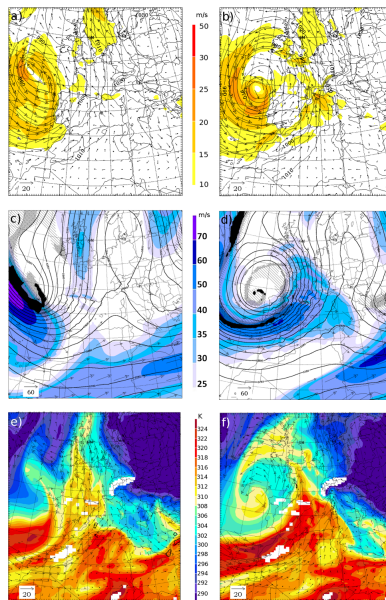


Fig. 6. Temporal evolution of the synoptic conditions: from 12:00 UTC, 6 November 1982 (first column) to 12:00 UTC, 7 November 1982 (second column). First row (**a, b**) shows mean sea level pressure (contour, hPa) and 10 m a.g.l. wind (shaded colours and arrows, m s^{-1}). Second row (**c, d**) shows 500 hPa geopotential height (black contour, m), 200 hPa wind speed (blue shaded colours and arrows, m s^{-1}) and 1.5 PVU surface height (black shaded corresponds to altitudes less than 4.5 km). Bottom row (**e, f**) shows 850 hPa equivalent potential temperature (shaded colours, K), 850 hPa wind (arrows, m s^{-1}) and CAPE (black isocontour of 500 J kg^{-1}).

2531

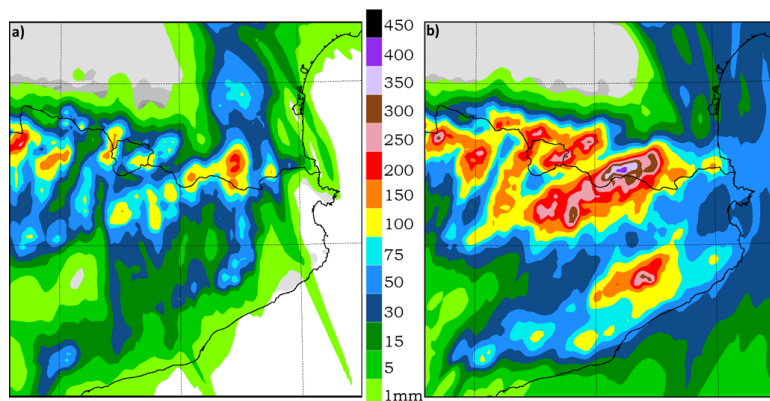


Fig. 7. Simulated 24 h accumulated precipitation (colour scale from 1 to 450 mm). Accumulations correspond to daily time periods: (**a**) from 06:00 UTC, 6 November to 06:00 UTC, 7 November 1982; (**b**) from 06:00 UTC, 7 November to 06:00 UTC, 8 November 1982. The area represented is shown in Fig. 1b (dashed box).

2532

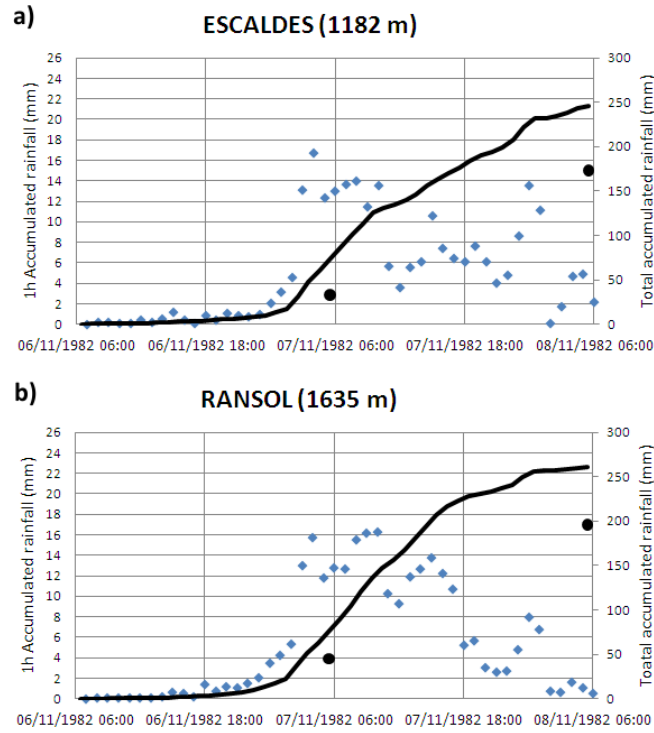


Fig. 8. Temporal evolution during the event of the 1 h simulated precipitation (blue dots, left axis in mm), the total accumulated precipitation simulated by the model (black line, right axis in mm) and observed rainfall accumulations from the beginning of the event (black dots, right axis in mm) in two weather stations located in Andorra: **(a)** Central (1182 m); **(b)** Ransol (1635 m). The location of these stations is shown in Fig. 5.

2533

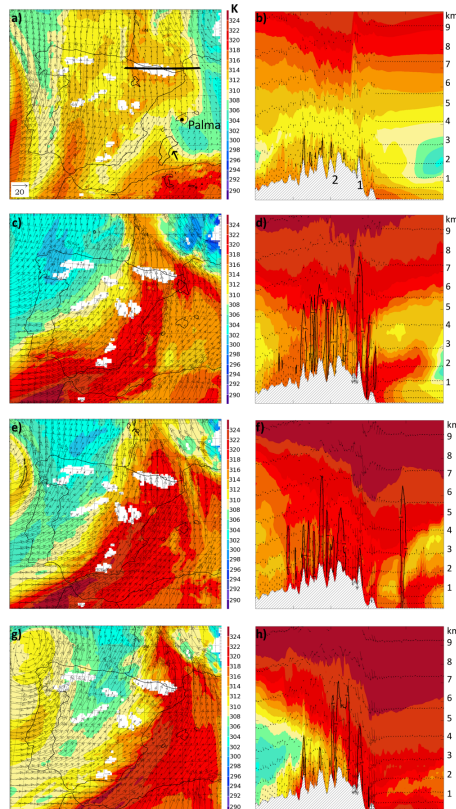


Fig. 9. Caption on next page.

2534

Fig. 9. Mesoscale evolution of different fields for each of episode phases: phase 1 at 12:00 UTC, 6 November 1982 (first row), phase 2 at 05:00 UTC, 7 November 1982 (second row), phase 3 at 12:00 UTC, 7 November 1982 (third row), phase 4 at 18:00 UTC, 7 November 1982 (fourth row). Left column (**a, c, e, g**) shows over the second domain (10 km) 850 hPa equivalent potential temperature (shaded, K), 850 hPa wind (arrows, ms^{-1} ; see panel a for reference vector) and CAPE computed for the most unstable parcel in the low levels (500 J kg^{-1} isocontour labeled and indicated with an arrow in **a**). Right column (**b, d, f, h**) shows the vertical cross section of the equivalent potential temperature (K) for the inner domain (2.5 km) along the axis labeled in **(a)** over the Pyrenees. Black isocontours indicate the total hydrometeor content greater than 1 g kg^{-1} and black arrows correspond to vertical velocity at different levels.

2535

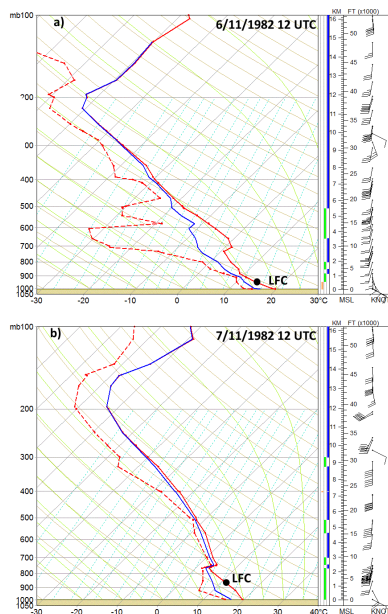


Fig. 10. Palma de Mallorca observed sounding: **(a)** 6 November 1982 at 12:00 UTC; **(b)** 7 November 1982 at 12:00 UTC. Vertical profiles of temperature ($^{\circ}\text{C}$, solid red line), dew point ($^{\circ}\text{C}$, dashed red line), wet bulb potential temperature ($^{\circ}\text{C}$, solid blue line) and wind (knots) are represented. Right coloured vertical bars show the stability conditions for the whole vertical profile (labelled in km). The stability correspondance for each colour is: blue stable; green) conditionally unstable; yellow: unstable. The level of free convection (LFC) is labelled as a black point.

2536

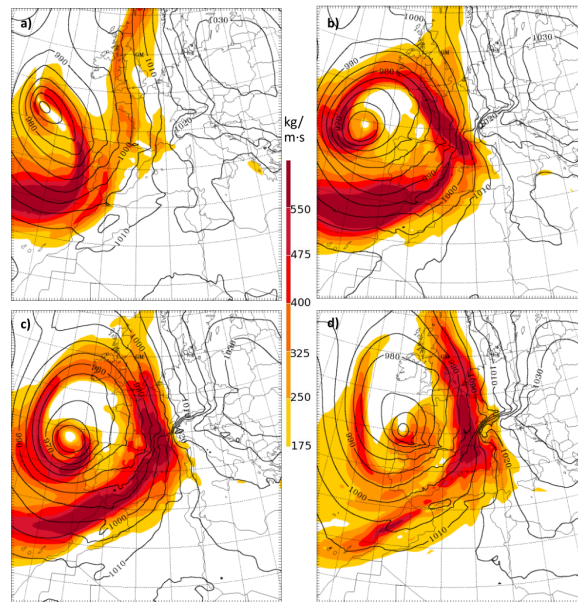


Fig. 11. Evolution of the water vapour flux integrated between the surface and 3 km of altitude (shaded colours, $\text{kg m}^{-1} \text{s}^{-1}$) and mean surface pressure (dark contours, hPa): **(a)** 12:00 UTC, 6 November 1982; **(b)** 04:00 UTC, 7 November 1982; **(c)** 12:00 UTC, 7 November 1982; **(d)** 00:00 UTC, 8 November 1982.

2537

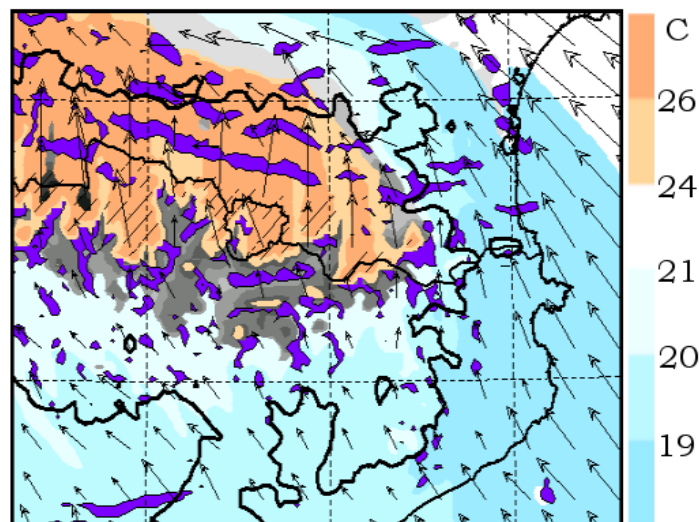


Fig. 12. Wind at 10 m a.g.l. (arrows, m s^{-1}), virtual potential temperature at 850 hPa (shaded colours, $^{\circ}\text{C}$), and areas with updrafts greater than 1 m s^{-1} at 1000 m (in violet) on the 6 November 1982 at 16:00 UTC. The 500 m topography is shown as a black solid contour.

2538

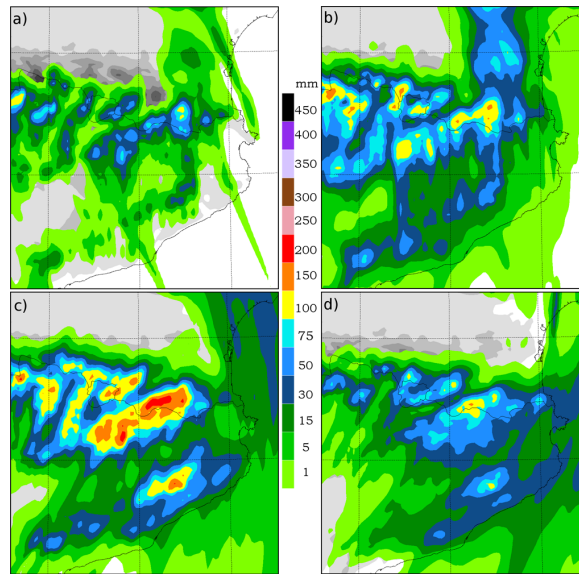


Fig. 13. Accumulated precipitation (mm) simulated for each of the episode phases: **(a)** Phase 1: from 06:00 UTC, 6 November to 00:00 UTC, 7 November 1982; **(b)** Phase 2: from 00:00 UTC, 7 November to 08:00 UTC, 7 November 1982; **(c)** Phase 3: from 08:00 UTC, 7 November to 18:00 UTC, 7 November 1982; **(d)** Phase 4: from 19:00 UTC, 7 November to 06:00 UTC, 8 November 1982.

2539

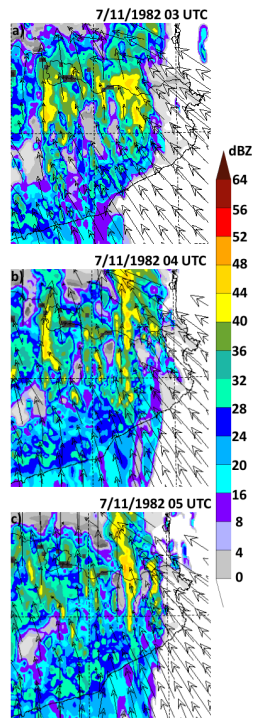


Fig. 14. Evolution during phase two of the simulated reflectivity at 2500m (shaded colours, dBZ) and 10 m a.g.l. wind (arrows, m s^{-1}).

2540

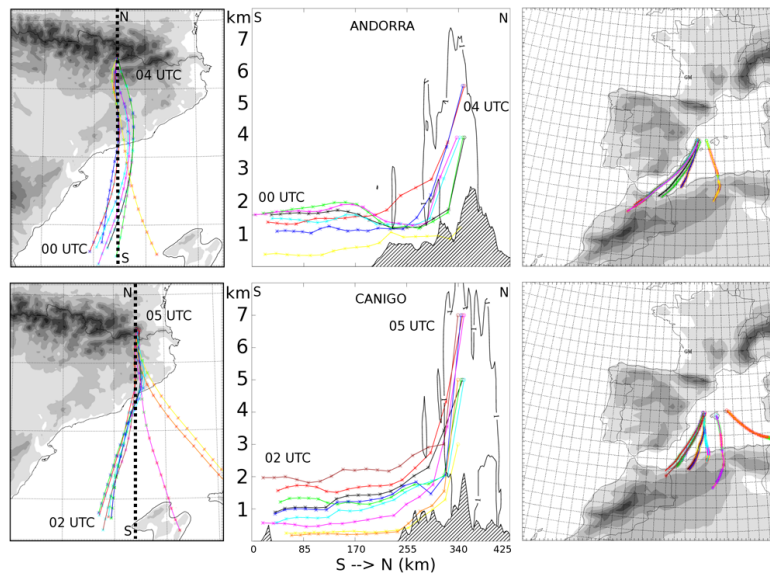


Fig. 15. Backward trajectories of some air parcels taken in the upper part of precipitating systems simulated over domain 2.5 km projected in an horizontal plane (left column) in Andorra (top panels) and Canigo Massif (bottom panels). The backward trajectories are also projected on a vertical cross-section (middle column) which follows the line SN displayed on the left panels. Right column shows the extension of the backward trajectories over the 40 km domain. Orography is superimposed in grey scale as in Fig. 1 and as a hatched area for the vertical cross sections.

2541

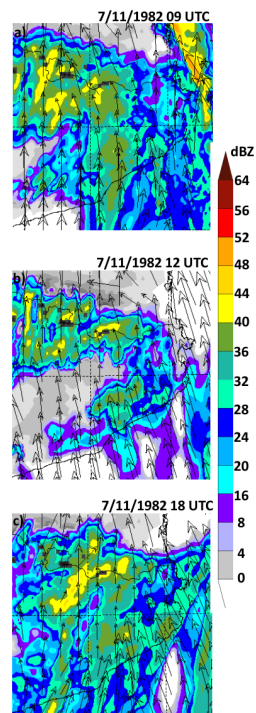


Fig. 16. Evolution during phase three of the simulated reflectivity at 2500 m (shaded colours, dBZ) and 10 m a.g.l. wind (arrows, m s^{-1}).

2542

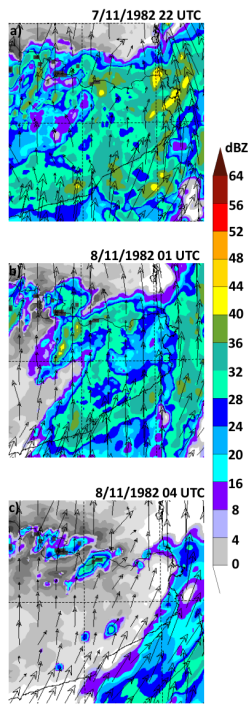


Fig. 19. Evolution during phase four of the simulated reflectivity at 2500 m (shaded colours, dBZ) and 10 m.a.g.l. wind (arrows, m s^{-1}).