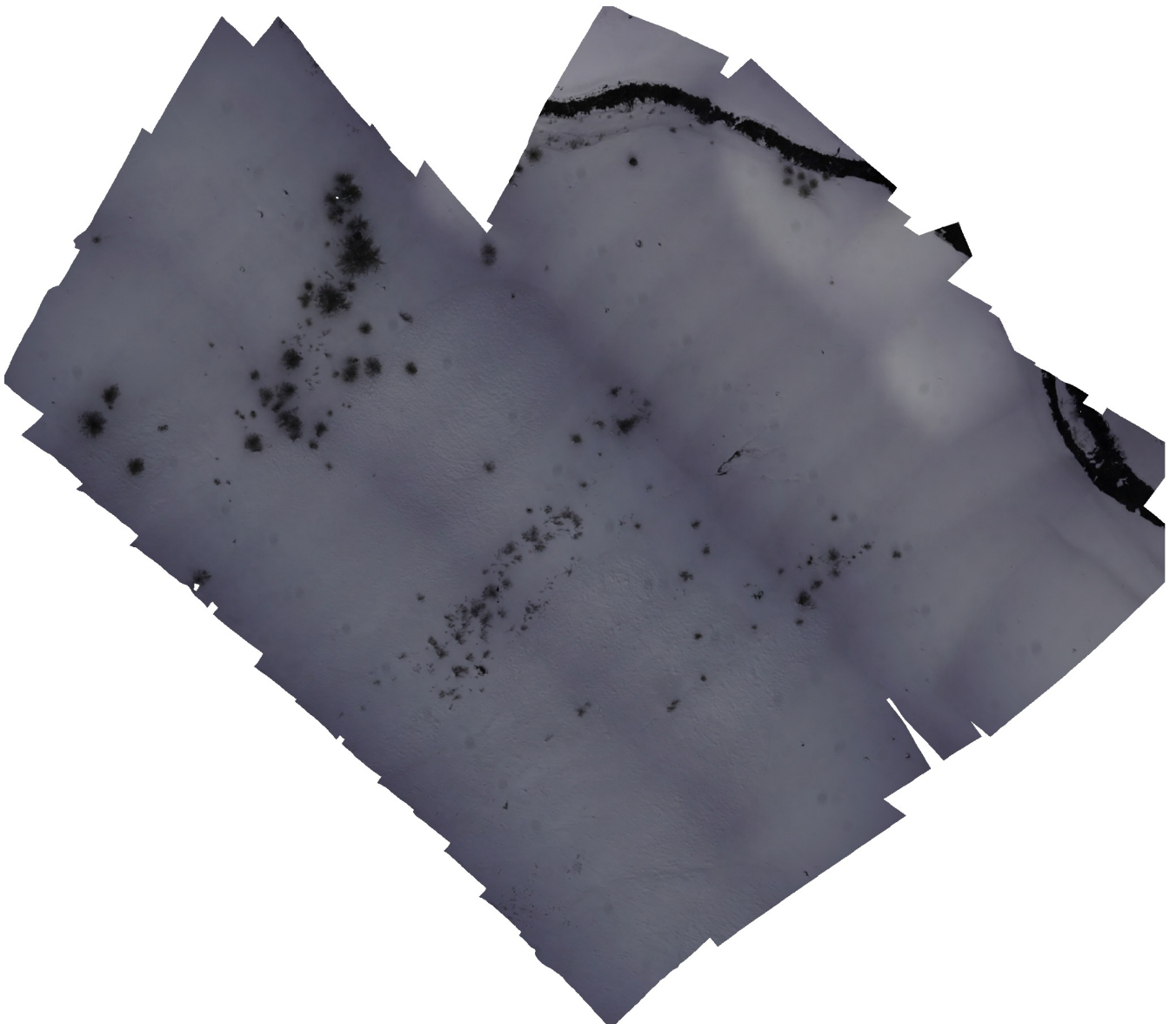


Coverage Planning Full dataset

Processing Report
29 August 2025



Survey Data

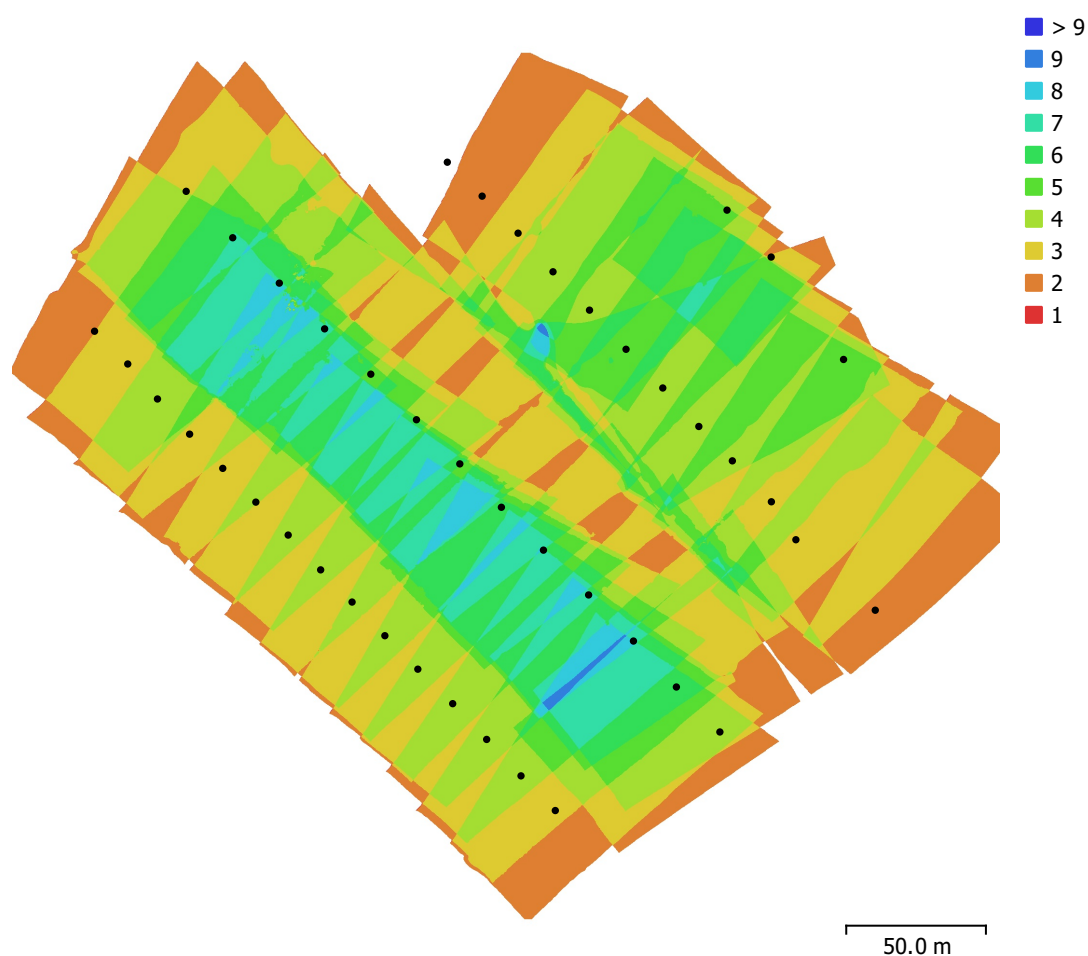


Fig. 1. Camera locations and image overlap.

Number of images:	47	Camera stations:	43
Flying altitude:	93.7 m	Tie points:	28,684
Ground resolution:	1.03 cm/pix	Projections:	69,756
Coverage area:	0.0632 km ²	Reprojection error:	1.75 pix

Camera Model	Resolution	Focal Length	Pixel Size	Precalibrated
ILCE-7RM4, FE 35mm F2...	9504 x 6336	35 mm	3.79 x 3.79 μm	No

Table 1. Cameras.

Camera Calibration

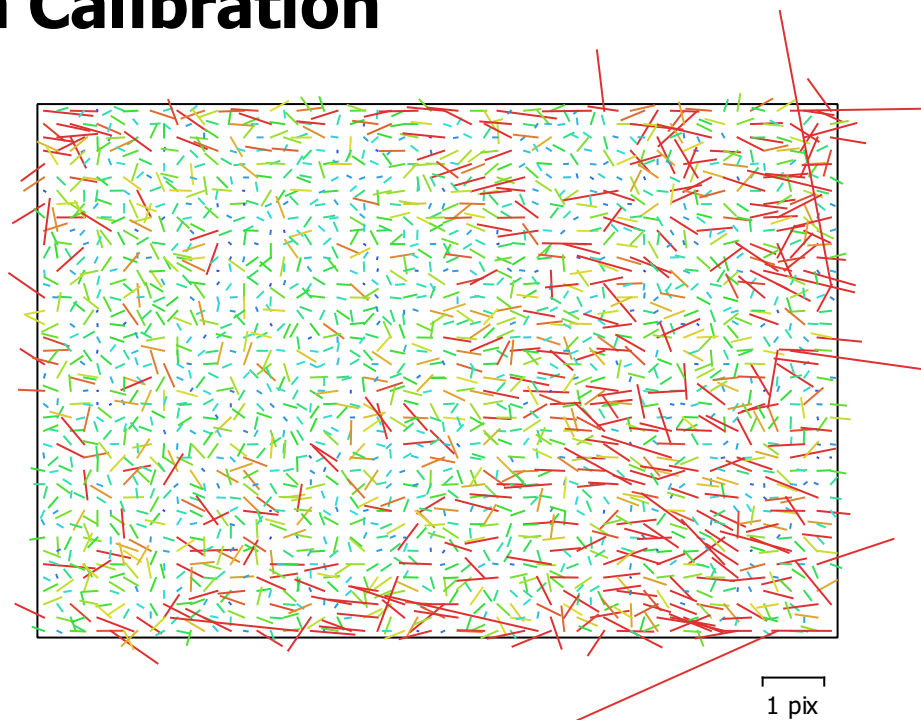


Fig. 2. Image residuals for ILCE-7RM4, FE 35mm F2.8 ZA (35mm).

ILCE-7RM4, FE 35mm F2.8 ZA (35mm)

47 images

Type	Resolution	Focal Length	Pixel Size
Frame	9504 x 6336	35 mm	3.79 x 3.79 μm

	Value	Error	F	Cx	Cy	K1	K2	K3	P1	P2
F	9528.84	6.4	1.00	-0.26	-0.33	0.65	-0.21	-0.10	-0.42	-0.42
Cx	-35.9425	1.3		1.00	0.26	-0.18	0.12	-0.03	0.11	0.14
Cy	-20.6094	1.6			1.00	-0.17	0.07	0.03	0.13	0.57
K1	0.0544619	0.00058				1.00	-0.74	0.49	-0.42	-0.36
K2	-0.242295	0.0024					1.00	-0.93	0.10	0.04
K3	0.0250792	0.0044						1.00	0.03	0.09
P1	0.000589026	3.5e-05							1.00	0.32
P2	-0.000891449	4.8e-05								1.00

Table 2. Calibration coefficients and correlation matrix.

Camera Locations

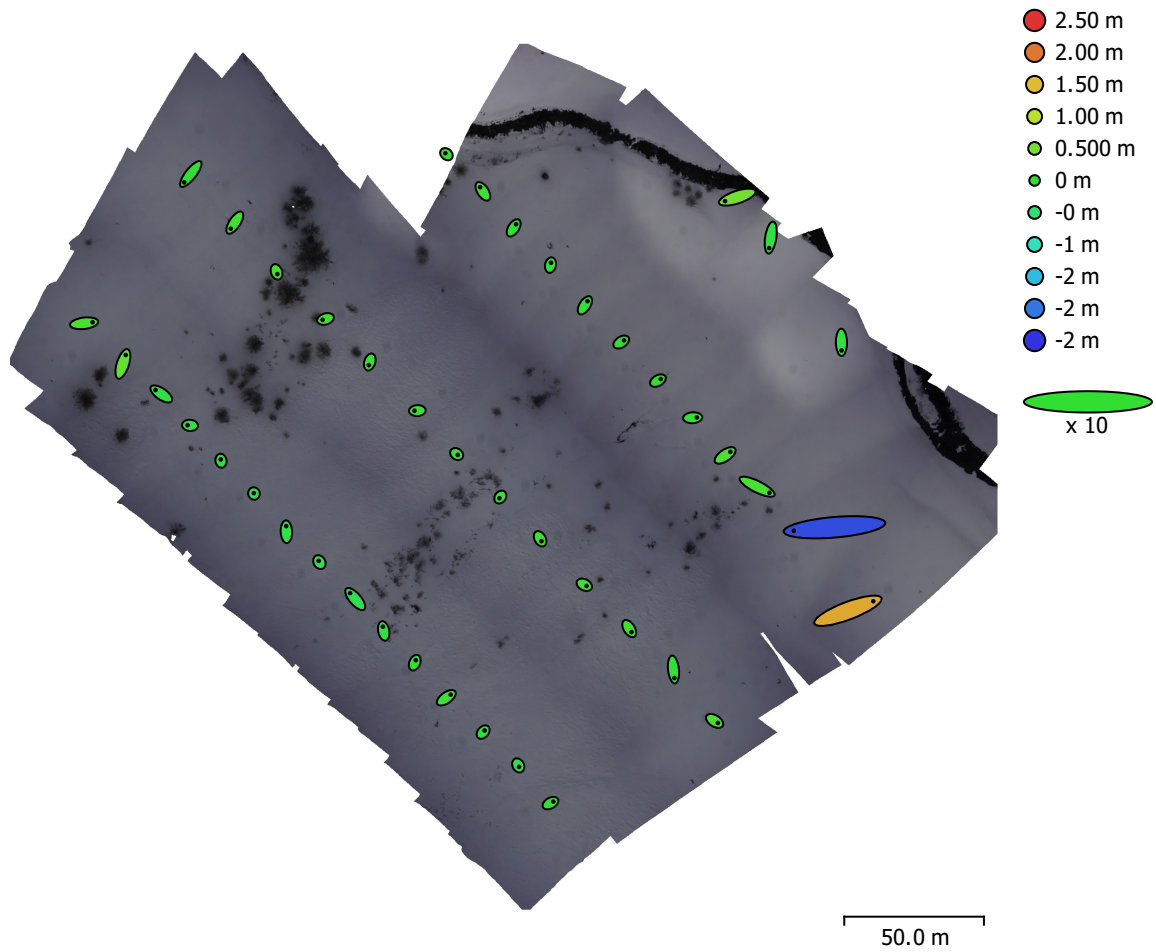


Fig. 3. Camera locations and error estimates.

Z error is represented by ellipse color. X,Y errors are represented by ellipse shape.

Estimated camera locations are marked with a black dot.

X error (cm)	Y error (cm)	Z error (cm)	XY error (cm)	Total error (cm)
59.3939	31.5394	45.6011	67.2486	81.2516

Table 3. Average camera location error.

X - Longitude, Y - Latitude, Z - Altitude.

Digital Elevation Model

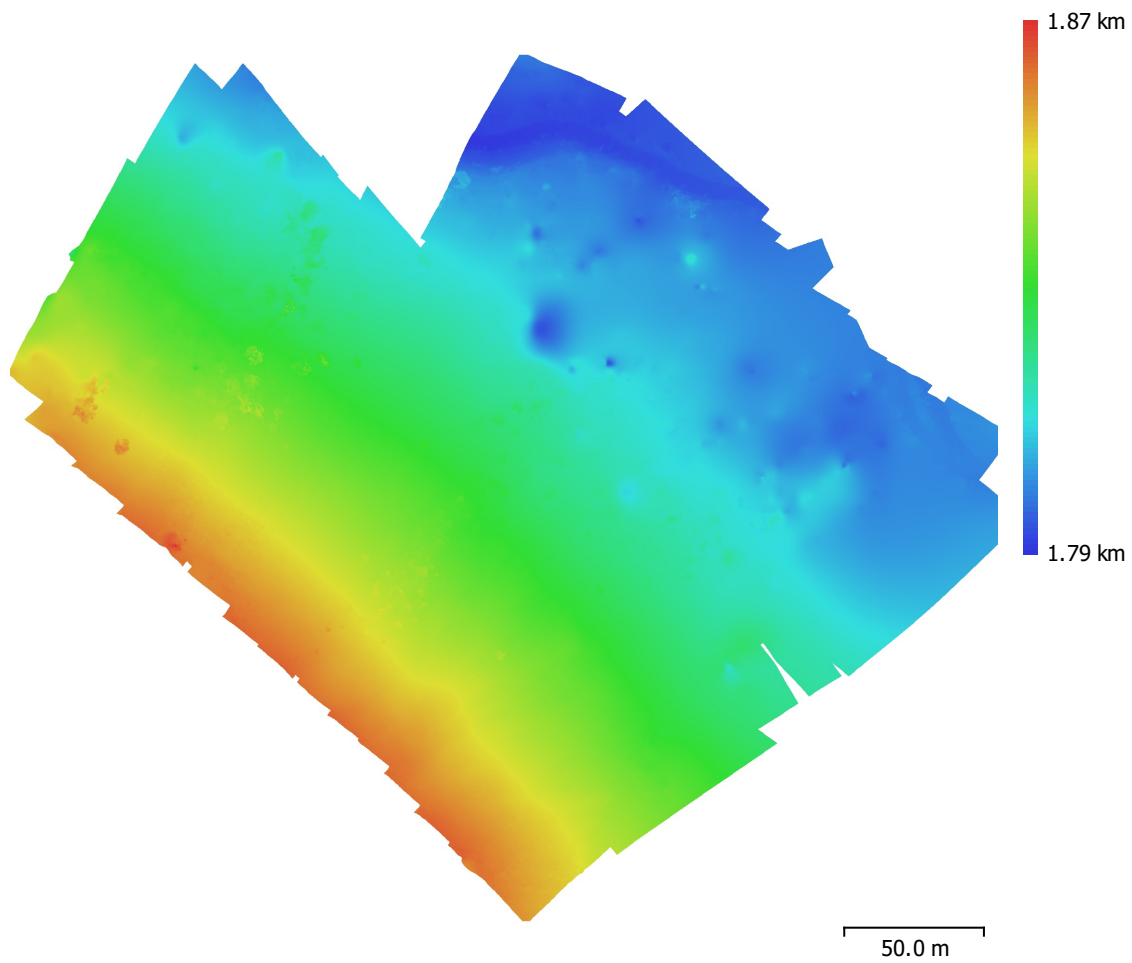


Fig. 4. Reconstructed digital elevation model.

Resolution: 2.06 cm/pix
Point density: 0.236 points/cm²

Processing Parameters