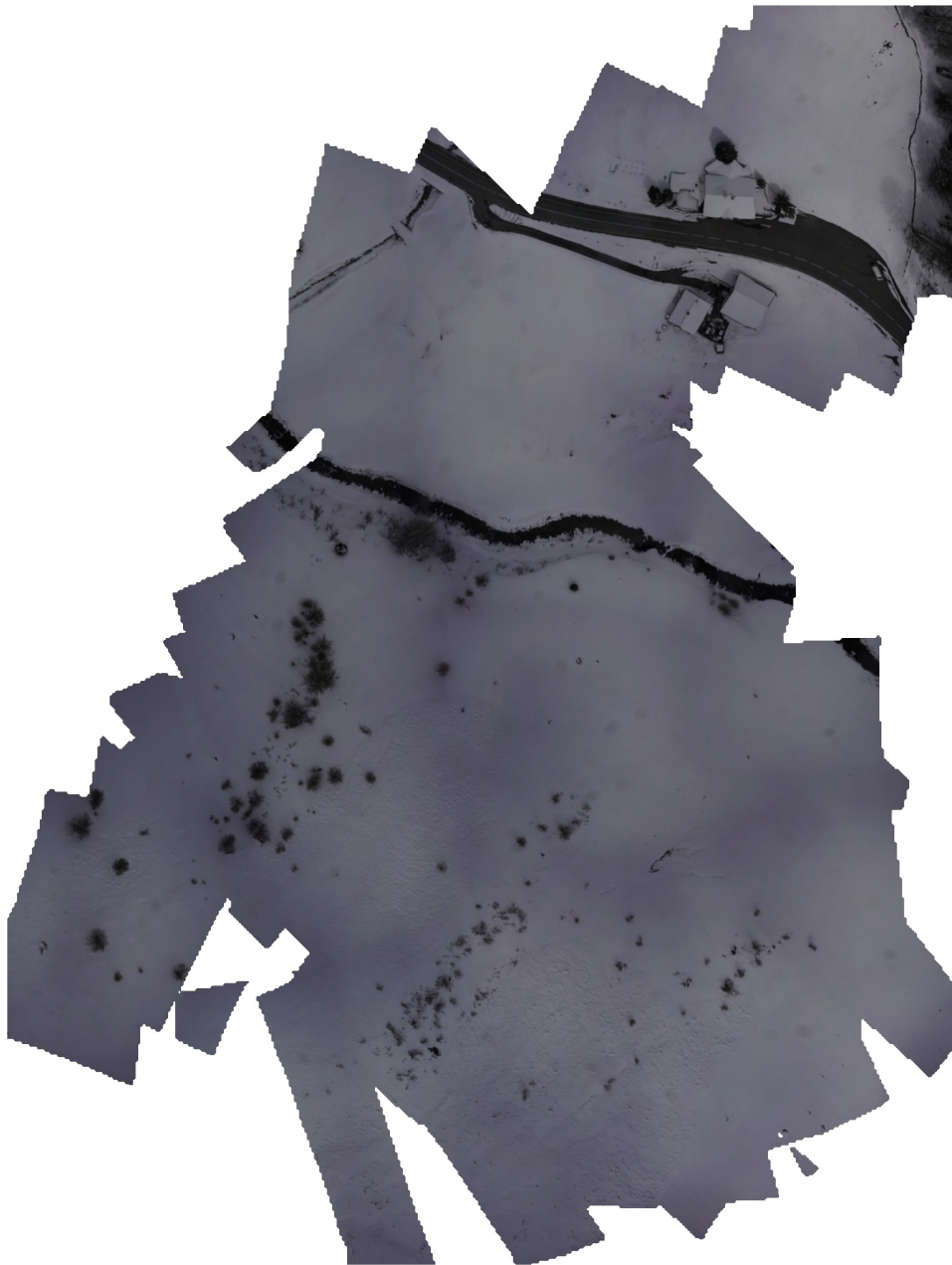


Active Planning Partial dataset

Processing Report
29 August 2025



Survey Data

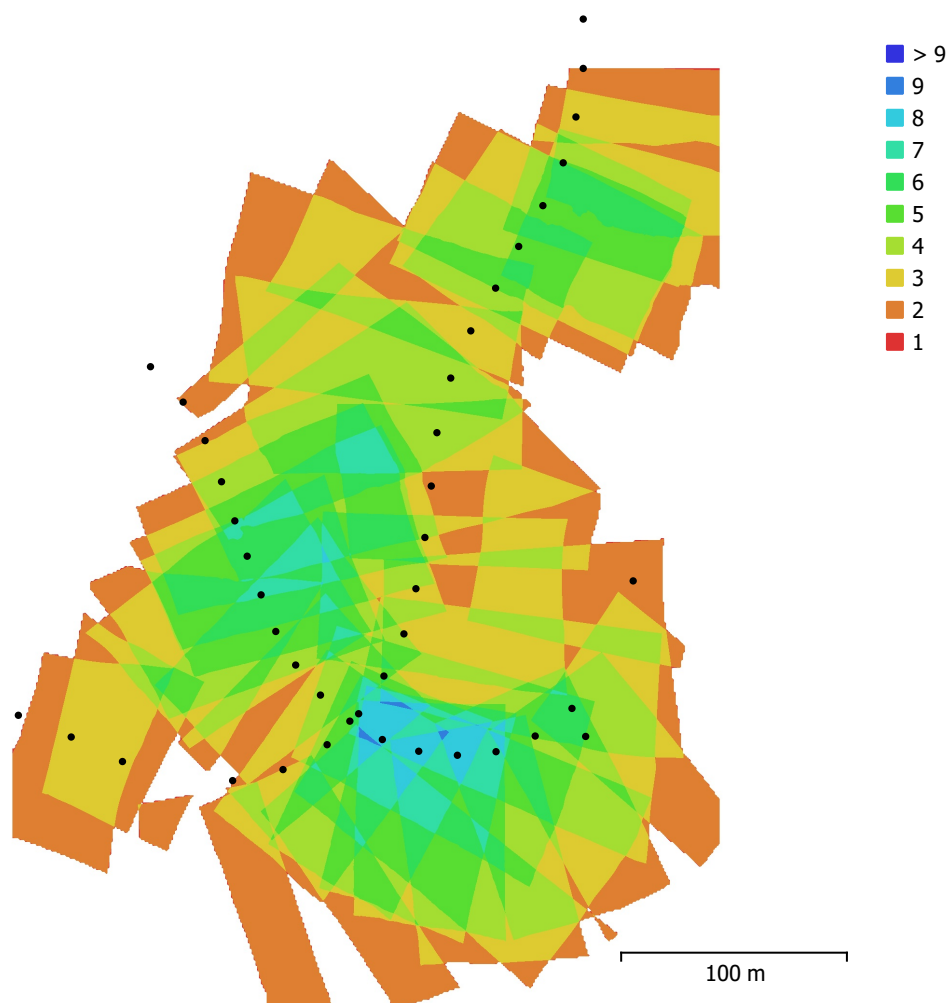


Fig. 1. Camera locations and image overlap.

Number of images:	67	Camera stations:	41
Flying altitude:	107 m	Tie points:	28,404
Ground resolution:	1.11 cm/pix	Projections:	80,151
Coverage area:	0.0811 km ²	Reprojection error:	2 pix

Camera Model	Resolution	Focal Length	Pixel Size	Precalibrated
ILCE-7RM4, FE 35mm F2...	9504 x 6336	35 mm	3.79 x 3.79 μm	No

Table 1. Cameras.

Camera Calibration

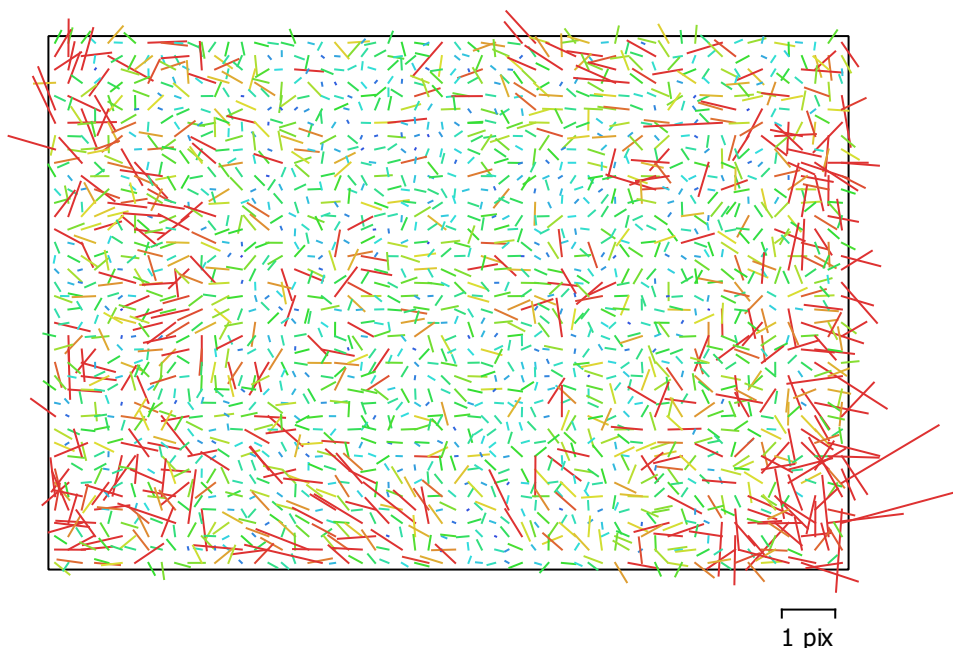


Fig. 2. Image residuals for ILCE-7RM4, FE 35mm F2.8 ZA (35mm).

ILCE-7RM4, FE 35mm F2.8 ZA (35mm)

67 images

Type	Resolution	Focal Length	Pixel Size
Frame	9504 x 6336	35 mm	3.79 x 3.79 μm

	Value	Error	F	Cx	Cy	K1	K2	K3	P1	P2
F	9663	2.1	1.00	-0.31	0.42	0.29	-0.02	-0.09	-0.09	0.40
Cx	-35.5273	0.74		1.00	-0.03	-0.11	0.04	-0.02	0.64	0.06
Cy	-40.2525	0.98			1.00	0.13	0.02	-0.08	-0.14	0.86
K1	0.0618007	0.00036				1.00	-0.92	0.82	-0.12	0.18
K2	-0.277702	0.0023					1.00	-0.98	0.02	-0.00
K3	0.0664887	0.0046						1.00	-0.00	-0.06
P1	-0.000785458	2e-05							1.00	-0.13
P2	-0.000923593	2.9e-05								1.00

Table 2. Calibration coefficients and correlation matrix.

Camera Locations

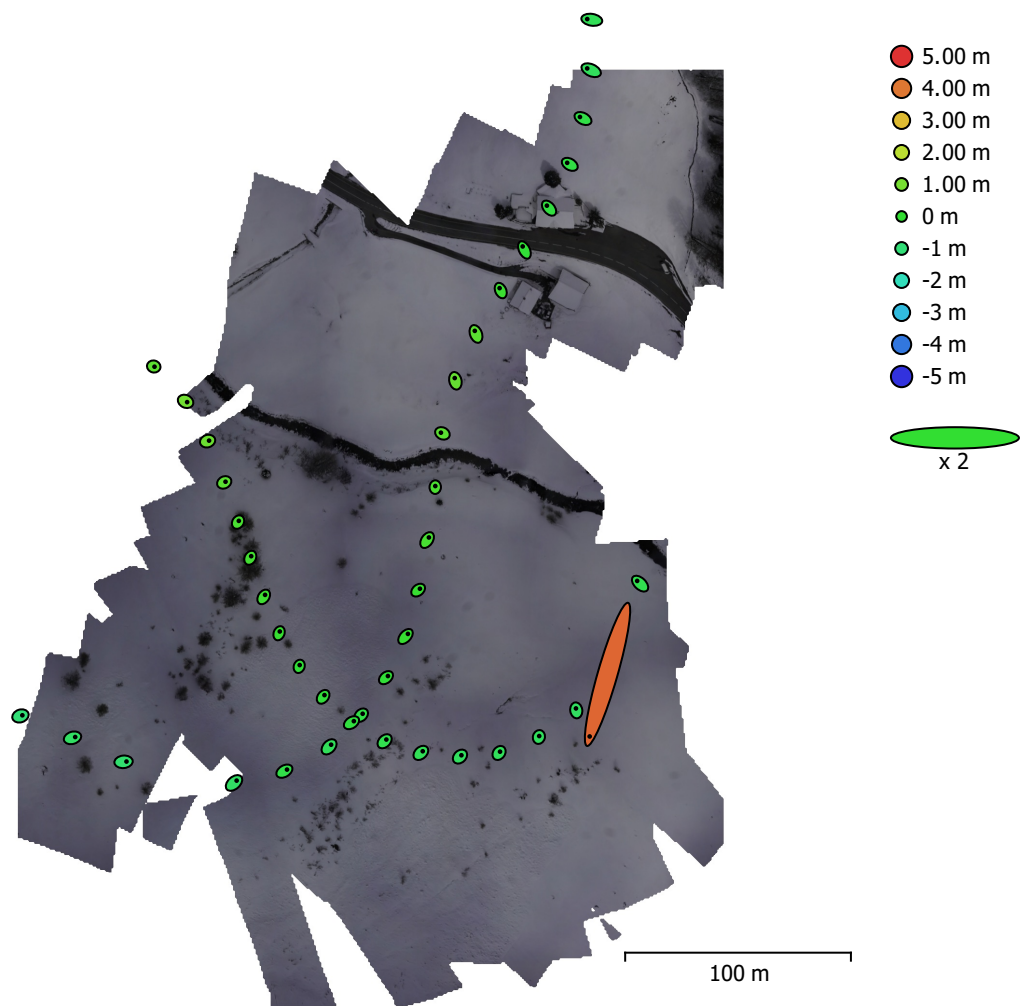


Fig. 3. Camera locations and error estimates.

Z error is represented by ellipse color. X,Y errors are represented by ellipse shape.
Estimated camera locations are marked with a black dot.

X error (m)	Y error (m)	Z error (m)	XY error (m)	Total error (m)
1.50964	4.36402	0.833705	4.61775	4.69241

Table 3. Average camera location error.

X - Longitude, Y - Latitude, Z - Altitude.

Digital Elevation Model

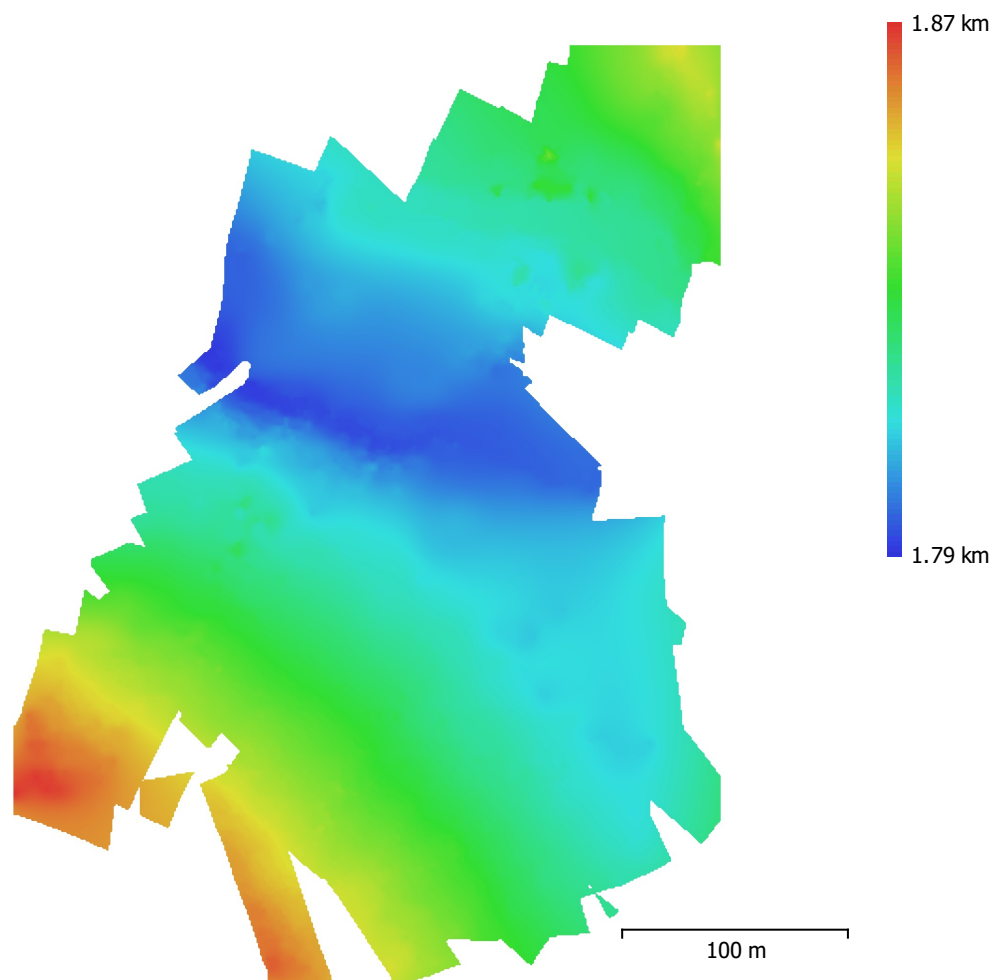


Fig. 4. Reconstructed digital elevation model.

Resolution: 83.0 cm/pix
Point density: 1.45 points/m²

Processing Parameters

General

Images	67
Aligned images	41
Coordinate system	WGS 84 (EPSG::4326)
Rotation angles	Yaw, Pitch, Roll

Tie Points

Points	28,404 of 42,829
RMS reprojection error	0.169908 (2.00008 pix)
Max reprojection error	0.520625 (41.1745 pix)
Mean key point size	11.6725 pix
Point colors	3 bands, uint8
Key points	No
Average tie point multiplicity	2.66798

Alignment parameters

Accuracy	High
Generic preselection	No
Reference preselection	No
Key point limit	40,000
Key point limit per Mpx	1,000
Tie point limit	4,000
Exclude stationary tie points	No
Guided image matching	No
Adaptive camera model fitting	No
Matching time	30 seconds
Matching memory usage	1.41 GB
Alignment time	57 seconds
Alignment memory usage	97.47 MB
Date created	2024:08:08 10:59:19
Software version	2.1.2.18358
File size	2.52 MB

DEM

Size	377 x 500
Resolution	83.0 cm/pix
Coordinate system	WGS 84 (EPSG::4326)

Reconstruction parameters

Source data	Tie points
Interpolation	Enabled
Processing time	3 seconds
Memory usage	6.14 MB
Date created	2024:08:08 11:32:03
Software version	2.1.2.18358
File size	552.88 KB

Orthomosaic

Size	15,648 x 14,252
Resolution	2.46 cm/pix
Coordinate system	WGS 84 (EPSG::4326)
Colors	3 bands, uint8
Orthophotos	150.21 MB

Reconstruction parameters

Blending mode	Mosaic
---------------	--------

Surface	DEM
Enable hole filling	Yes
Enable ghosting filter	No
Processing time	1 minutes 40 seconds
Memory usage	1.66 GB
Date created	2024:08:08 11:33:19
Software version	2.1.2.18358
File size	211.46 MB

System

Software name	Agisoft Metashape Professional
Software version	2.2.0 build 19890
OS	Windows 64 bit
RAM	31.72 GB
CPU	Intel(R) Core(TM) i9-14900K
GPU(s)	NVIDIA GeForce RTX 4060