



Supplement of

Early identification of reservoir-bank landslides in deeply incised mountain canyon areas with interferometric baseline optimization

Wenfei Xi et al.

Correspondence to: Wenfei Xi (wenfeixi@ynnu.edu.cn) and Wenyu Hong (2323130105@ynnu.edu.cn)

The copyright of individual parts of the supplement might differ from the article licence.

Supplements

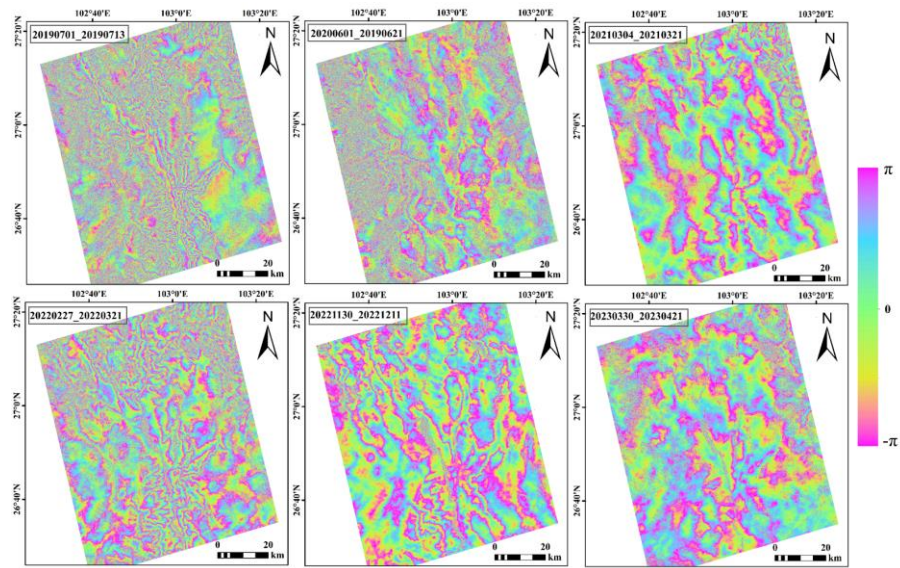


Figure S1: Partial Hyp3 Interferogram Stack Covering the Study Area

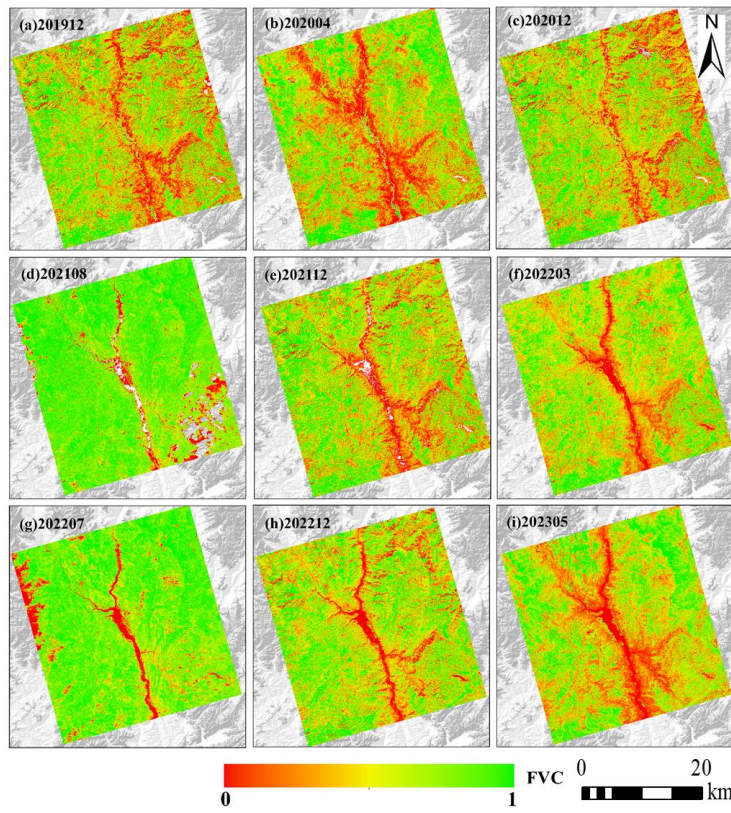


Figure S2: Temporal Vegetation Coverage in Partial Areas of the Study Region