



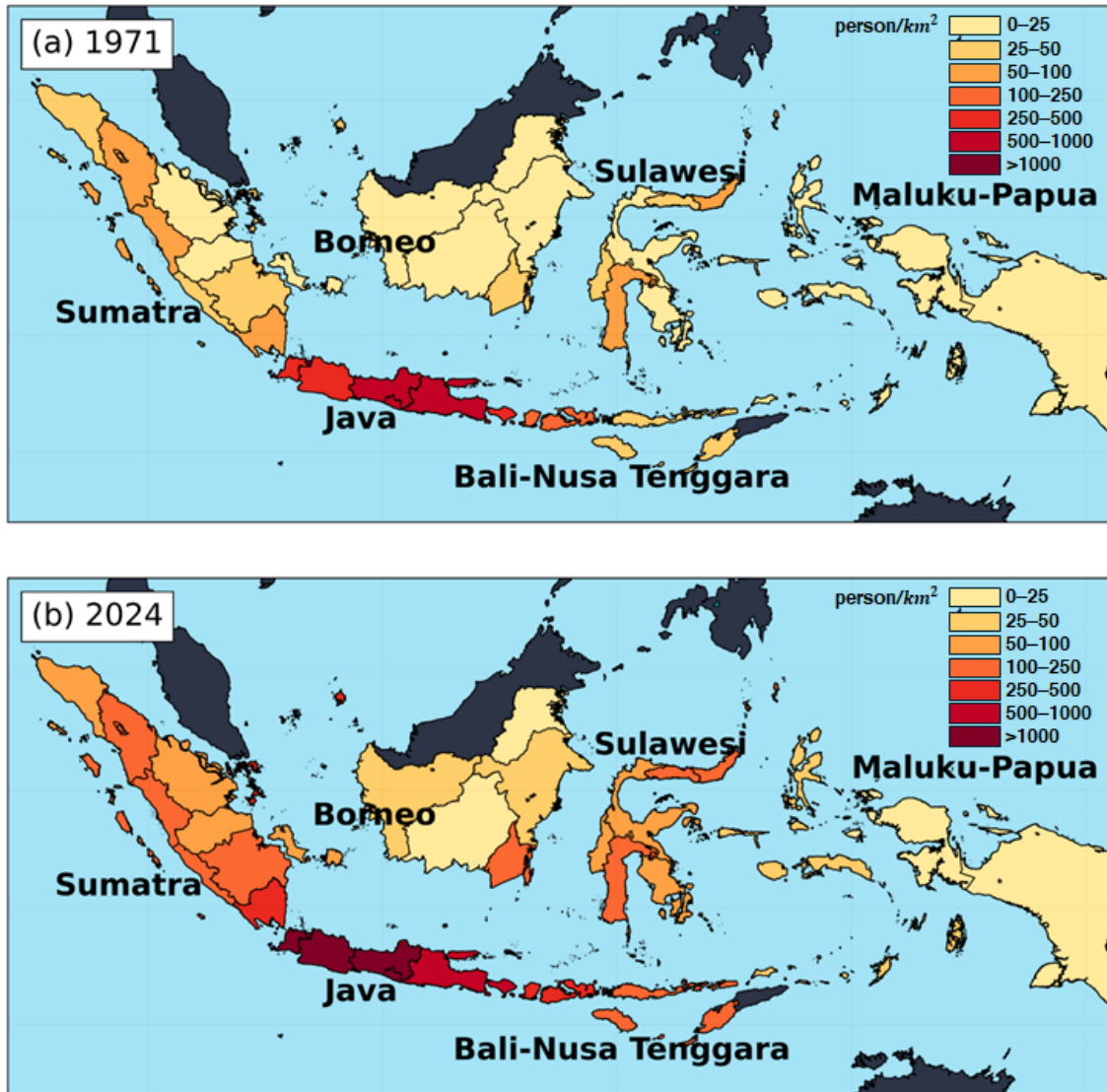
*Supplement of*

## **Indonesia tornado database: tornado climatology of Indonesia**

**Irfans Maulana Firdaus et al.**

*Correspondence to:* Irfans Maulana Firdaus (firdaus.irfans.maulana.q6@dc.tohoku.ac.jp)

The copyright of individual parts of the supplement might differ from the article licence.



**Figure S1.** The population density of Indonesia (person/km<sup>2</sup>) for two distinct periods: (a) 1971, (b) 2024 (BPS, 2021, 2024).

## References

BPS: Jumlah Penduduk Hasil Sensus Penduduk (SP) dan Survei Penduduk Antar Sensus (SUPAS) menurut Provinsi, 1971 - 2015, accessed 27 March 2025, <https://www.bps.go.id/id/statistics-table/1/MTI2NyMx/jumlah-penduduk--hasil-sensus-penduduk--sp--dan-survei-penduduk-antar-sensus--supas--menurut-provinsi--1971---2015.html>,

5 2021.

BPS: Statistik Indonesia 2024 (Statistical Yearbook of Indonesia 2024), BPS-Statistics Indonesia, 2024.



**Figure S2.** The population growth of Indonesia. The population growth of Indonesia is calculated by dividing the population Indonesia in 2024 and 1971.