



Supplement of

Testing the 2020 European Seismic Hazard Model (ESHM20) against observations from Romania

Elena F. Manea et al.

Correspondence to: Elena F. Manea (flory.manea88@gmail.com) and Laurentiu Danciu (laurentiu.danciu@sed.ethz.ch)

The copyright of individual parts of the supplement might differ from the article licence.

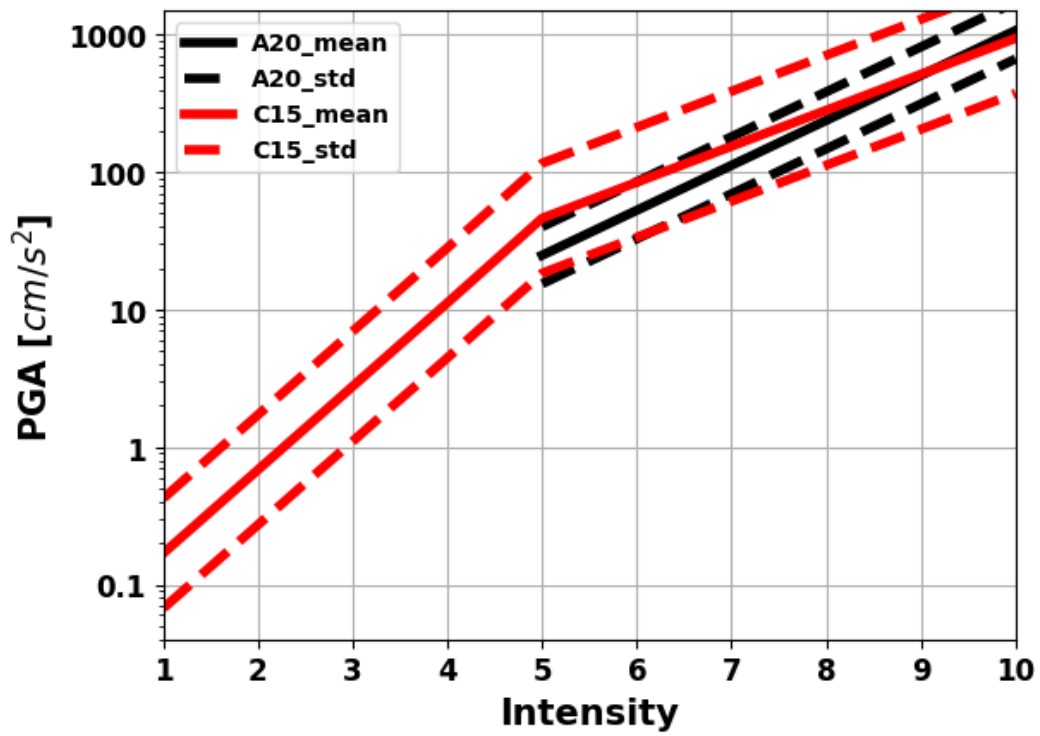


Figure S1. The distribution of the MSK-64 Intensity to PGA conversions for the two selected equations (Ardeleanu et al., 2020 – A20 and Caprio et al., 2015 – C15) and their corresponding standard deviations.

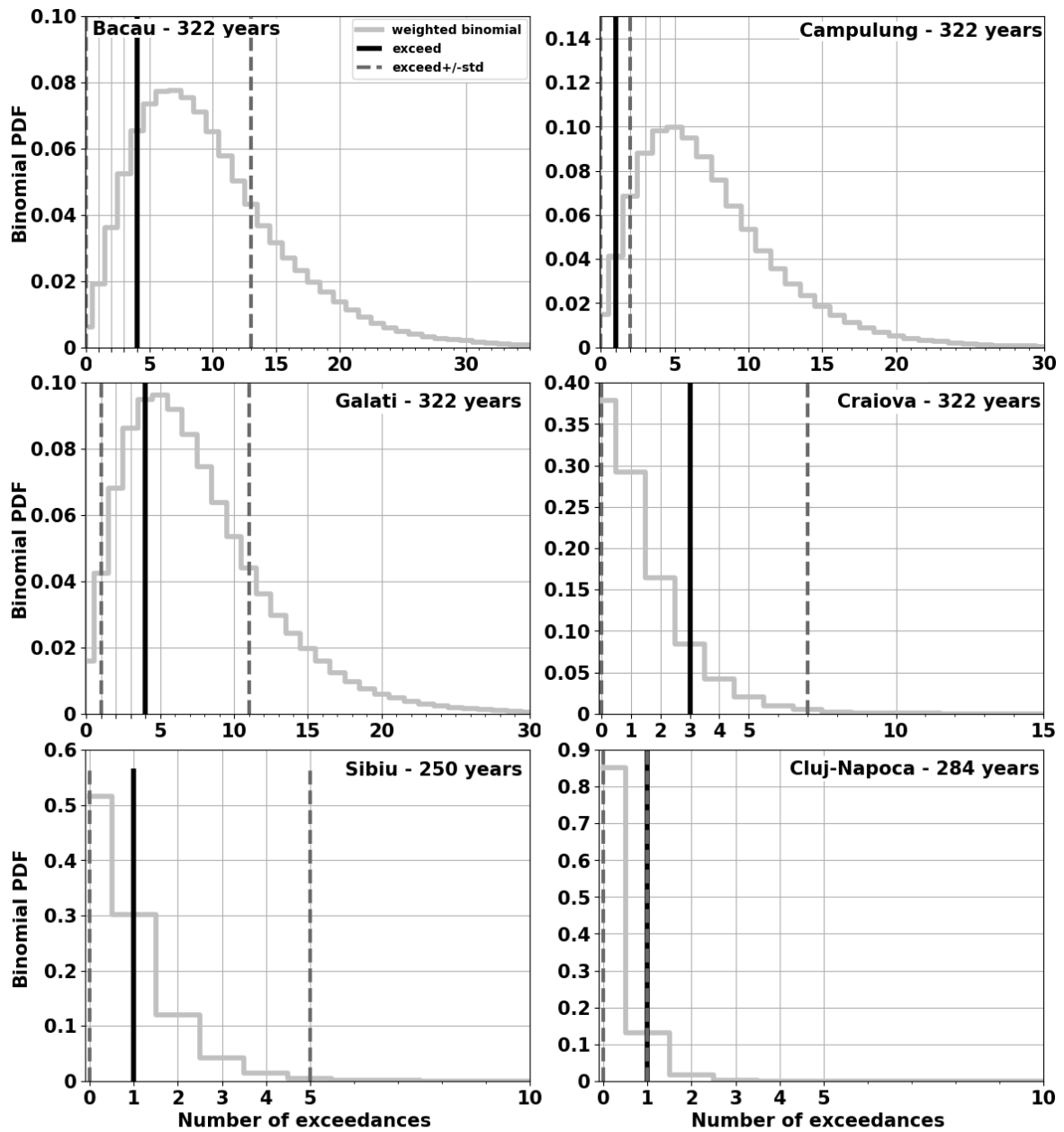


Figure S2. Consistency test results of ESHM20 with the observed PGA values at 0.1 g for Romanian cities. Where: ESHM weighted mean predicted - histogram, the observed number of exceedances - black line and its one sigma variability - dashed vertical lines; the total completeness time is specified in each subplot for their respective city.

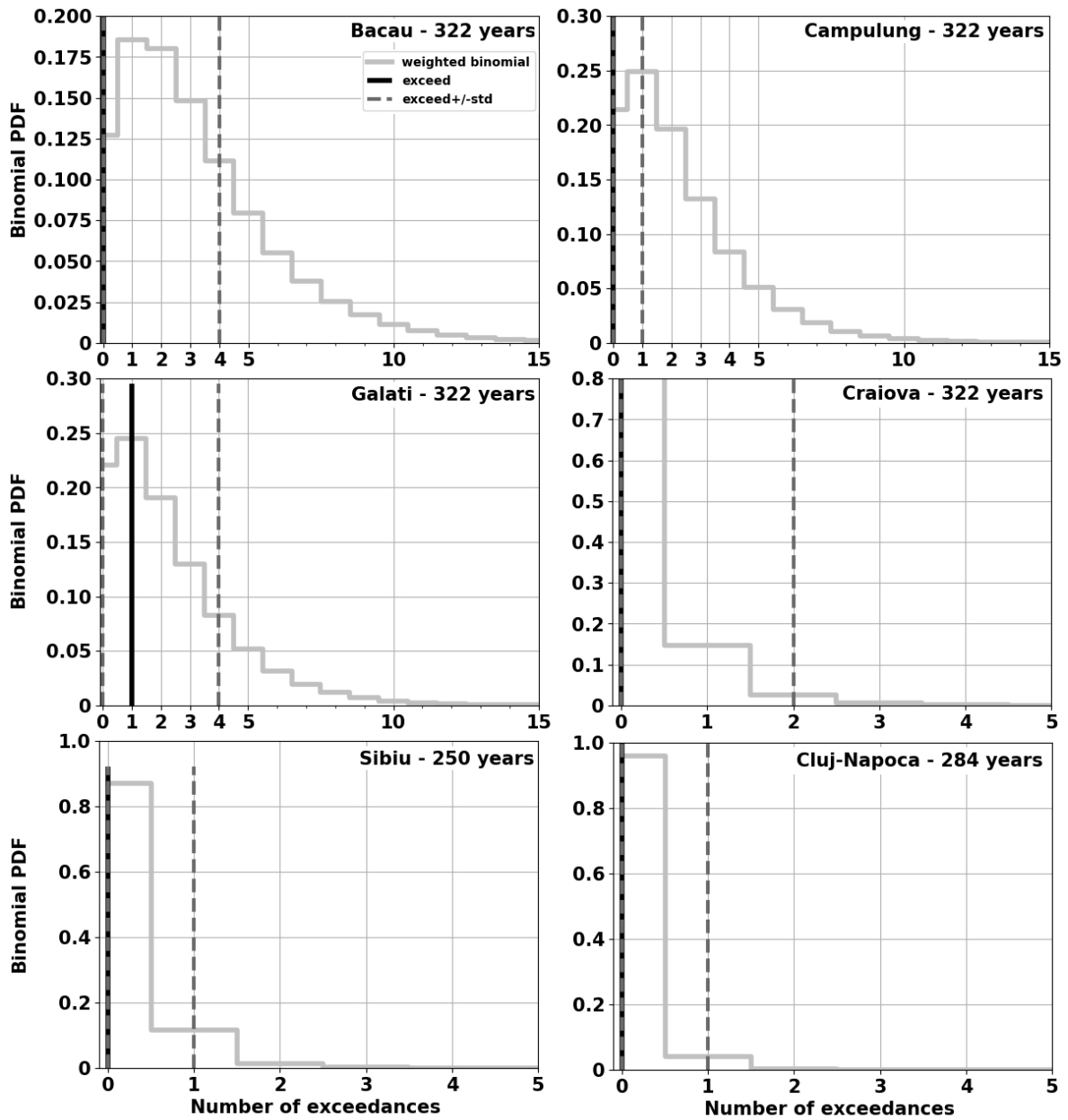


Figure S3. Consistency test results of ESHM20 with the observed PGA values at 0.2 g for Romanian cities. Where: ESHM weighted mean predicted - histogram, the observed number of exceedances - black line and its one sigma variability - dashed vertical lines; the total completeness time is specified in each subplot for their respective city.