



Supplement of

Statistical calibration of probabilistic medium-range Fire Weather Index forecasts in Europe

Stephanie Bohlmann and Marko Laine

Correspondence to: Marko Laine (marko.laine@fmi.fi)

The copyright of individual parts of the supplement might differ from the article licence.

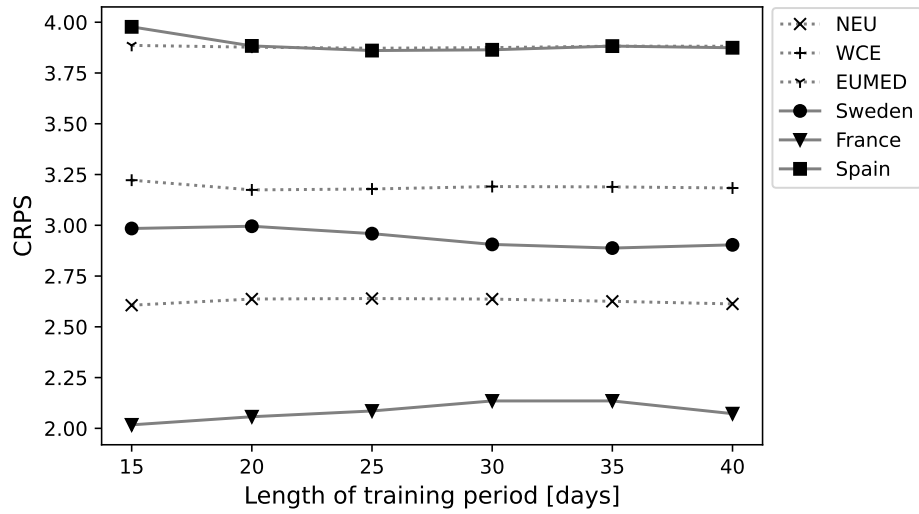


Figure S1. Mean continuous ranked probability score (CRPS) of calibrated FWI forecast for the verification period June-July 2021 over the respective training period and all lead times. Dashed lines represent the larger training areas using in this article (NEU, WCE, EUMED). Solid lines show examples of smaller training areas, i.e. countries.

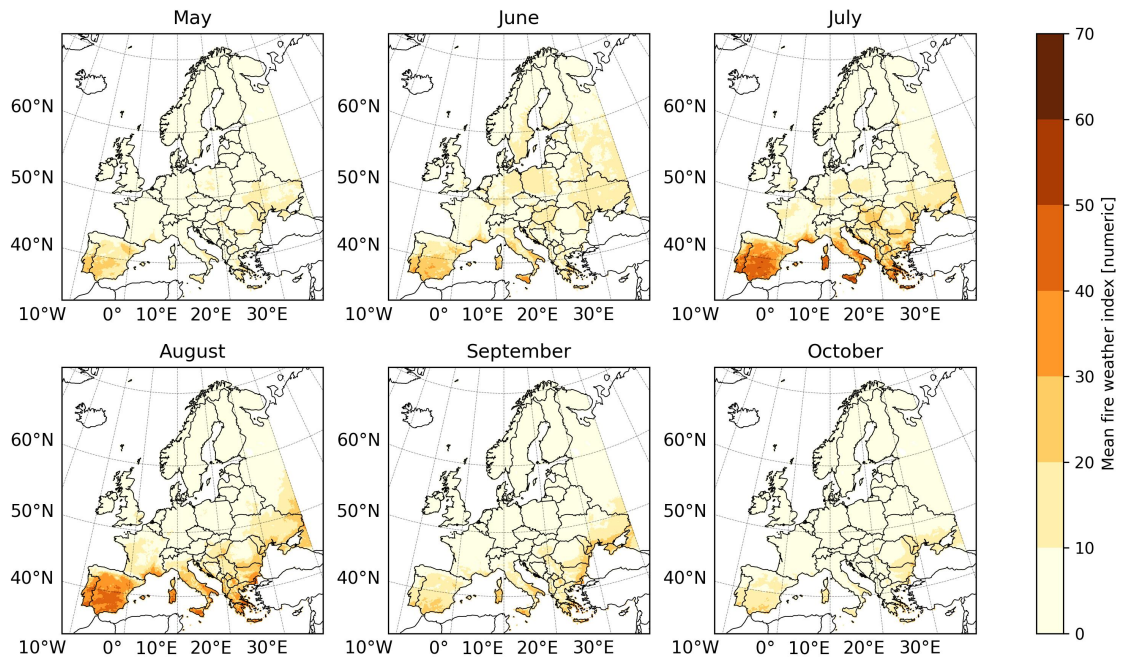


Figure S2. Mean fire weather index for each month, based on the FWI analysis for the years 2021–2023.

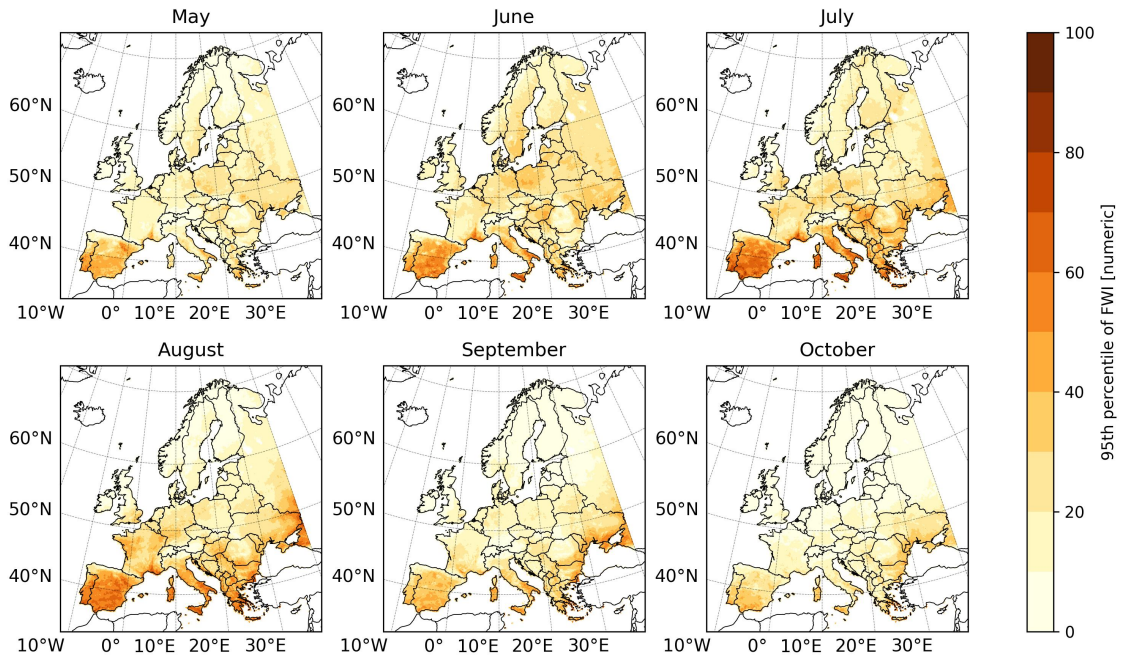


Figure S3. 95th percentile of fire weather index for each month, based on the FWI analysis for the years 2021–2023.

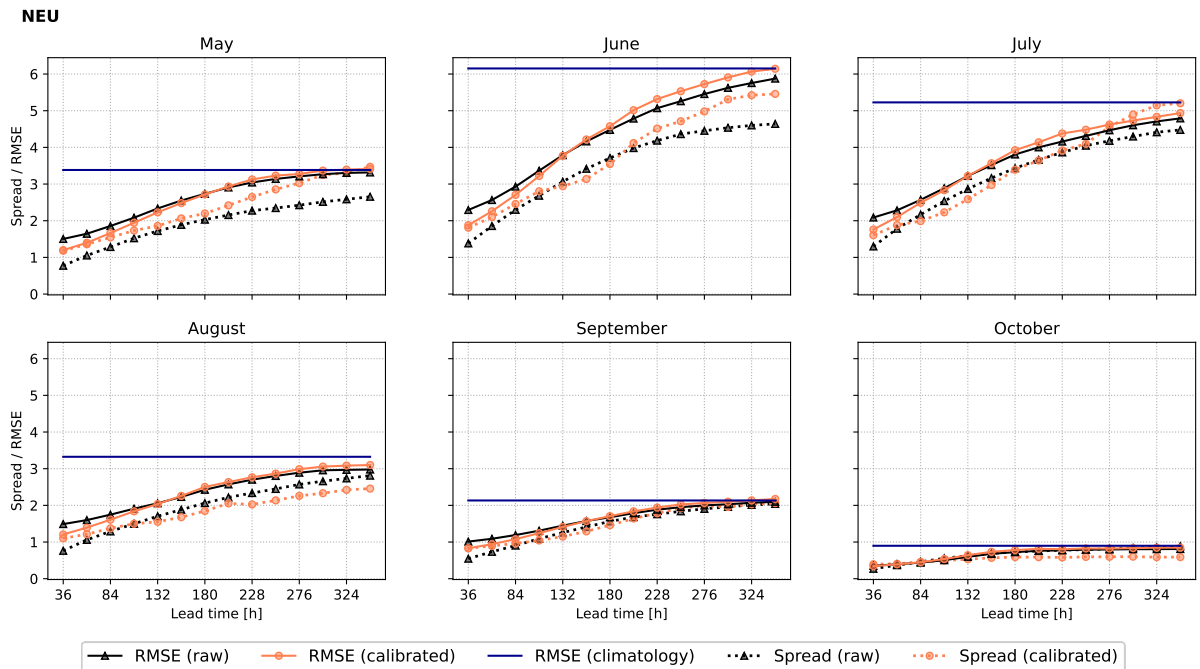
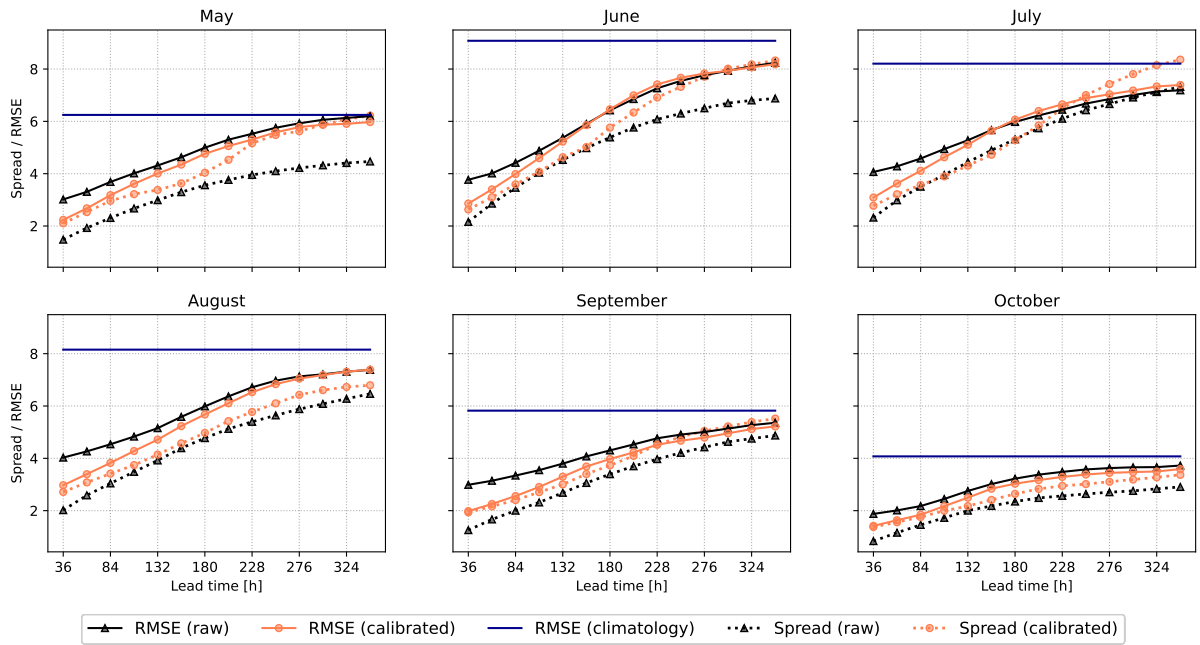
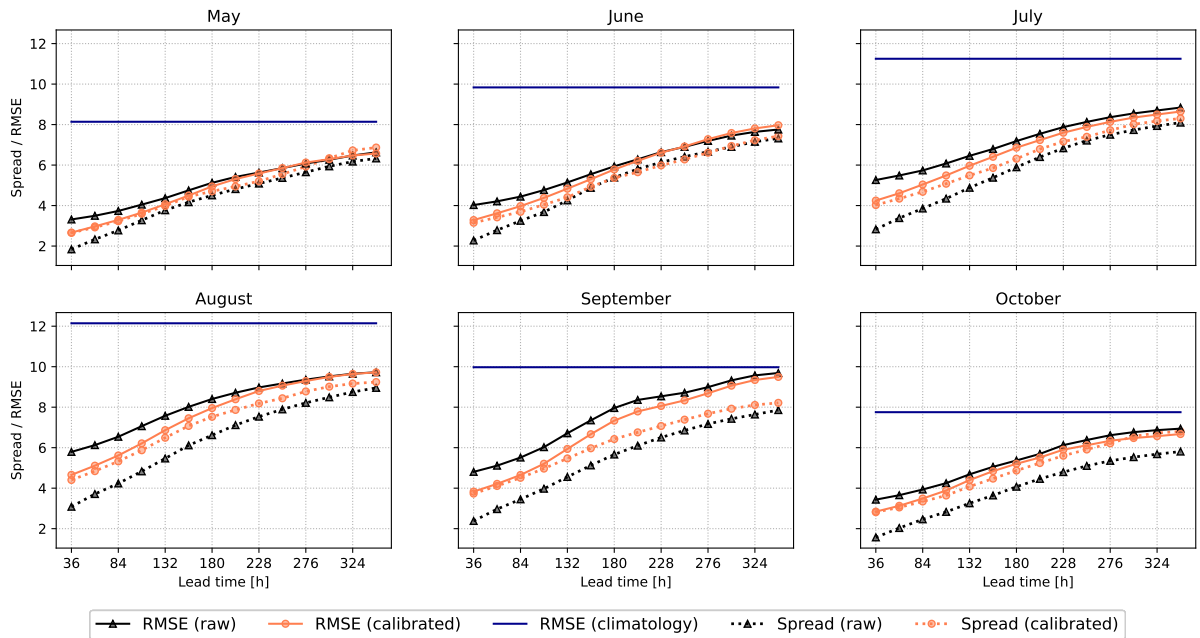


Figure S4. Spread and RMSE for raw and calibrated FWI forecasts and RMSE of the climatology averaged over NEU region for each month of the fire season.

WCE**Figure S5.** Same as S4 for WCE region.**EUMED****Figure S6.** Same as Fig. S4 for EUMED region.

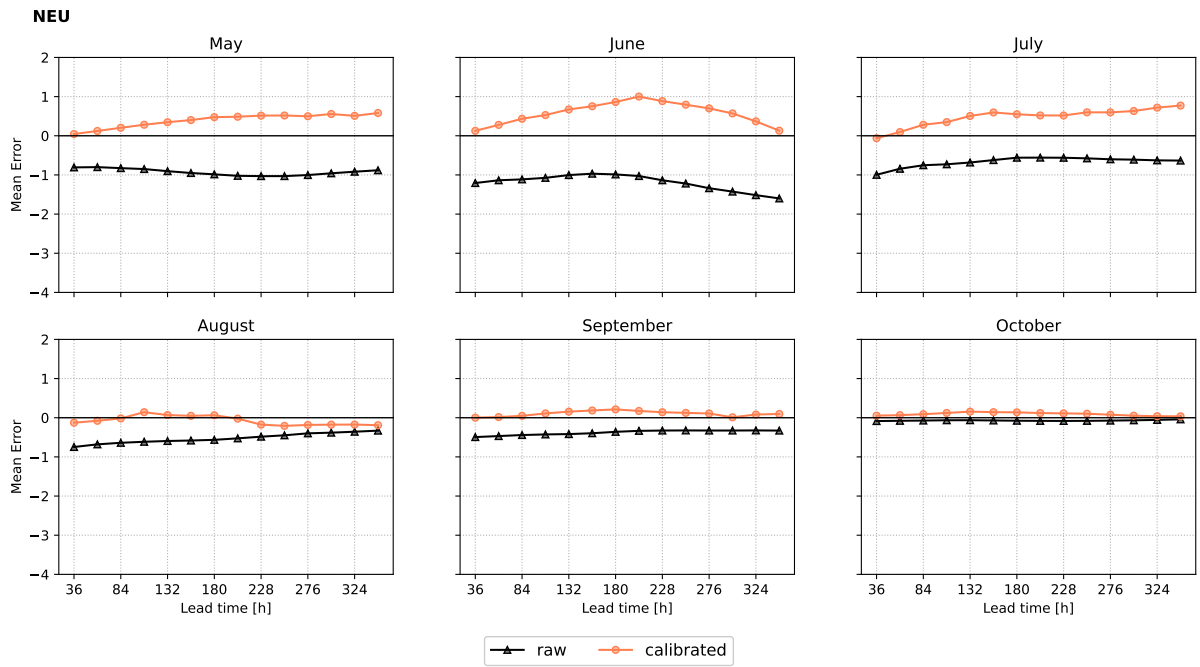


Figure S7. Mean error averaged over the NEU region for each month.

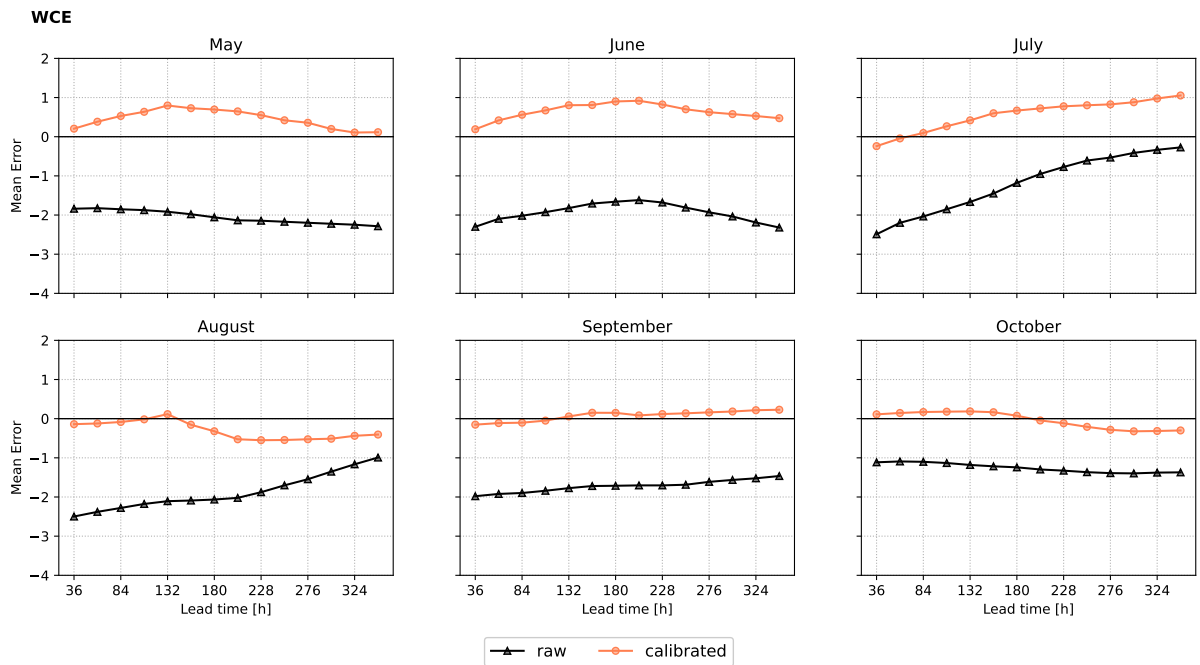


Figure S8. Same as Fig. S7 for WCE region.

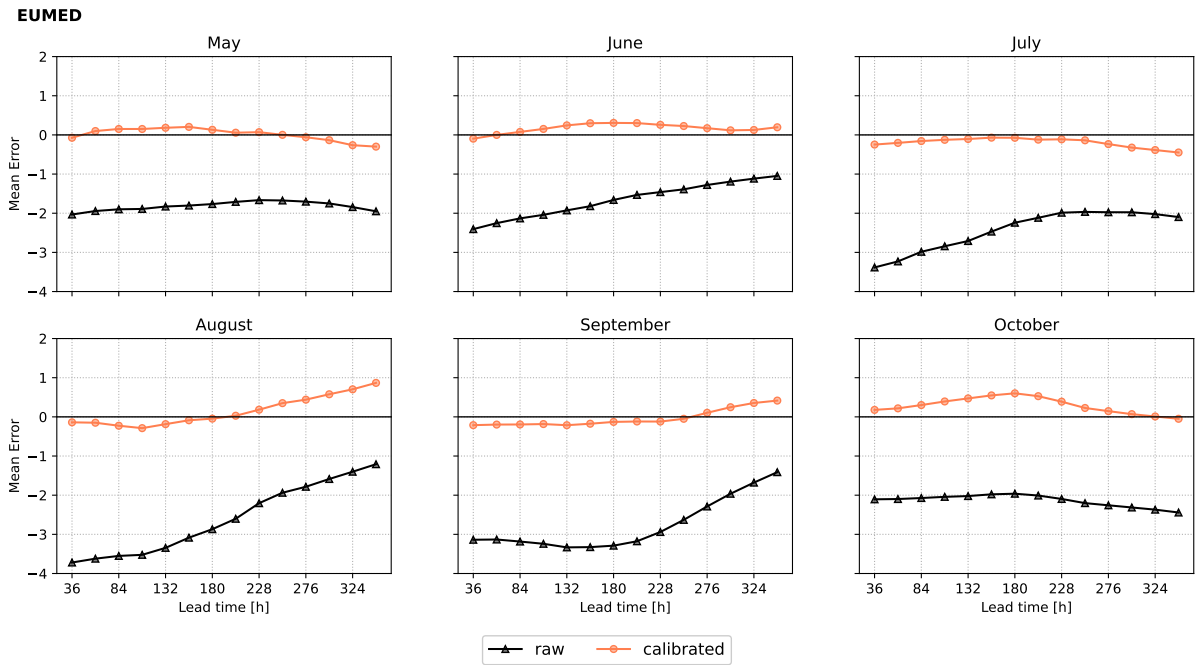


Figure S9. Same as Fig. S7 for EUMED region.

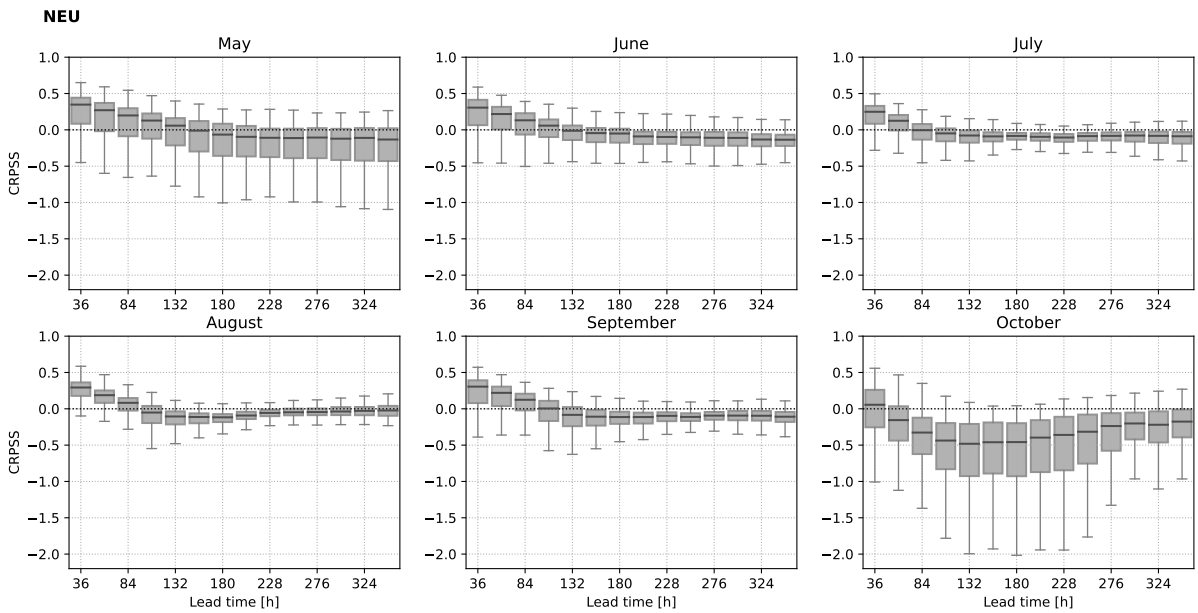


Figure S10. Continuous ranked probability skill score with the raw forecast as reference averaged over the NEU region for each month.

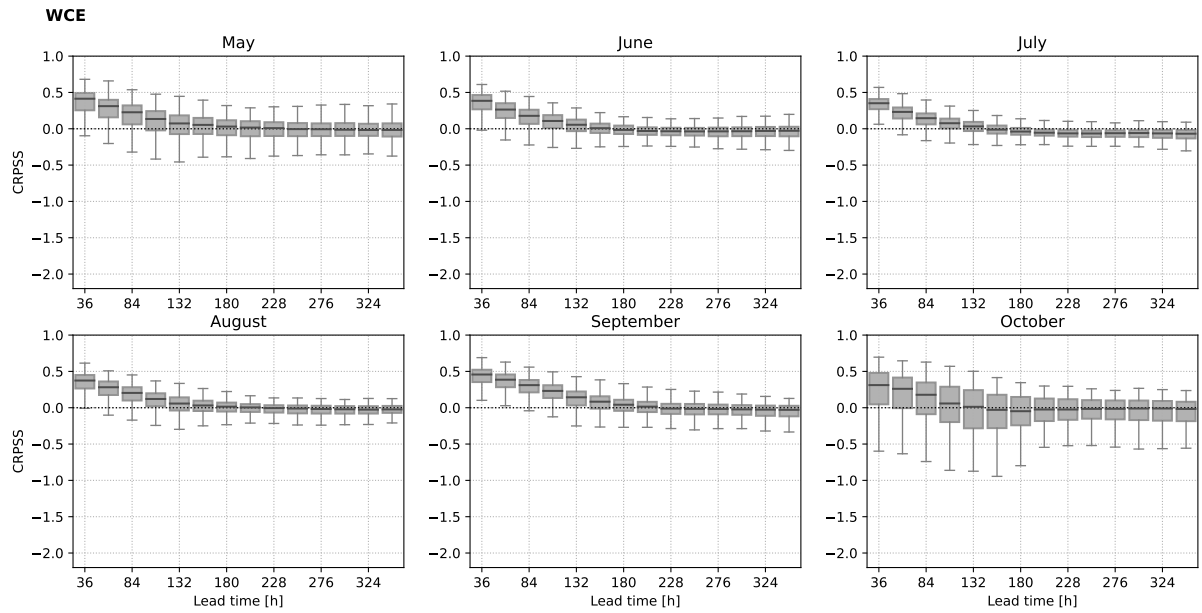


Figure S11. Same as Fig. S10 for WCE region.

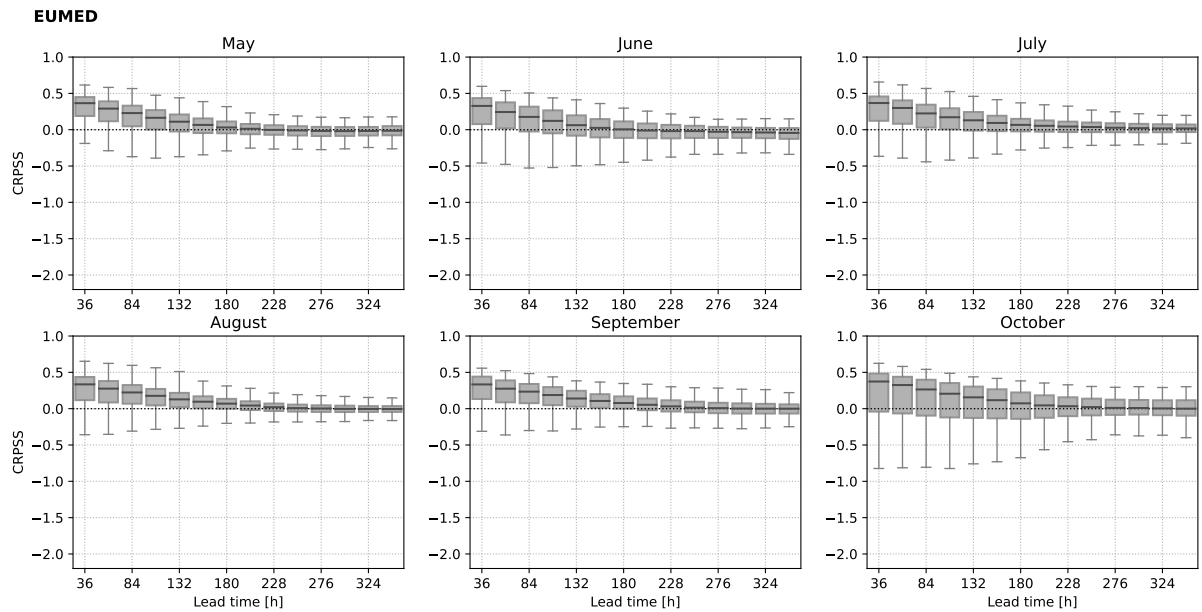


Figure S12. Same as Fig. S10 for EUMED region.