



Corrigendum to
“Towards a global impact-based forecasting
model for tropical cyclones” published in Nat. Hazards Earth Syst.
Sci., 24, 309–329, 2024

Mersedeh Kooshki Forooshani¹, Marc van den Homberg², Kyriaki Kalimeri¹, Andreas Kaltenbrunner^{1,4},
Yelena Mejova¹, Leonardo Milano³, Pauline Ndirangu³, Daniela Paolotti¹, Aklilu Teklesadik², and Monica L. Turner³

¹ISI Foundation, Turin, Italy

²510, an Initiative of the Netherlands Red Cross, the Hague, the Netherlands

³UN OCHA Centre for Humanitarian Data, the Hague, the Netherlands

⁴Internet Interdisciplinary Institute, Universitat Oberta de Catalunya, Barcelona, Spain

Correspondence: Marc van den Homberg (mvandenhomberg@redcross.nl) and Andreas Kaltenbrunner (kaltenbrunner@gmail.com)

Published: 12 February 2024

The published version of Fig. 5 is not the correct figure. It is identical to Fig. 6. This mistake was inserted during the file validation process when the author sent the new identical figures. Below you will find the correct Fig. 5.

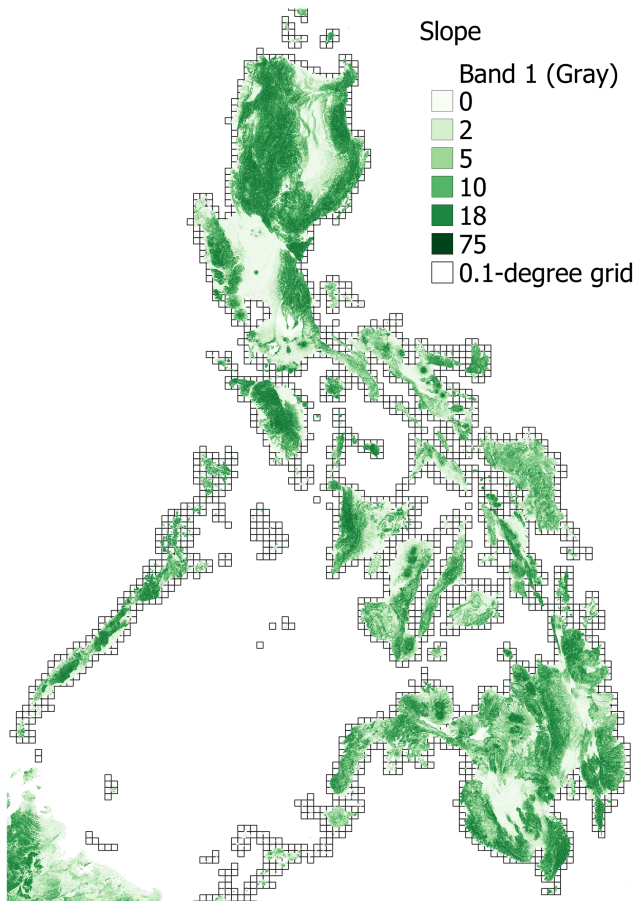


Figure 5. Slope as computed from the SRTM database. The slope is still shown at a 90 m spatial resolution, with the shades of green indicating the steepness of the slope. Light green shows a flatter slope, while dark green shows a steep slope.