



Supplement of

Multisectoral analysis of drought impacts and management responses to the 2008–2015 record drought in the Colorado Basin, Texas

Stephen B. Ferencz et al.

Correspondence to: Stephen B. Ferencz (stephen.ferencz@pnnl.gov)

The copyright of individual parts of the supplement might differ from the article licence.

Figure S1:

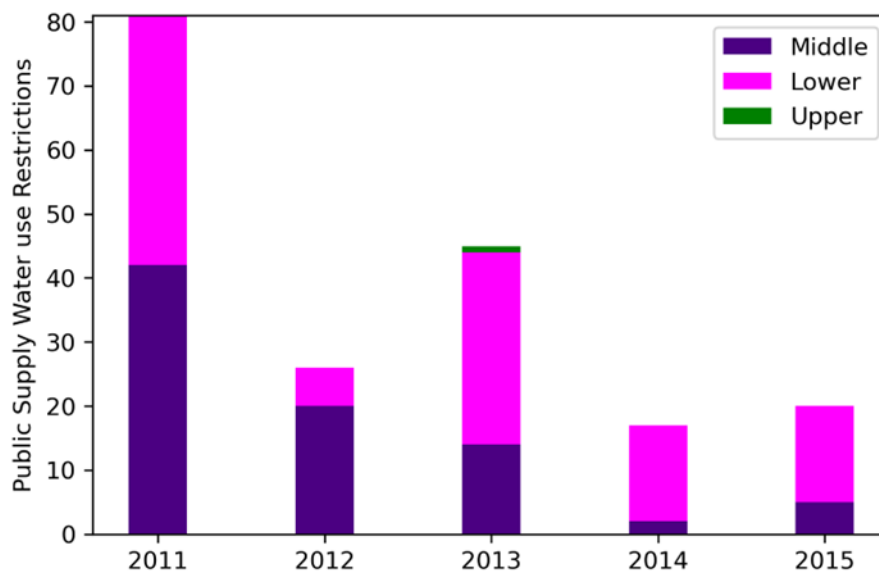


Figure S1: Number of public water supply water use restrictions enforced from 2011 to 2015 within each of the basin regions. Data prior to 2011 was unavailable. Only counties shown in Figure 1f presented.

5

10

Figure S2:

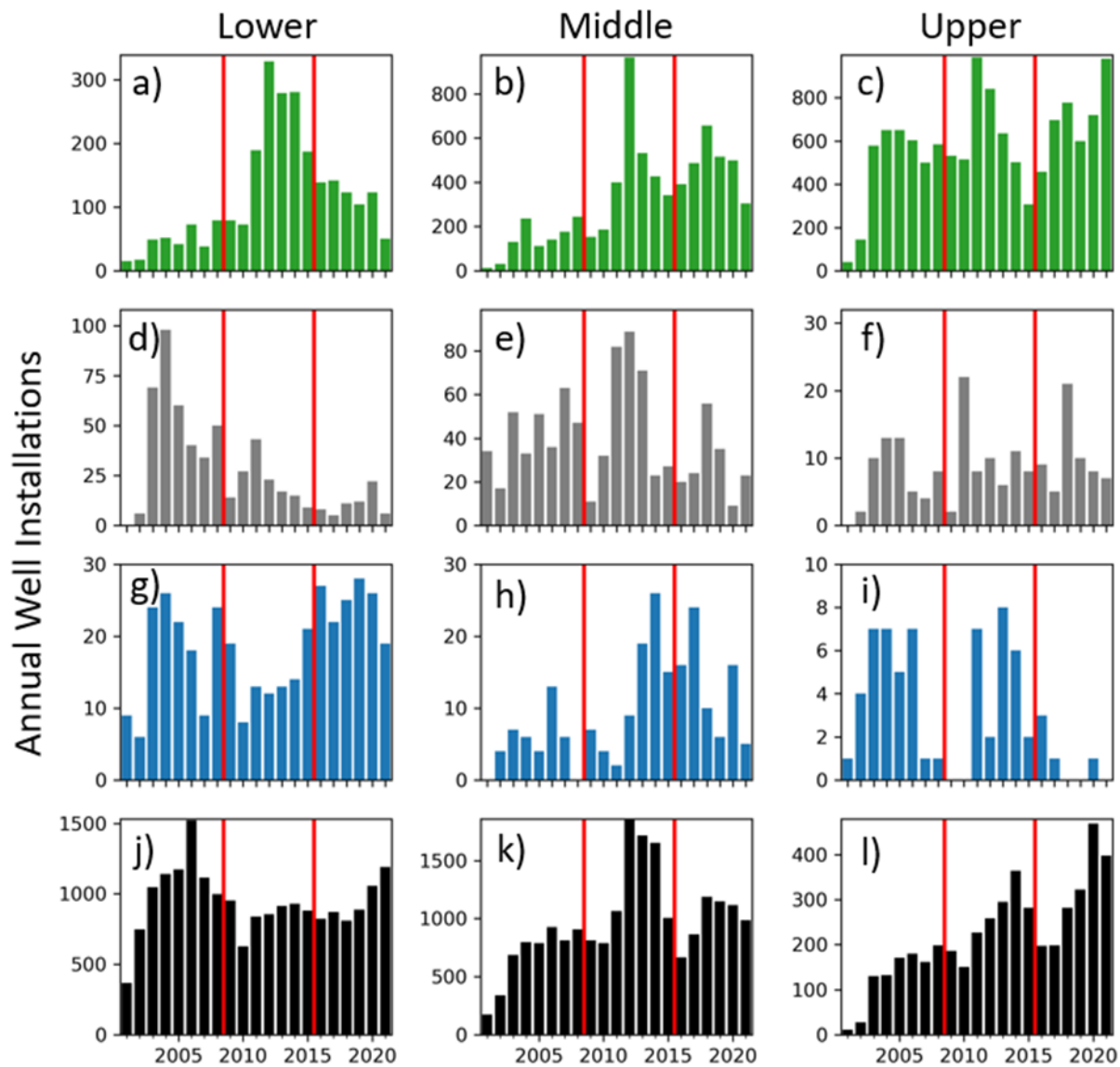
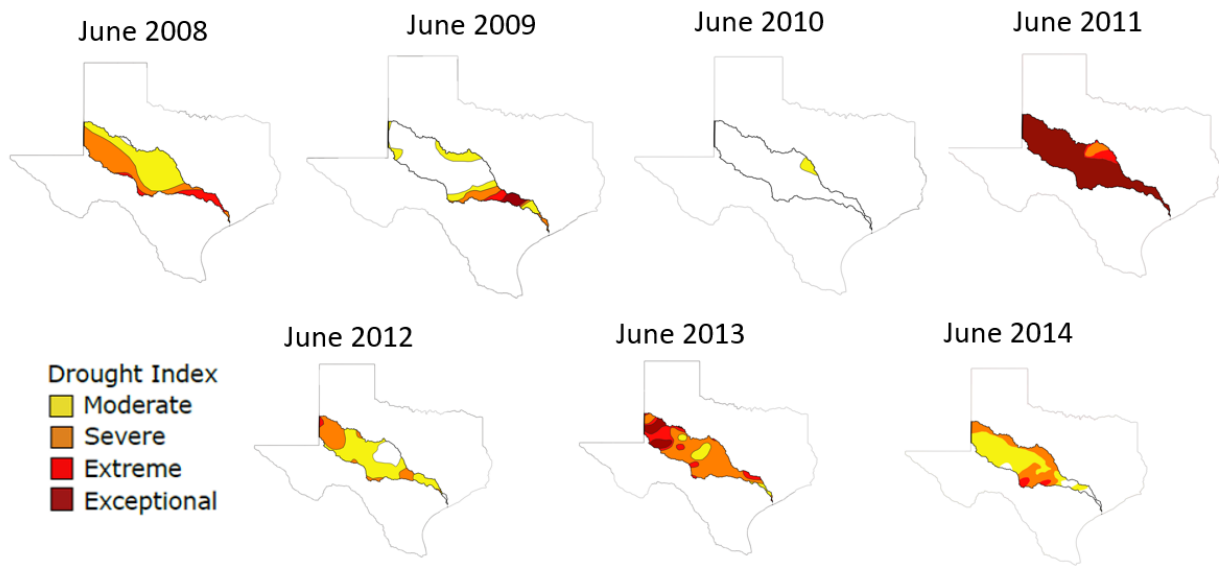


Figure S2: Annual well installations in the three water planning regions for irrigation (a-c), industry (d-f), public supply (g-i), and domestic (j-l). Data from the Texas Water Development Board (TWDB). Only counties shown in Figure 1f presented.

Figure S3:



20

Figure S3: Snapshots of US Drought Monitor drought index in June for 2008 to 2014 show the spatial heterogeneity of drought conditions within the basin.

25

30

35

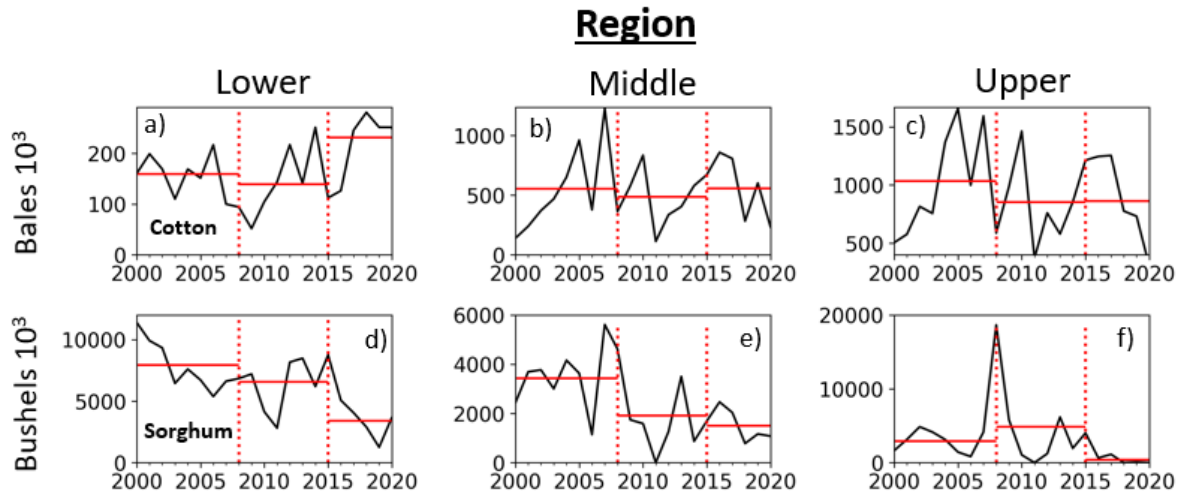


Figure S4: Sorghum and cotton production in the three regions.

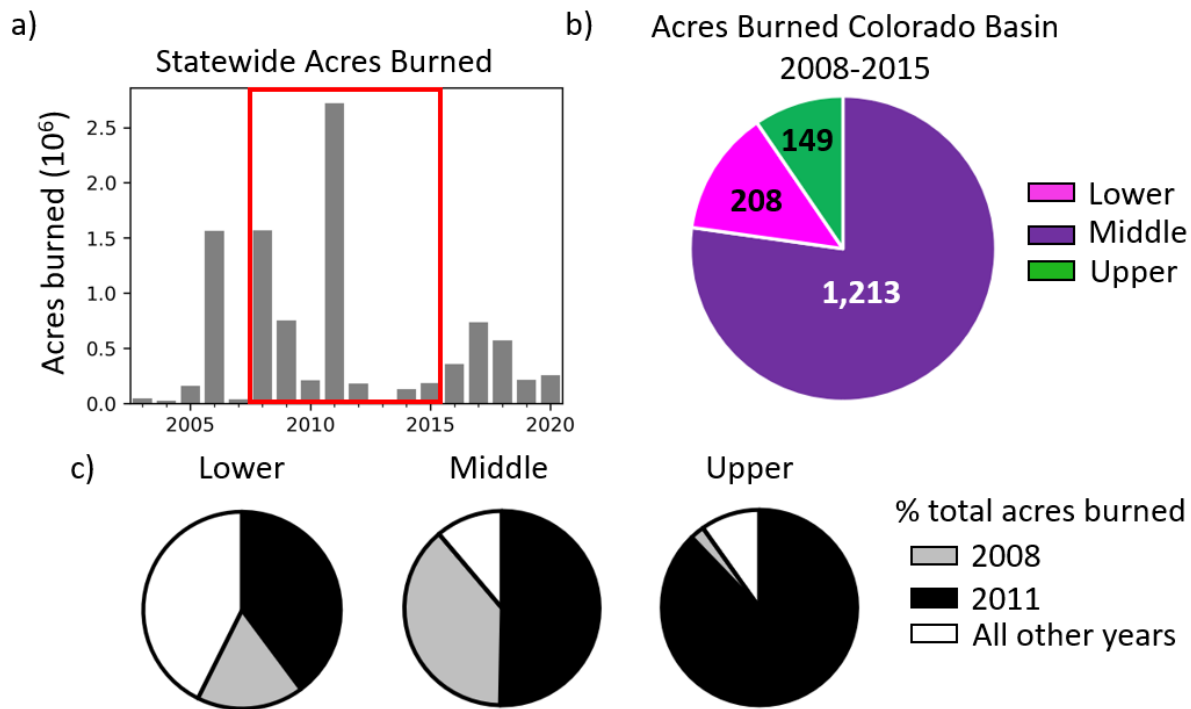
45

50

55

60

Figure S5:



65 **Figure S5:** Estimated annual acres burned in Texas from 2003 – 2020 (a). Acres burned during the drought in the Colorado Basin (b), and fraction of acres burned during 2008, 2011, and the rest of the drought (c). Data from NOAA, 2022.

70

75

80

Figure S6:

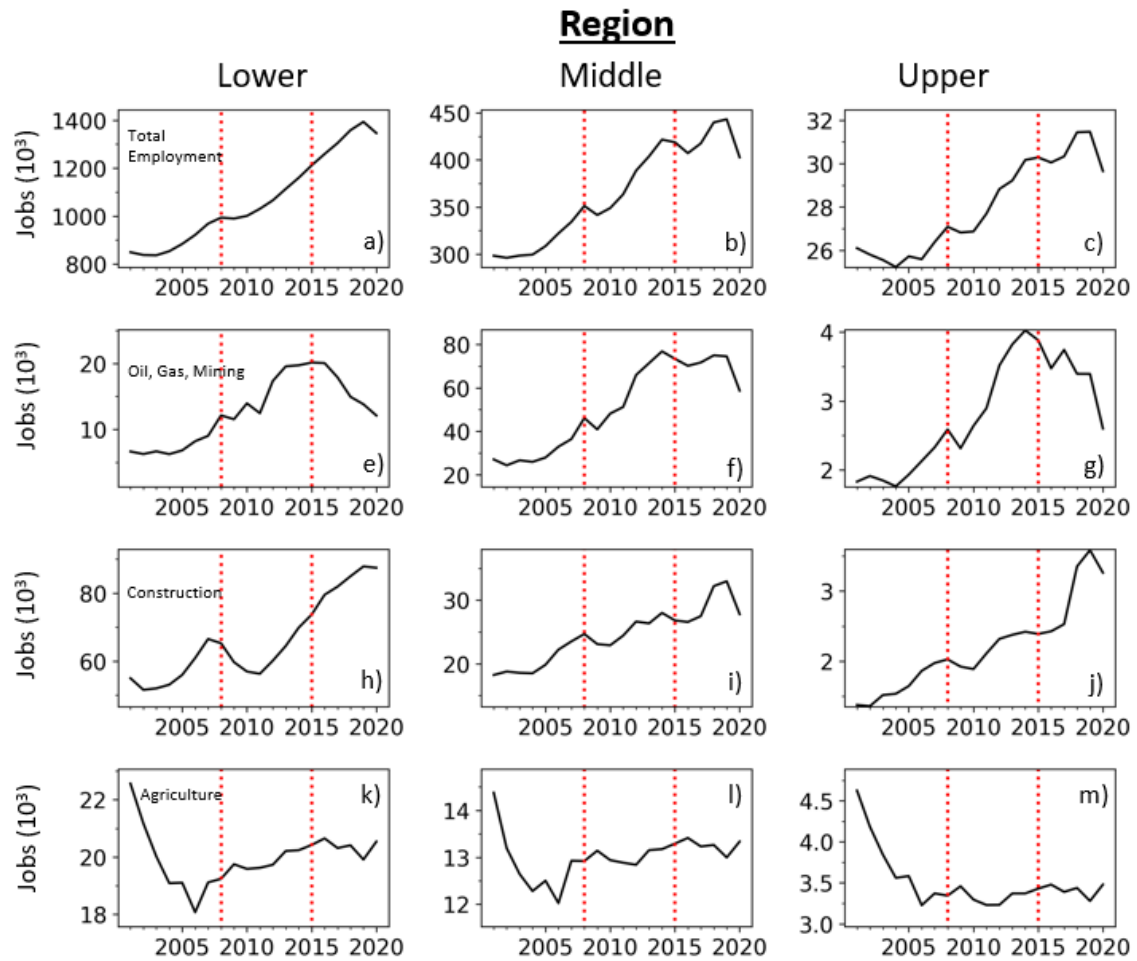
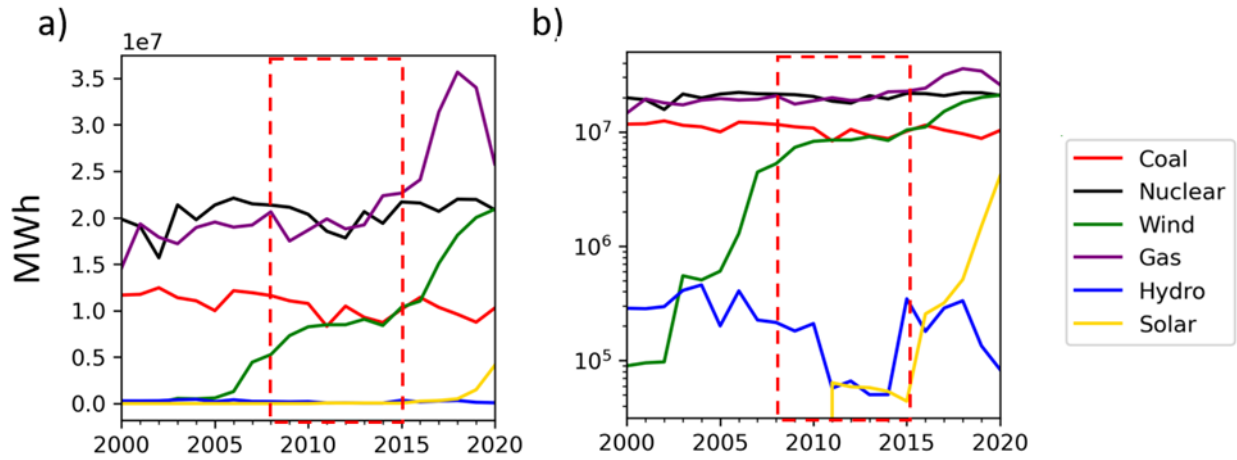


Figure S6: Annual regional employment data for total employment (a-c), oil, gas, and mining (e-f), construction (h-j), and agriculture (k-m).

85

90

Figure S7:



95 **Figure S7:** Electricity generation by fuel type for power plants in the Colorado Basin, TX. Annual generation in linear (a) and log₁₀ (b). Data from Energy Information Administration (EIA, 2022).