



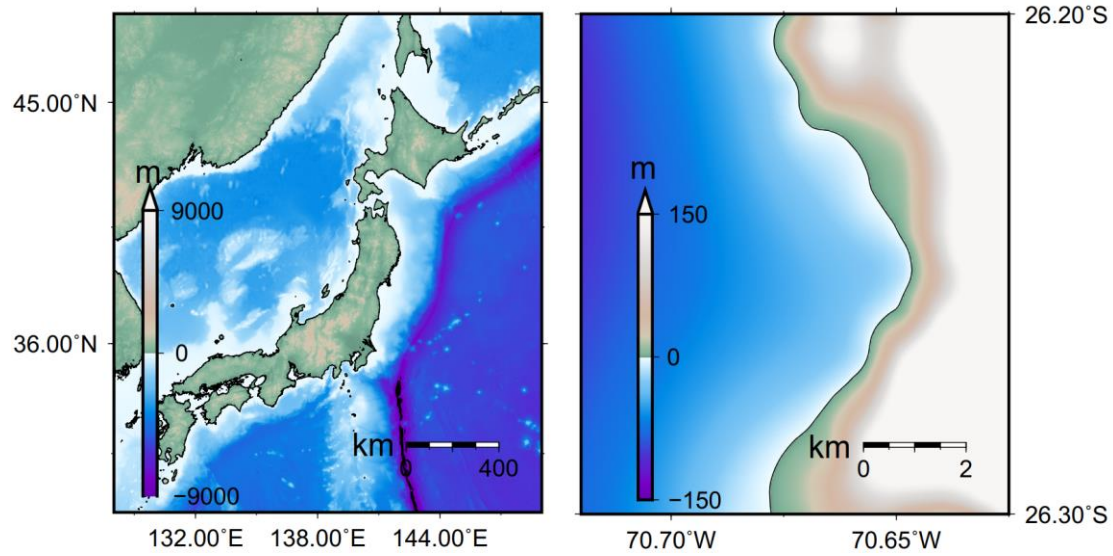
*Supplement of*

## **The characteristics of the 2022 Tonga volcanic tsunami in the Pacific Ocean**

**Gui Hu et al.**

*Correspondence to:* Linlin Li (lilinlin3@mail.sysu.edu.cn)

The copyright of individual parts of the supplement might differ from the article licence.



1

2 **Figure S1. Bathymetry in Japan (a) and Chañaral bay (b) in Chile. Bathymetry data is downloaded**  
3 **from GEBCO ([https://www.gebco.net/data\\_and\\_products/gridded\\_bathymetry\\_data/](https://www.gebco.net/data_and_products/gridded_bathymetry_data/), accessed on**  
4 **01 April, 2019).**