



Supplement of

Characteristics and causes of natural and human-induced landslides in a tropical mountainous region: the rift flank west of Lake Kivu (Democratic Republic of the Congo)

Jean-Claude Maki Mateso et al.

Correspondence to: Jean-Claude Maki Mateso (makigeo2013@gmail.com, jean-claude.maki@uclouvain.be)

The copyright of individual parts of the supplement might differ from the article licence.

Supplemental material

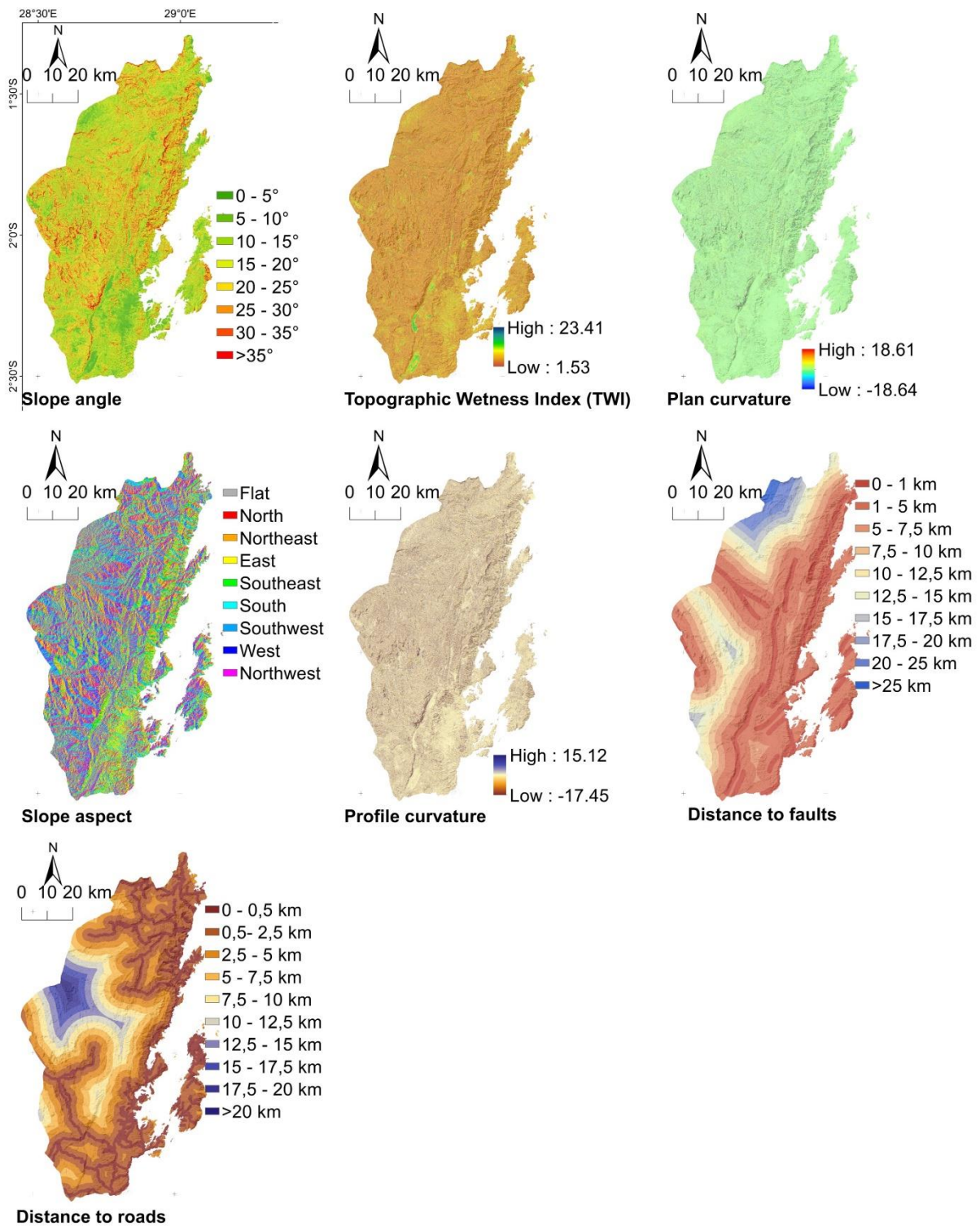


Figure S1: Additional predisposing factors used for the susceptibility assessment not shown in the manuscript.