



*Supplement of*

## **Debris flow velocity and volume estimations based on seismic data**

**Andreas Schimmel et al.**

*Correspondence to:* Velio Coviello ([velio.coviello@cnr.it](mailto:velio.coviello@cnr.it))

The copyright of individual parts of the supplement might differ from the article licence.

This supplement gives an overview of the seismic signals recorded of debris flows which occurred at the catchments Lattenbach, Gatria and Cancia from 2014 to 2018.

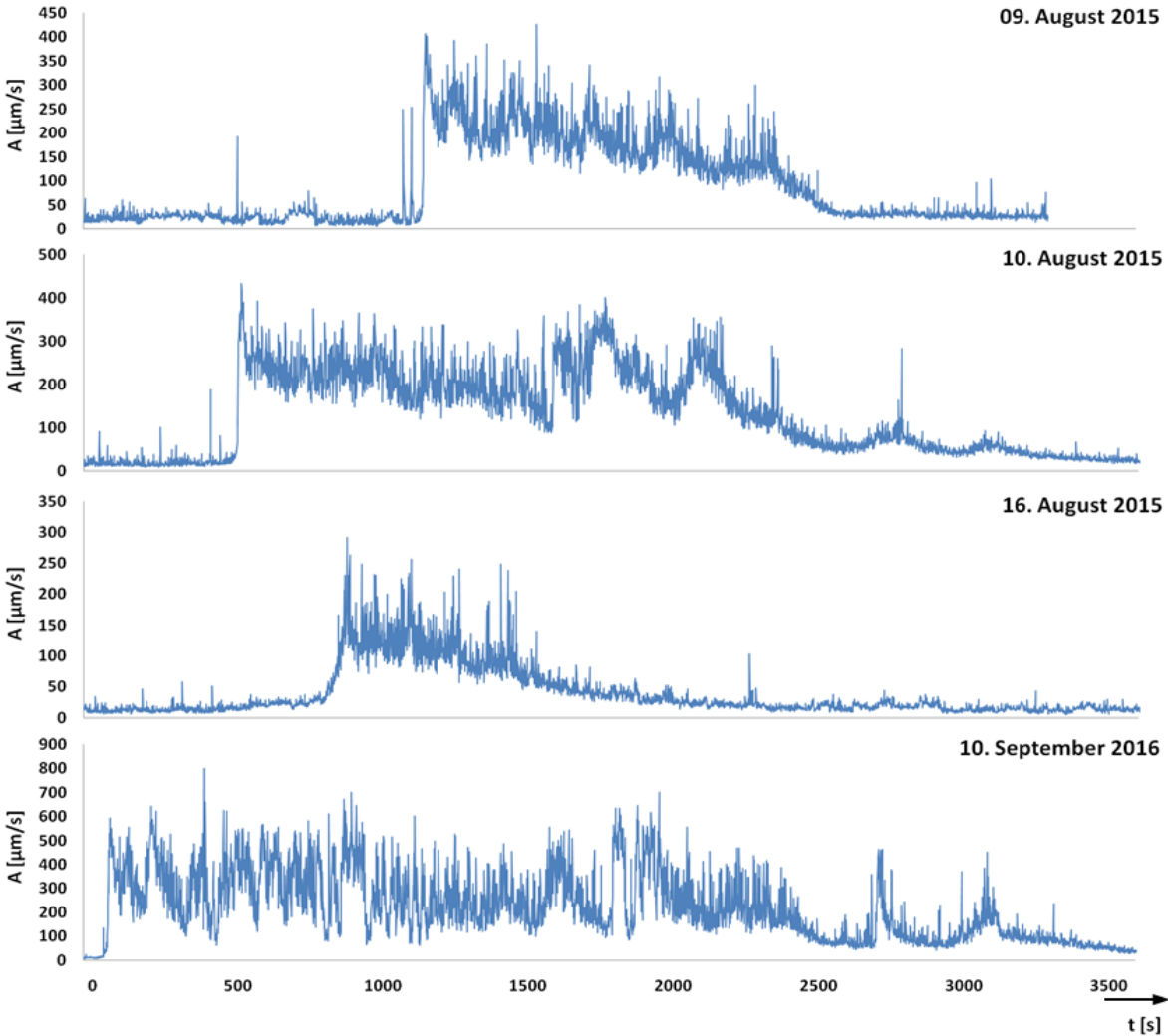


Figure S1: Seismic amplitudes of debris flows at Lattenbach (2015 - 2016)

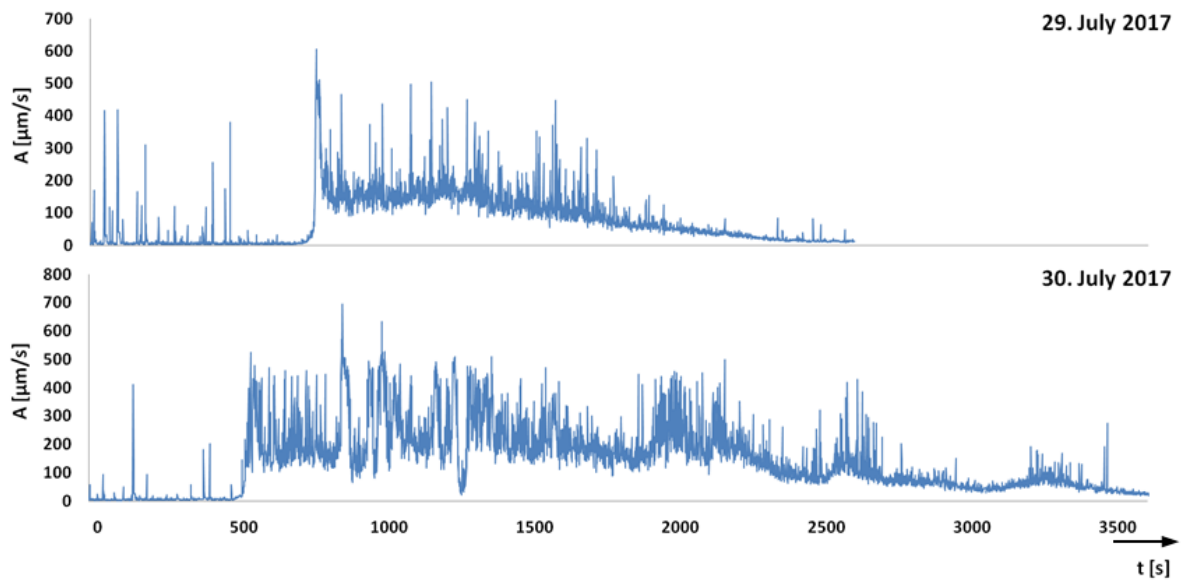


Figure S2: Seismic amplitudes of debris flows at Lattenbach (2017)

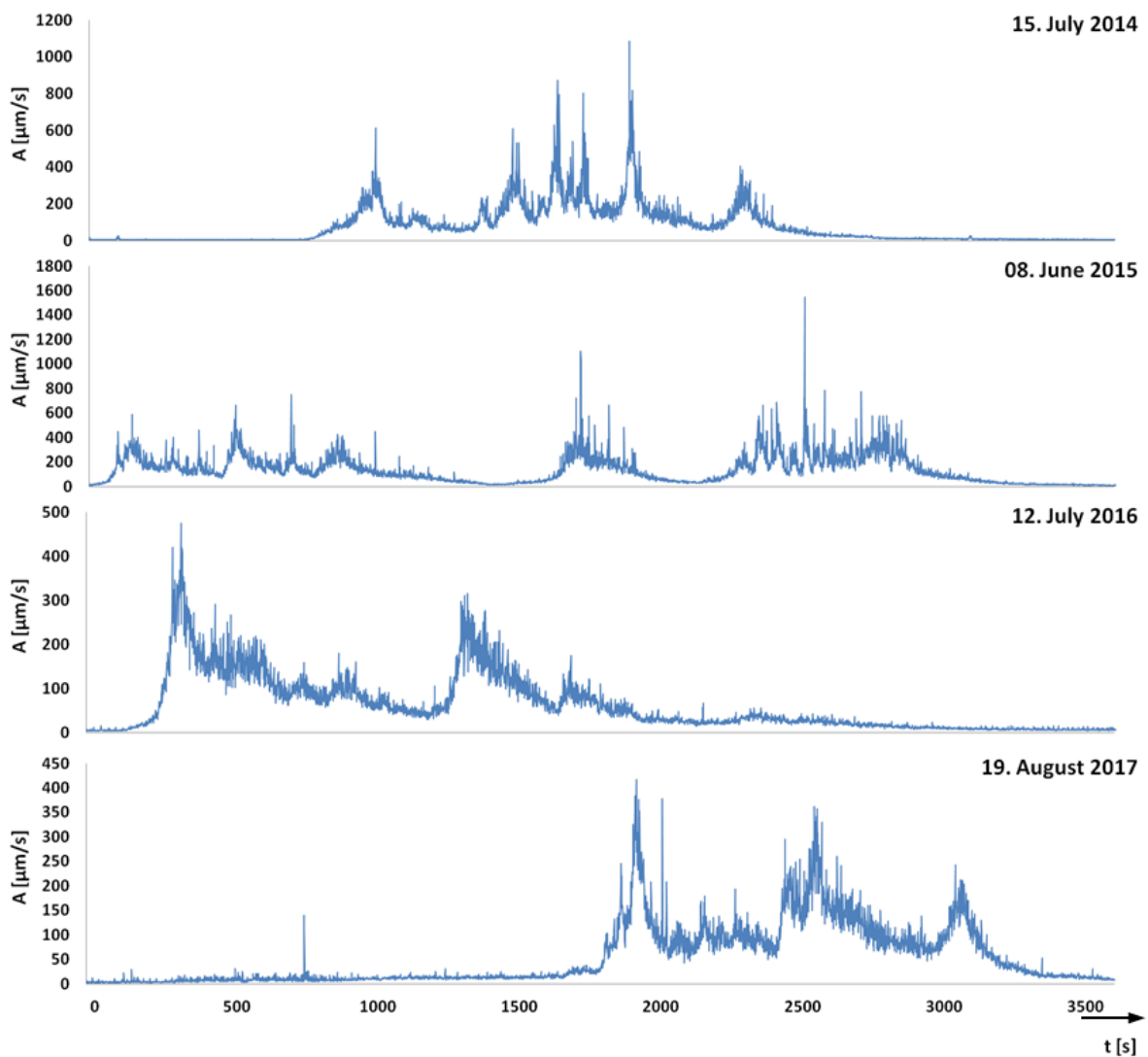


Figure S3: Seismic amplitudes of debris flows at Gatria (2014 - 2017)

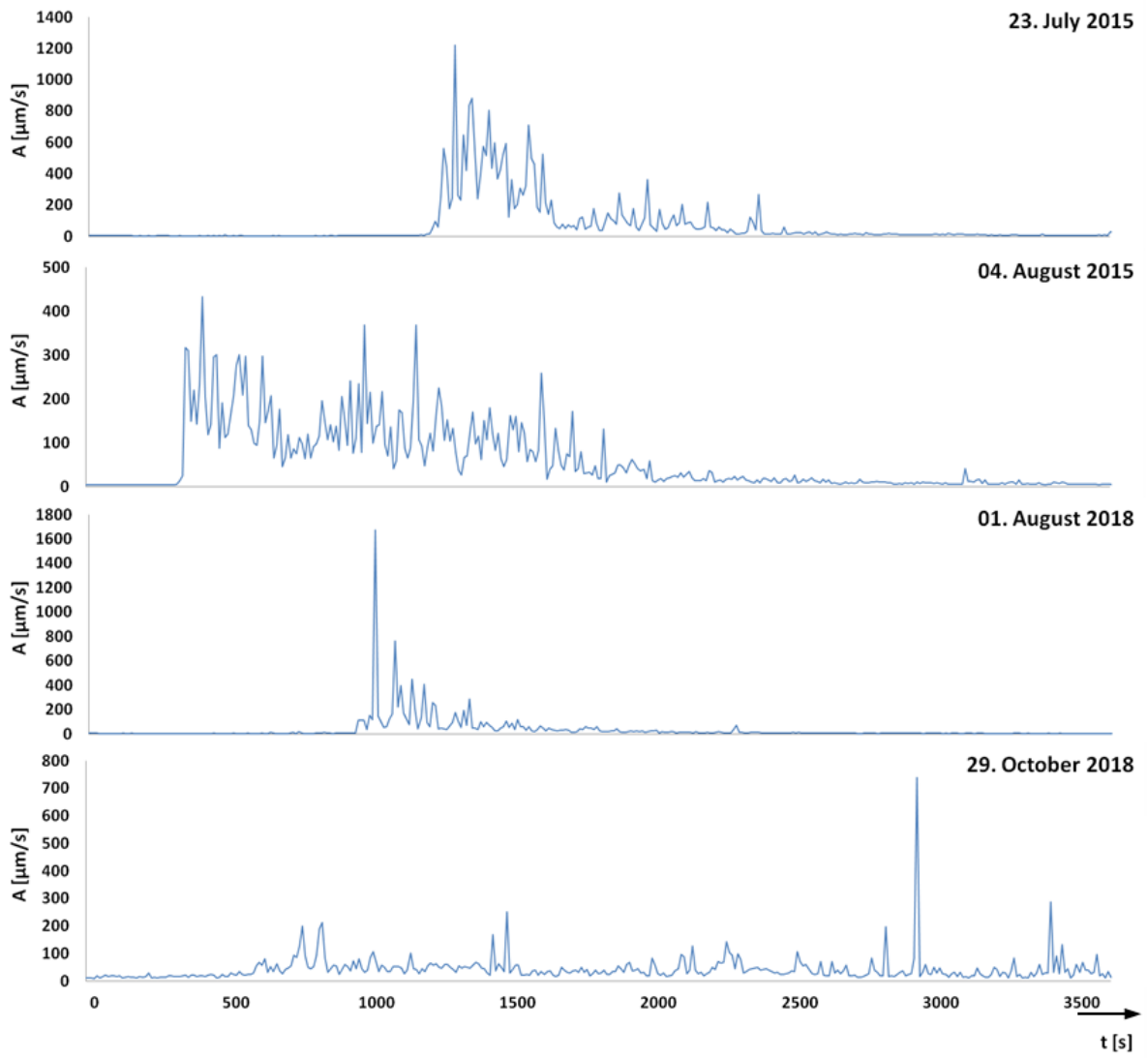


Figure S4: Seismic amplitudes of debris flows at Cancia (2015 - 2018)