



Supplement of

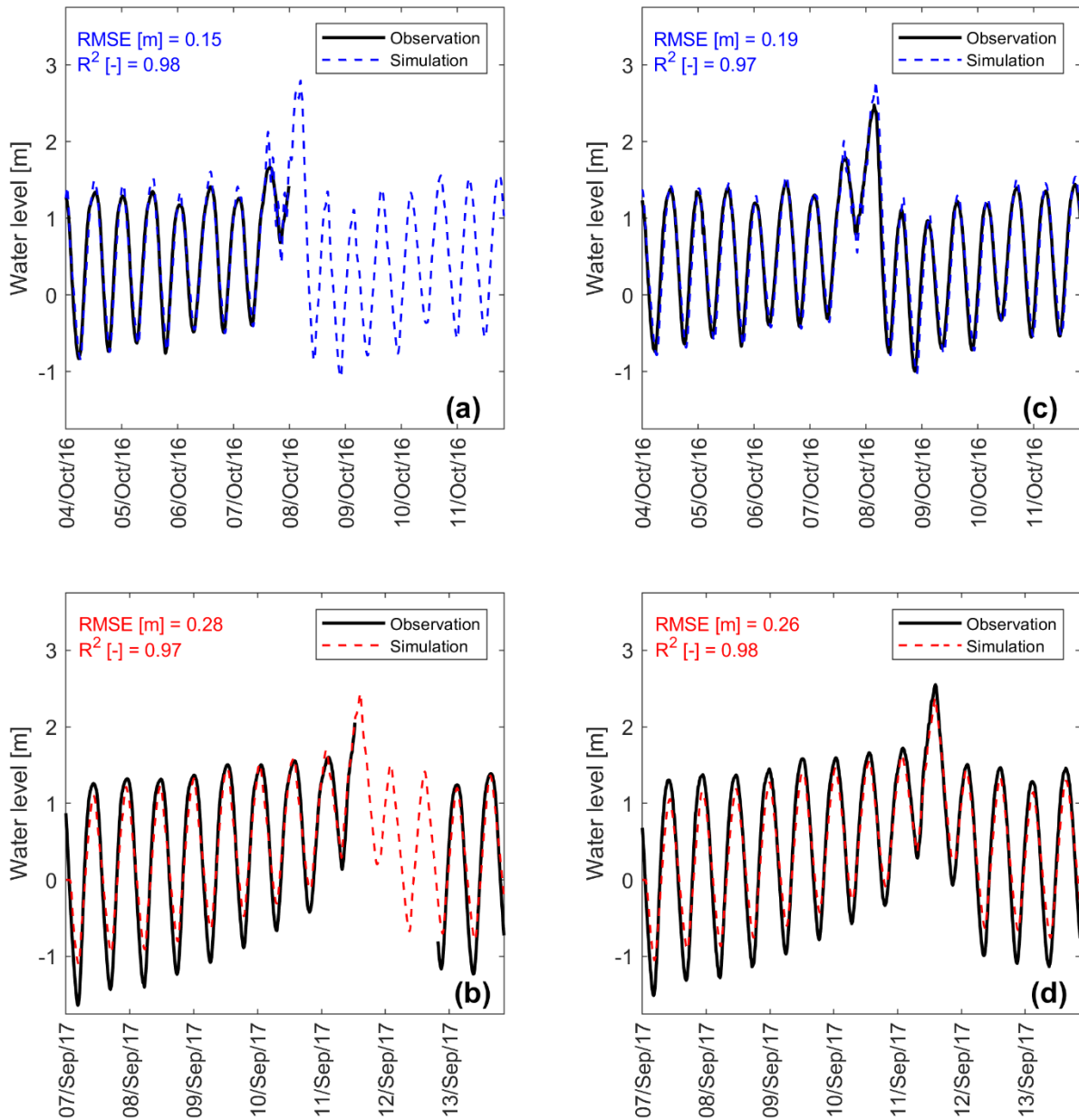
Real-time coastal flood hazard assessment using DEM-based hydrogeomorphic classifiers

Keighobad Jafarzadegan et al.

Correspondence to: Keighobad Jafarzadegan (kjafarzadegan@ua.edu)

The copyright of individual parts of the supplement might differ from the article licence.

1 Supplementary Material



2

3 **Figure S1.** Calibration and validation of the Savannah Delft3D-FM model. Time series of
4 simulated and observed WLS at (a, b) Port Wentworth and (c, d) Savannah River at USACE dock.

5 Top and bottom panel show times series of Hurricane Matthew and Irma, respectively. Note that
6 the model can simulate water level variability, and so fill the data gaps observed during Hurricane
7 Matthew.