



Supplement of

**Characteristics of two tsunamis generated by successive M_w 7.4
and M_w 8.1 earthquakes in the Kermadec Islands on 4 March 2021**

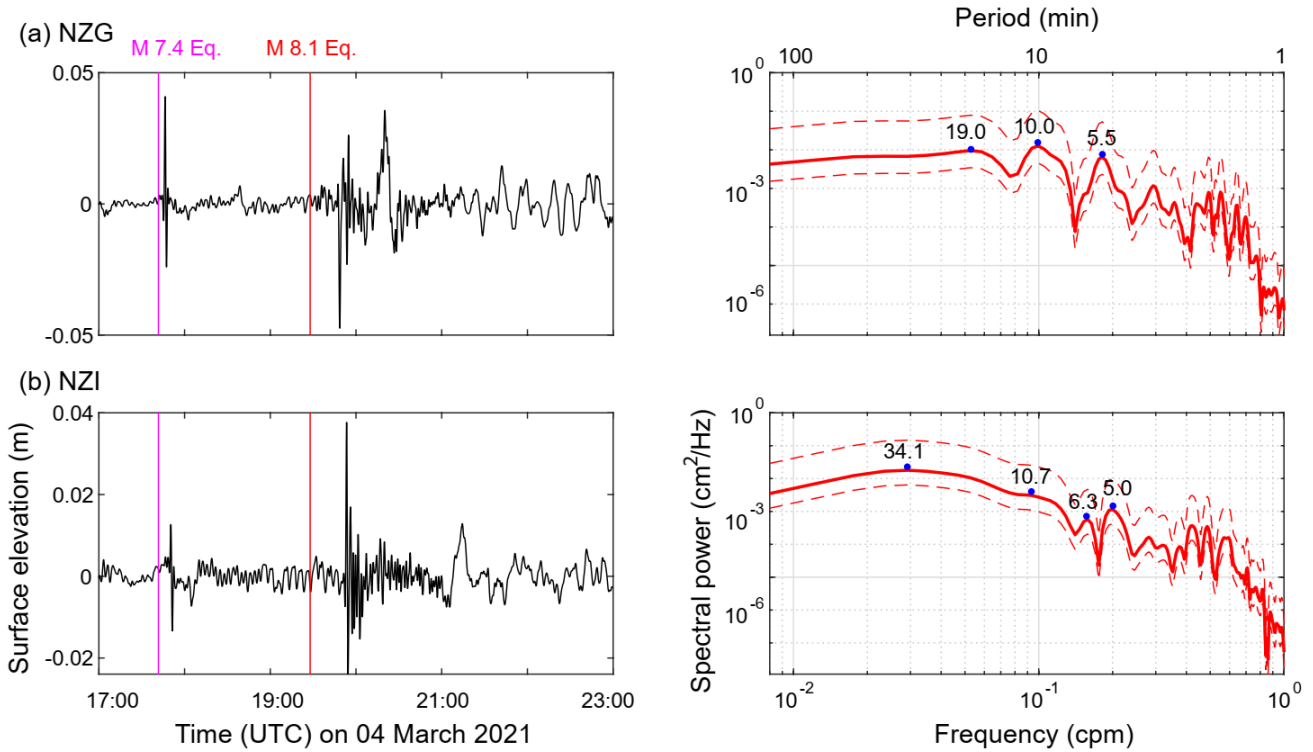
Yuchen Wang et al.

Correspondence to: Yuchen Wang (ywang@jamstec.go.jp)

The copyright of individual parts of the supplement might differ from the article licence.

5 **Supporting Information**

10



15

Figure S1: Sea level change and Fourier spectra at Deep-ocean Assessment and Reporting of Tsunamis (DARTs) tsunameters NZG (a) and NZI (b). In the left column, the pink and red vertical lines show the origin times of the Mw 7.4 and Mw 8.1 earthquakes, respectively. In the right column, red curves represent the spectra of the second tsunami. Blue dots show the spectral peaks. The 95% confidence bounds of the tsunami spectra are indicated by dashed curves.