



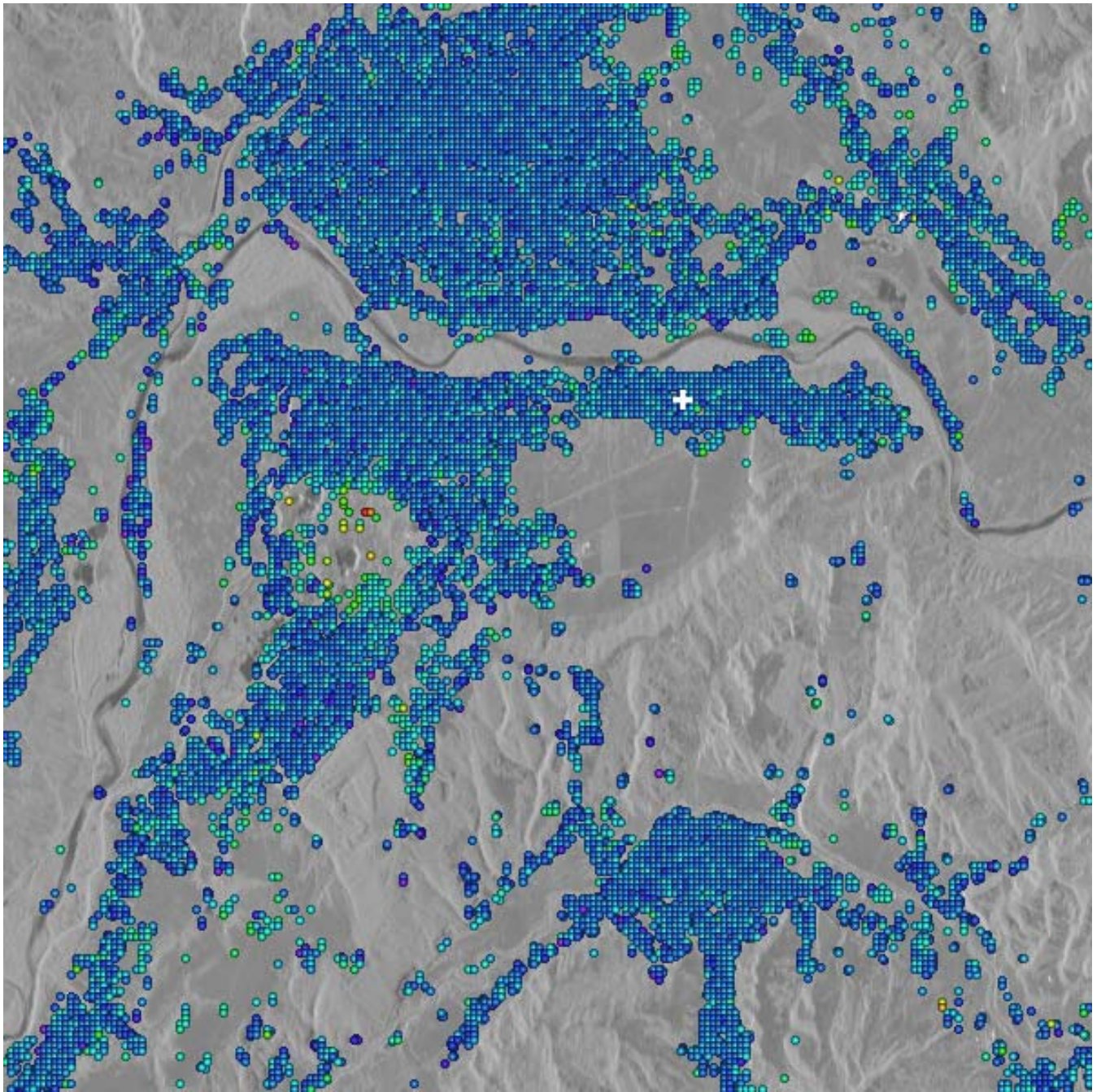
*Supplement of*

**Evolution of surface deformation related to salt-extraction-caused sinkholes in Solotvyno (Ukraine) revealed by Sentinel-1 radar interferometry**

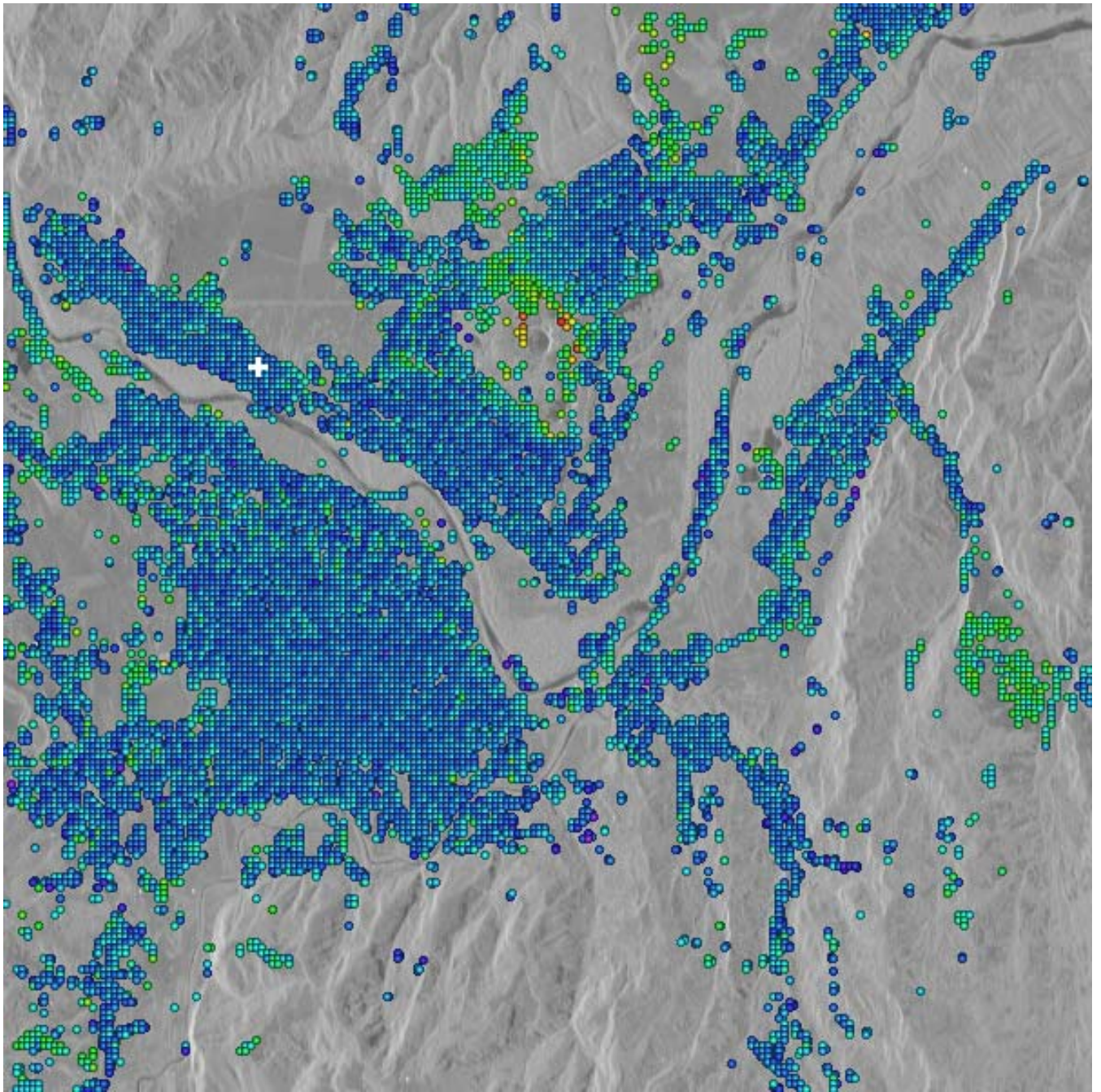
**Eszter Szűcs et al.**

*Correspondence to:* Eszter Szűcs (Szucs.Eszter@csfk.mta.hu)

The copyright of individual parts of the supplement might differ from the article licence.



S1. LoS linear deformation rate from ascending Sentinel-1 scenes (track 29) in radar geometry, white cross shows non-deforming reference area. Same colorscale as Fig. 6. Contains modified Copernicus Sentinel data [2014-2019]



S2. LoS linear deformation rate in radar geometry determined from Sentinel-1 data of track 80 (descending pass), white cross shows non-deforming reference area. Same colorscale as Fig. 7. Contains modified Copernicus Sentinel data [2014-2019]