



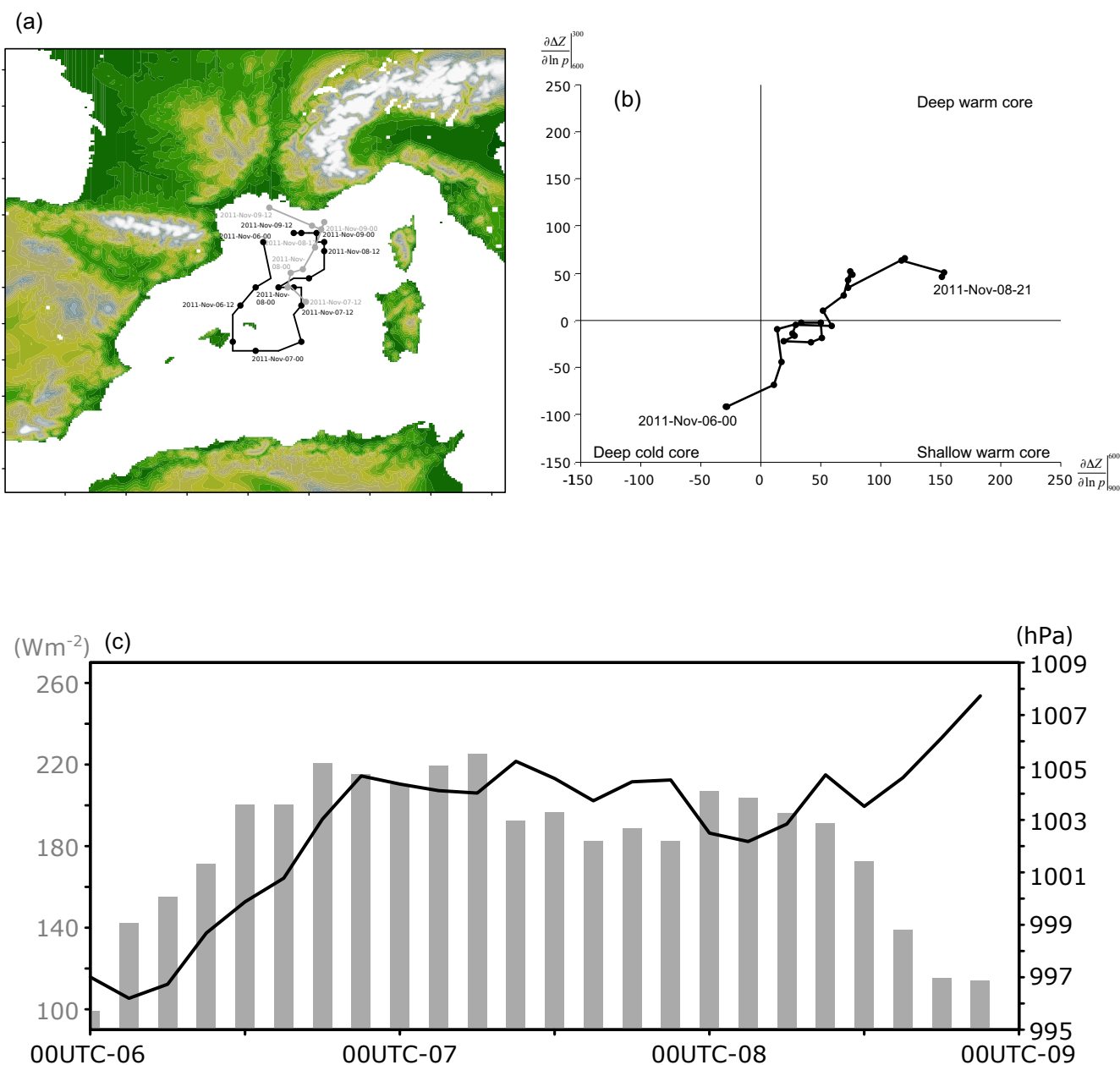
*Supplement of*

## **Modelling a tropical-like cyclone in the Mediterranean Sea under present and warmer climate**

**Shunya Koseki et al.**

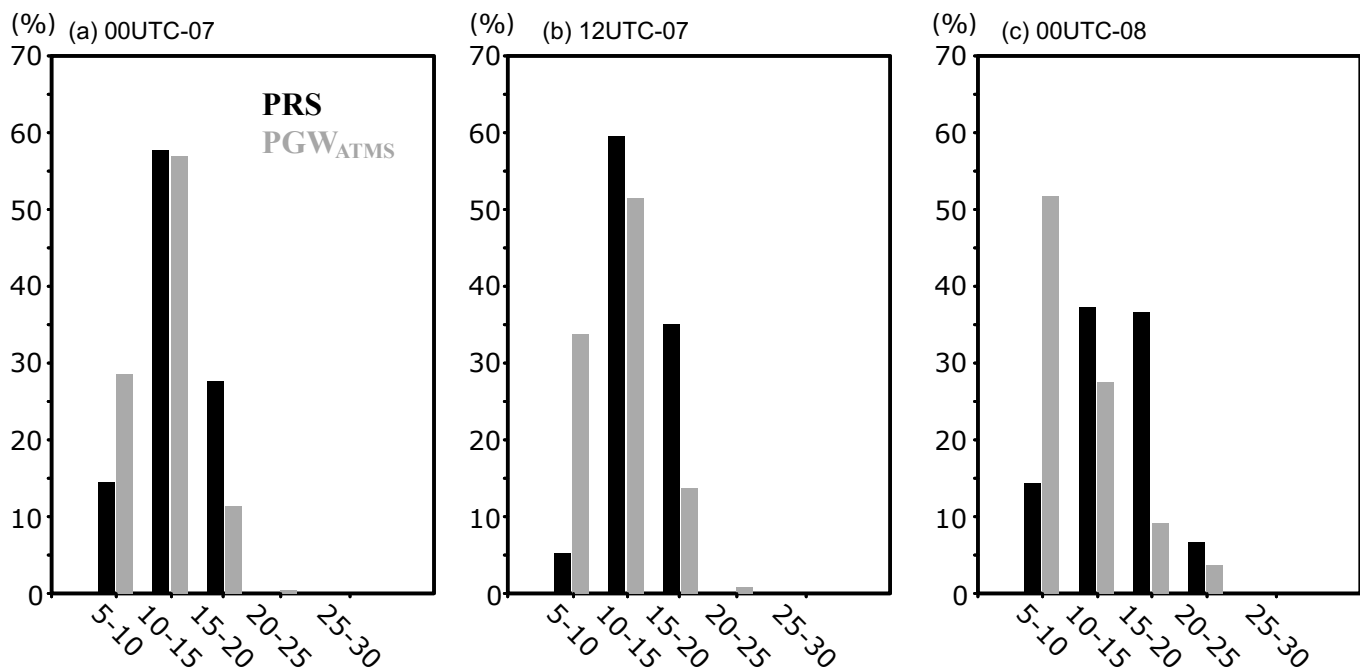
*Correspondence to:* Shunya Koseki ([shunya.koseki@gfi.uib.no](mailto:shunya.koseki@gfi.uib.no))

The copyright of individual parts of the supplement might differ from the CC BY 4.0 License.



**Figure S1.**

(a) Cyclone track (black is from ERA5 and gray is from NOAA observed cyclone track), (b) cyclone phase space and (c) sea level pressure in the centre of medicane and latent heat flux averaged within 2.5degree radius of the medicane. (b) and (c) are estimated from ERA5.



**Figure S2.**

Probability density function of wind speed within 250k radius around simulated medicane center for 5-10 m/s, 10-15 m/s, 15-20 m/s, 20-25 m/s, and 25-30 m/s at (a) 00UTC-07, (b) 12UTC-07, and (c) 00UTC-08 for PRS and PGW<sub>ATMS</sub>