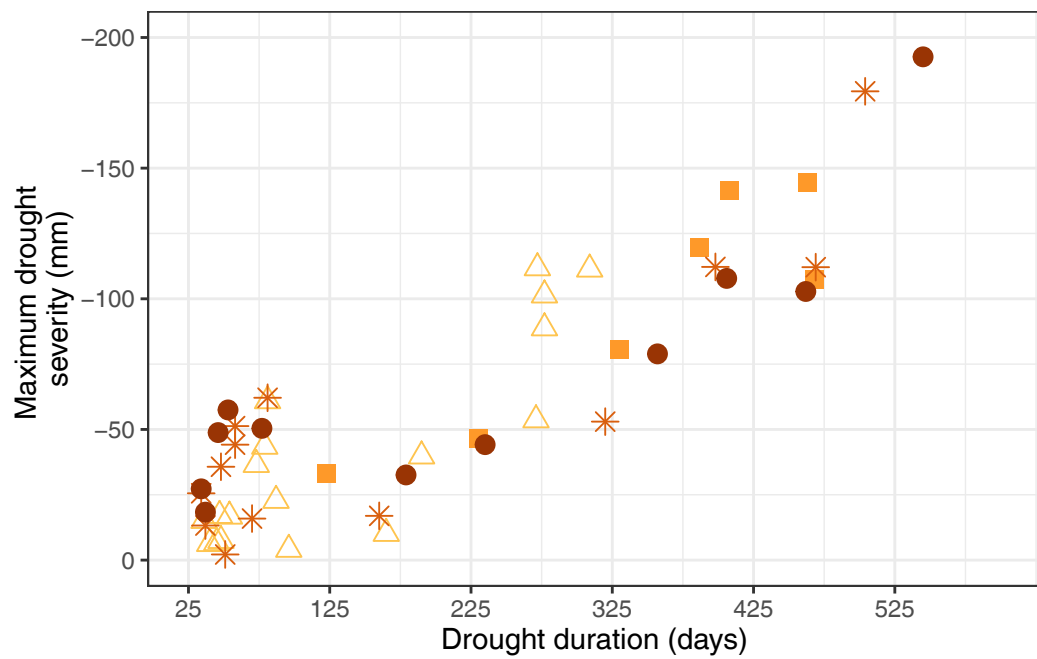
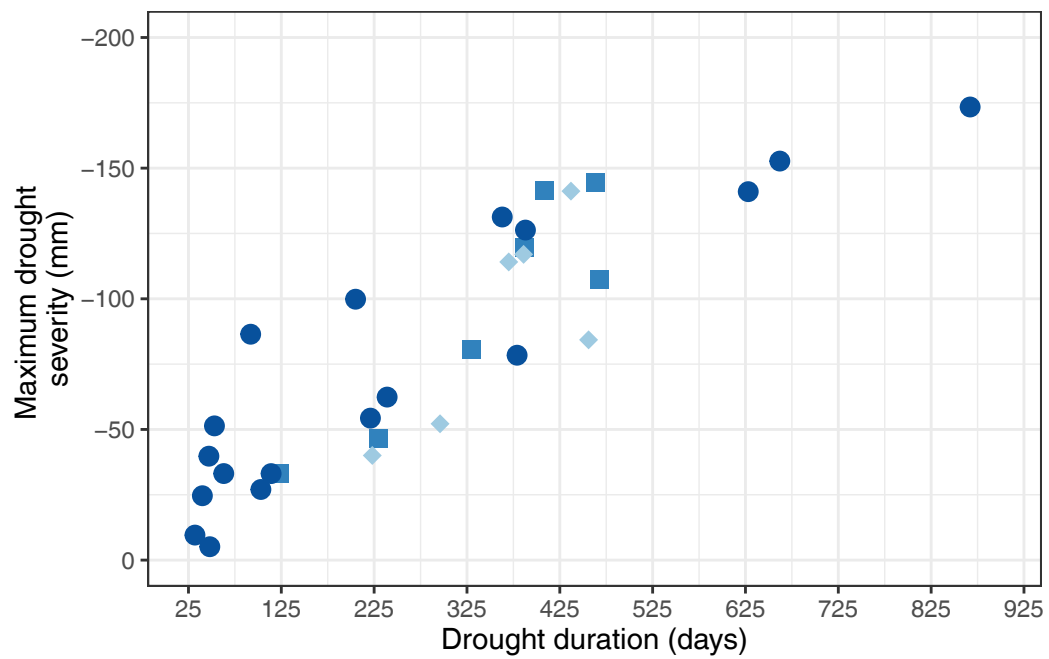


(a) Large GW system with varied GW parameters



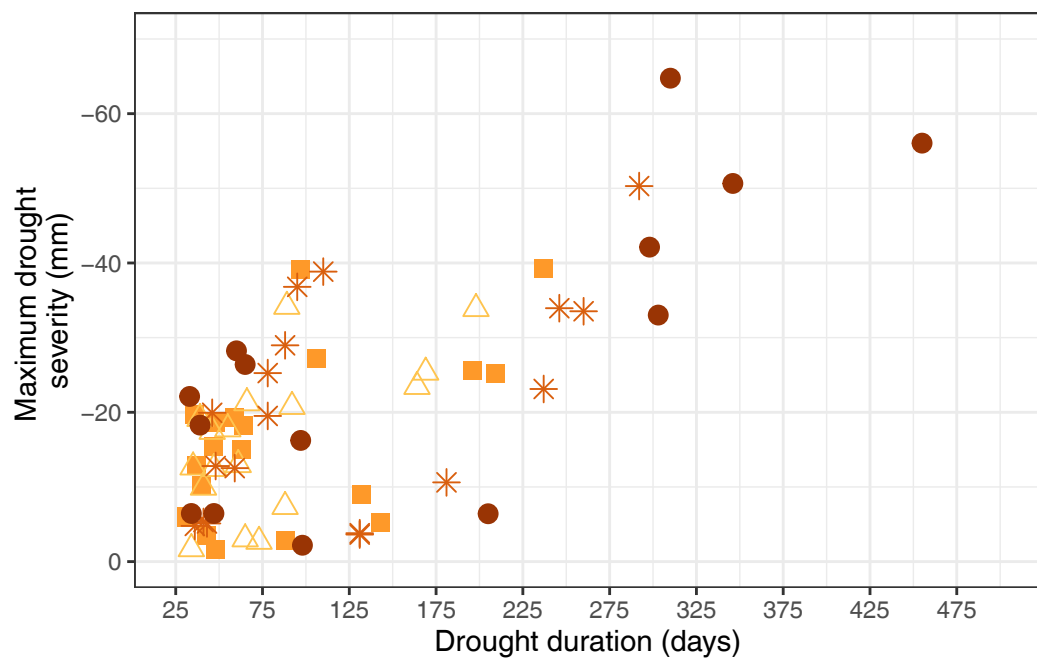
GW parameters △ 33 d ■ 50 d -mean ✱ 75 d ● 100 d

(b) Large GW system with varied water allocation



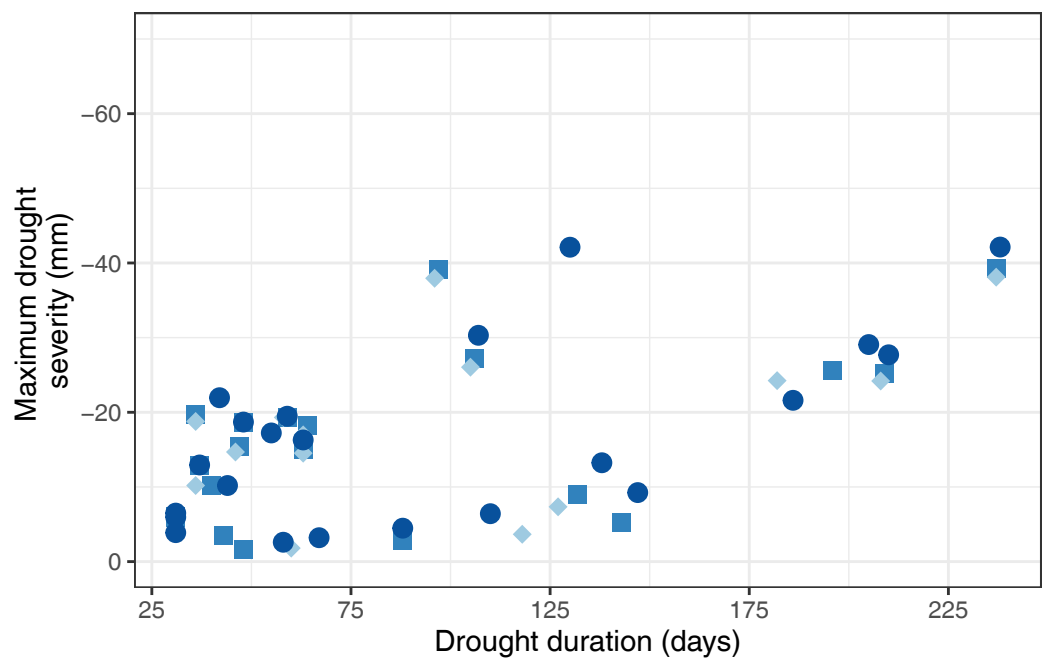
Water allocation ◇ 83.5% ■ 88.5% ● 93.5%

(c) Small GW system with varied GW parameters



GW parameters △ 100 d ■ 200 d -mean ✱ 350 d ● 500 d

(d) Small GW system with varied water allocation



Water allocation ◇ 83.5% ■ 88.5% ● 93.5%