



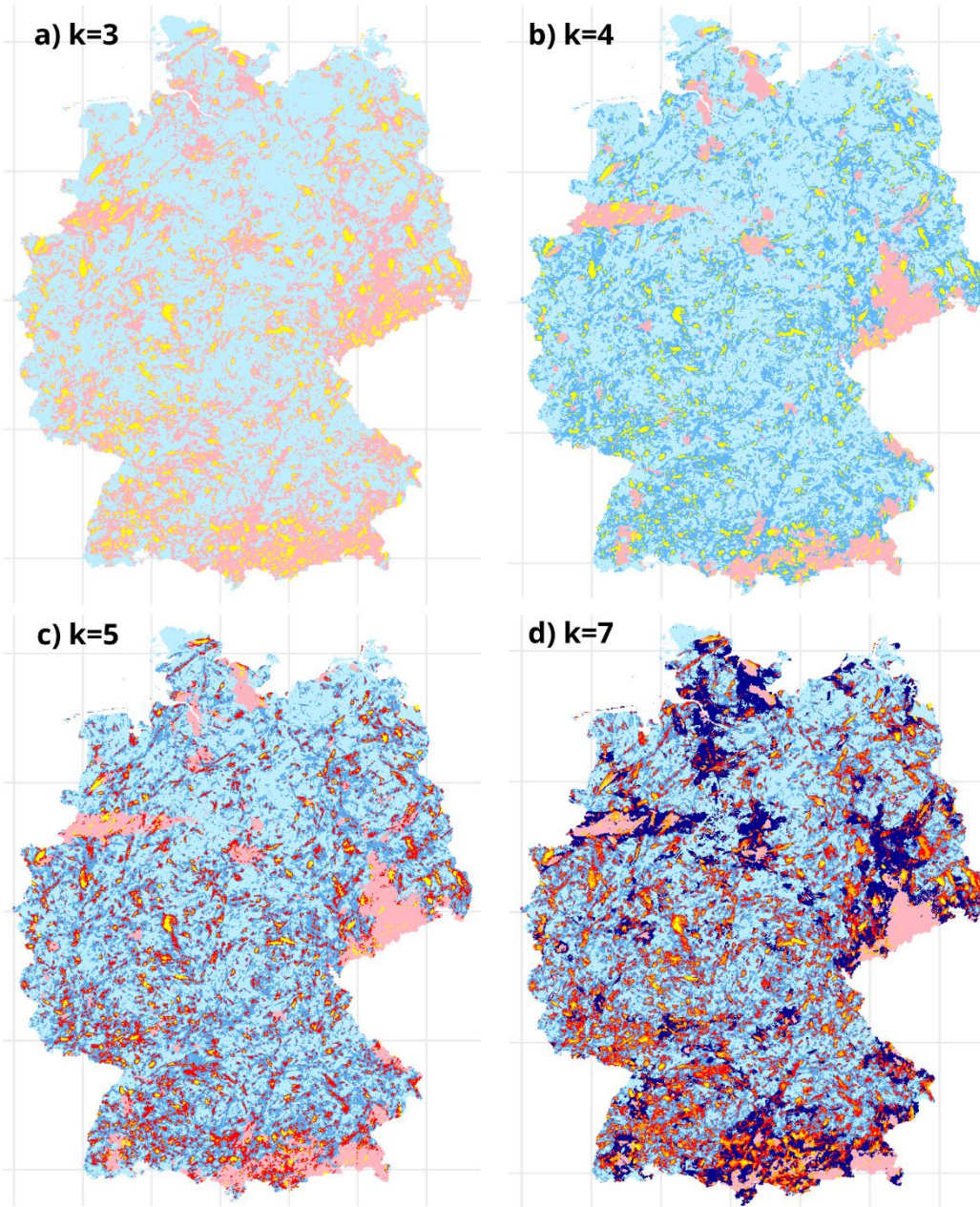
*Supplement of*

## **An analysis of temporal scaling behaviour of extreme rainfall in Germany based on radar precipitation QPE data**

**Judith Marie Pöschmann et al.**

*Correspondence to:* Judith Marie Pöschmann ([judith.poeschmann@tu-dresden.de](mailto:judith.poeschmann@tu-dresden.de))

The copyright of individual parts of the supplement might differ from the article licence.



**Figure S1:** Results of K-means clustering of depth-damage relationships (based on RADKLIM-YW, 2001 – 2016) with a) 3, b) 4, c) 5, and d) 7 clusters chosen

**Table S1:** Curve shapes of 100 randomly selected radar pixels for the different cluster versions from Figure S1 and the final chosen clustering  $k=6$  as a reference. The groups are displayed with the same colours as the corresponding maps.

