



Supplement of

Run-up, inundation, and sediment characteristics of the 22 December 2018 Sunda Strait tsunami, Indonesia

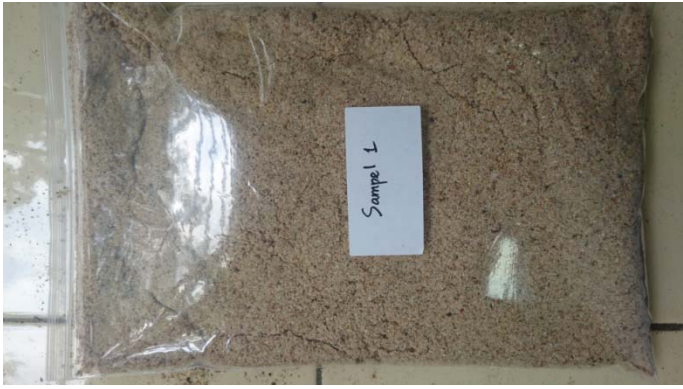
Wahyu Widiyanto et al.

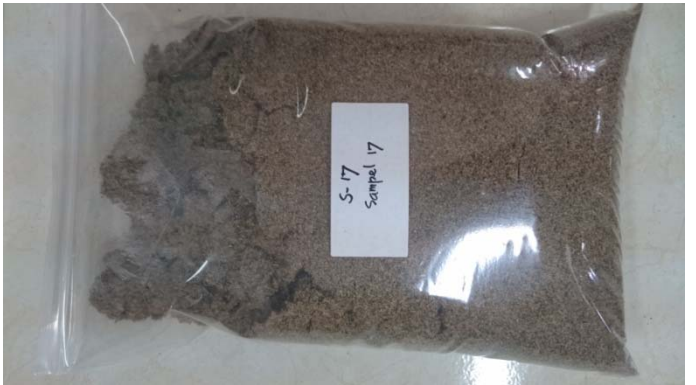
Correspondence to: Shih-Chun Hsiao (schsiao@mail.ncku.edu.tw)

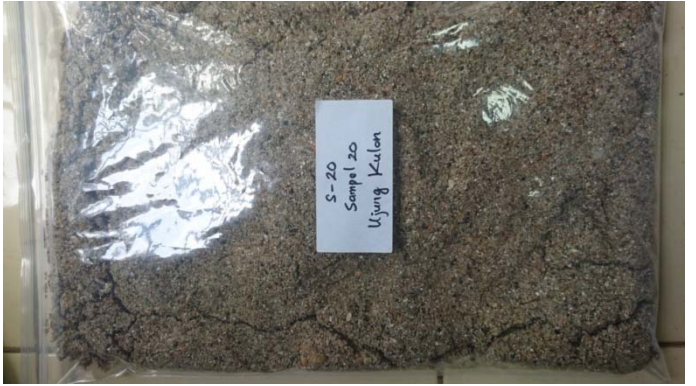
The copyright of individual parts of the supplement might differ from the CC BY 4.0 License.

Sand samples











Boulder movements





Damages





Courtesy: Mr Sumantri



Courtesy: Mr Sumantri





Tsunami direction evidences



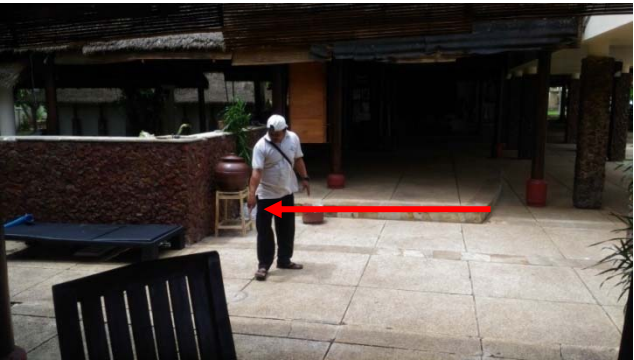




Flow depth and splash evidences (with additional information from eyewitnesses)







Interview with eyewitnesses



