

Supplement of Nat. Hazards Earth Syst. Sci., 20, 1203–1217, 2020
<https://doi.org/10.5194/nhess-20-1203-2020-supplement>
© Author(s) 2020. This work is distributed under
the Creative Commons Attribution 4.0 License.



Supplement of

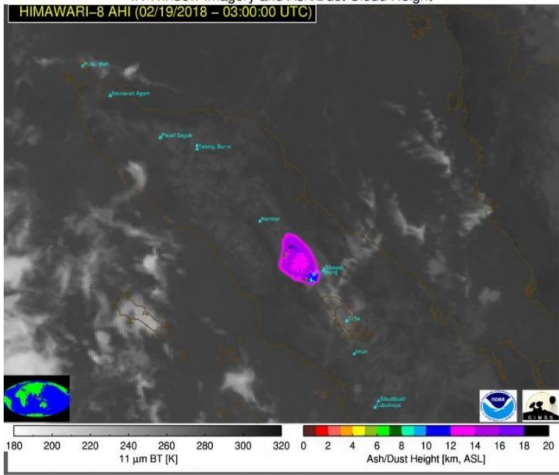
Analysis of properties of the 19 February 2018 volcanic eruption of Mount Sinabung in S5P/TROPOMI and Himawari-8 satellite data

Adrianus de Laat et al.

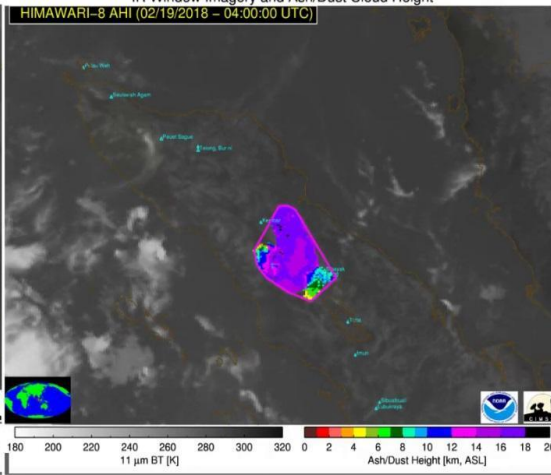
Correspondence to: Adrianus de Laat (laatdej@knmi.nl)

The copyright of individual parts of the supplement might differ from the CC BY 4.0 License.

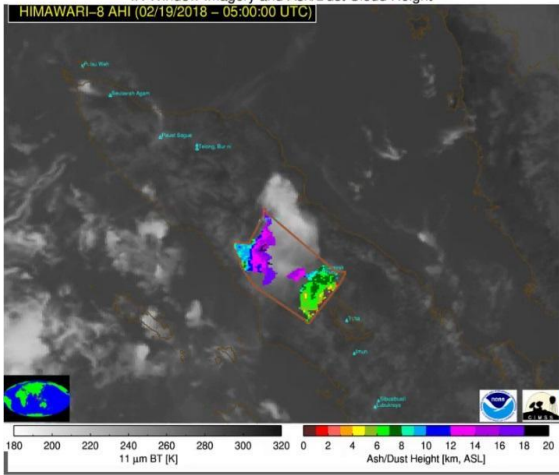
IR Window Imagery and Ash/Dust Cloud Height



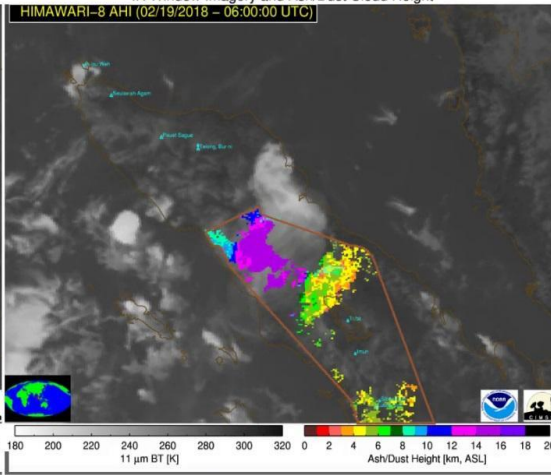
IR Window Imagery and Ash/Dust Cloud Height



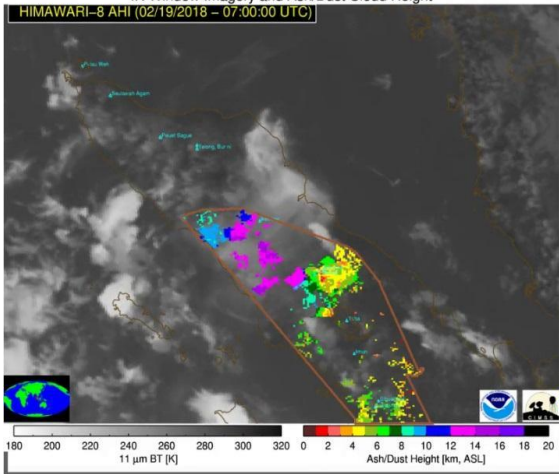
IR Window Imagery and Ash/Dust Cloud Height



IR Window Imagery and Ash/Dust Cloud Height



IR Window Imagery and Ash/Dust Cloud Height



IR Window Imagery and Ash/Dust Cloud Height

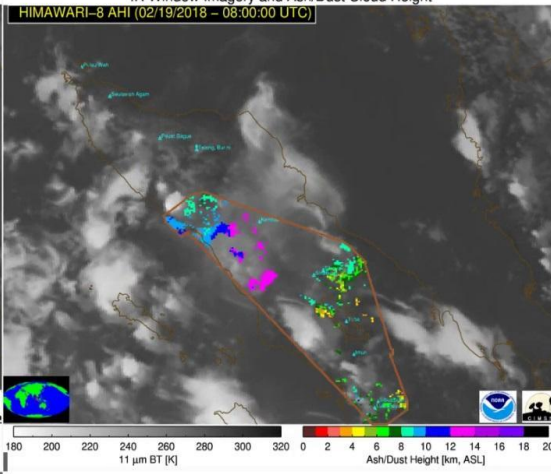


Figure S1. Hourly HIMAWARI-based brightness temperatures (11 μm) and ash/dust heights on 19 February 2018 over Sumatra between 03:00-08:00 UTC. Ash dust heights from NOAA/CIMSS, imagery obtained from the NOAA/CIMSS
10 Volcanic Cloud Monitoring Web Portal (<https://volcano.ssec.wisc.edu/>). The brownish outline is an automatically generated contour.



Figure S2a. MODIS-Terra pseudo visible color images on 19 February 2018 over northern Sumatra, approximately 10:30
15 local time. Image obtained from <https://worldview.earthdata.nasa.gov/>.



Figure S2b. As figure S2a but for the VIIRS satellite instrument and at approximately 13:30 local time. Image obtained from <https://worldview.earthdata.nasa.gov/>.