

Supplement of Nat. Hazards Earth Syst. Sci., 19, 1509–1539, 2019  
<https://doi.org/10.5194/nhess-19-1509-2019-supplement>  
© Author(s) 2019. This work is distributed under  
the Creative Commons Attribution 4.0 License.



Natural Hazards  
and Earth System  
Sciences  Open Access

*Supplement of*

## **Effects of horizontal resolution and air–sea flux parameterization on the intensity and structure of simulated Typhoon Haiyan (2013)**

**Mien-Tze Kueh et al.**

*Correspondence to:* Chuan-Yao Lin ([yao435@rcec.sinica.edu.tw](mailto:yao435@rcec.sinica.edu.tw))

The copyright of individual parts of the supplement might differ from the CC BY 4.0 License.

This supplement contains 3 figures. Figures S1 and S2 present the tracks and central positions of the simulated typhoon Haiyan during the mature stage. Figure S3 shows the simulated minimum central pressures (hPa) and simulated tracks of the experiment 1kmF0 and an additional experiment for simulation with 1 km resolution (and flux option F0) but without cumulus parameterization.

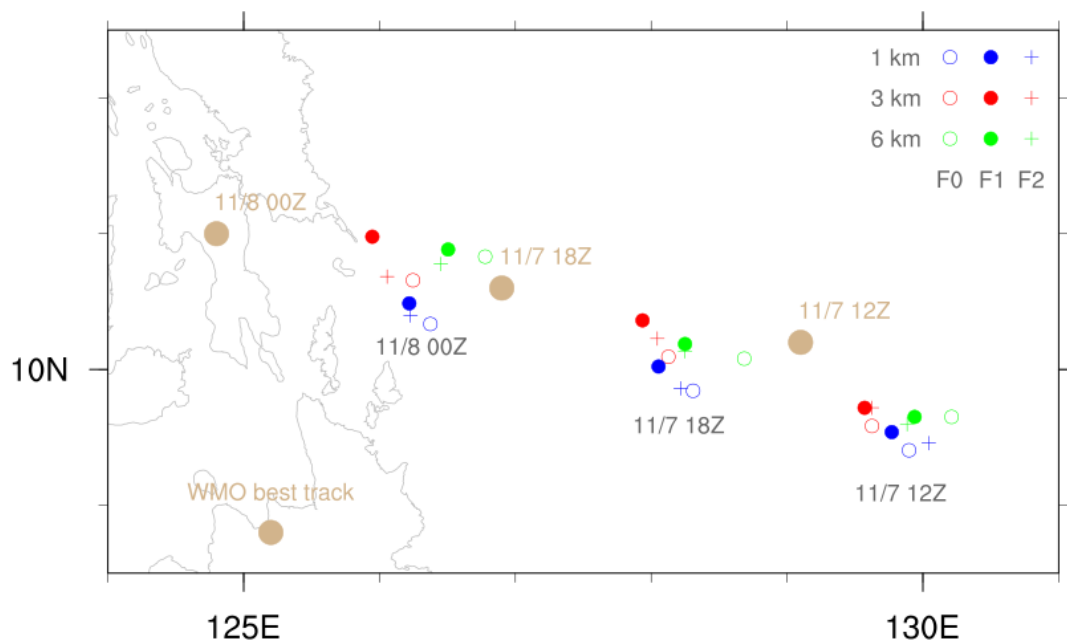


Fig. S1. The central positions of simulated Haiyan during the time period from 1200UTC 7 November 2013 to 0000UTC 8 November 2013. The dots in tan denote the WMO best track positions.

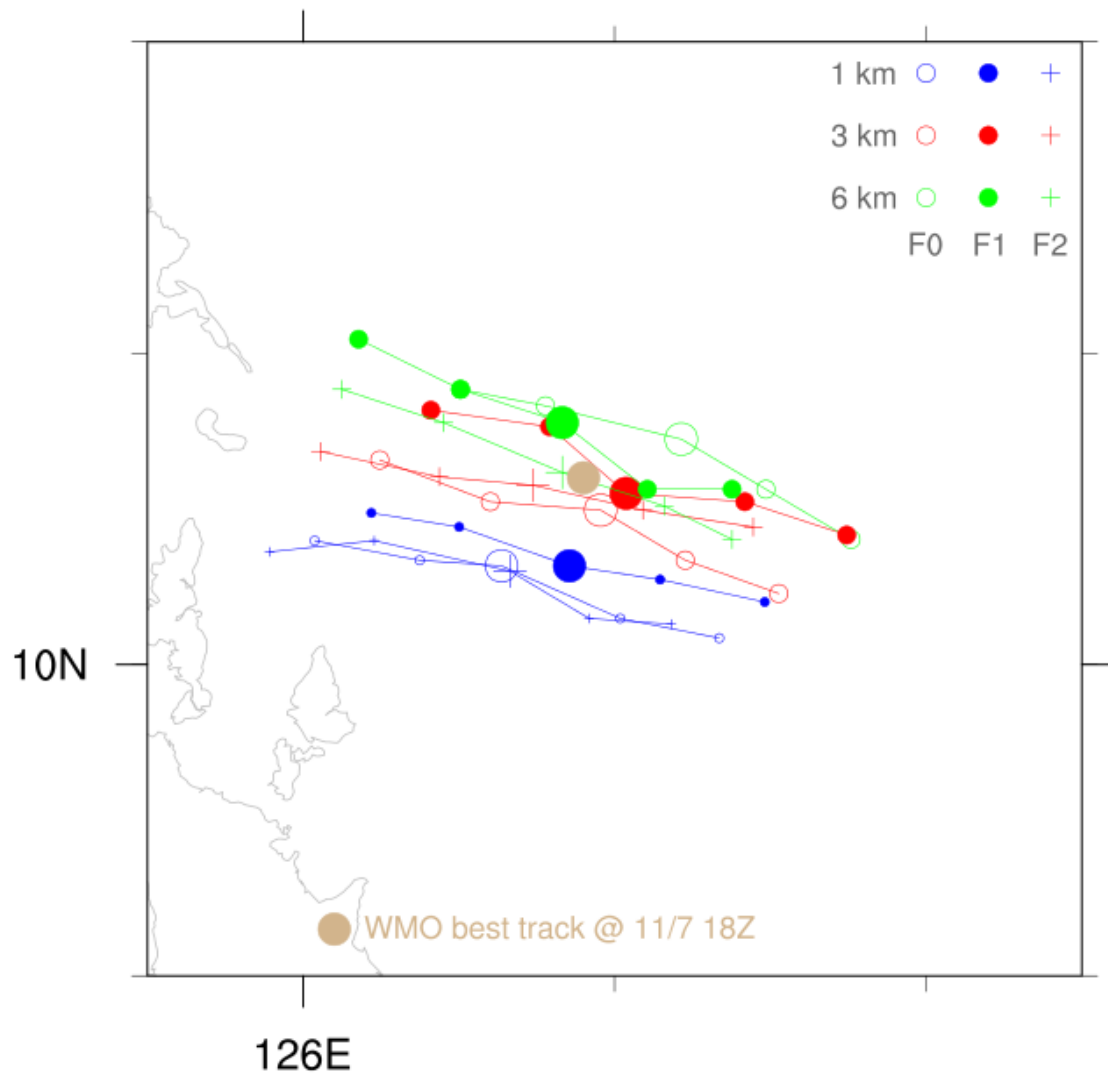


Fig. S2. The simulated tracks and central positions within a 5-hour time slot. For each experiment, the central time of the 5-hour time slot for the hourly positions is taken as the simulated typhoon centered at its nearest location upon the best-track location at 1800UTC 7 November 2013. The simulated position at each central time of the respective 5-hour time slot is denoted by a larger symbol. The dot in tan denotes the WMO best track positions at 1800UTC 7 November 2013.

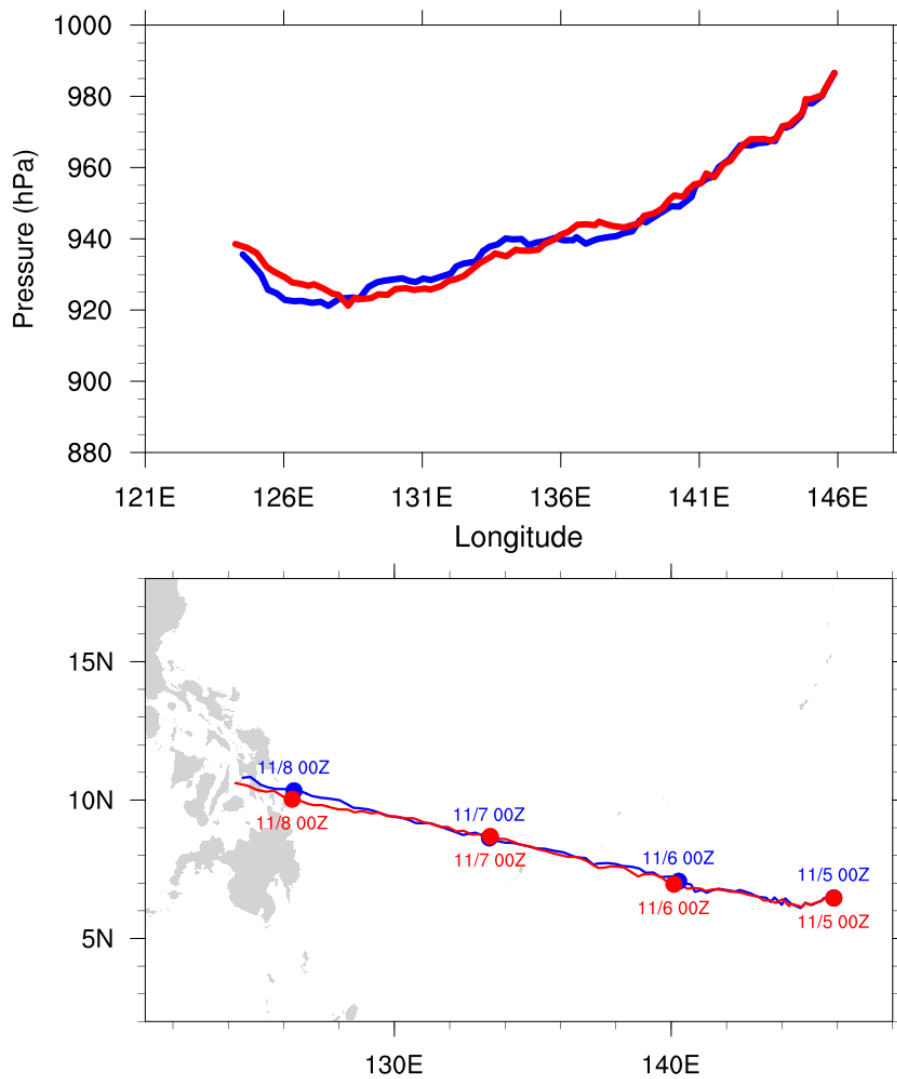


Fig. S3. The simulated minimum central pressures (hPa) and tracks during the period from 0000UTC 5 November 2013 through 0600UTC 8 November 2013. The experiment 1kmF0 is denoted in blue, and the additional experiment for simulation with 1 km resolution (and F0) but without cumulus parameterization is denoted in red. The evolutions of the simulated minimum central pressures (top panel) are shown in relation to longitude. The simulated tracks (bottom panel) are derived from the 1-hourly simulation results. The simulated position at each 0000UTC is denoted by a dot.