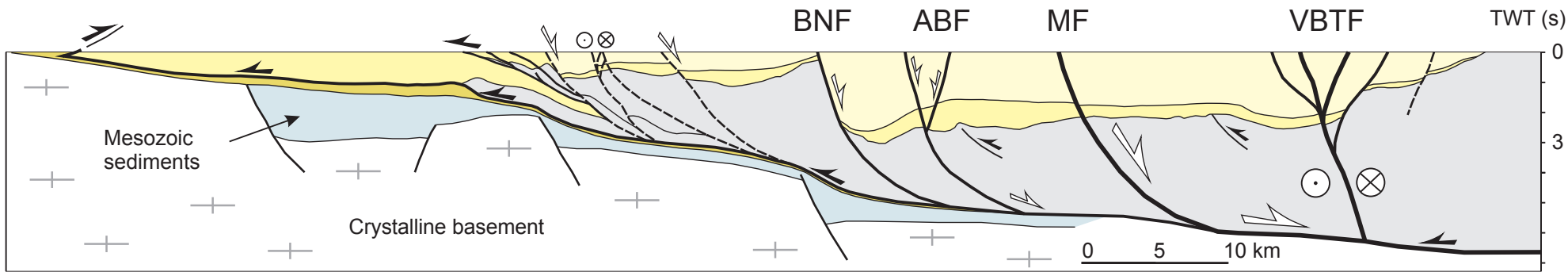


NW

Molasse Basin

Vienna Basin

SE



Lower miocene:

Thrust fault

Middle to upper miocene:

Normal fault

Sinistral strike-slip fault

Autochthonous mesozoic sediments

Alpine-carpathian thrust units

Middle–upper miocene (pull-apart stage)

European basement

Autochthonous L. miocene sed.

Lower miocene wedge top Basin