

Supplement of Nat. Hazards Earth Syst. Sci., 18, 2653–2674, 2018  
<https://doi.org/10.5194/nhess-18-2653-2018-supplement>  
© Author(s) 2018. This work is distributed under  
the Creative Commons Attribution 4.0 License.



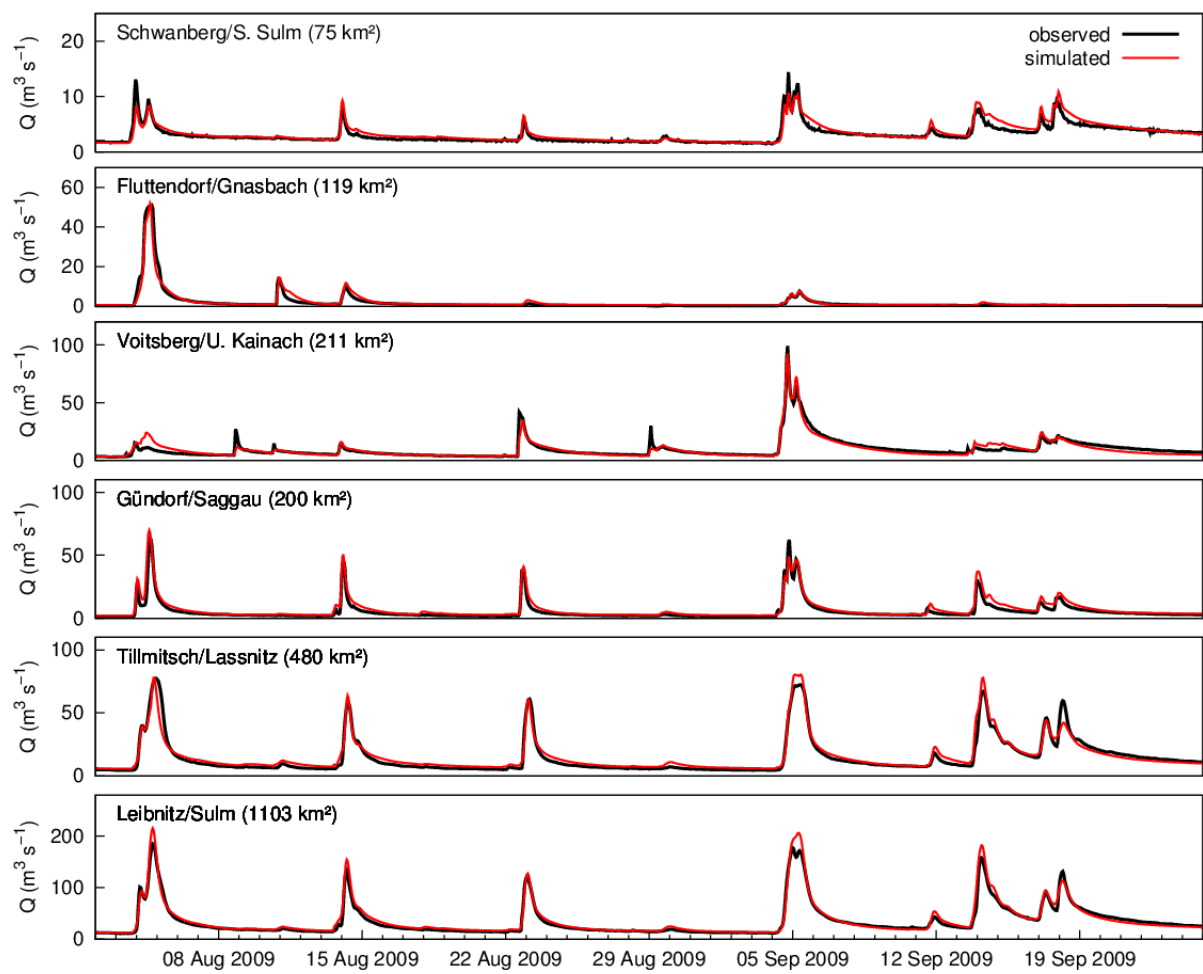
*Supplement of*

## **Convection-permitting regional climate simulations for representing floods in small- and medium-sized catchments in the Eastern Alps**

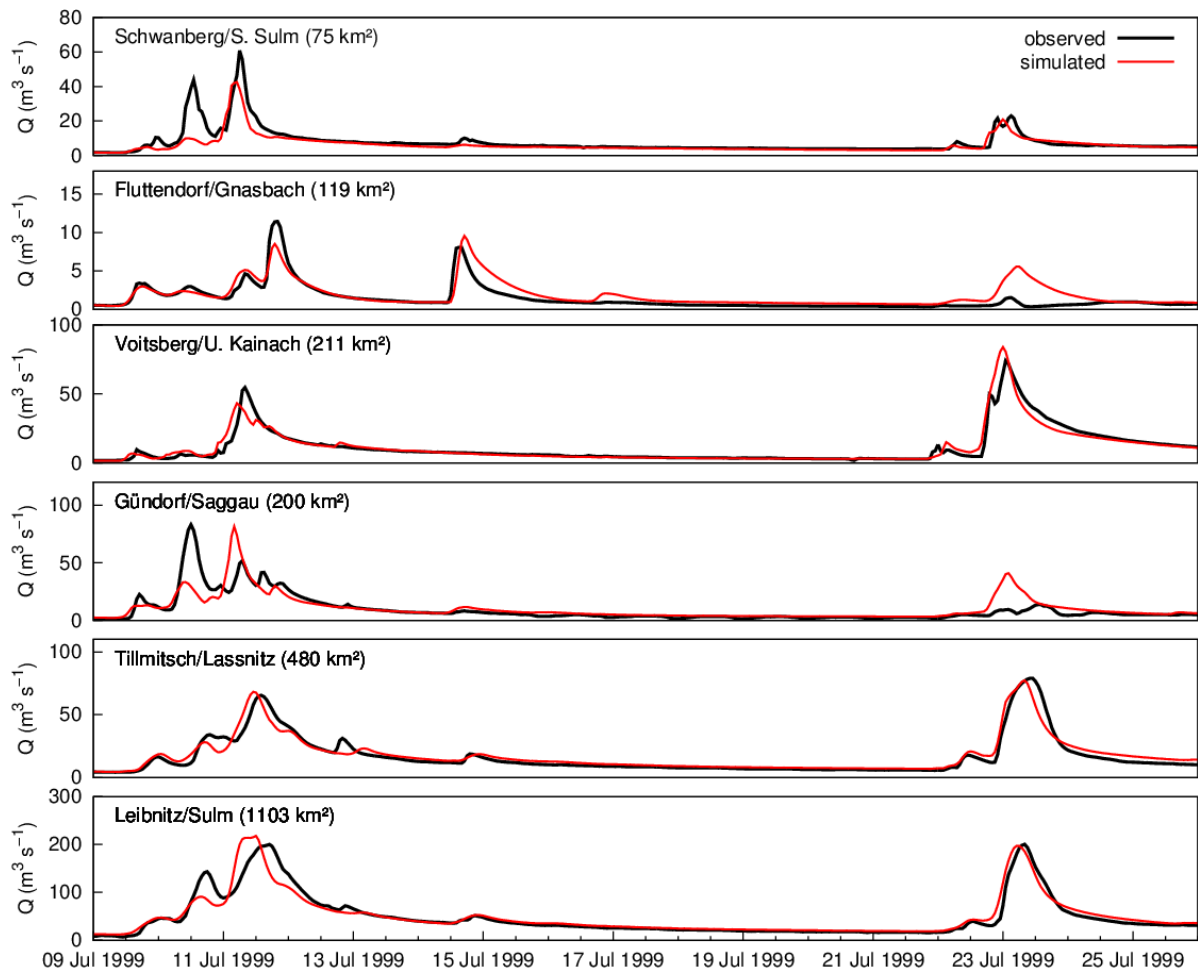
**Christian Reszler et al.**

*Correspondence to:* Christian Reszler ([christian.reszler@jr-aquaconsol.at](mailto:christian.reszler@jr-aquaconsol.at))

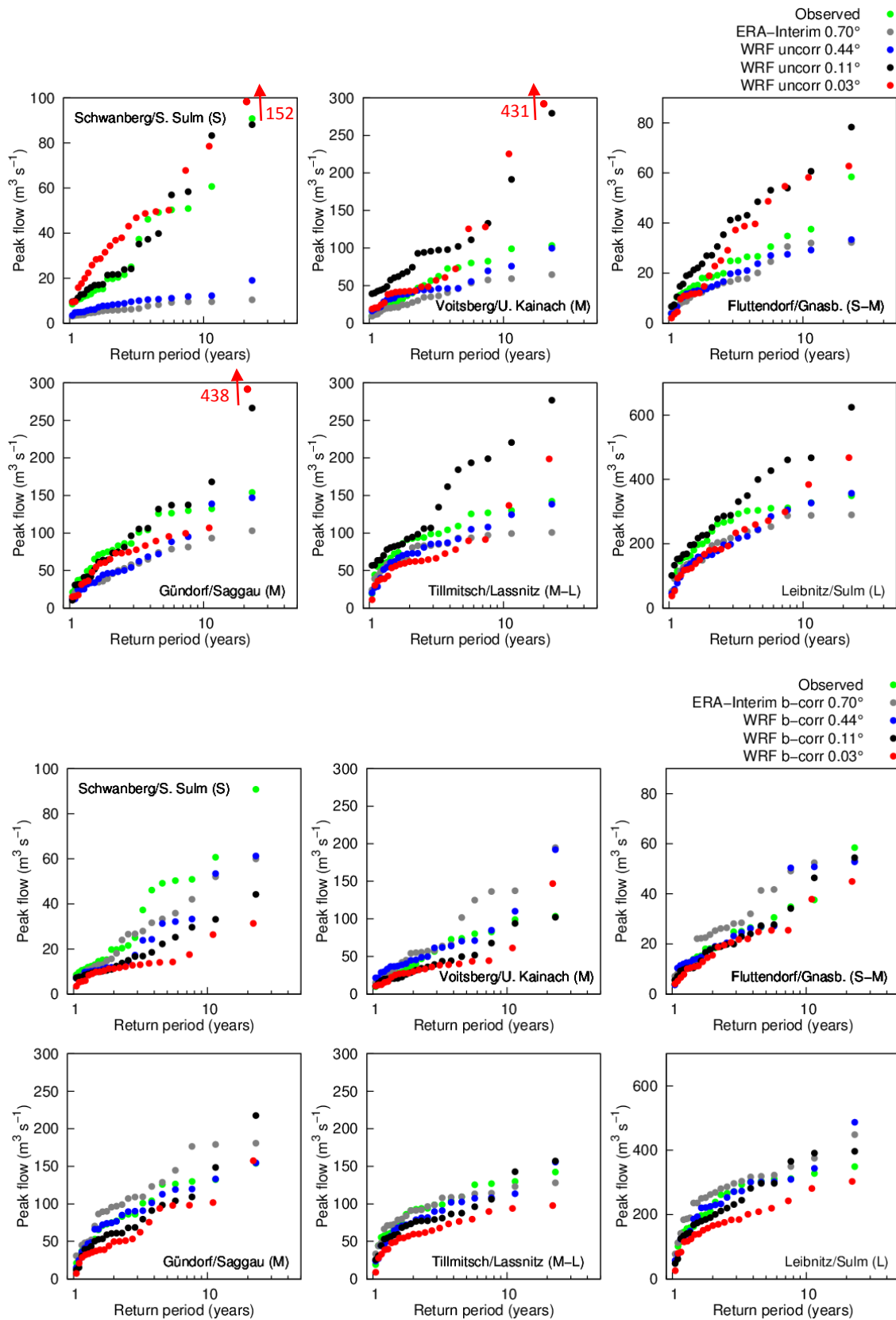
The copyright of individual parts of the supplement might differ from the CC BY 4.0 License.



**Figure S1: Model calibration: several flood events at the selected gauges in August/September 2009.**



**Figure S2: Model validation: two events at the selected gauges in July 1999.**



**Figure S3: Simulated maximum annual flood peaks using raw (above) and bias corrected (below) WRF data as input and observed maximum annual flood peaks vs. empirical return periods of the selected gauges in the period 1989-2010. Note that the WRF 0.03° simulation (red points) crashed in 2010, so that MAF series length is 21 years (RPmax = 22 years).**

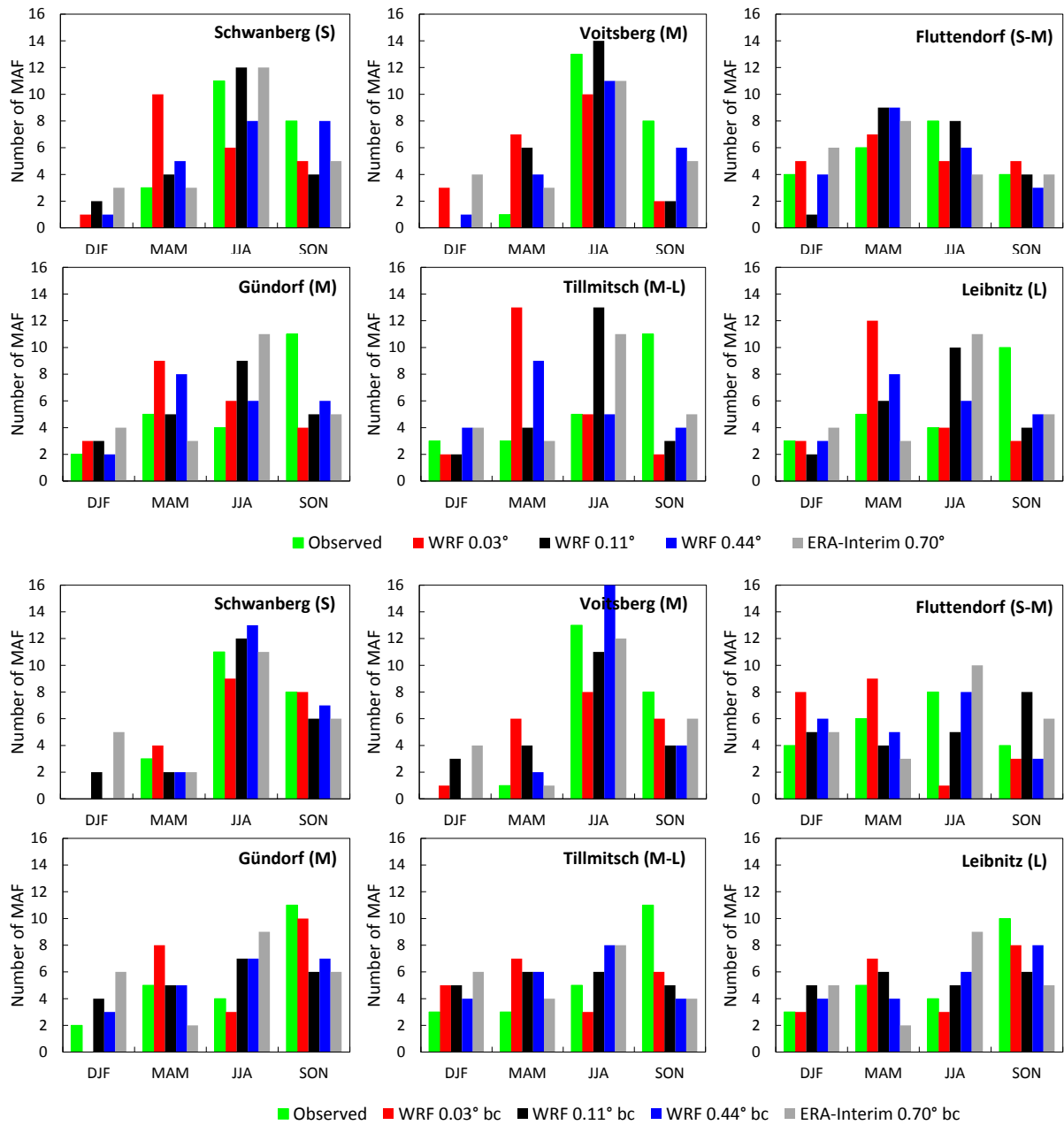
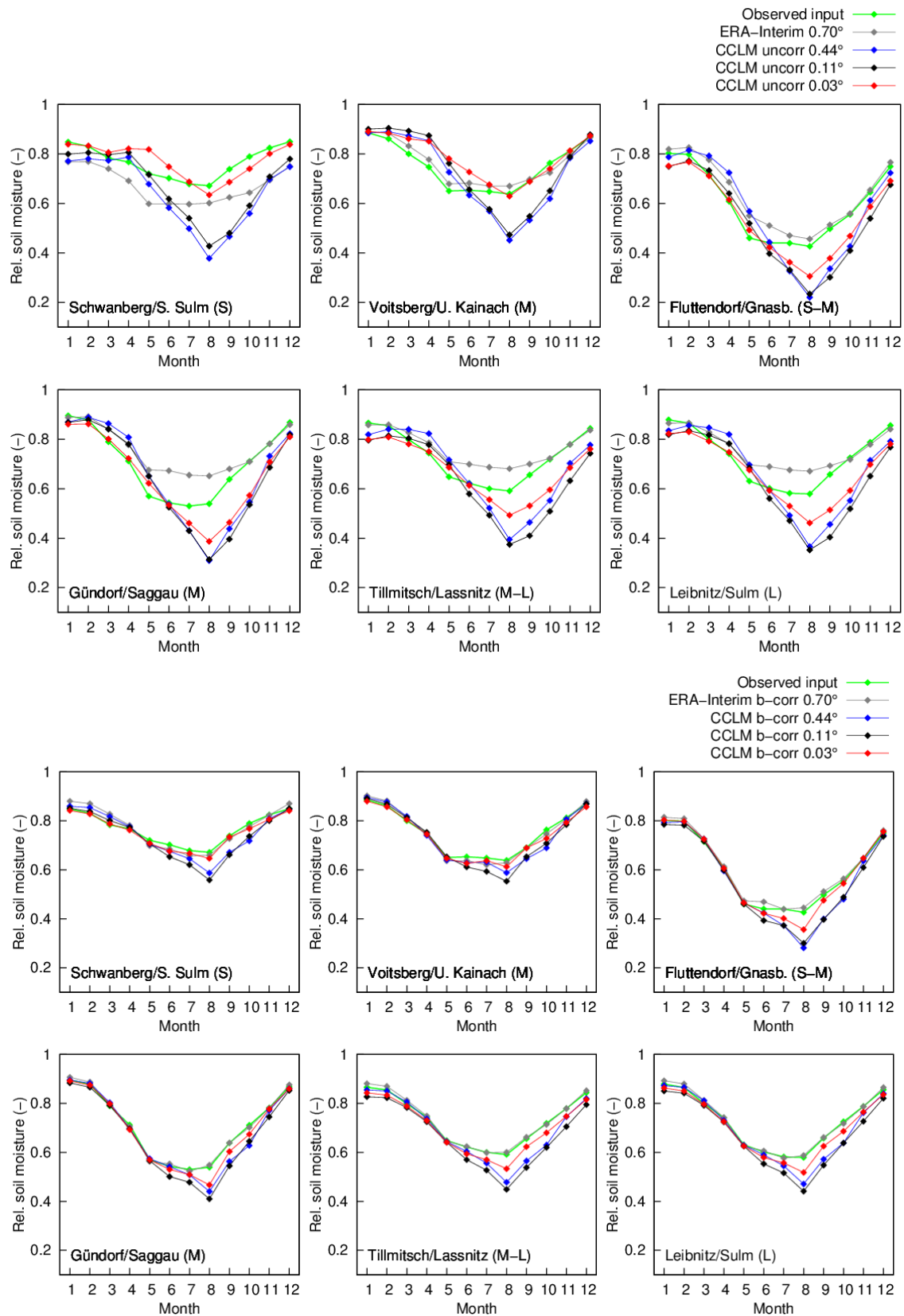
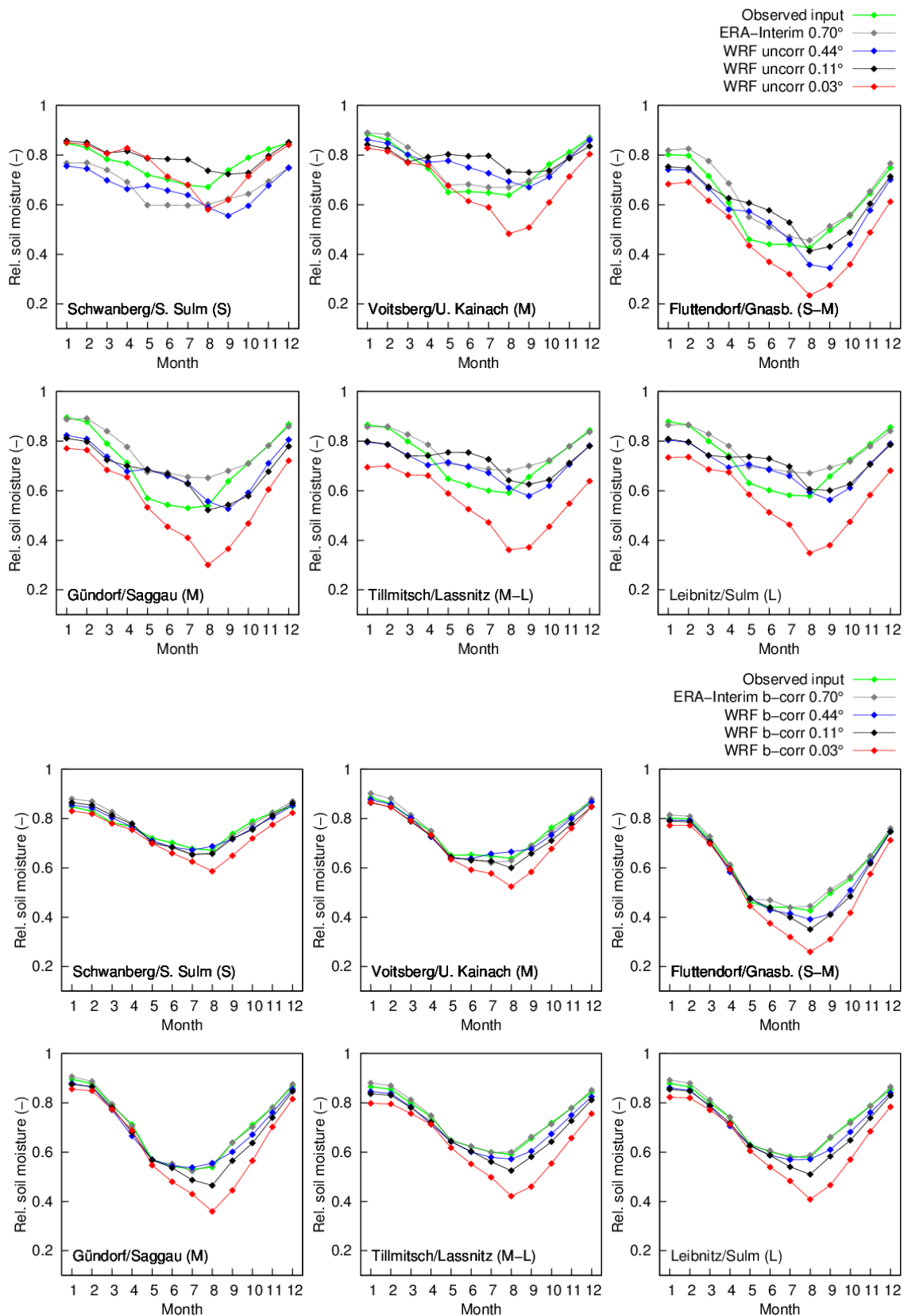


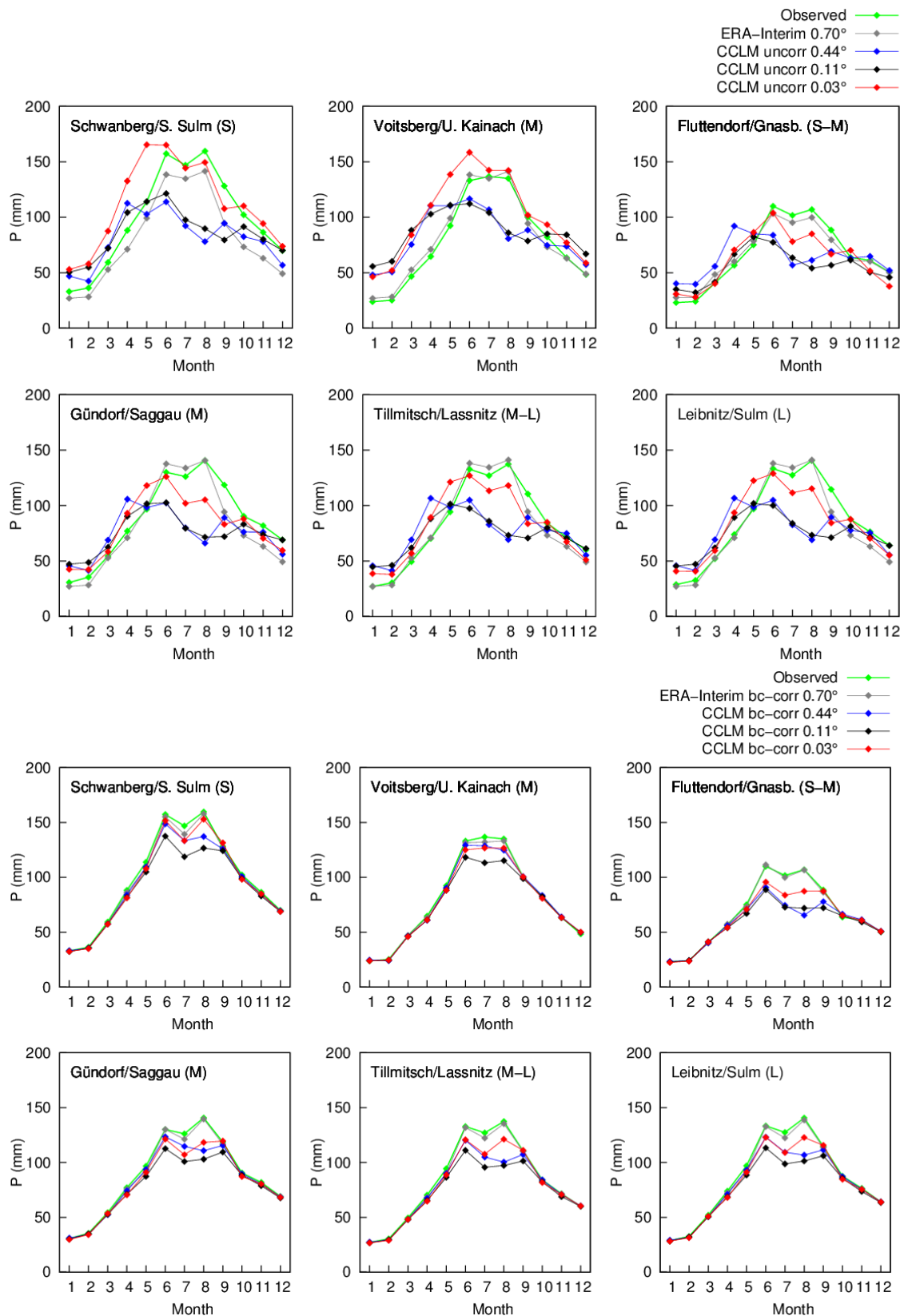
Figure S4: Number of maximum annual floods in the four seasons (seasonality) from the simulation using raw (above) and bias corrected (below) WRF data as input compared to the observation at the selected gauges in the period 1989-2010. Note that the WRF 0.03° simulation (red bars) crashed in 2010, so that total MAF number is 21.



**Figure S5: Simulated soil moisture on monthly basis using raw (above) and bias corrected CCLM data (below) as input compared to the simulations with observed input (green). In the model KAMPUS, soil moisture is defined as the total amount of water stored in the upper soil zone, which can be depleted by evapotranspiration. Relative values related to the maximum storage capacity are used.**



**Figure S6:** As above using raw (above) and bias corrected WRF data (below) as input compared to the simulations with observed input (green). In the model KAMPUS, soil moisture is defined as the total amount of water stored in the upper soil zone, which can be depleted by evapotranspiration. Relative values related to the maximum storage capacity are used.



**Figure S7: Mean monthly catchment precipitation sums from raw CCLM (above) and bias corrected CCLM data (below) compared to the observed values (green).**



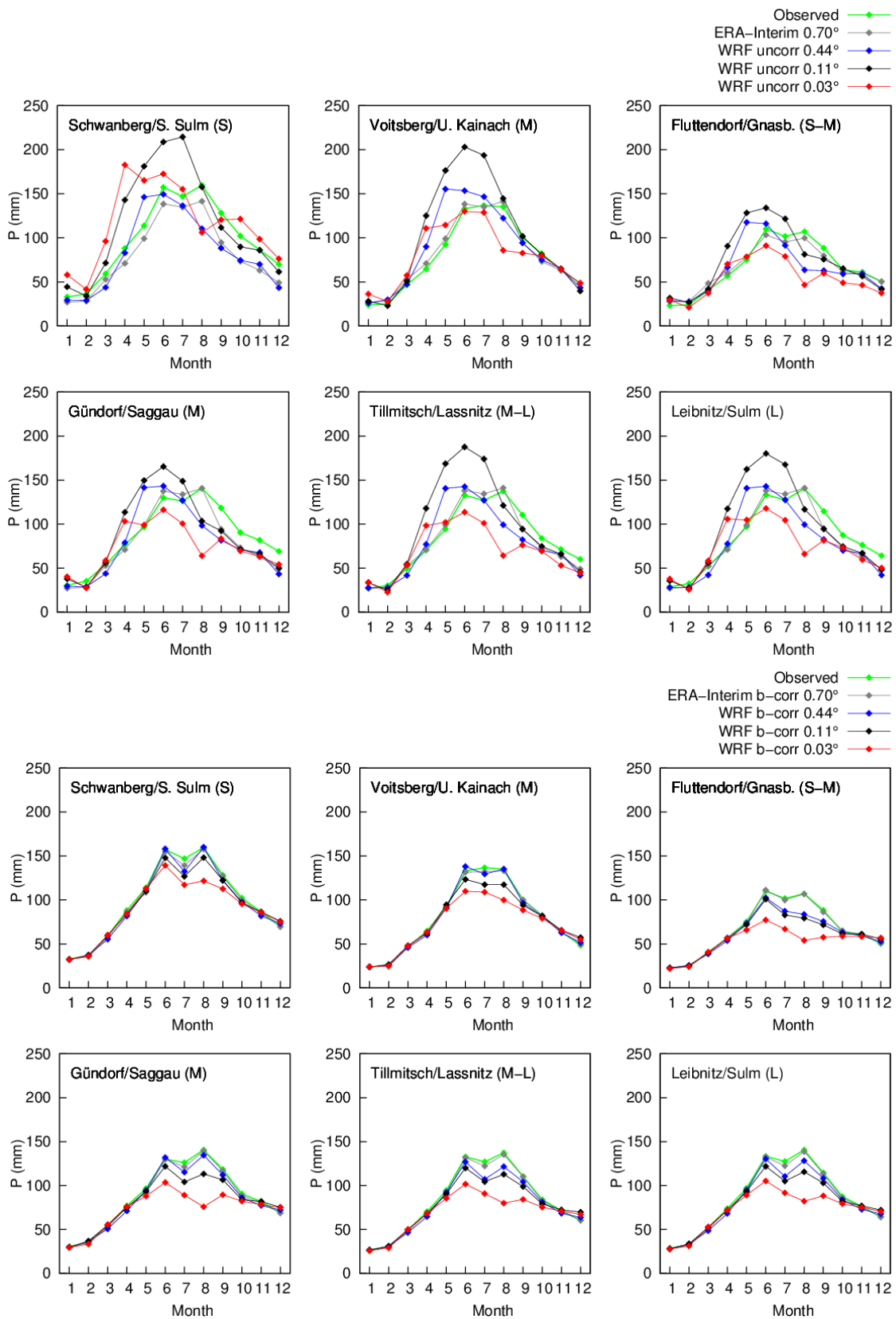


Figure S8: As above with uncorrected (above) and bias corrected (below) WRF data.