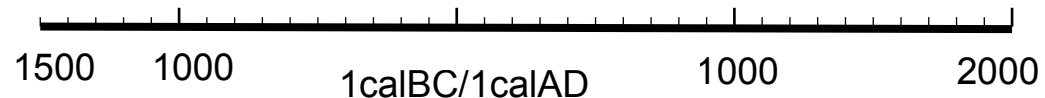


Kefr Saber

Radiocarbon dating of sedimentary units and tsunami deposit

Sample name	Sample type	Cal. age (2 σ)	Depth (cm)	Age cal.	
TSU P3 S2	Charcoal	820-1020 AD	72		
Simulated age of tsunami event X (137-422 AD)					Tsunami (21 July 365) from historical catalogue
TSU P5S3	Charcoal	30-180 AD	17		
TSU P3 S1	Charcoal	49-59 AD	73		
TSU P5S1	Charcoal	360-50 BC	12		
TSU P5S4	Charcoal	1050-350 BC	33		



Calibrated date (calBC/calAD)